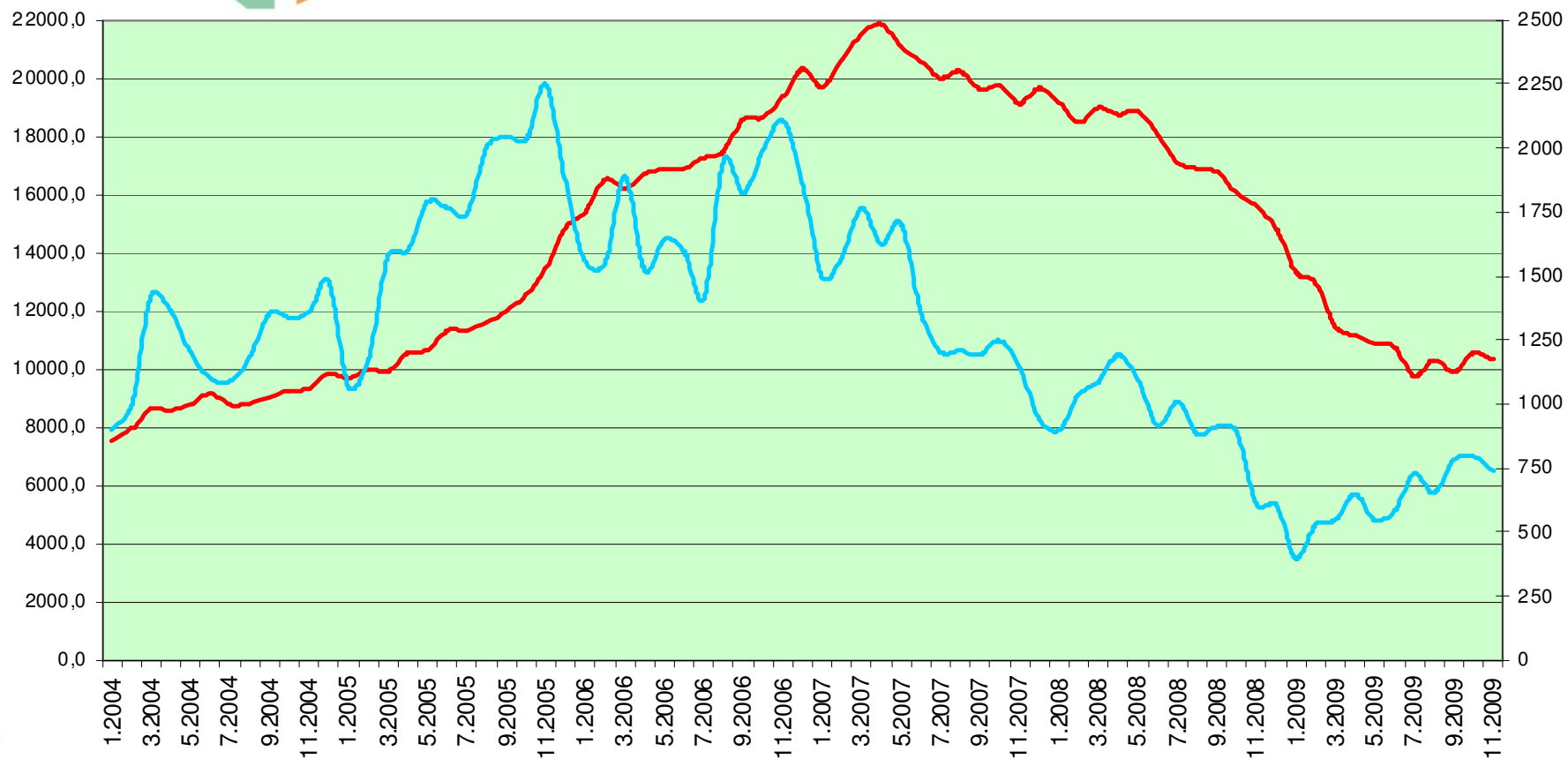




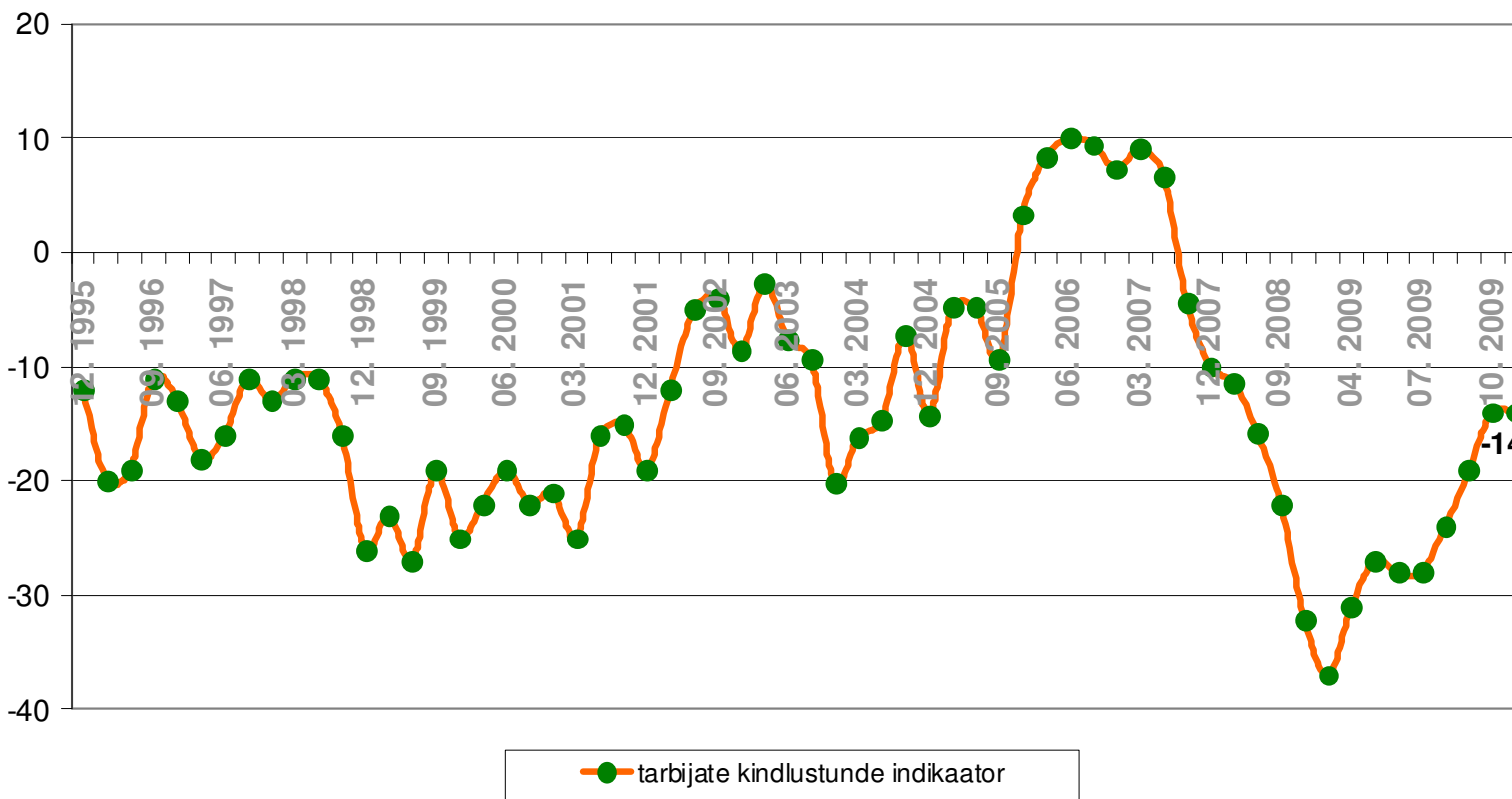
KINNISVARATURU AKTIIVSUS JA REGIONAALSED ERIPÄRAD

PINDI HINNAINDEKS

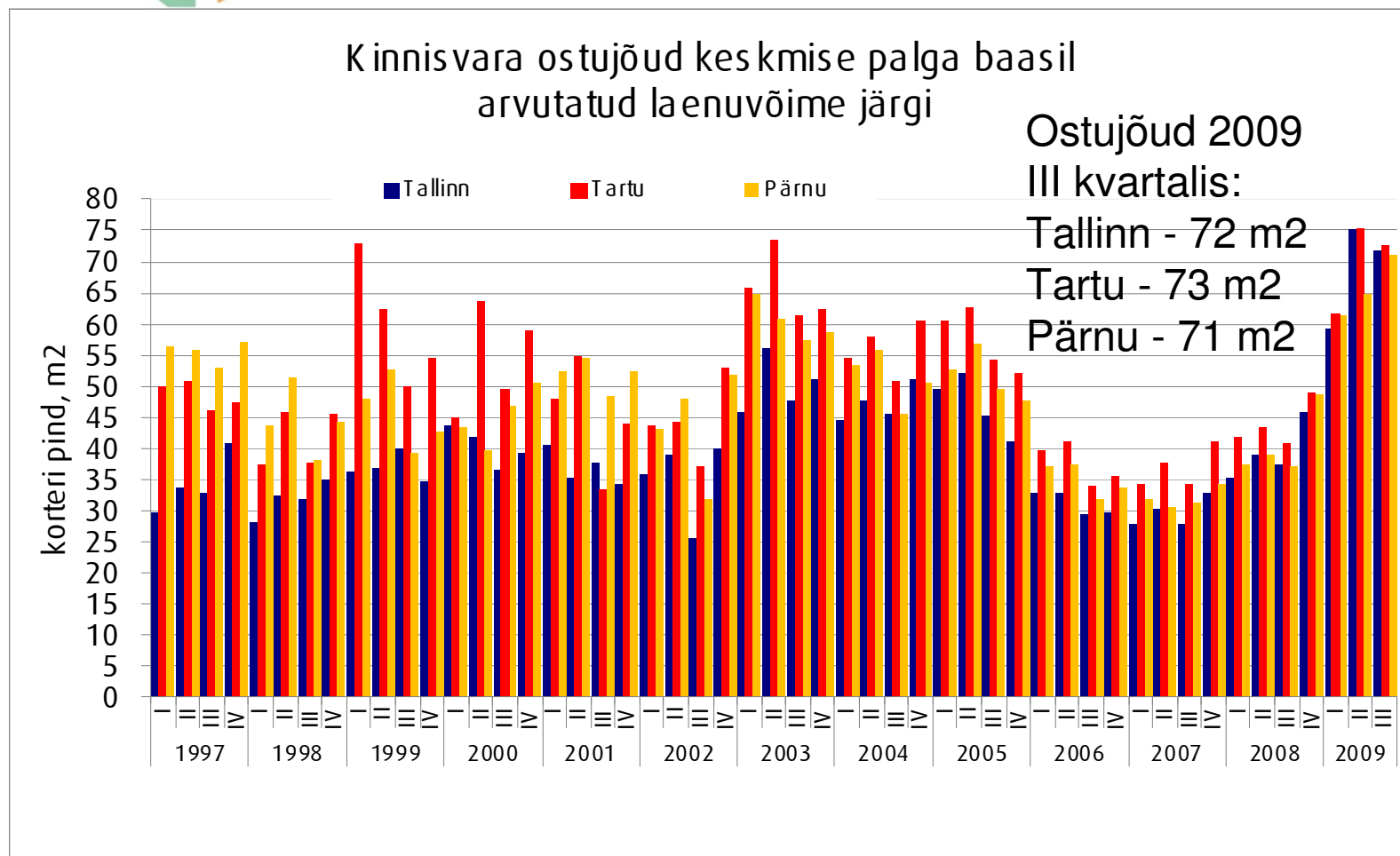


— Eesti 17 suurema linna korterite ruutmeetri kaalutud keskmine hind (allikad: Pindi Kinnisvara andmebaasid, Maa-amet, Statistikaamet)
 — Eesti 17 suurema linna tehingute arv (allikas: Maa-amet)

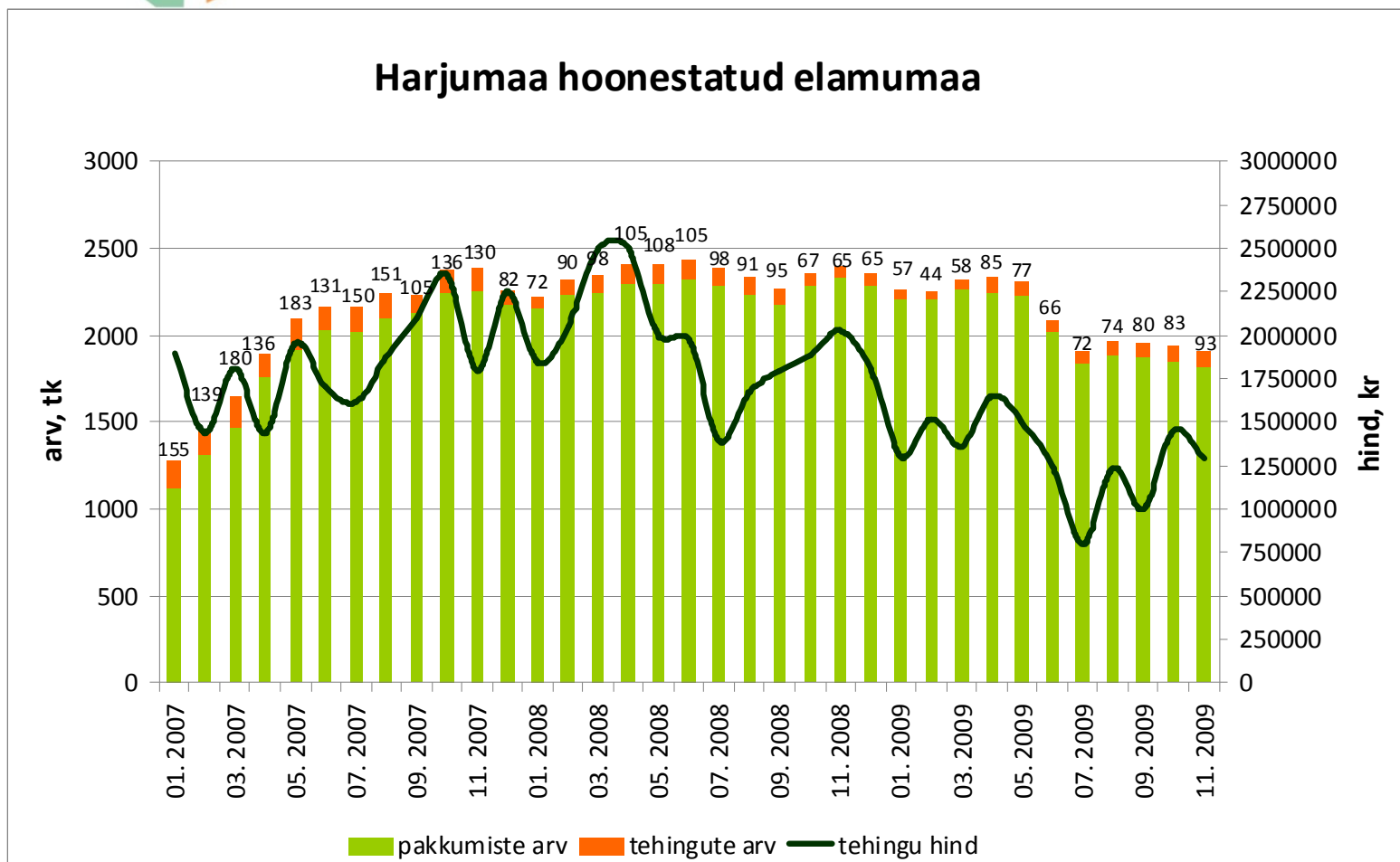
Tarbijate kindlustunde indikaator



Kinnisvara ostujõud keskmise palga baasil arvutatud laenuvõime järgi:

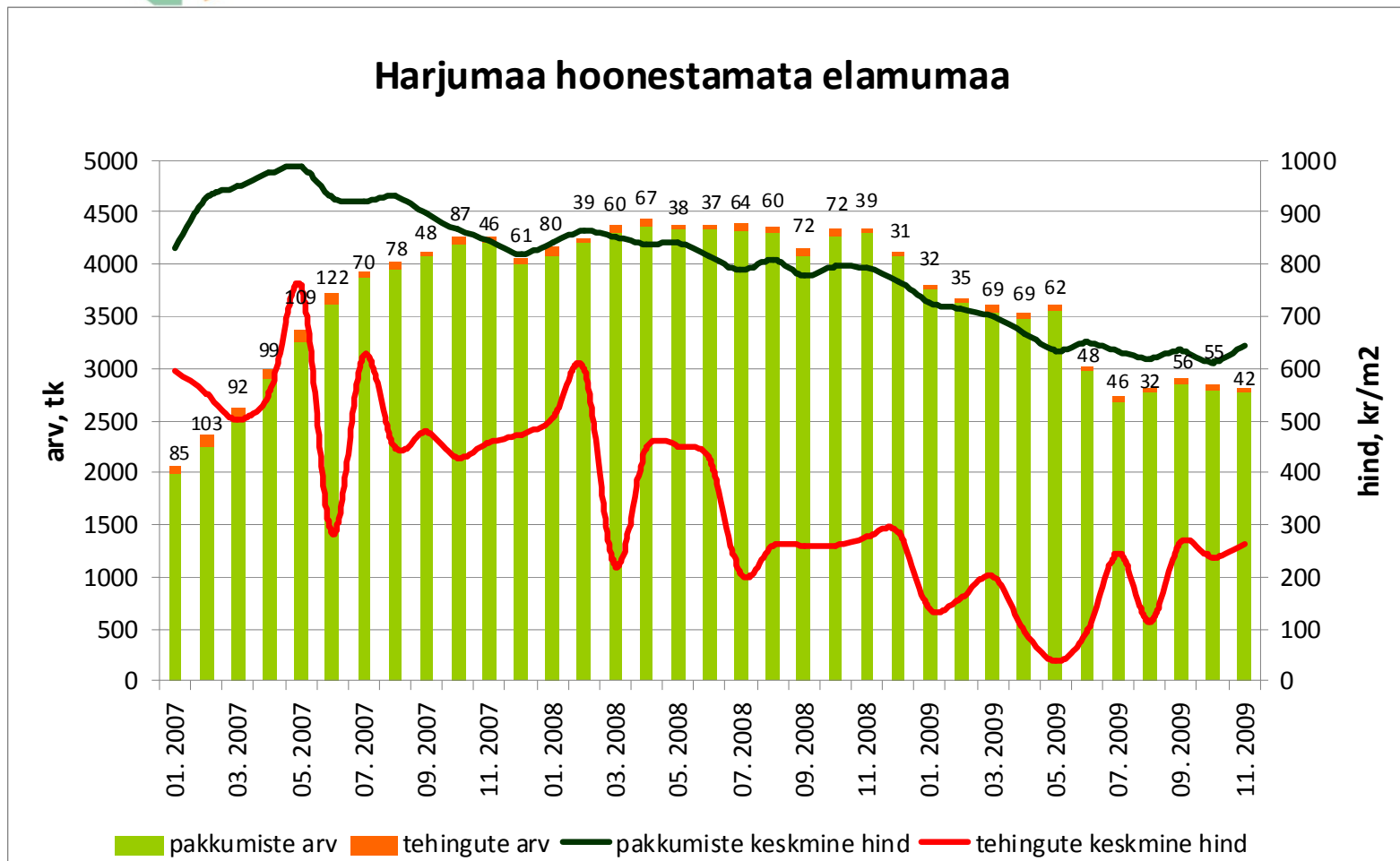


Tehinguhind on langenud hinnatipust (aprill 2008.a.) 48% (november -11%)



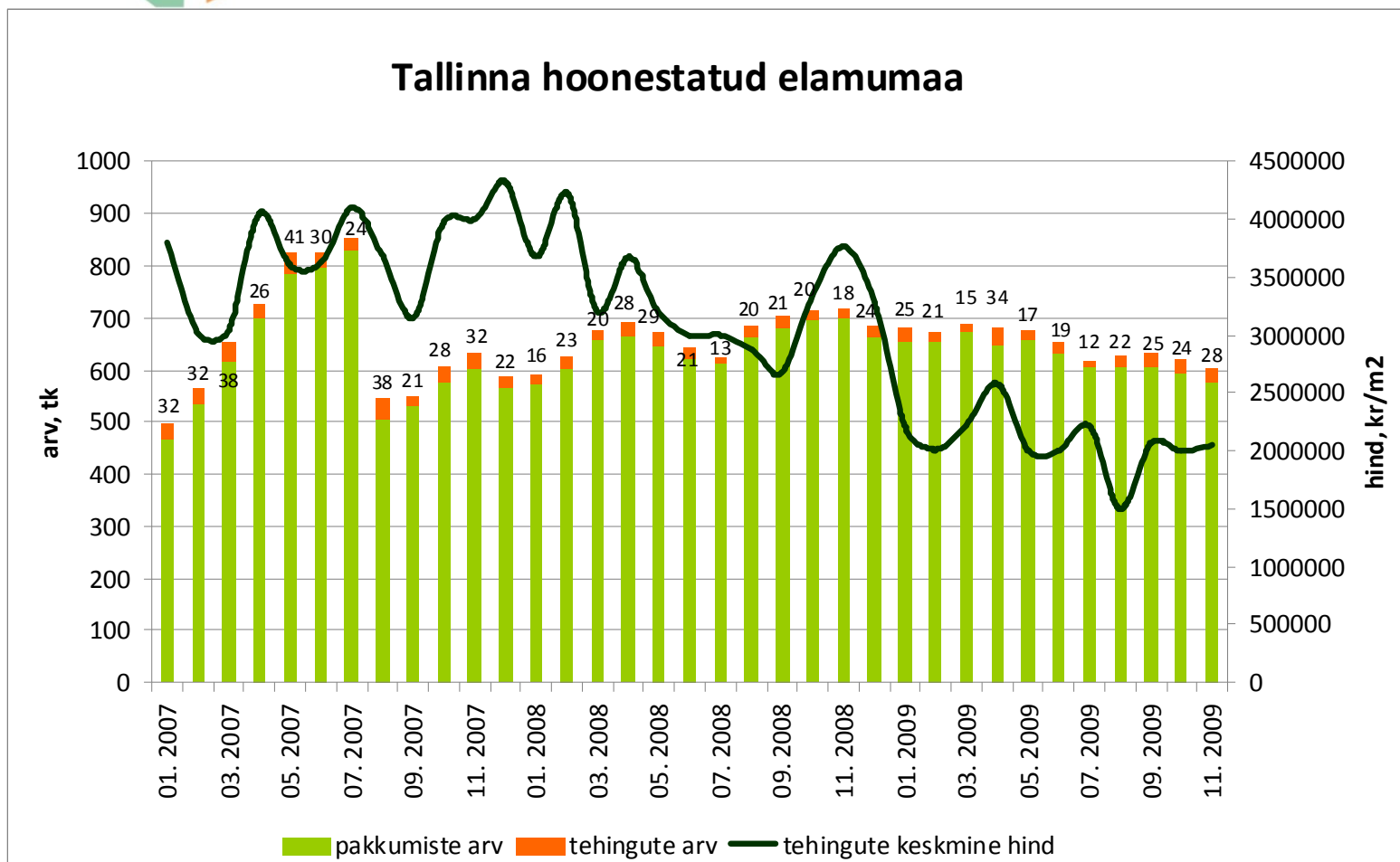
Allikad: Maa-amet, City24

Tehinguhind on langenud hinnatipust (mai 2007.a.) 65% (november -11%)



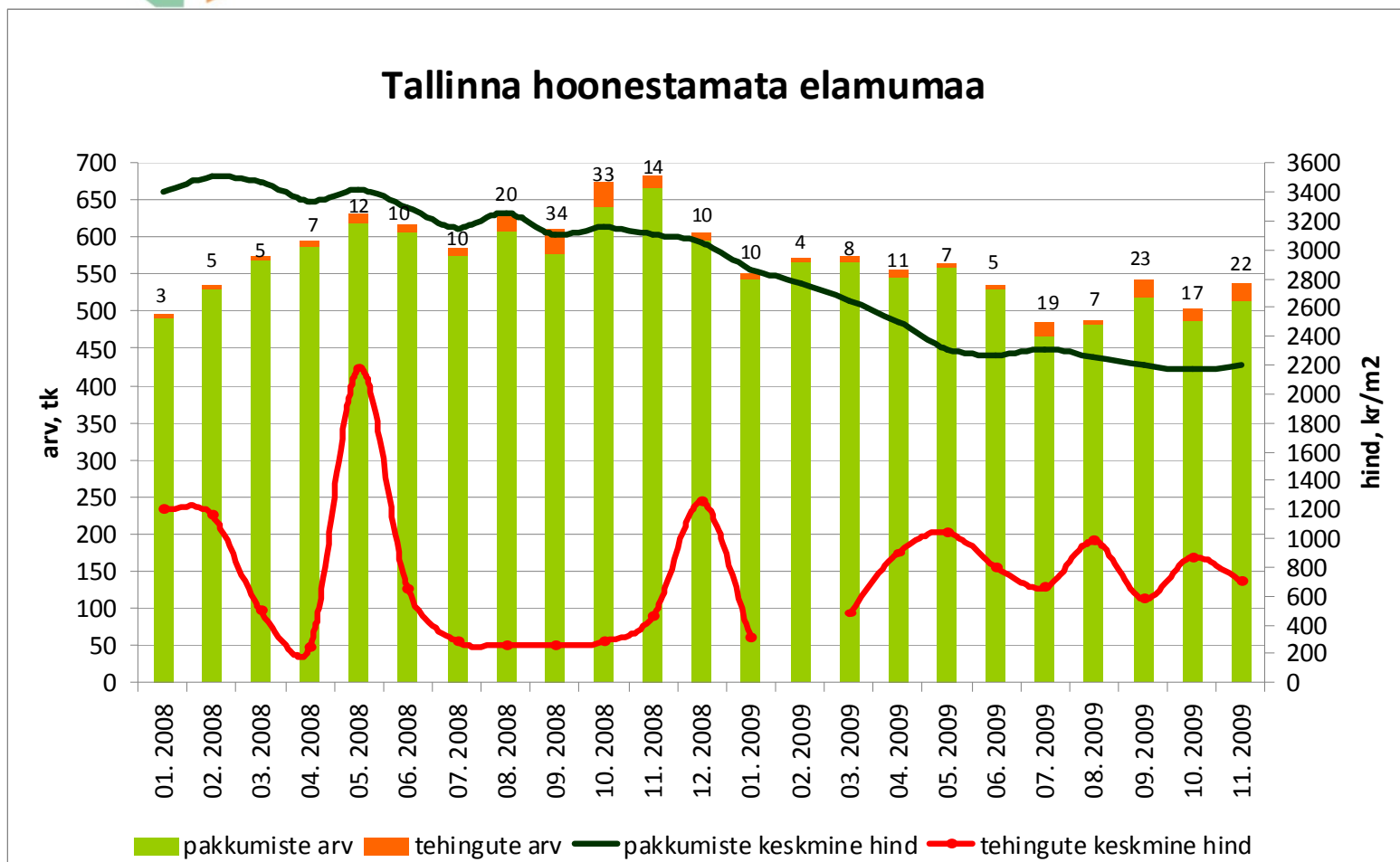
Allikas: Maa-amet, City24

Tehinguhind on langenud hinnatipust (detsember 2007.a.) 53% (november +3%)



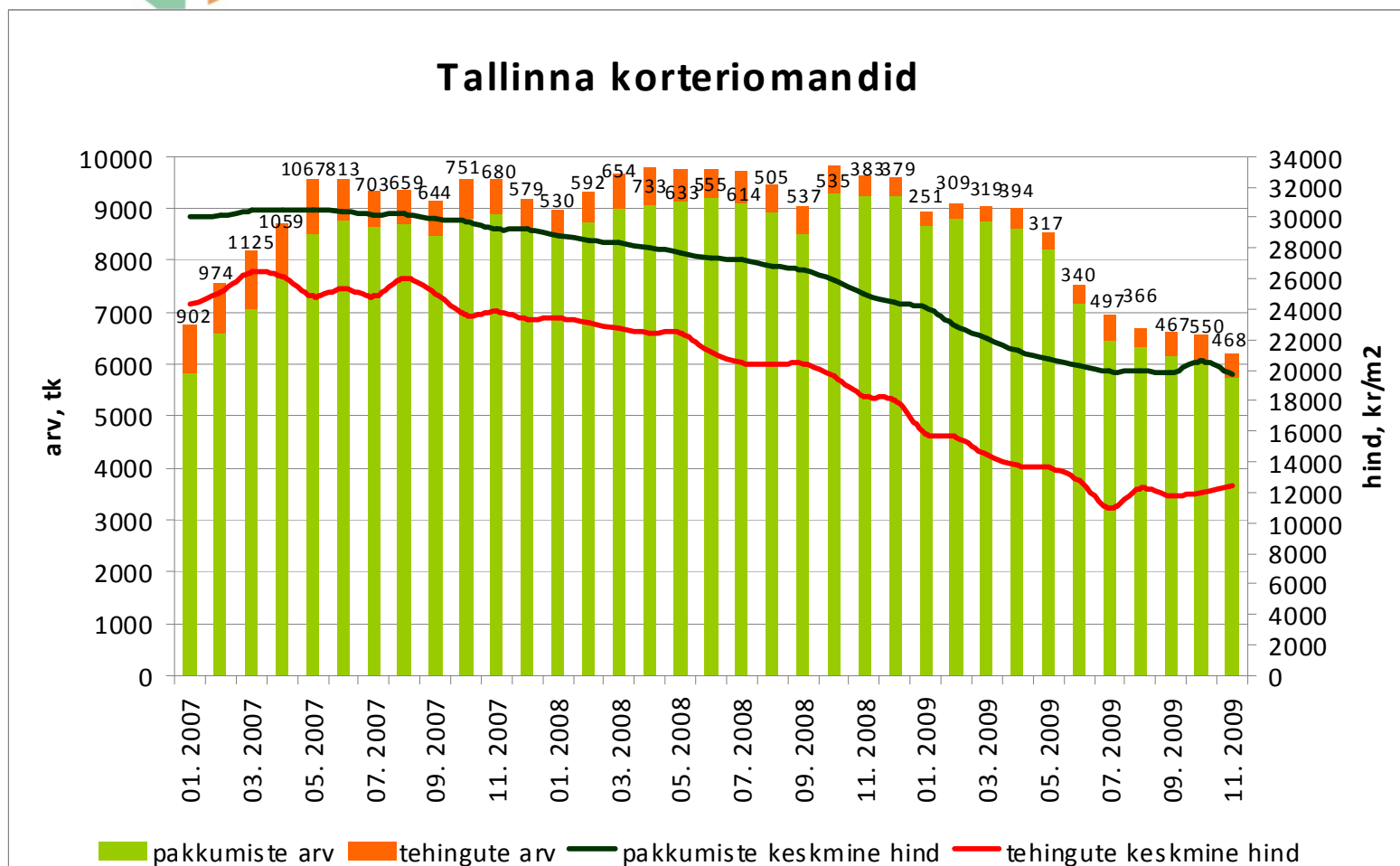
Allikad: Maa-amet, City24

Tehinguhind on langenud hinnatipust (juuni 2007.a.) 74% (november -19%)



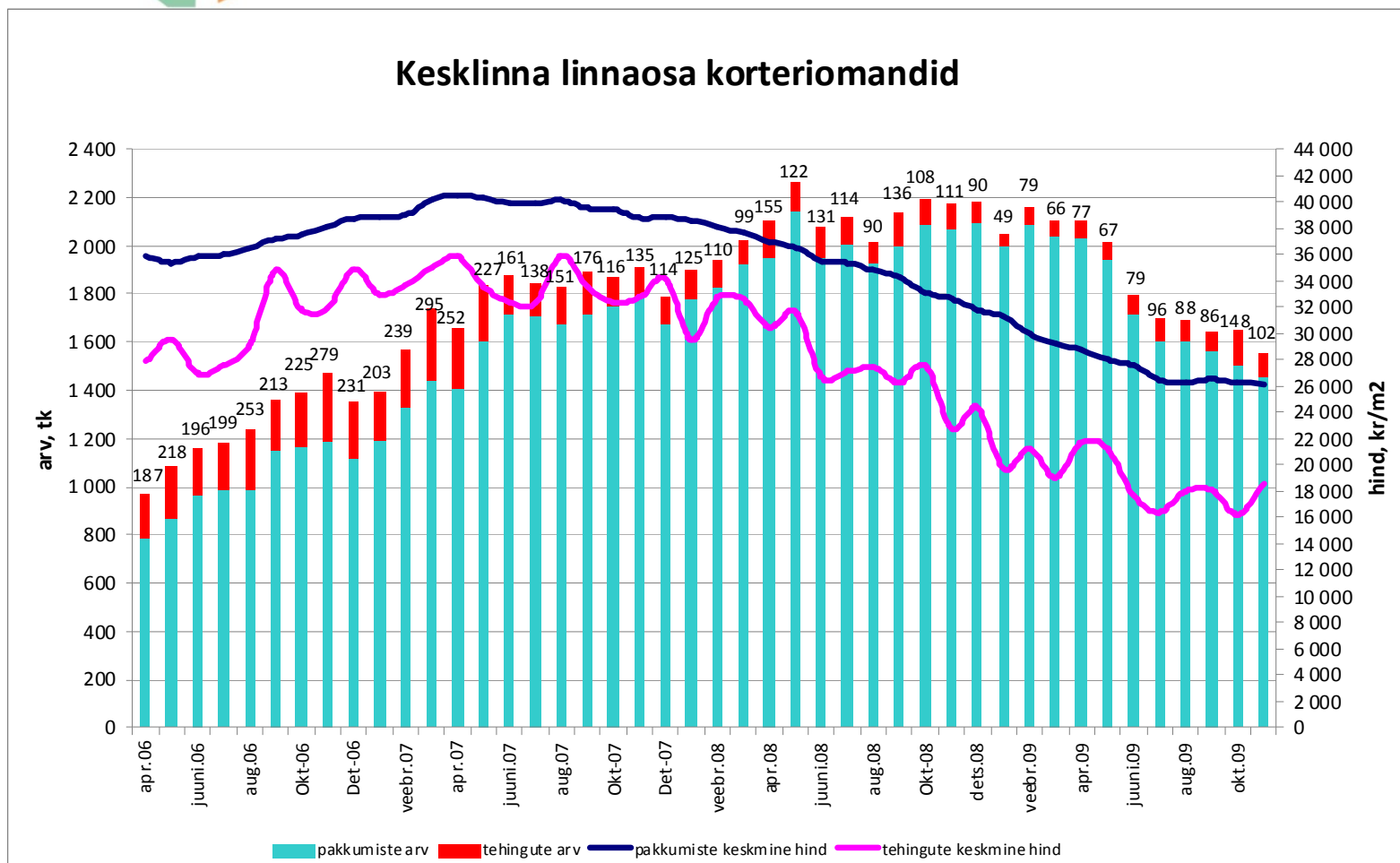
Allikad: Maa-amet, City24

Tehinguhind on langenud hinnatipust (märts 2007.a.) 53% (november +3,1%)



Allikad: Maa-amet, City24

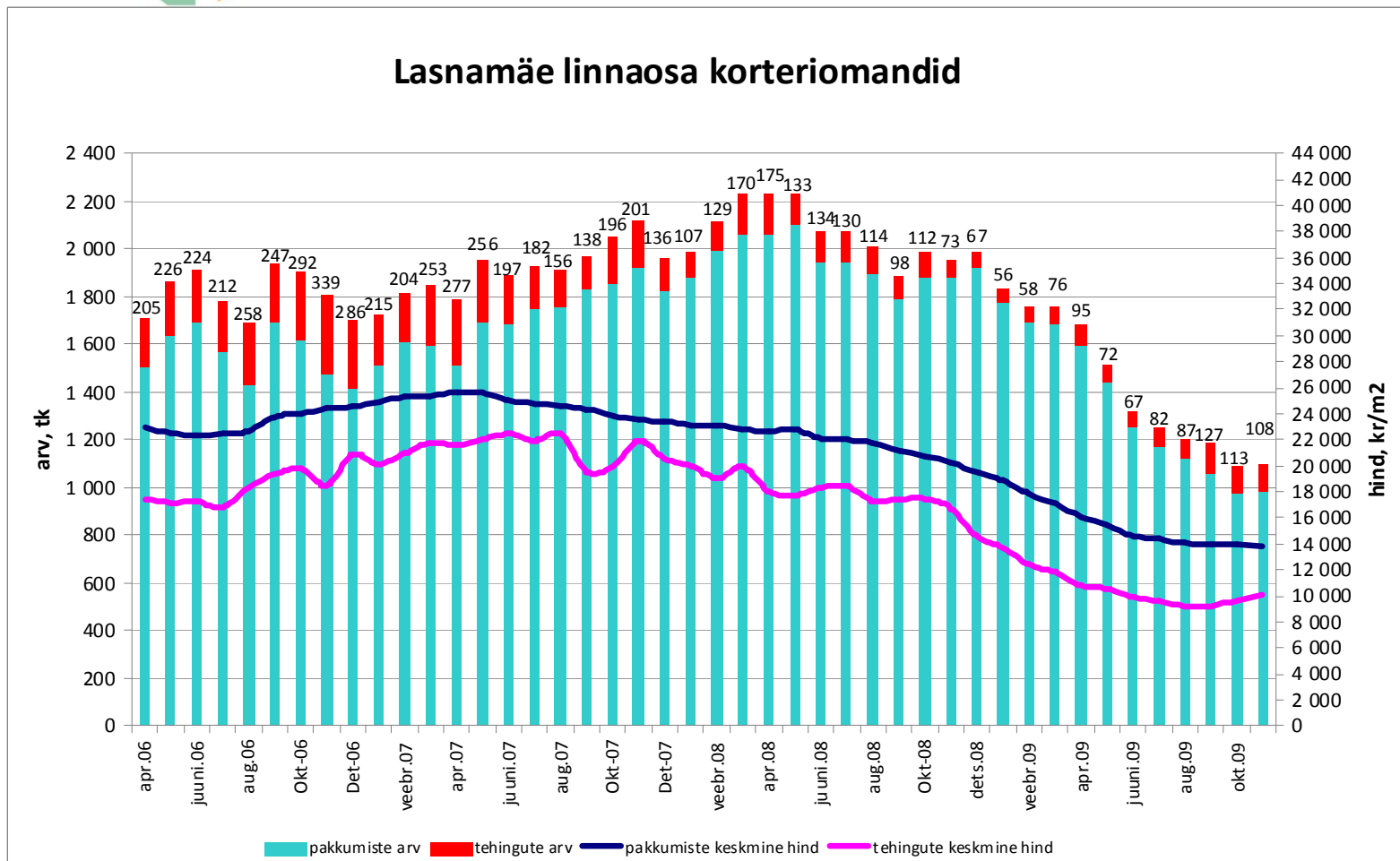
Tehinguhind on langenud hinnatipust (august 2007.a.) 48% (november +14,1%)



Allikad: Maa-amet, City24

Tehinguhind on langenud hinnatipust (juuni 2007.a.) 55% (november +4,3%)

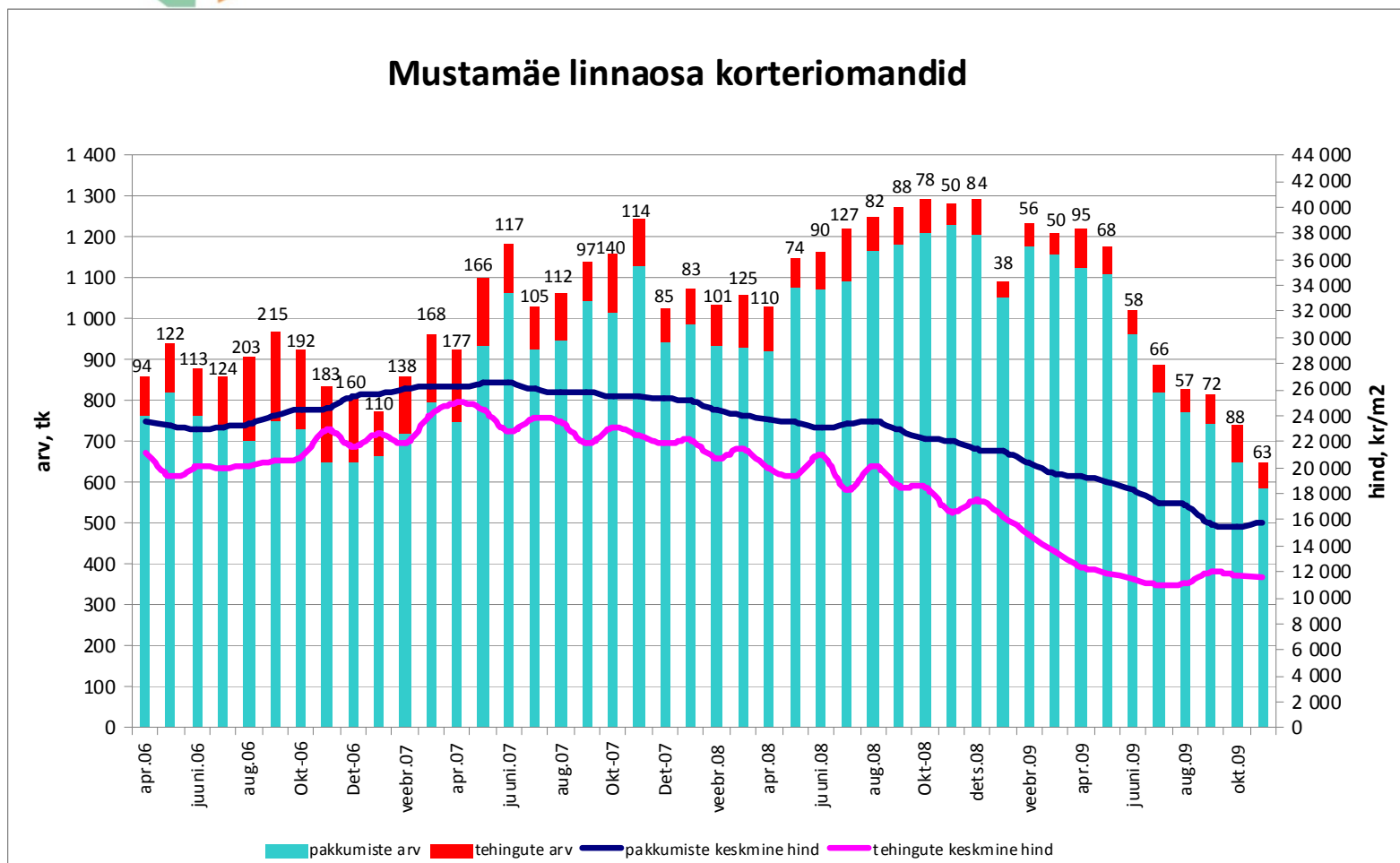
Lasnamäe linnaosa korteriomandid



Allikad: Maa-amet, City24

Tehinguhind on langenud hinnatipust (aprill 2007.a.) 54% (november -1,8%)

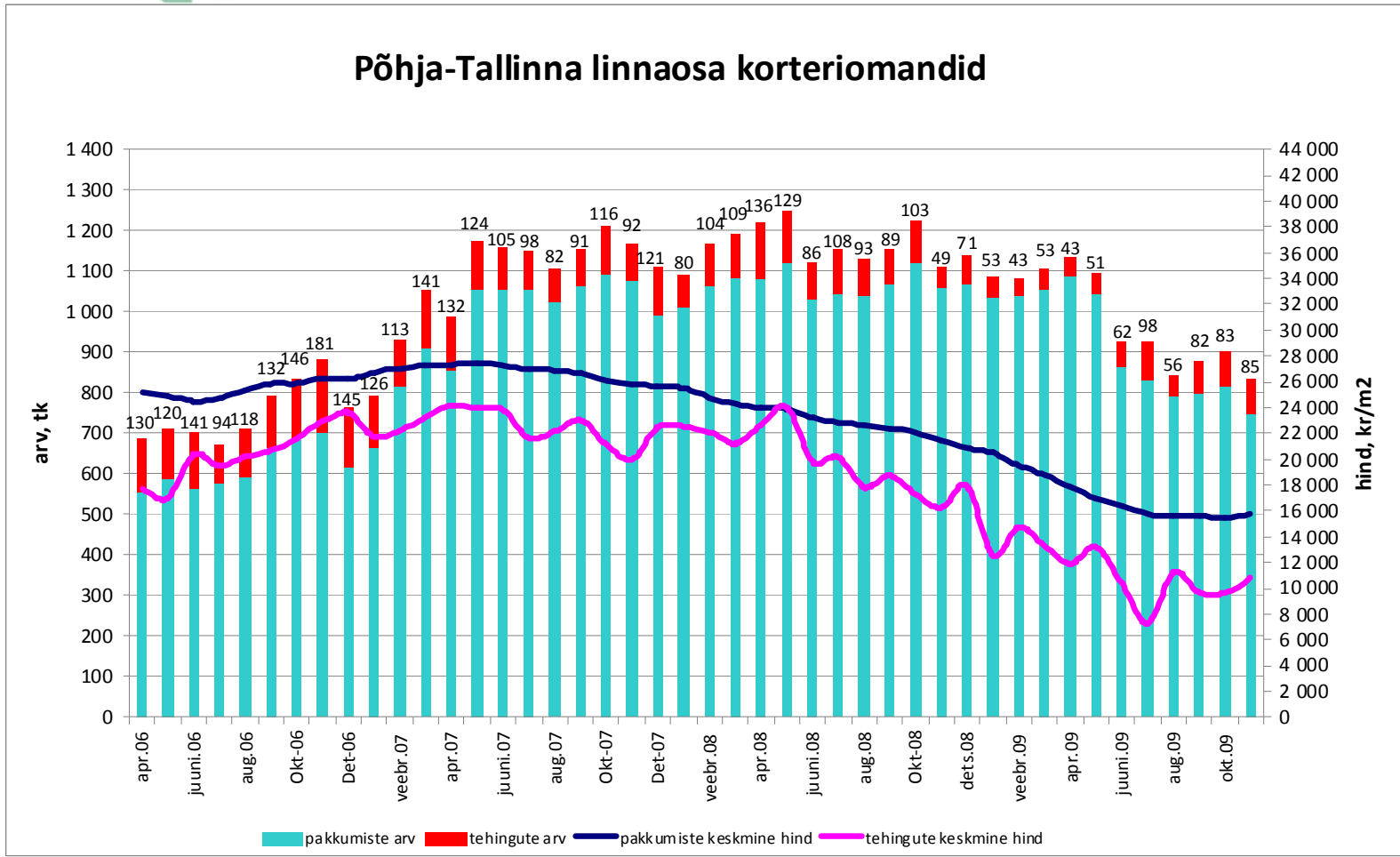
Mustamäe linnaosa korteriomandid



Allikad: Maa-amet, City24

Tehinguhind on langenud hinnatipust (aprill 2007.a.) 55% (november +12%)

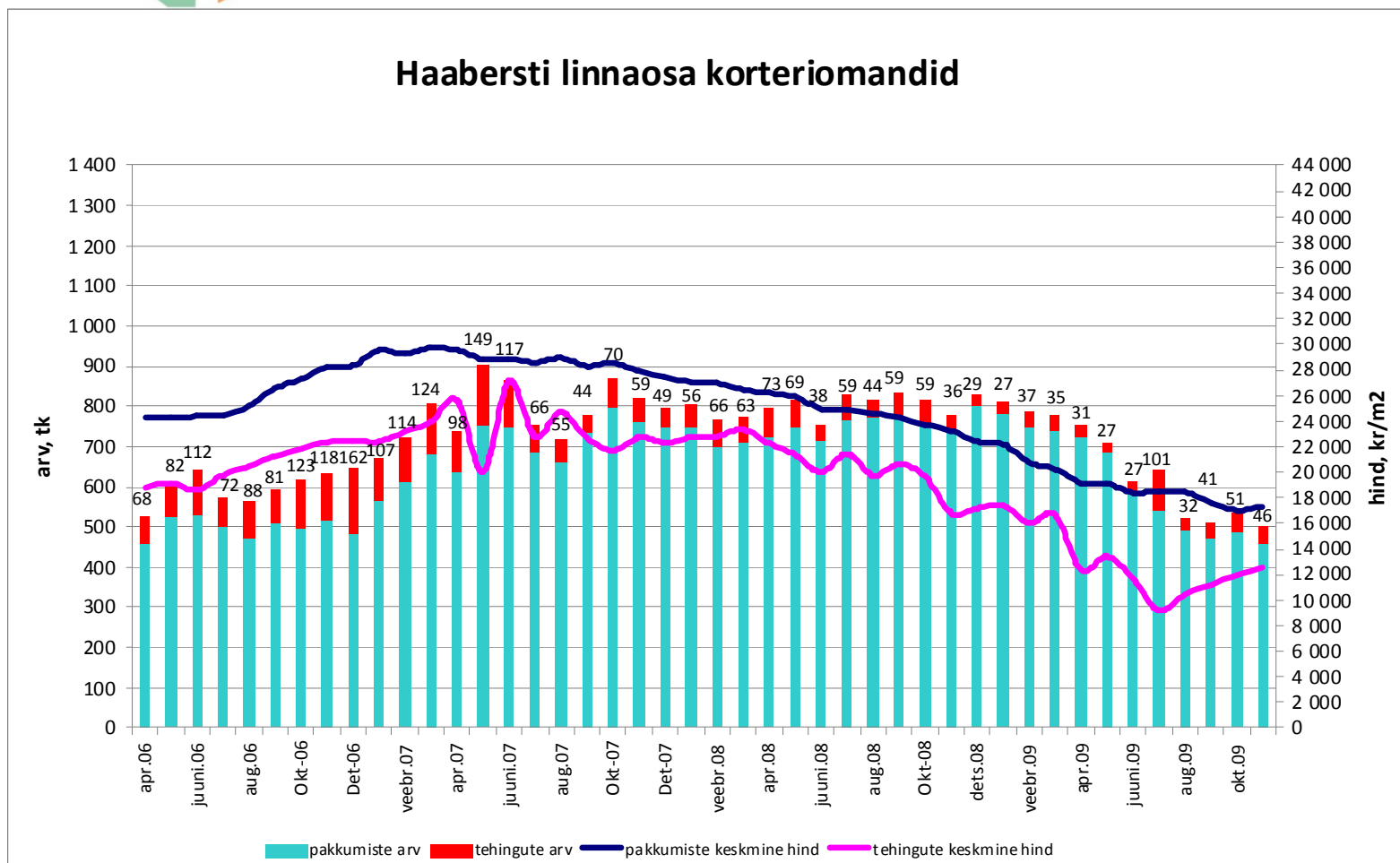
Põhja-Tallinna linnaosa korteriomandid



Allikad: Maa-amet, City24

Tehinguhind on langenud hinnatipust (juuni 2007.a.) 54% (november +5%)

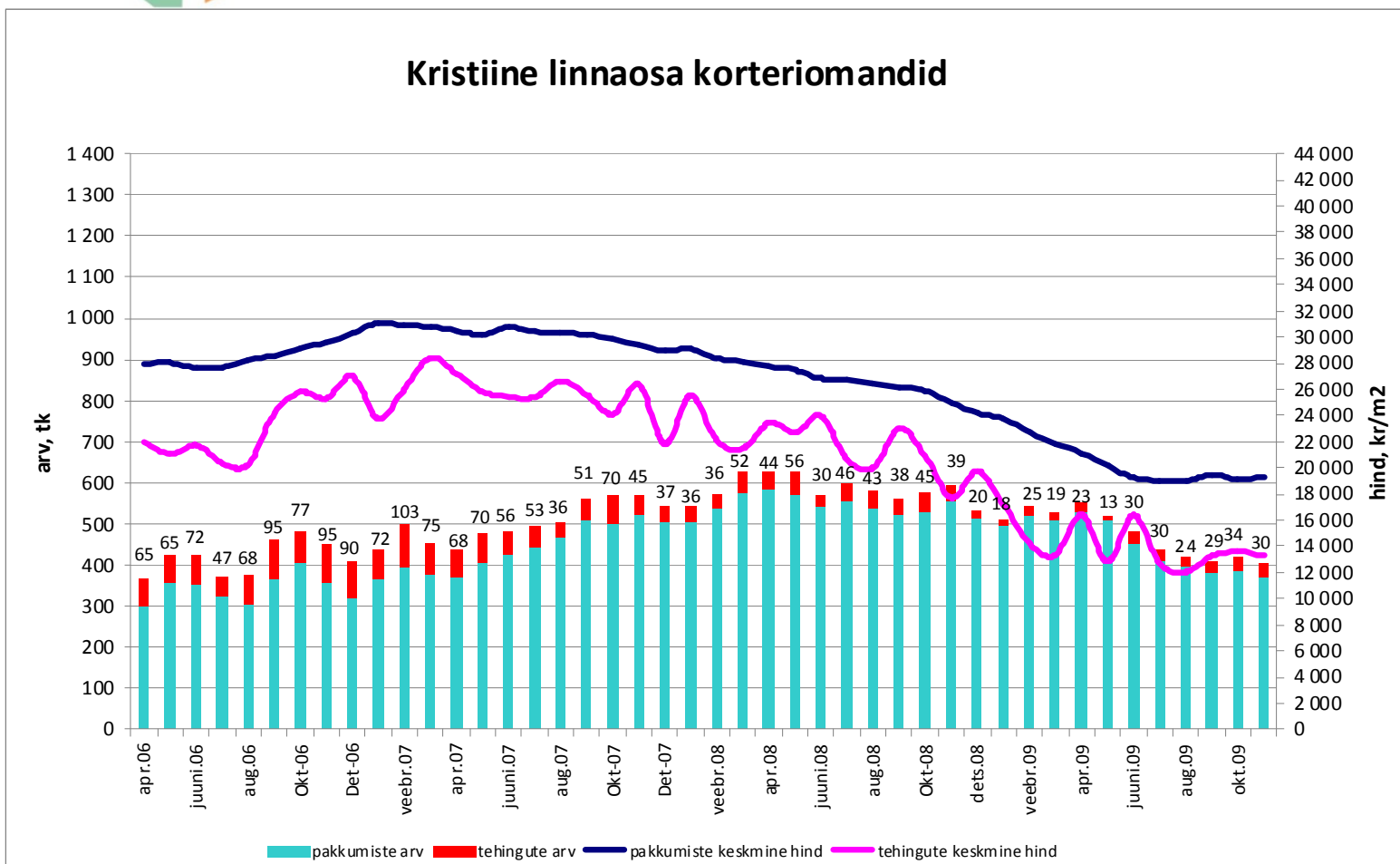
Haabersti linnaosa korteriomandid



Allikad: Maa-amet, City24

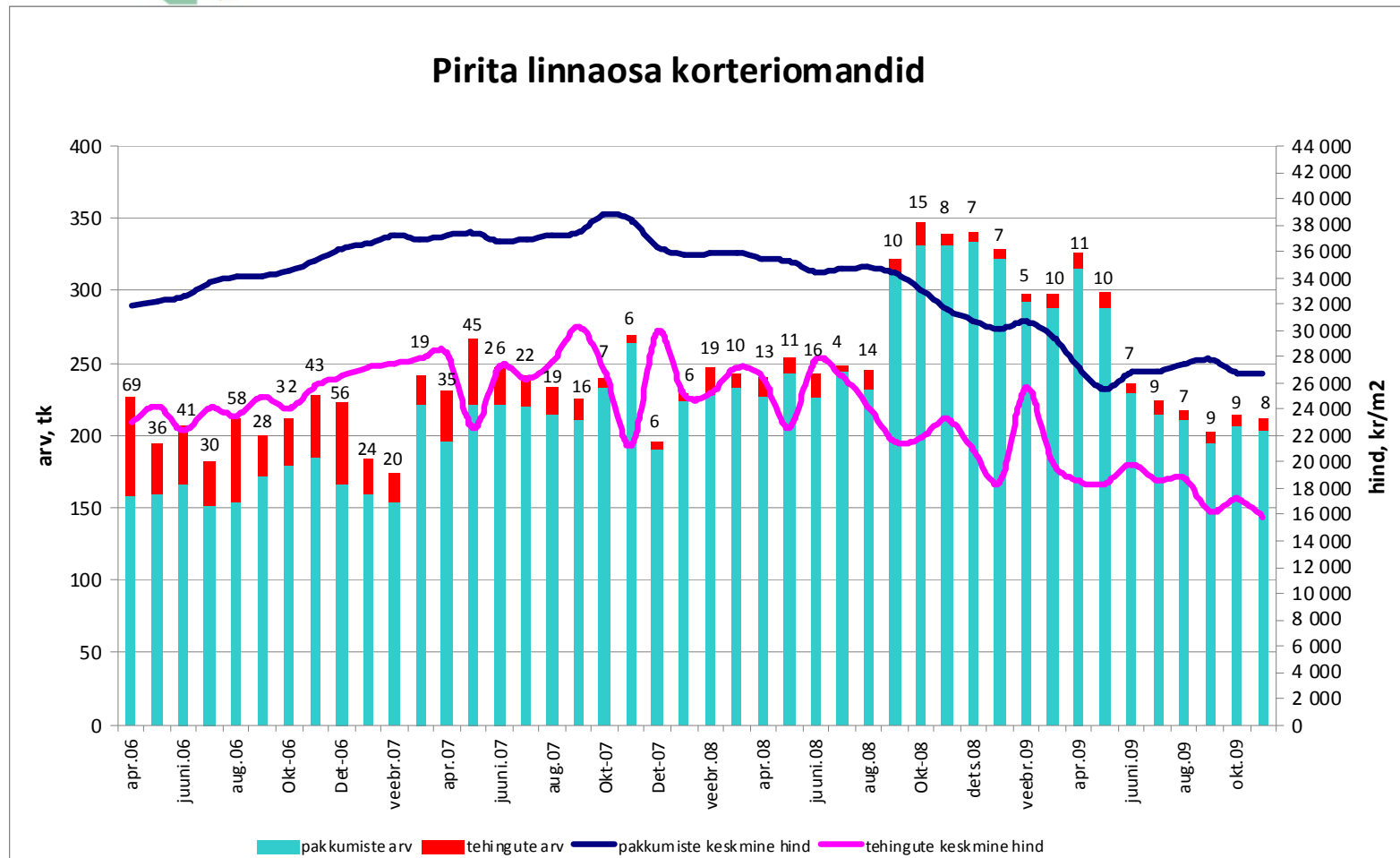
Tehinguhind on langenud hinnatipust (märts 2007.a.) 53% (november -2,4%)

Kristiine linnaosa korteriomandid



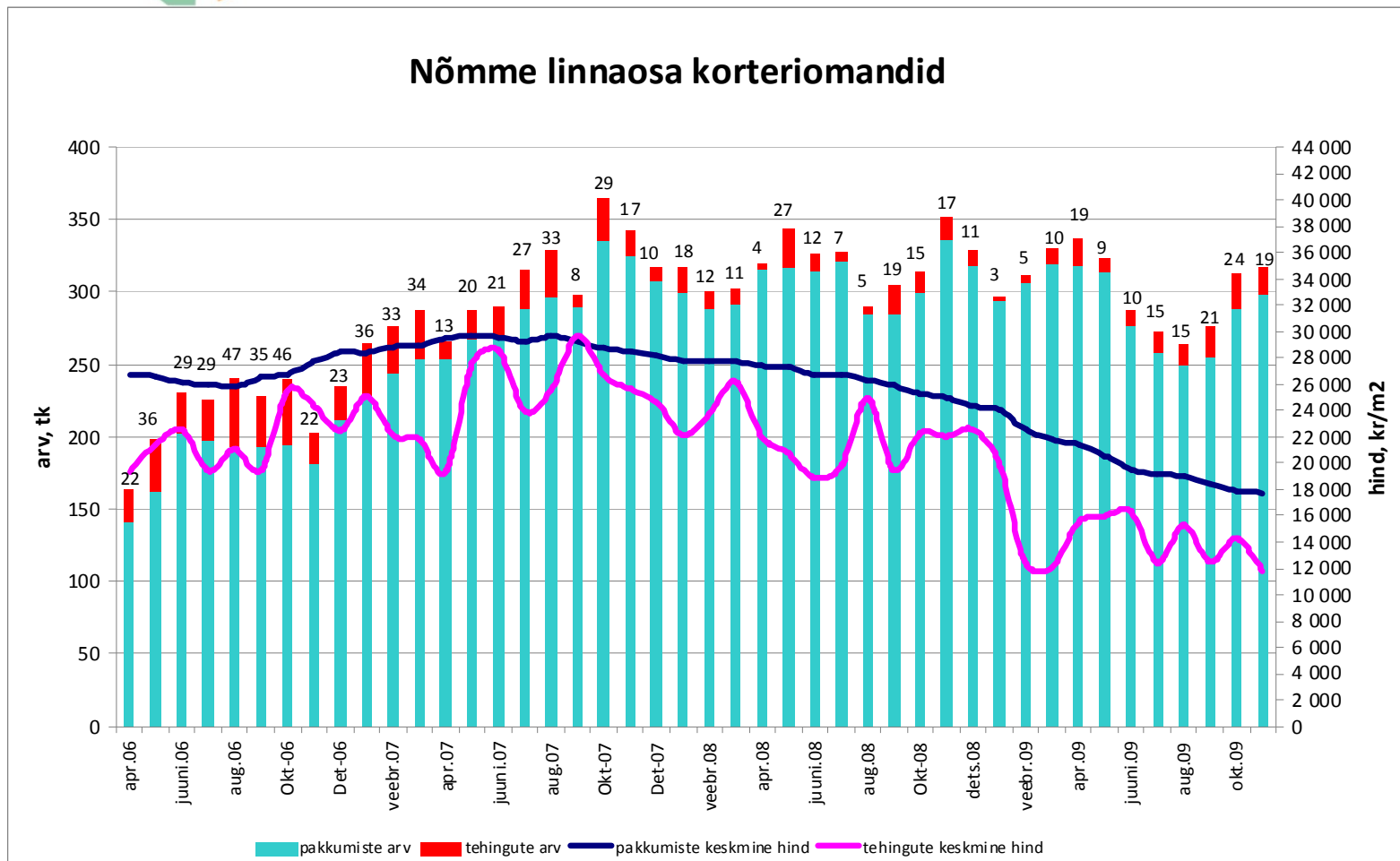
Allikad: Maa-amet, City24

Tehinguhind on langenud hinnatipust (september 2007.a.) 48% (november -7,8%)



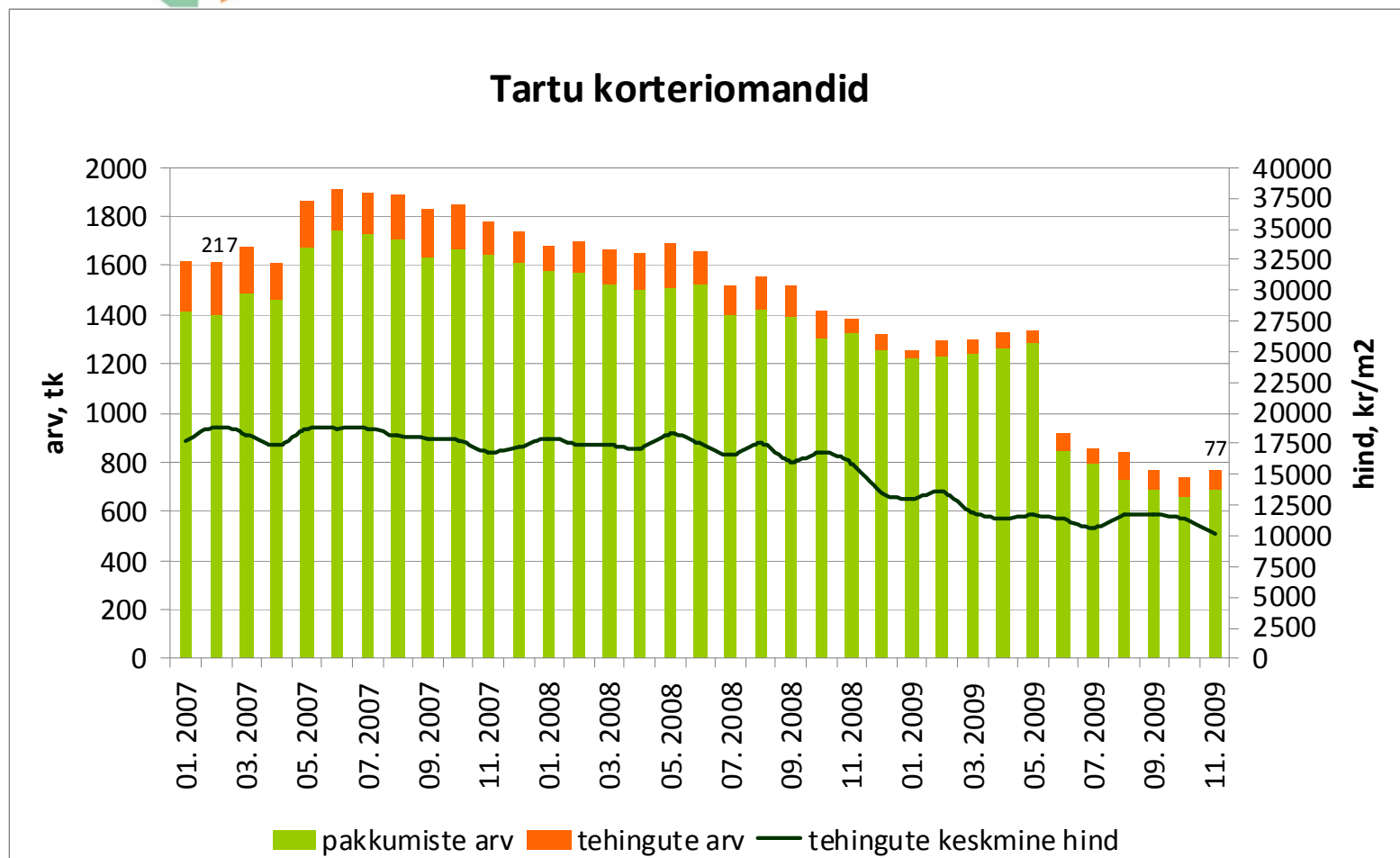
Allikad: Maa-amet, City24

Tehinguhind on langenud hinnatipust (september 2007.a.) 60% (november -17,2%)



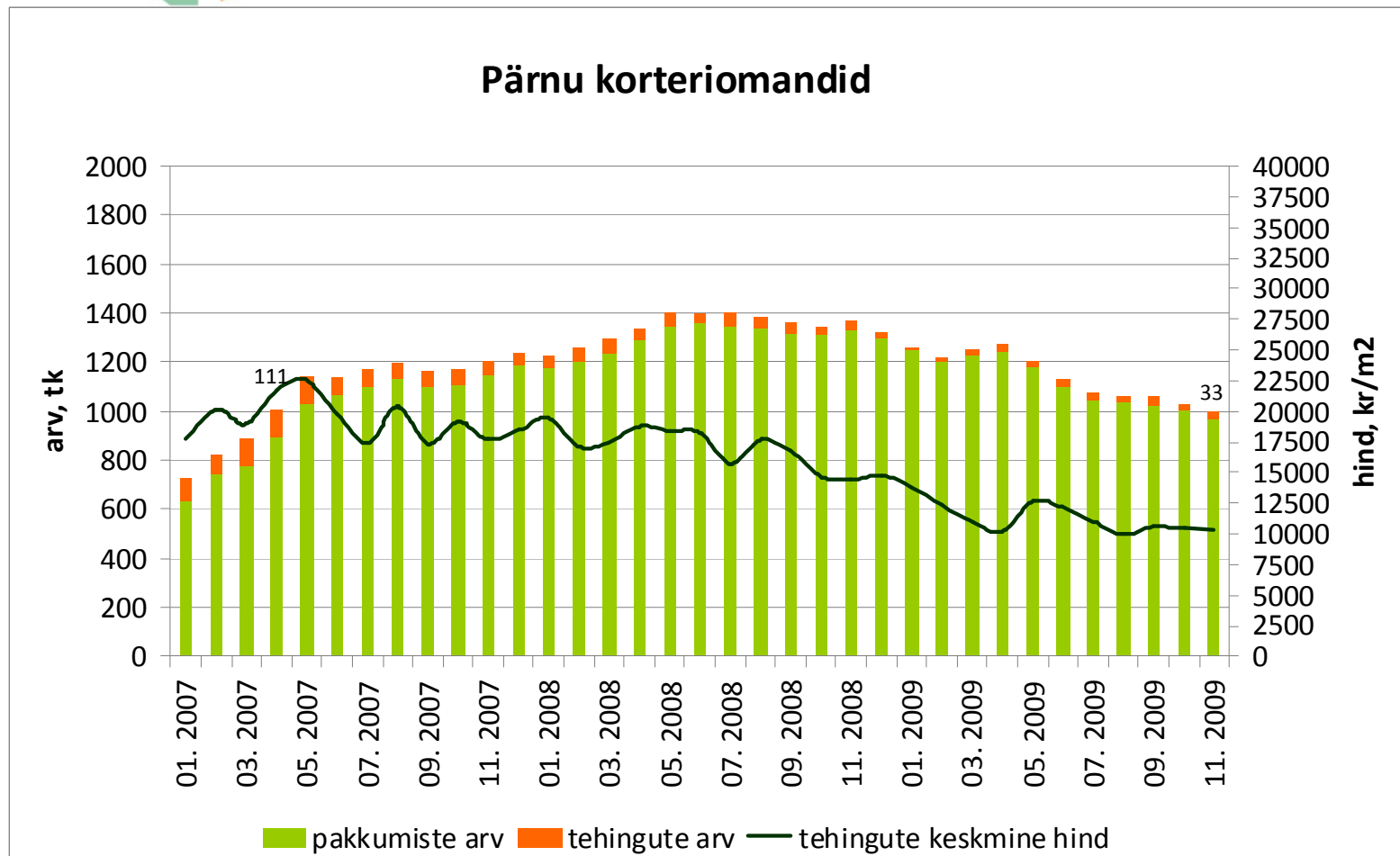
Allikad: Maa-amet, City24

Tehinguhind on langenud hinnatipust (veebruar 2007.a.) 46% (november -10,7%)



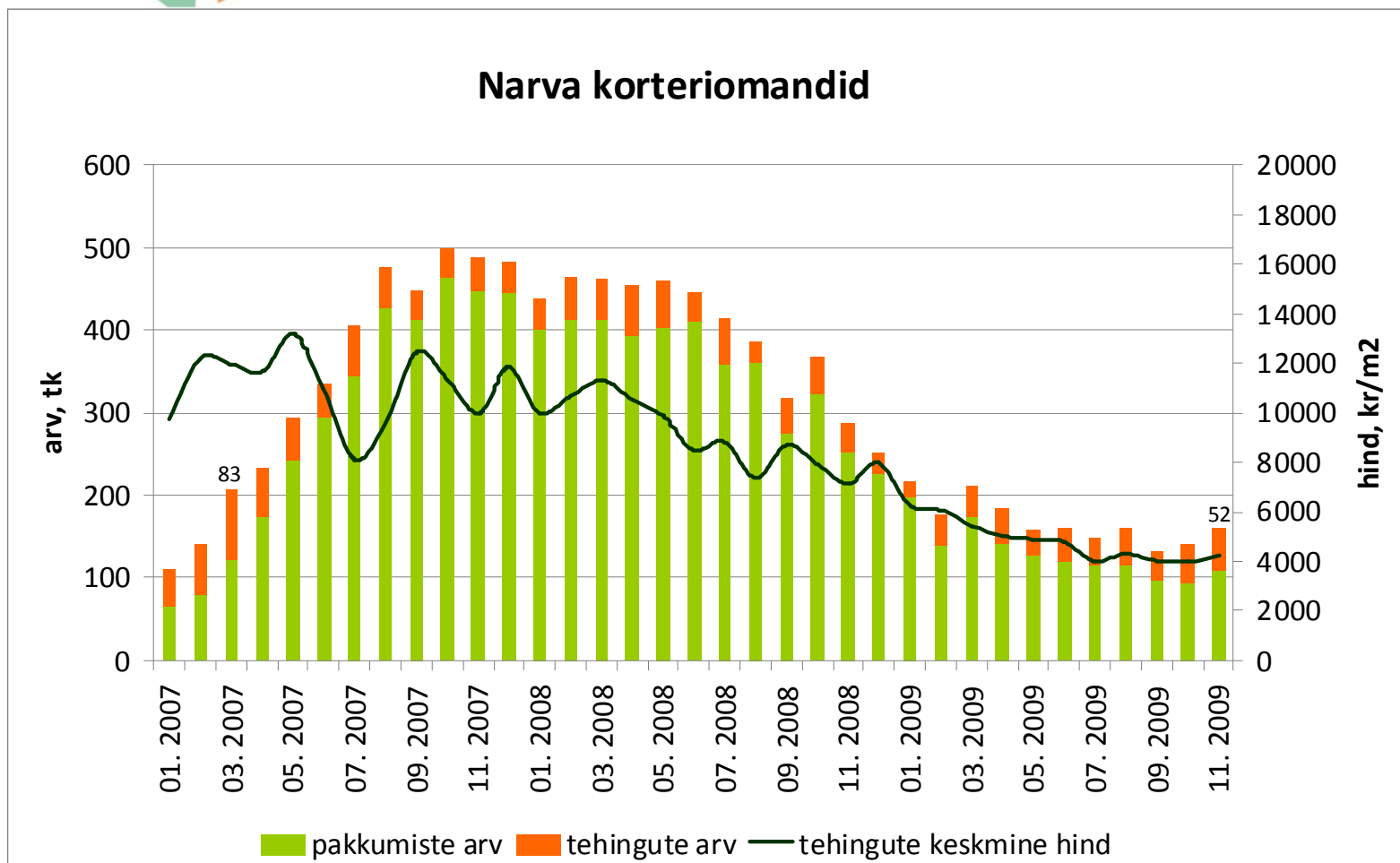
Allikad: Maa-amet, City24

**Tehinguhind on langenud hinnatipust
(mai 2007.a.) 54% (november -0,8%)**



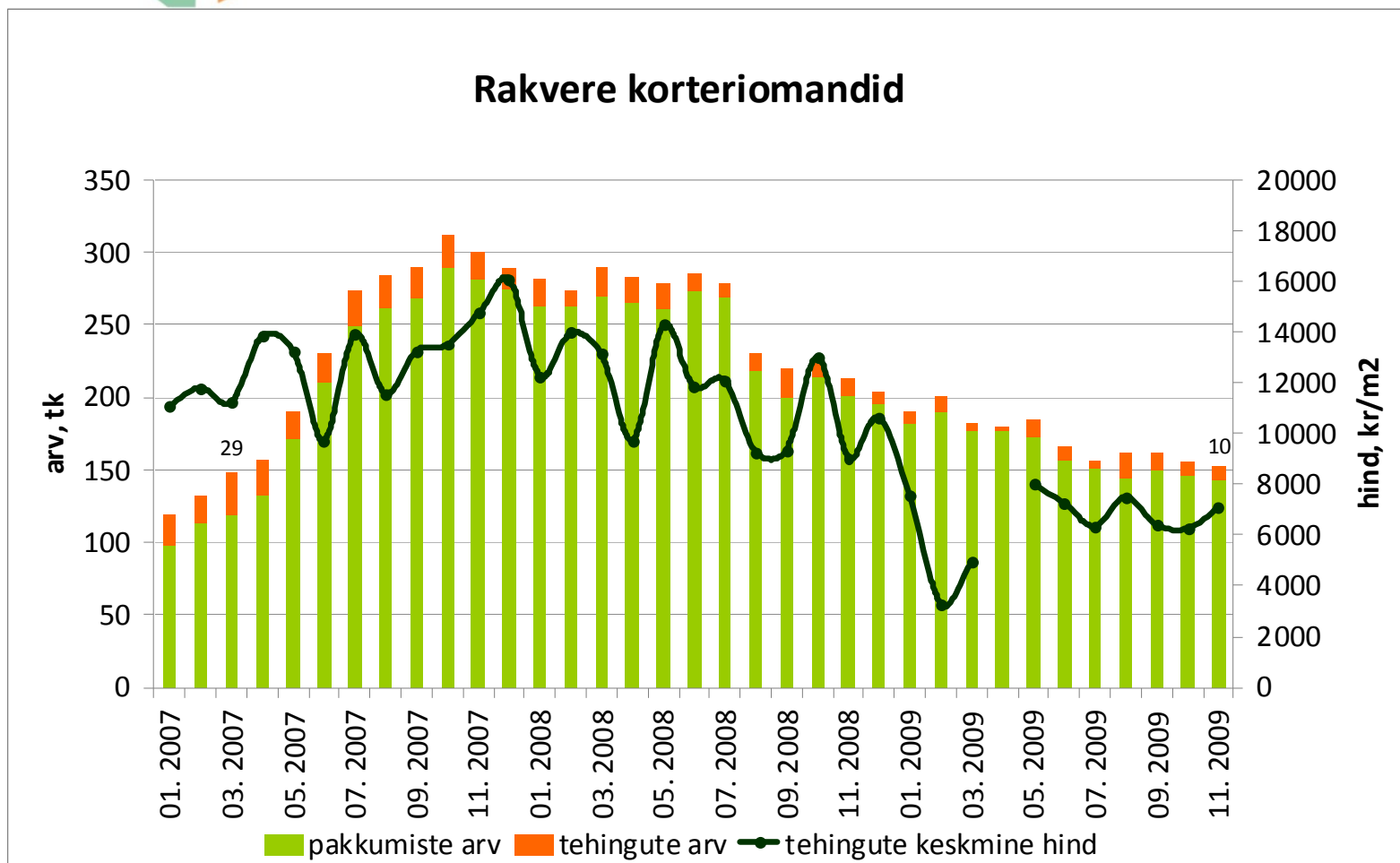
Allikad: Maa-amet, City24

Tehinguhind on langenud hinnatipust (mai 2007.a.) 68% (november +5,1%)



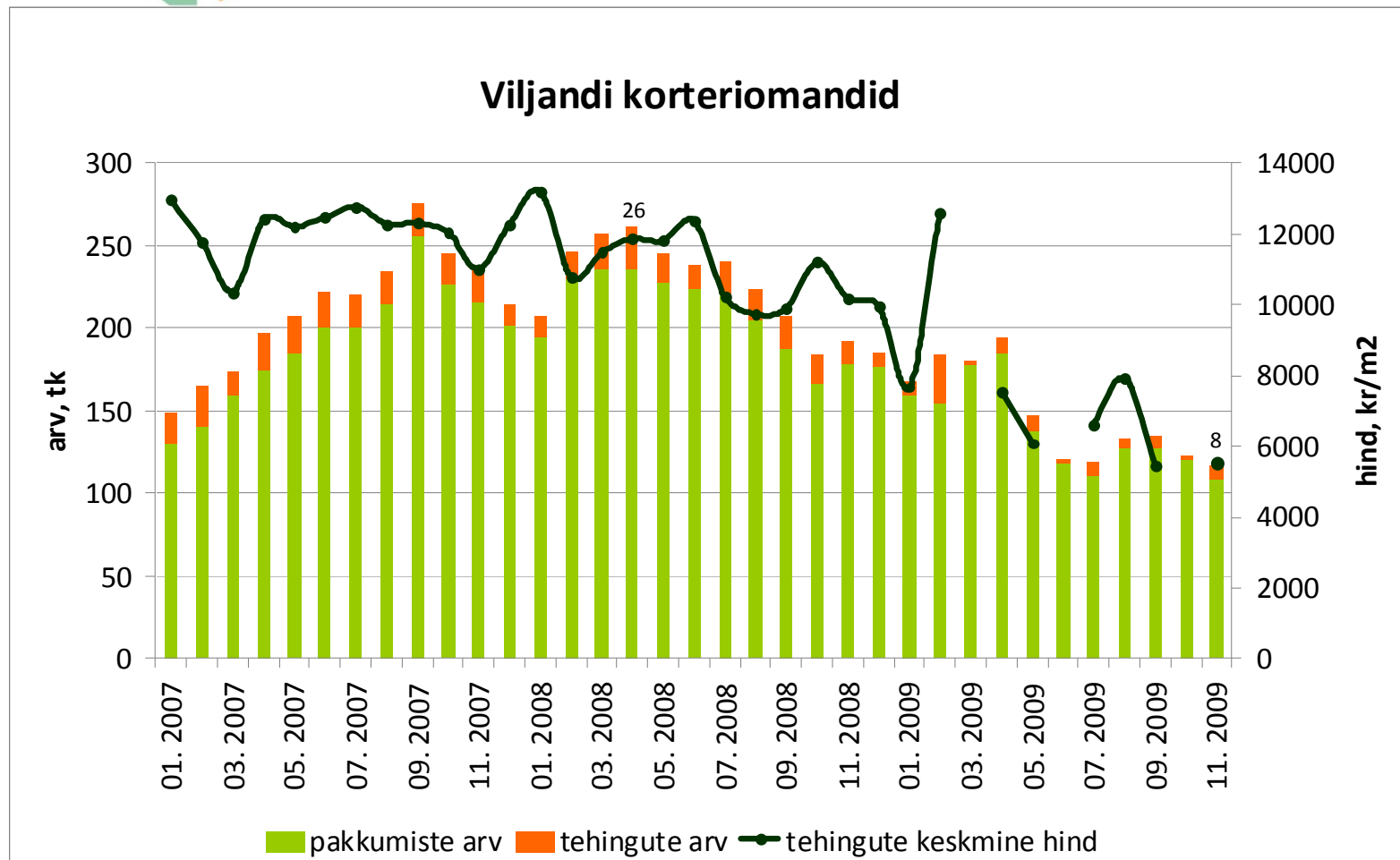
Allikad: Maa-amet, City24

Tehinguhind on langenud hinnatipust (detsember 2007.a.) 56% (november +13,3%)



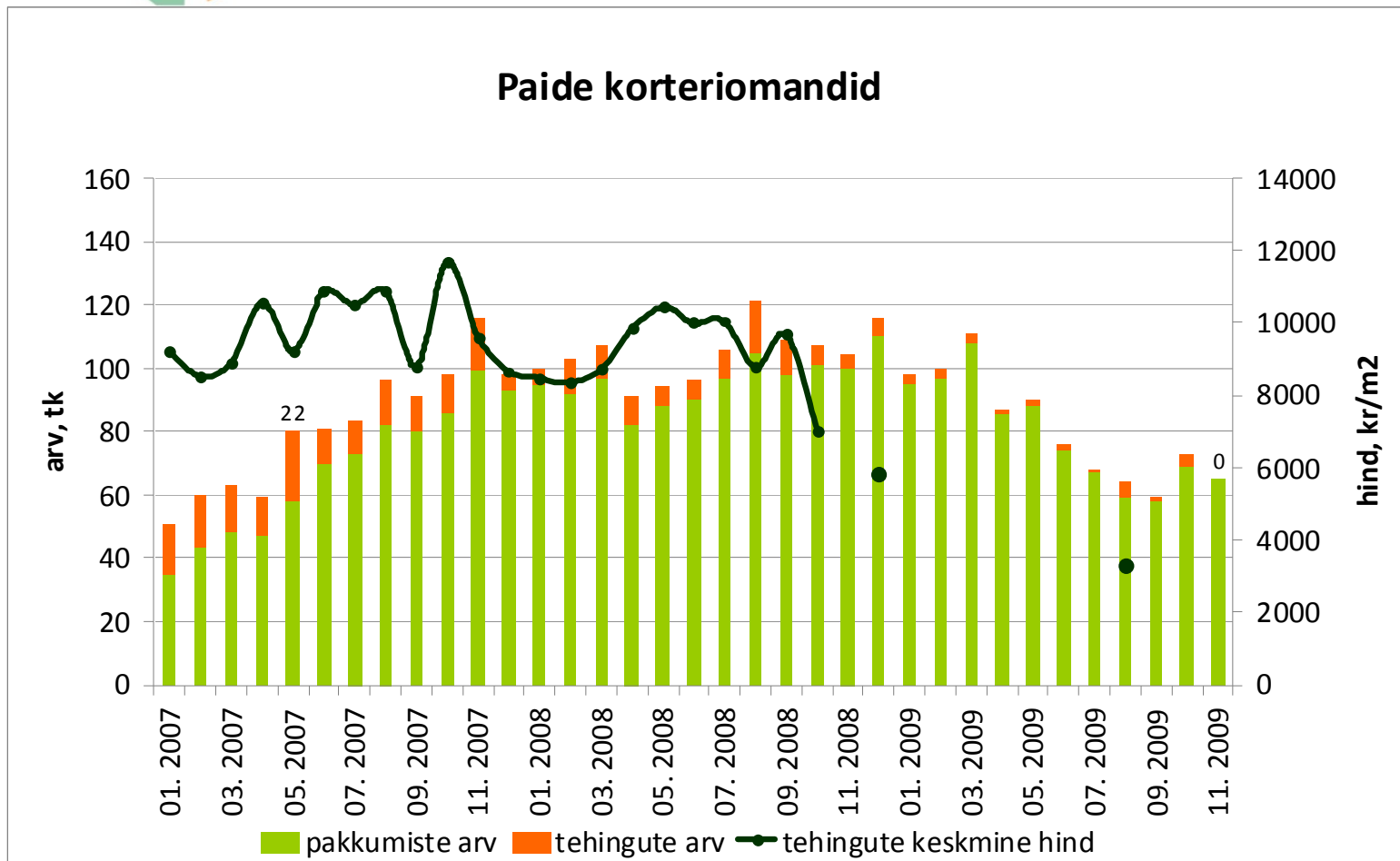
Allikad: Maa-amet, City24

Tehinguhind on langenud hinnatipust (jaanuar 2008.a.) 58%



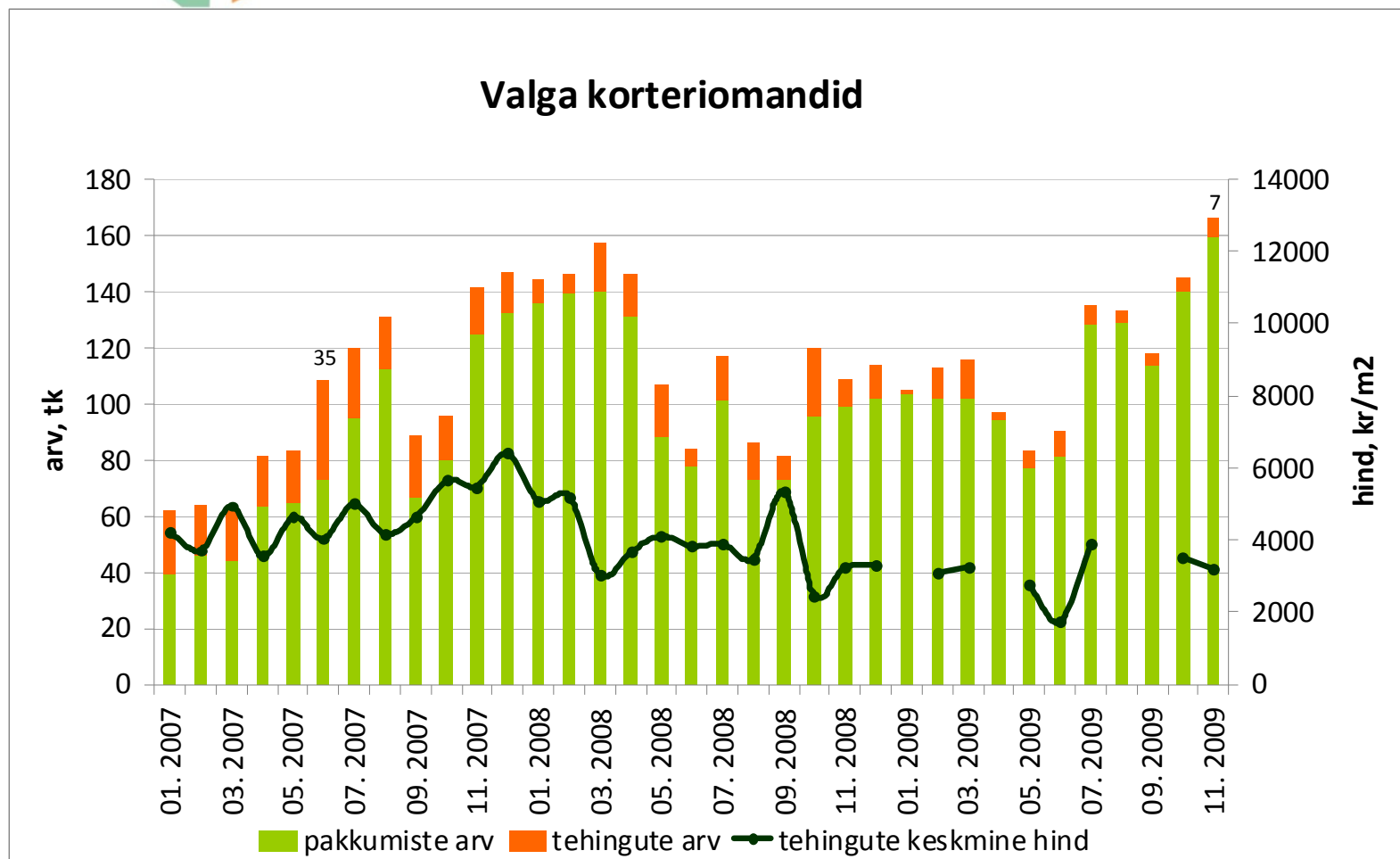
Allikad: Maa-amet, City24

Tehinguhind on langenud hinnatipust (oktoober 2007.a.) ca 72%



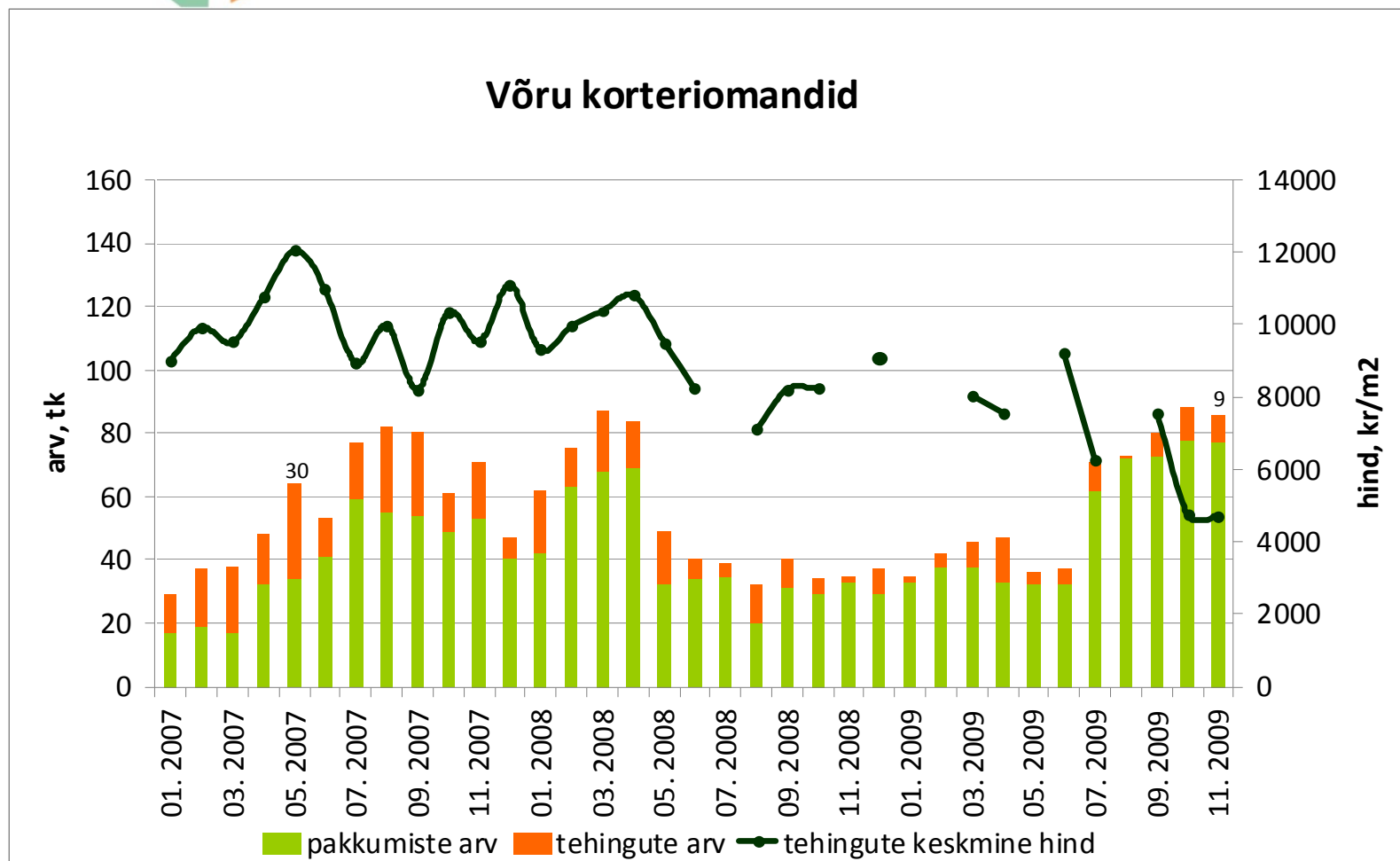
Allikad: Maa-amet, City24

Tehinguhind on langenud hinnatipust (detsember 2007.a.) 50% (november -18,3%)



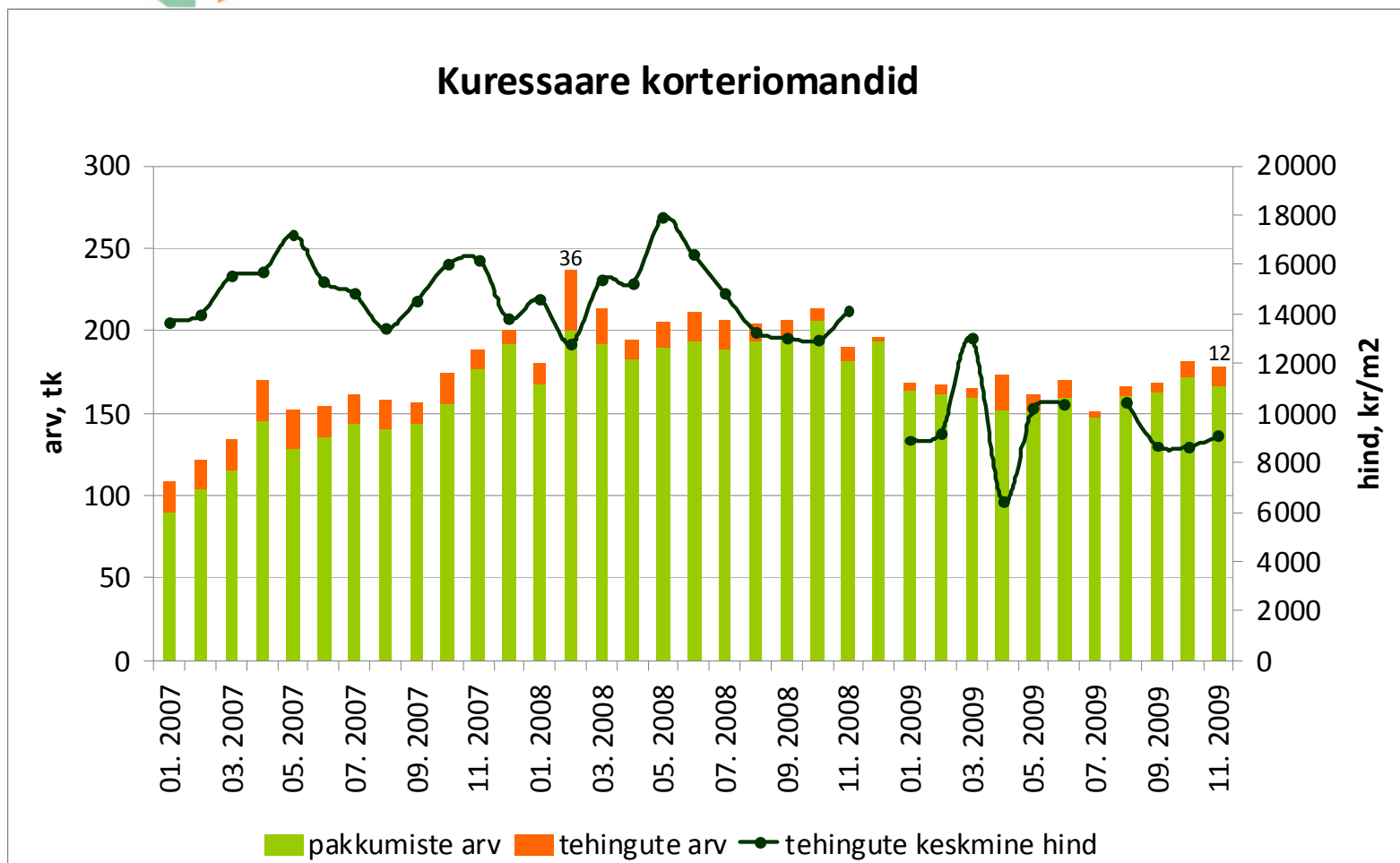
Allikad: Maa-amet, City24

Tehinguhind on langenud hinnatipust (mai 2007.a.) 61% (november -0,7%)



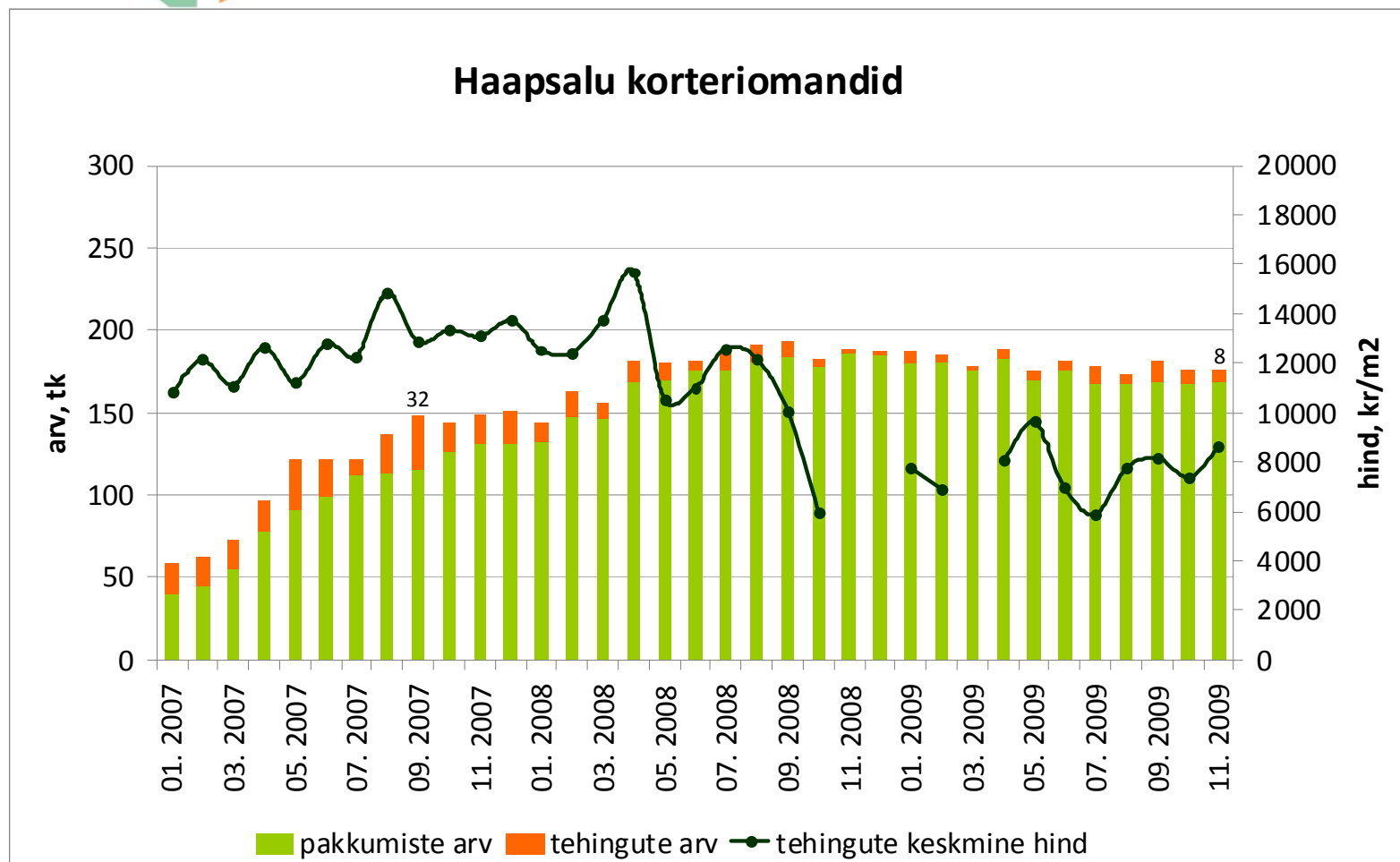
Allikad: Maa-amet, City24

Tehinguhind on langenud hinnatipust (mai 2008.a.) 49% (november +4,6%)



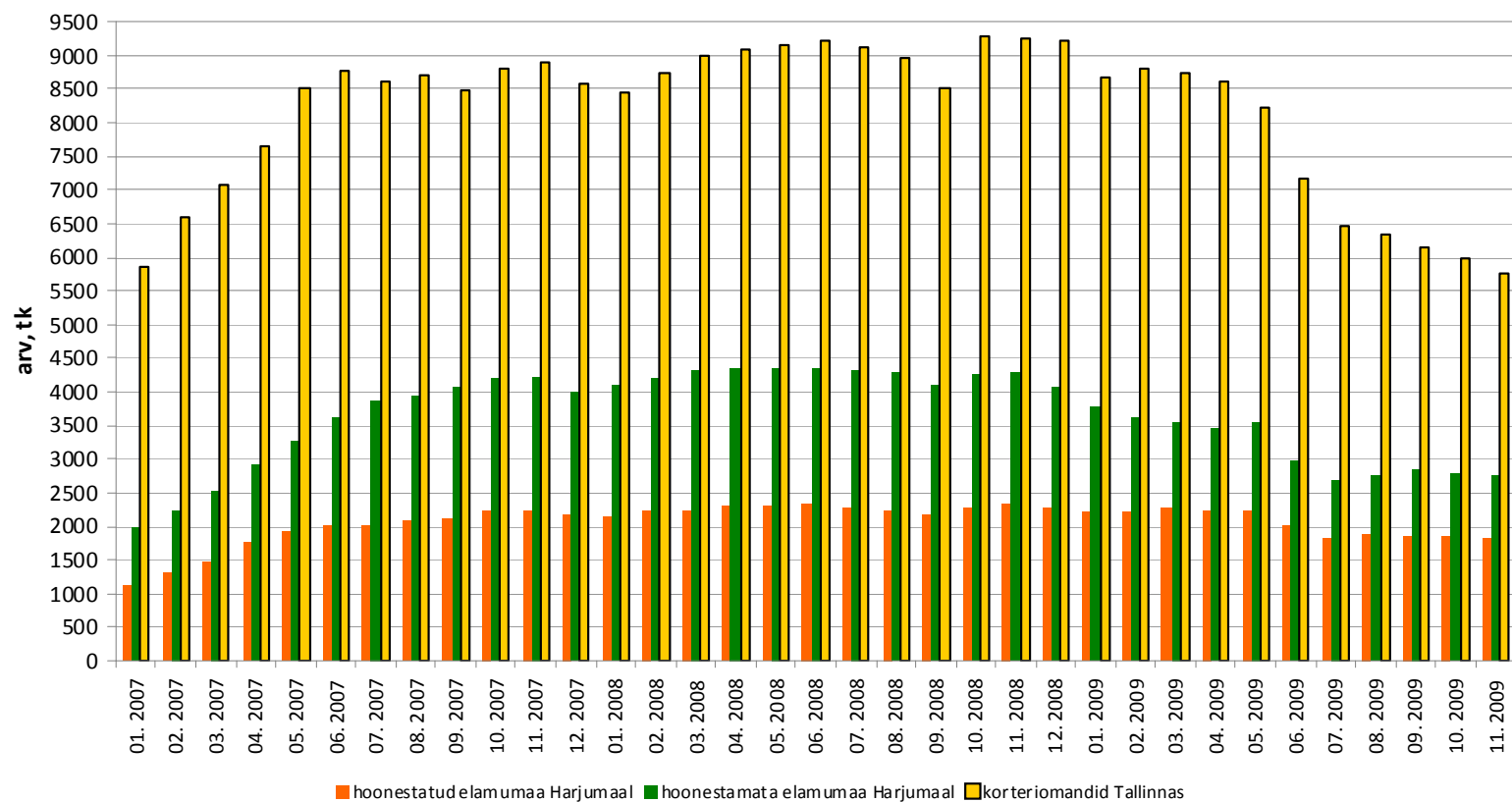
Allikad: Maa-amet, City24

Tehinguhind on langenud hinnatipust (aprill 2008.a.) 45% (november +16,6%)

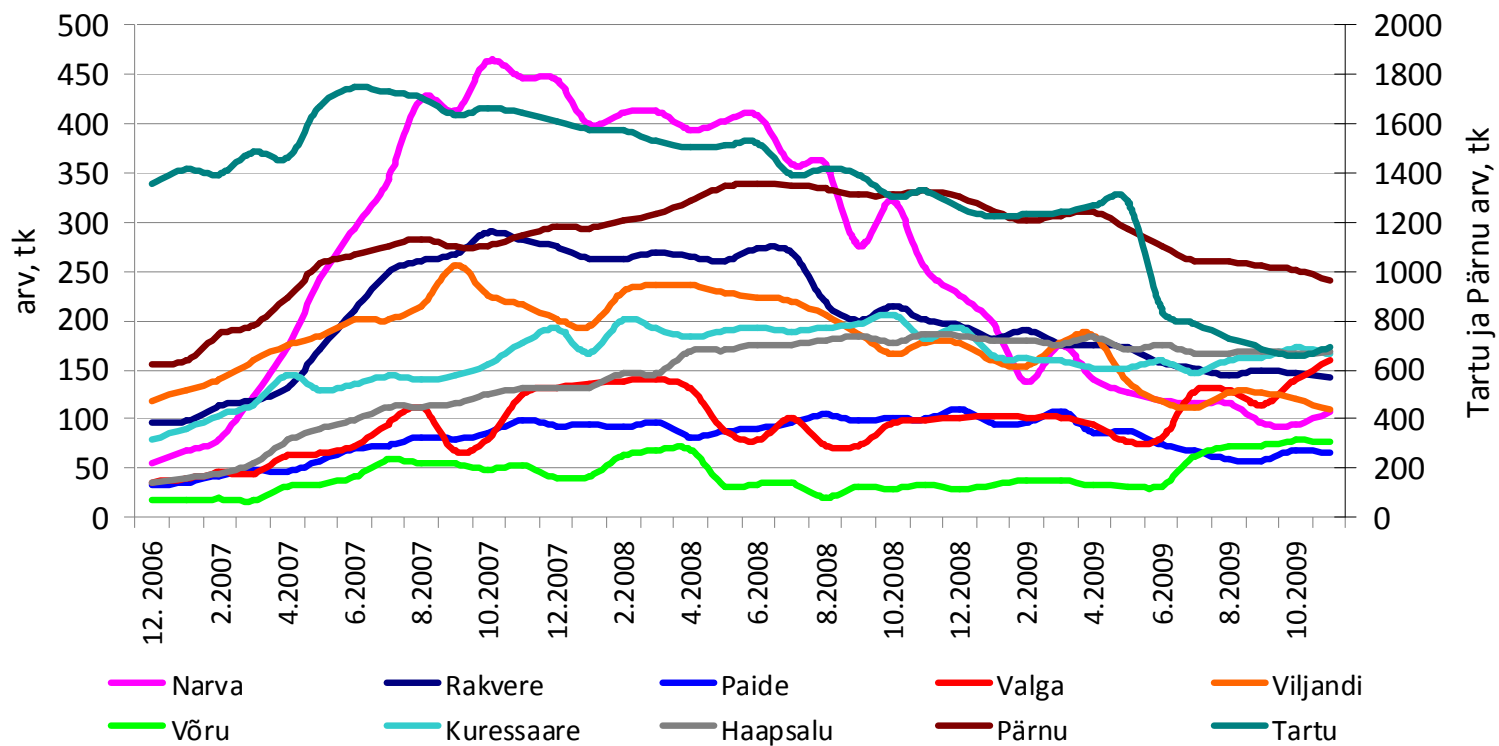


Allikad: Maa-amet, City24

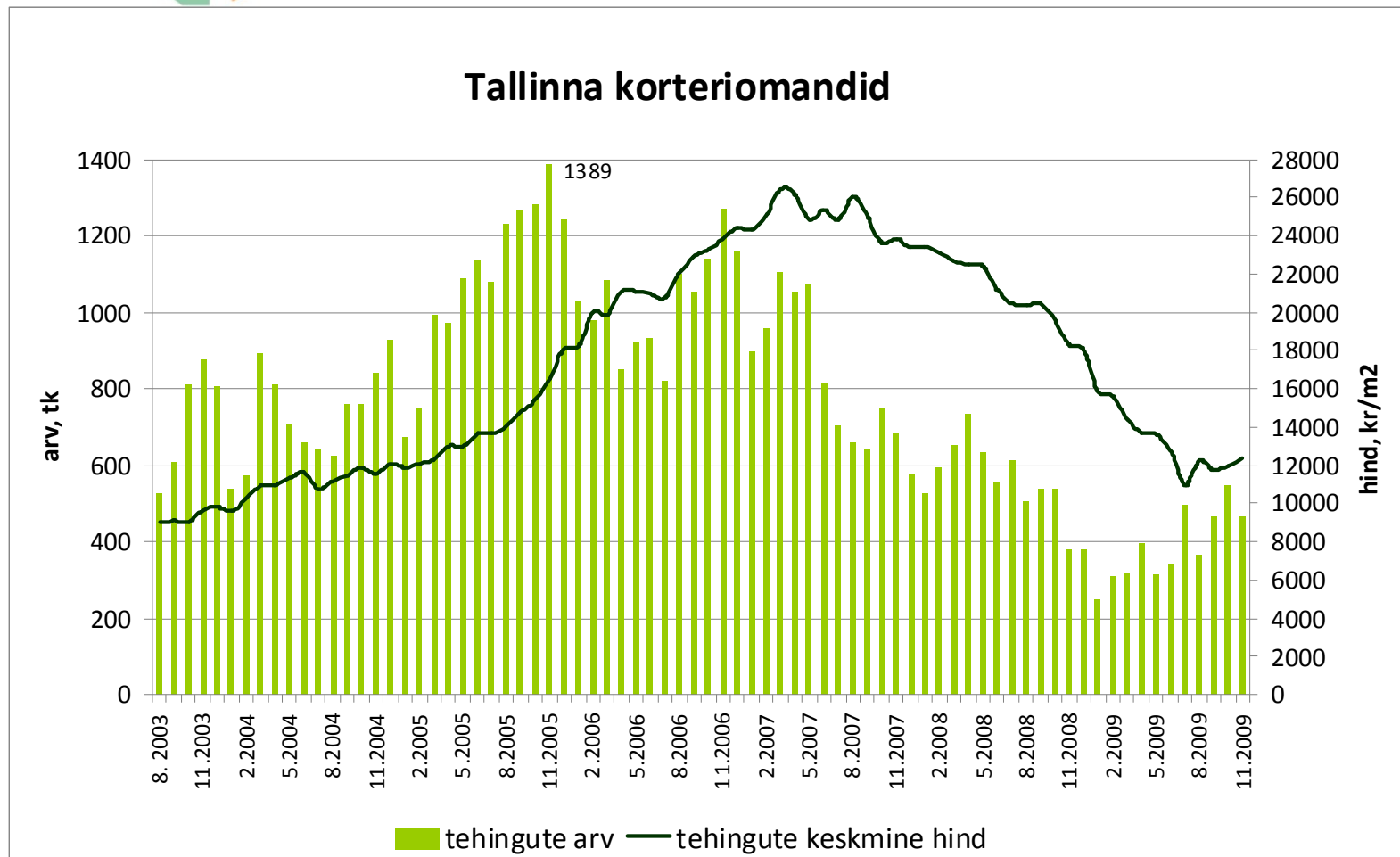
Elukondliku kinnisvara pakkumiste arv



Korterimandite pakkumiste arv Eesti linnades (City24 baasil)

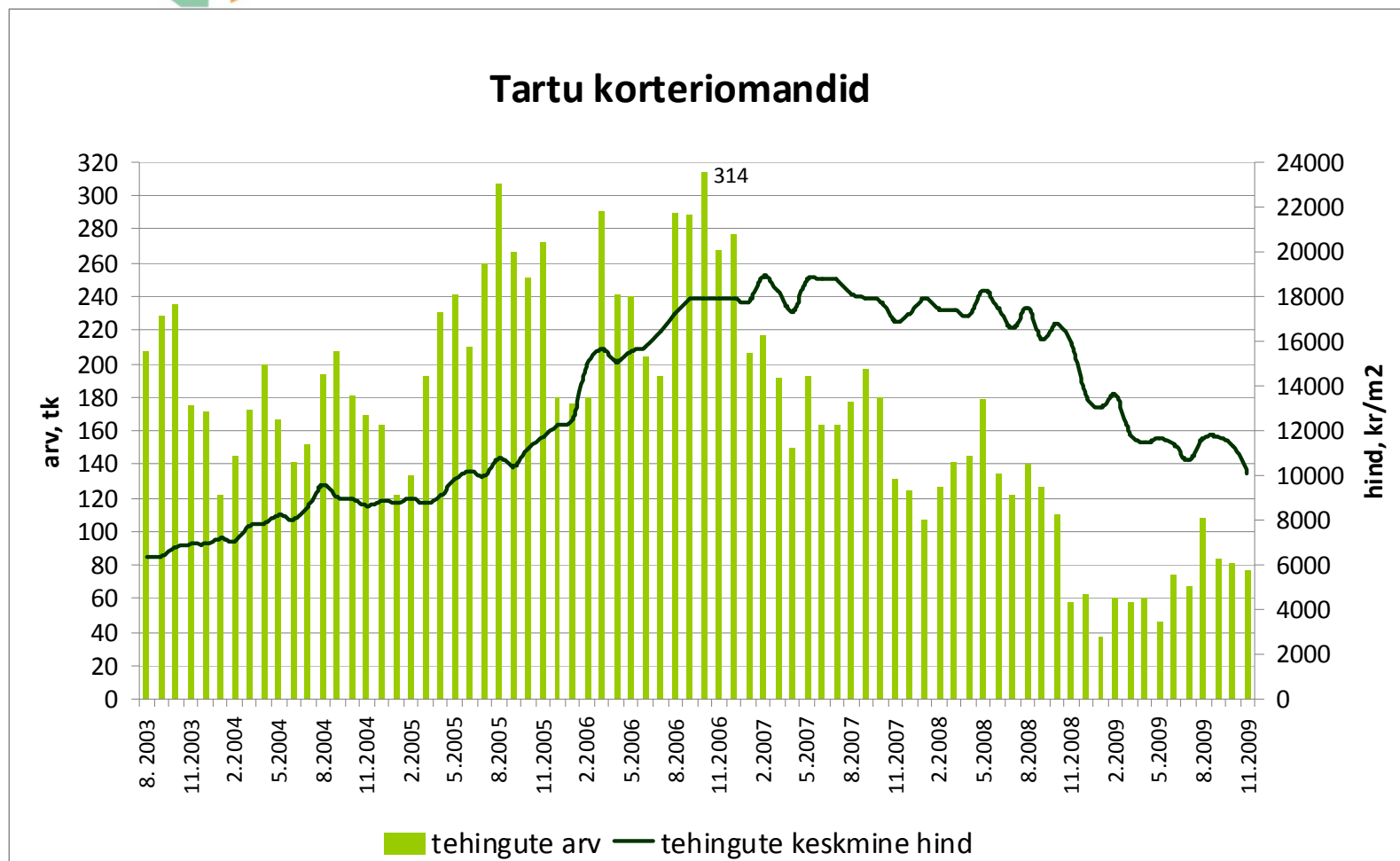


**Tehinguhind on langenud hinnatipust
(märts 2007.a.) 53% (november +3,1%)**



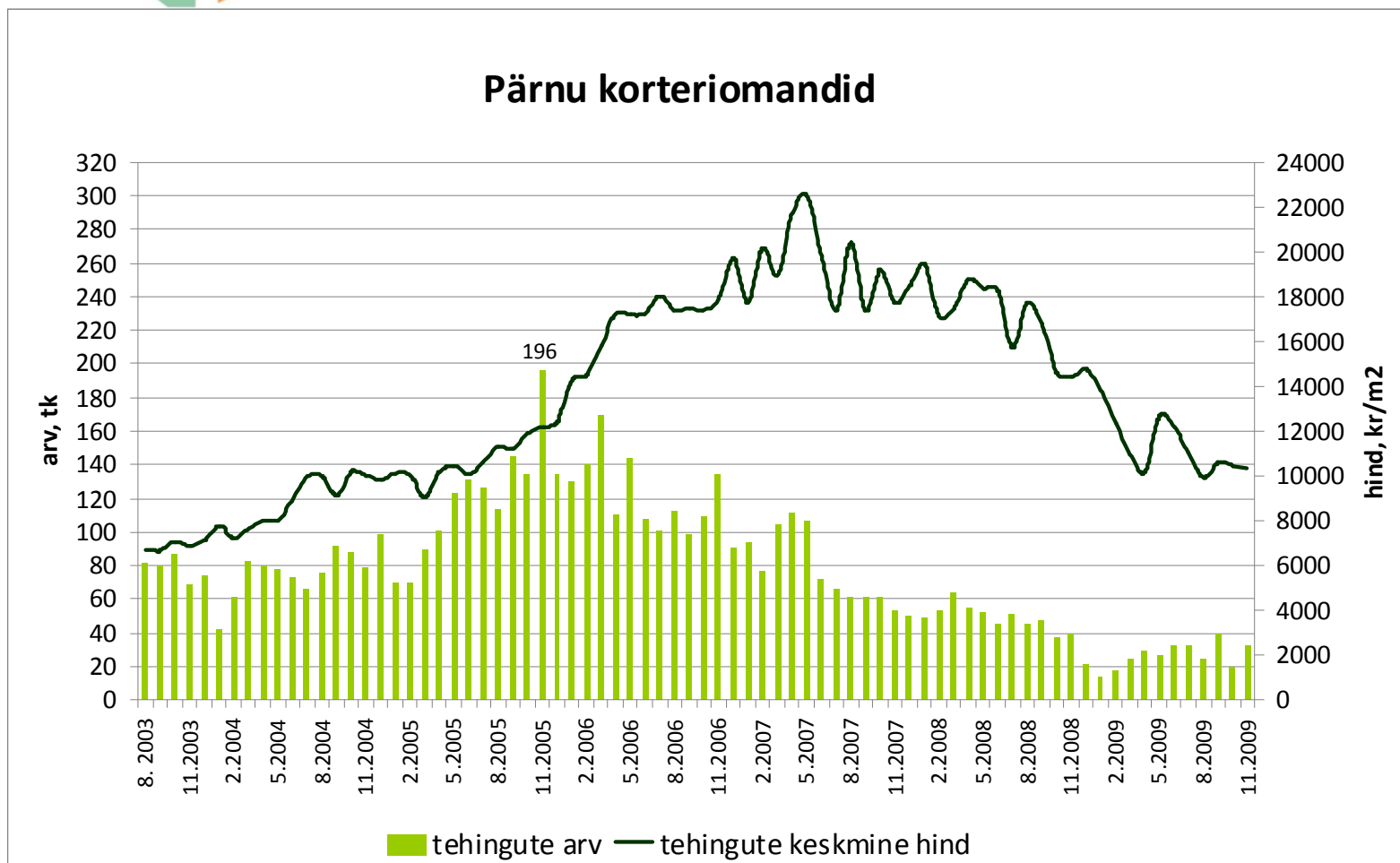
Allikas: Maa-amet

Tehinguhind on langenud hinnatipust (veebruar 2007.a.) 46% (november -10,7%)



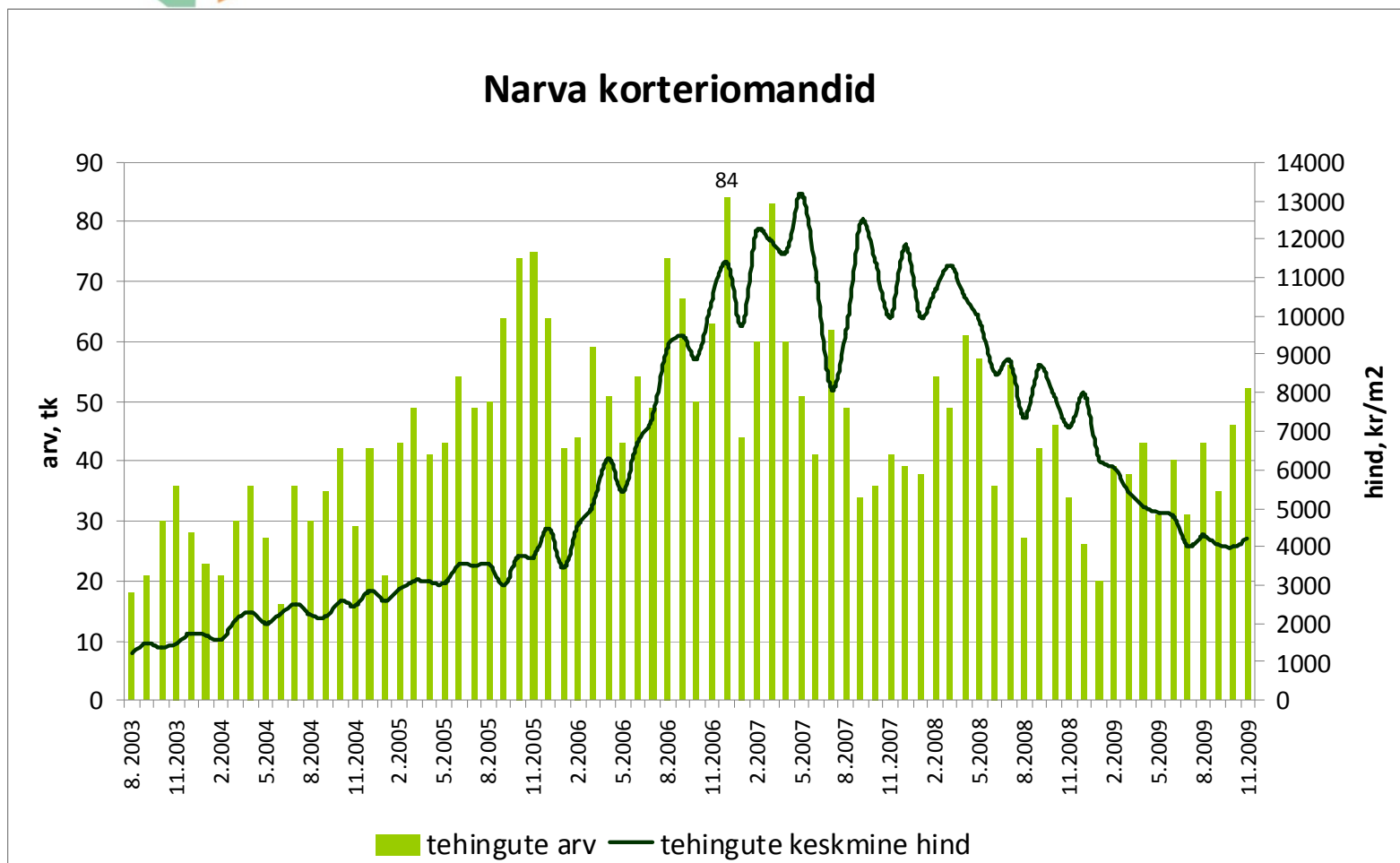
Allikas: Maa-amet

Tehinguhind on langenud hinnatipust (mai 2007.a.) 54% (november -0,8%)



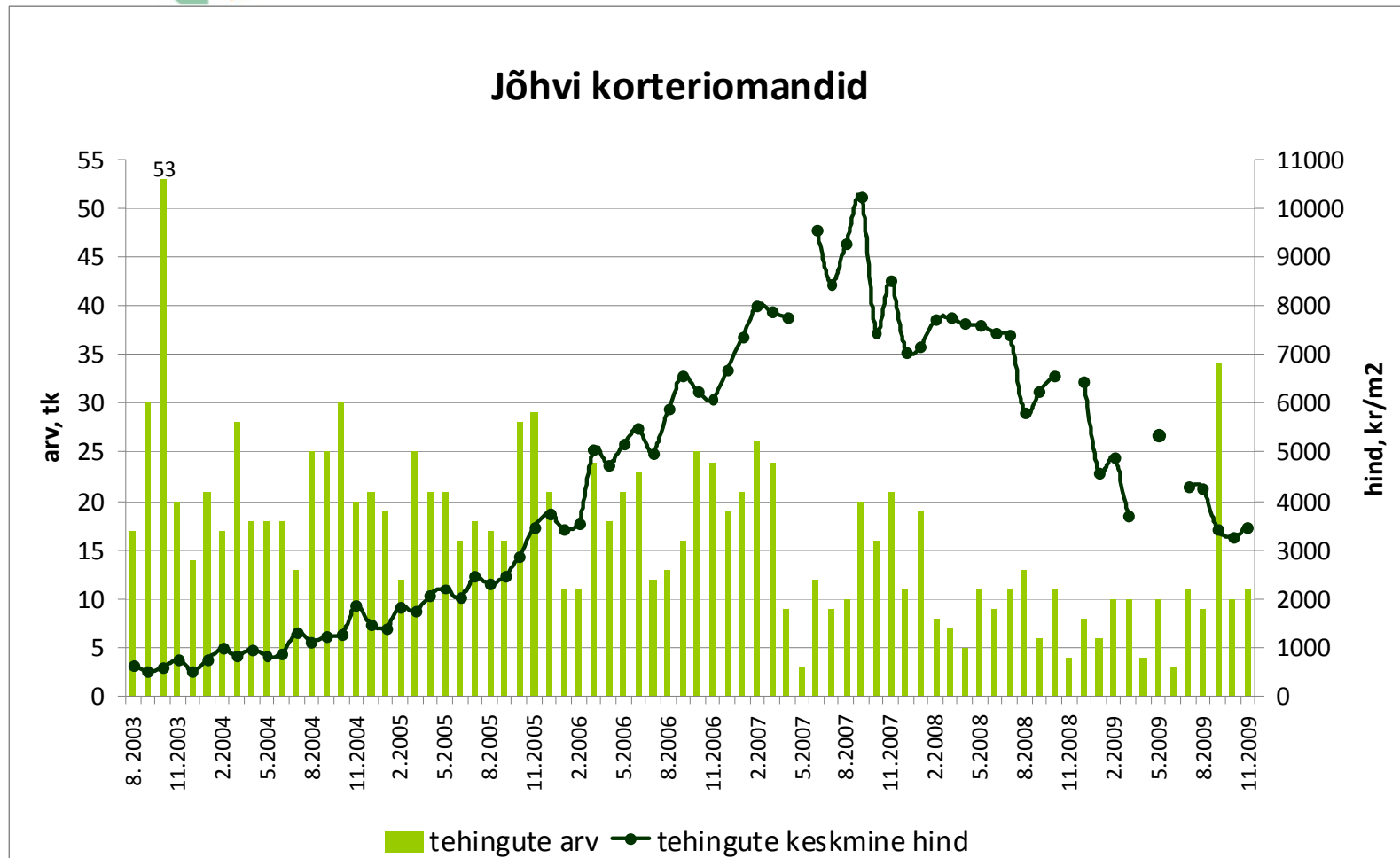
Allikas: Maa-amet

**Tehinguhind on langenud hinnatipust
(märts 2007.a.) 68 % (november +5,1%)**



Allikas: Maa-amet

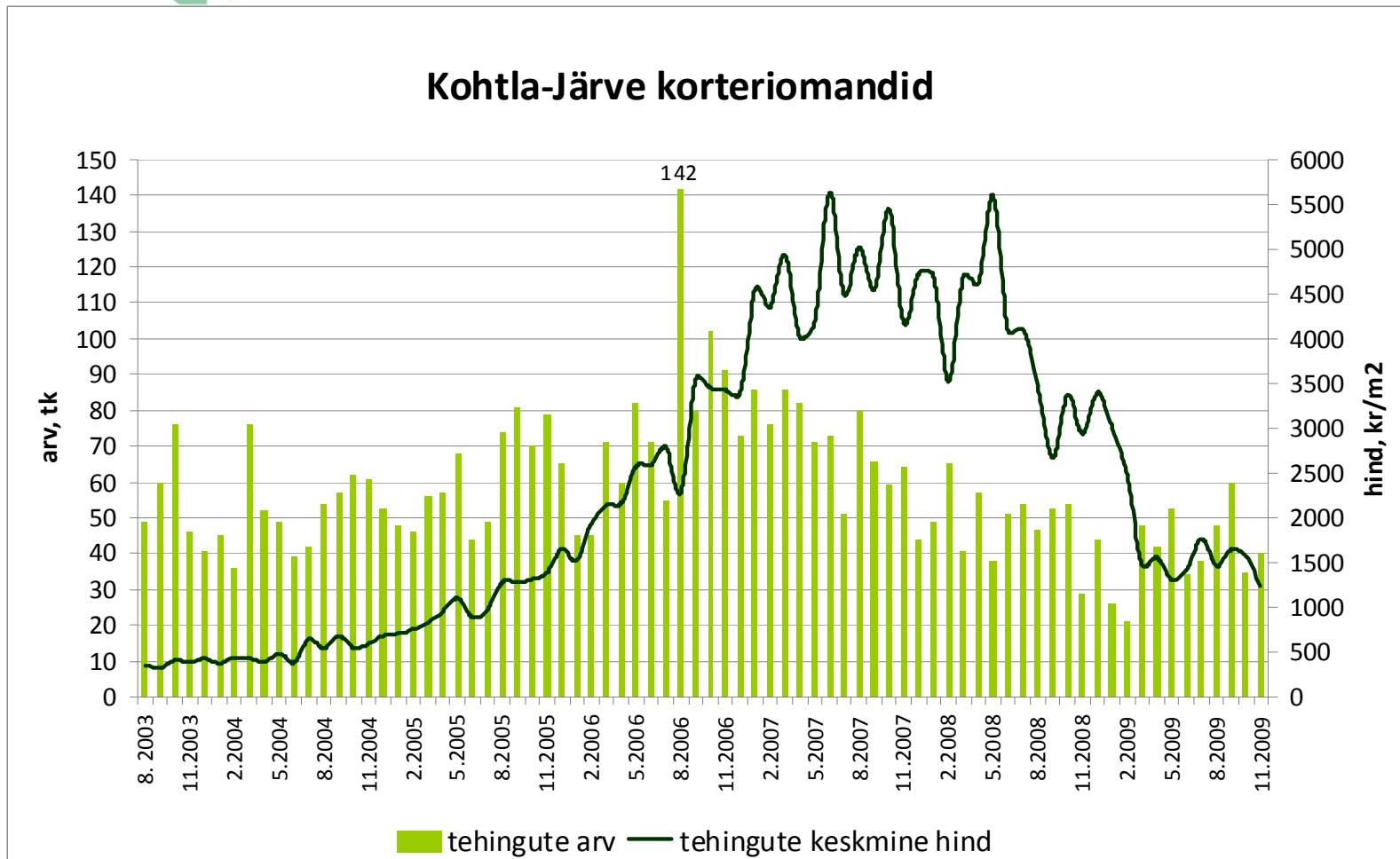
**Tehinguhind on langenud hinnatipust
(september 2007.a.) 66% (november +6,7%)**



Allikas: Maa-amet

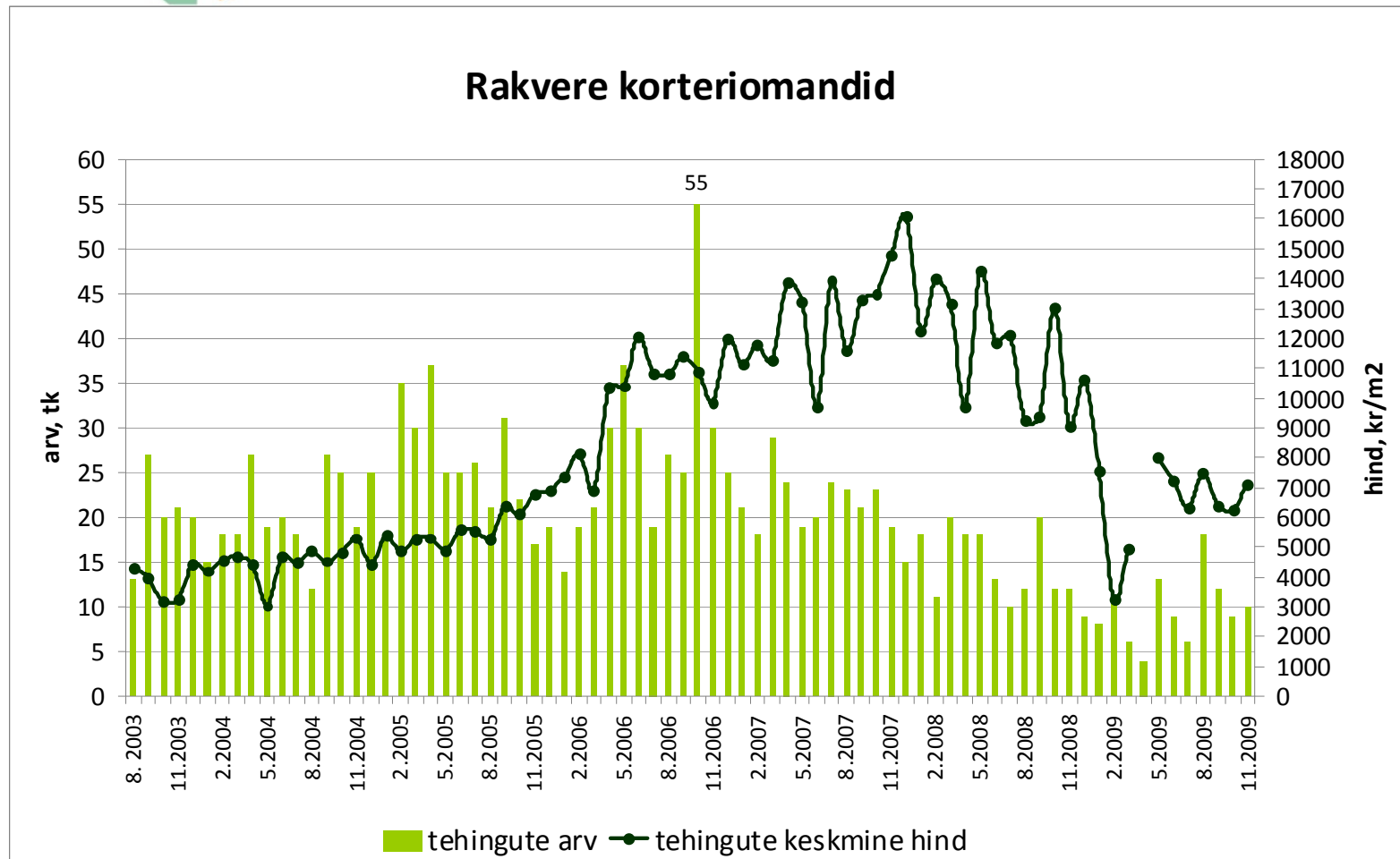
**Tehinguhind on langenud hinnatipust
(juuni 2007.a.) 78% (november -20,8%)**

Kohtla-Järve korteriomandid



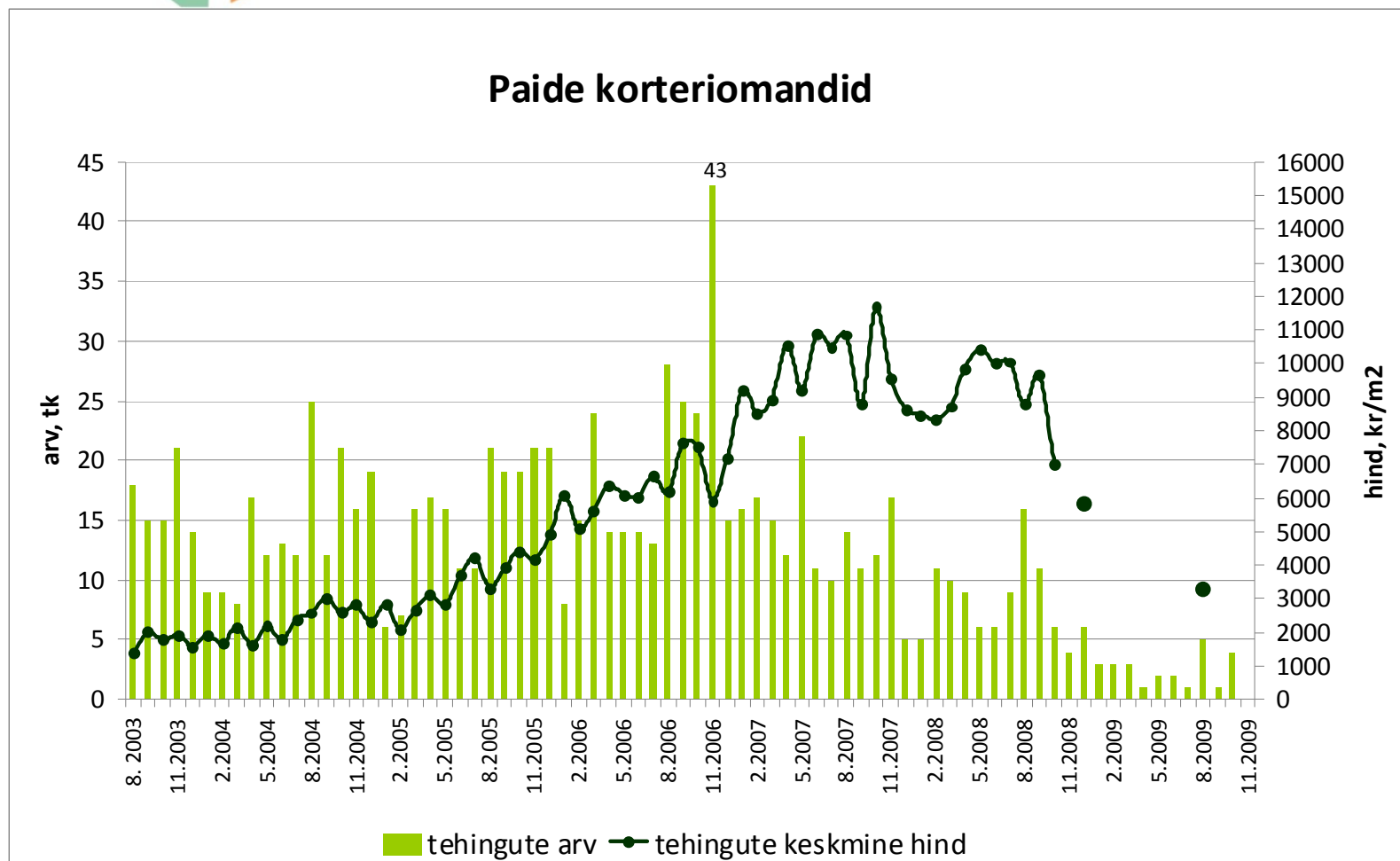
Allikas: Maa-amet

Tehinguhind on langenud hinnatipust (detsember 2007.a.) 56% (november +13,3%)



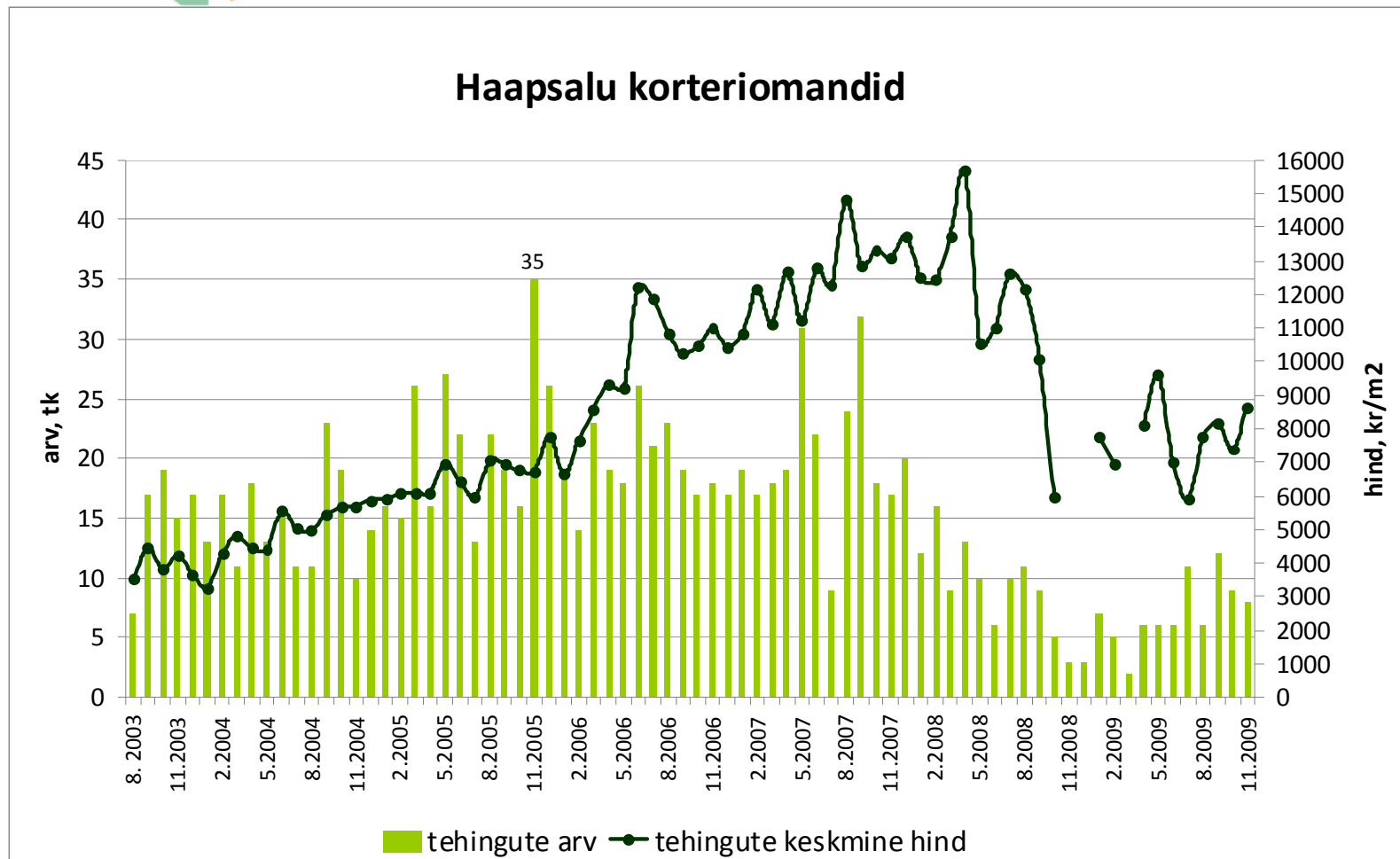
Allikas: Maa-amet

Tehinguhind on langenud hinnatipust (oktoober 2007.a.) ca 72%



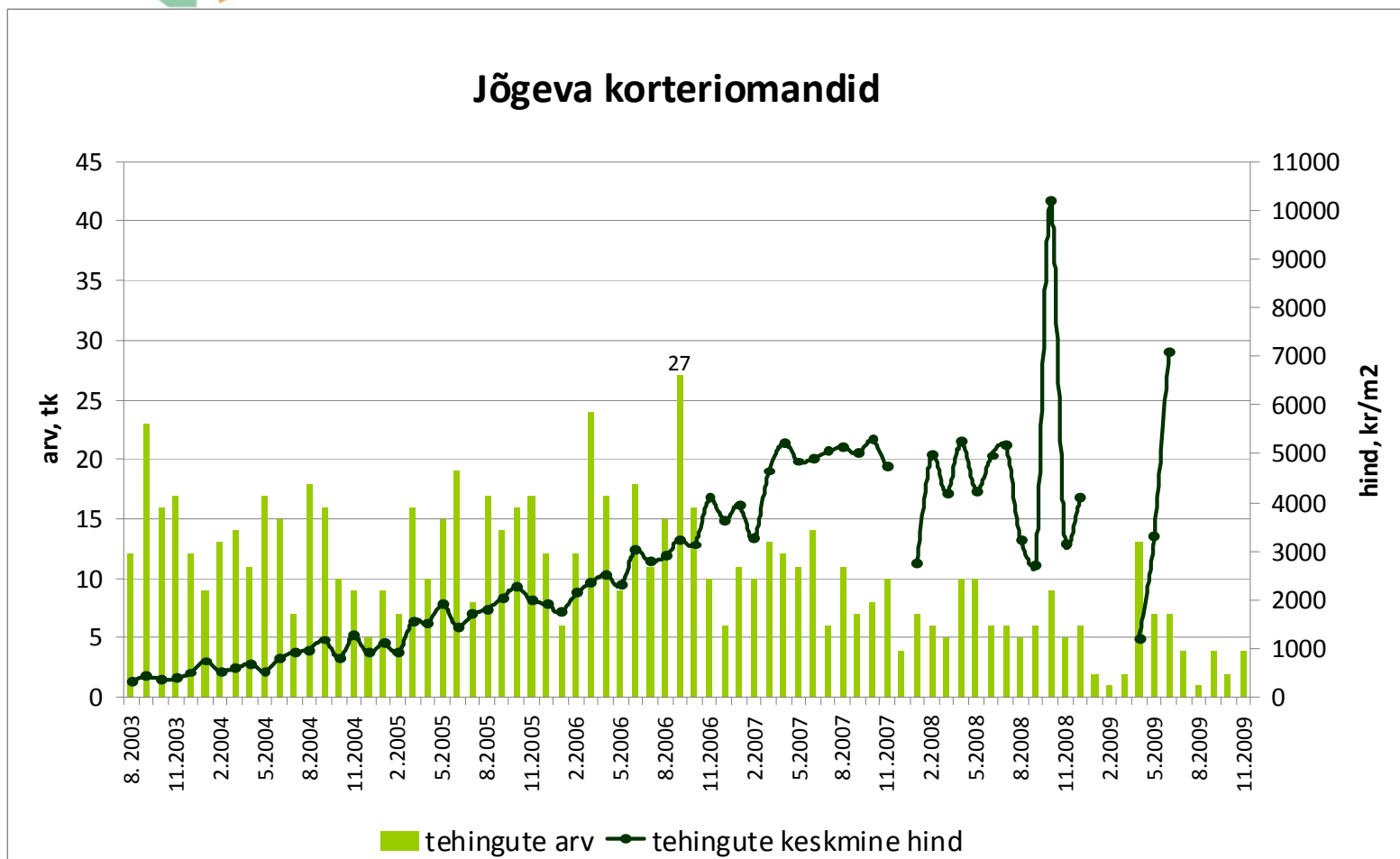
Allikas: Maa-amet

Tehinguhind on langenud hinnatipust (aprill 2008.a.) 45% (november +16,6%)



Allikas: Maa-amet

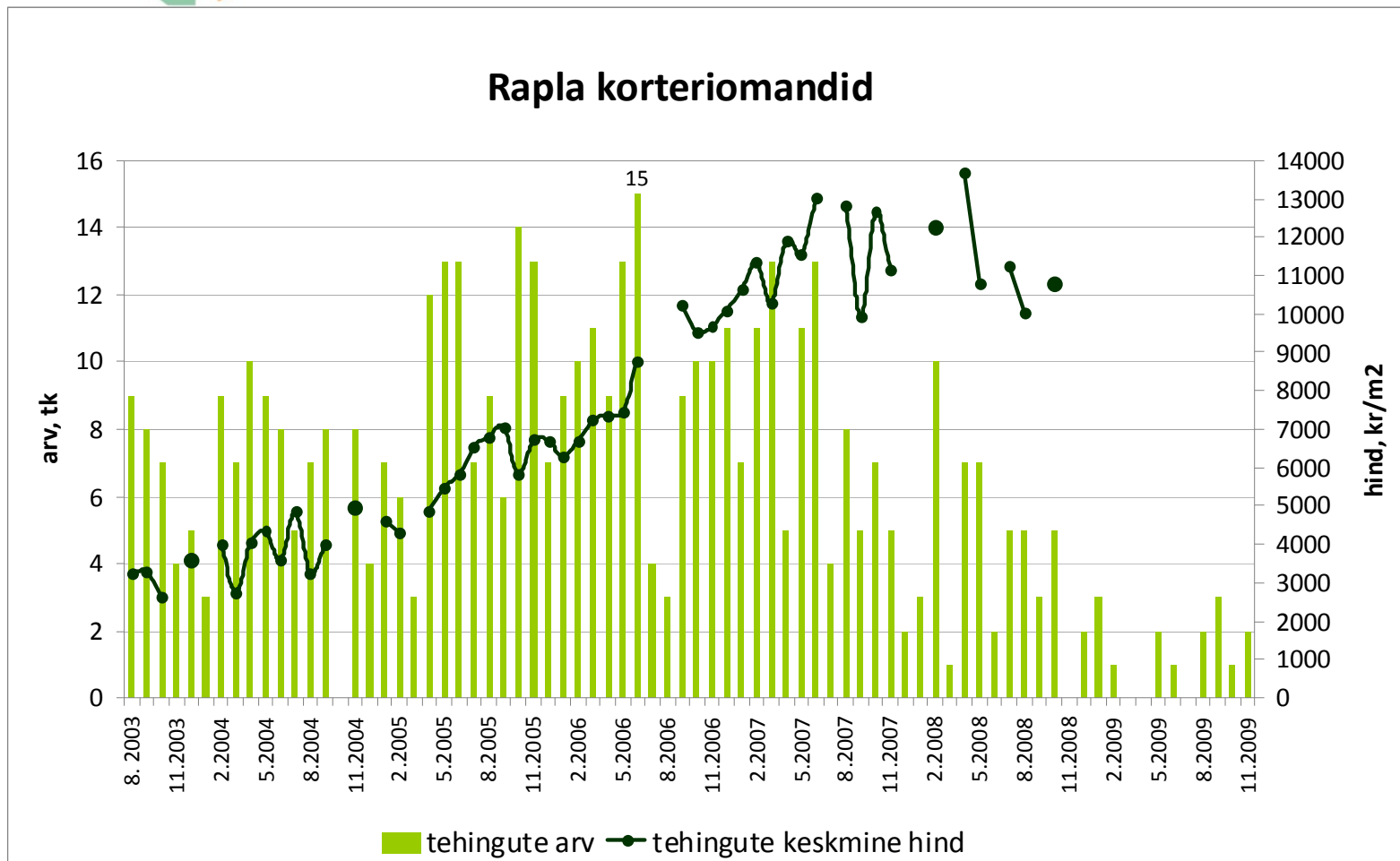
Tehinguhind on langenud hinnatipust (oktoober 2008.a.) ca 31%*



Allikas: Maa-amet

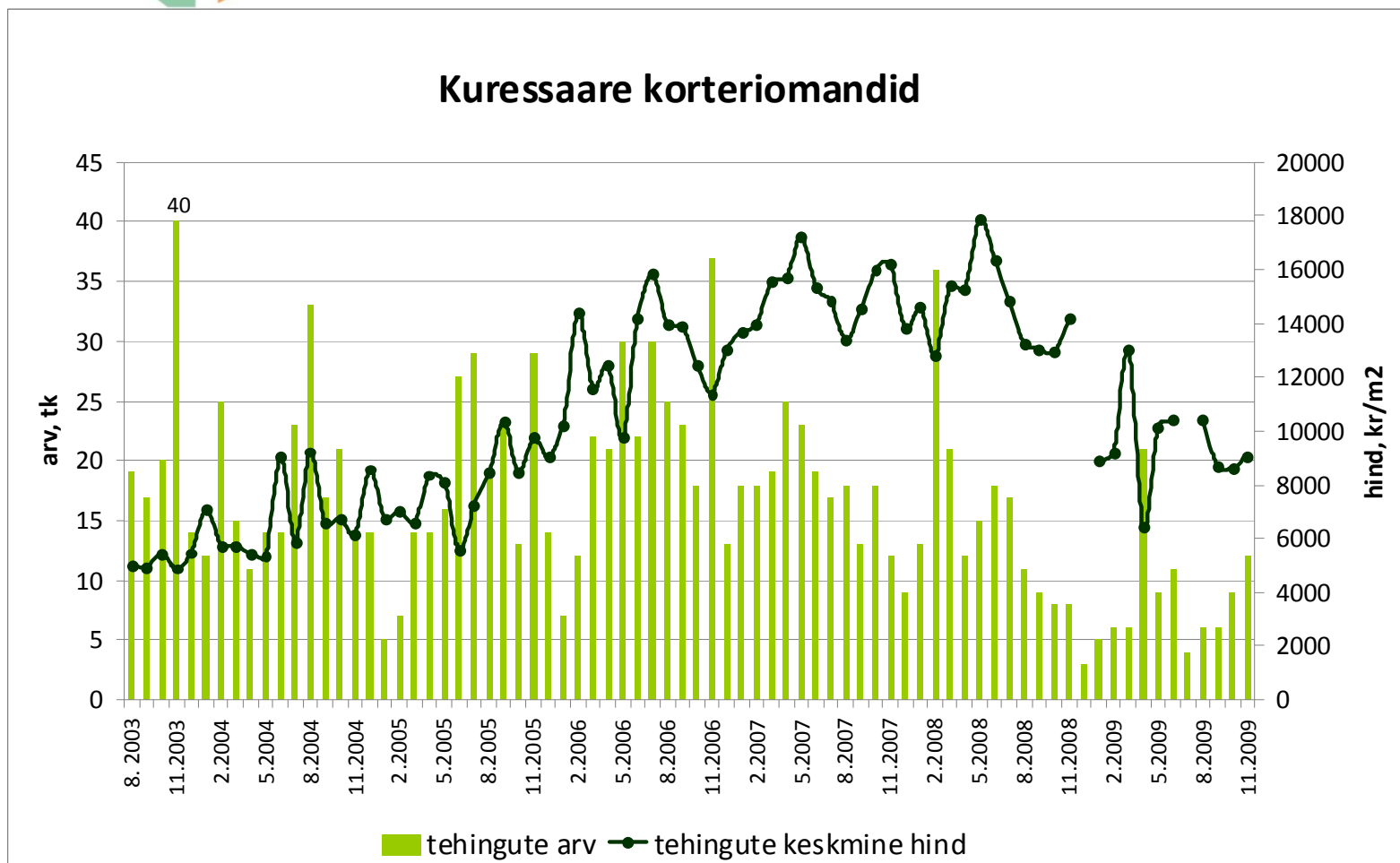
* 2008-2009 järsud hinnatõusud on tingitud vabaturuvälistest tehingutest

Tehinguhind on langenud hinnatipust (aprill 2008.a.) ca 21%



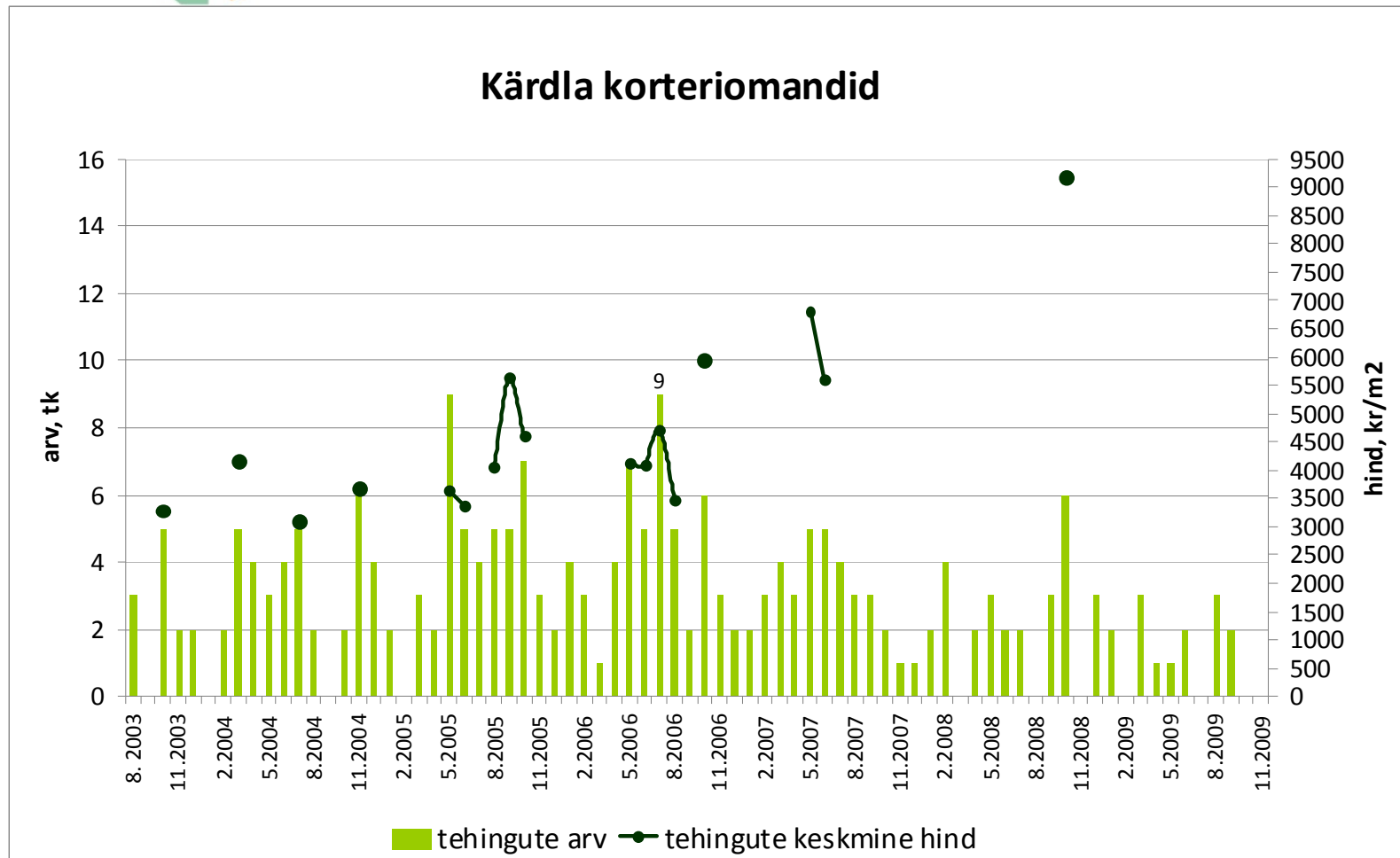
Allikas: Maa-amet

Tehinguhind on langenud hinnatipust (mai 2008.a.) 49% (november +4,6%)



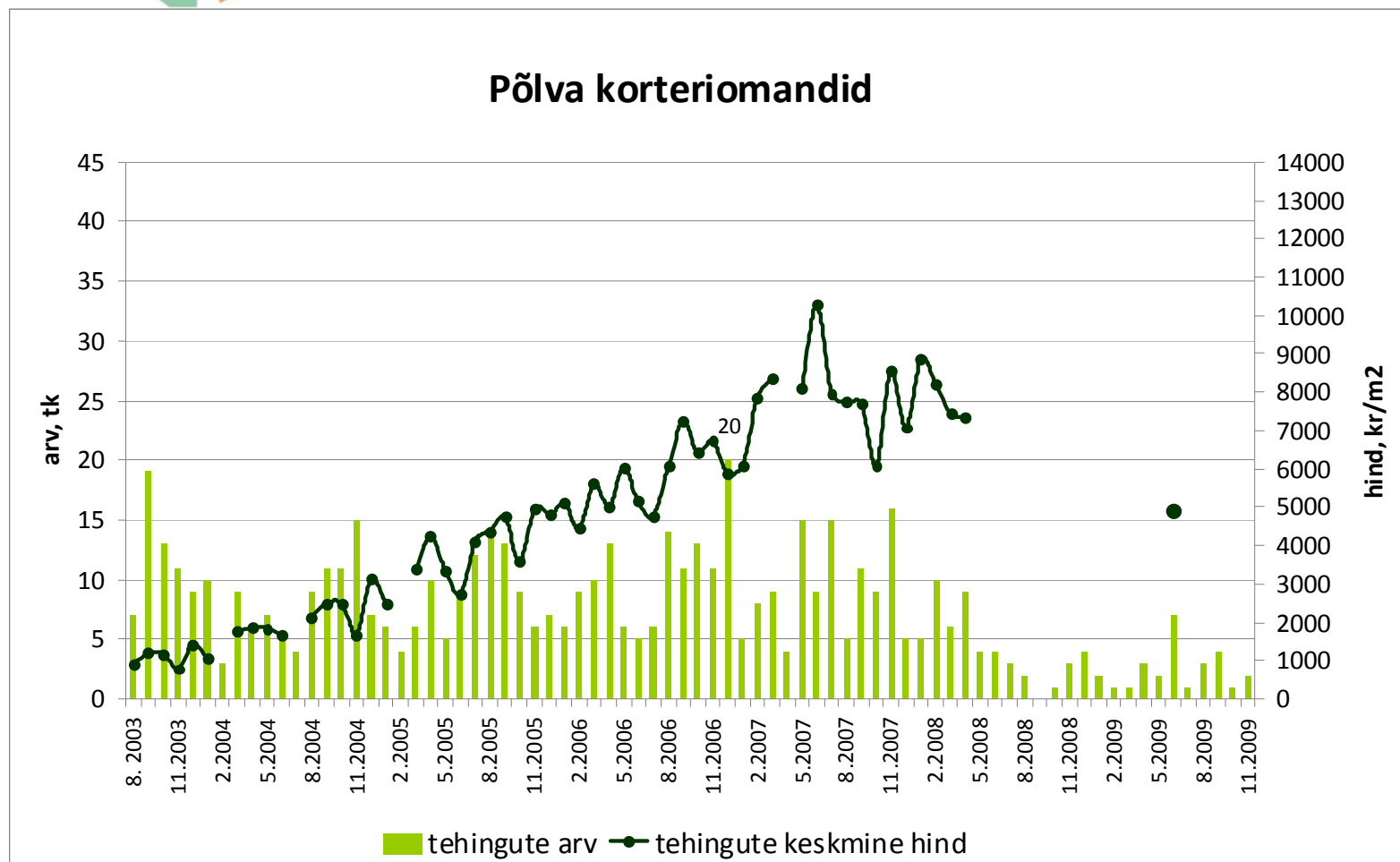
Allikas: Maa-amet

Tehinguhind on langenud hinnatipust (oktoober 2008.a.) 100%



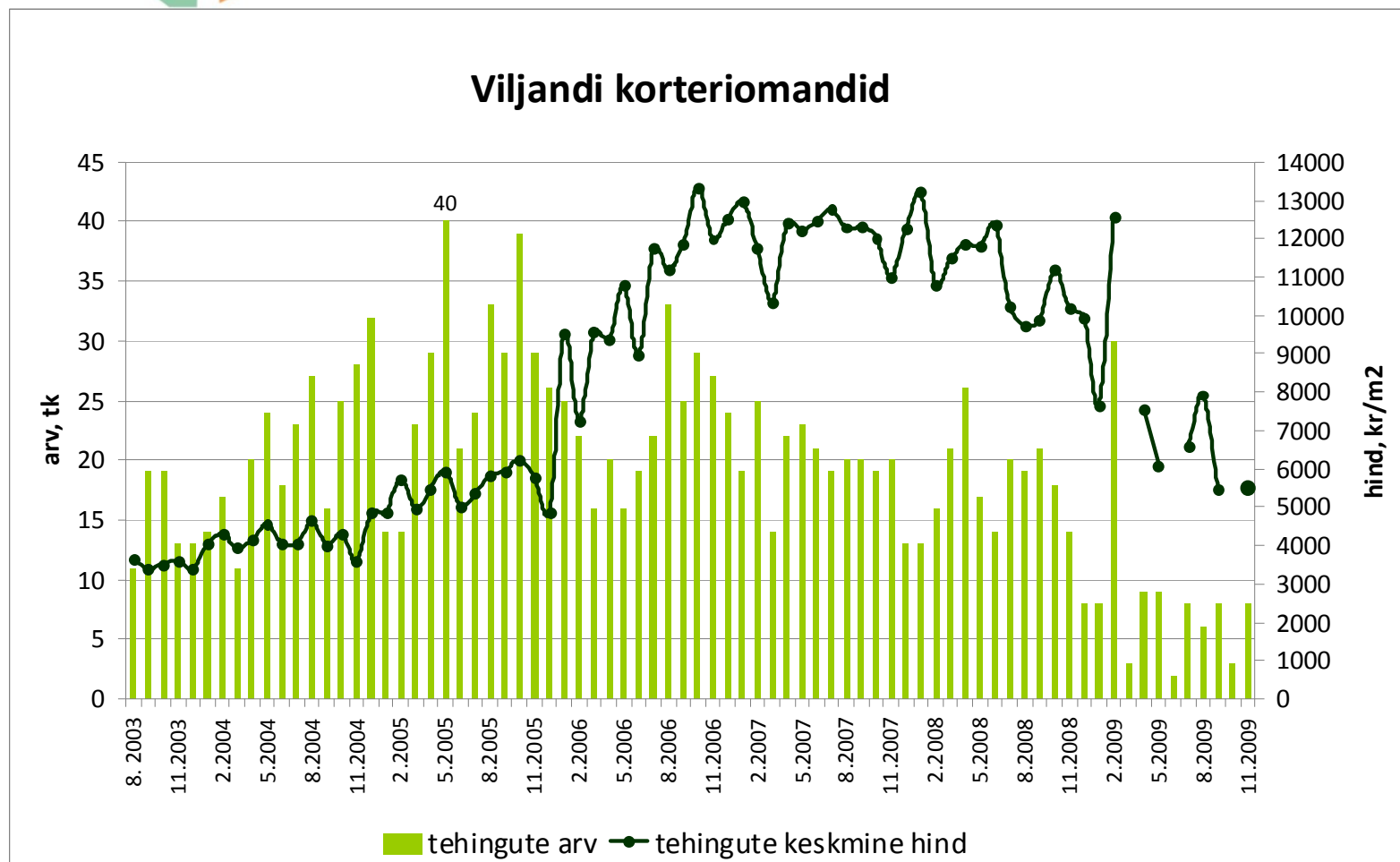
Allikas: Maa-amet

Tehinguhind on langenud hinnatipust (juuni 2007.a.) ca 52%



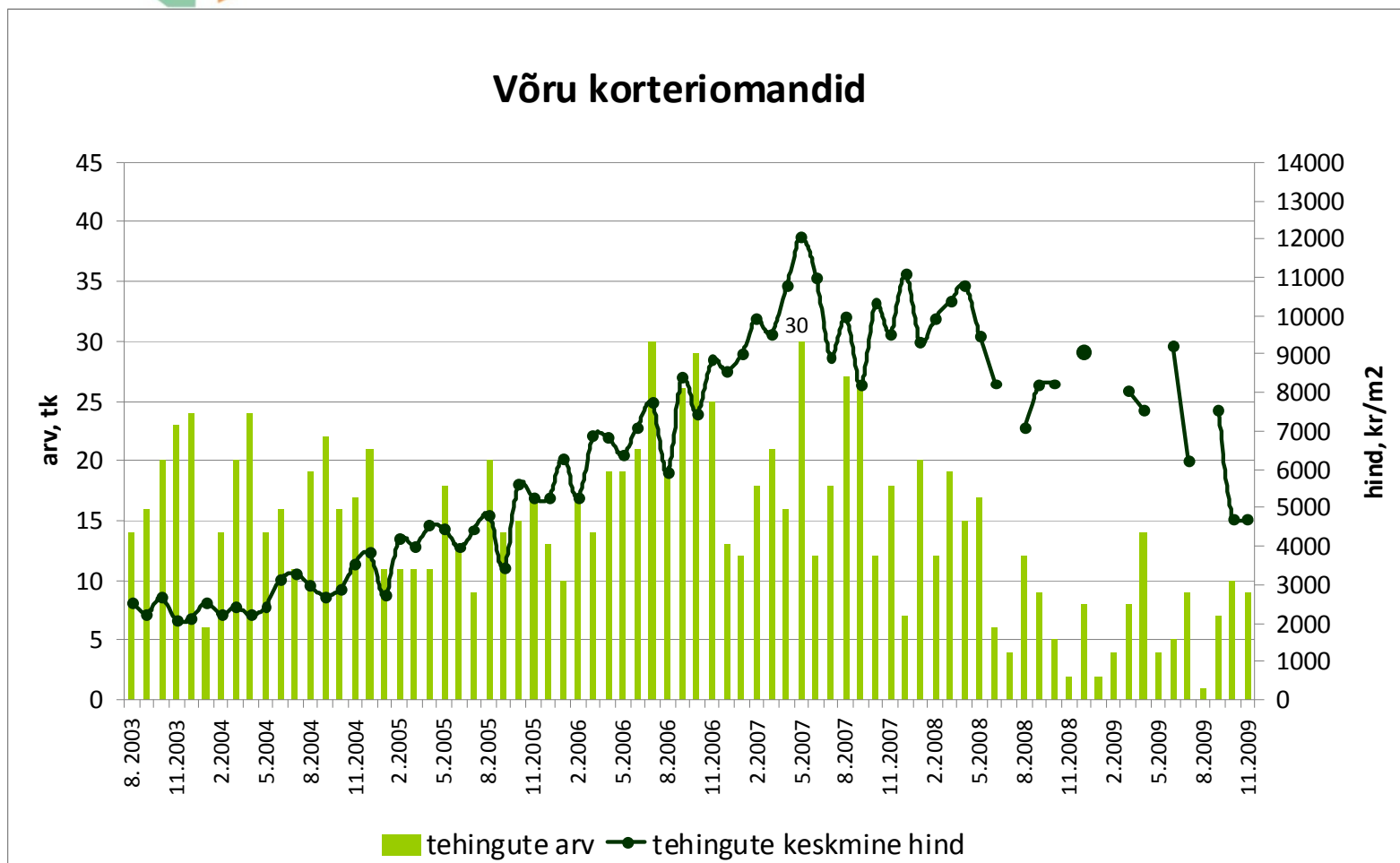
Allikas: Maa-amet

Tehinguhind on langenud hinnatipust (jaanuar 2008.a.) 58%



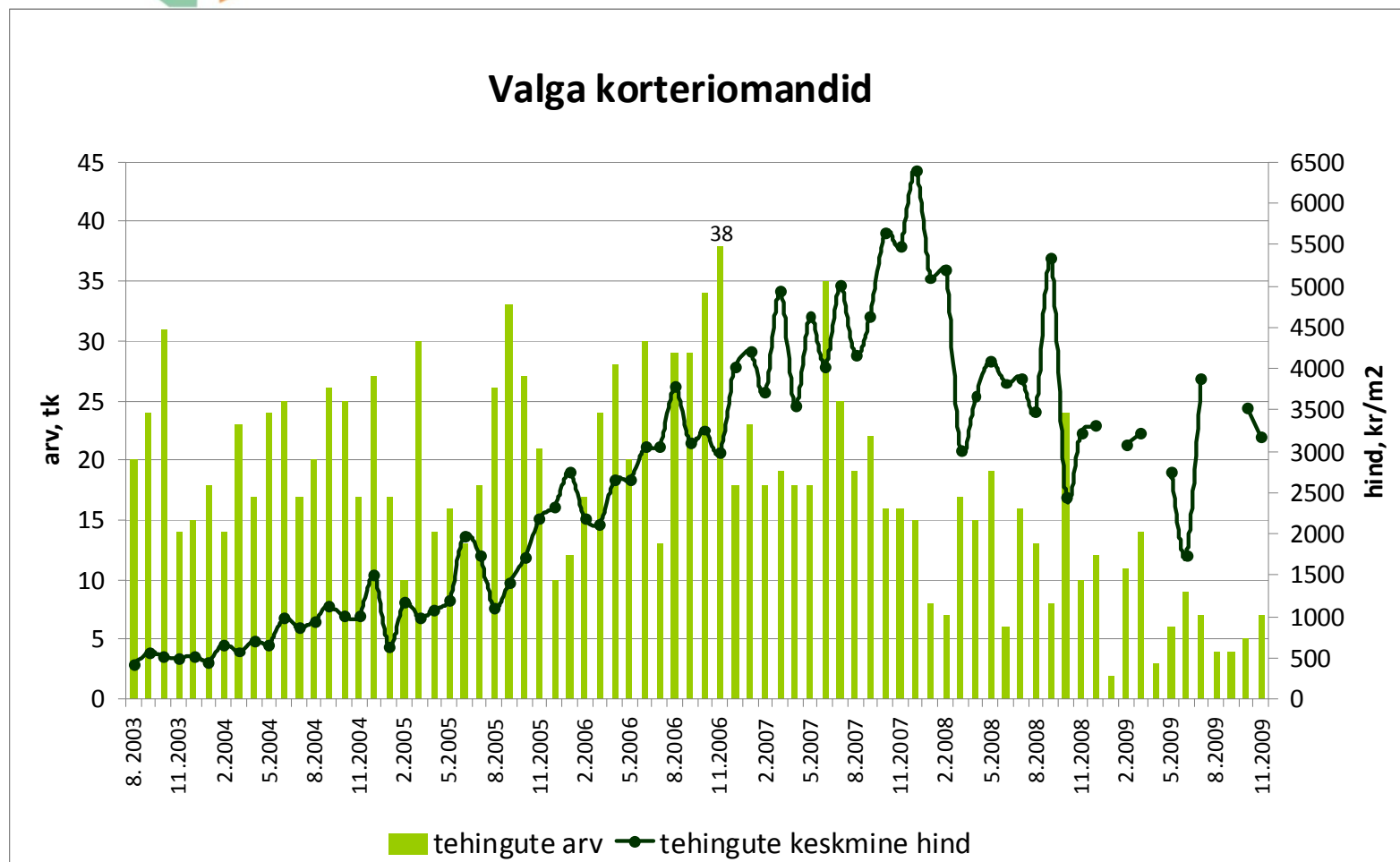
Allikas: Maa-amet

Tehinguhind on langenud hinnatipust (mai 2007.a.) 61% (november -0,7%)



Allikas: Maa-amet

Tehinguhind on langenud hinnatipust (detsember 2007.a.) 50% (november -18,3%)



Allikas: Maa-amet