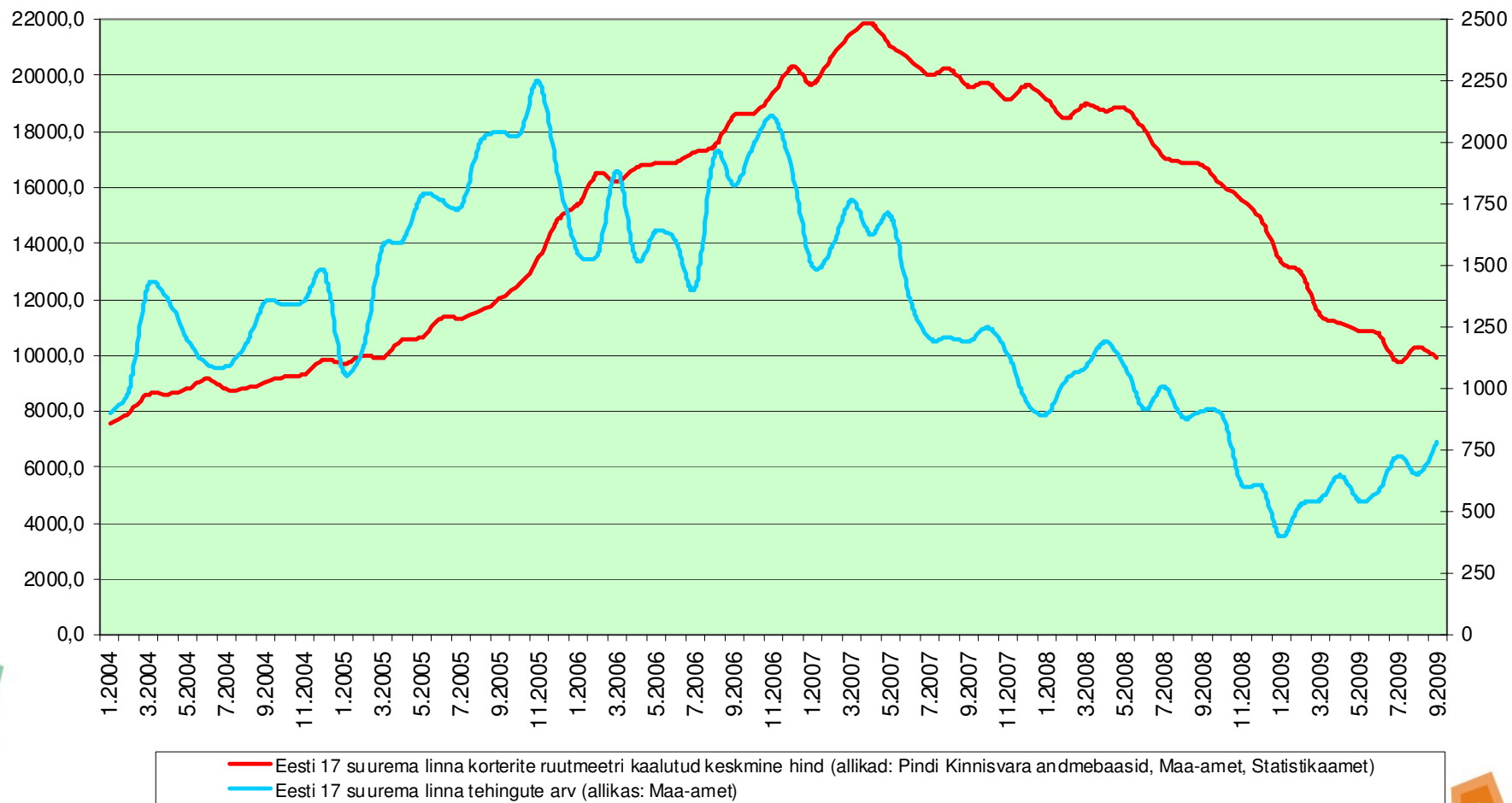


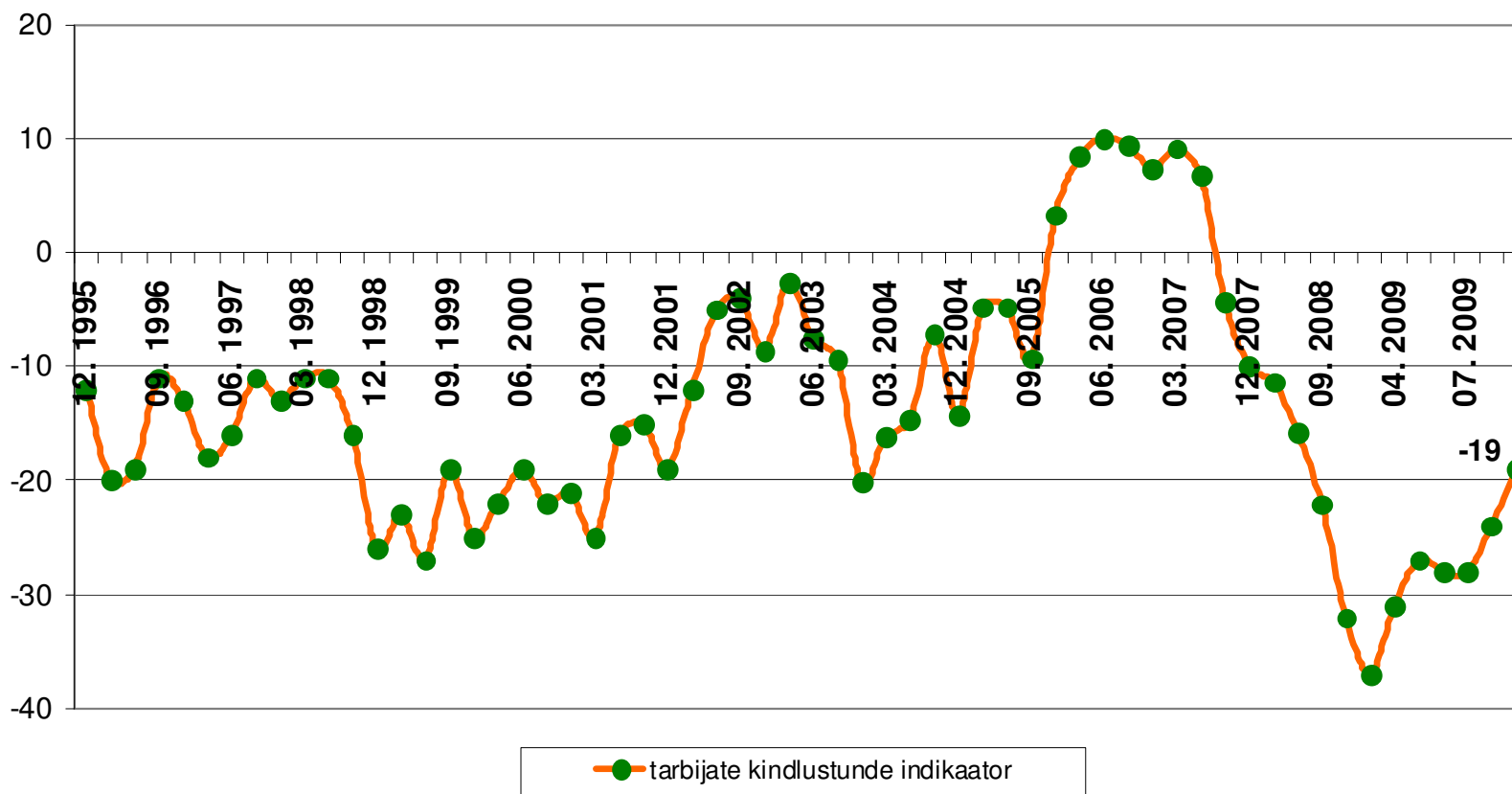


KINNISVARATURU AKTIIVSUS JA REGIONAALSED ERIPÄRAD

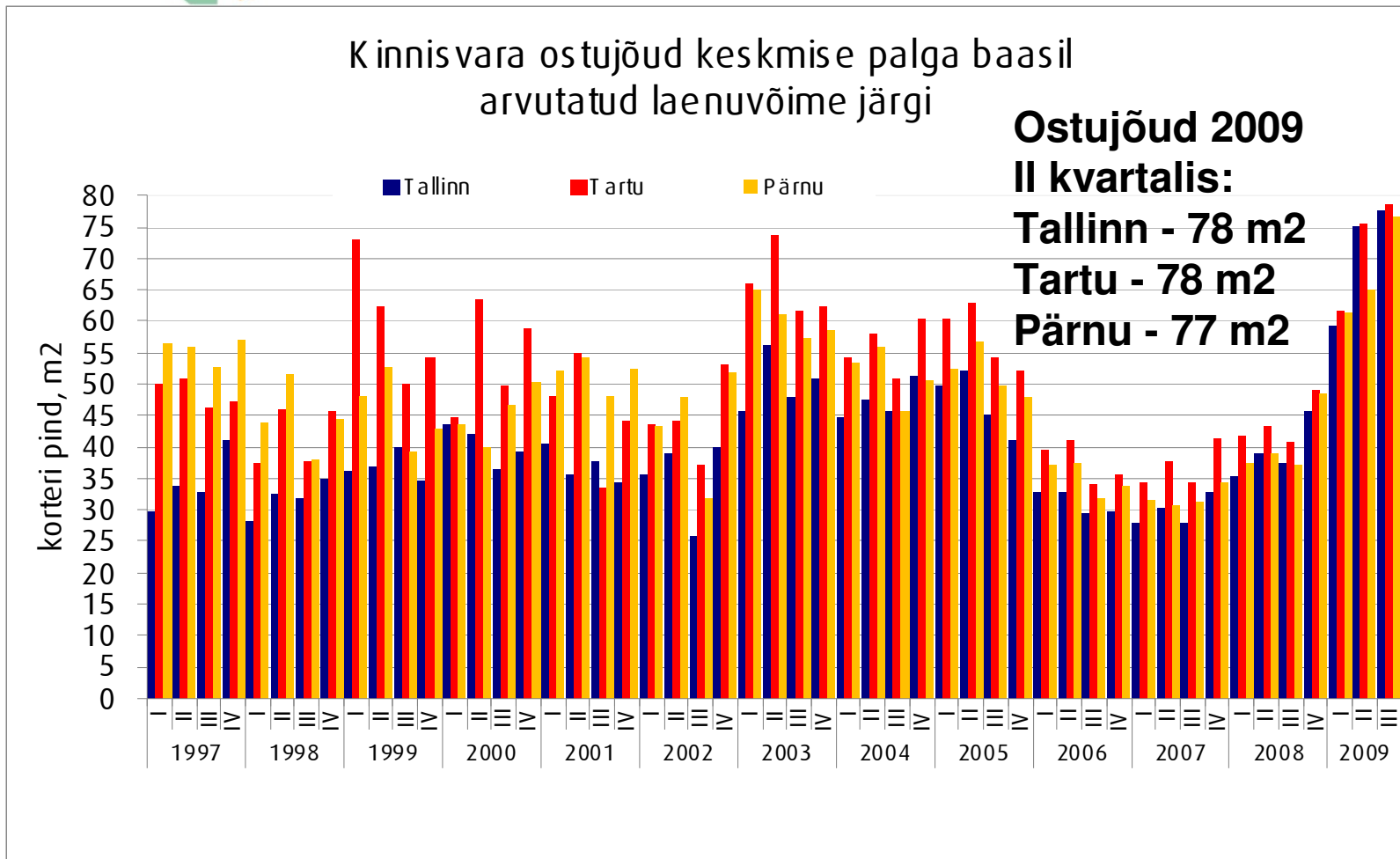
PINDI HINNAINDEKS



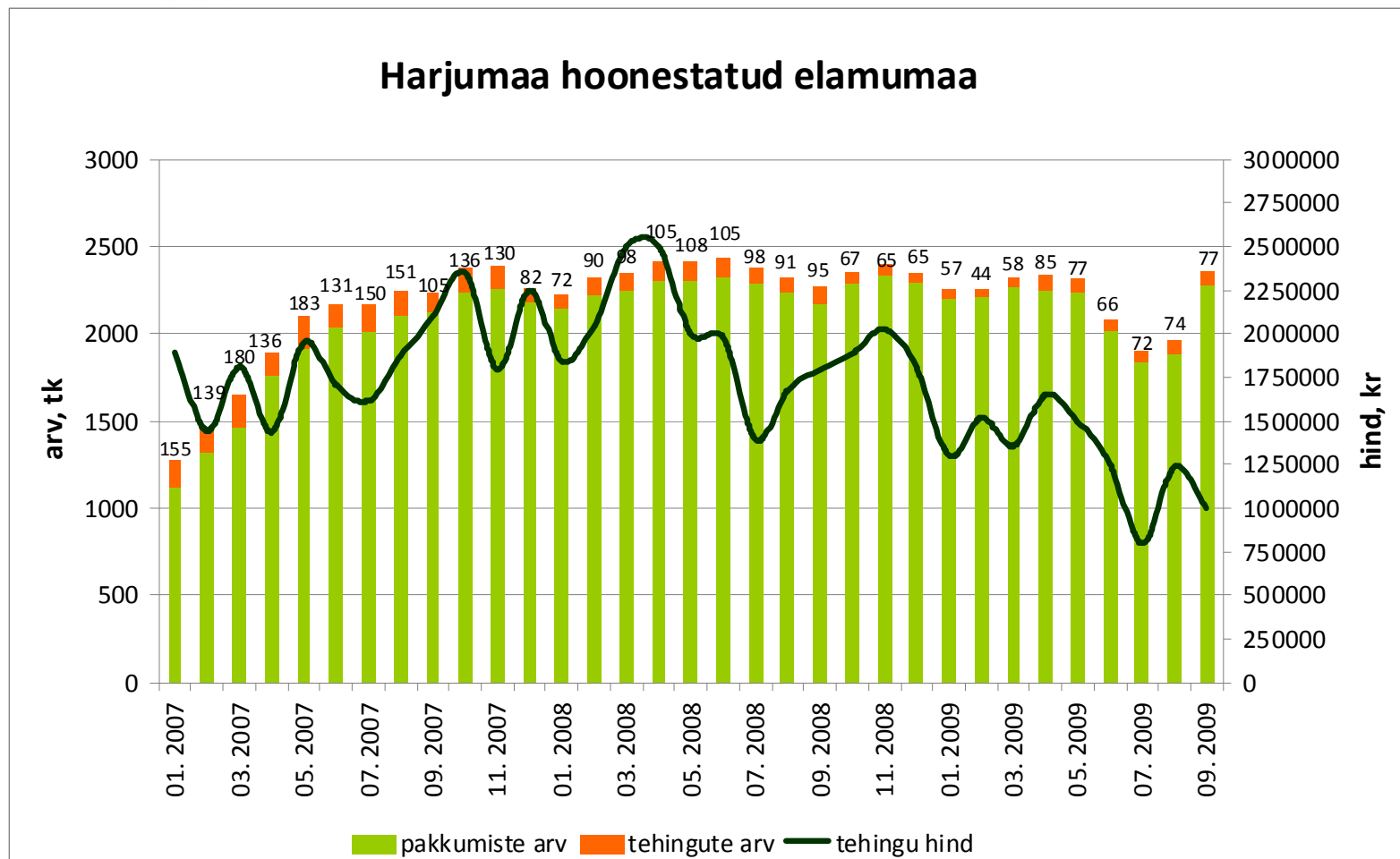
Tarbijate kindlustunde indikaator



Kinnisvara ostujõud keskmise palga baasil arvatatud laenuvõime järgi:

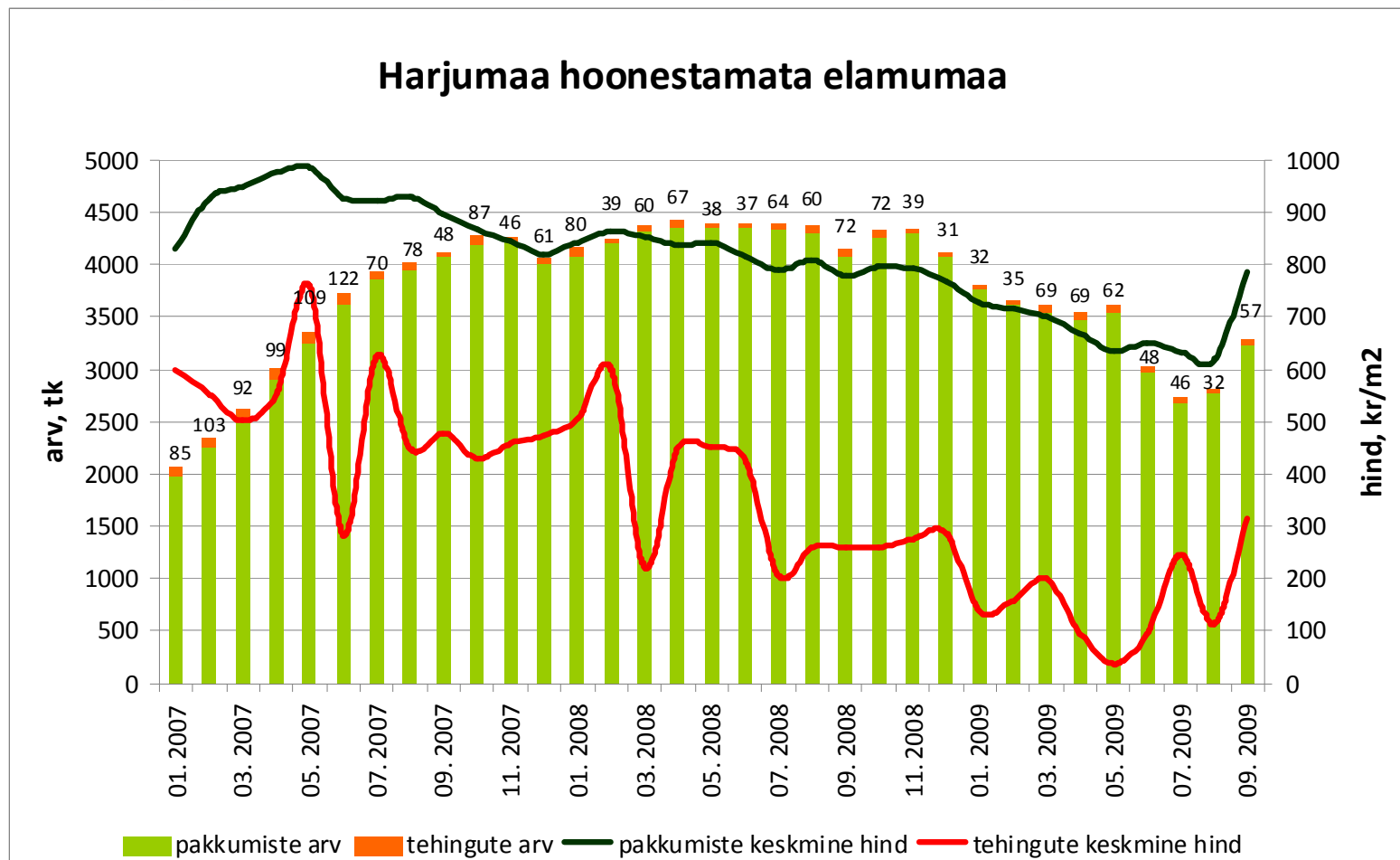


Tehingute arv on langenud 58%,
tehinguhind 60%



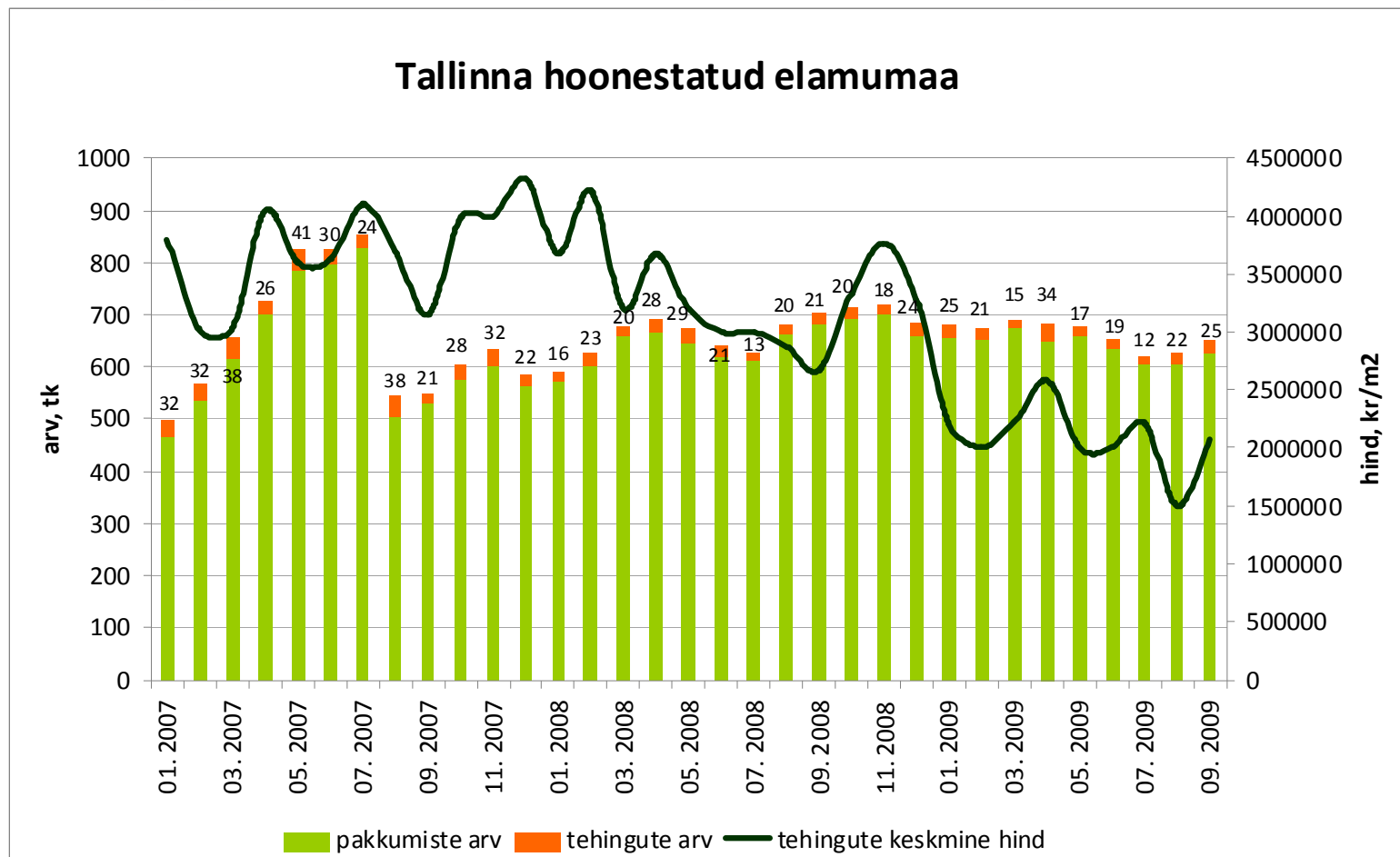
Allikad: Maa-amet, City24

Tehingute arv on langenud 53%,
tehinguhind 58%



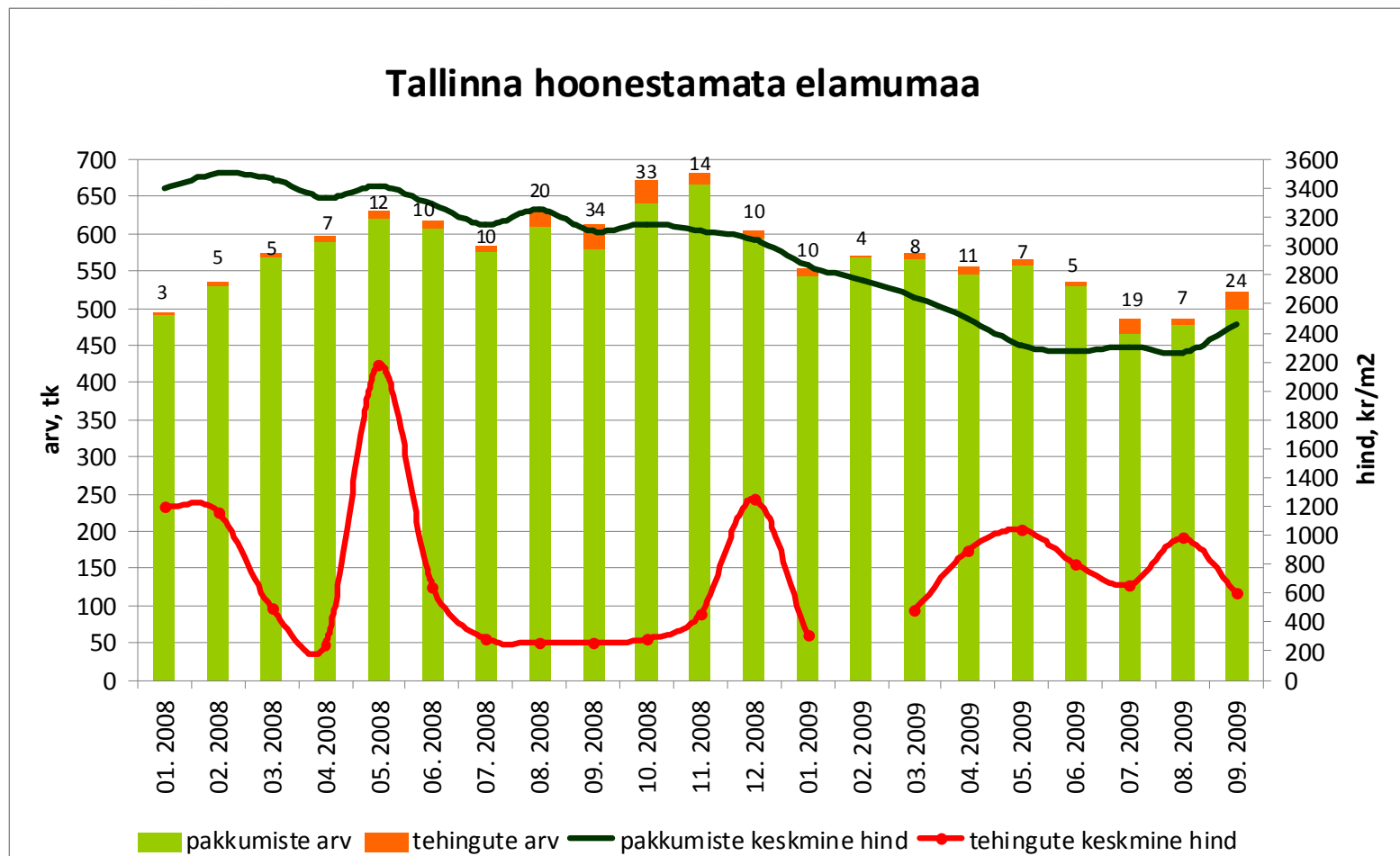
Allikas: Maa-amet, City24

Tehingute arv on 2006.a. märtsist
langenud 66%, tehinguhind
2007.a. dets-st 52%



Allikad: Maa-amet, City24

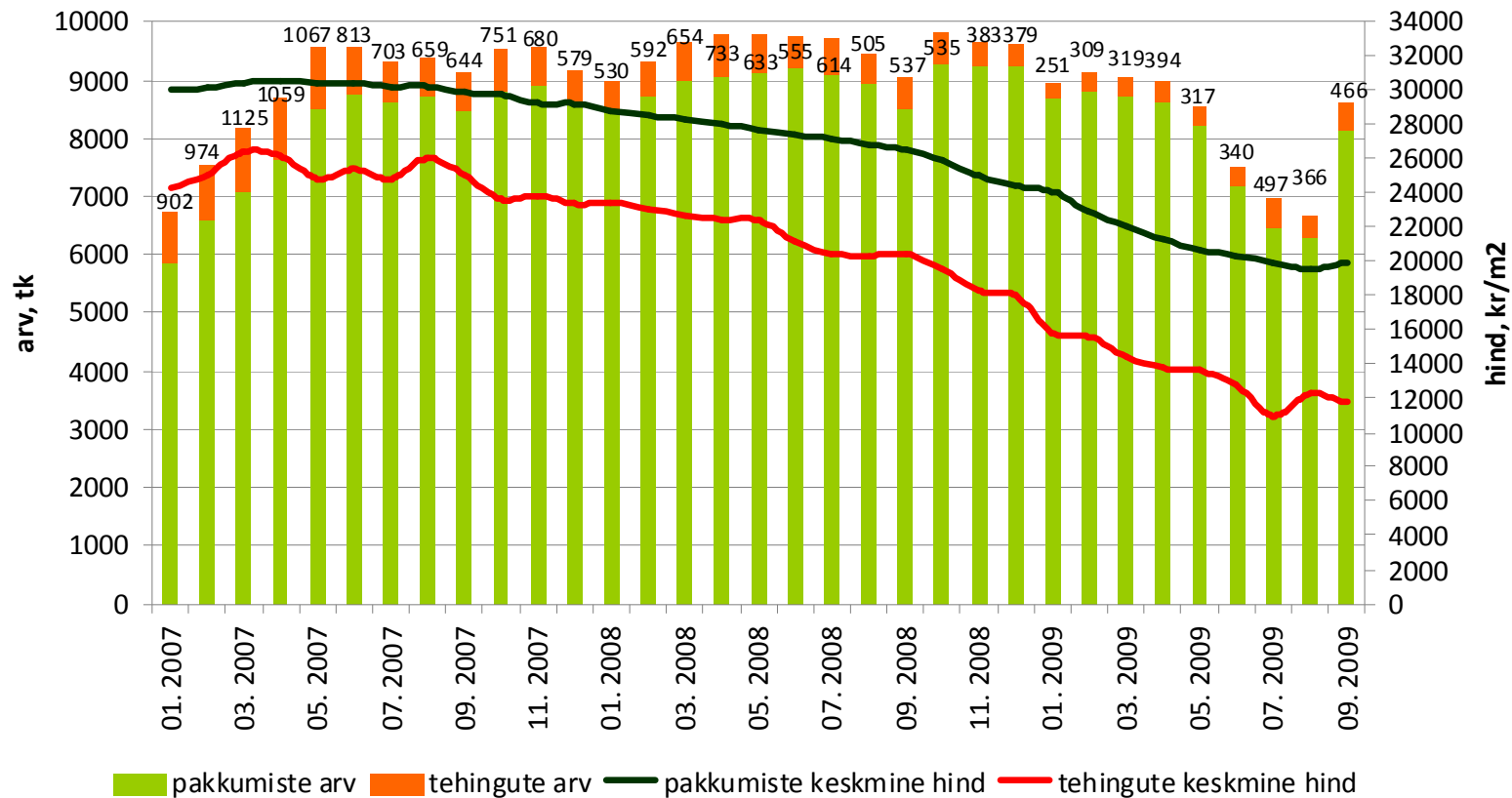
Tehingute arv on 2006.a. maist langenu-
nud 11%, tehinguhind 2007.a.
juunist 78%



Allikad: Maa-amet, City24

Tehingute arv on langenud 59%,
tehinguhind 56% (september -4%)

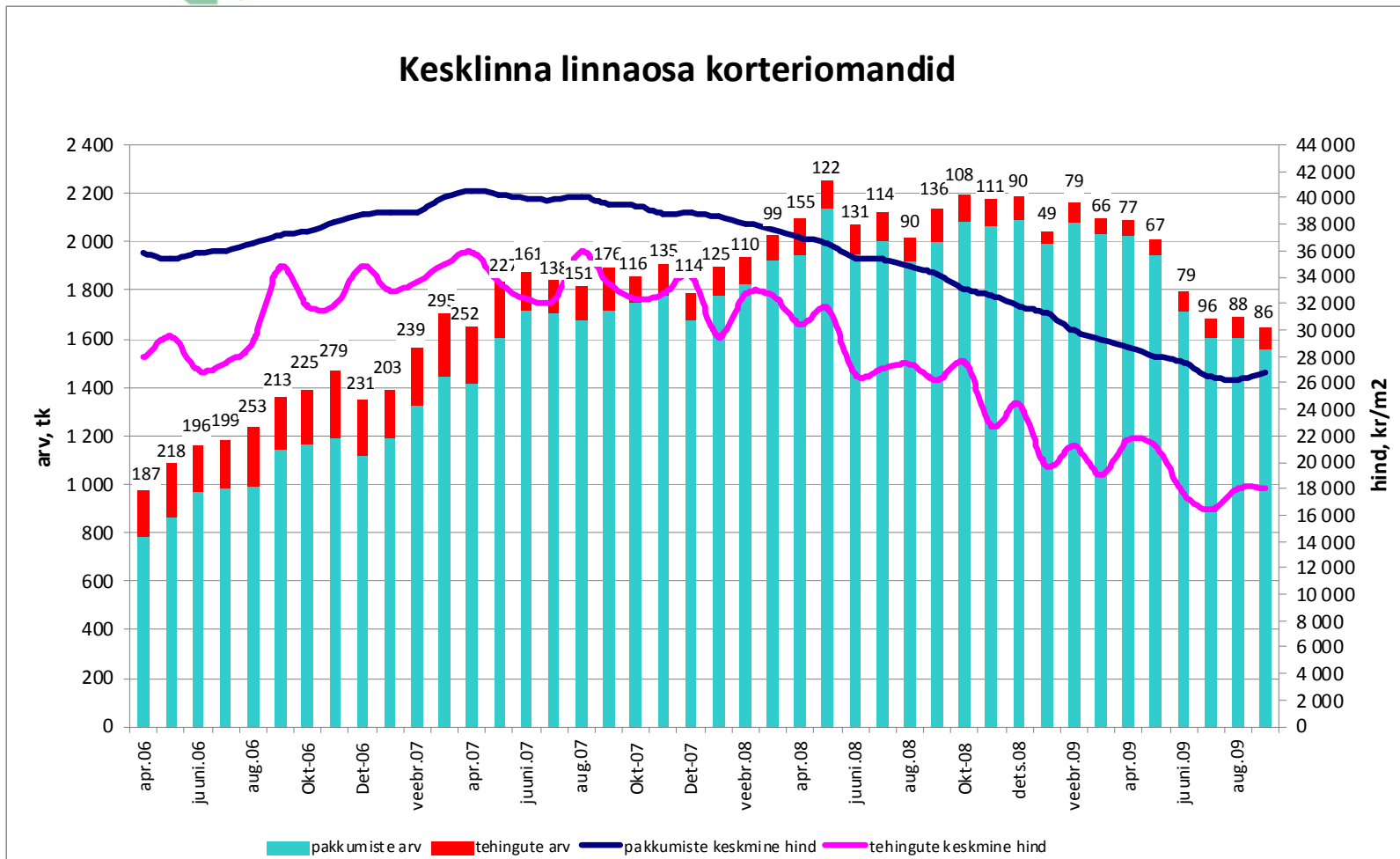
Tallinna korteriomandid



Allikad: Maa-amet, City24

Tehingute arv on langenud 71%,
tehinguhind 50% (september 8%)

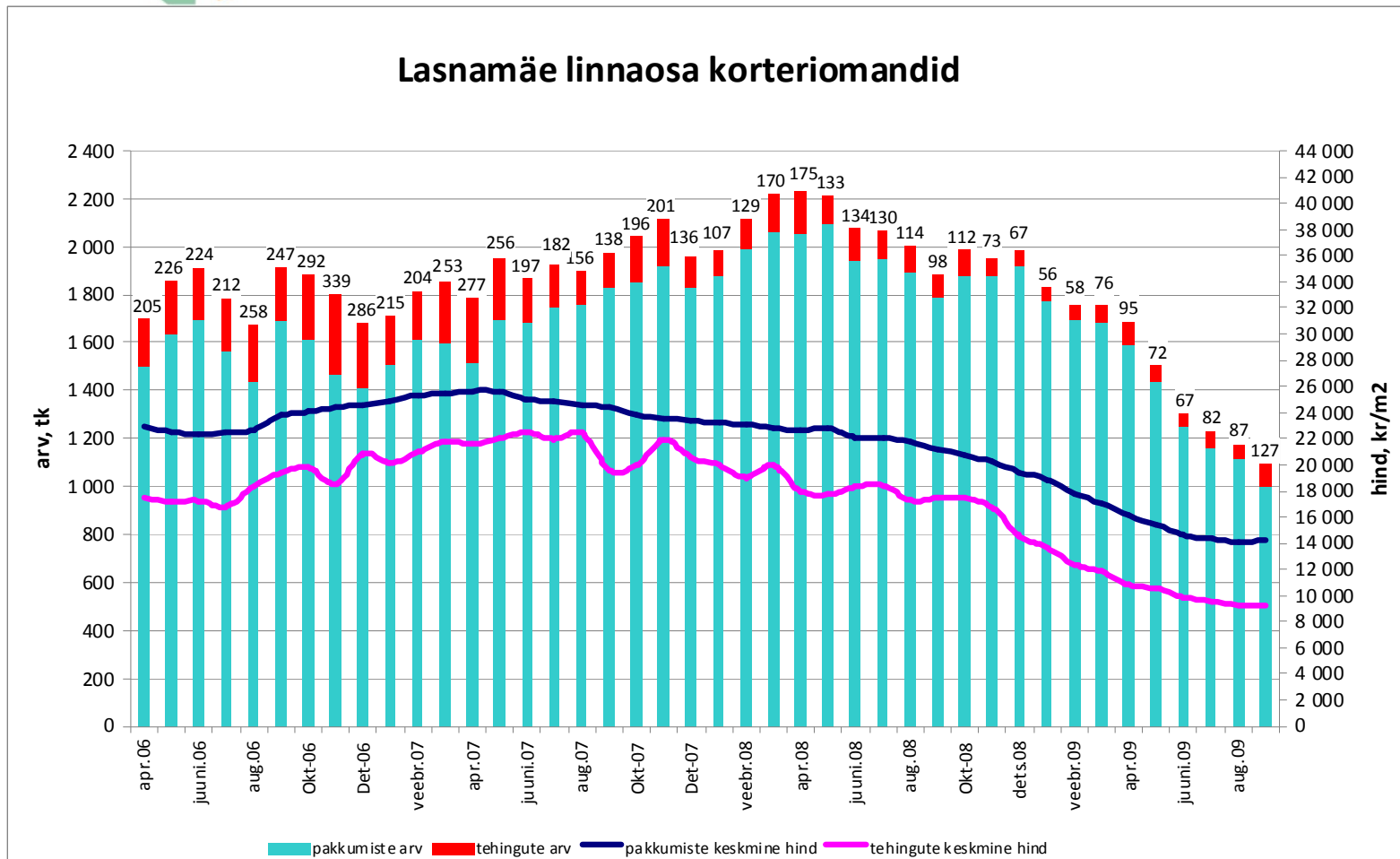
Kesklinna linnaosa korteriomandid



Allikad: Maa-amet, City24

Tehingute arv on langenud 63%,
tehinguhind 59% (september 0,2%)

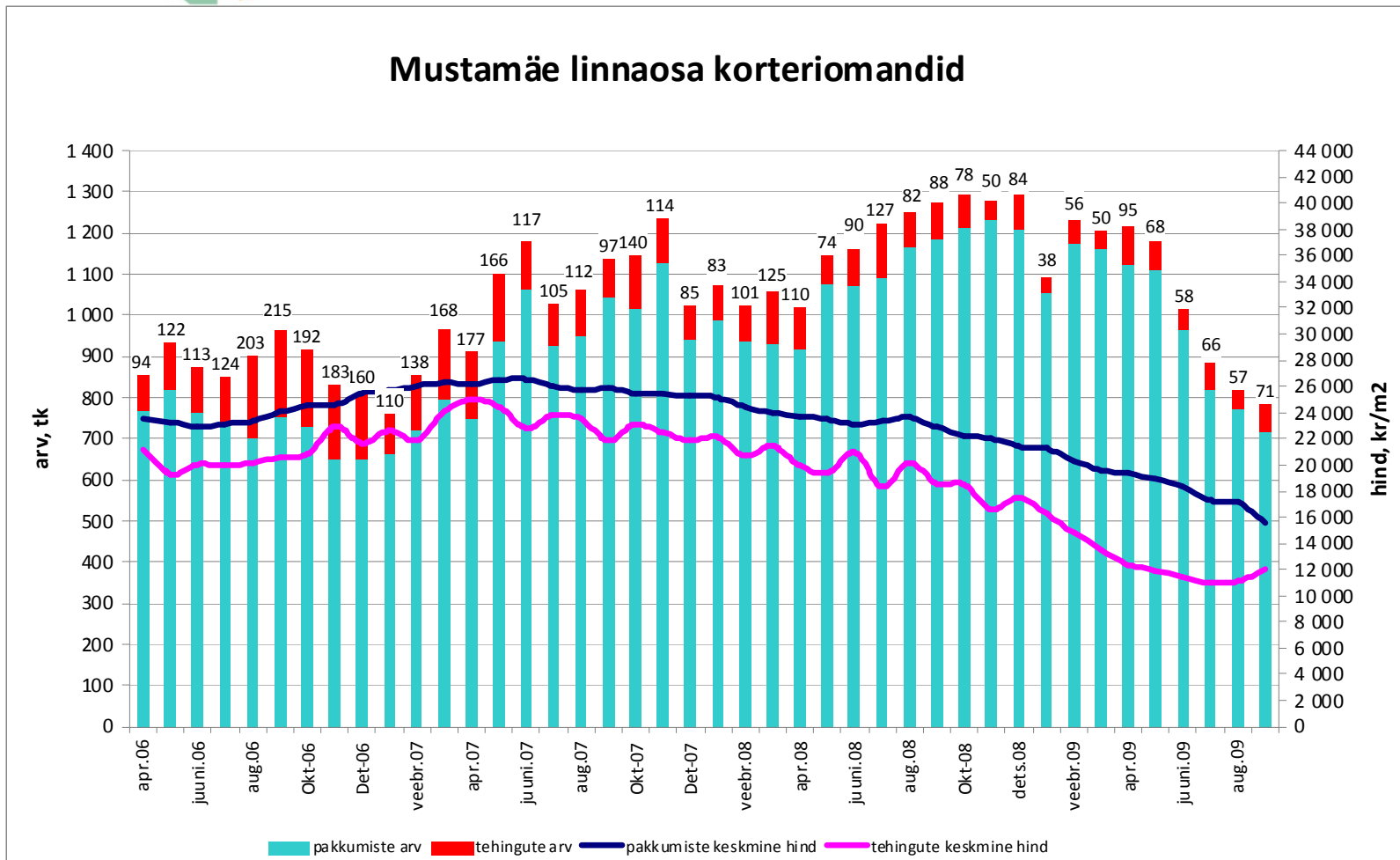
Lasnamäe linnaosa korteriomandid



Allikad: Maa-amet, City24

Tehingute arv on langenud 67%,
tehinguhind 52% (september 7,6%)

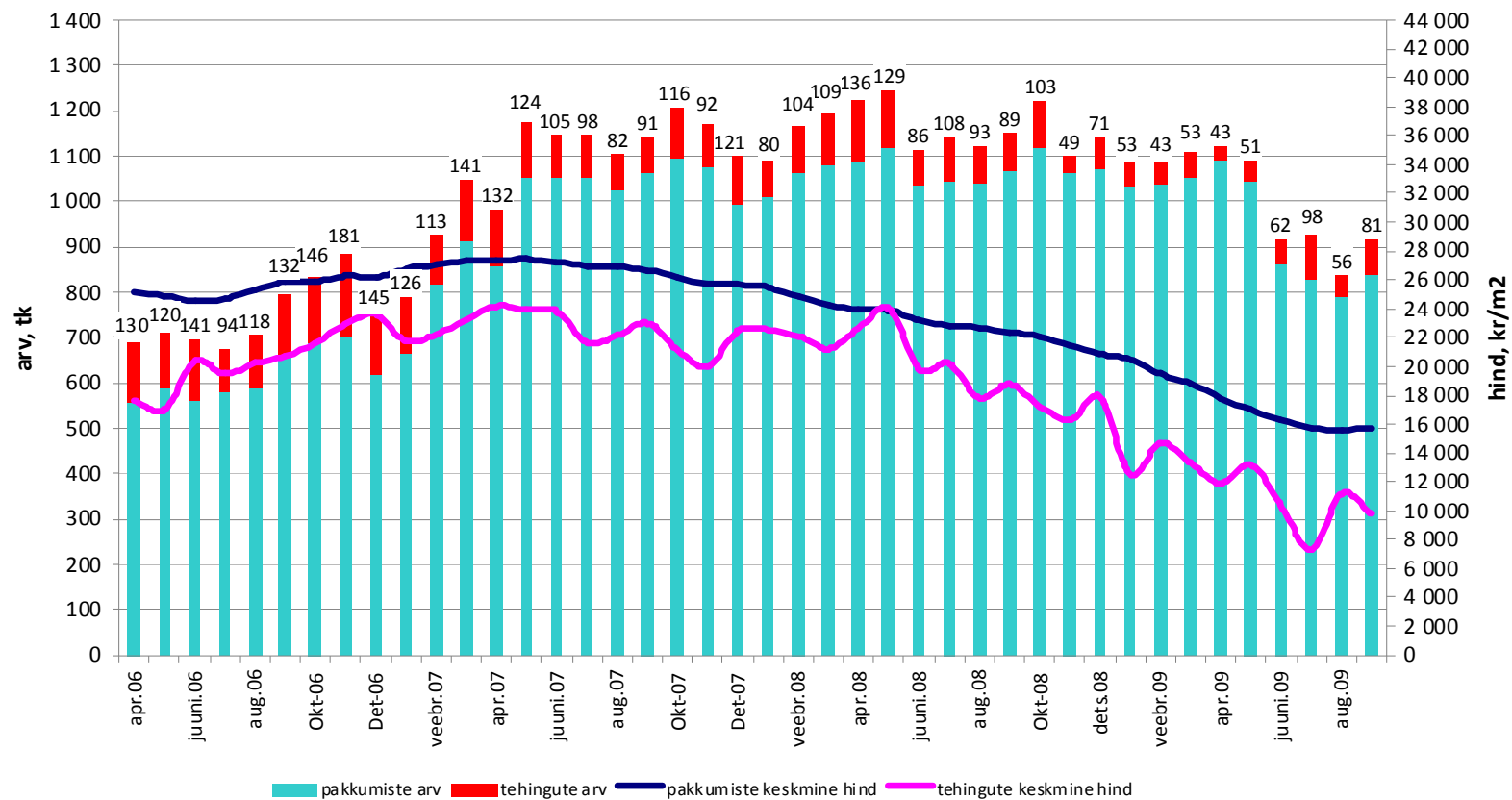
Mustamäe linnaosa korteriomandid



Allikad: Maa-amet, City24

Tehingute arv on langenud 55%,
tehinguhind 60% (september -13%)

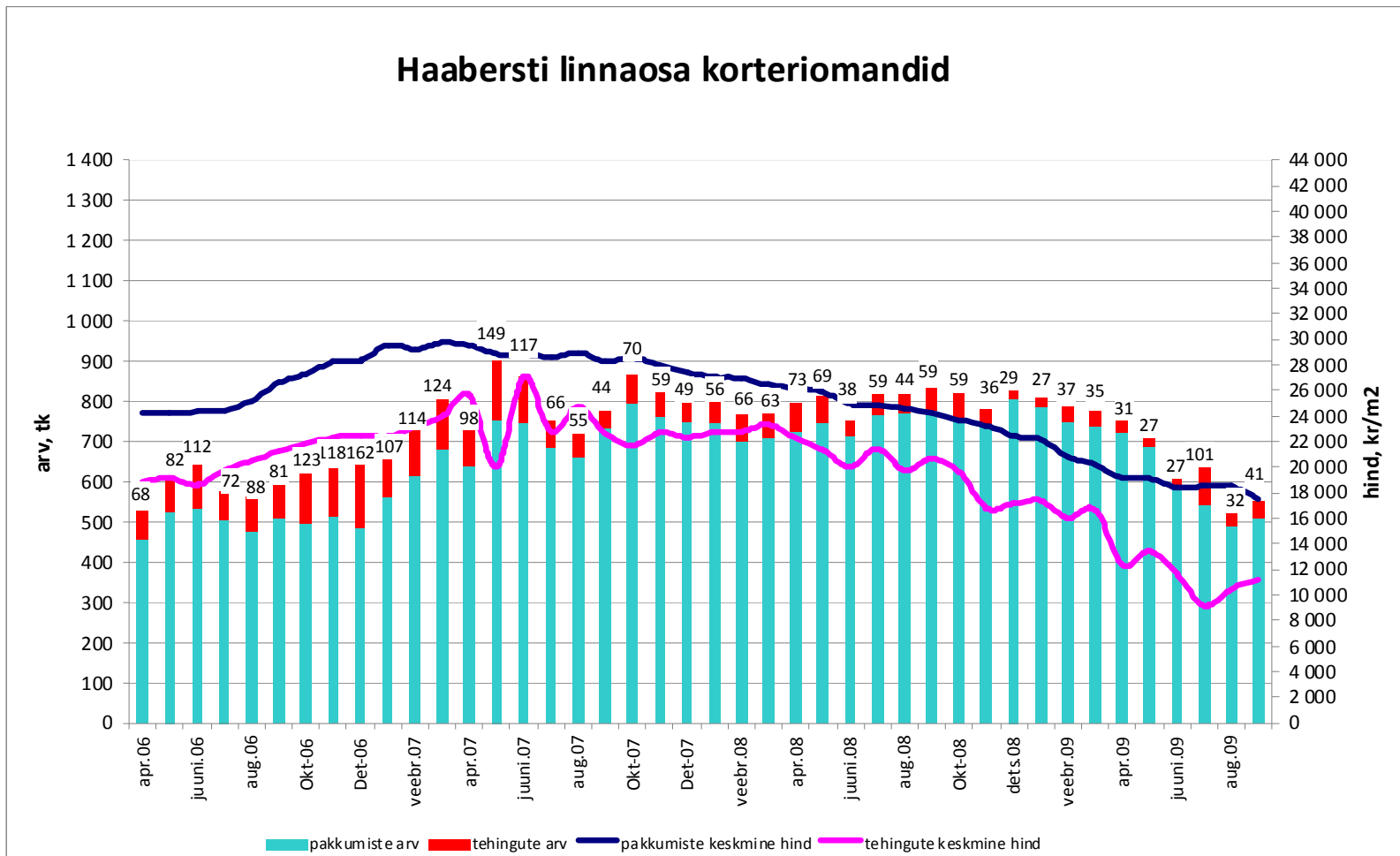
Põhja-Tallinna linnaosa korteriomandid



Allikad: Maa-amet, City24

Tehingute arv on langenud 75%,
tehinguhind 59% (september 8%)

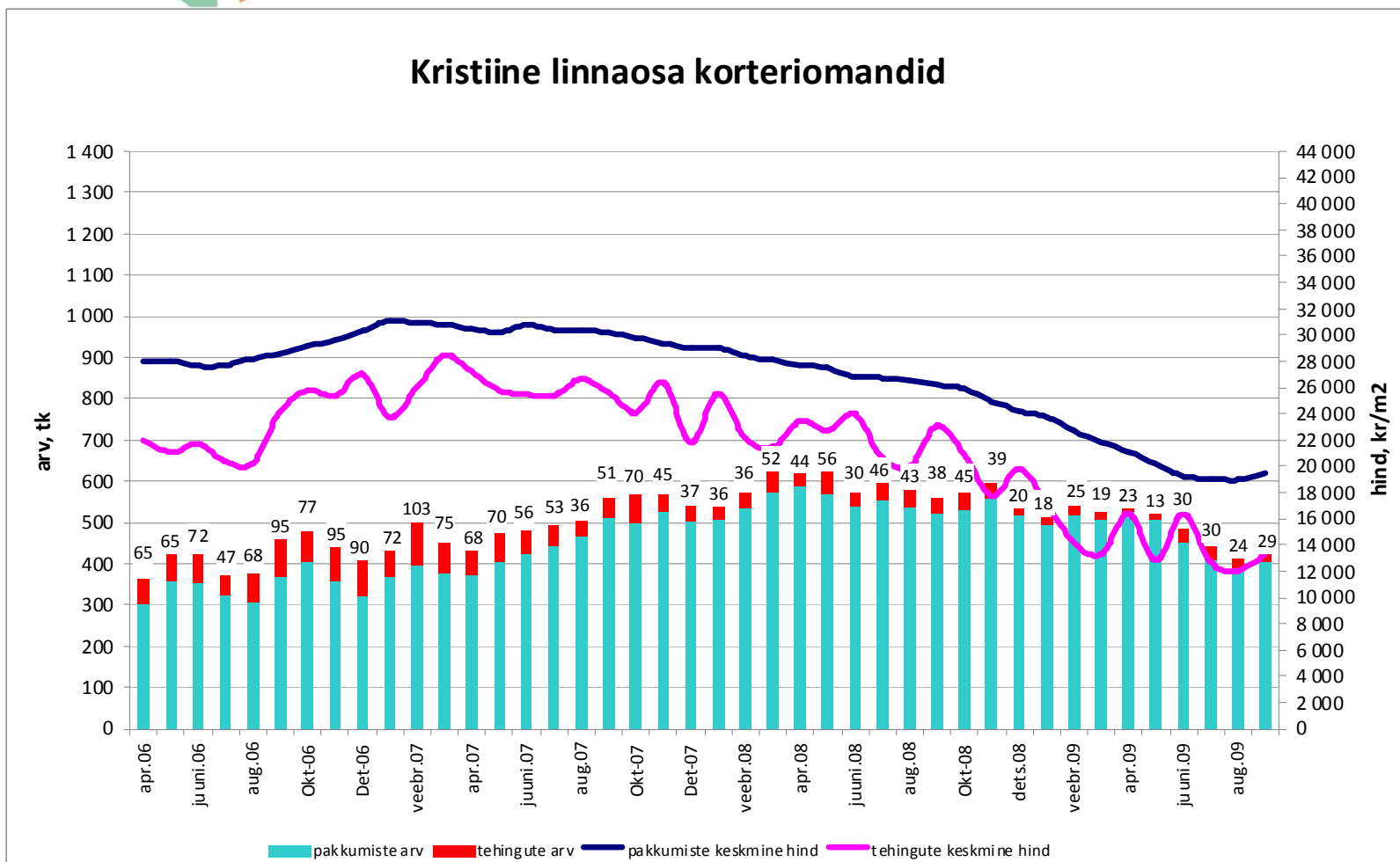
Haabersti linnaosa korteriomandid



Allikad: Maa-amet, City24

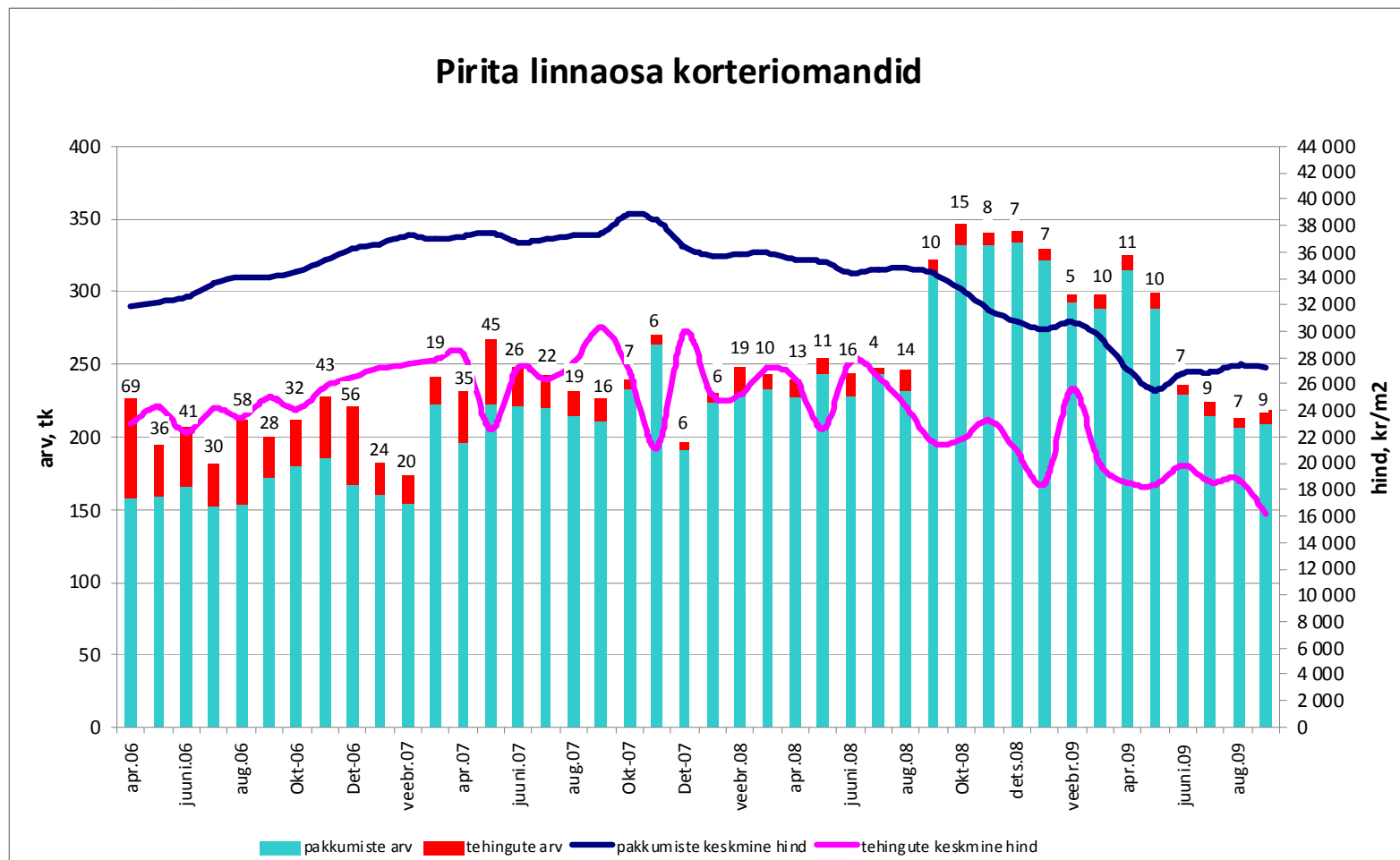
Tehingute arv on langenud 72%,
tehinguhind 53% (september 10,3%)

Kristiine linnaosa korteriomandid



Allikad: Maa-amet, City24

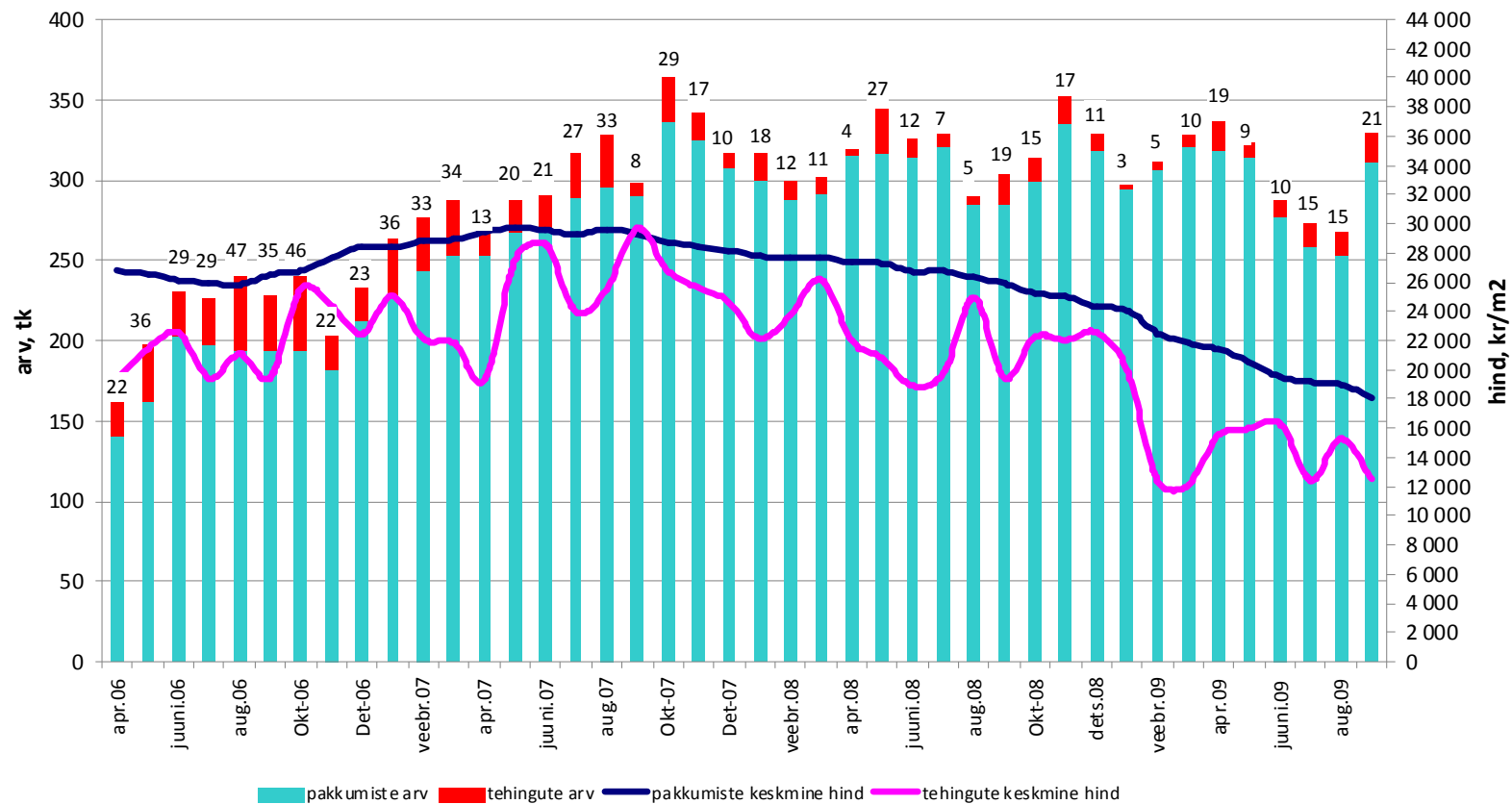
Tehingute arv on langenud 87%,
tehinguhind 46% (september -13,6%)



Allikad: Maa-amet, City24

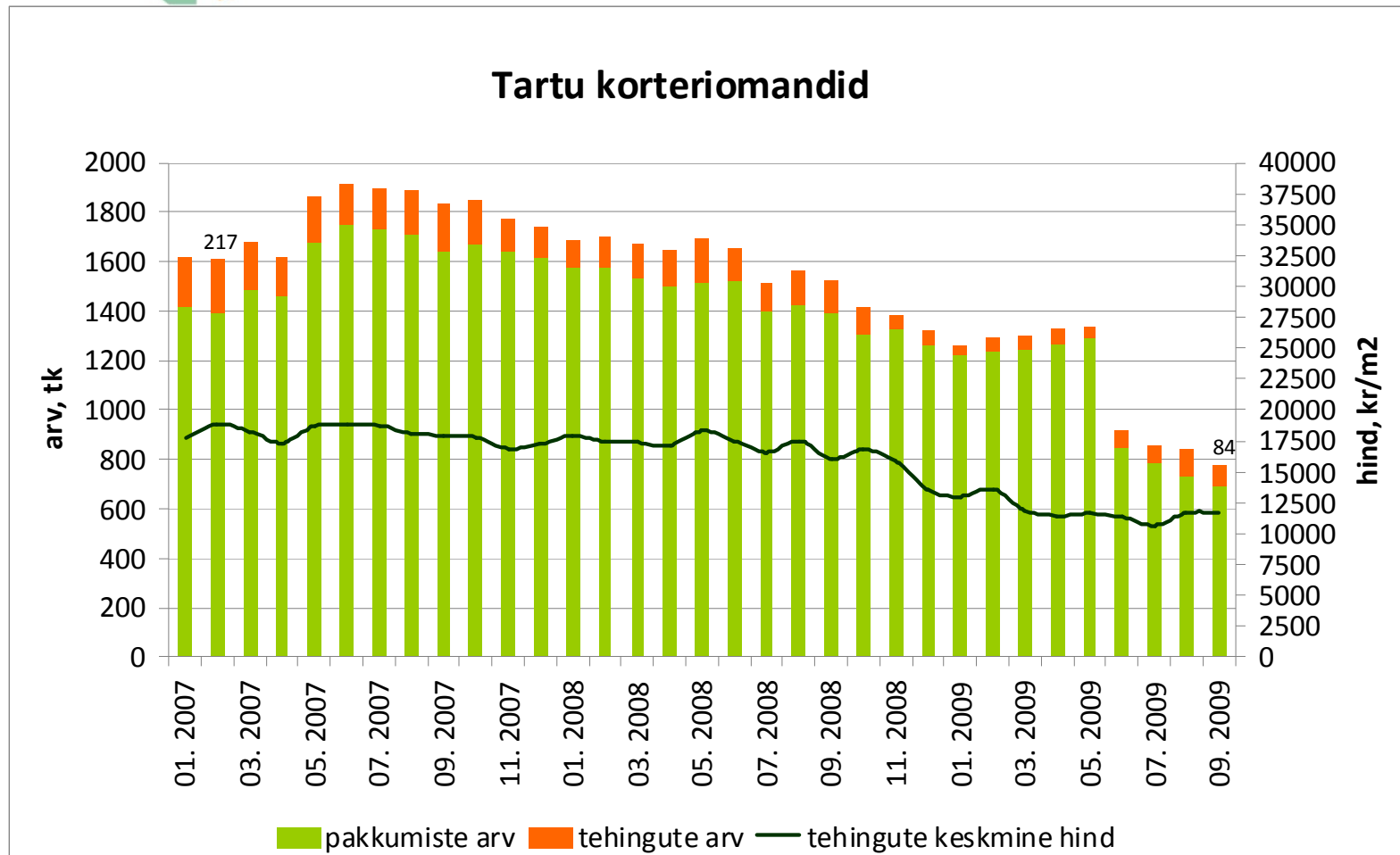
Tehingute arv on langenud 55%,
tehinguhind 58% (september -18,1%)

Nõmme linnaosa korteriomandid



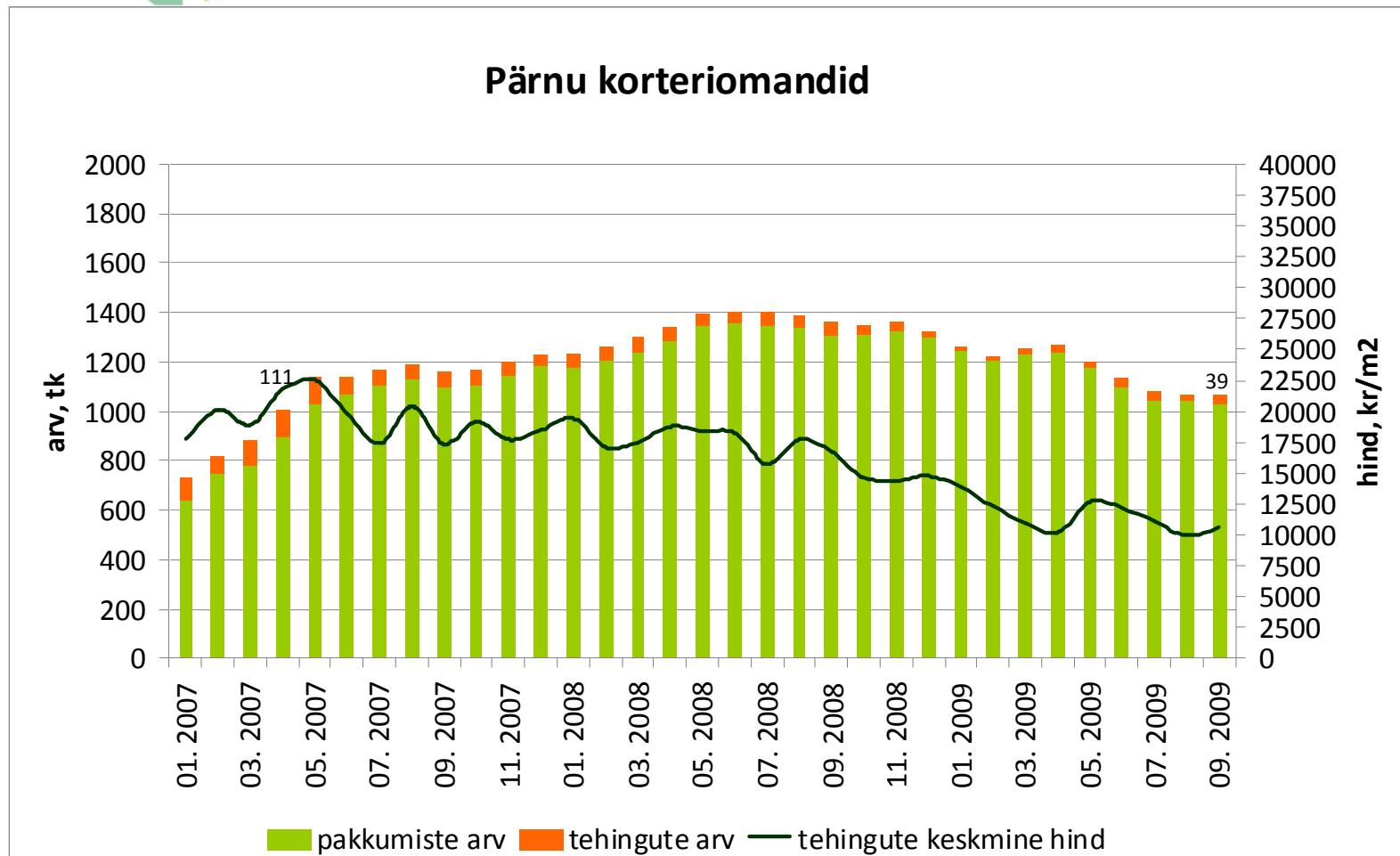
Allikad: Maa-amet, City24

Tehingute arv on langenud 61%,
tehinguhind 38% (september 0,4%)



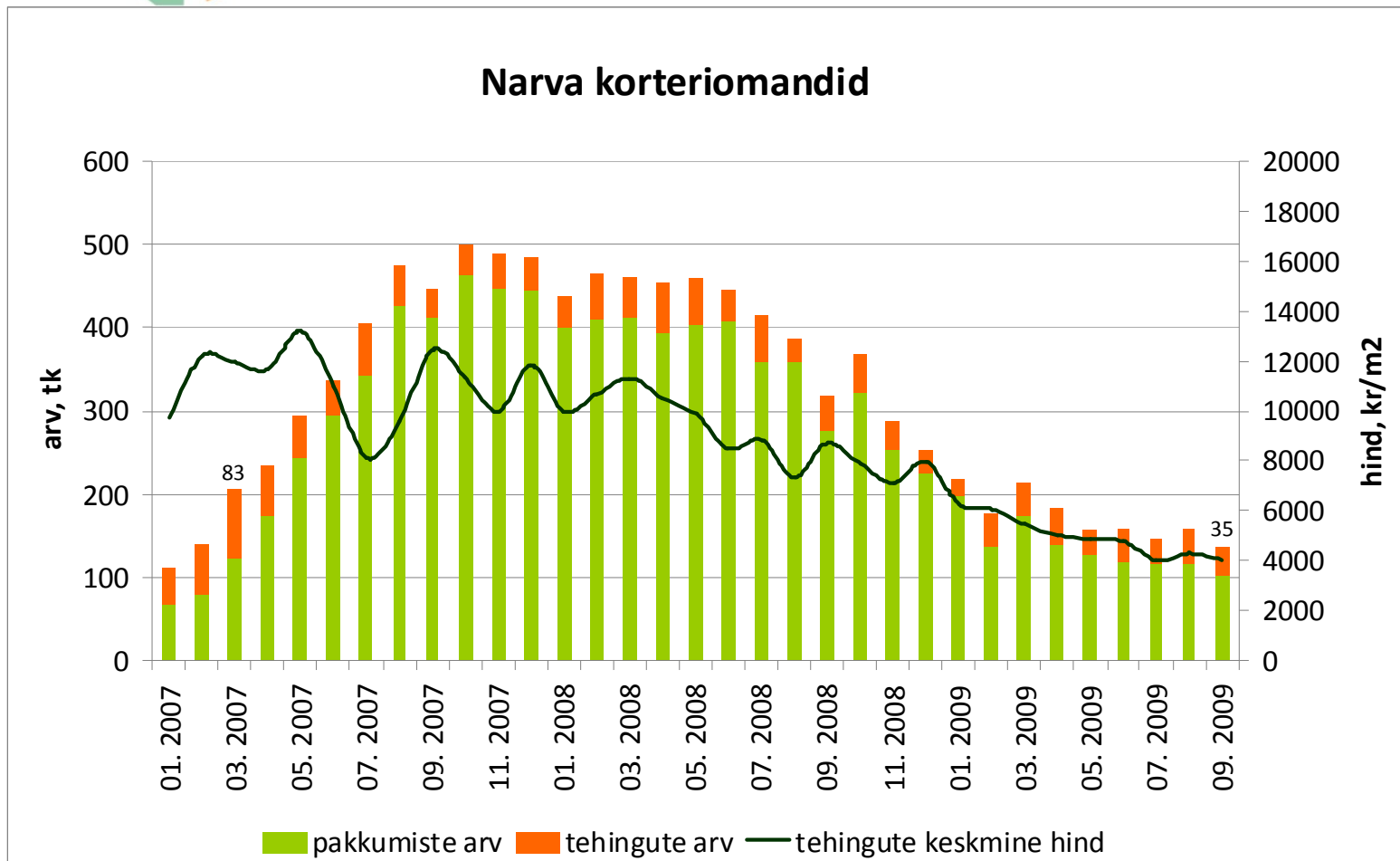
Allikad: Maa-amet, City24

Tehingute arv on langenud 65%,
tehinguhind 53% (september 6,4%)



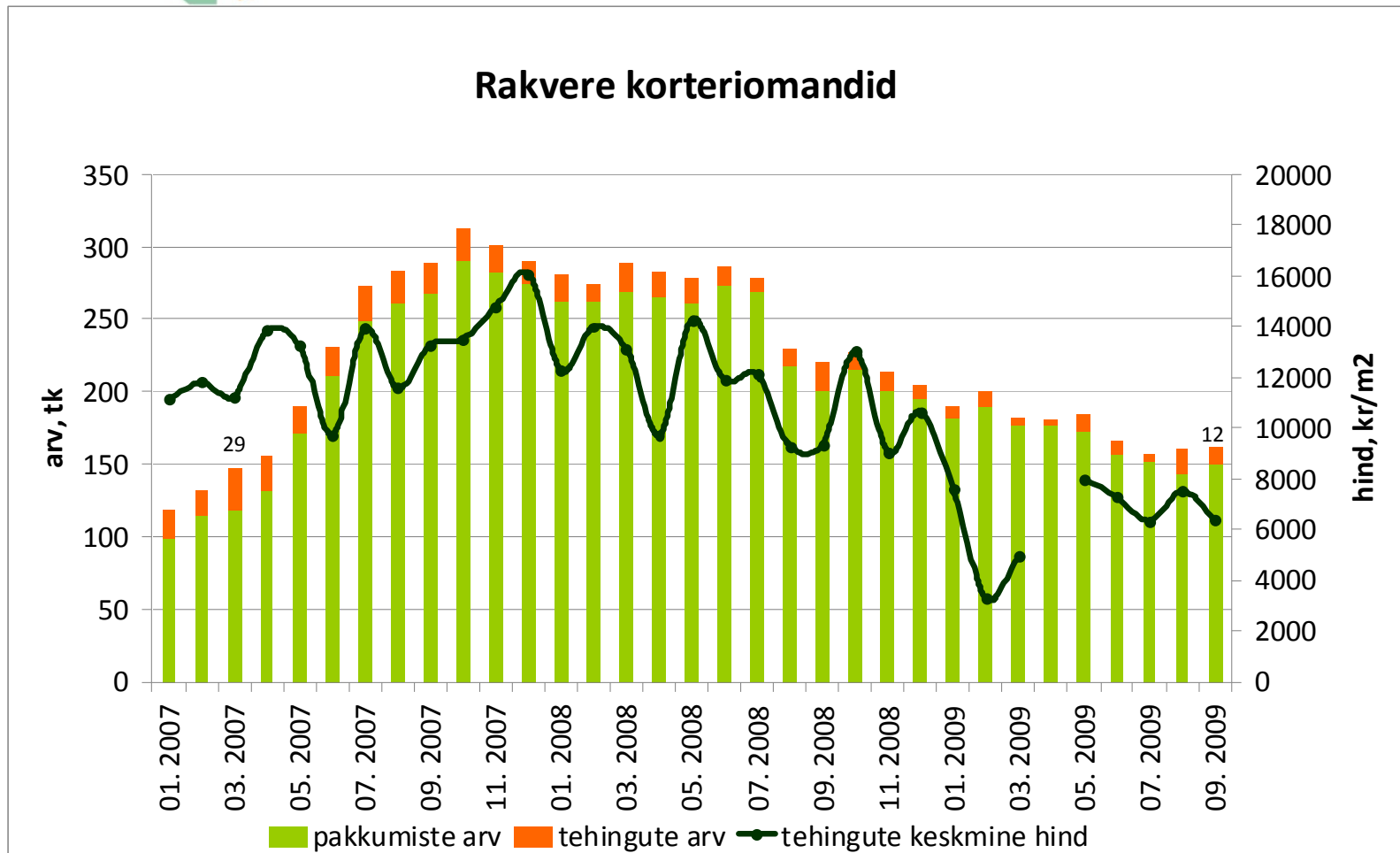
Allikad: Maa-amet, City24

Tehingute arv on langenud 58%,
tehinguhind 69% (september -6,1%)



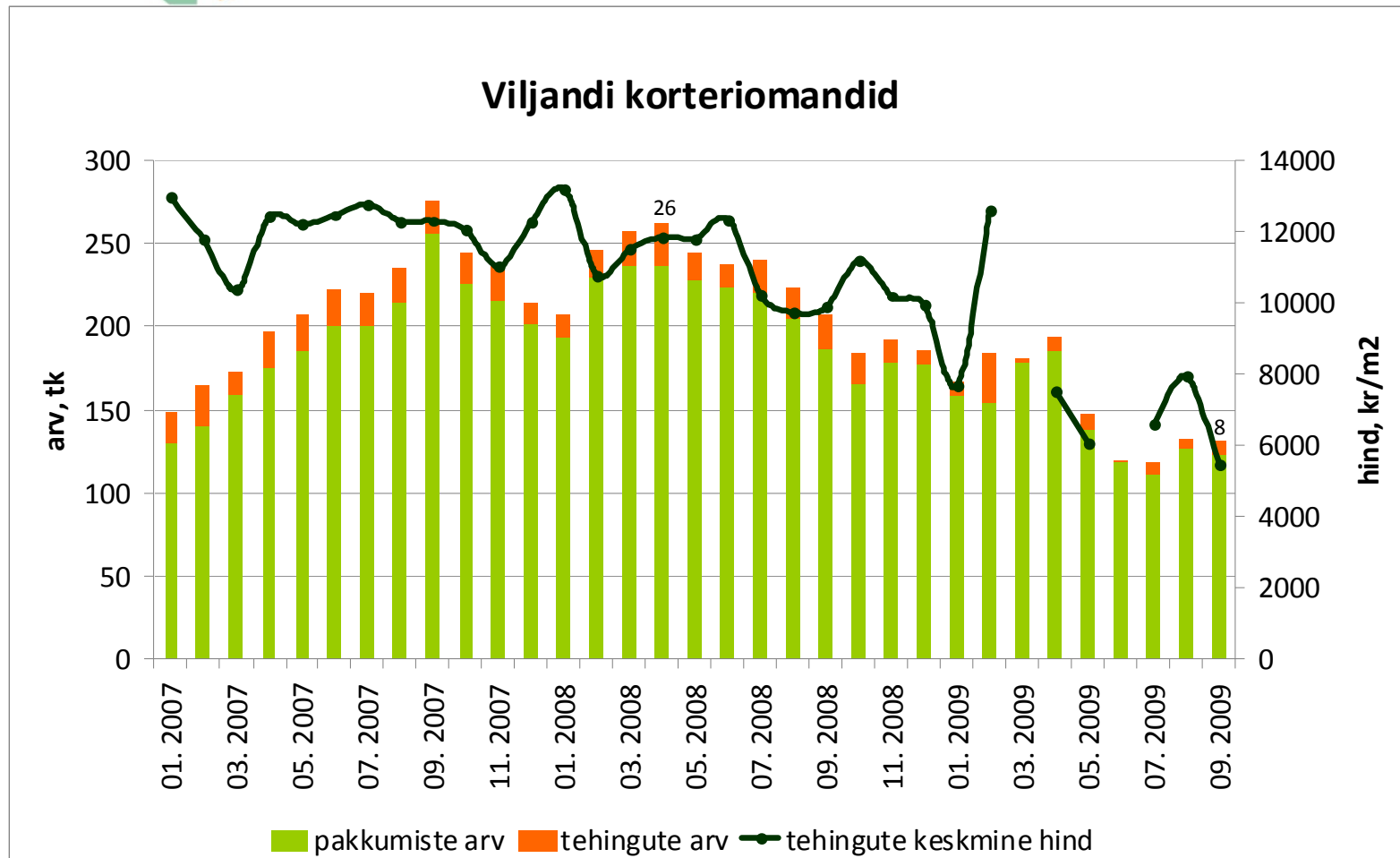
Allikad: Maa-amet, City24

Tehingute arv on langenud 59%,
tehinguhind 60% (september -15%)



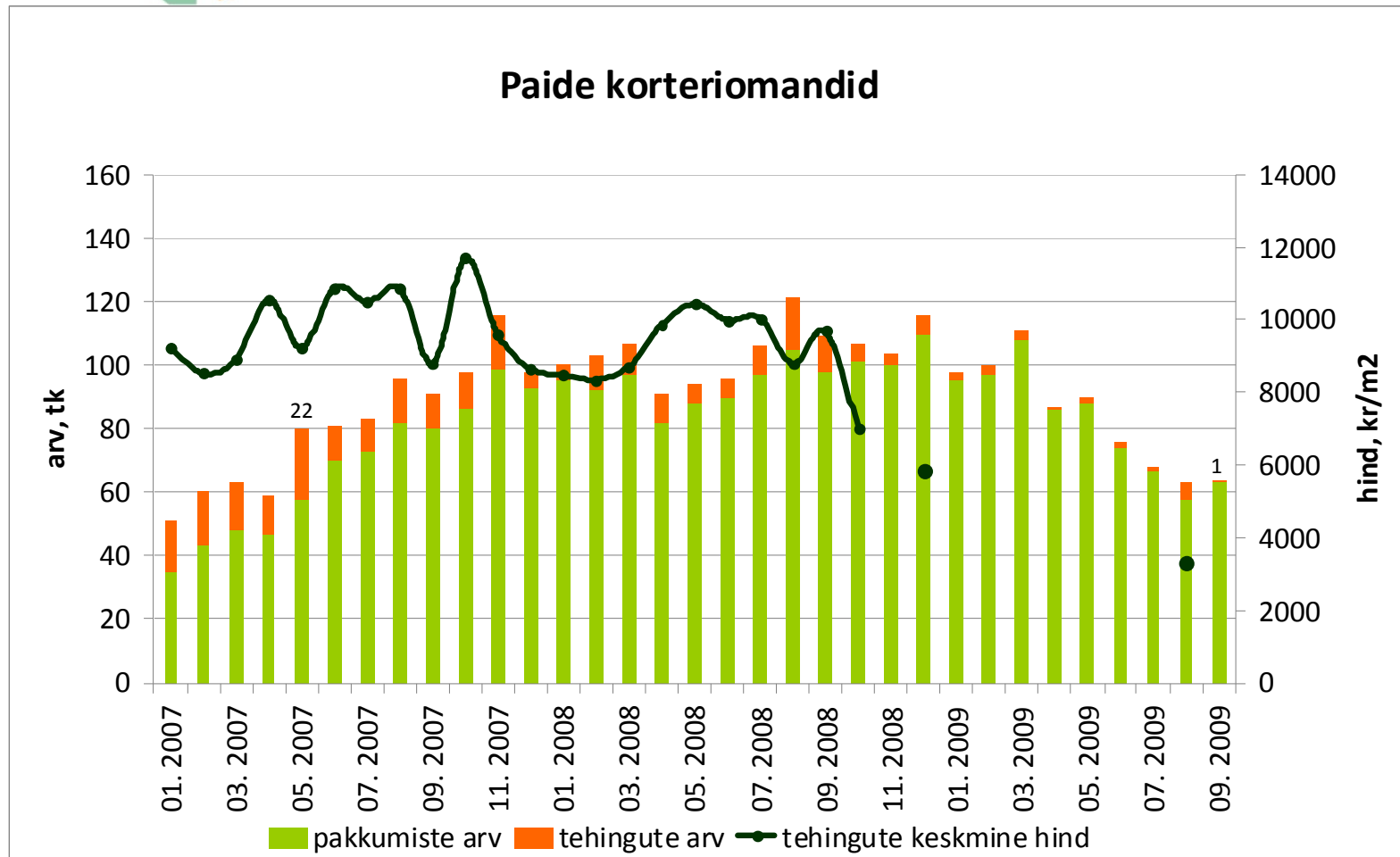
Allikad: Maa-amet, City24

Tehingute arv on langenud 69%,
tehinguhind 59% (september -31,1%)



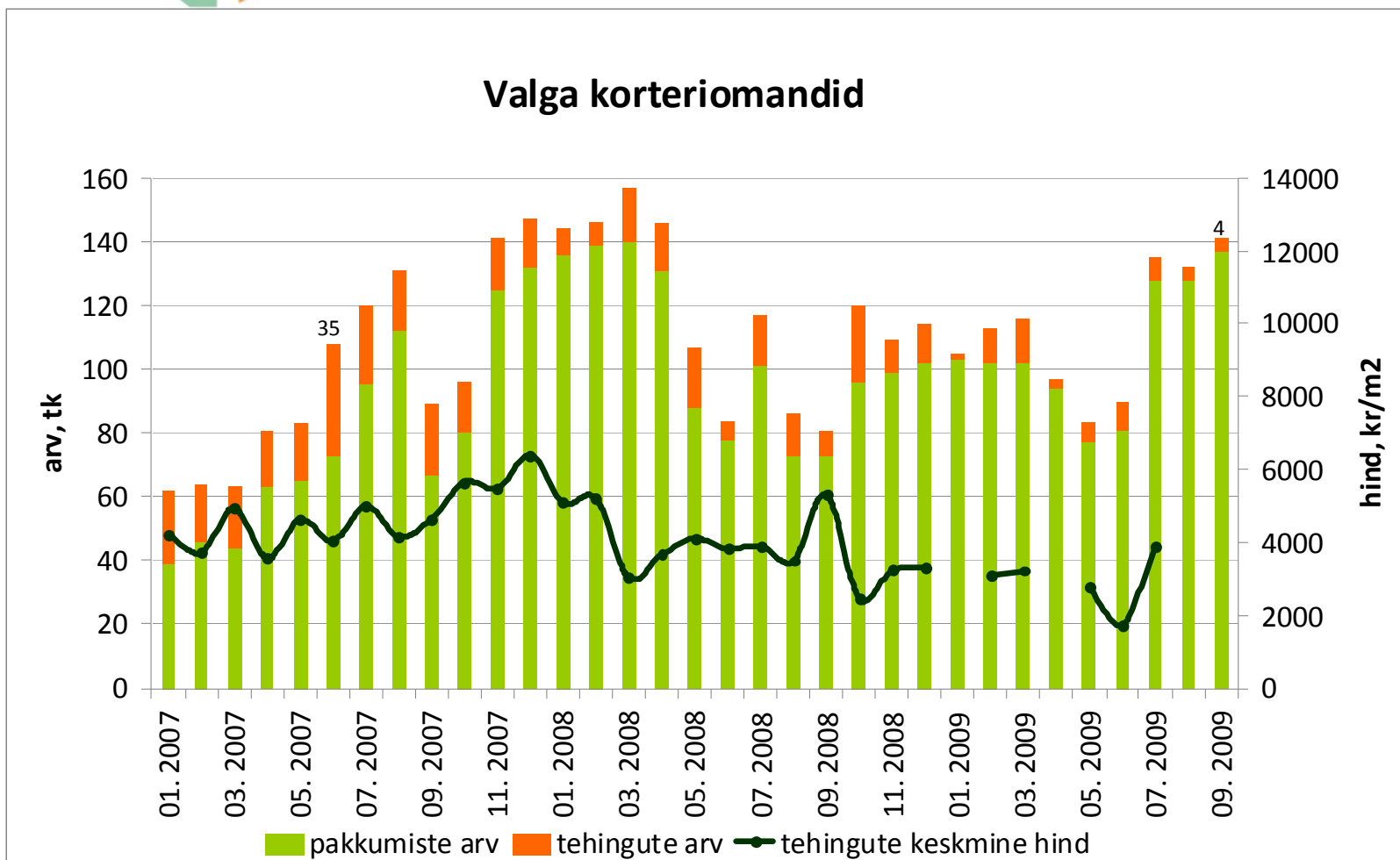
Allikad: Maa-amet, City24

Tehingute arv on langenud 95%,
tehinguhind ca 72%



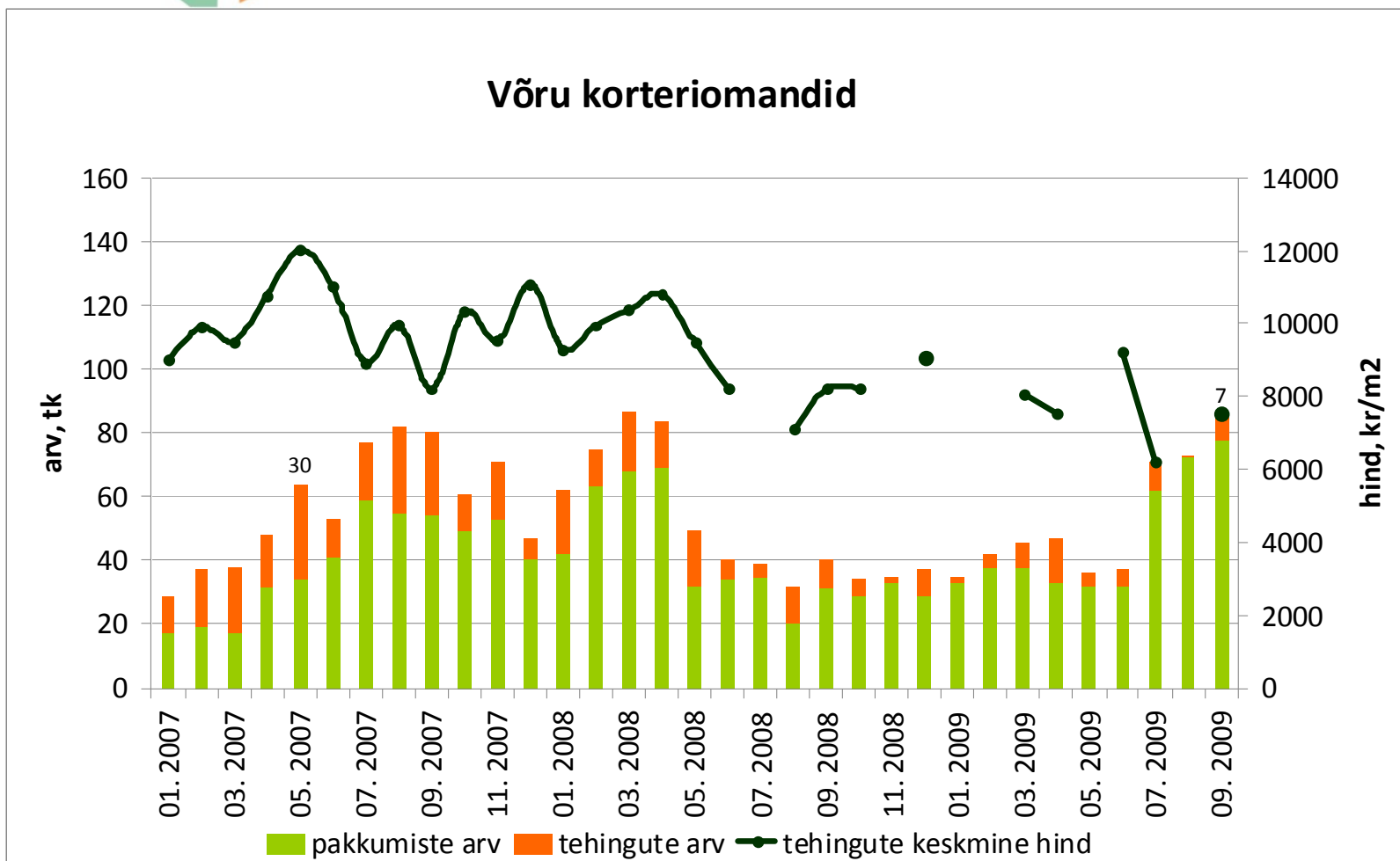
Allikad: Maa-amet, City24

Tehingute arv on langenud 89%,
tehinguhind 39%



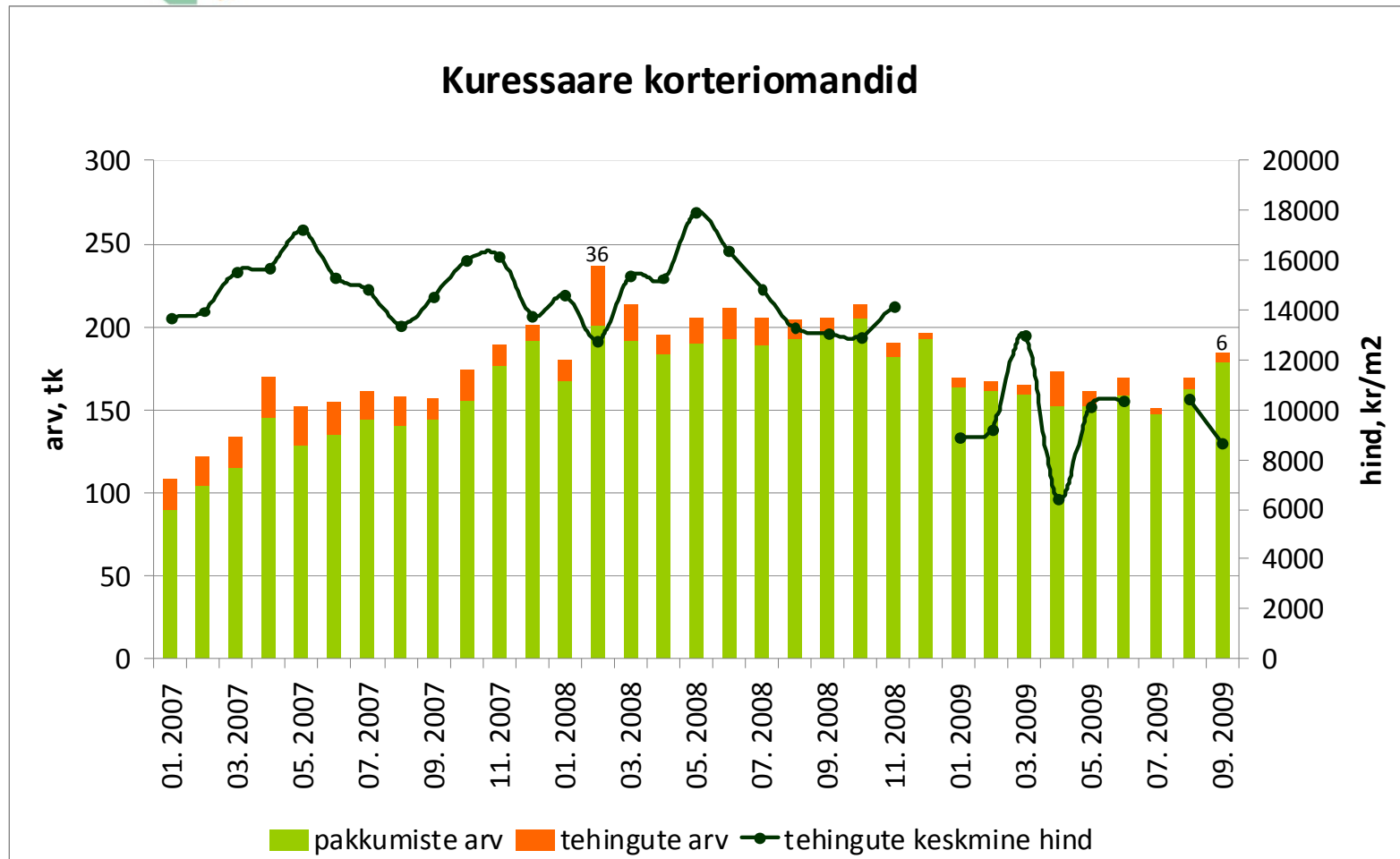
Allikad: Maa-amet, City24

Tehingute arv on langenud 77%
tehinguhind 37%



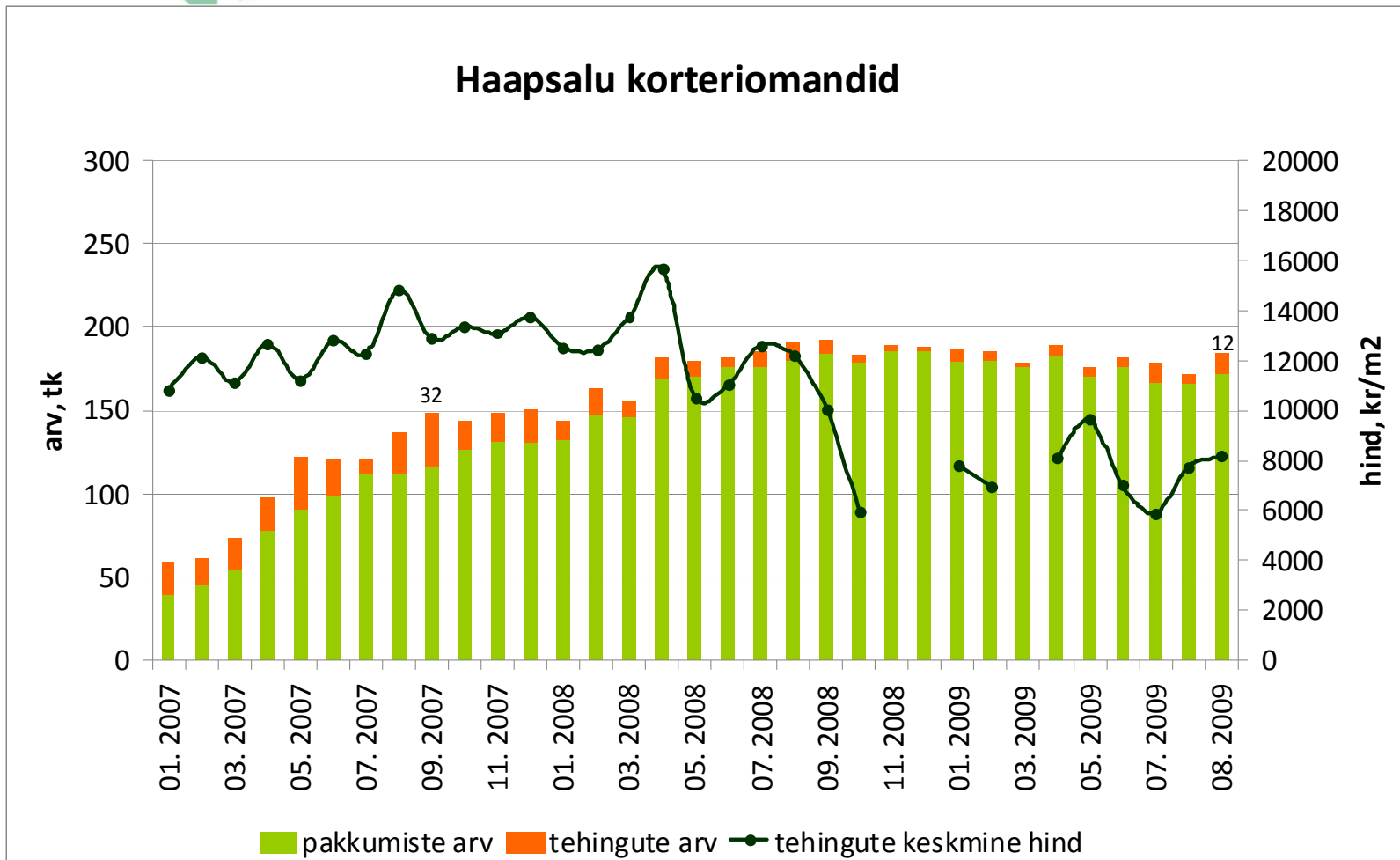
Allikad: Maa-amet, City24

Tehingute arv on langenud 84%,
tehinguhind 52% (september -16,9



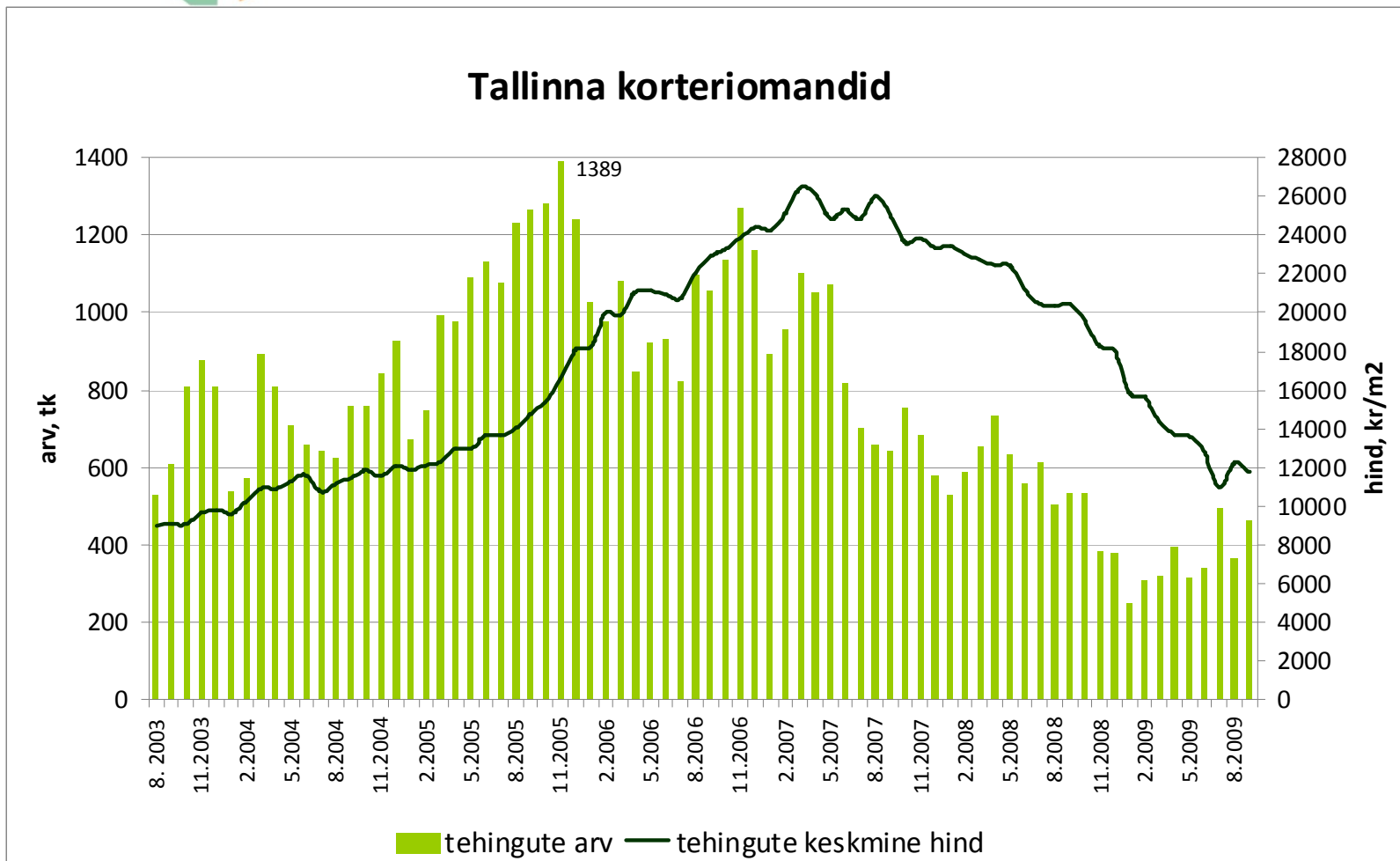
Allikad: Maa-amet, City24

Tehingute arv on langenud 63%,
tehinguhind ca 48% (september 5,3%)



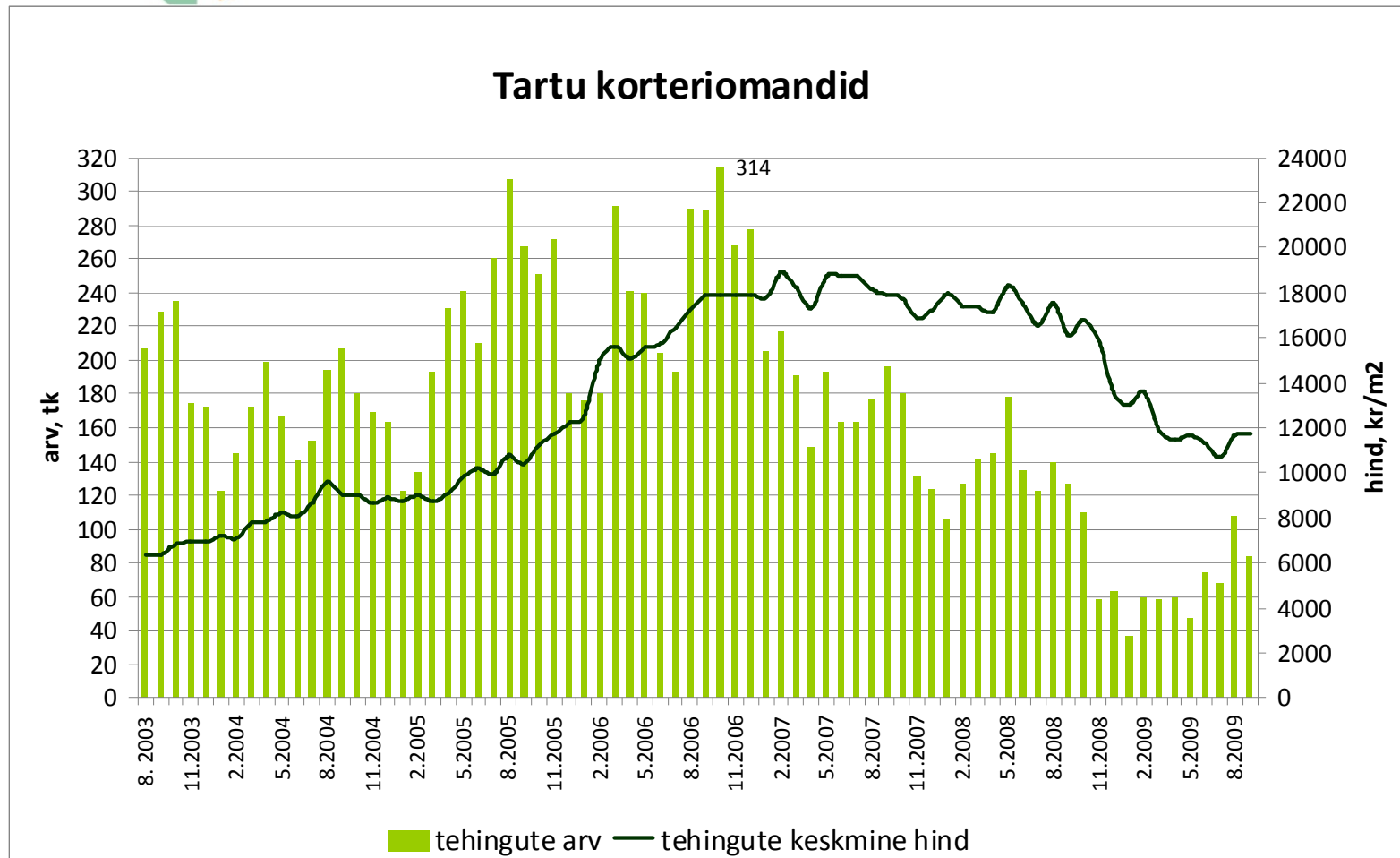
Allikad: Maa-amet, City24

Tehingute arv on langenud 66%,
tehinguhind 56% (september -4,1%)



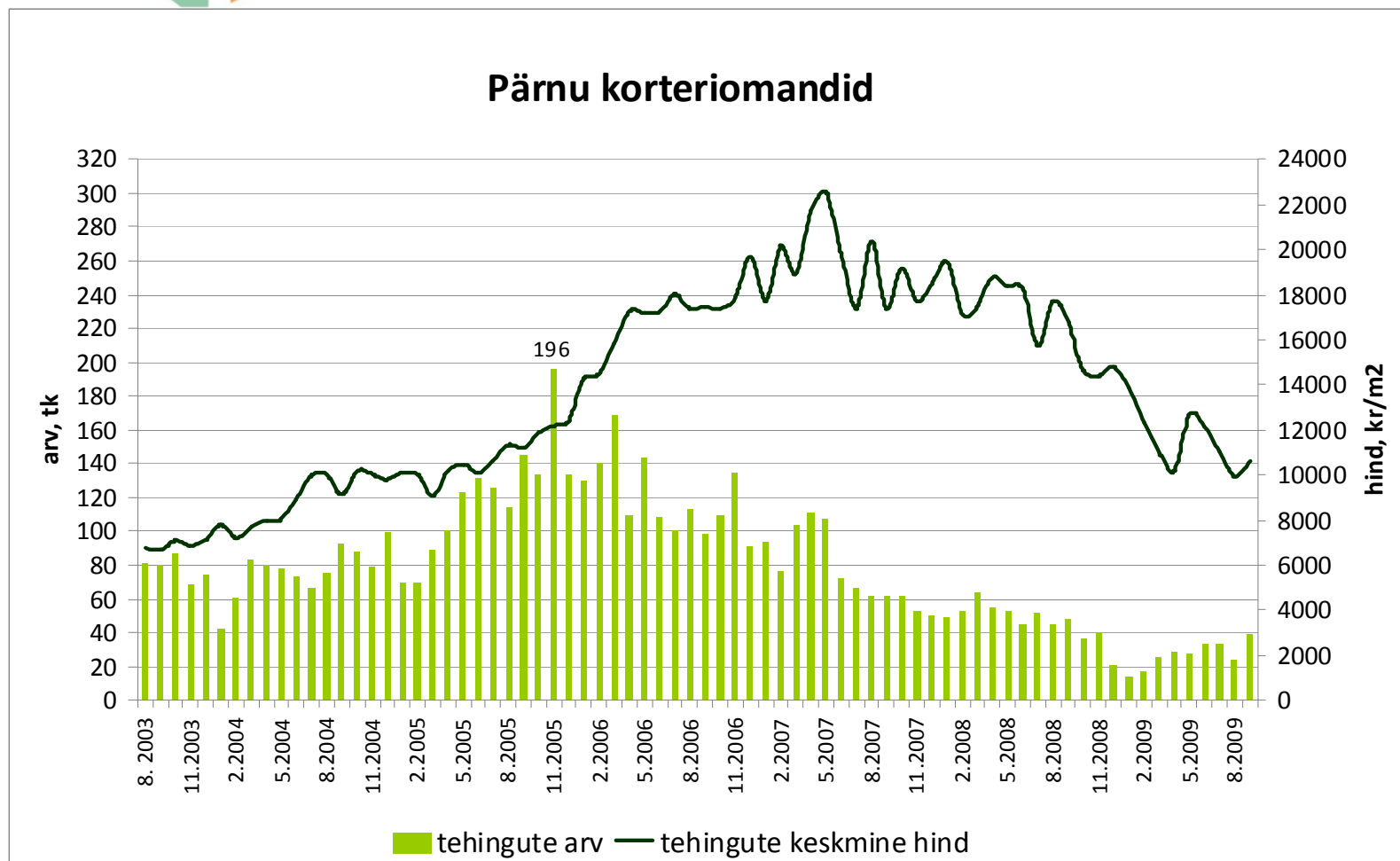
Allikas: Maa-amet

Tehingute arv on langenud 73%,
tehinguhind 38% (september 0,4%)



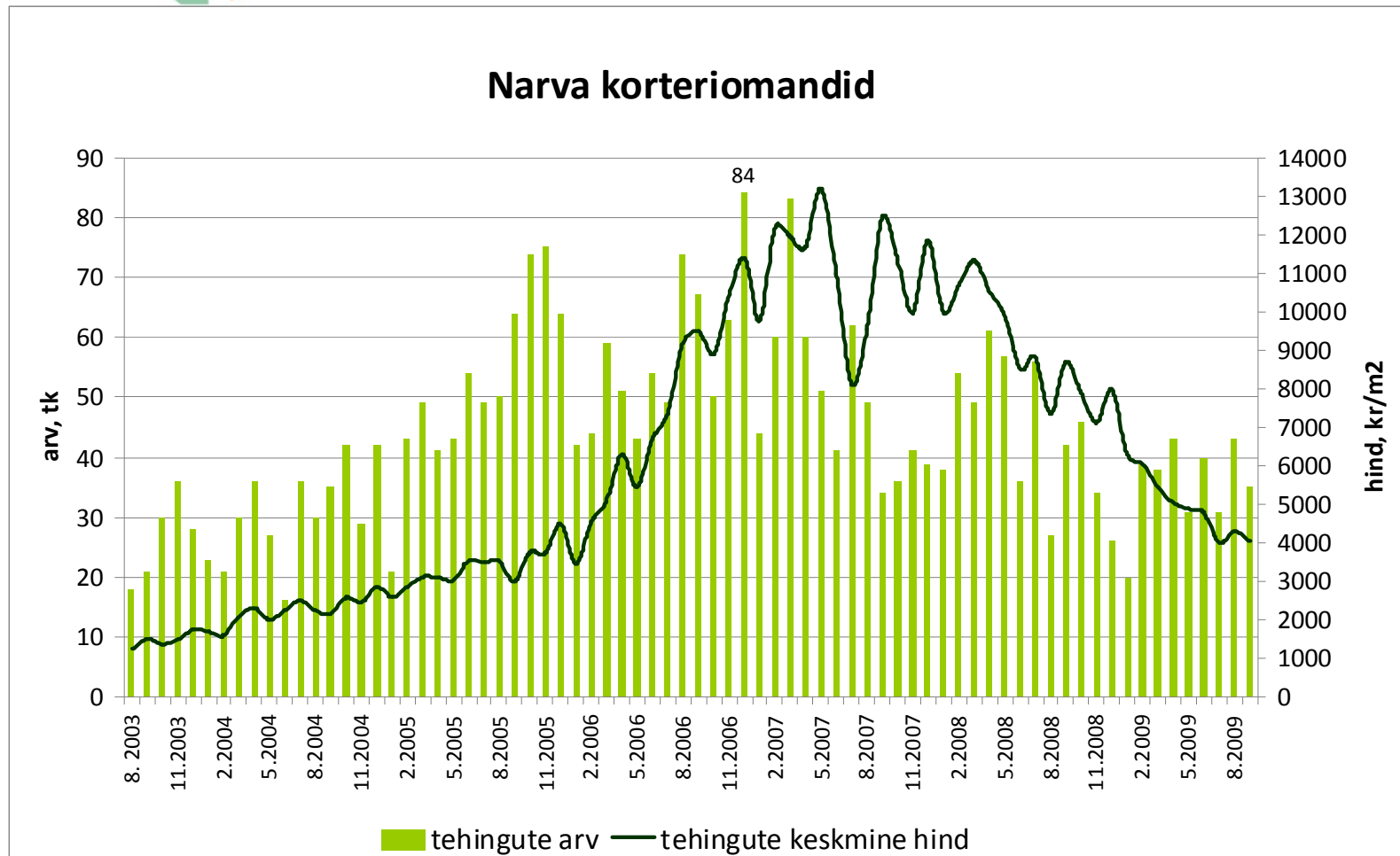
Allikas: Maa-amet

Tehingute arv on langenud 80%,
tehinguhind 53% (september 6,4%)



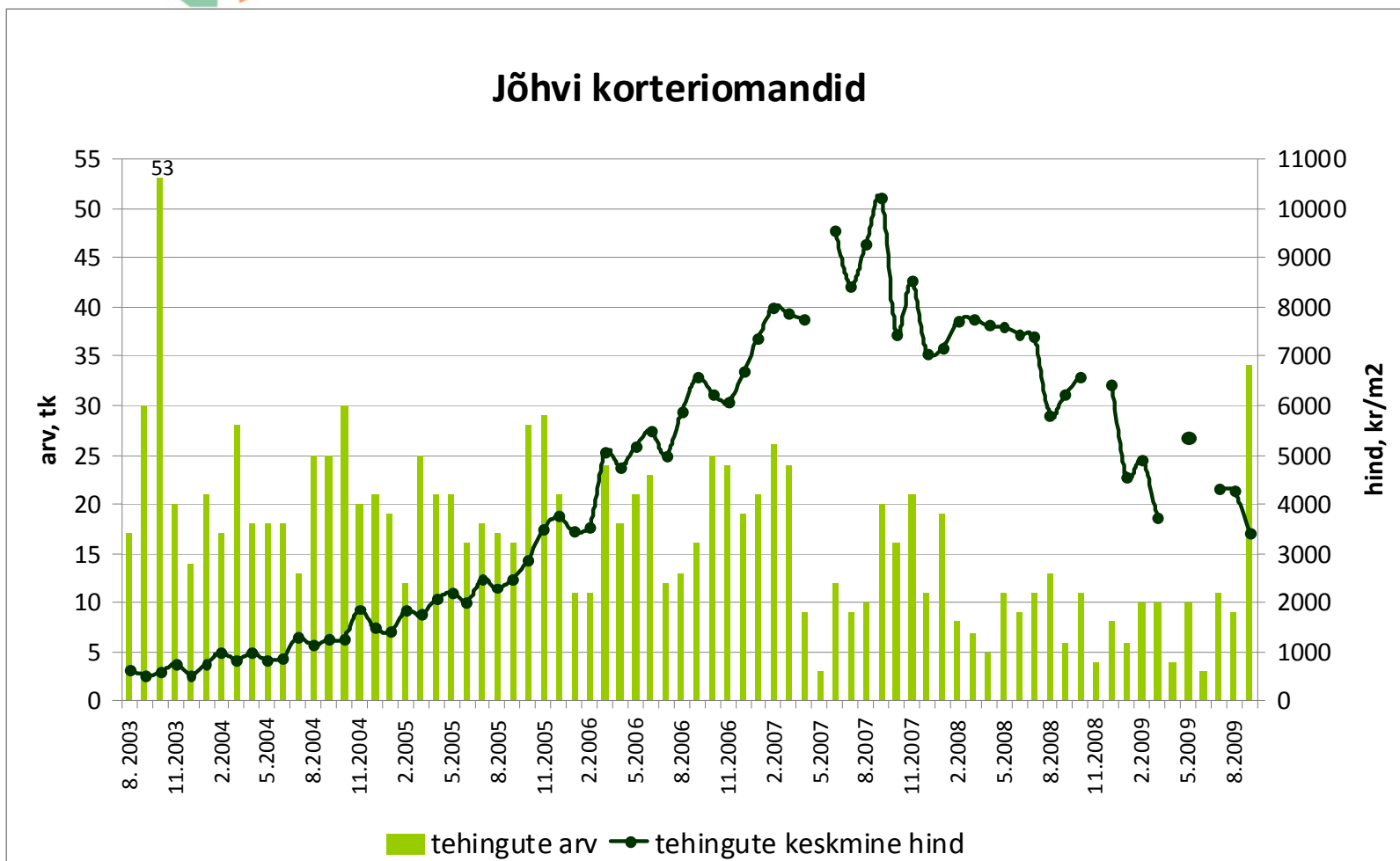
Allikas: Maa-amet

Tehingute arv on langenud 58%,
tehinguhind 69 % (september -6,1%)



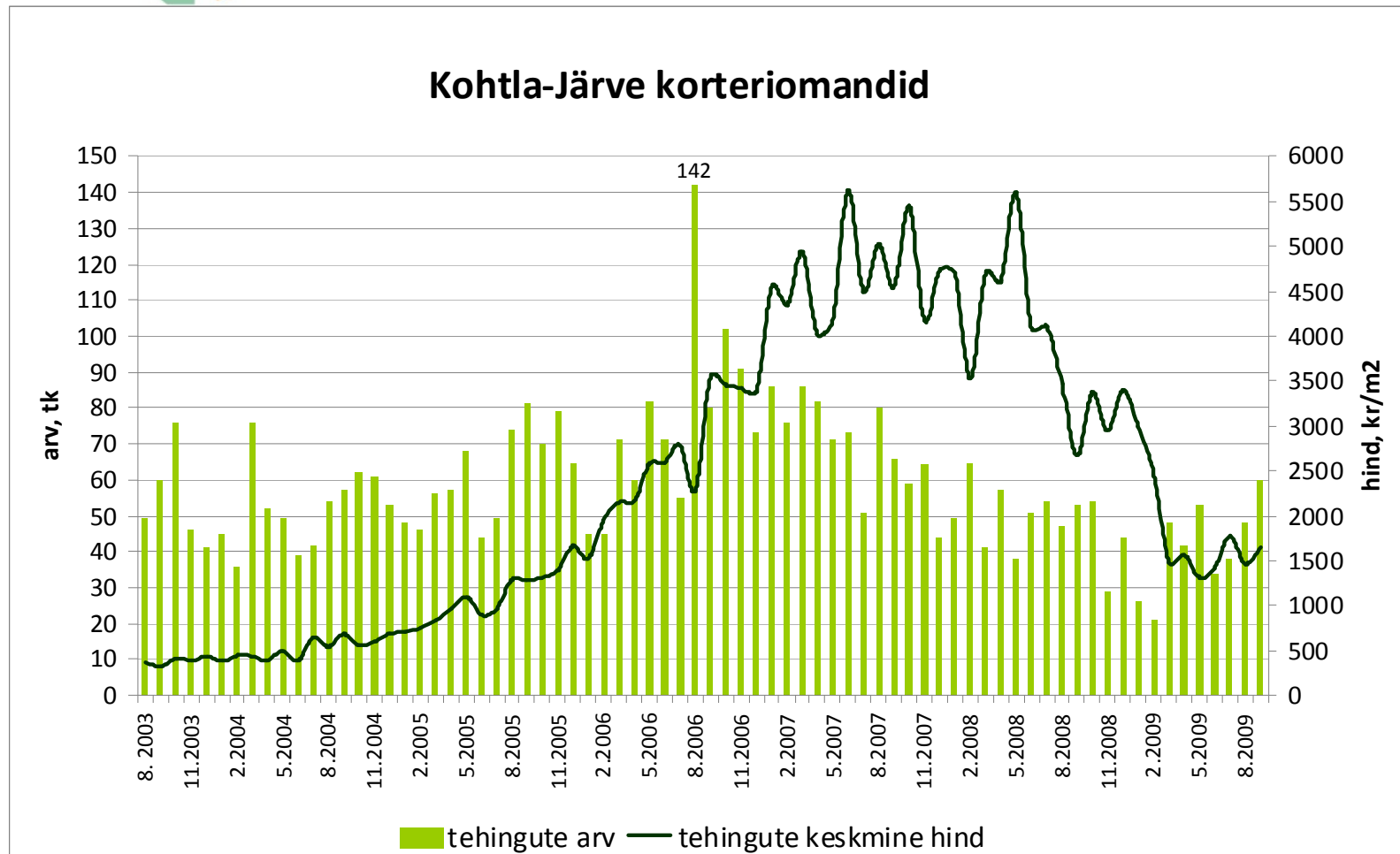
Allikas: Maa-amet

Tehingute arv on langenud 36%,
tehinguhind 67% (september -19,8%



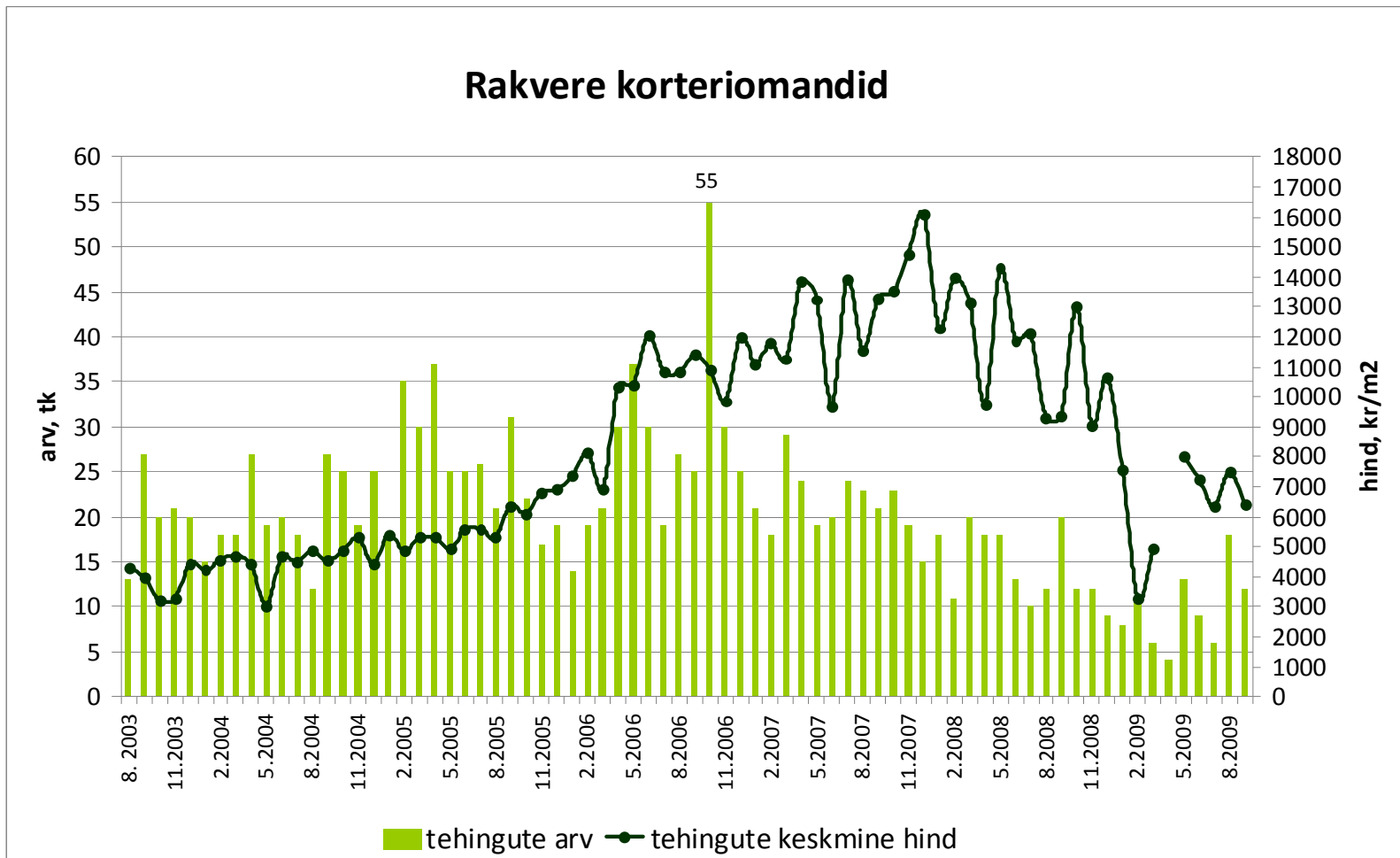
Allikas: Maa-amet

Tehingute arv on langenud 58%,
tehinguhind 71% (september 12,2%)



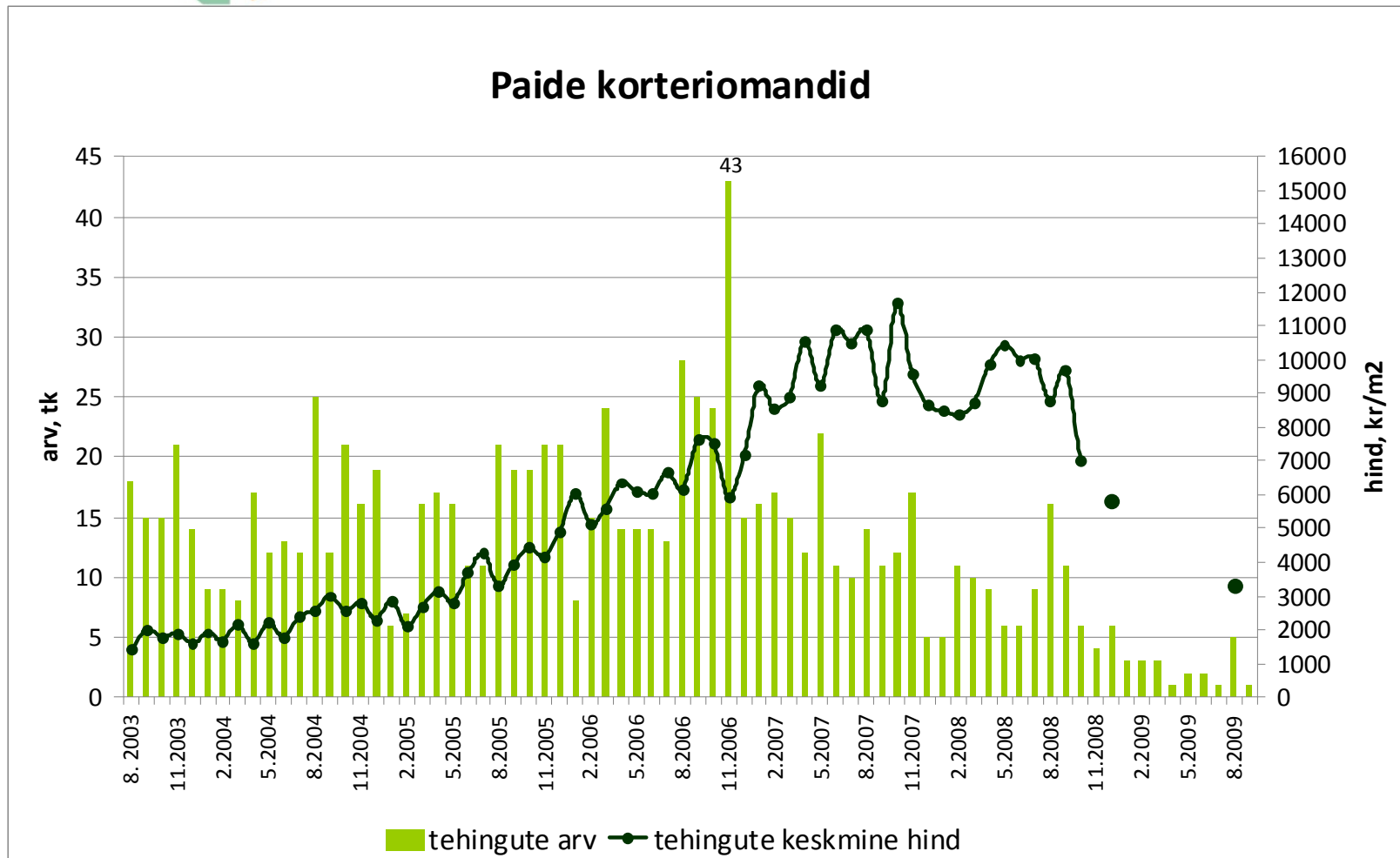
Allikas: Maa-amet

Tehingute arv on langenud 78%,
tehinguhind 60% (september -15%)



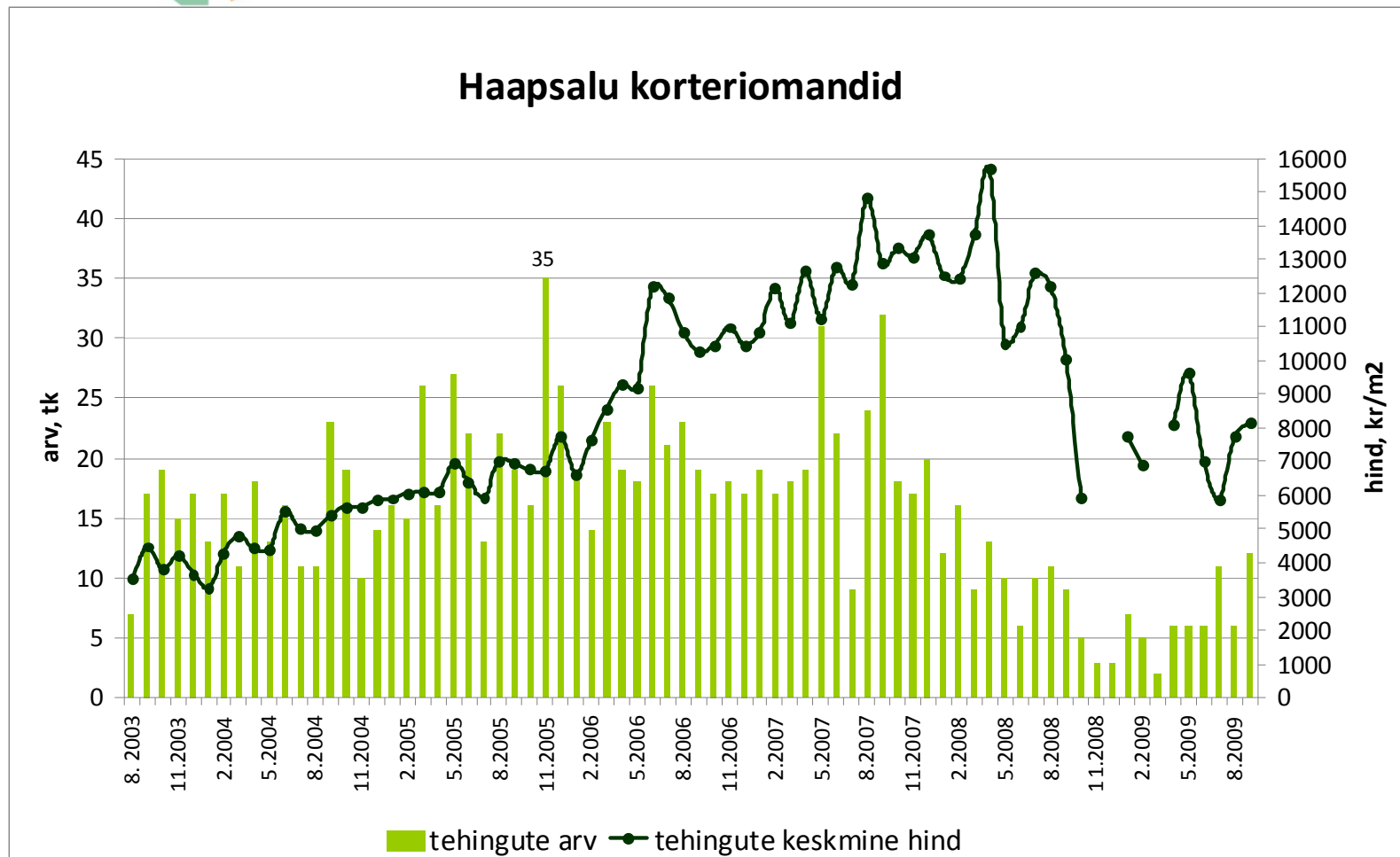
Allikas: Maa-amet

Tehingute arv on langenud 98%,
tehinguhind ca 72%



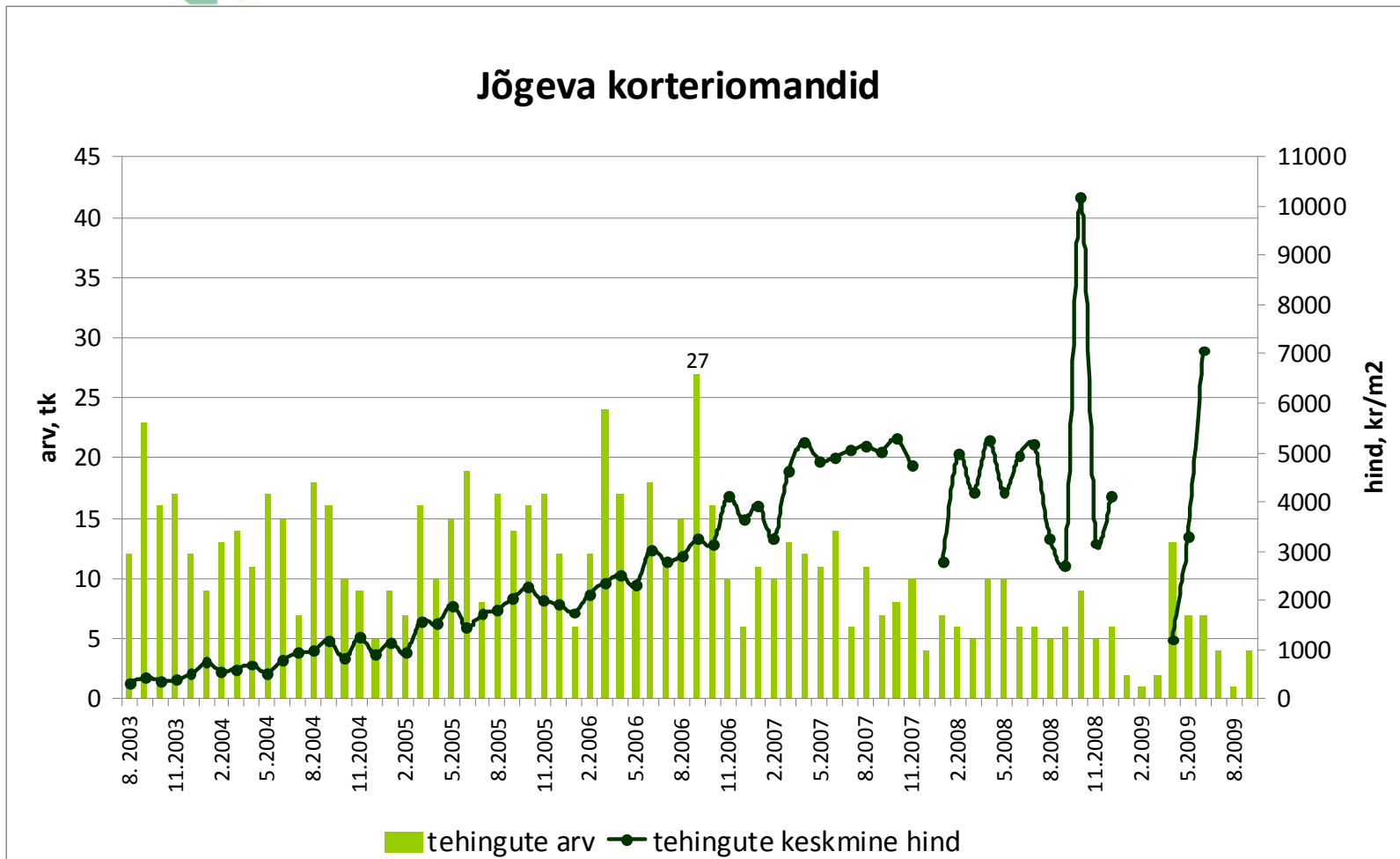
Allikas: Maa-amet

Tehingute arv on langenud 66%,
tehinguhind ca 48% (september 5,3%)



Allikas: Maa-amet

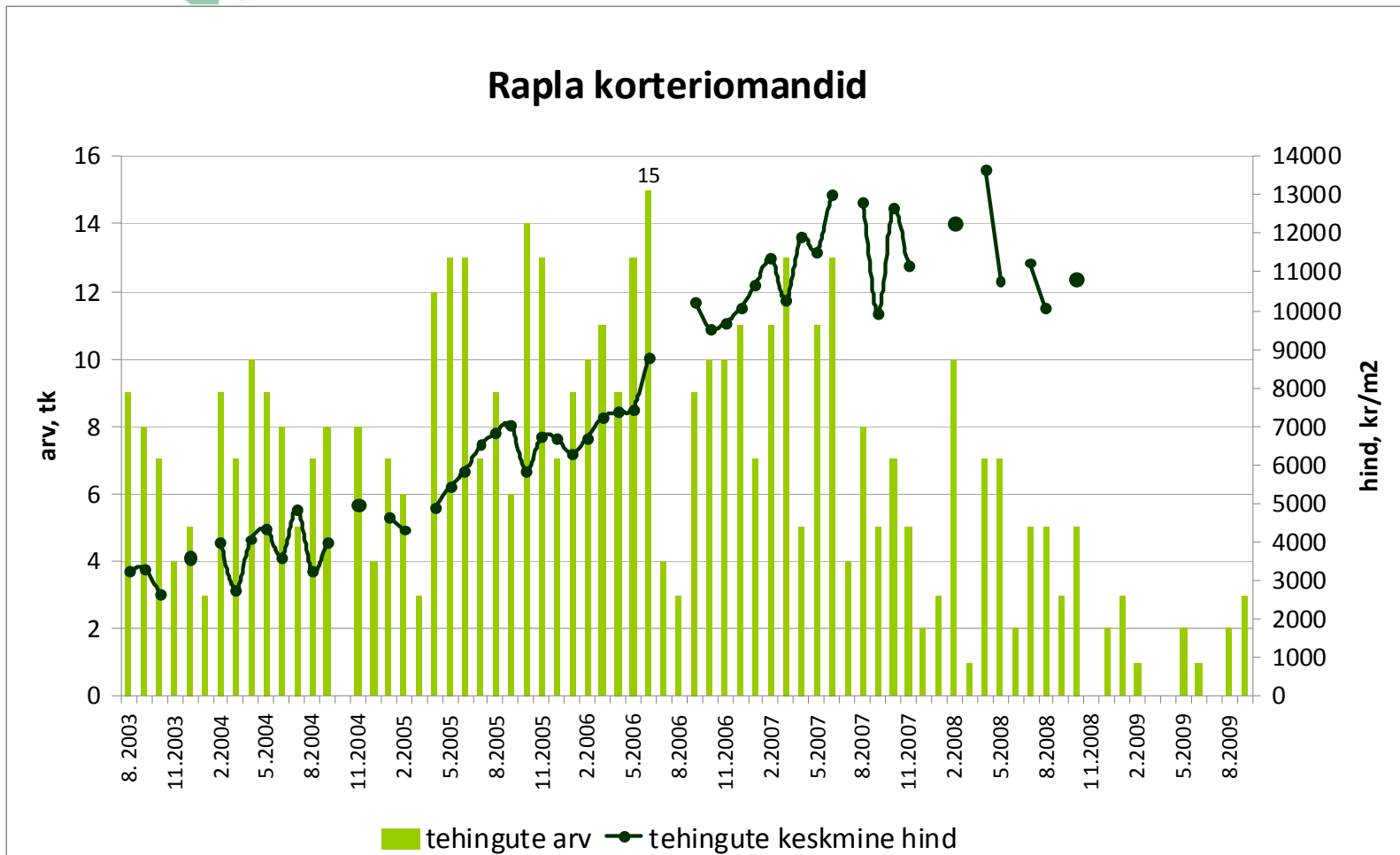
Tehingute arv on langenud 85%,
tehinguhind ca 31%*



Allikas: Maa-amet

* 2008-2009 järsud hinnatõusud on tingitud vabaturuvälistest tehingutest

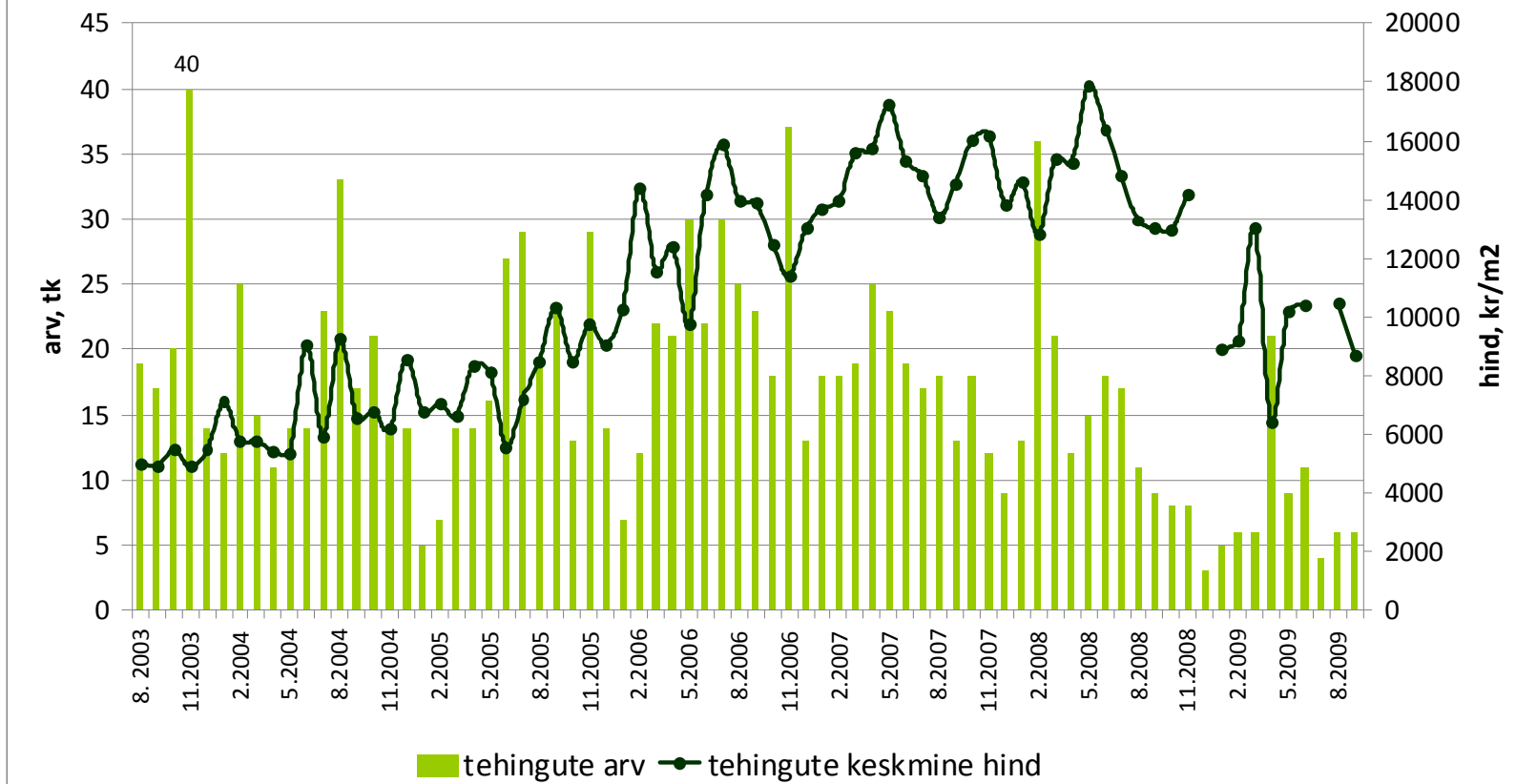
Tehingute arv on langenud 80%,
tehinguhind ca 21%



Allikas: Maa-amet

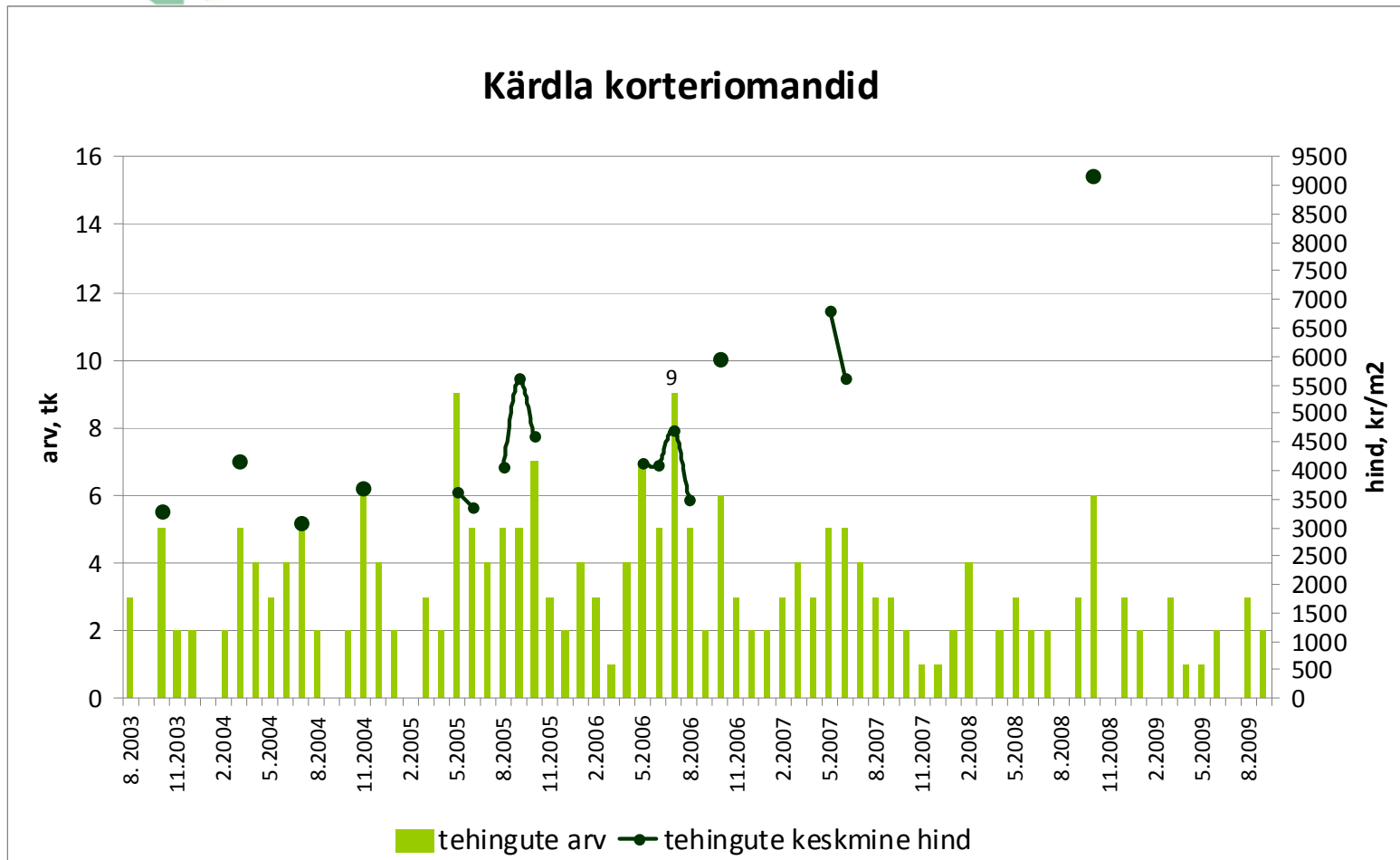
Tehingute arv on langenud 84%,
tehinguhind 52% (september -16,9

Kuussaare korteriomandid



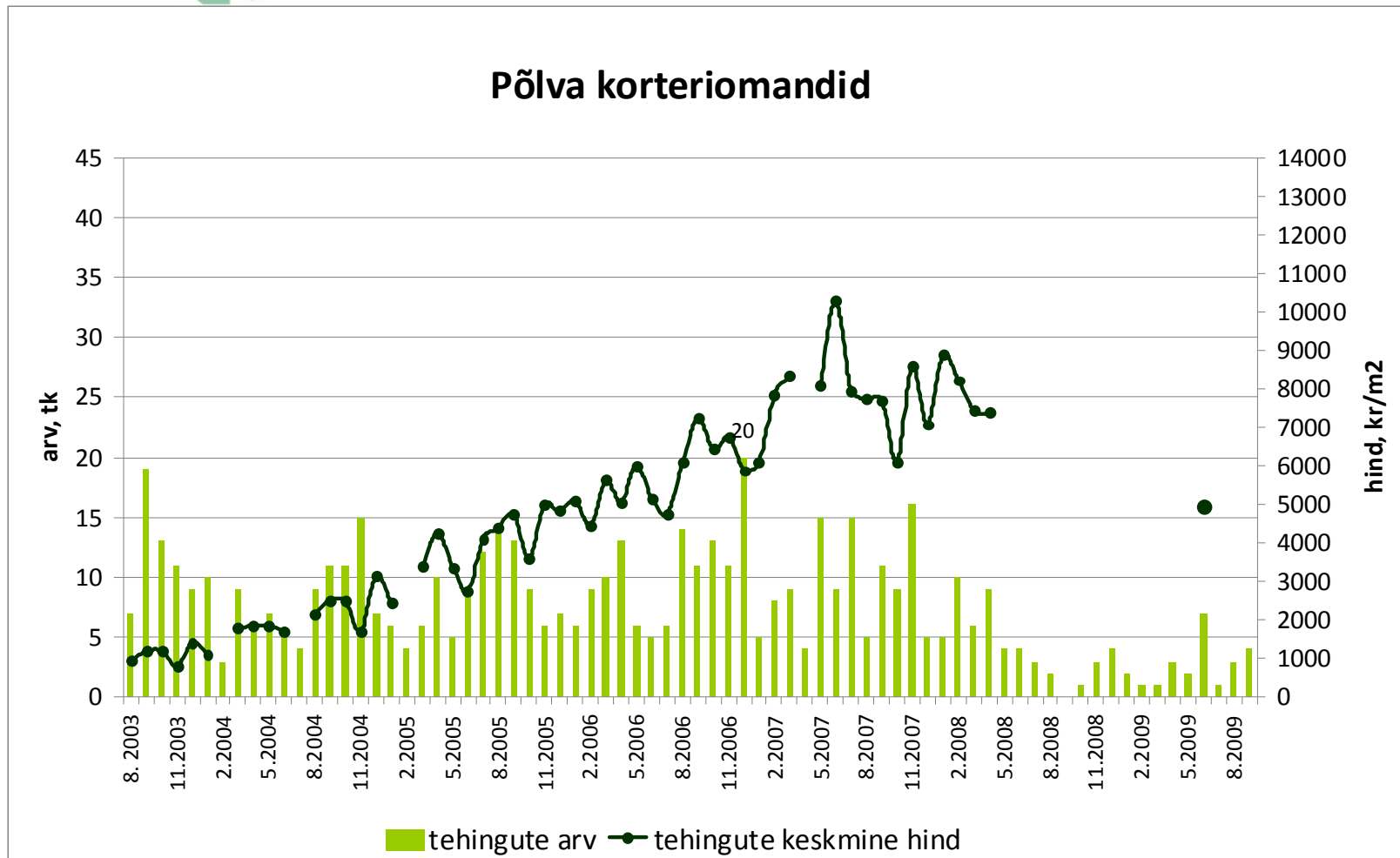
Allikas: Maa-amet

Tehingute arv on langenud 78%



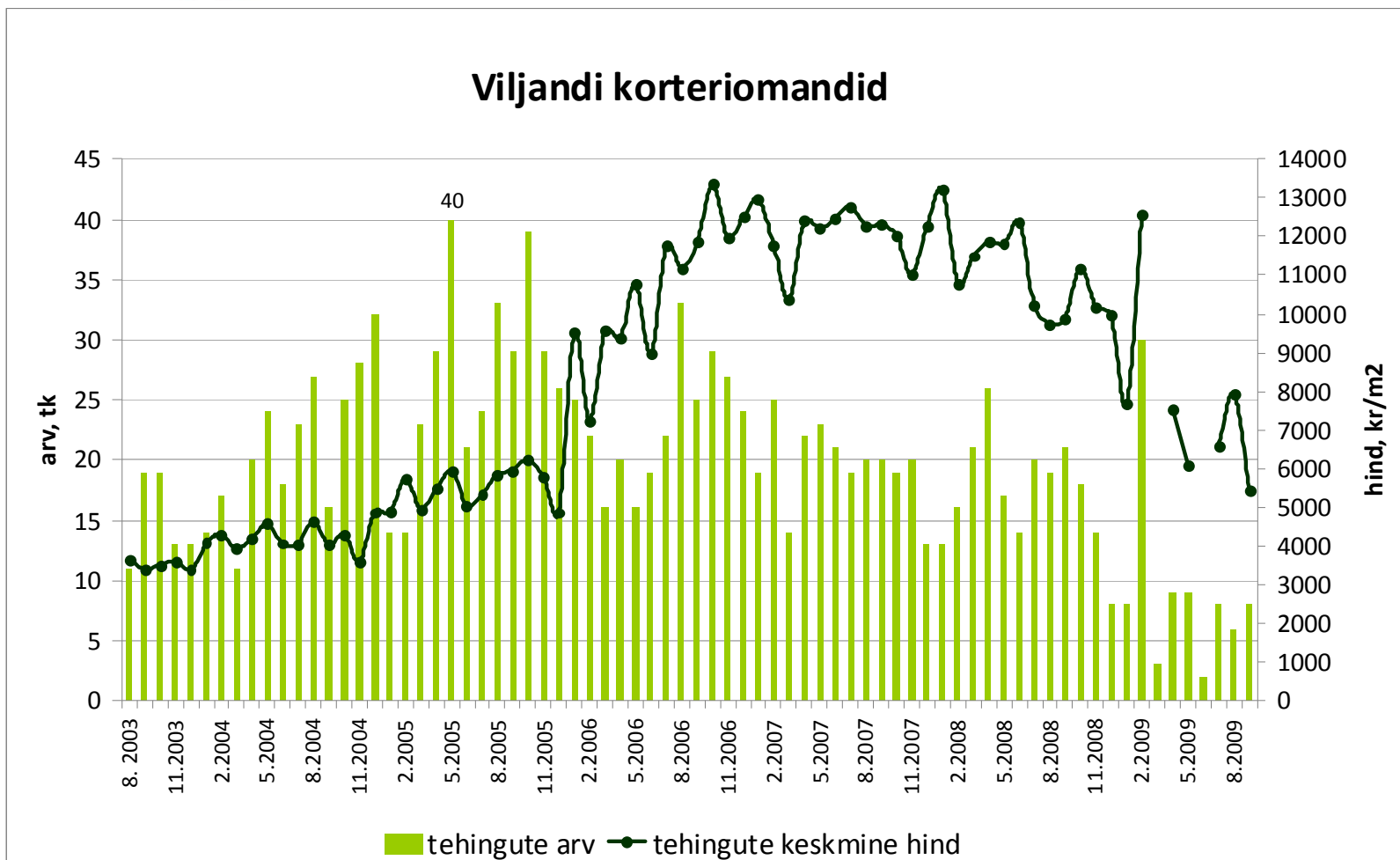
Allikas: Maa-amet

Tehingute arv on langenud 80%,
tehinguhind ca 52%



Allikas: Maa-amet

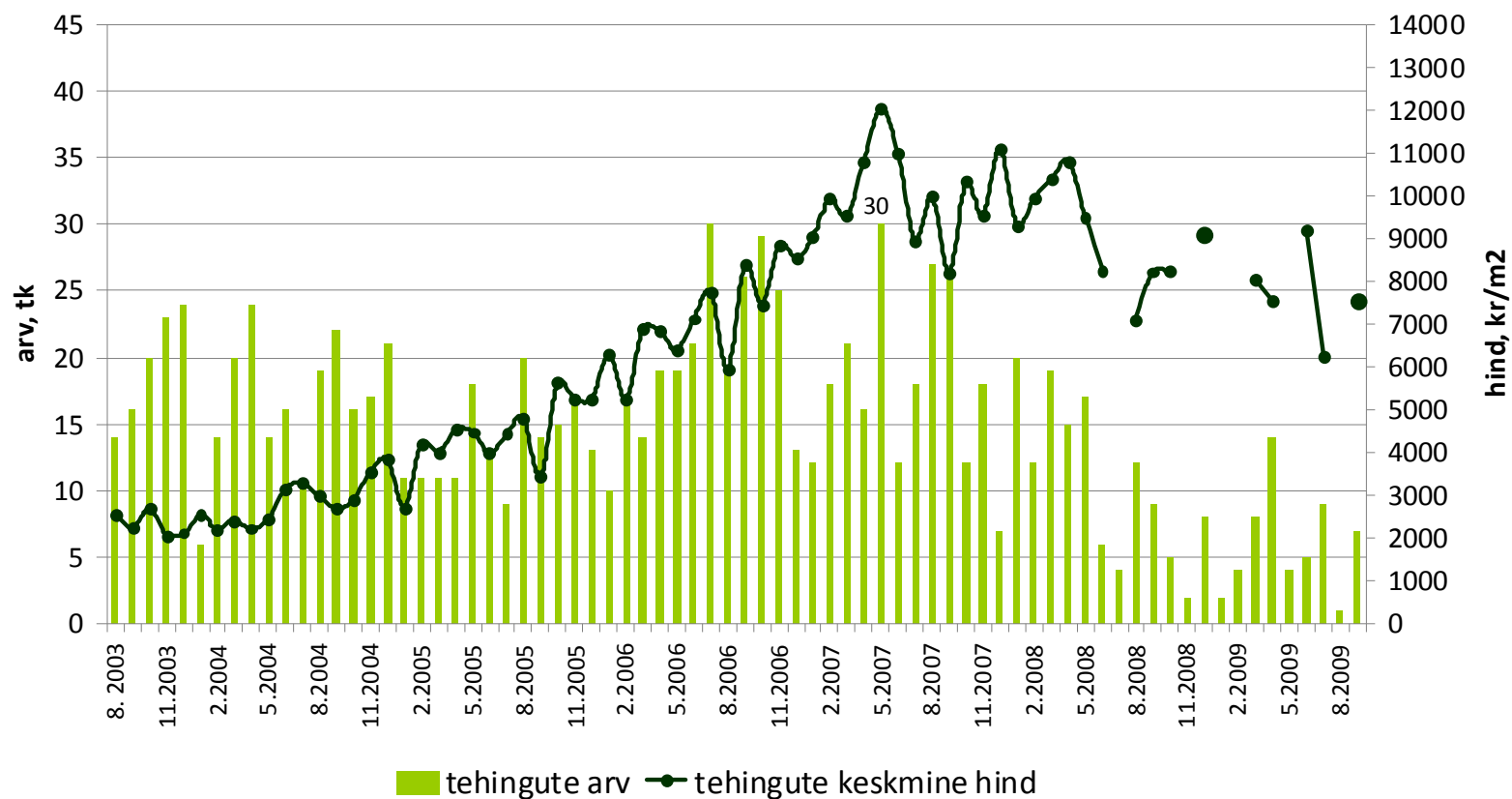
Tehingute arv on langenud 80%,
tehinguhind 59% (september -31,1%)



Allikas: Maa-amet

Tehingute arv on langenud 77%,
tehinguhind 37%

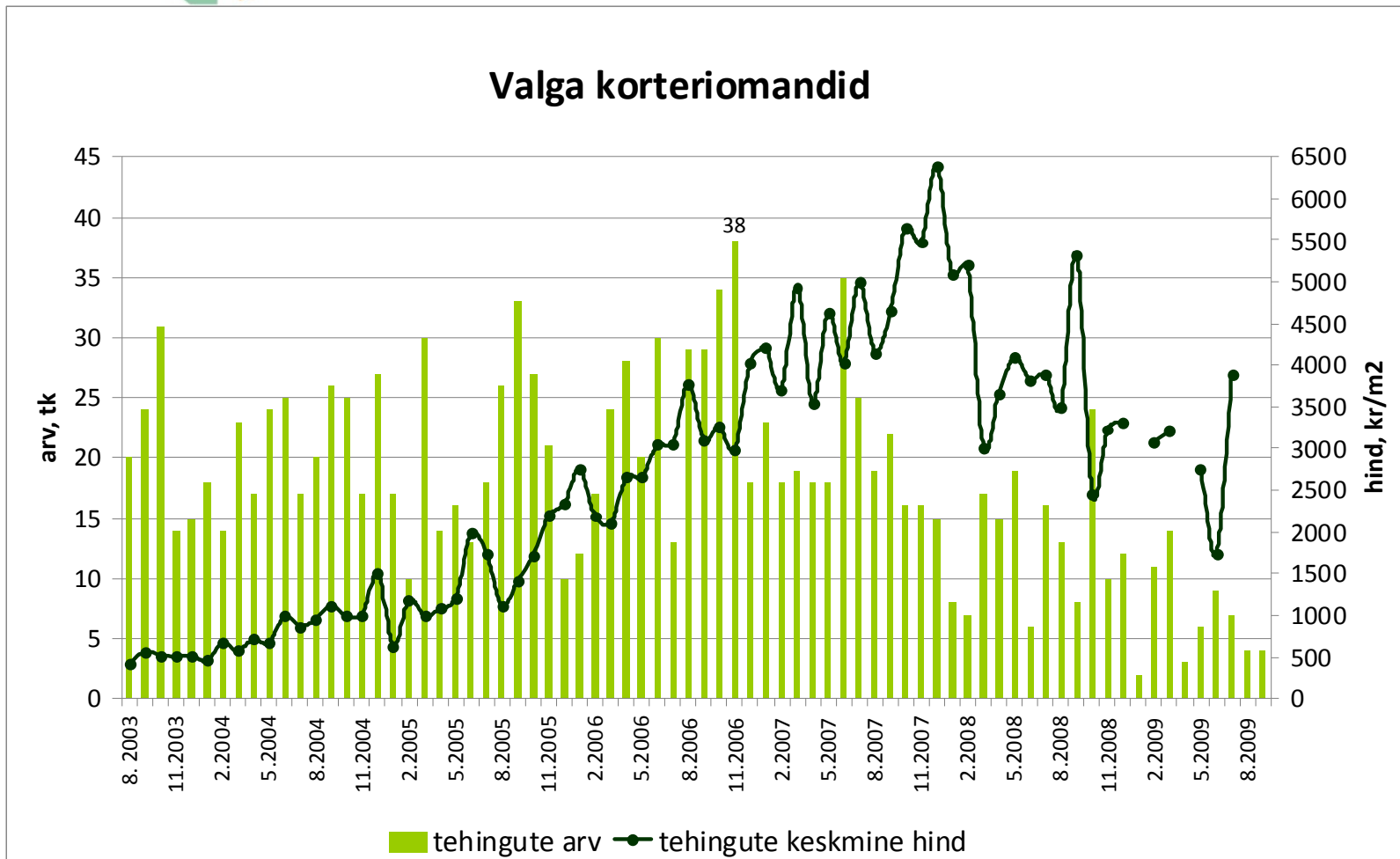
Võru korteriomandid



Allikas: Maa-amet

Tehingute arv on langenud 89%,
tehinguhind 39%

Valga korteriomandid



Allikas: Maa-amet