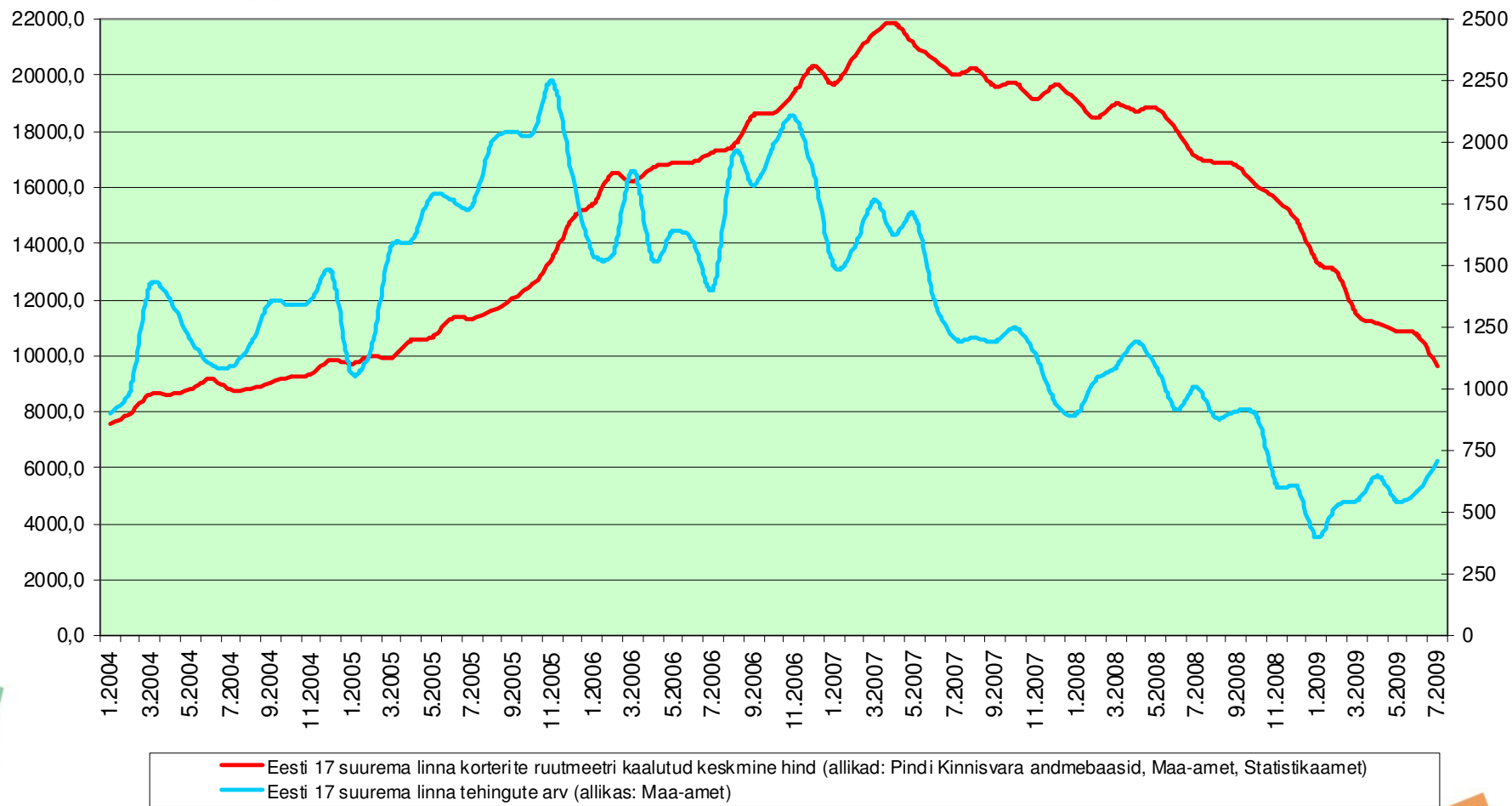


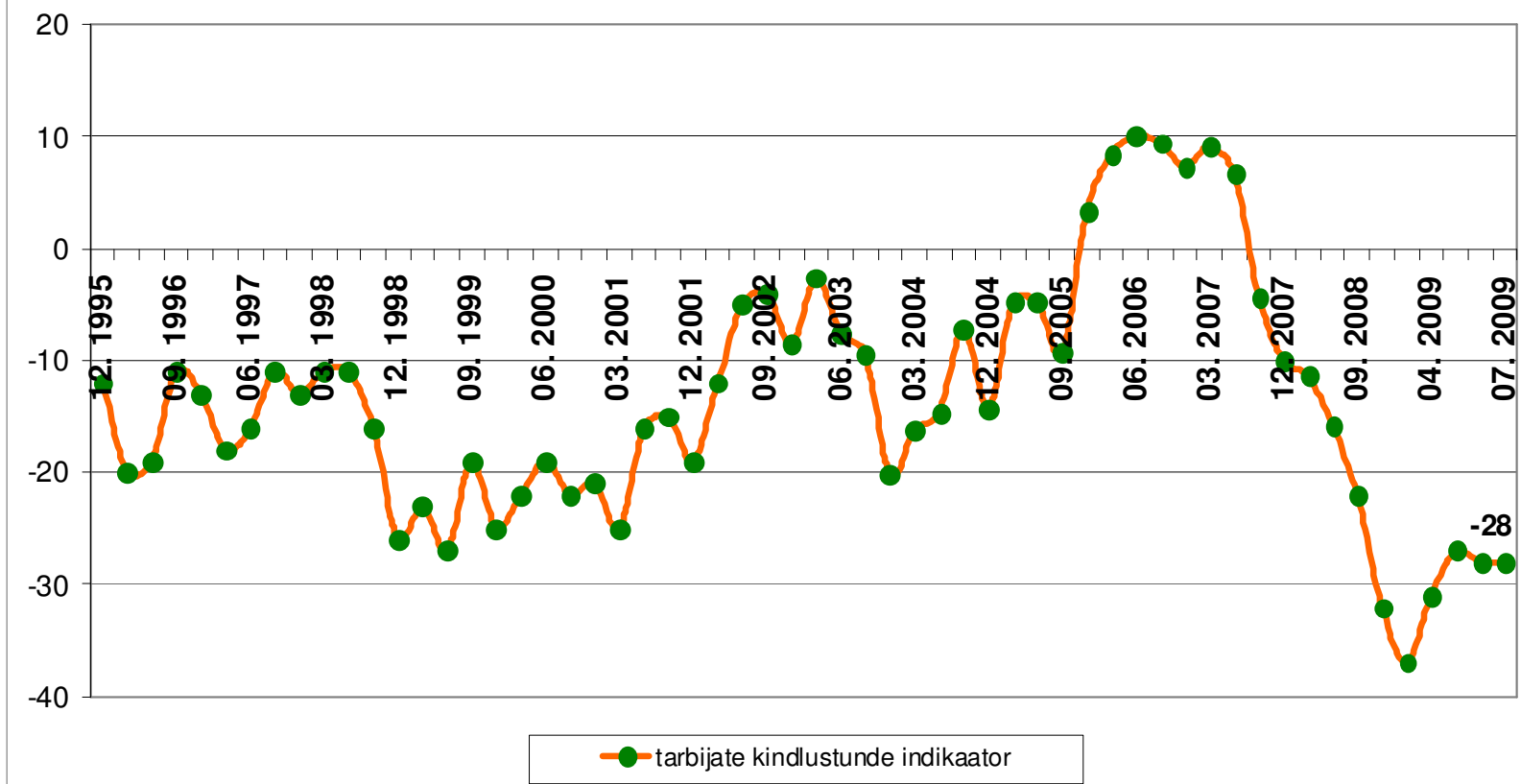


# **KINNISVARATURU AKTIIVSUS JA REGIONAALSED ERIPÄRAD**

## PINDI HINNAINDEKS

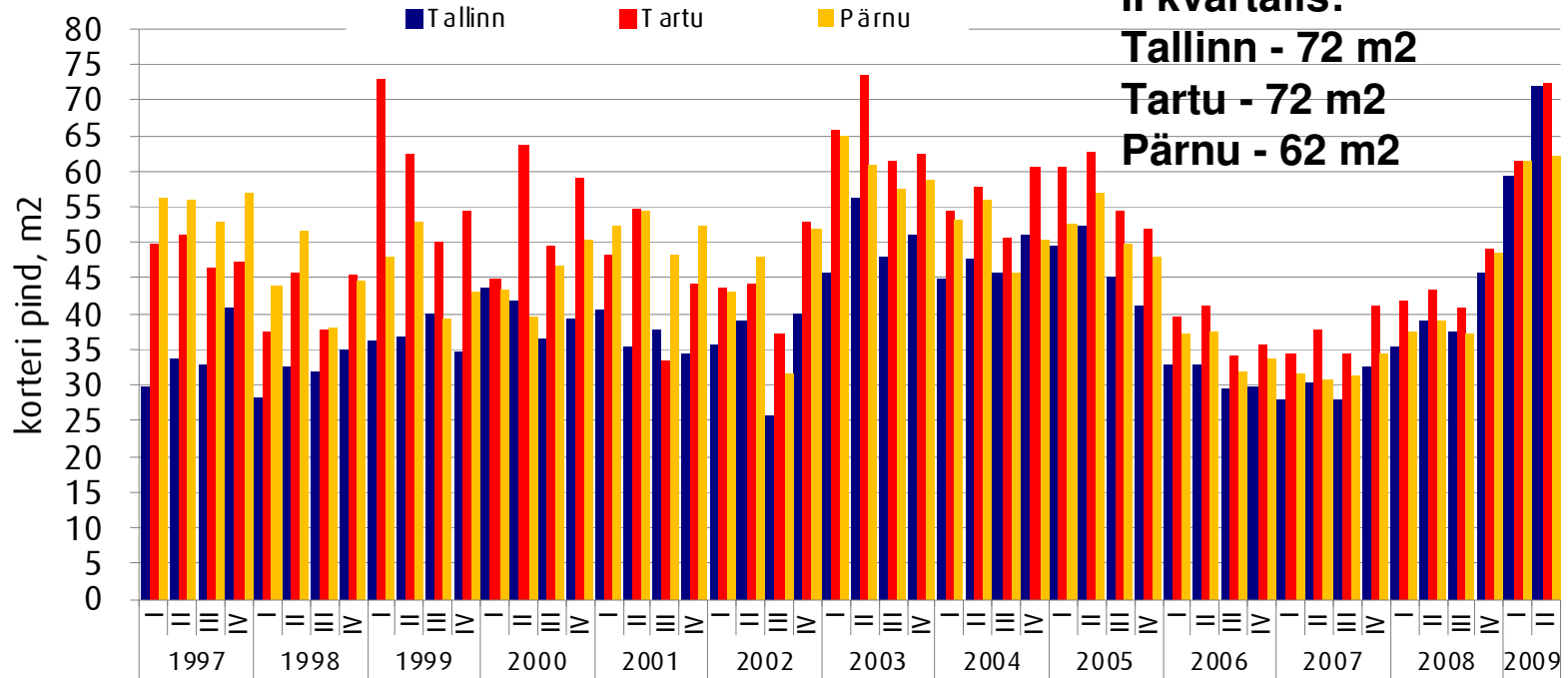


## Tarbijate kindlustunde indikaator

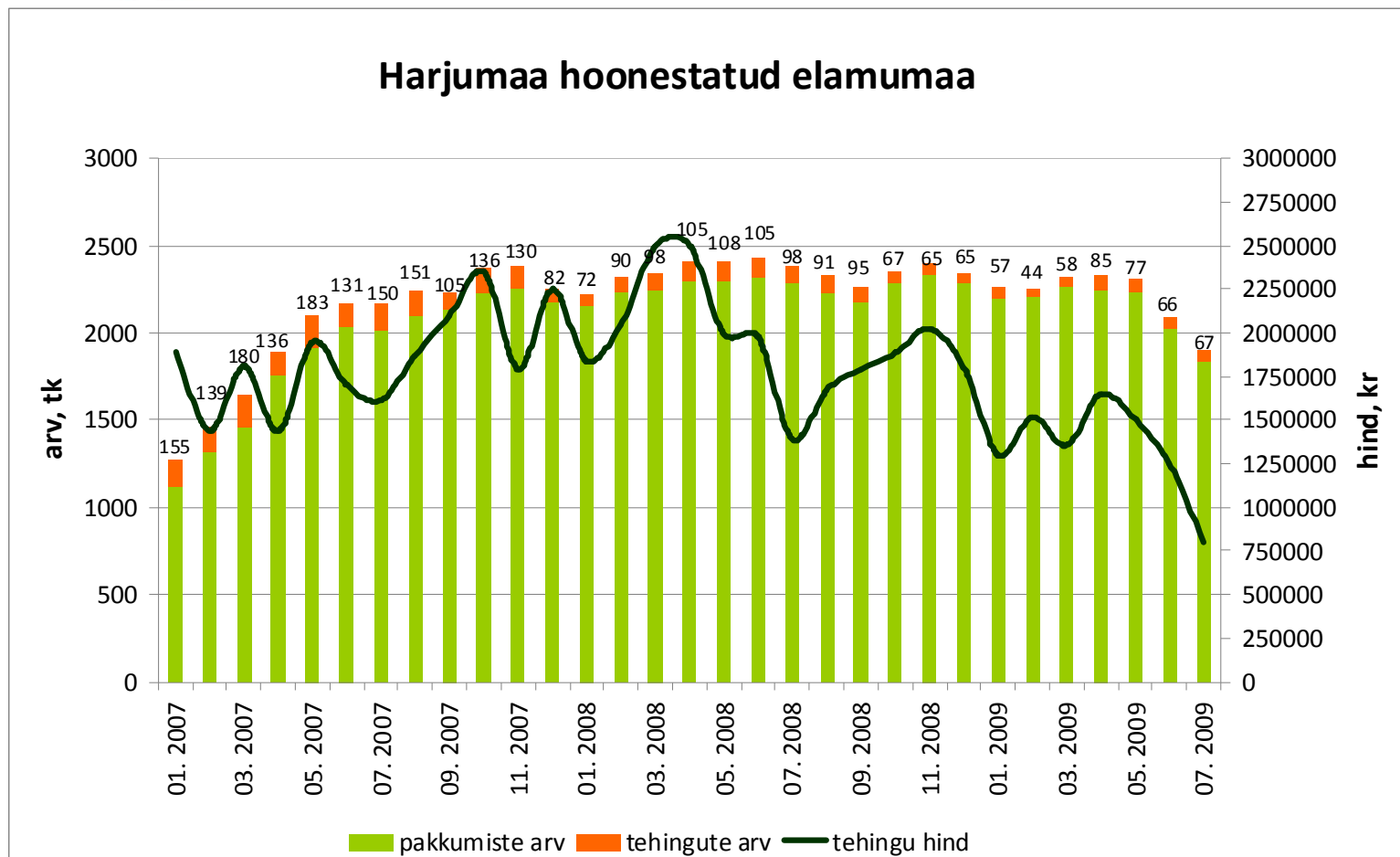


# Kinnisvara ostujõud keskmise palga baasil arvutatud laenuvõime järgi:

Kinnisvara ostujõud keskmise palga baasil arvutatud laenuvõime järgi

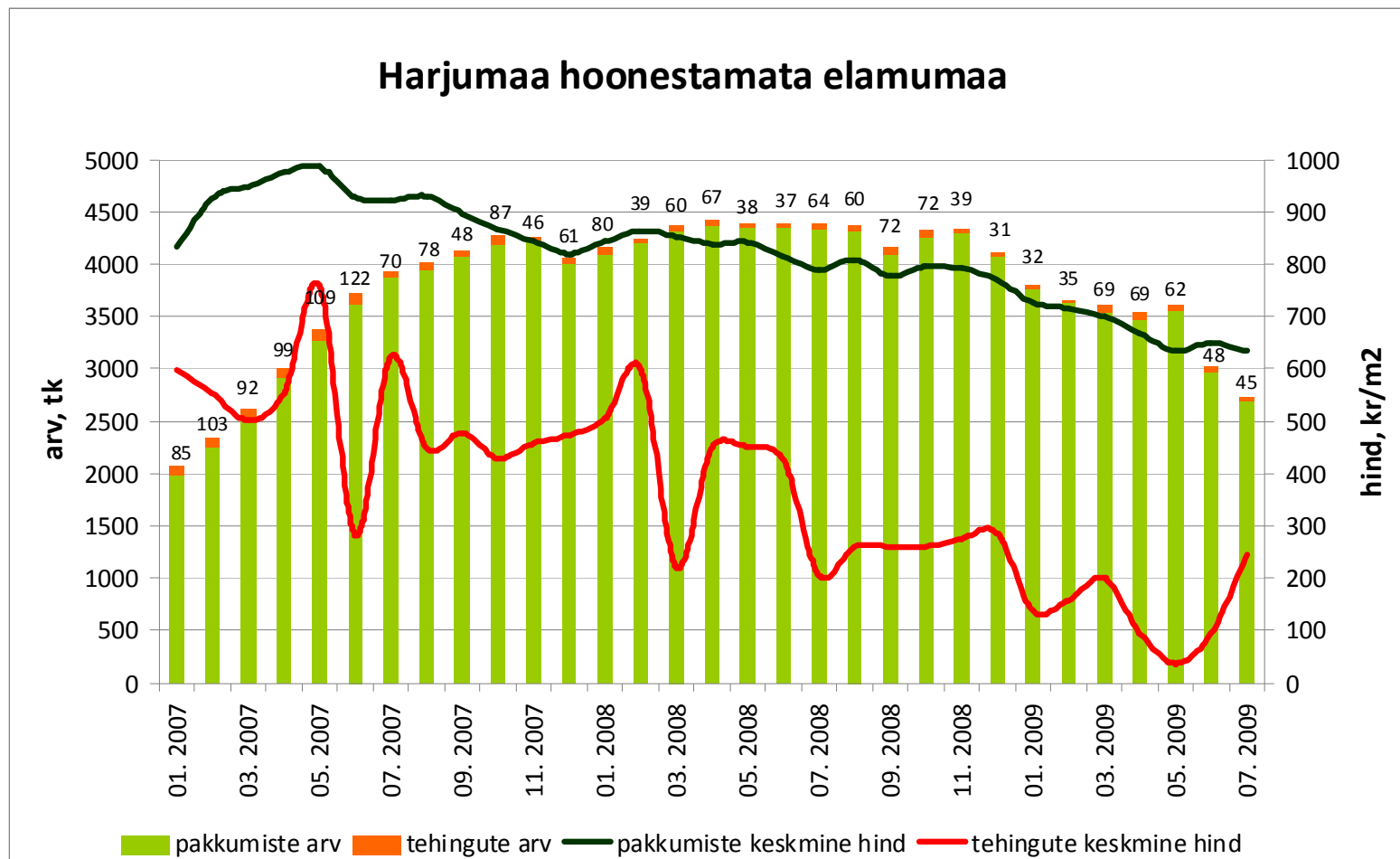


Tehingute arv on langenud 63%,  
tehinguhind 68%



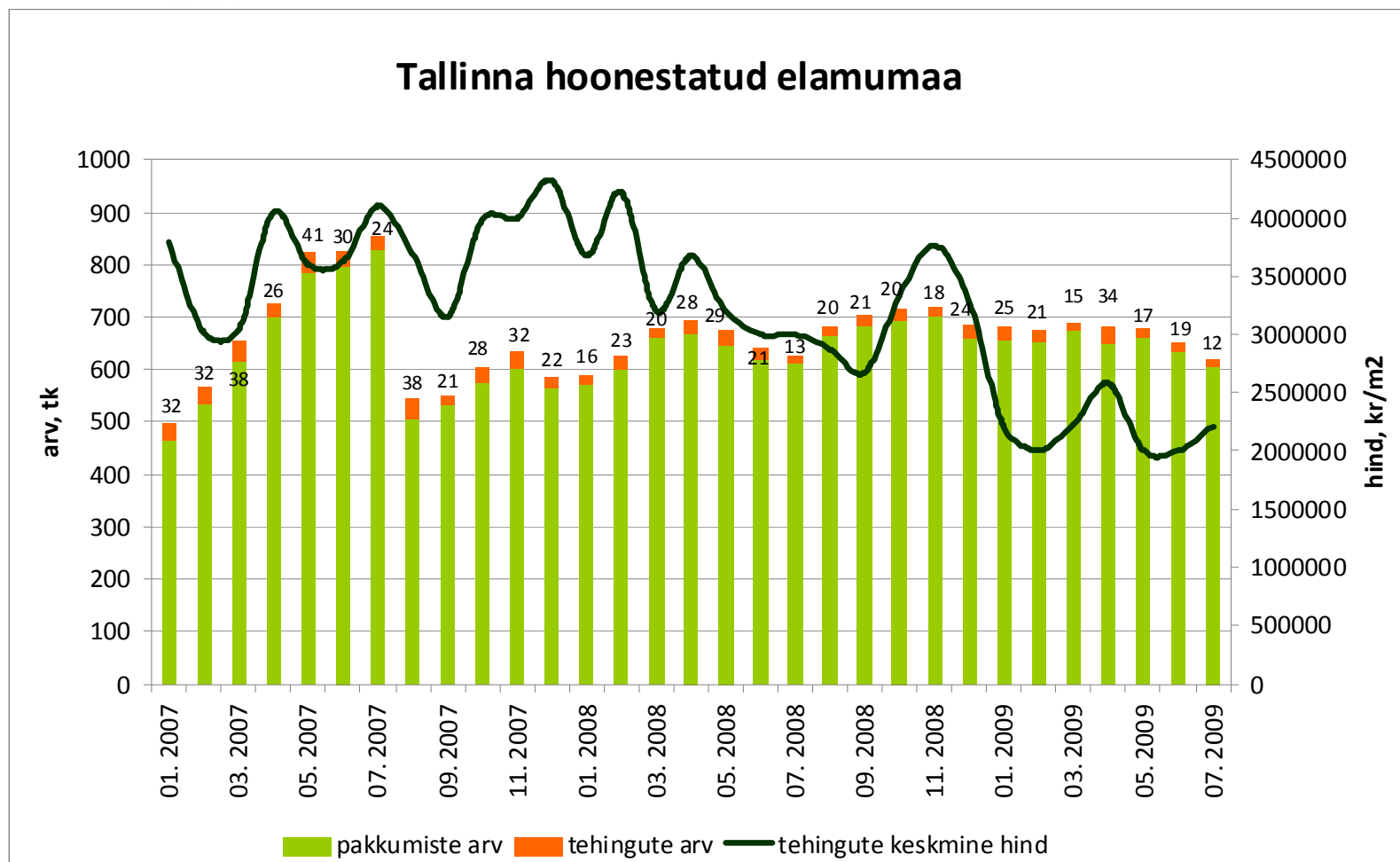
Allikad: Maa-amet, City24

Tehingute arv on langenud 63%,  
tehinguhind 68%



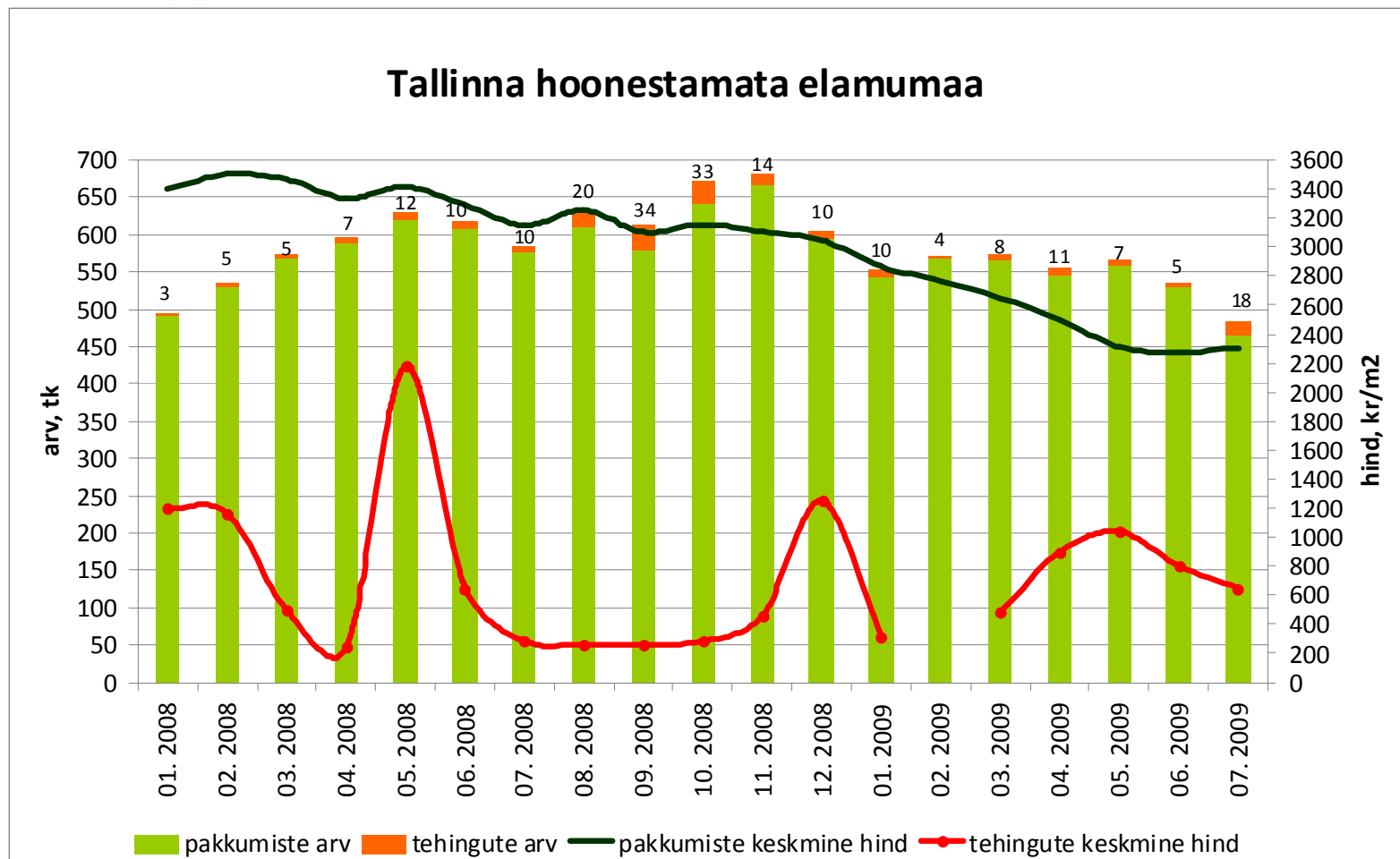
Allikas: Maa-amet, City24

Tehingute arv on 2006.a. märtsist  
langenud 84%, tehinguhind  
2007.a. dets-st 49%



Allikad: Maa-amet, City24

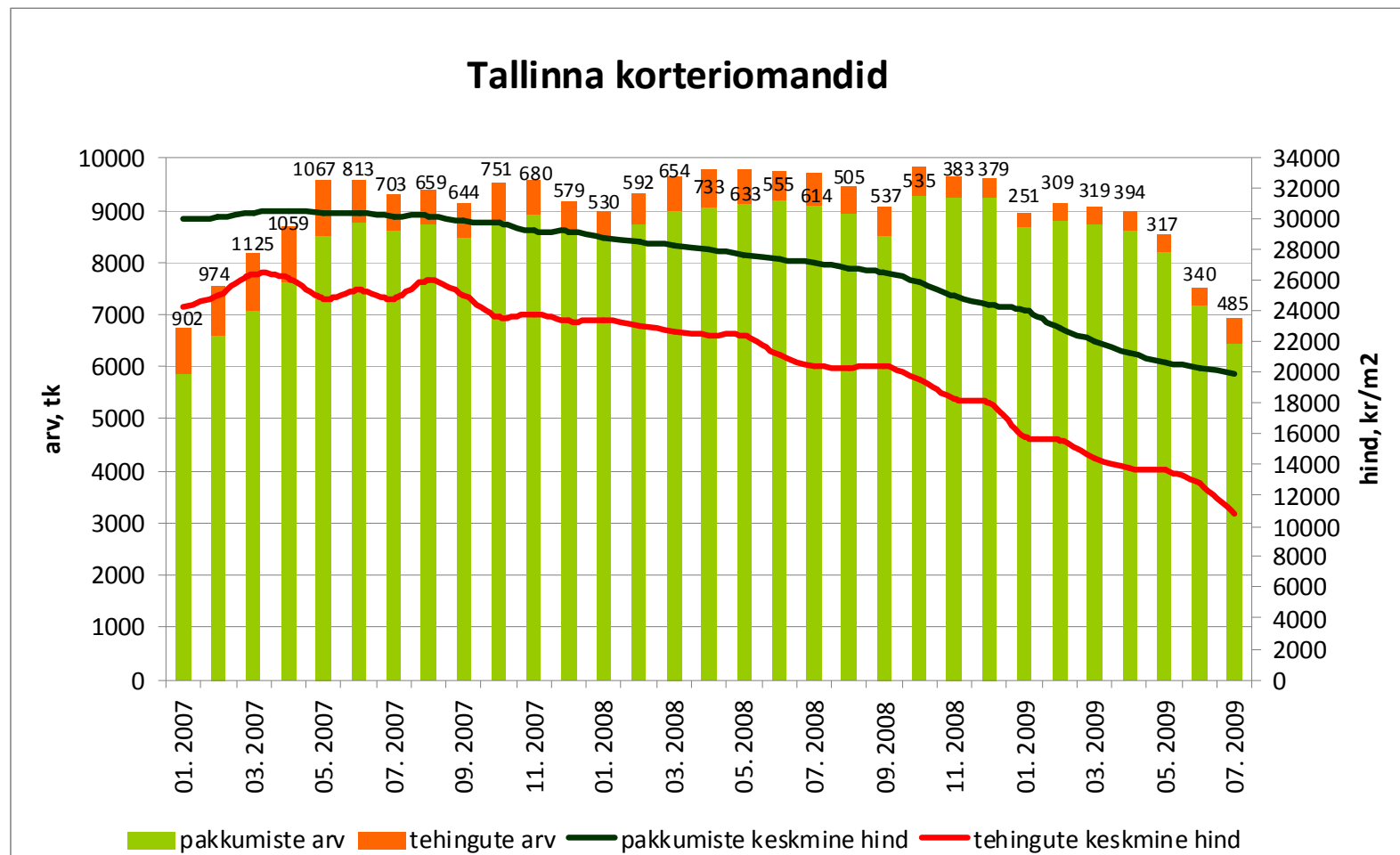
Tehingute arv on 2006.a. maist langenud 33%, tehinguhind 2007.a. juunist 76%



Allikad: Maa-amet, City24

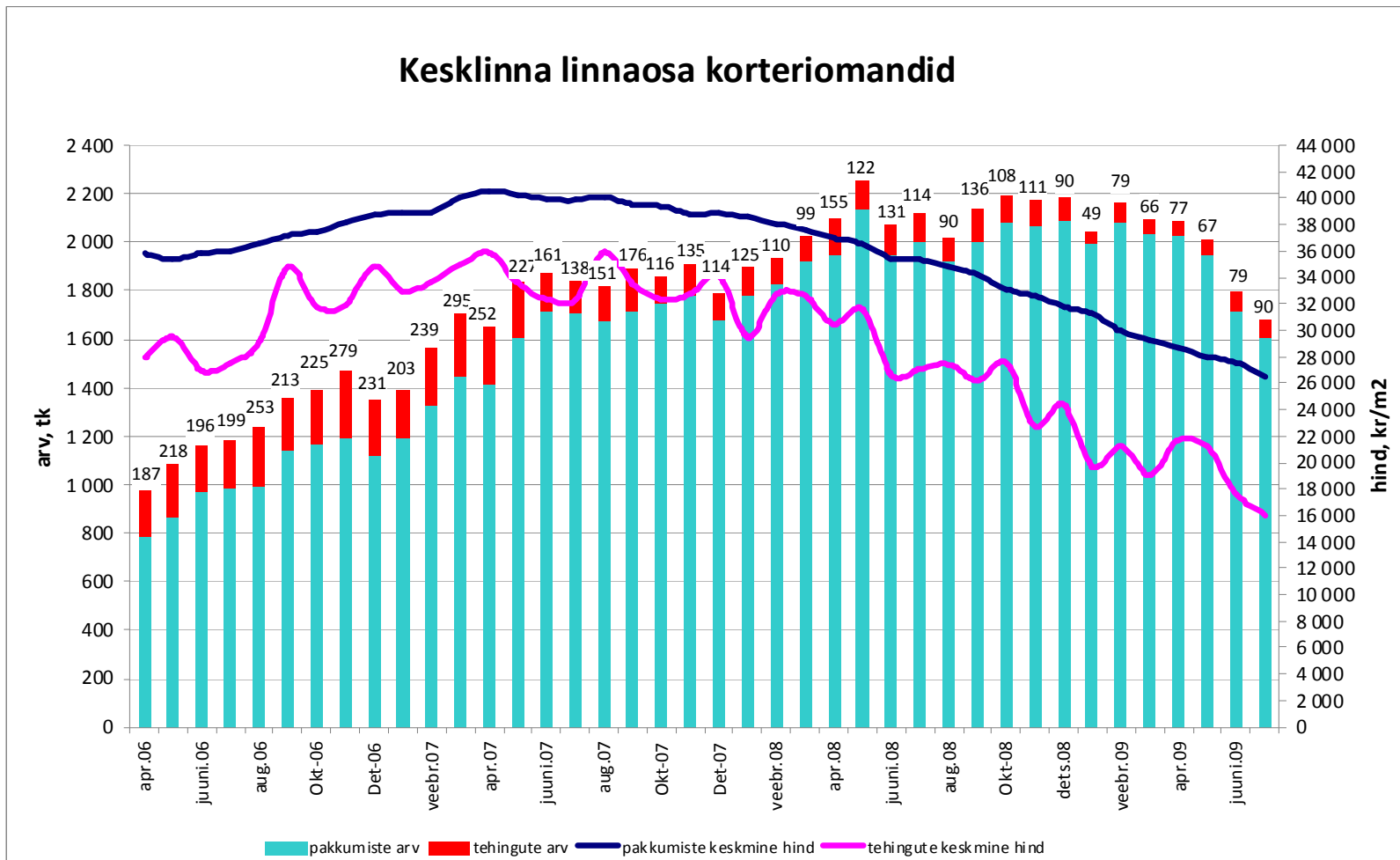


Tehingute arv on langenud 57%,  
tehinguhind 59% (juuli -15%)



Allikad: Maa-amet, City24

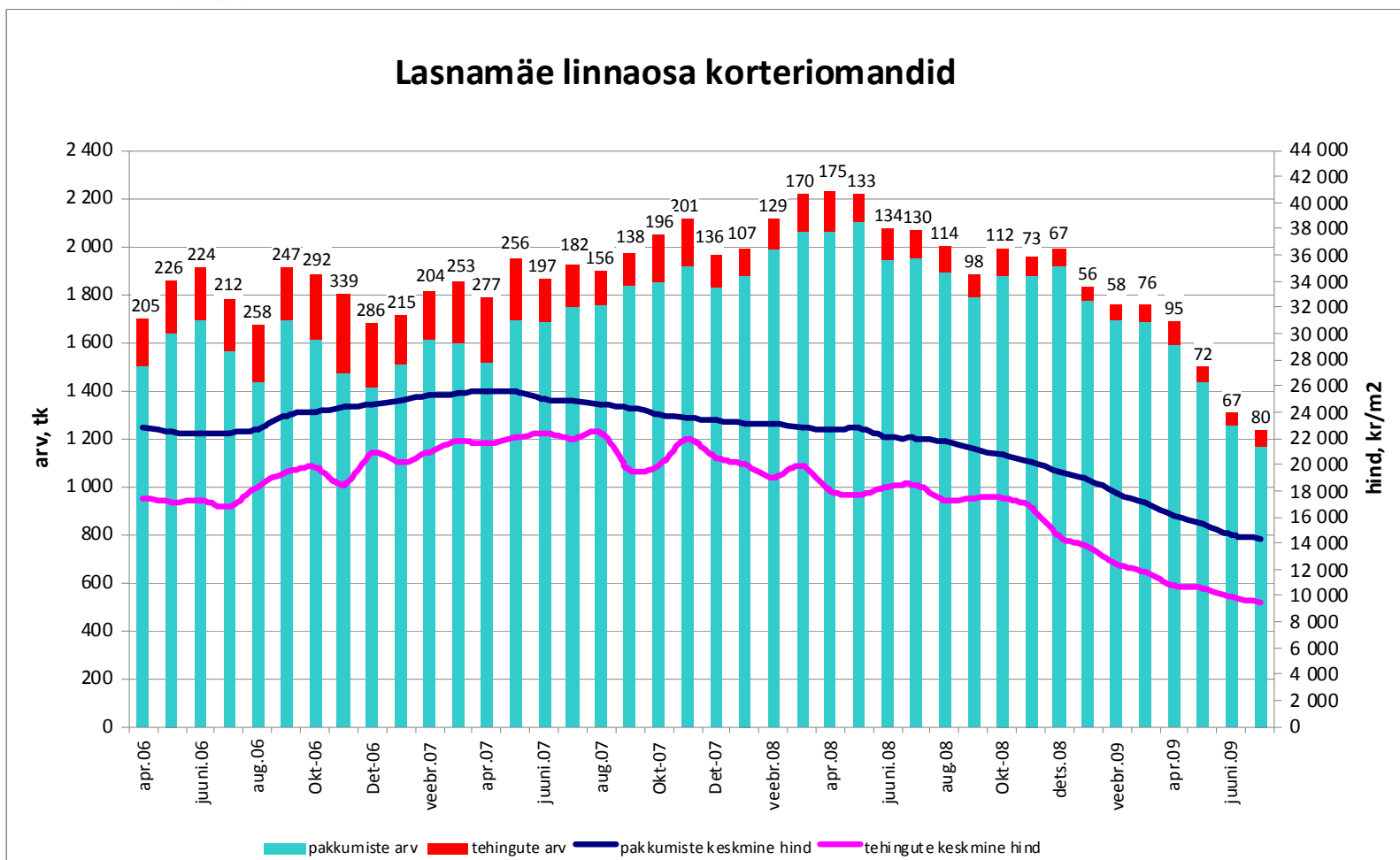
Tehingute arv on langenud 69%,  
tehinguhind 55% (juuli -9,1%)



Allikad: Maa-amet, City24

Tehingute arv on langenud 76%,  
tehinguhind 58% (juuli -3,4%)

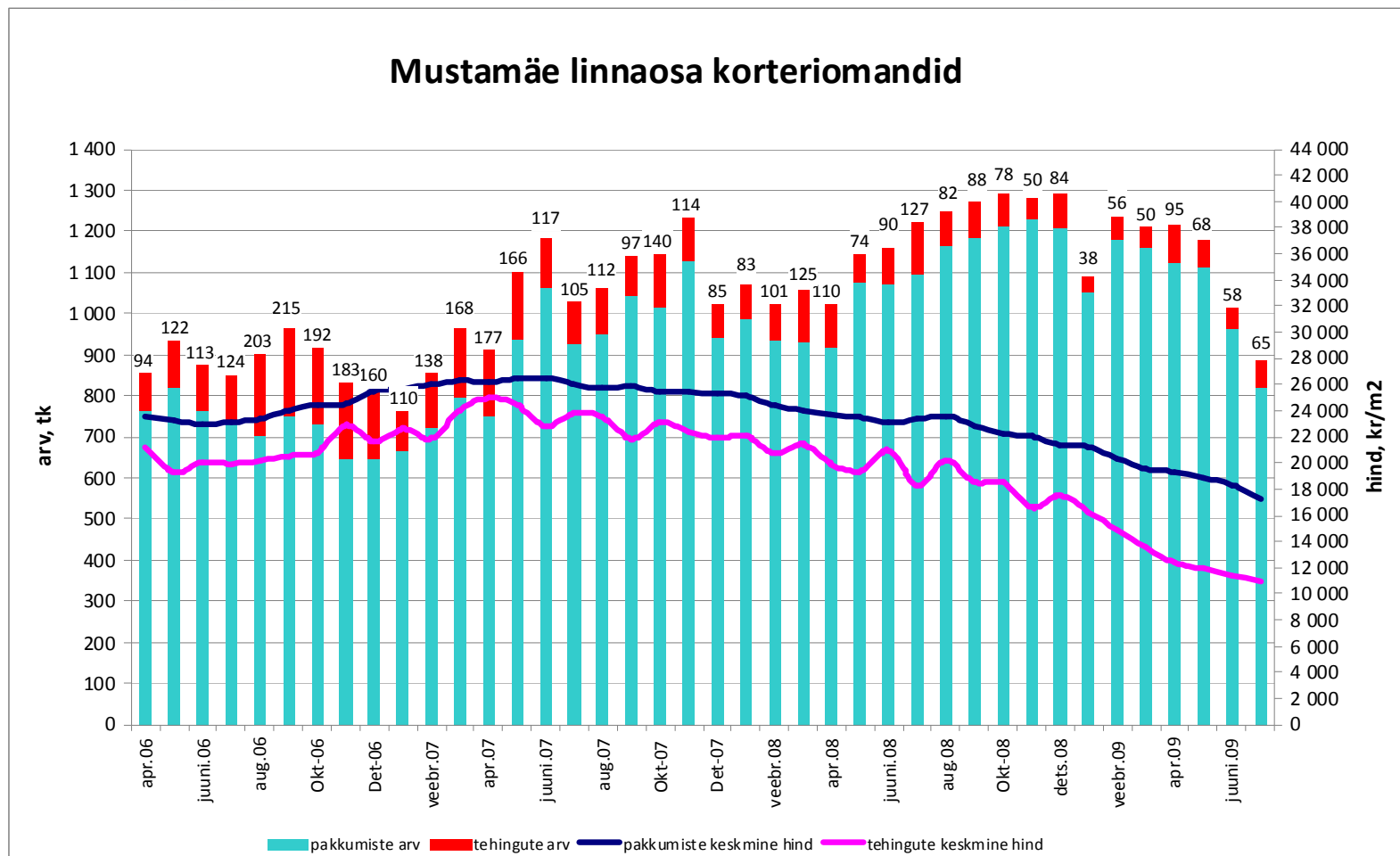
### Lasnamäe linnaosa korteriomandid



Allikad: Maa-amet, City24

Tehingute arv on langenud 70%,  
tehinguhind 56% (juuli -4%)

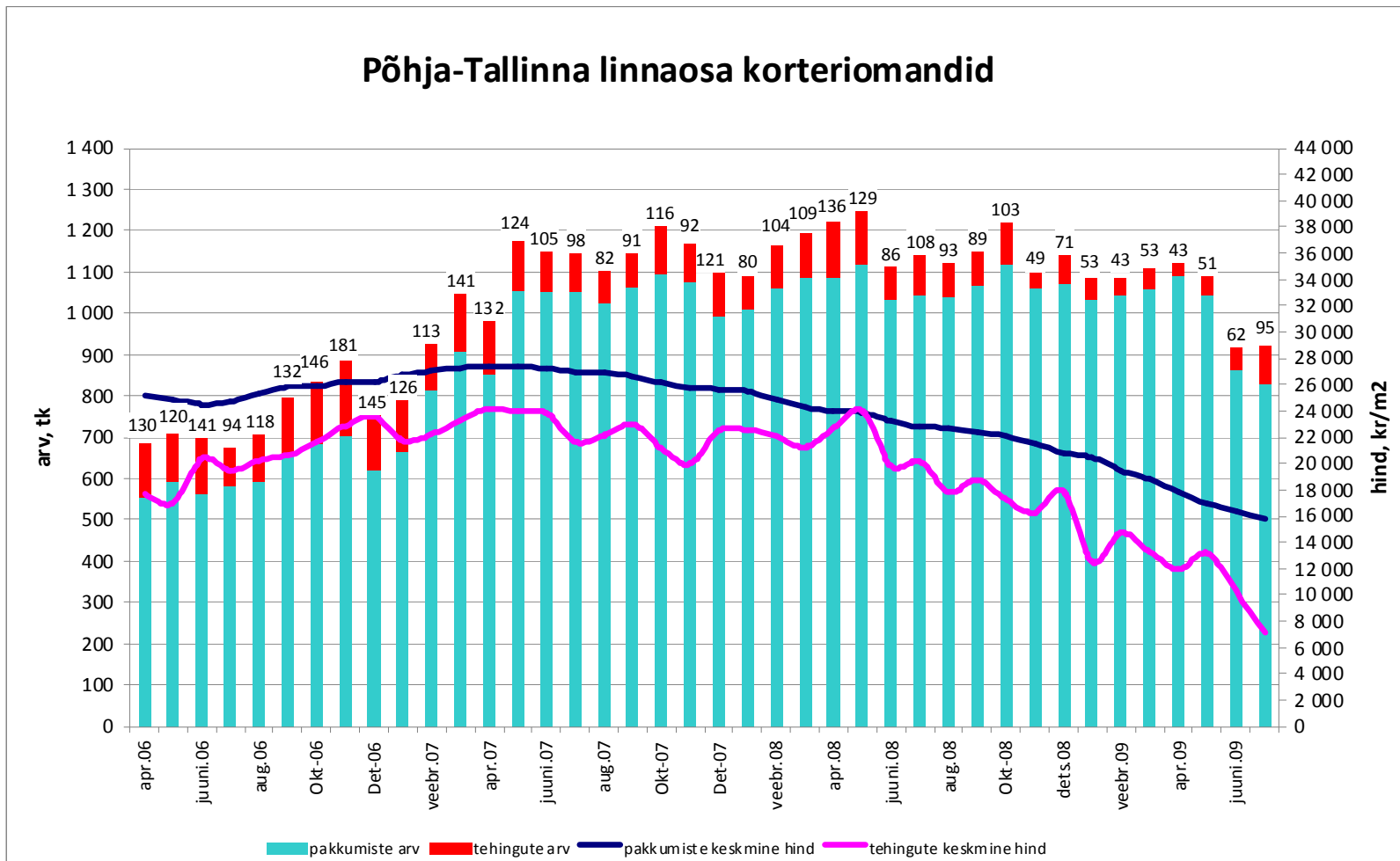
### Mustamäe linnaosa korteriomandid



Allikad: Maa-amet, City24

Tehingute arv on langenud 48%,  
tehinguhind 71% (juuli -31,5%)

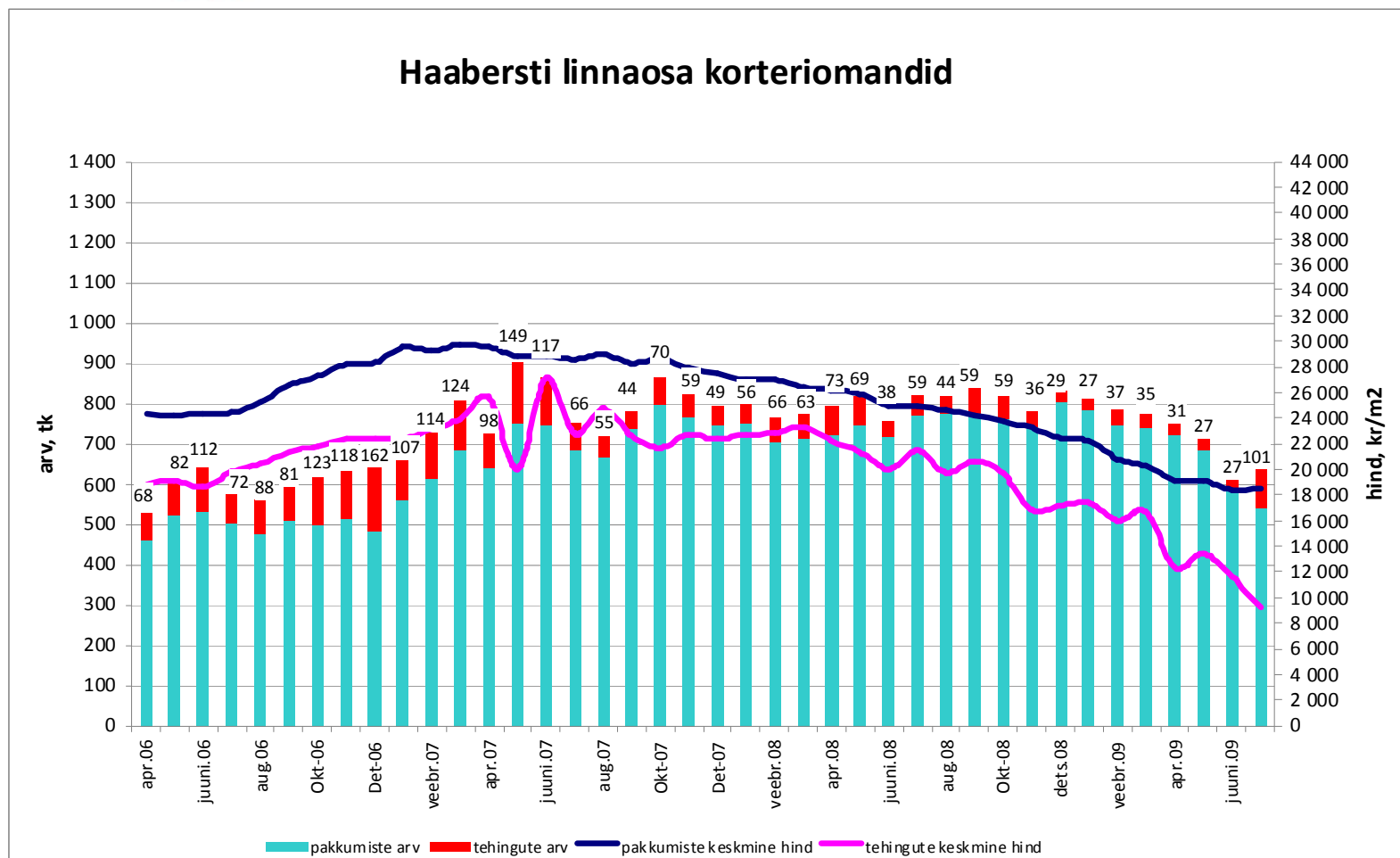
### Põhja-Tallinna linnaosa korteriomandid



Allikad: Maa-amet, City24

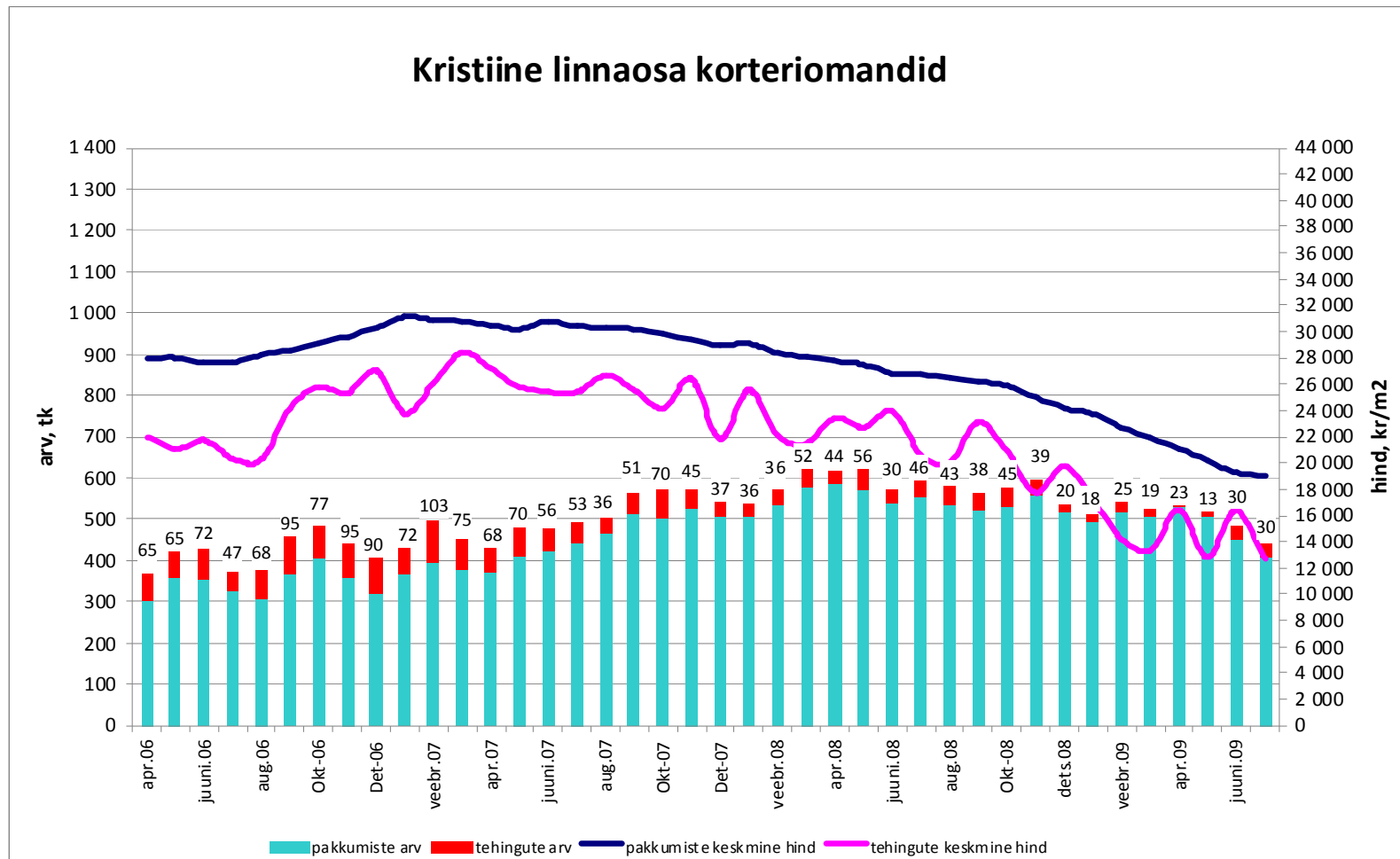


Tehingute arv on langenud 38%,  
tehinguhind 66% (juuli -21%)



Allikad: Maa-amet, City24

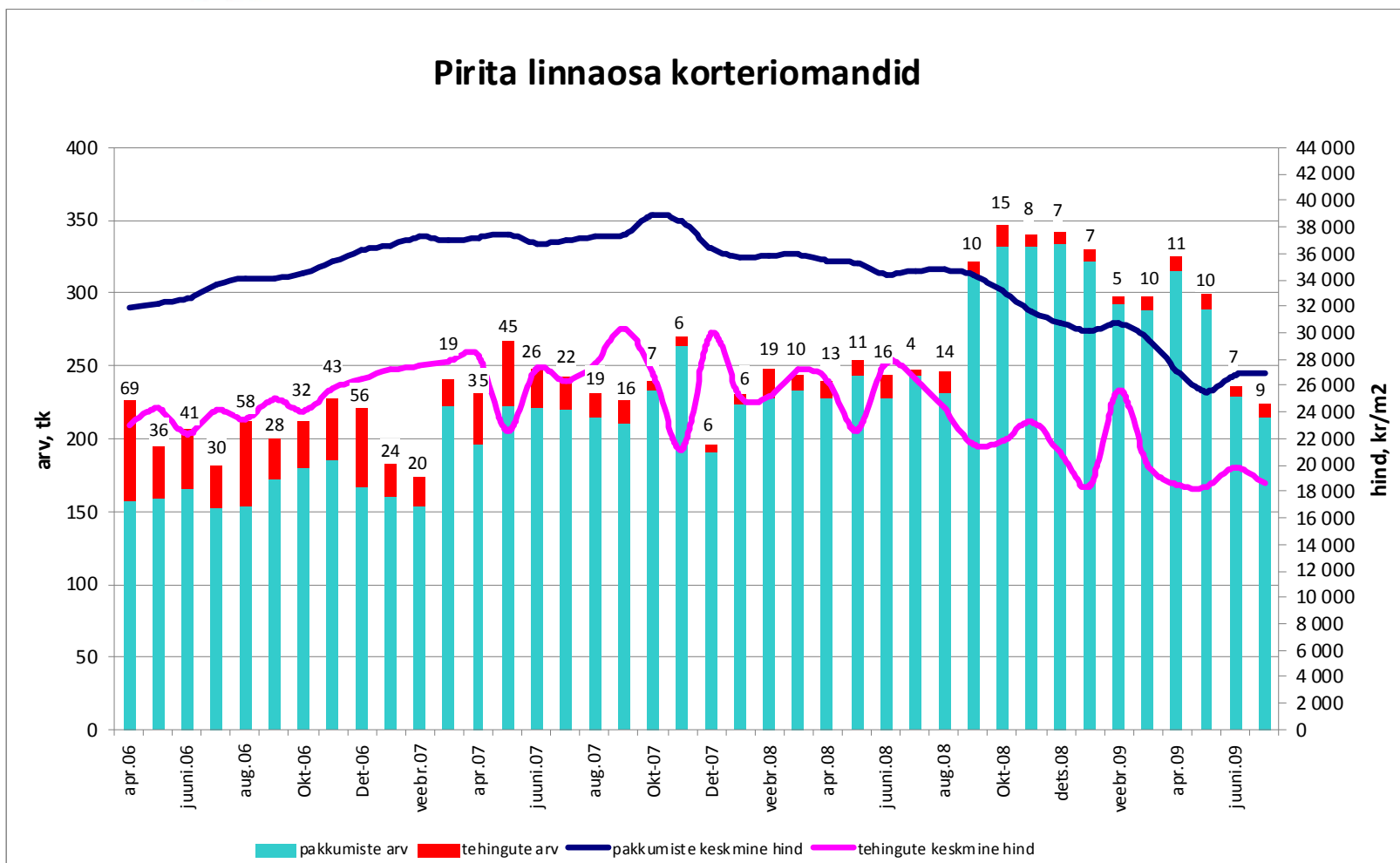
Tehingute arv on langenud 71%,  
tehinguhind 55% (juuli -22,8%)



Allikad: Maa-amet, City24



Tehingute arv on langenud 87%,  
tehinguhind 39% (juuli -6,3%)

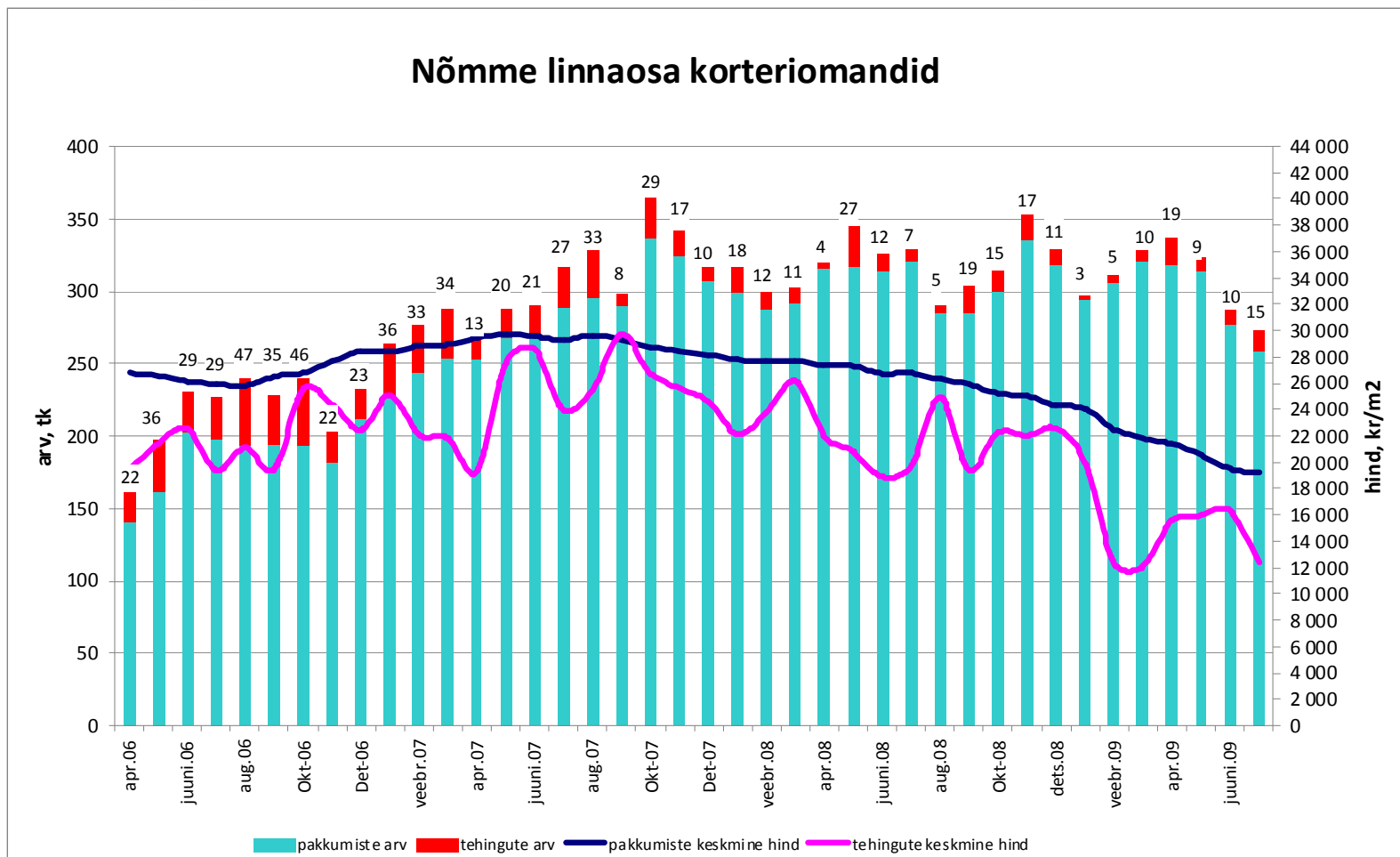


Allikad: Maa-amet, City24



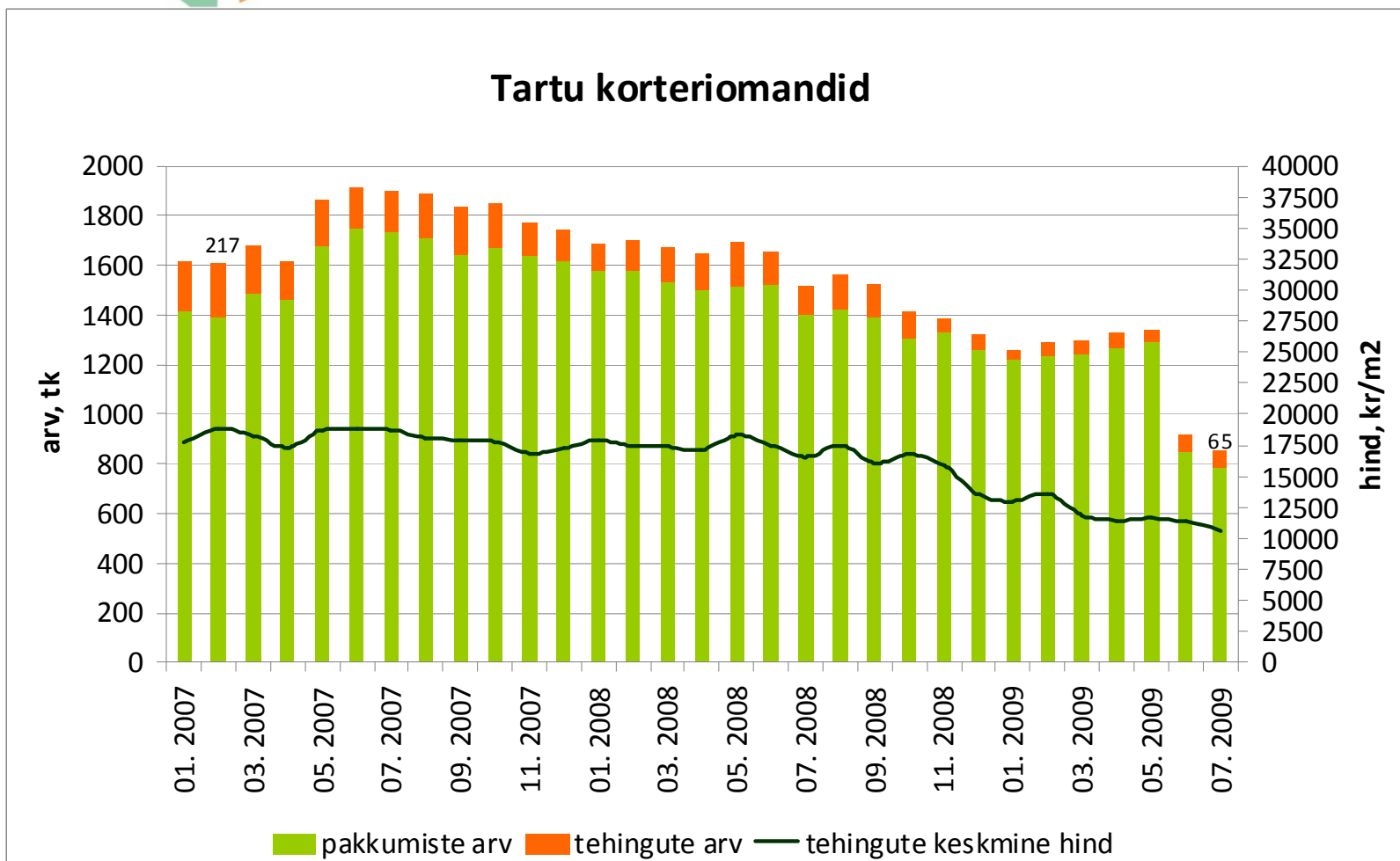
Tehingute arv on langenud 68%,  
tehinguhind 58% (juuli -23,8)

### Nõmme linnaosa korteriomandid



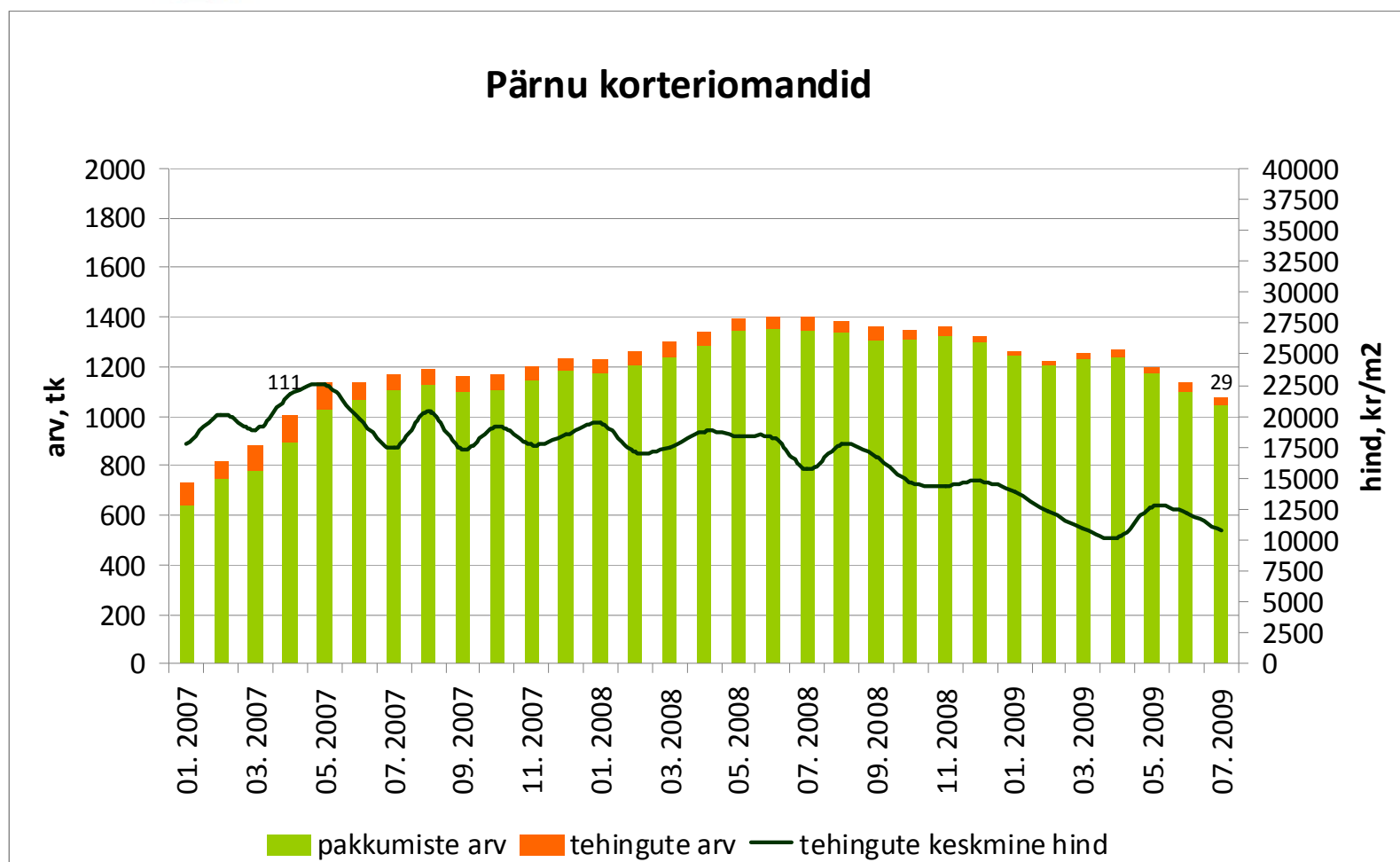
Allikad: Maa-amet, City24

Tehingute arv on langenud 70%,  
tehinguhind 44% (juuli -6,1%)



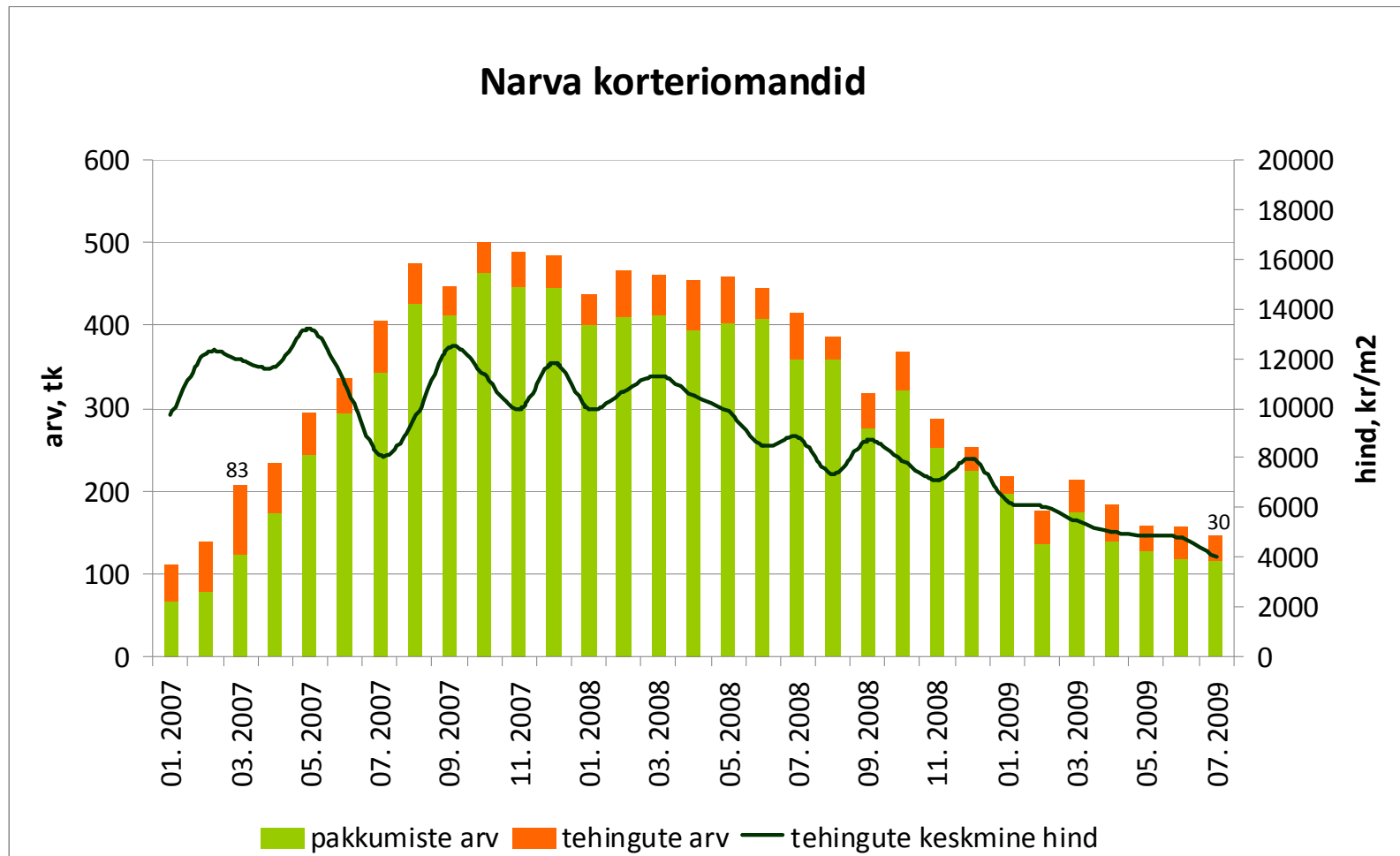
Allikad: Maa-amet, City24

Tehingute arv on langenud 74%,  
tehinguhind 52% (juuli -11,7%)



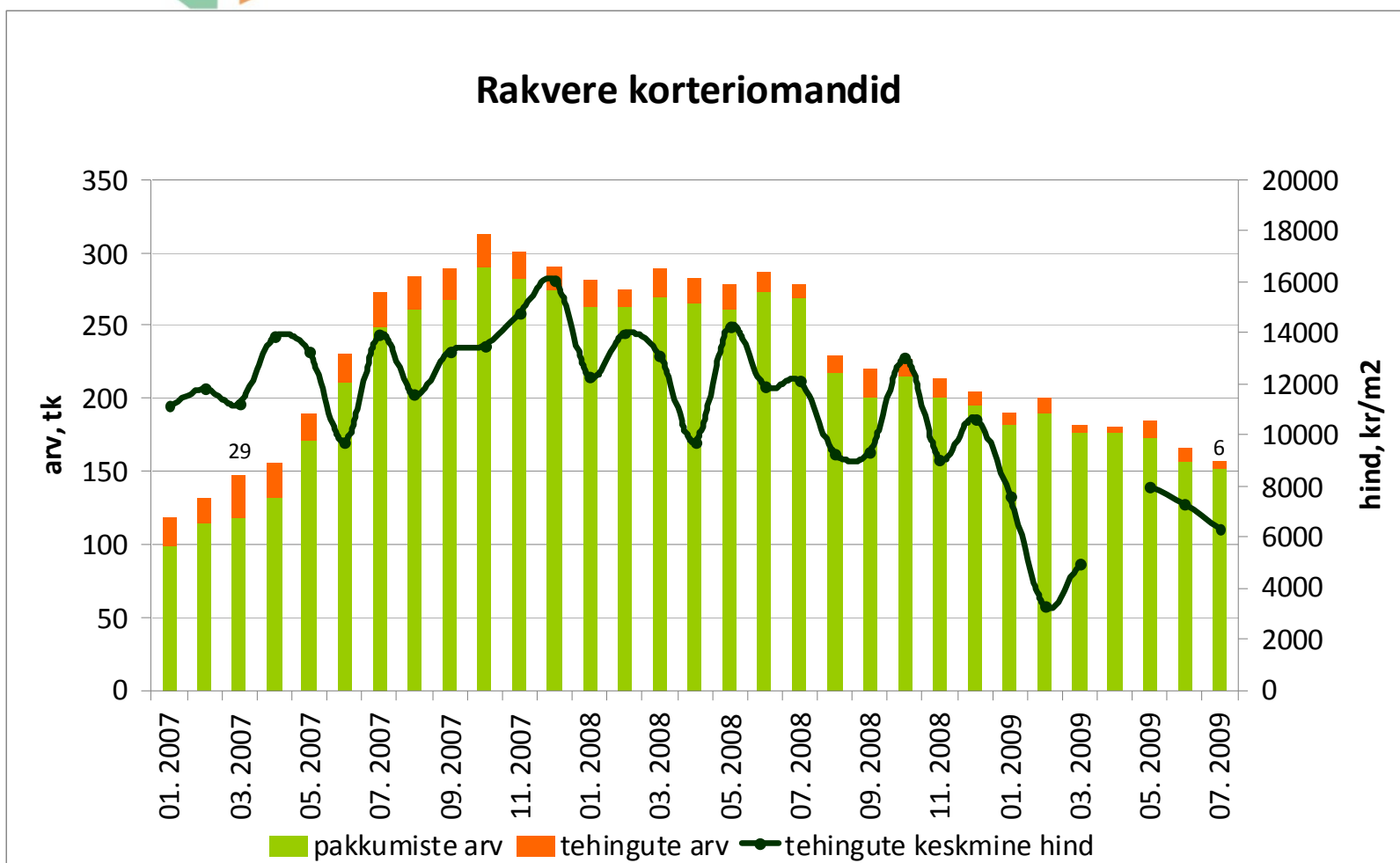
Allikad: Maa-amet, City24

Tehingute arv on langenud 64%,  
tehinguhind 69% (juuli -15,9%)



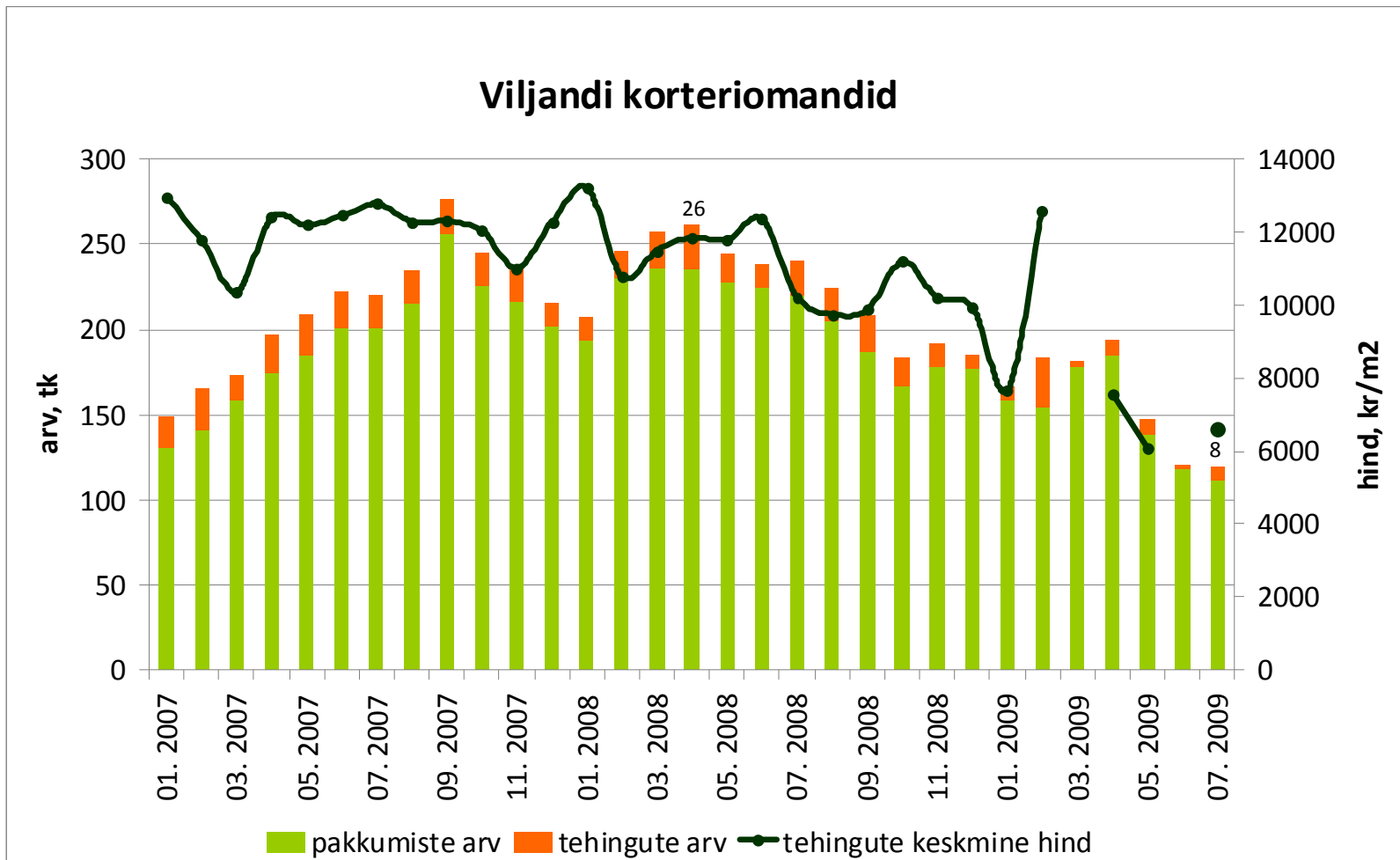
Allikad: Maa-amet, City24

Tehingute arv on langenud 79%,  
tehinguhind 61% (juuli -12,8%)



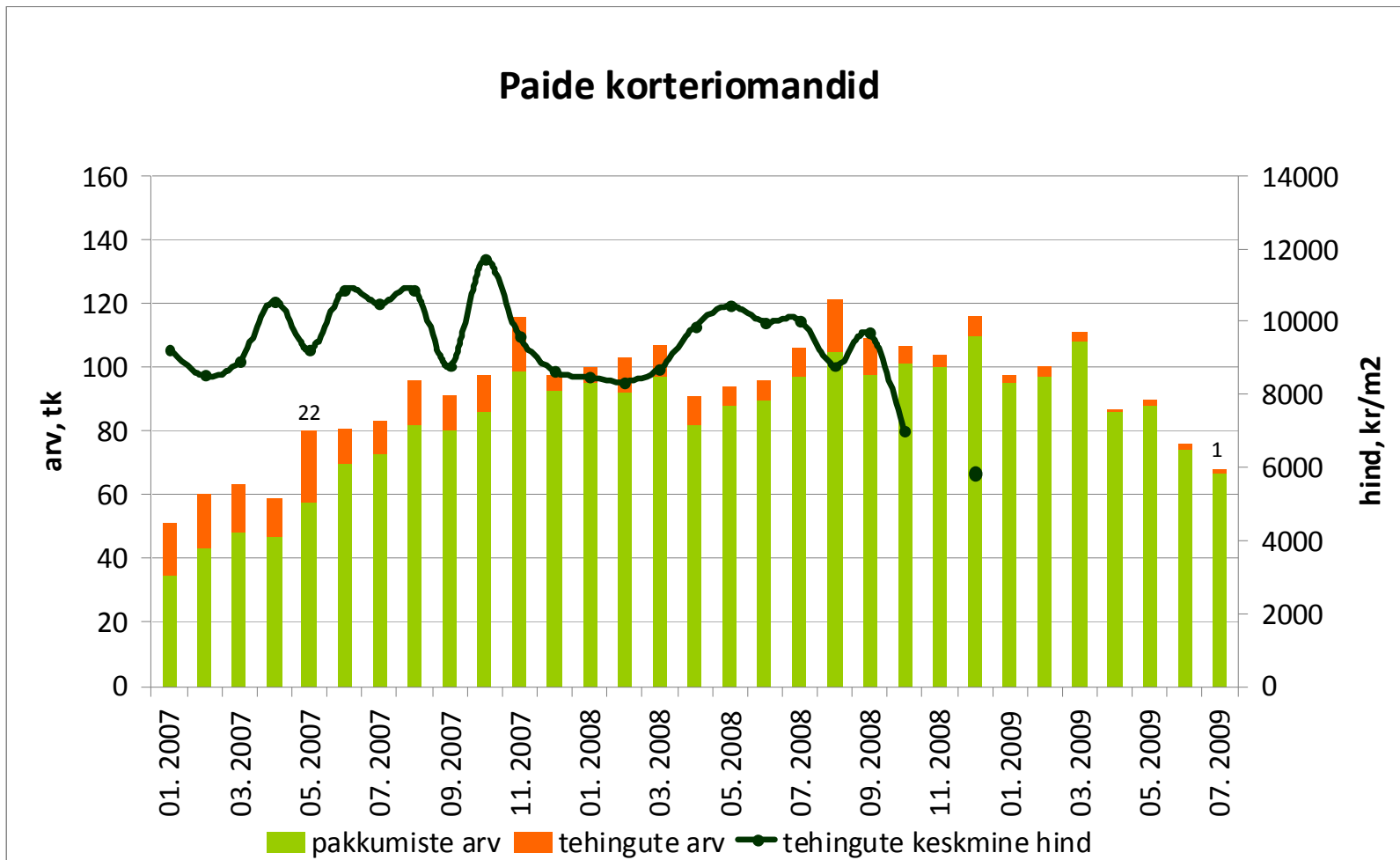
Allikad: Maa-amet, City24

Tehingute arv on langenud 69%,  
tehinguhind 50%



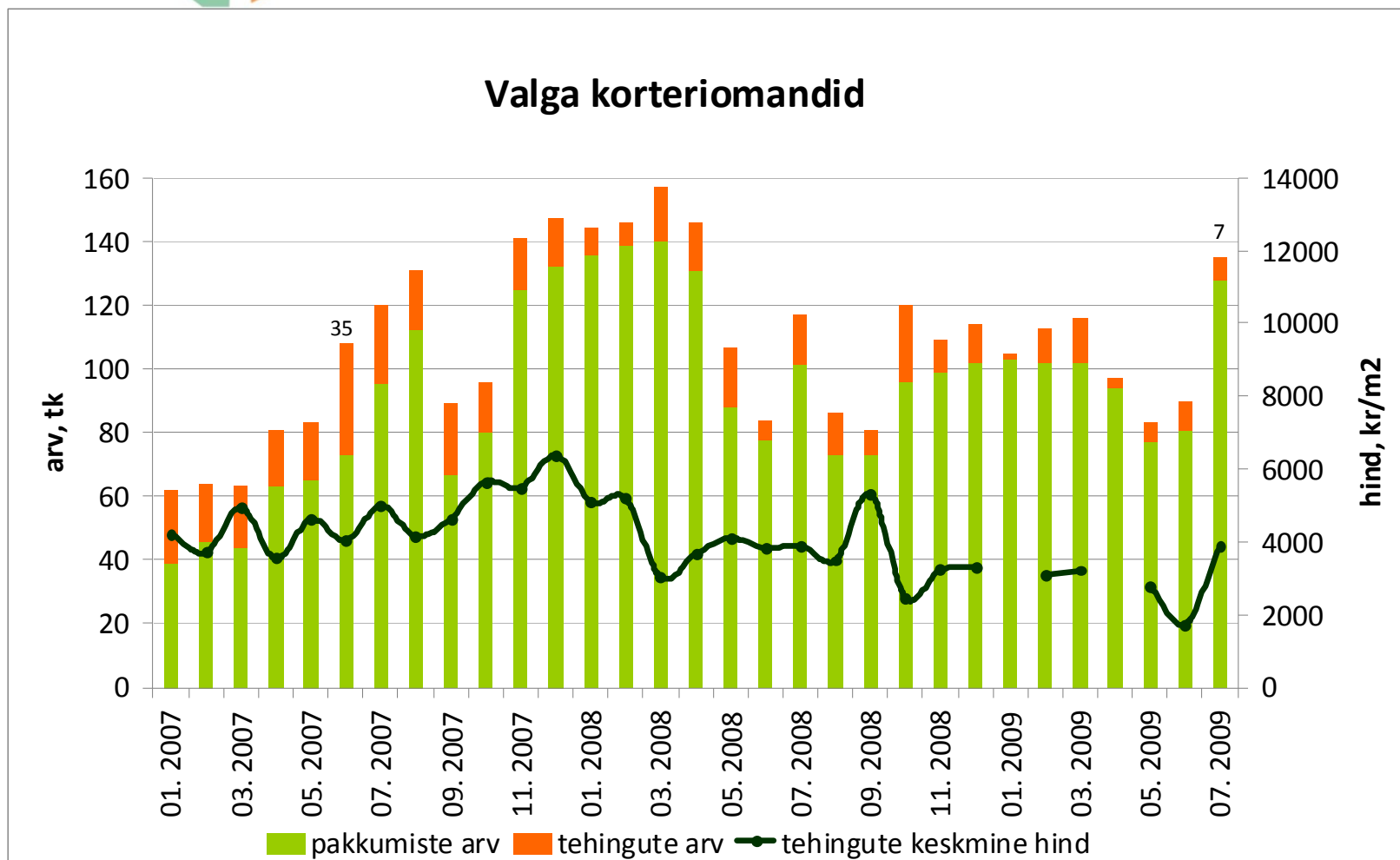
Allikad: Maa-amet, City24

Tehingute arv on langenud 95%,  
tehinguhind ca 50%



Allikad: Maa-amet, City24

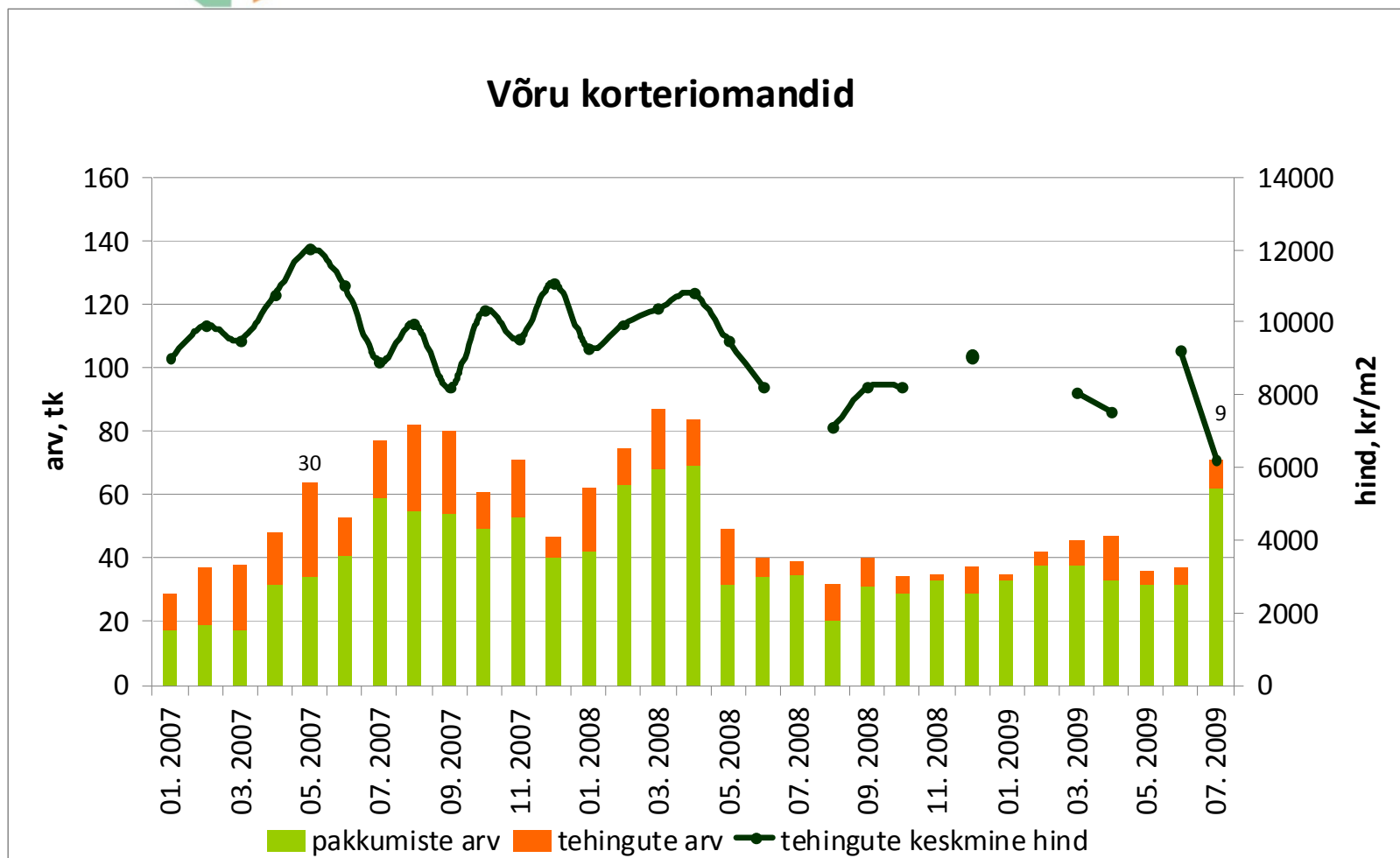
Tehingute arv on langenud 80%,  
tehinguhind 39% (juuli +124,1%)



Allikad: Maa-amet, City24

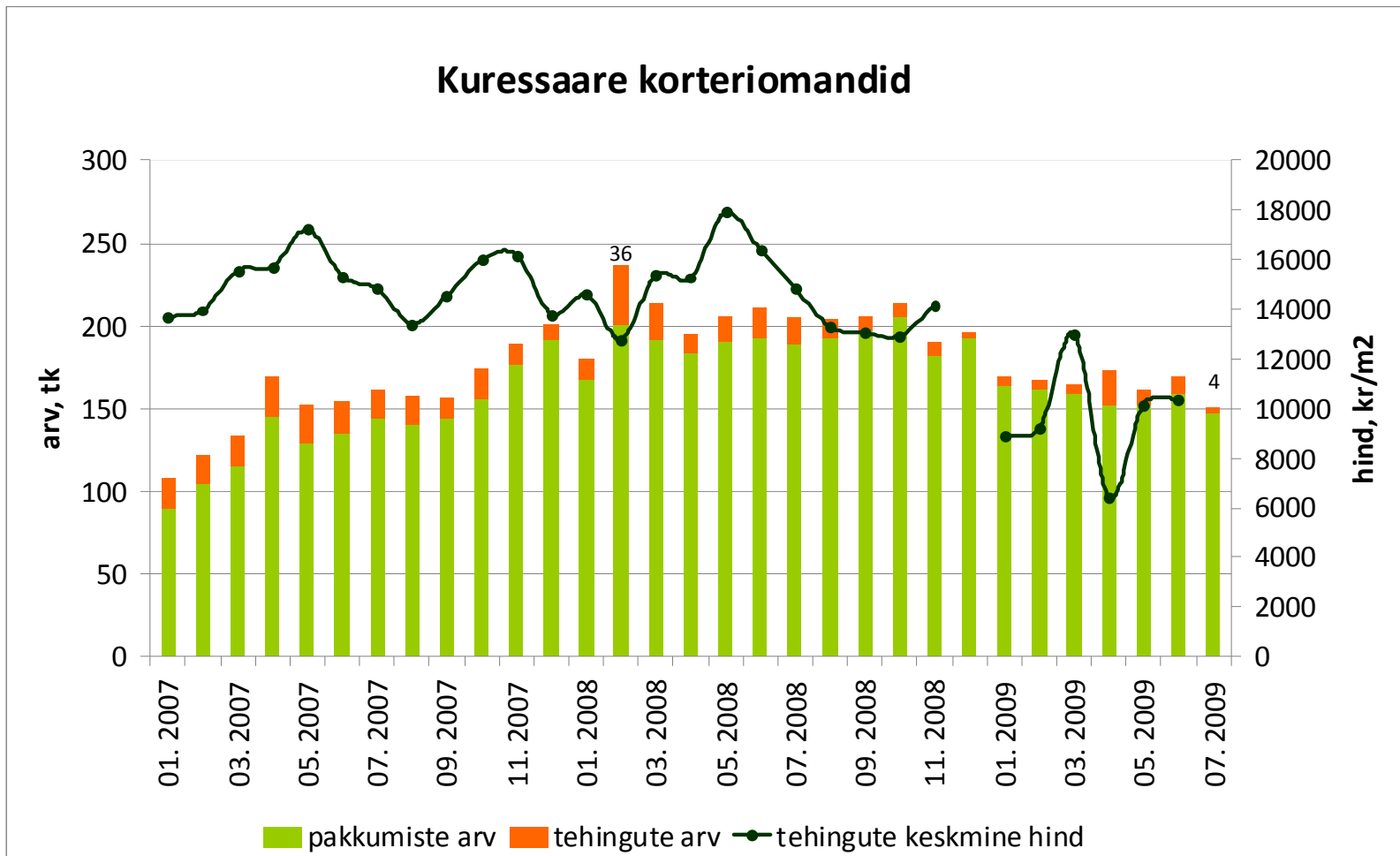


Tehingute arv on langenud 70%  
tehinguhind 48% (juuli -32,3%)



Allikad: Maa-amet, City24

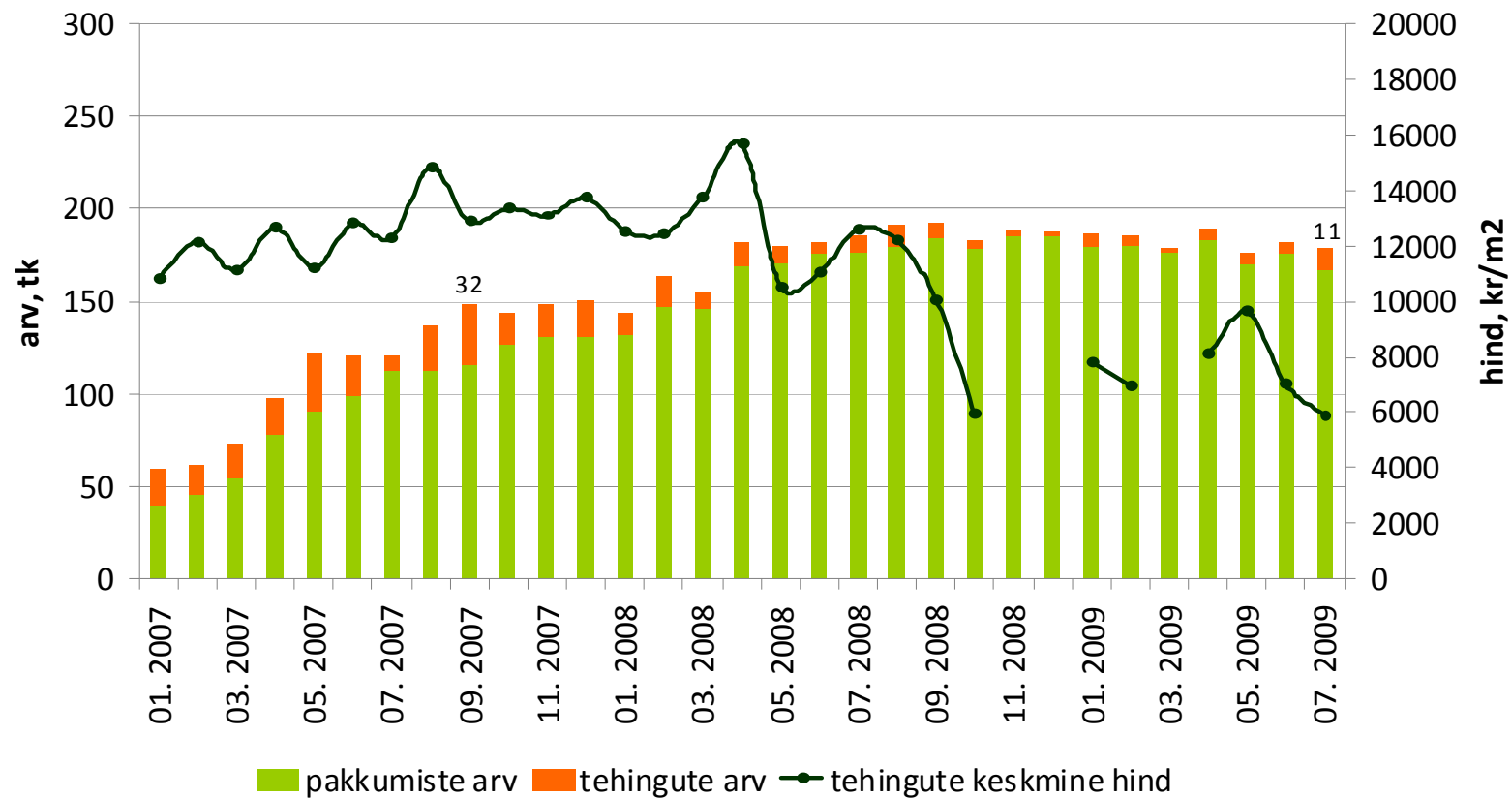
Tehingute arv on langenud 89%  
tehinguhind 42%



Allikad: Maa-amet, City24

Tehingute arv on langenud 66%,  
tehinguhind ca 62% (juuli -15,9%)

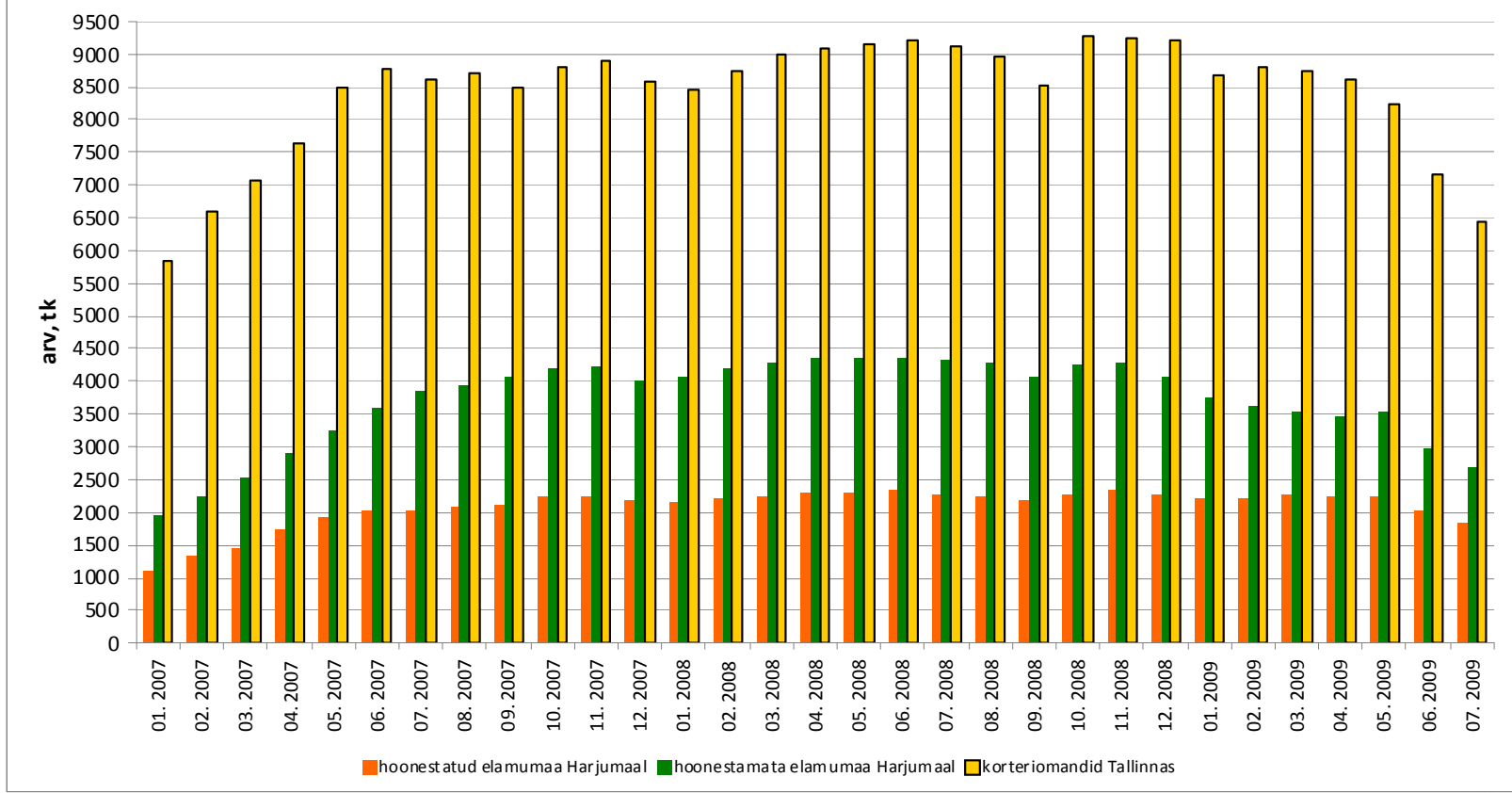
### Haapsalu korteriomandid



Allikad: Maa-amet, City24

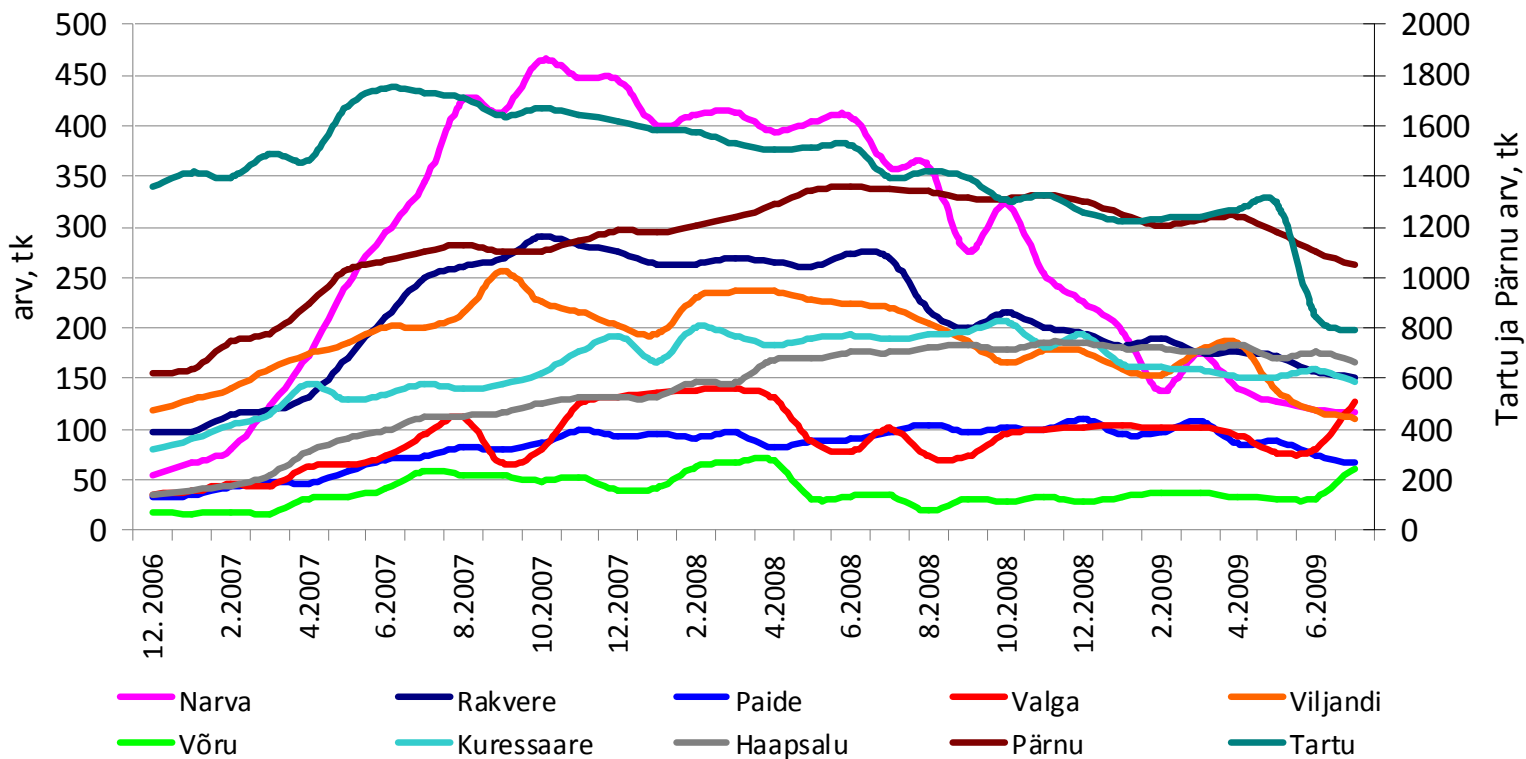


### Elukondliku kinnisvara pakkumiste arv

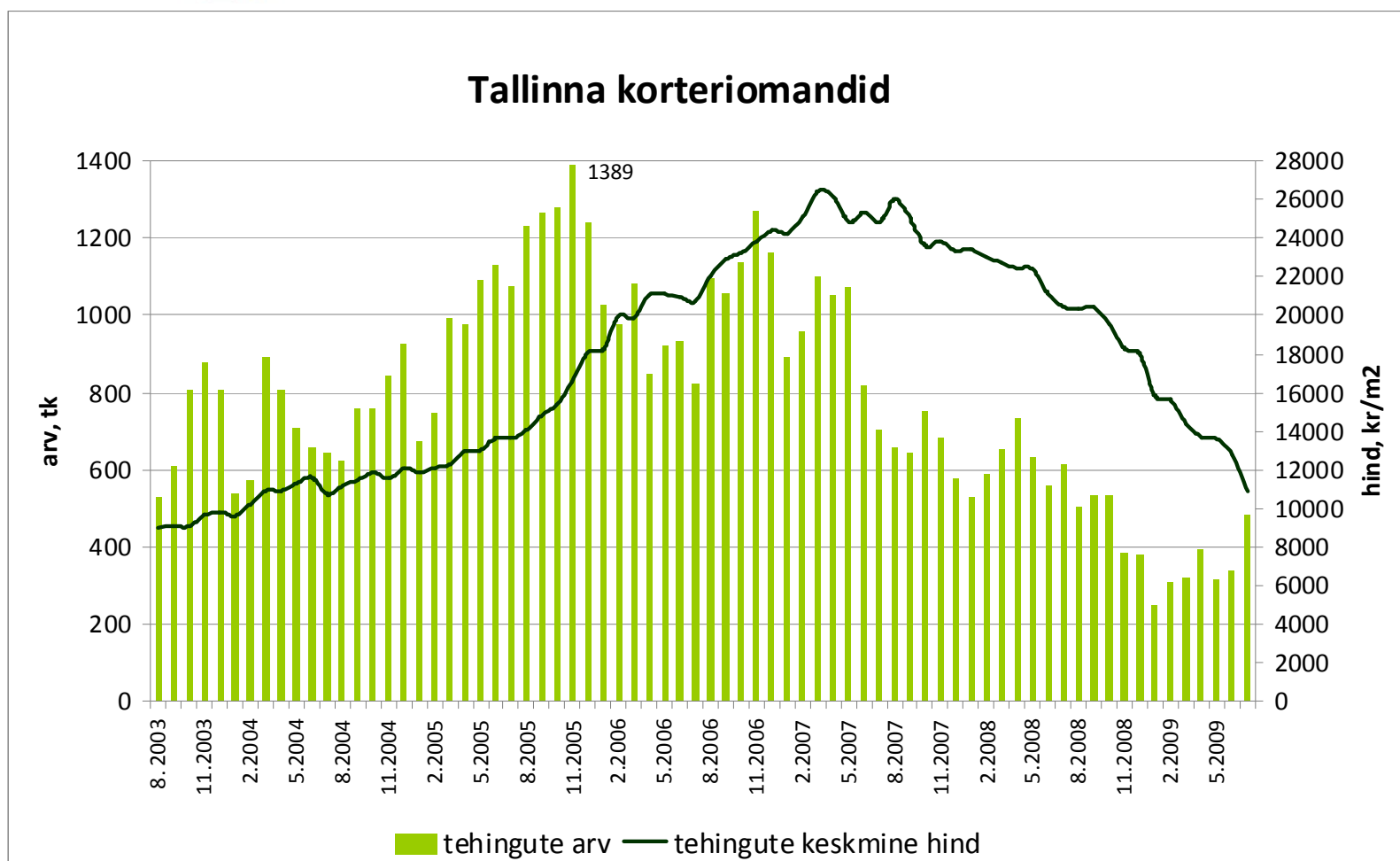




### Korteriomandite pakkumiste arv Eesti linnades (City24 baasil)

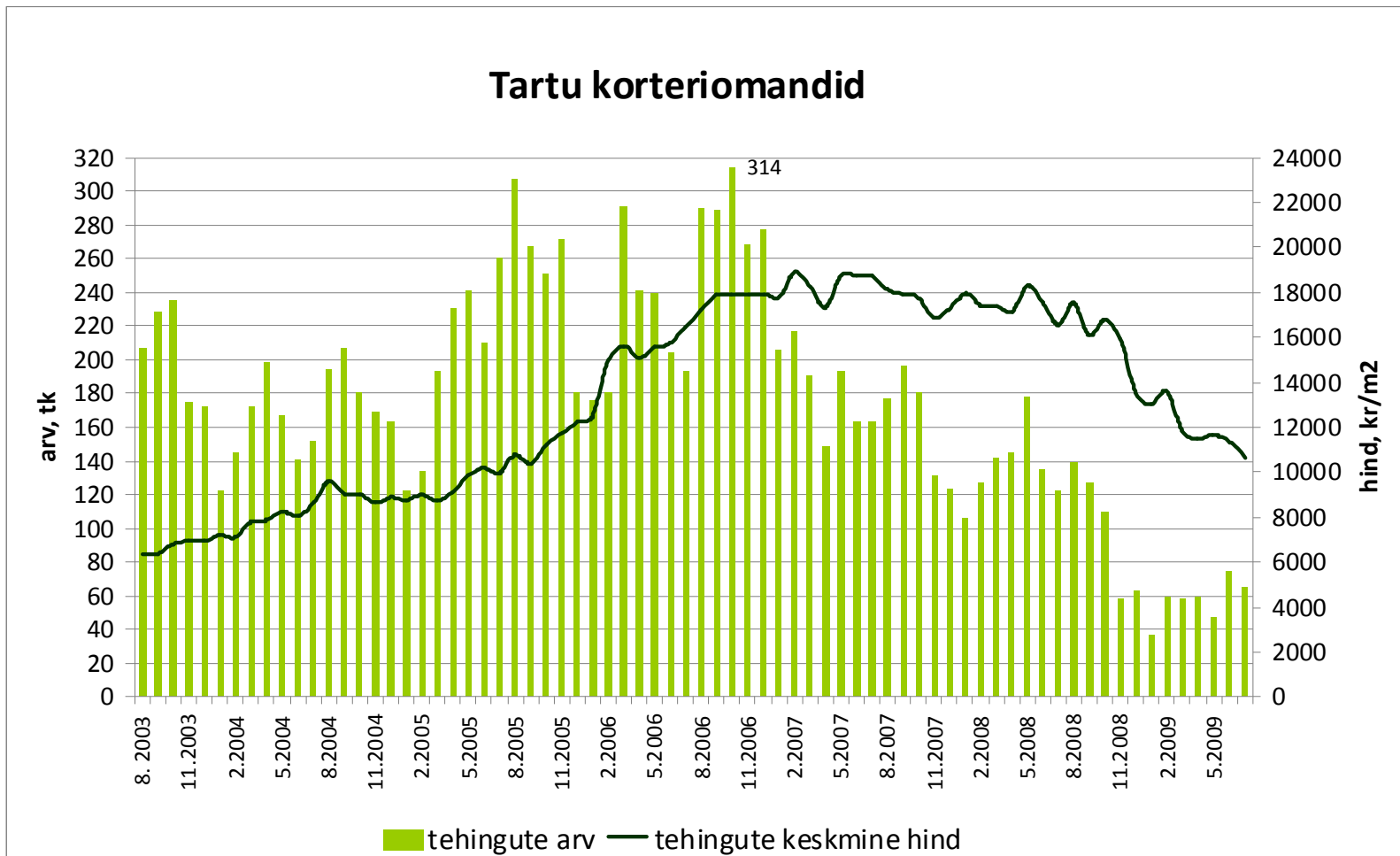


Tehingute arv on langenud 65%,  
tehinguhind 59% (juuli -15%)



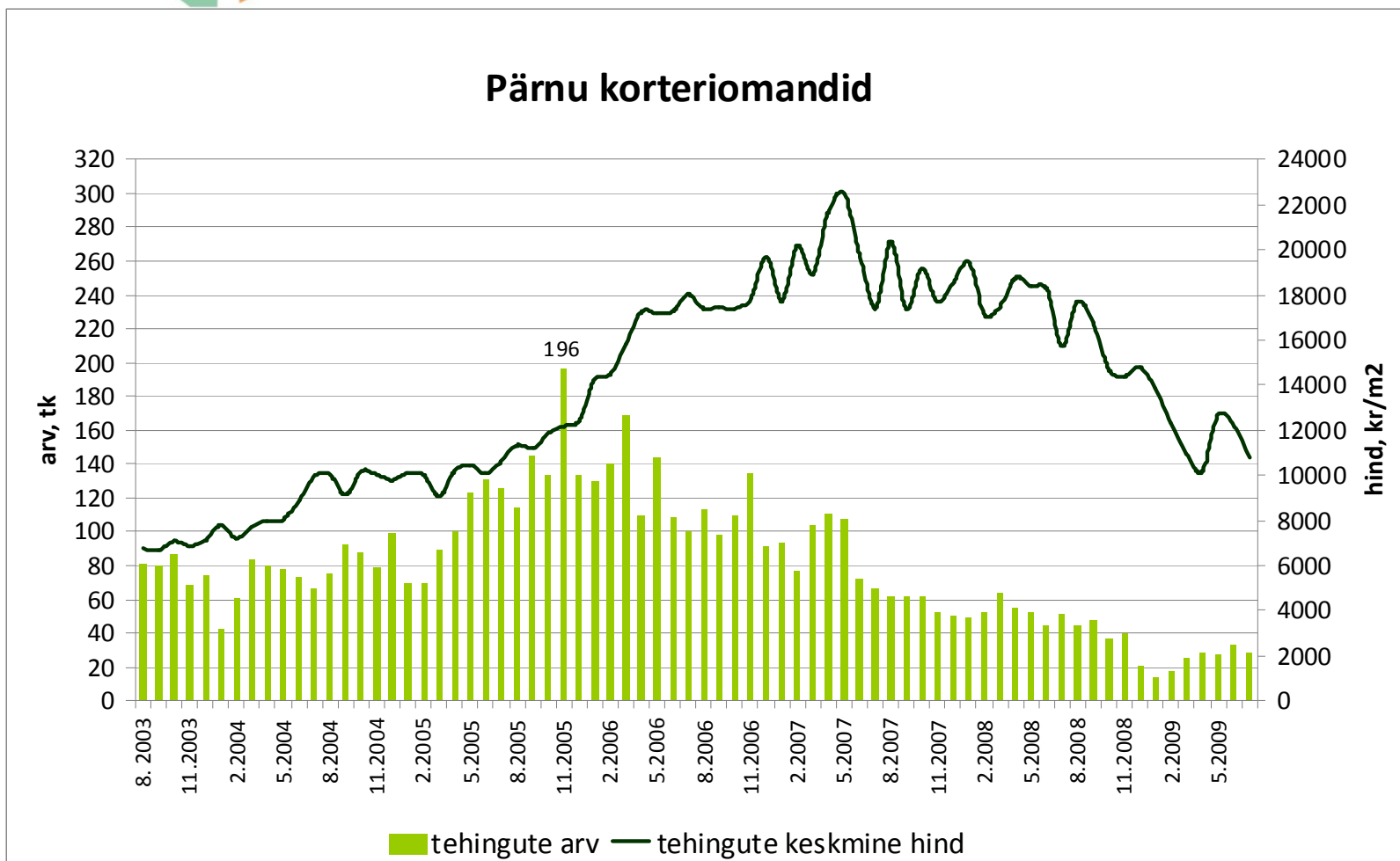
Allikas: Maa-amet

Tehingute arv on langenud 79%,  
tehinguhind 44% (juuli -6,1%)



Allikas: Maa-amet

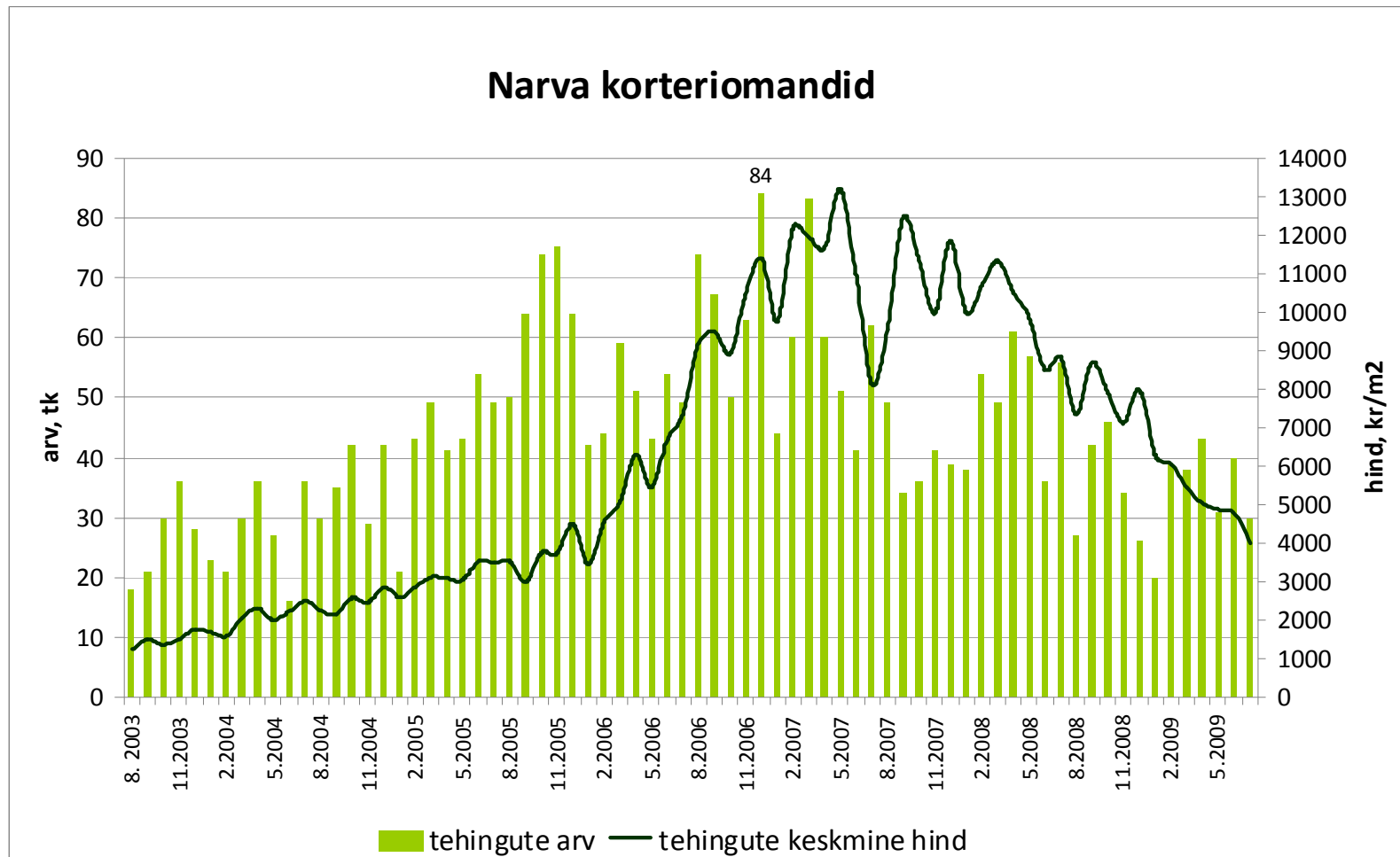
Tehingute arv on langenud 85%,  
tehinguhind 52% (juuli -11,7%)



Allikas: Maa-amet

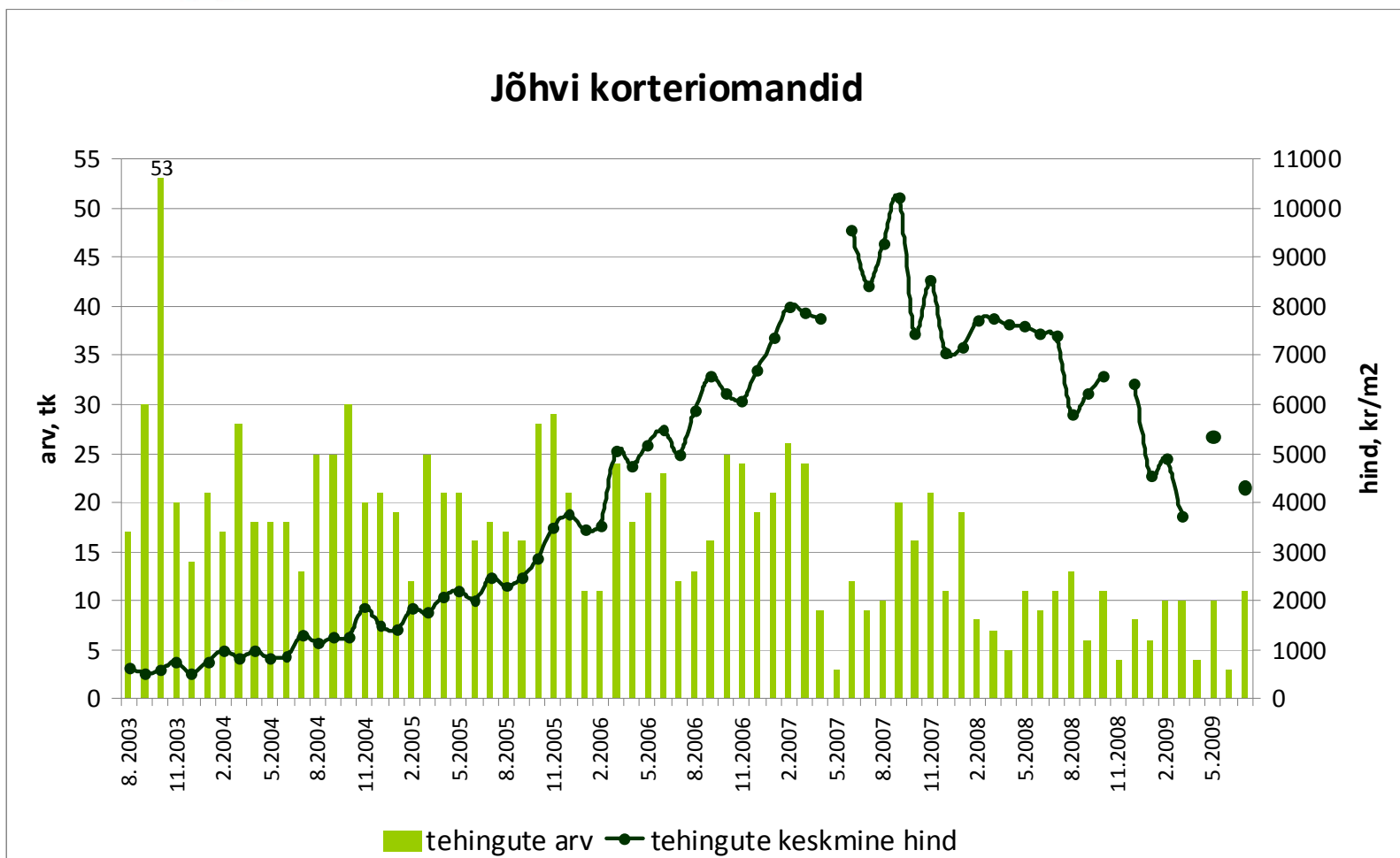


Tehingute arv on langenud 64%,  
tehinguhind 69 % (juuli -15,9%)



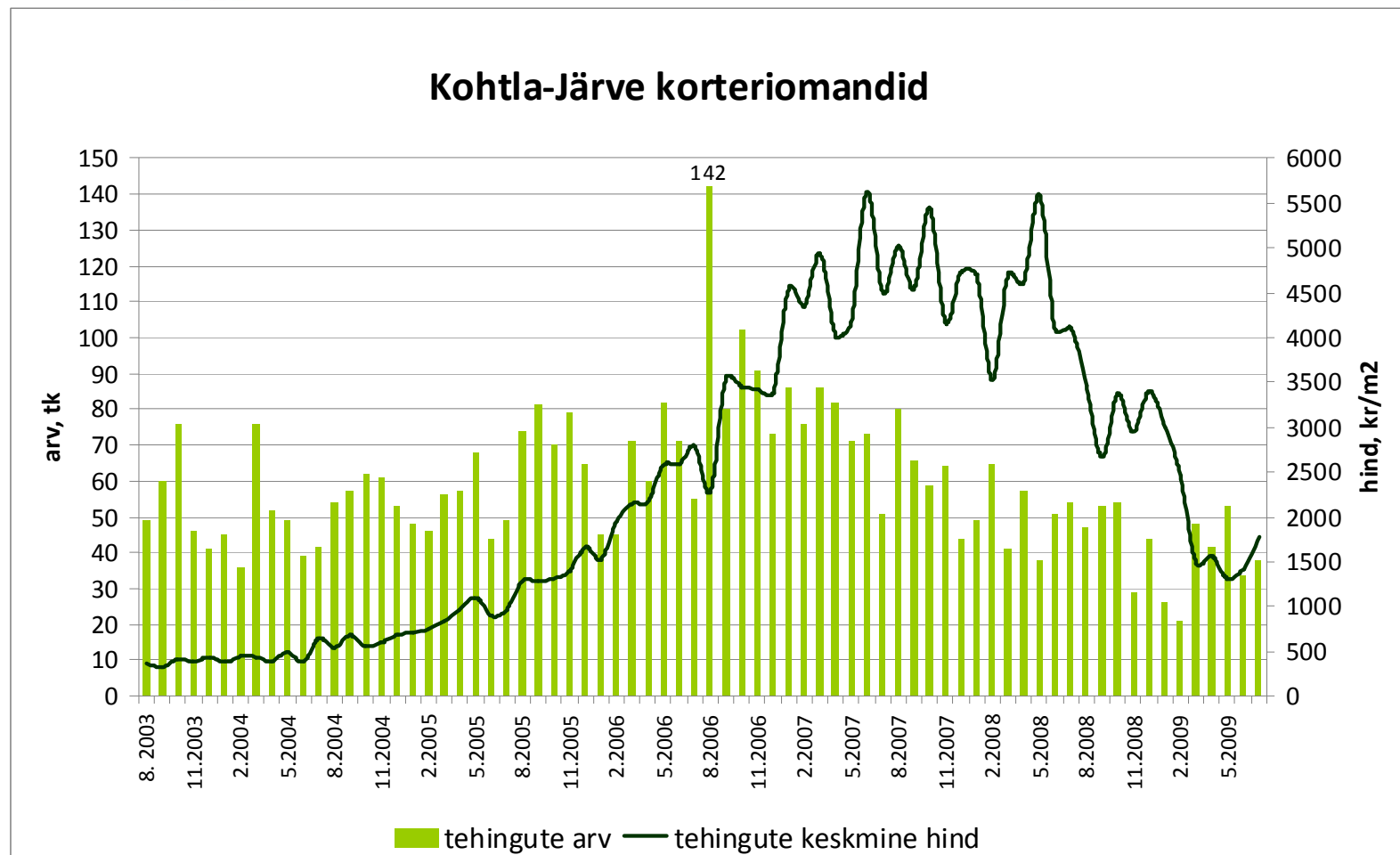
Allikas: Maa-amet

Tehingute arv on langenud 79%,  
tehinguhind 58%



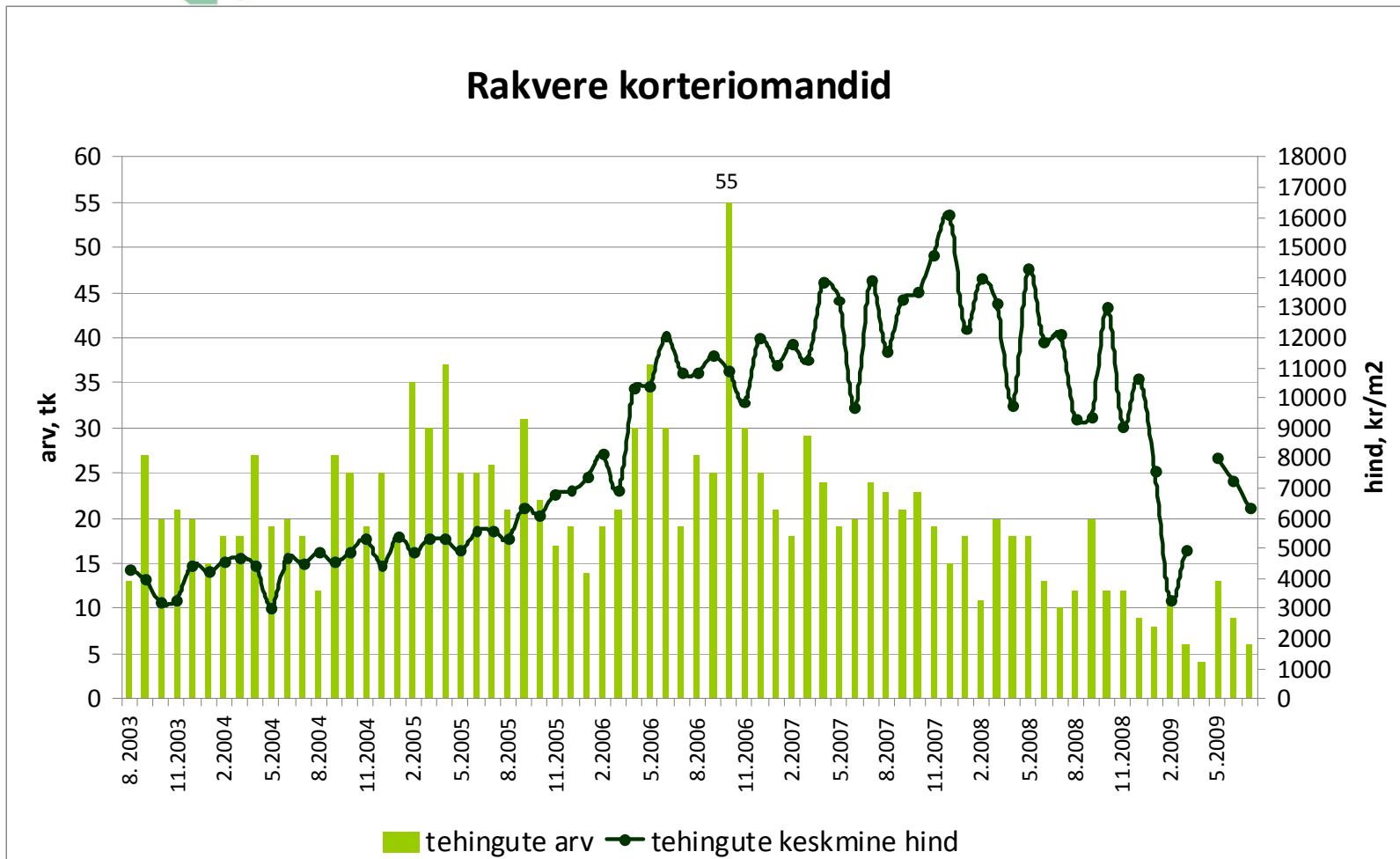
Allikas: Maa-amet

Tehingute arv on langenud 73%,  
tehinguhind 69% (juuli +24,6%)



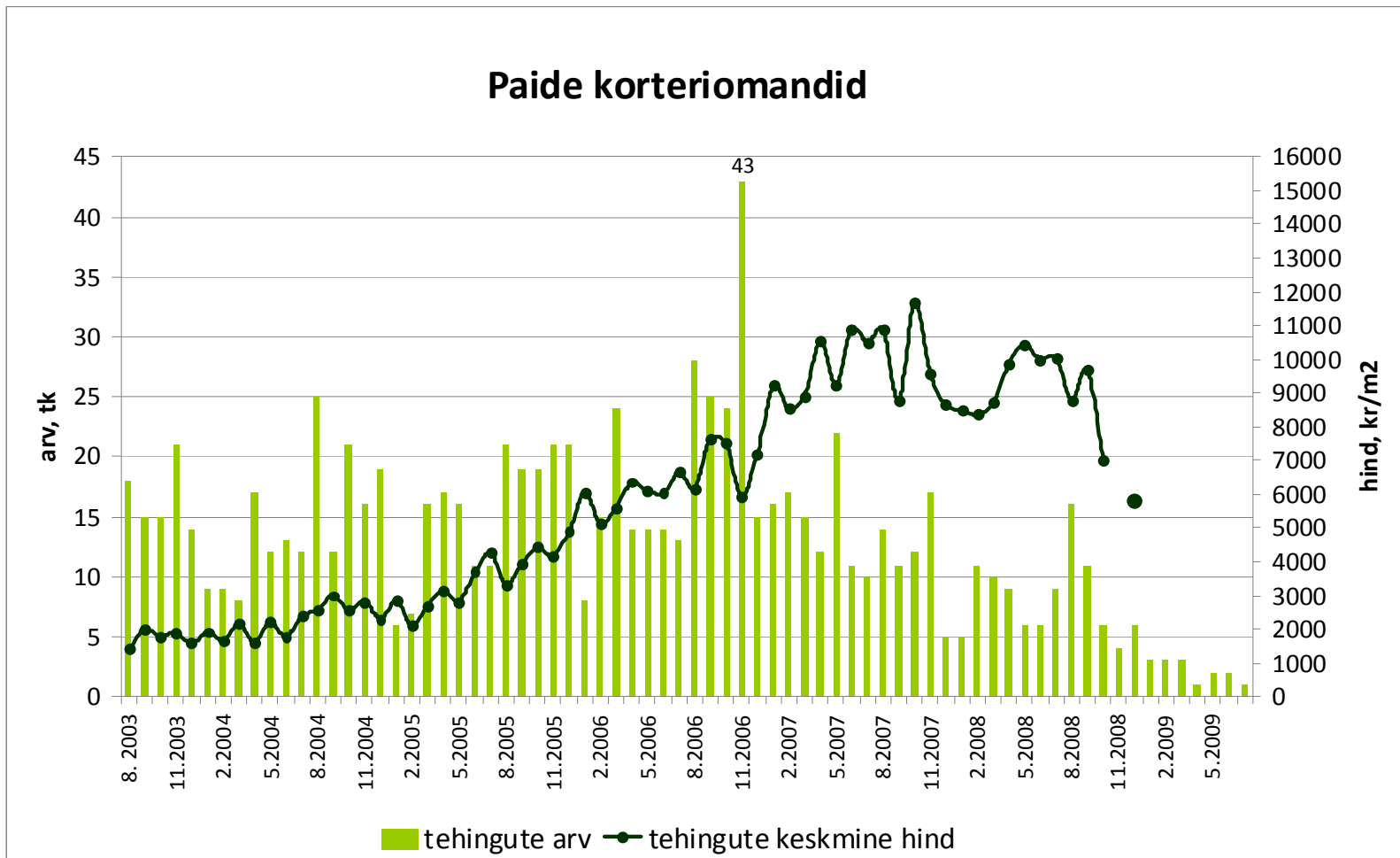
Allikas: Maa-amet

Tehingute arv on langenud 89%,  
tehinguhind 61% (juuli -12,8%)



Allikas: Maa-amet

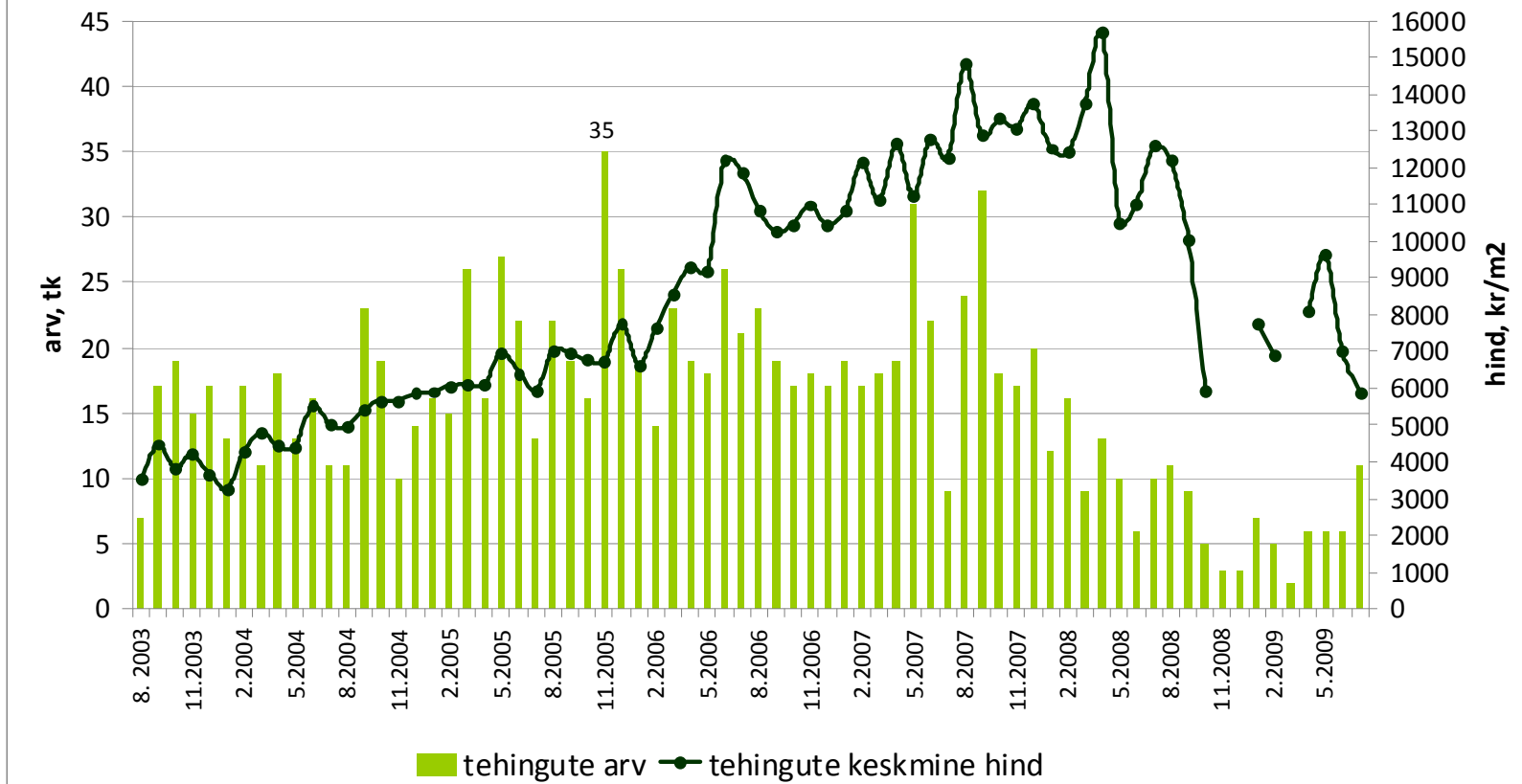
Tehingute arv on langenud 98%,  
tehinguhind ca 50%



Allikas: Maa-amet

Tehingute arv on langenud 69%,  
tehinguhind ca 62% (juuli -15,9%)

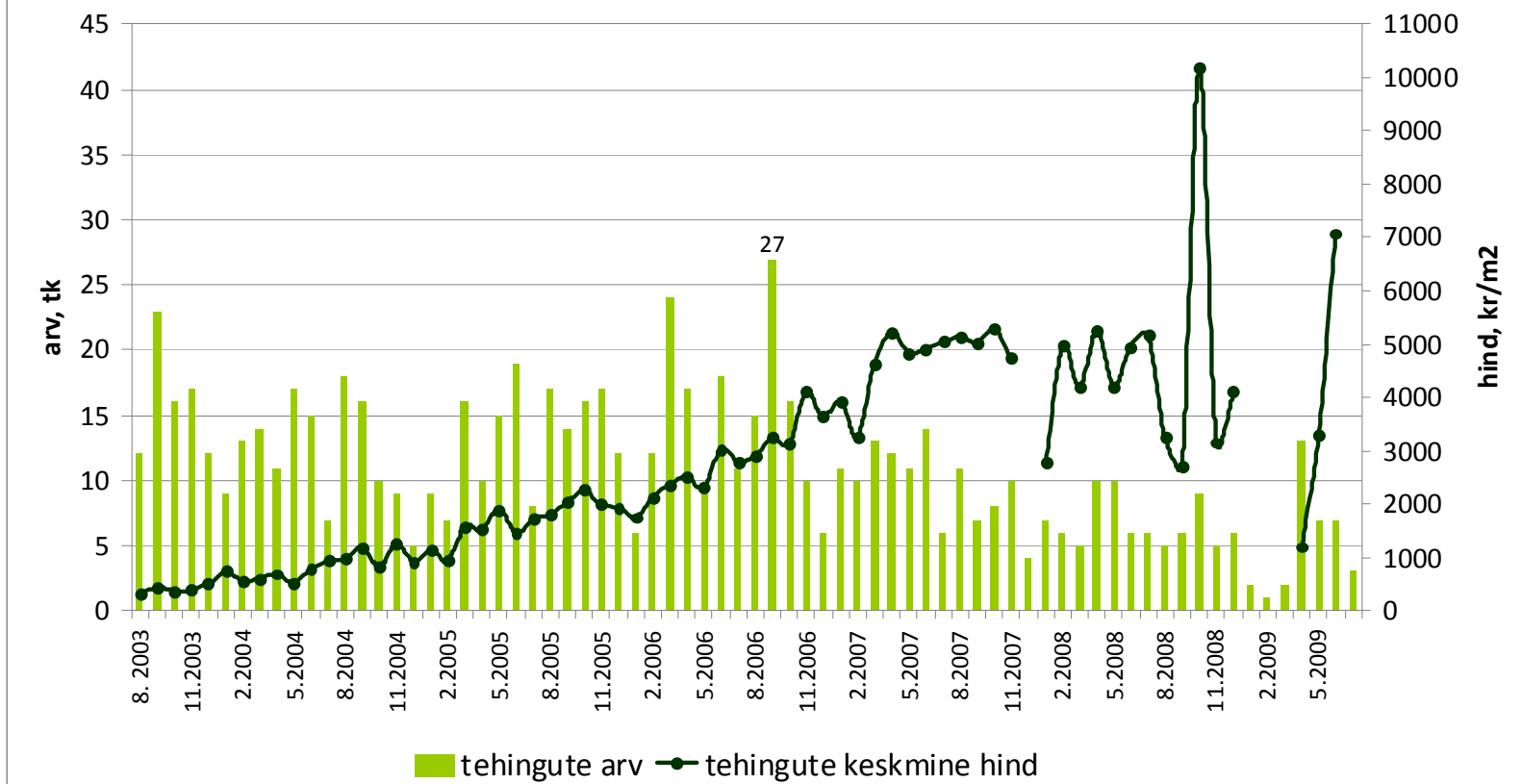
### Haapsalu korteriomandid



Allikas: Maa-amet

Tehingute arv on langenud 89%,  
tehinguhind ca 31%\*

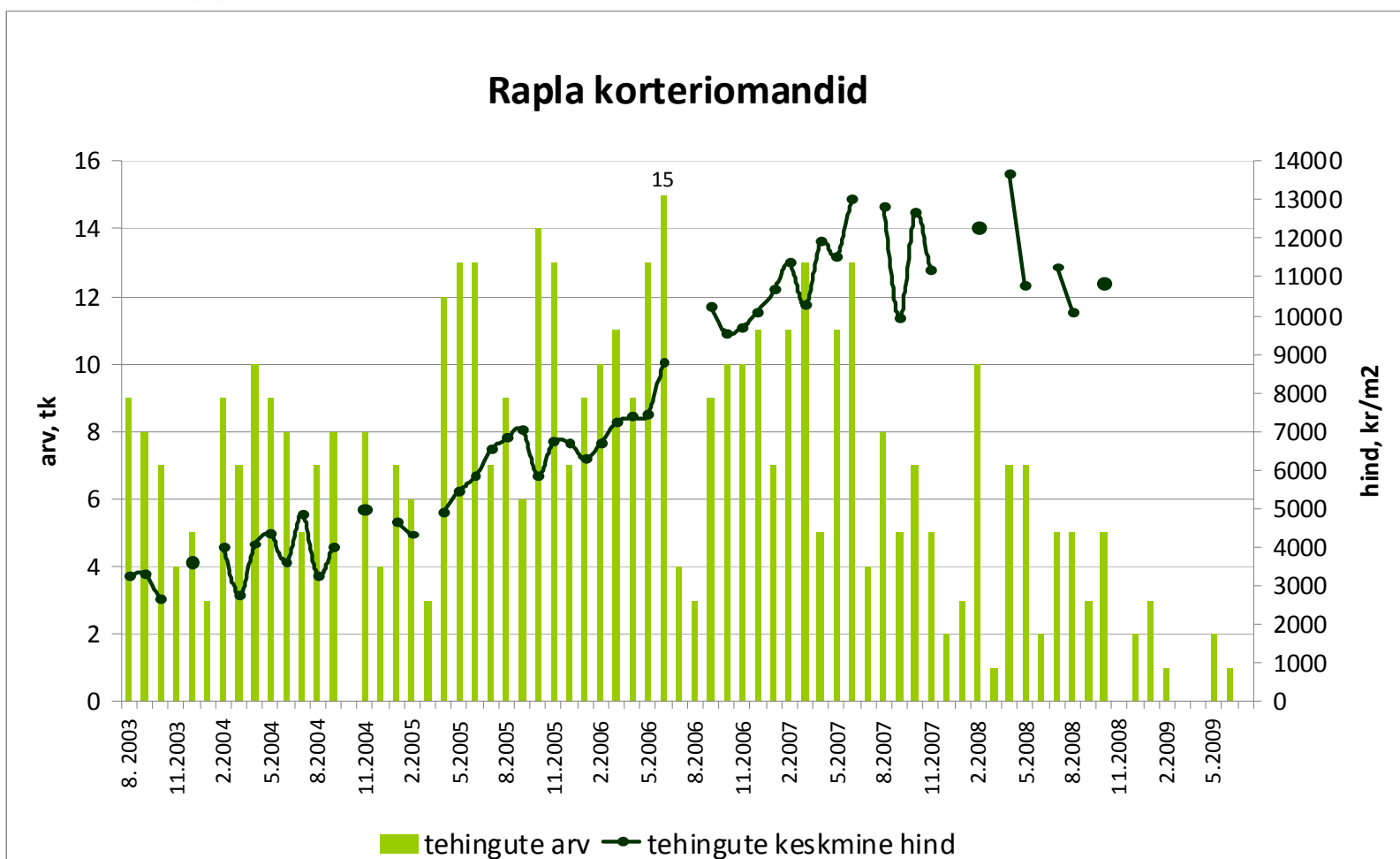
### Jõgeva korteriomandid



Allikas: Maa-amet

\* 2008-2009 järsud hinnatõusud on tingitud vabaturuvälistest tehingutest

Tehingute arv on langenud 93%,  
tehinguhind ca 21%

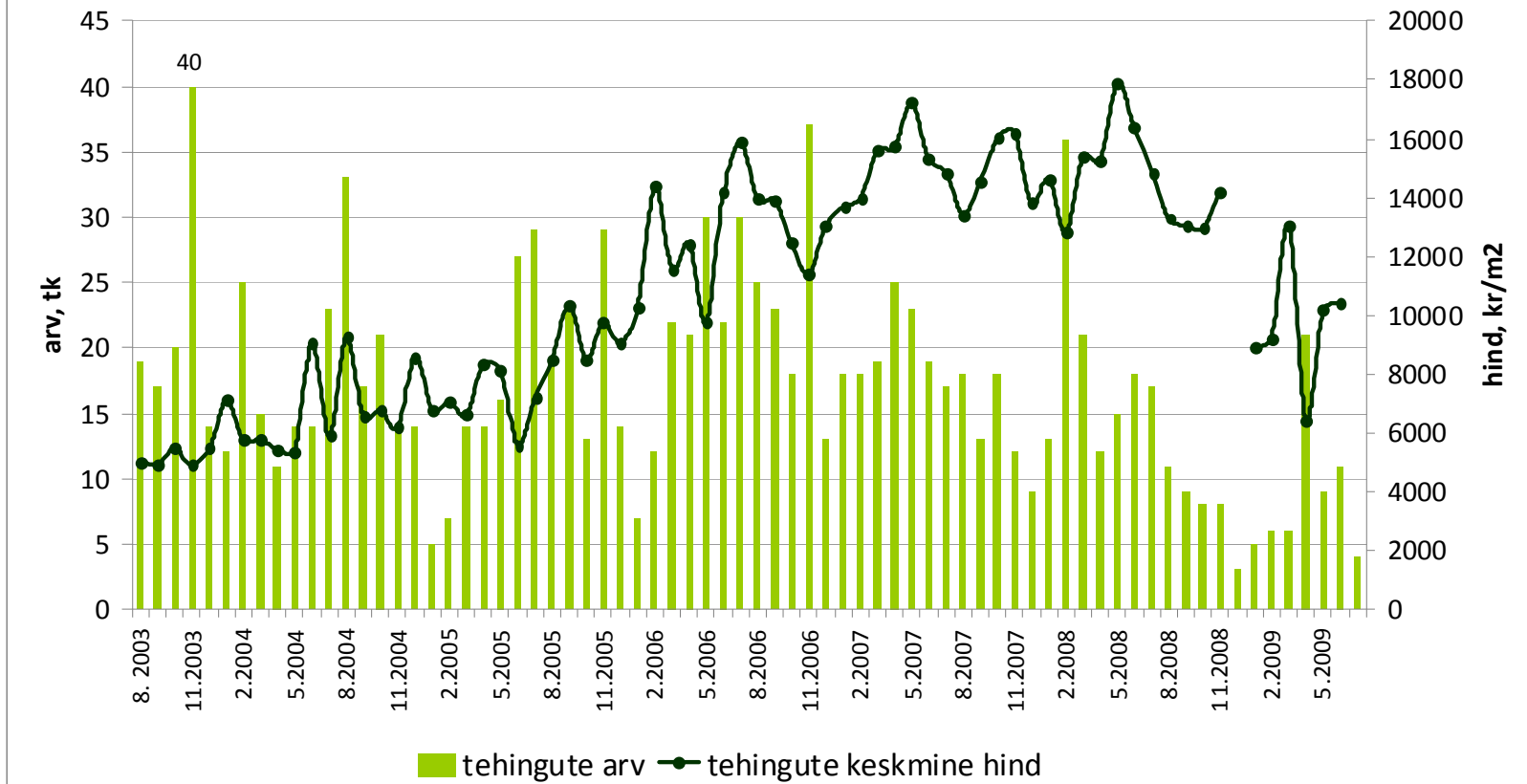


Allikas: Maa-amet



Tehingute arv on langenud 89%,  
tehinguhind 42%

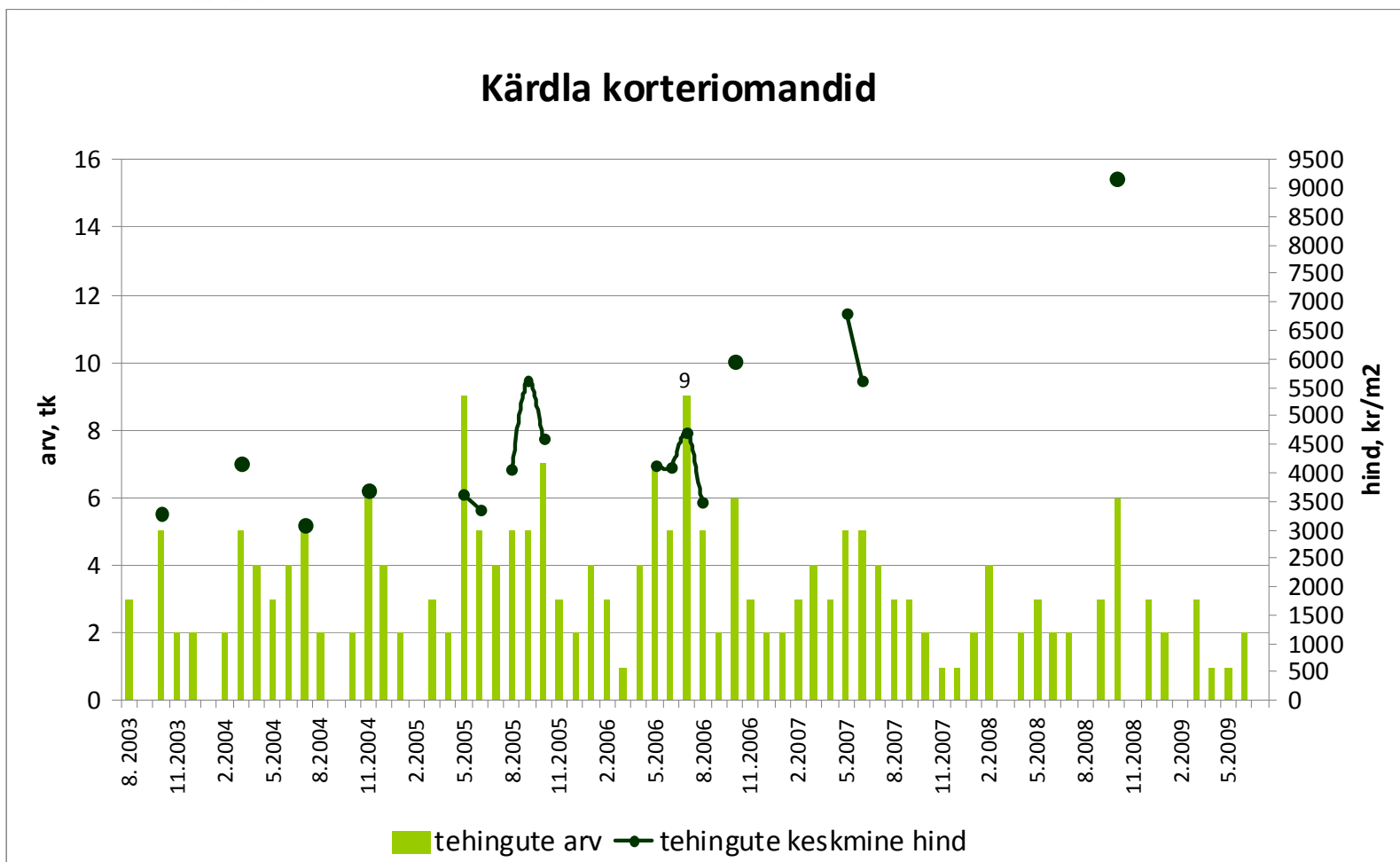
### Kuessaare korteriomandid



Allikas: Maa-amet

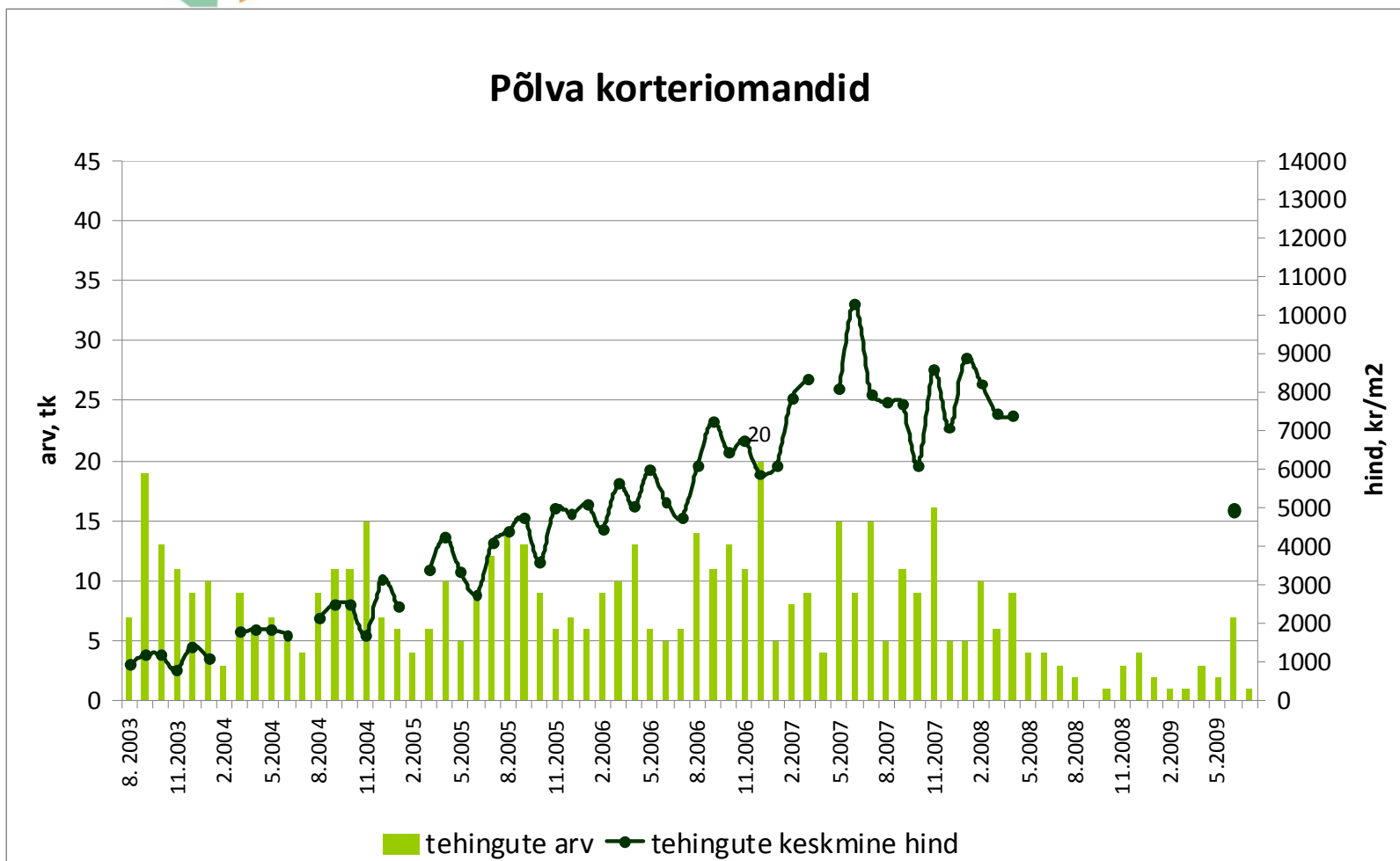


Tehingute arv on langenud 78%



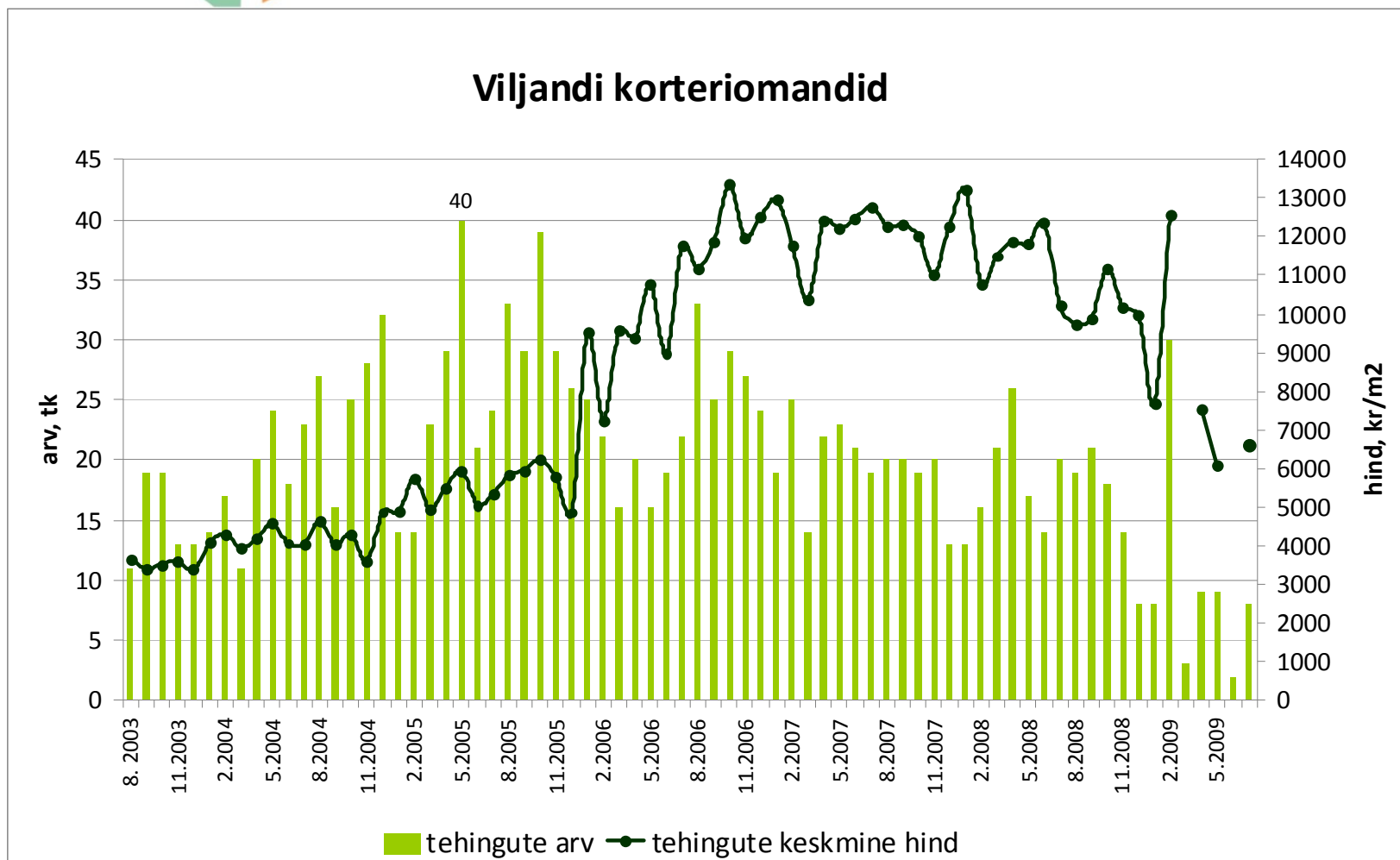
Allikas: Maa-amet

Tehingute arv on langenud 95%,  
tehinguhind ca 52%



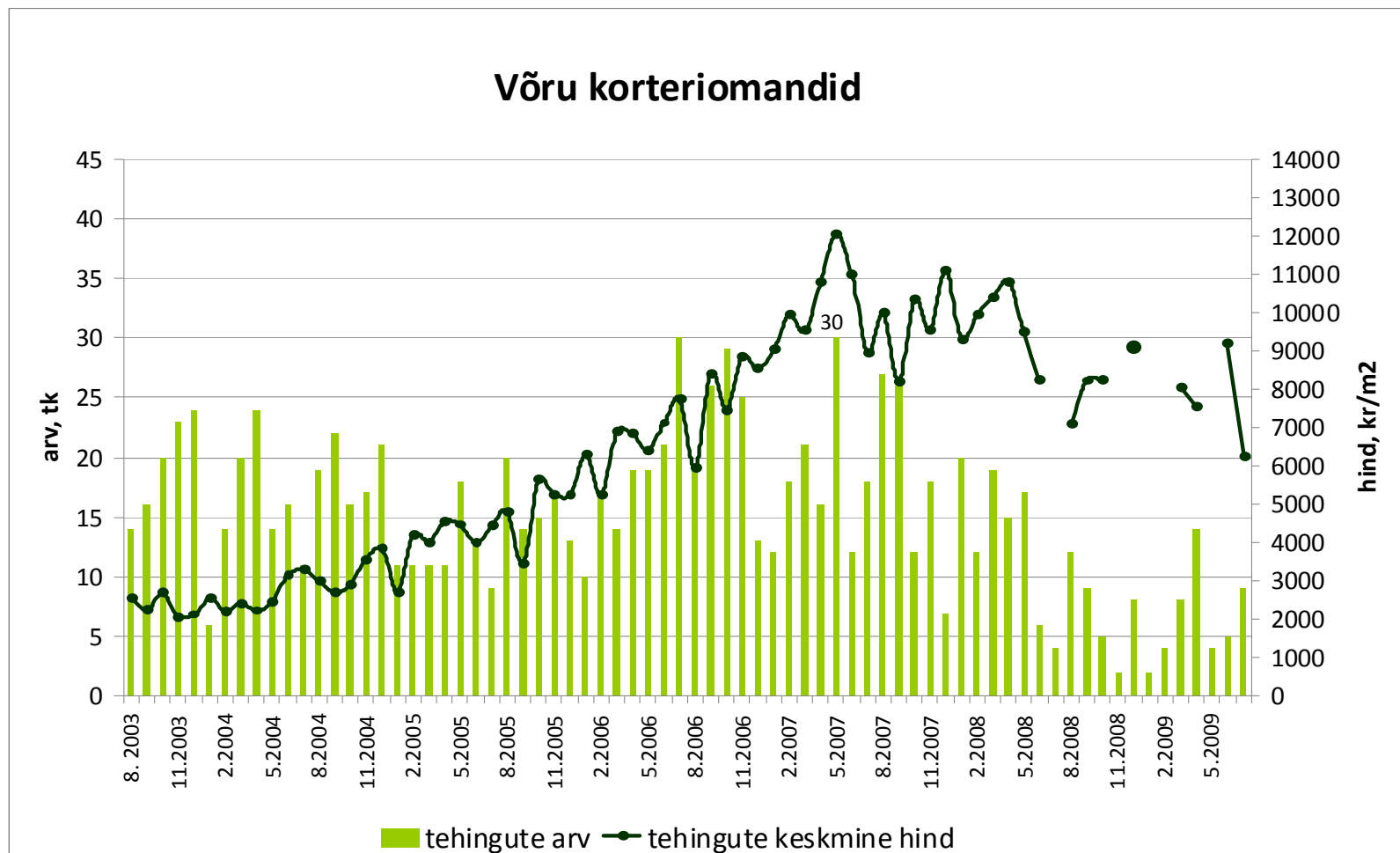
Allikas: Maa-amet

Tehingute arv on langenud 80%,  
tehinguhind 50%



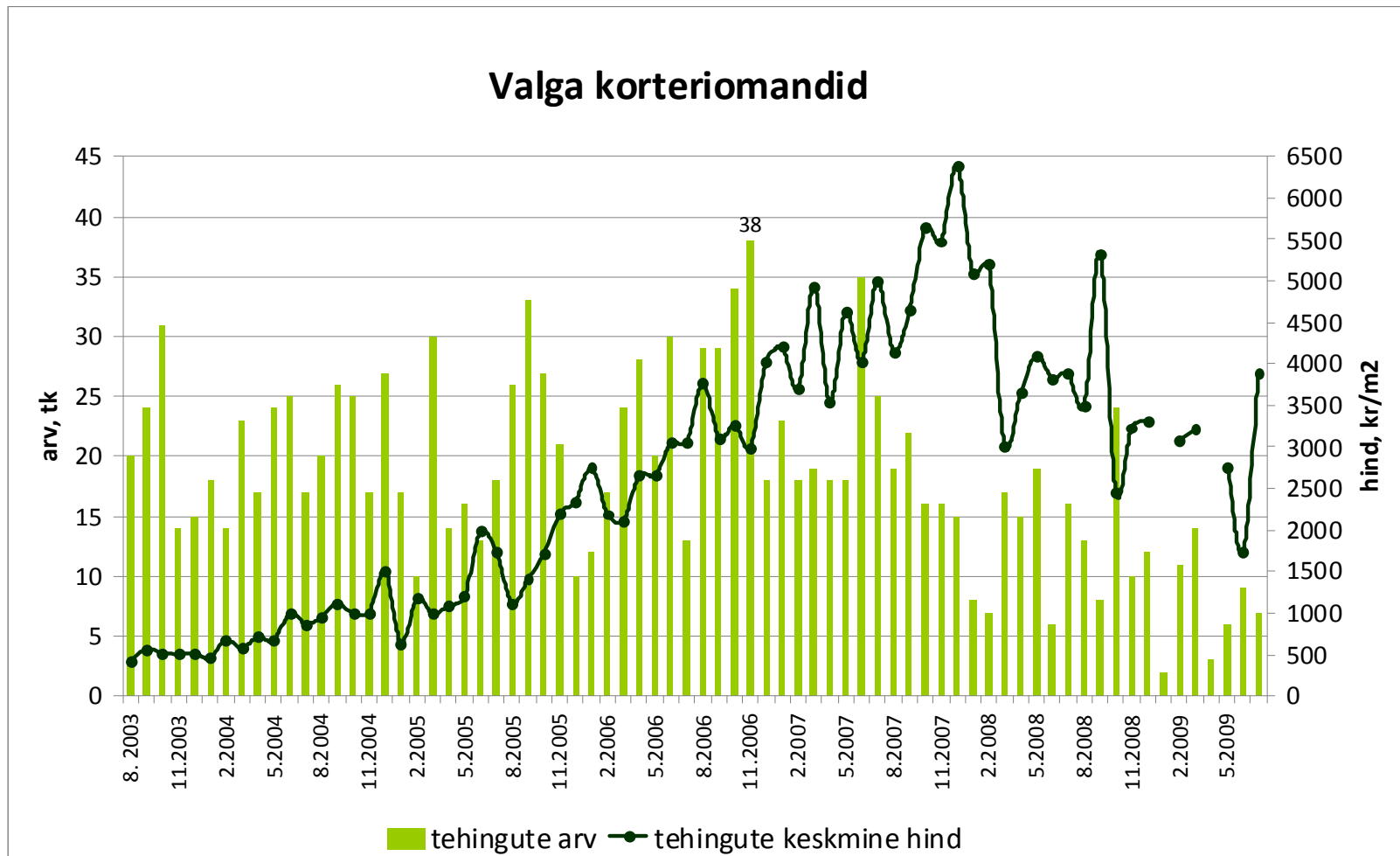
Allikas: Maa-amet

Tehingute arv on langenud 70%,  
tehinguhind 48% (juuli -32,3%)



Allikas: Maa-amet

Tehingute arv on langenud 82%,  
tehinguhind 39% (juuli +124,1%)



Allikas: Maa-amet