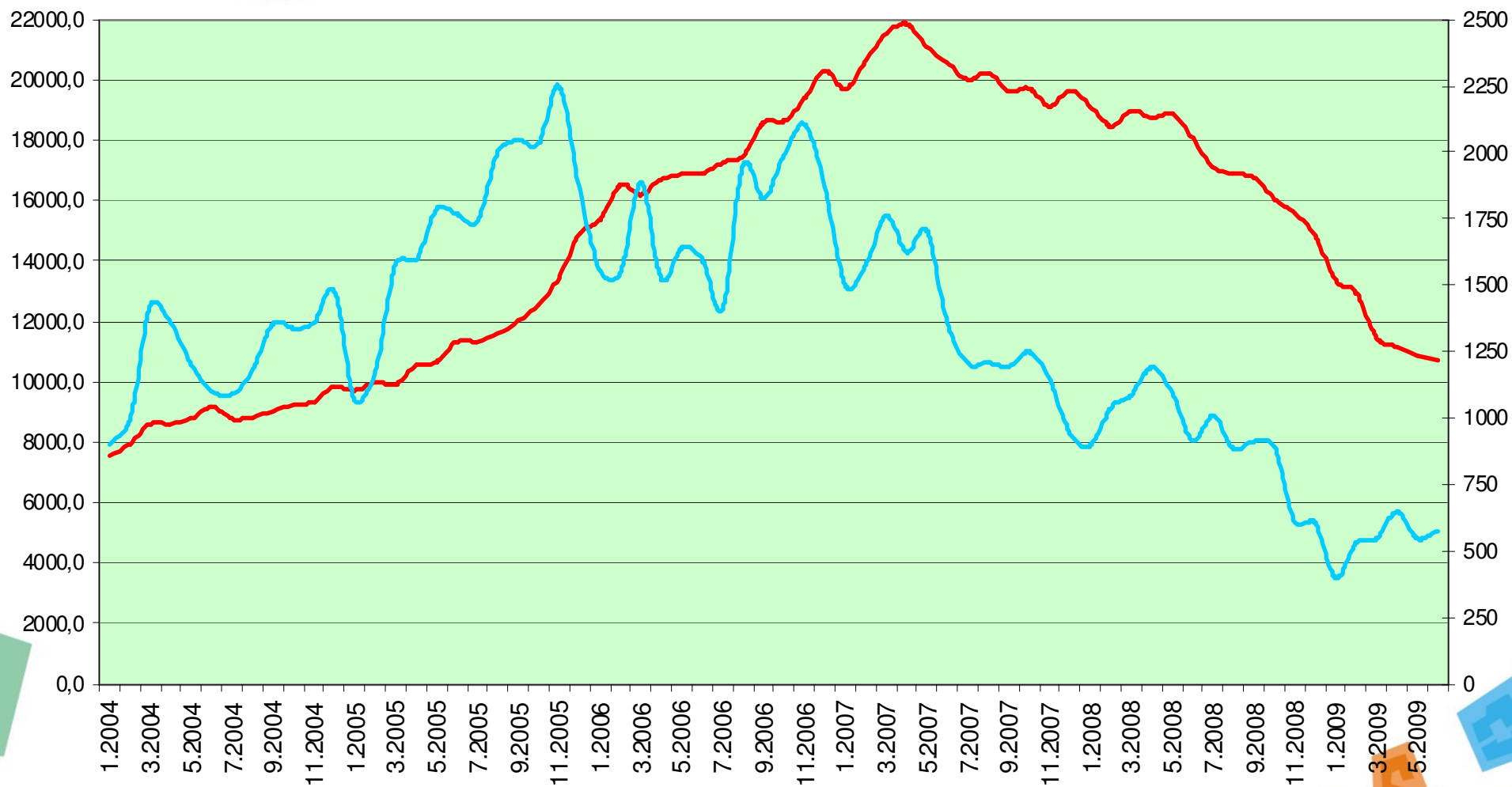




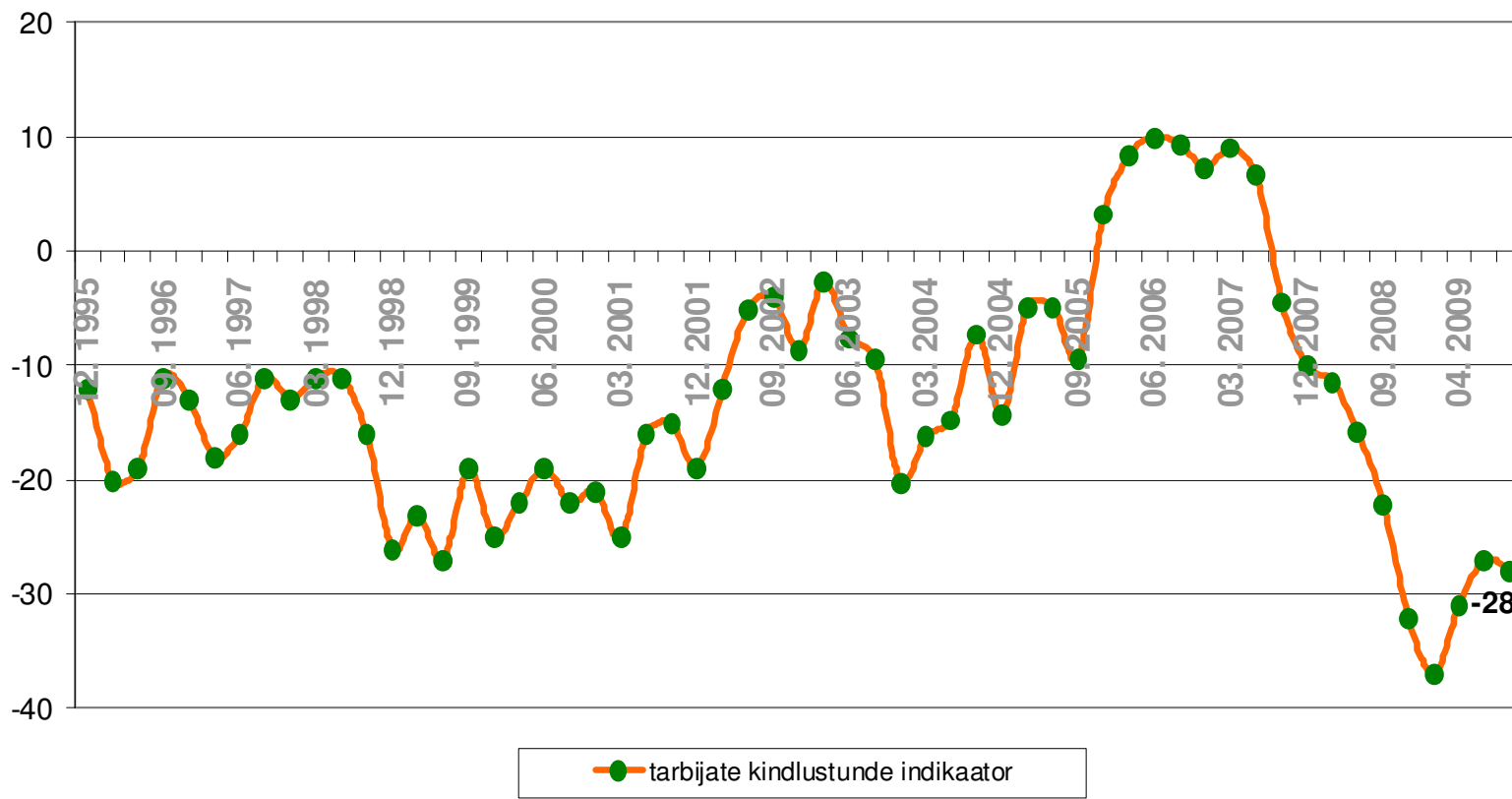
# **KINNISVARATURU AKTIIVSUS JA REGIONAALSED ERIPÄRAD**

## PINDI HINNAINDEKS



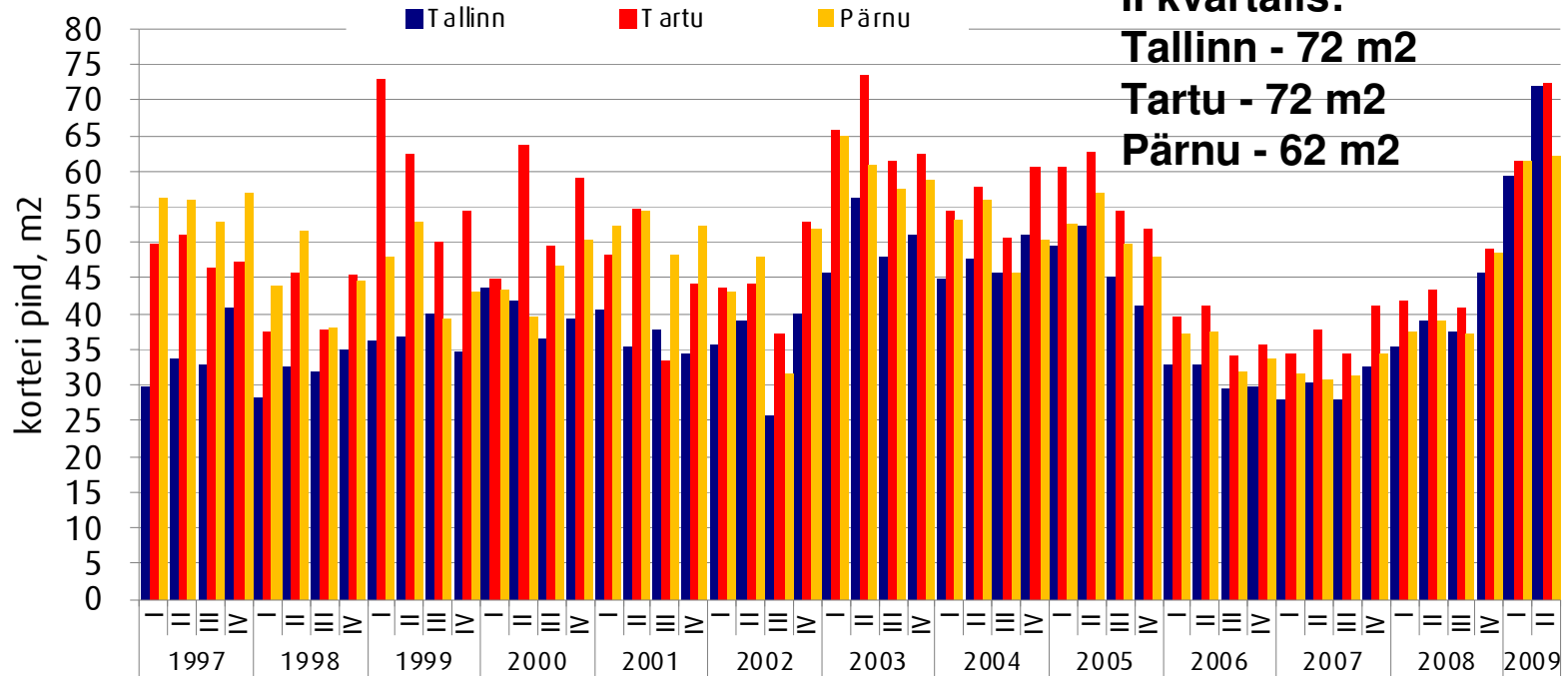
— Eesti 17 suurema linna korterite ruutmeetri kaalutud keskmine hind (allikad: Pindi Kinnisvara andmebaasid, Maa-amet, Statistikaamet)  
 — Eesti 17 suurema linna tehingute arv (allikas: Maa-amet)

## Tarbijate kindlustunde indikaator

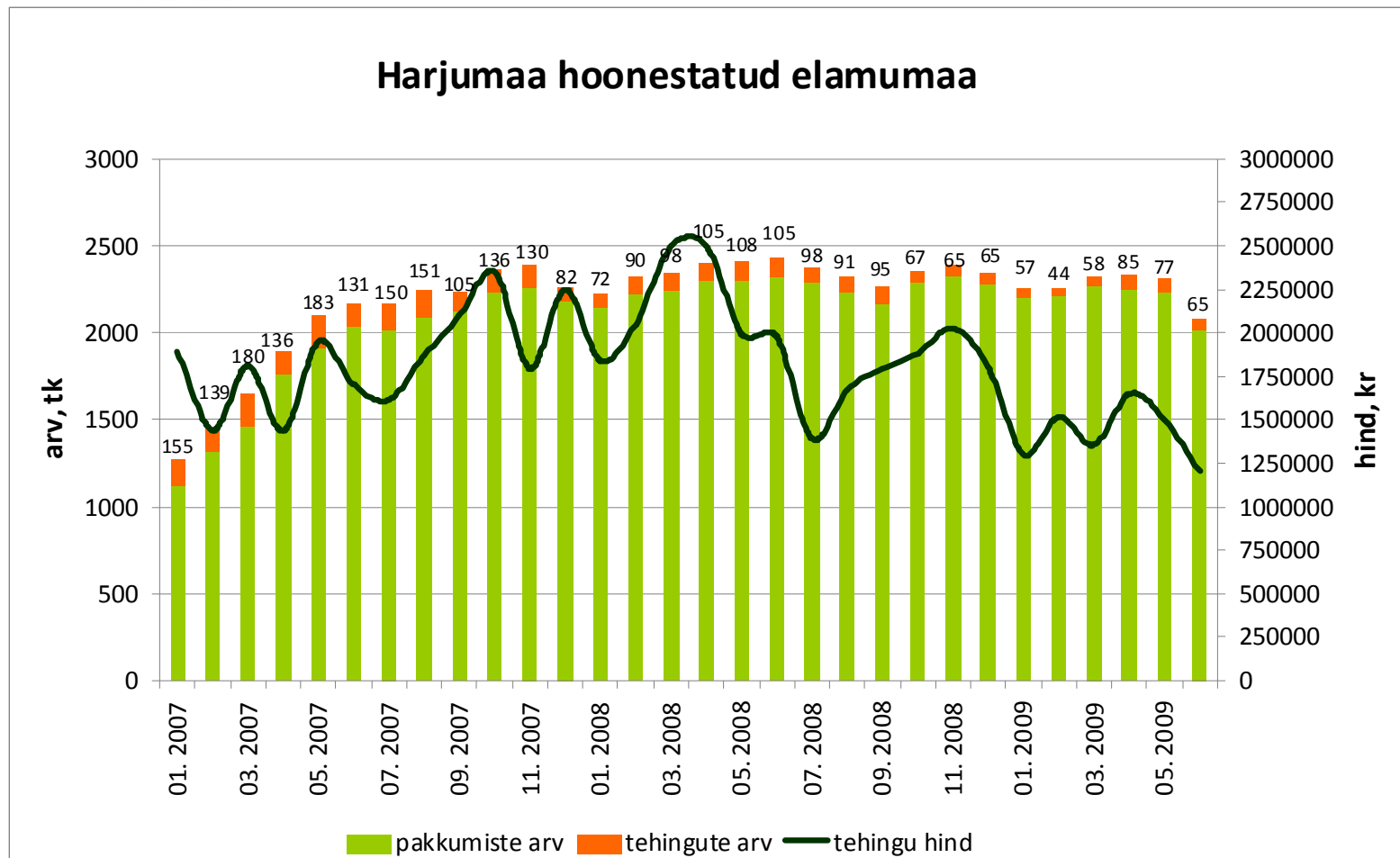


# Kinnisvara ostujõud keskmise palga baasil arvatatud laenuvõime järgi:

Kinnisvara ostujõud keskmise palga baasil arvatatud laenuvõime järgi

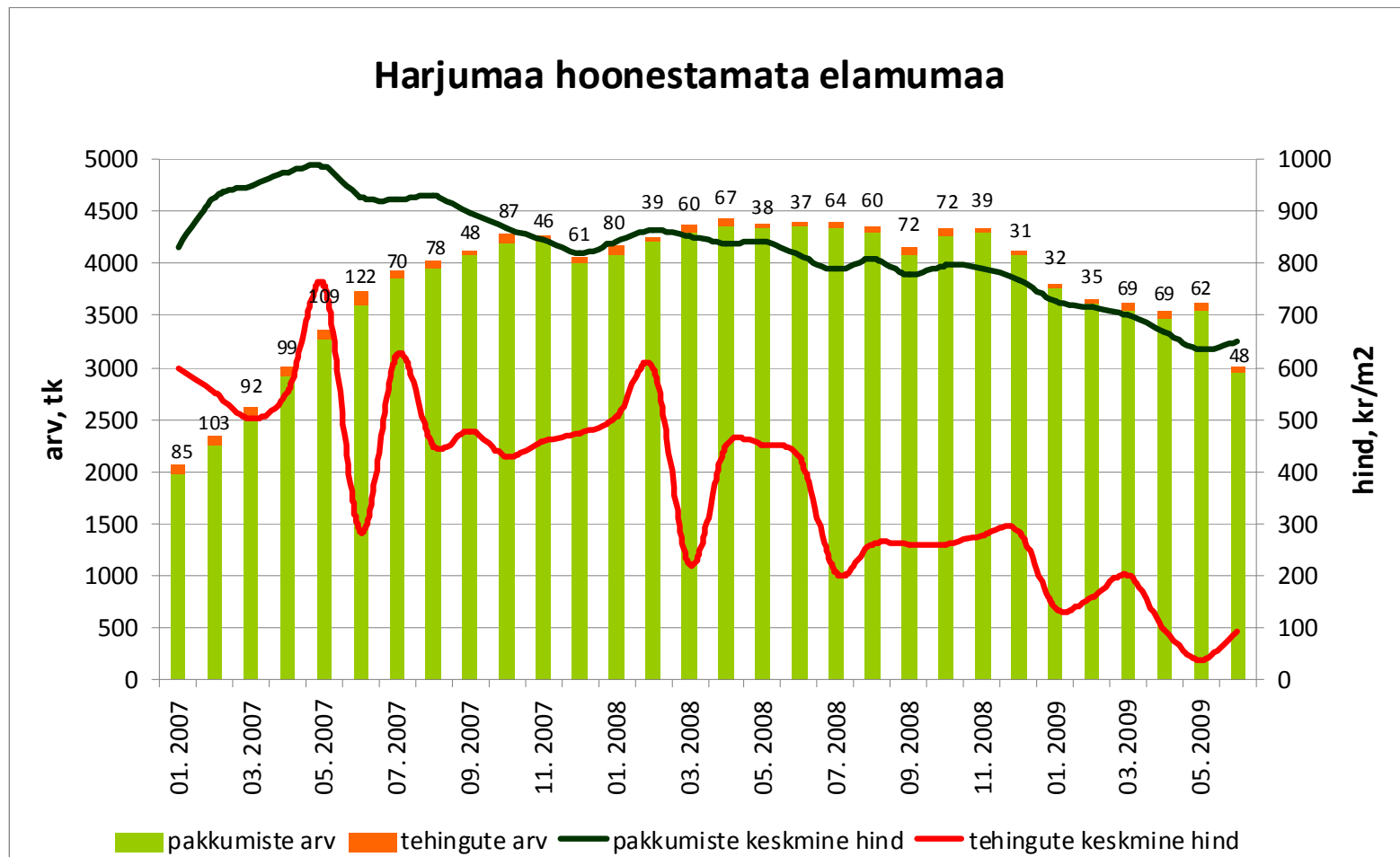


Tehingute arv on langenud 64%,  
tehinguhind 52%



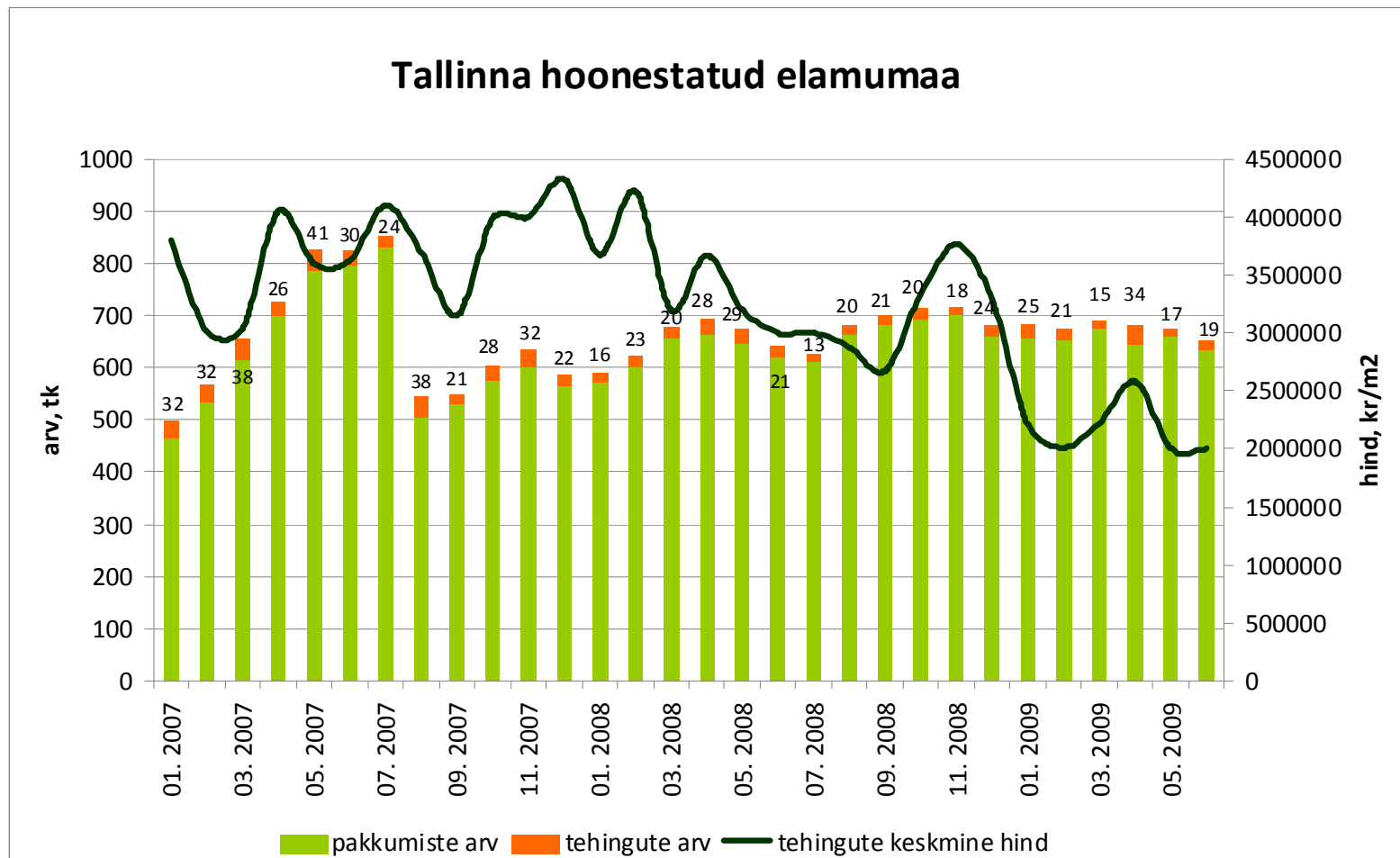
Allikad: Maa-amet, City24

Tehingute arv on langenud 61%,  
tehinguhind 80%



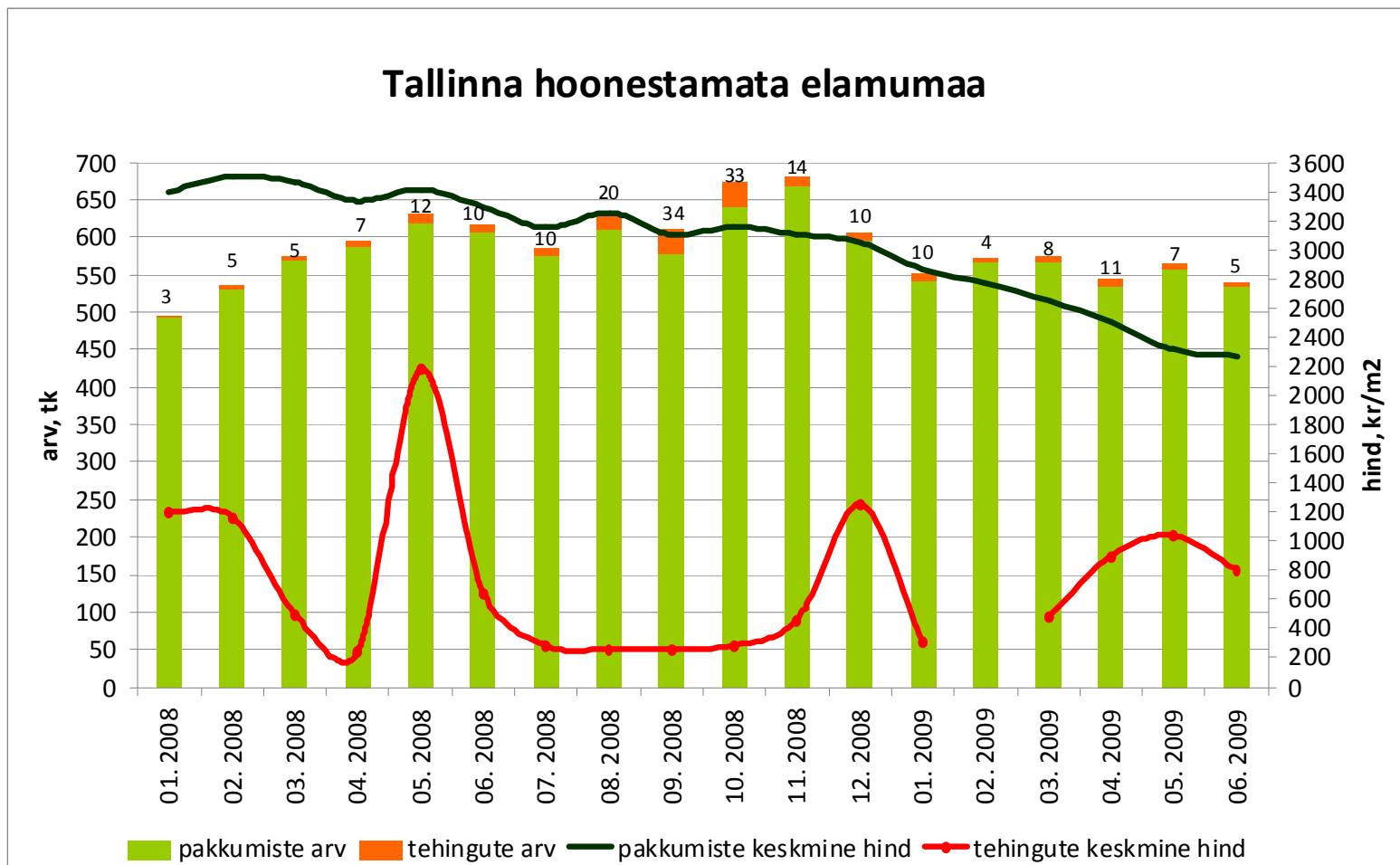
Allikas: Maa-amet, City24

Tehingute arv on 2006.a. märtsist  
langenud 74%, tehinguhind  
2007.a. dets-st 54%



Allikad: Maa-amet, City24

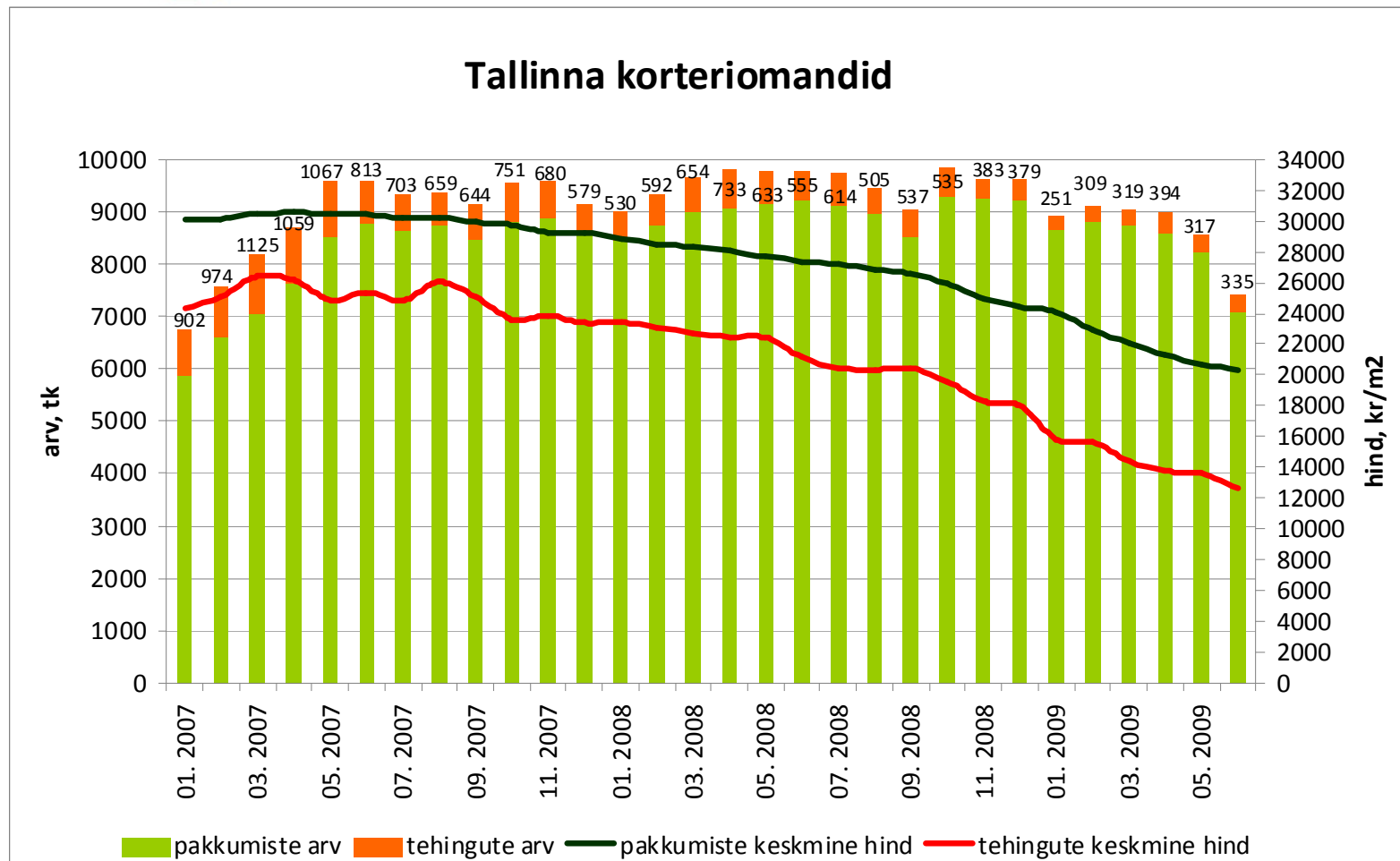
Tehingute arv on 2006.a. maist langenu-  
d 81%, tehinguhind 2007.a.  
juunist 70%



Allikad: Maa-amet, City24

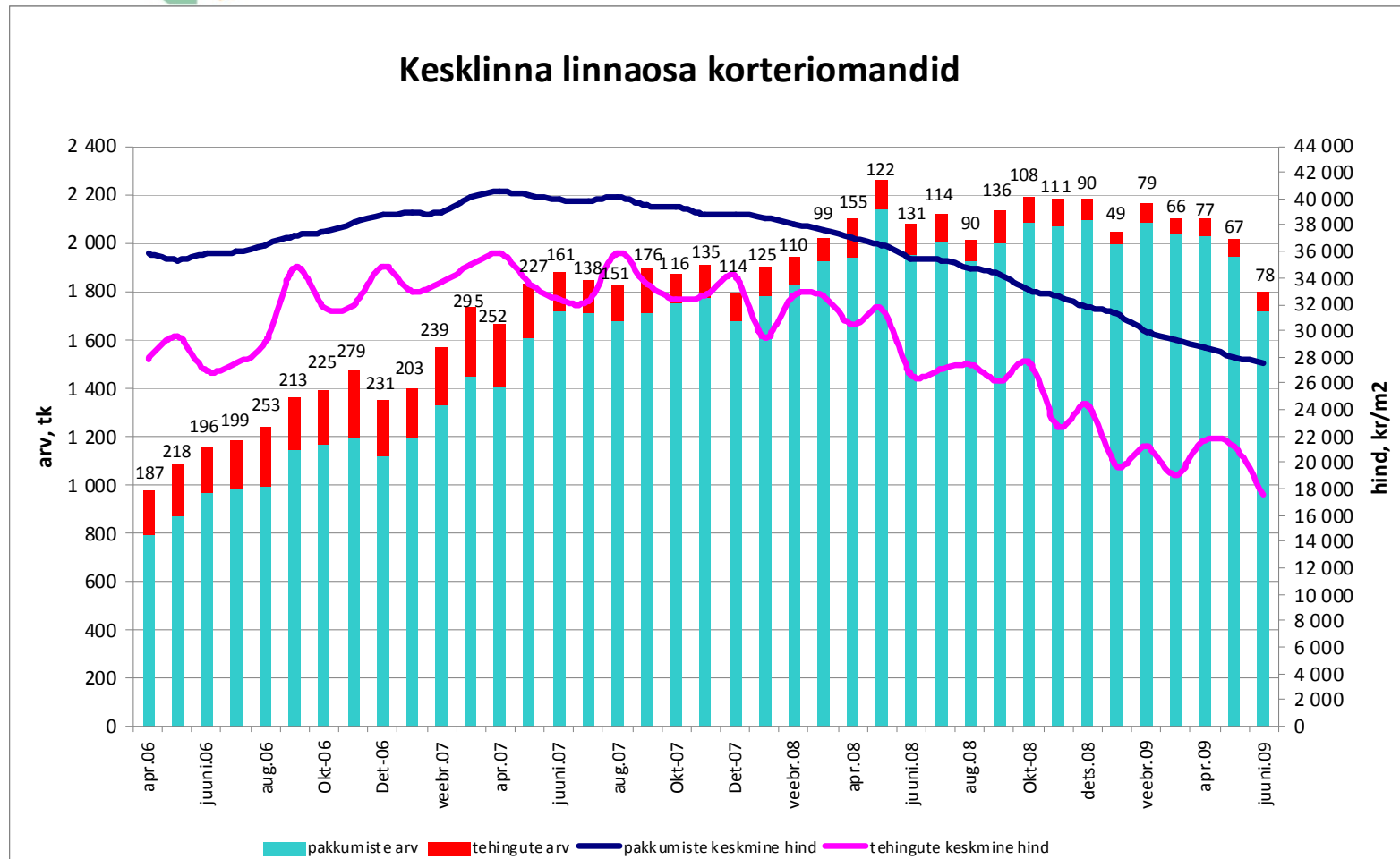


Tehingute arv on langenud 70%,  
tehinguhind 52%



Allikad: Maa-amet, City24

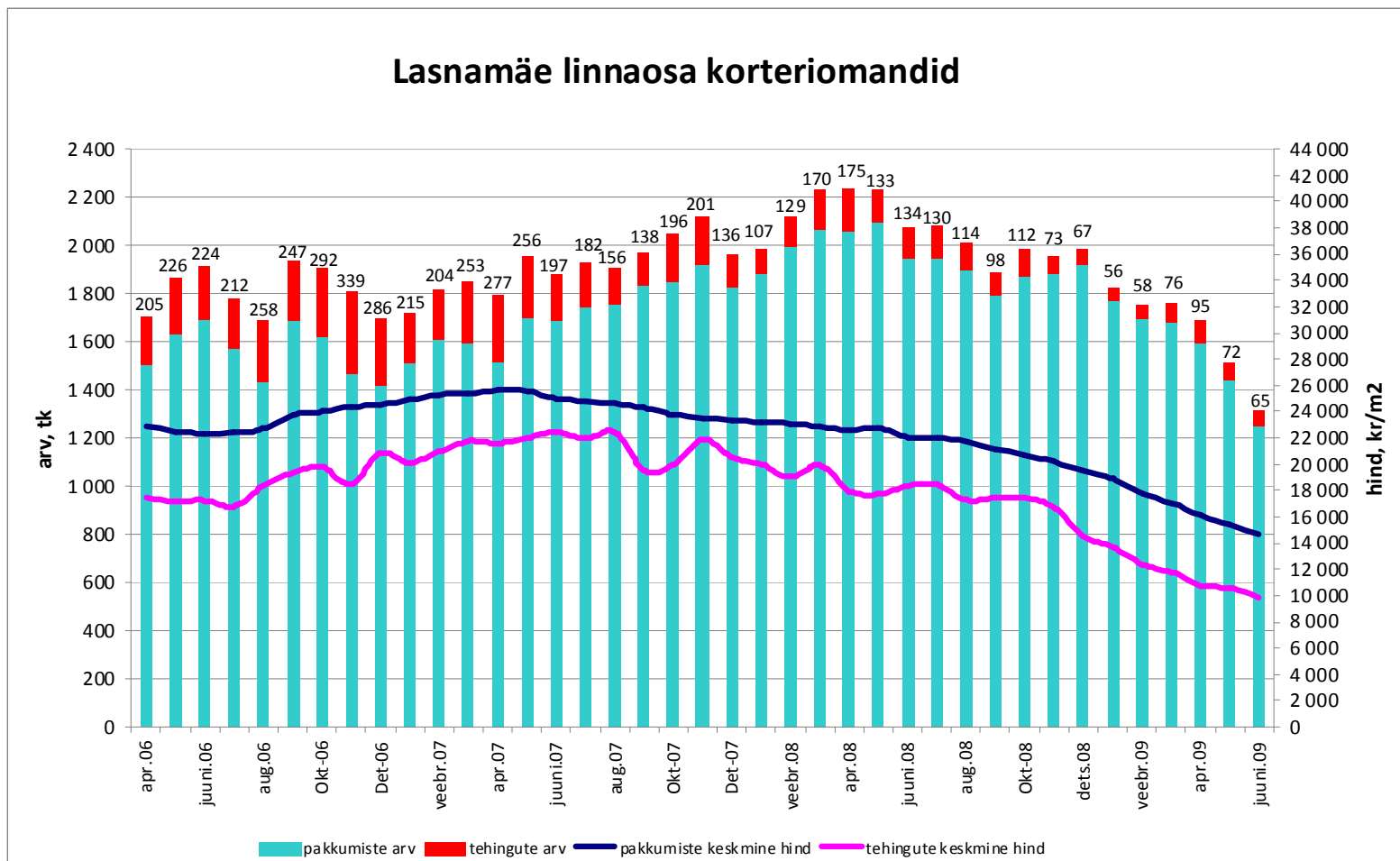
Tehingute arv on langenud 74%,  
tehinguhind 51%



Allikad: Maa-amet, City24

Tehingute arv on langenud 81%,  
tehinguhind 56%

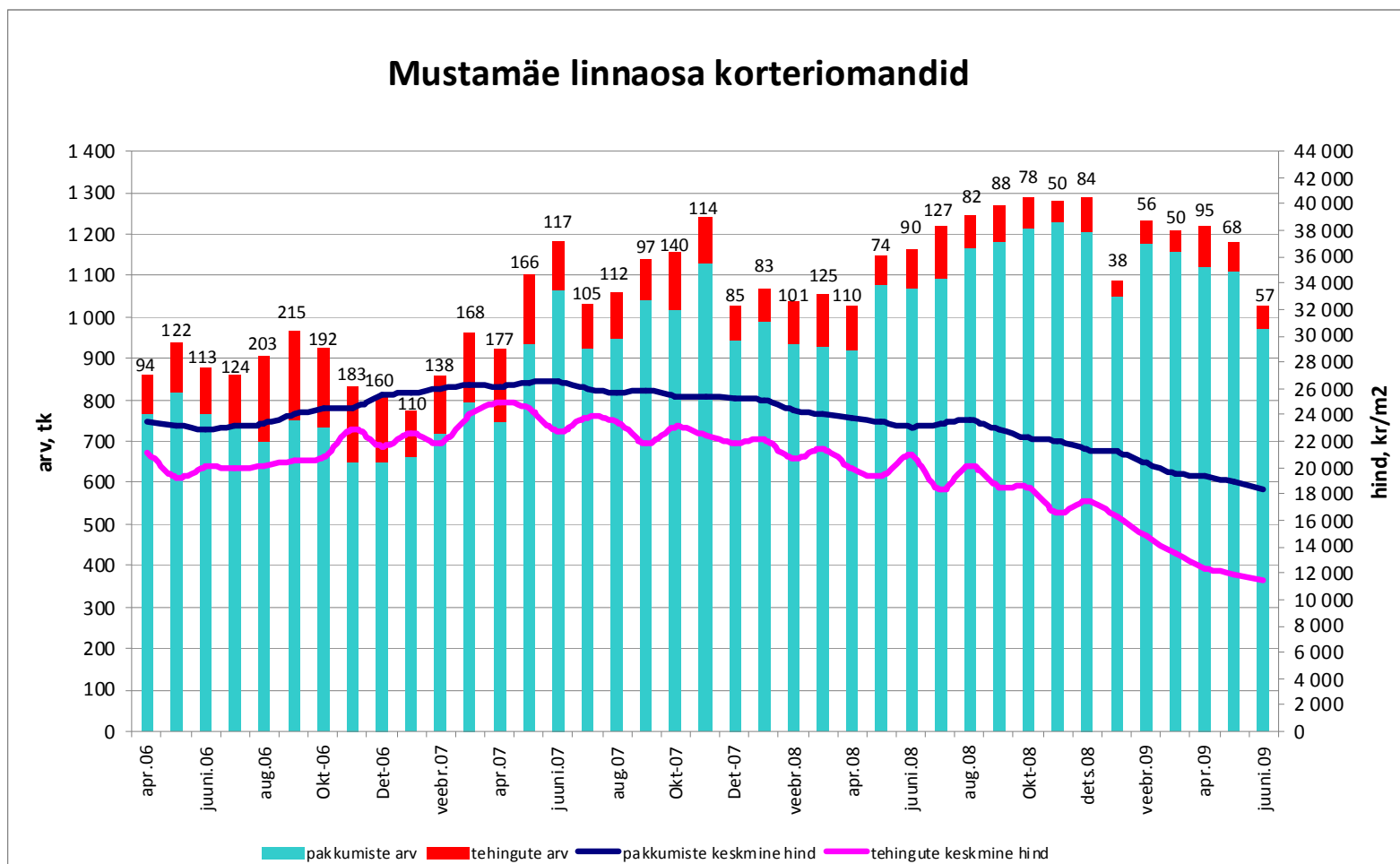
### Lasnamäe linnaosa korteriomandid



Allikad: Maa-amet, City24

Tehingute arv on langenud 73%,  
tehinguhind 54%

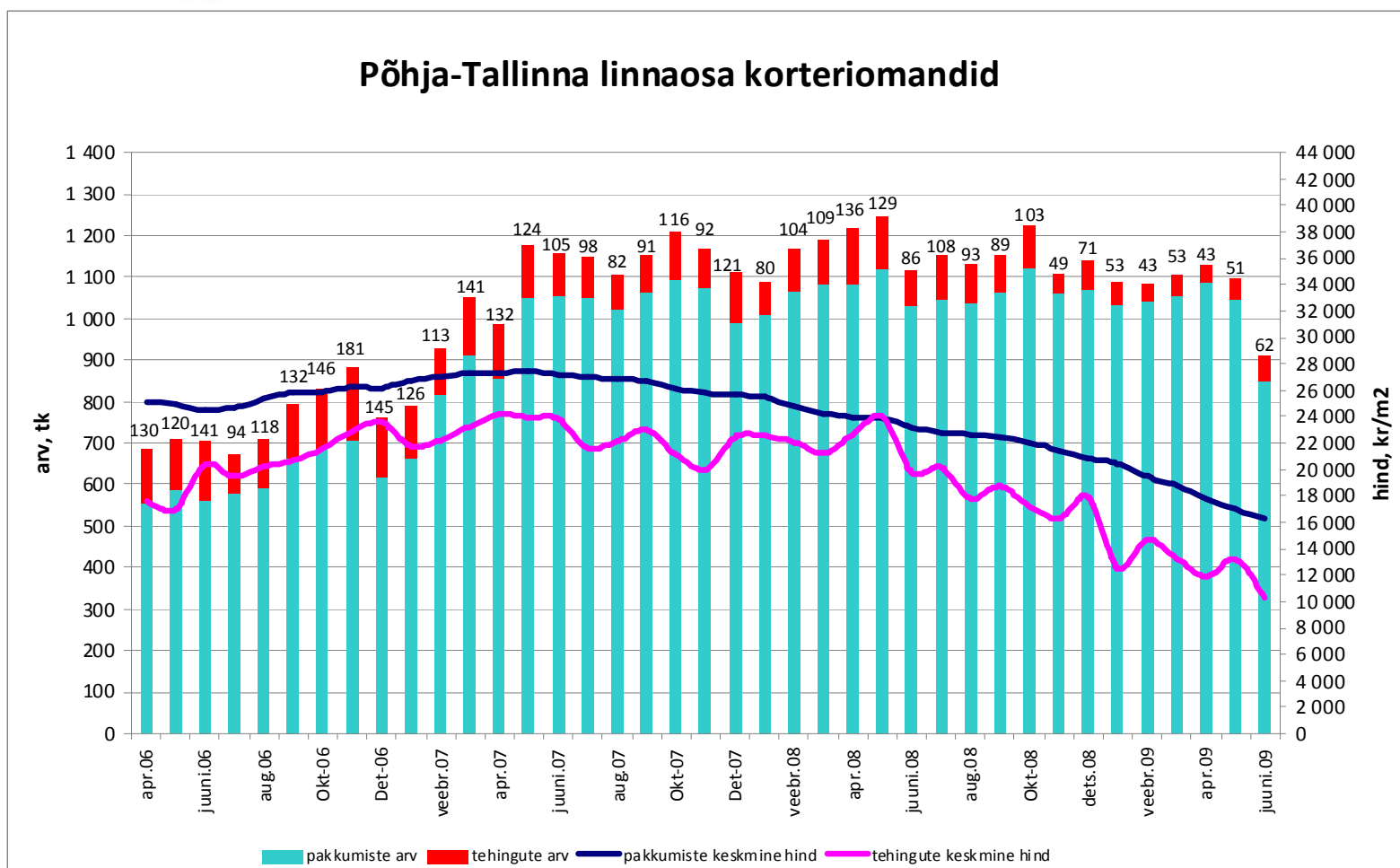
### Mustamäe linnaosa korteriomandid



Allikad: Maa-amet, City24

Tehingute arv on langenud 66%,  
tehinguhind 57%

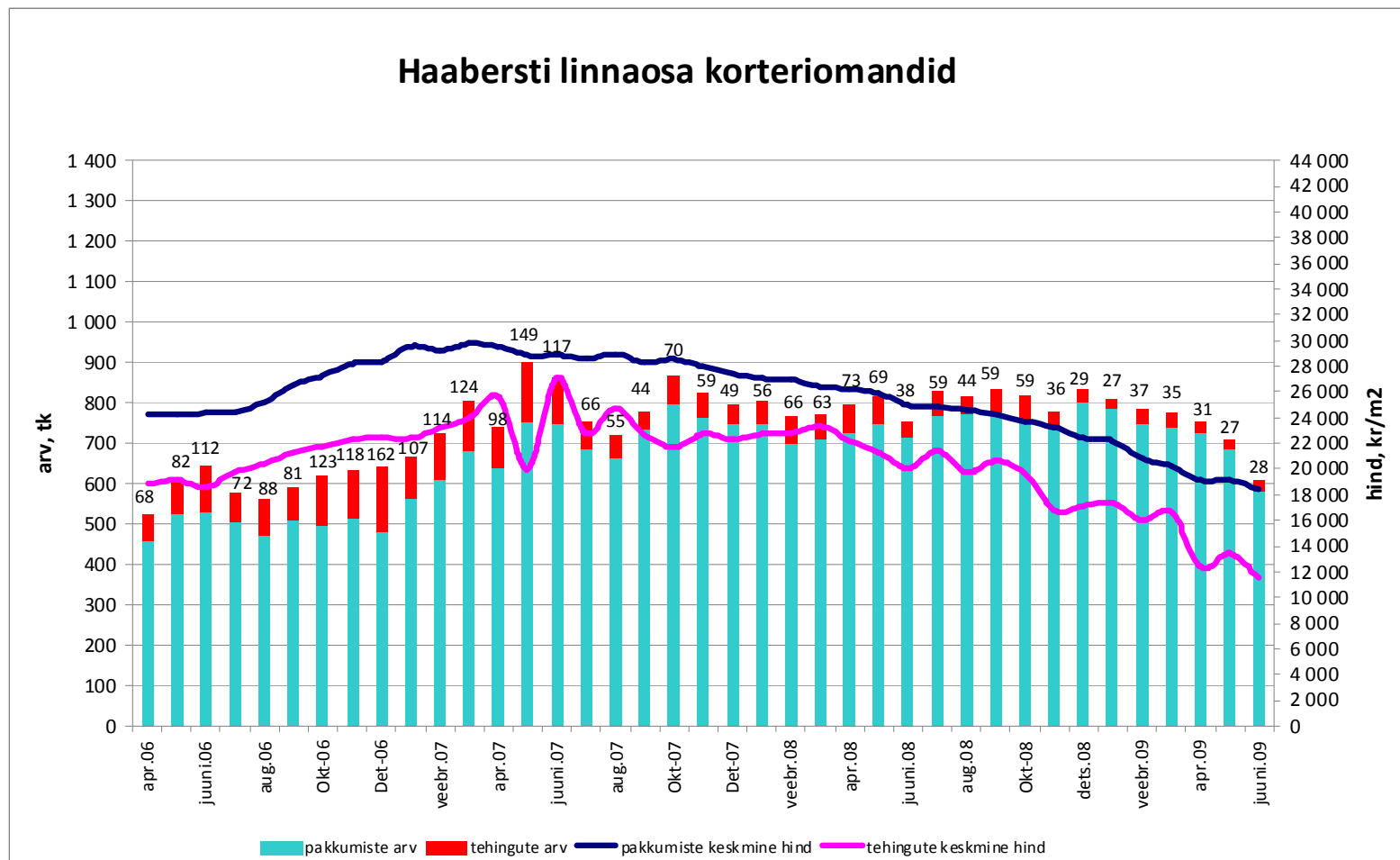
### Põhja-Tallinna linnaosa korteriomandid



Allikad: Maa-amet, City24

Tehingute arv on langenud 83%,  
tehinguhind 58%

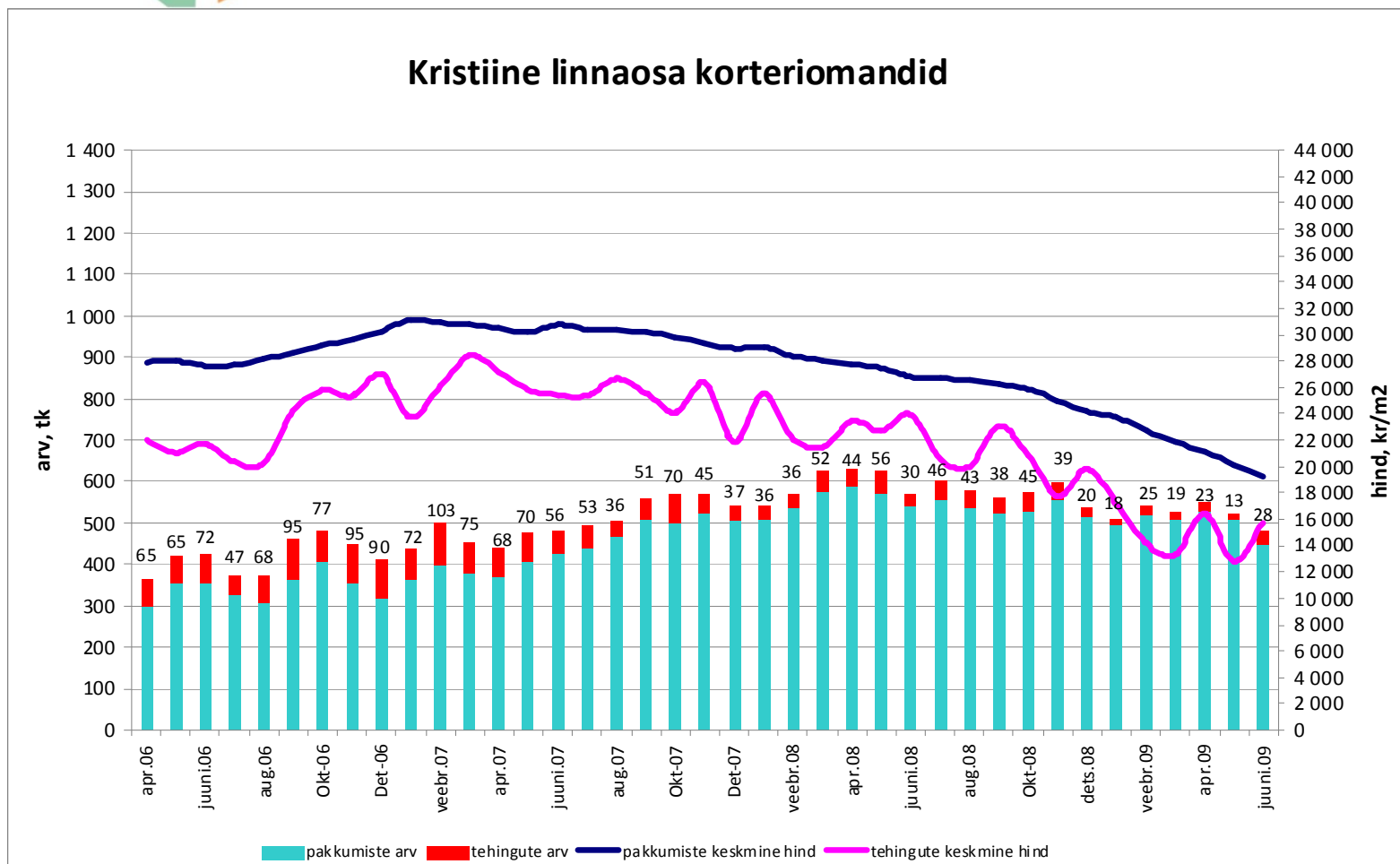
### Haabersti linnaosa korteriomandid



Allikad: Maa-amet, City24

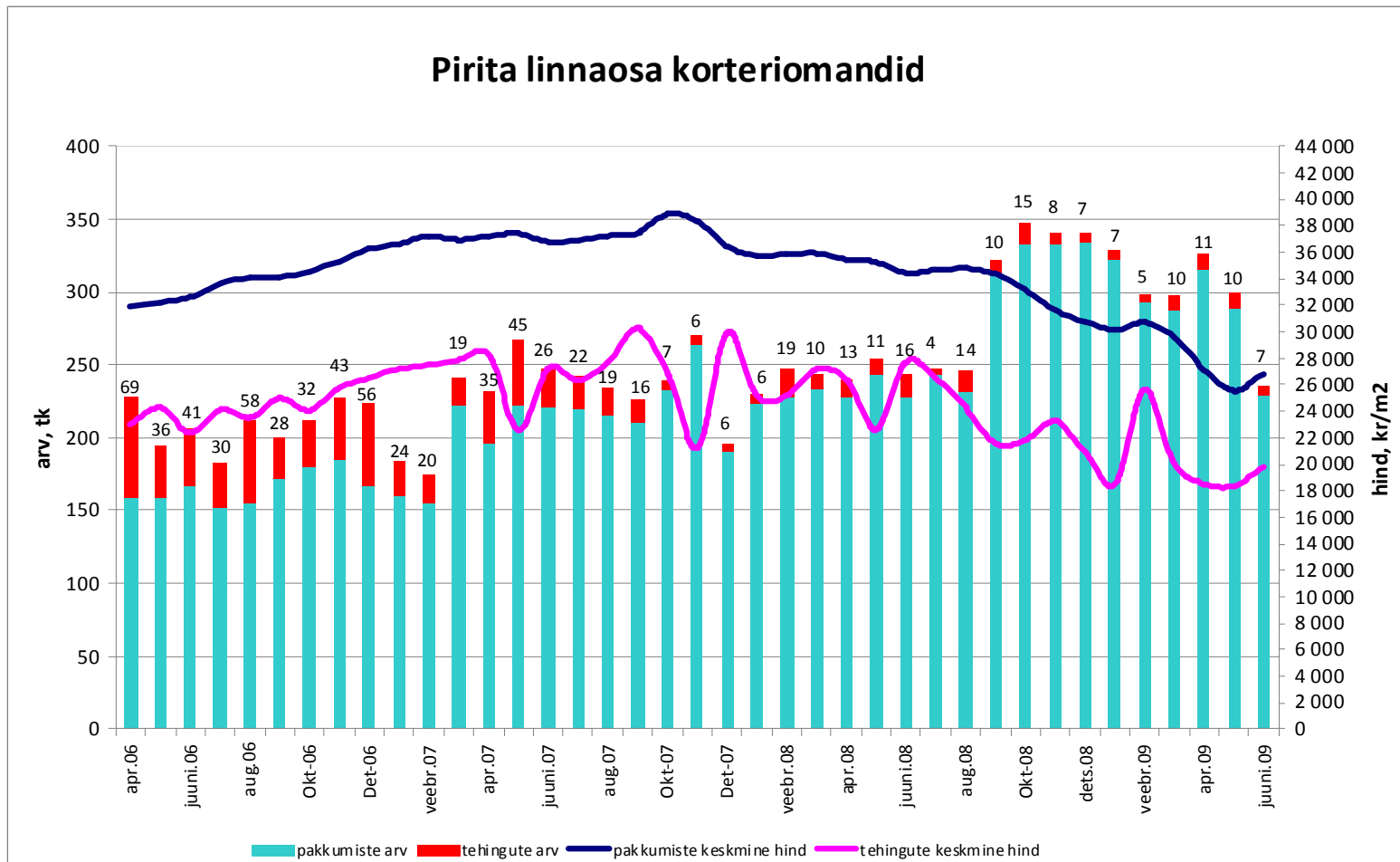
Tehingute arv on langenud 73%,  
tehinguhind 45%

### Kristiine linnaosa korteriomandid



Allikad: Maa-amet, City24

Tehingute arv on langenud 90%,  
tehinguhind 35%

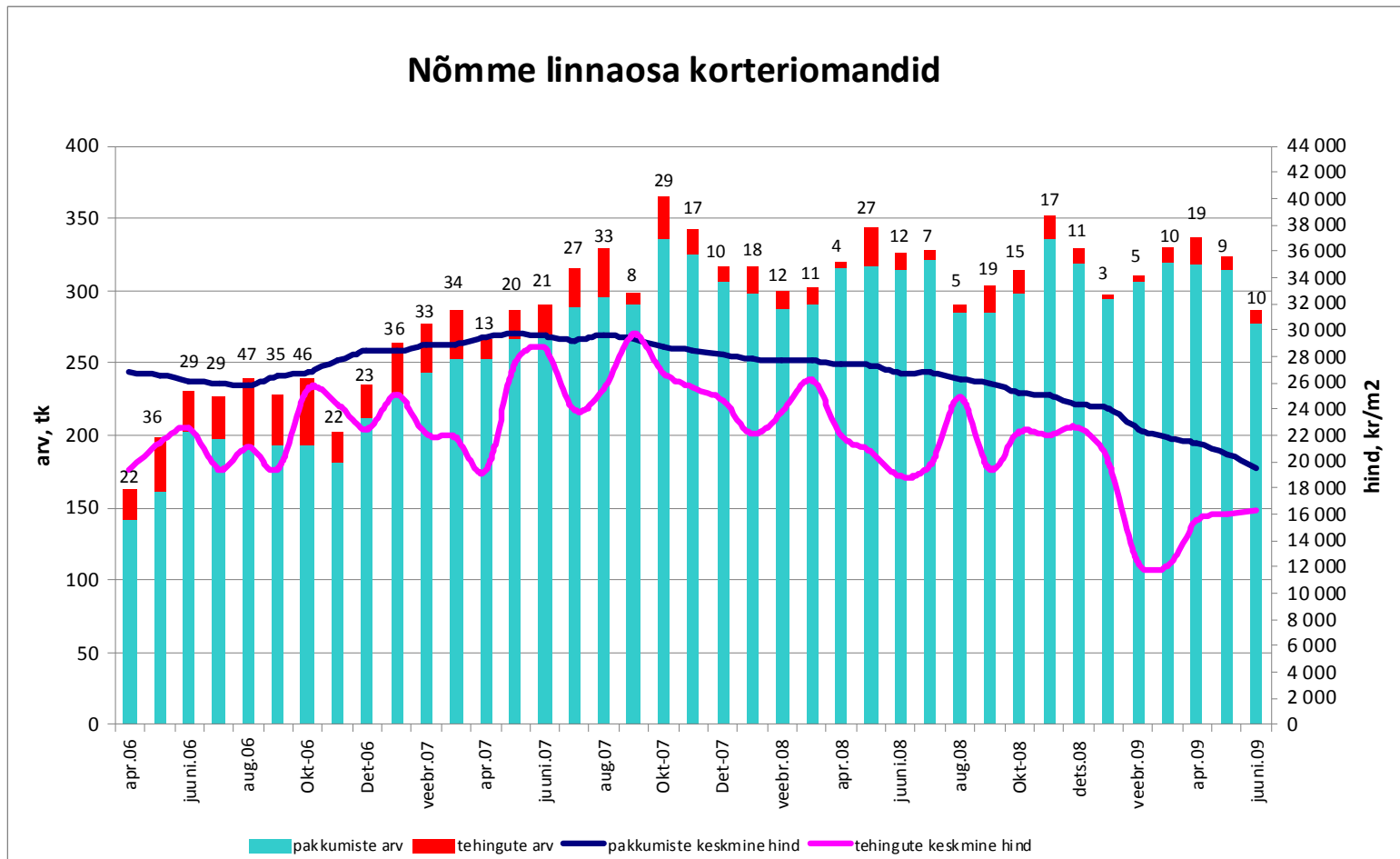


Allikad: Maa-amet, City24



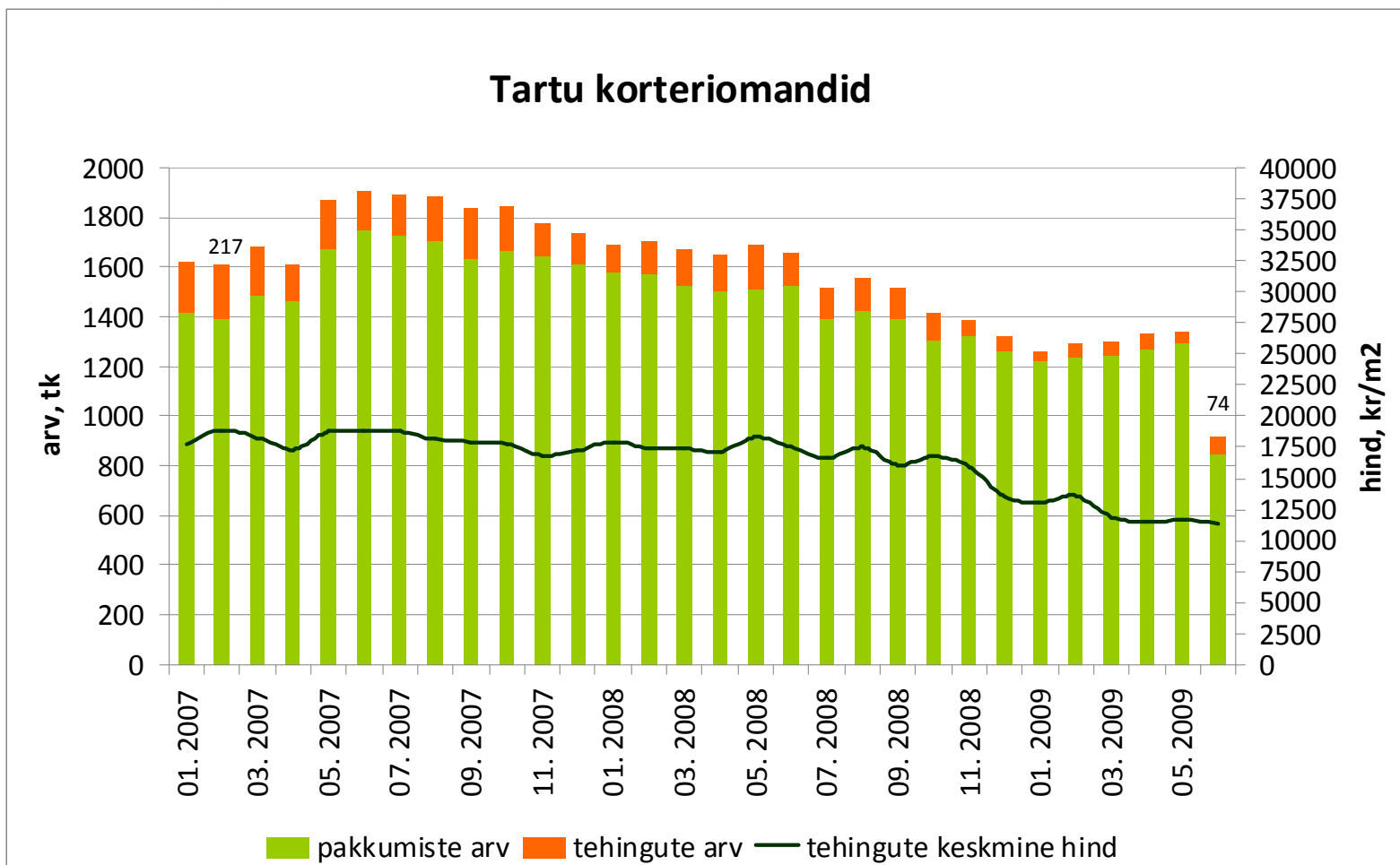
Tehingute arv on langenud 79%,  
tehinguhind 45%

### Nõmme linnaosa korteriomandid



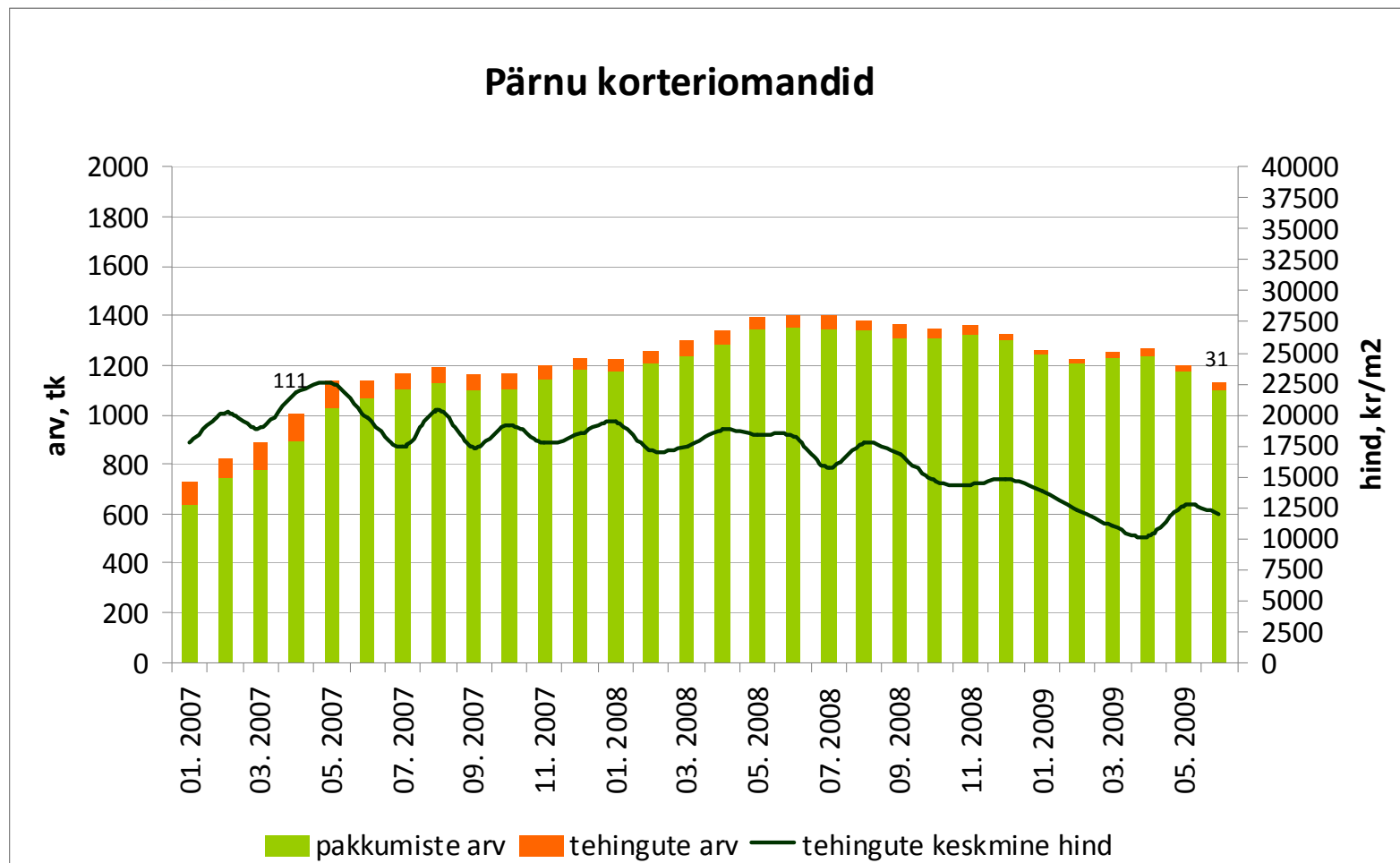
Allikad: Maa-amet, City24

Tehingute arv on langenud 66%,  
tehinguhind 40%



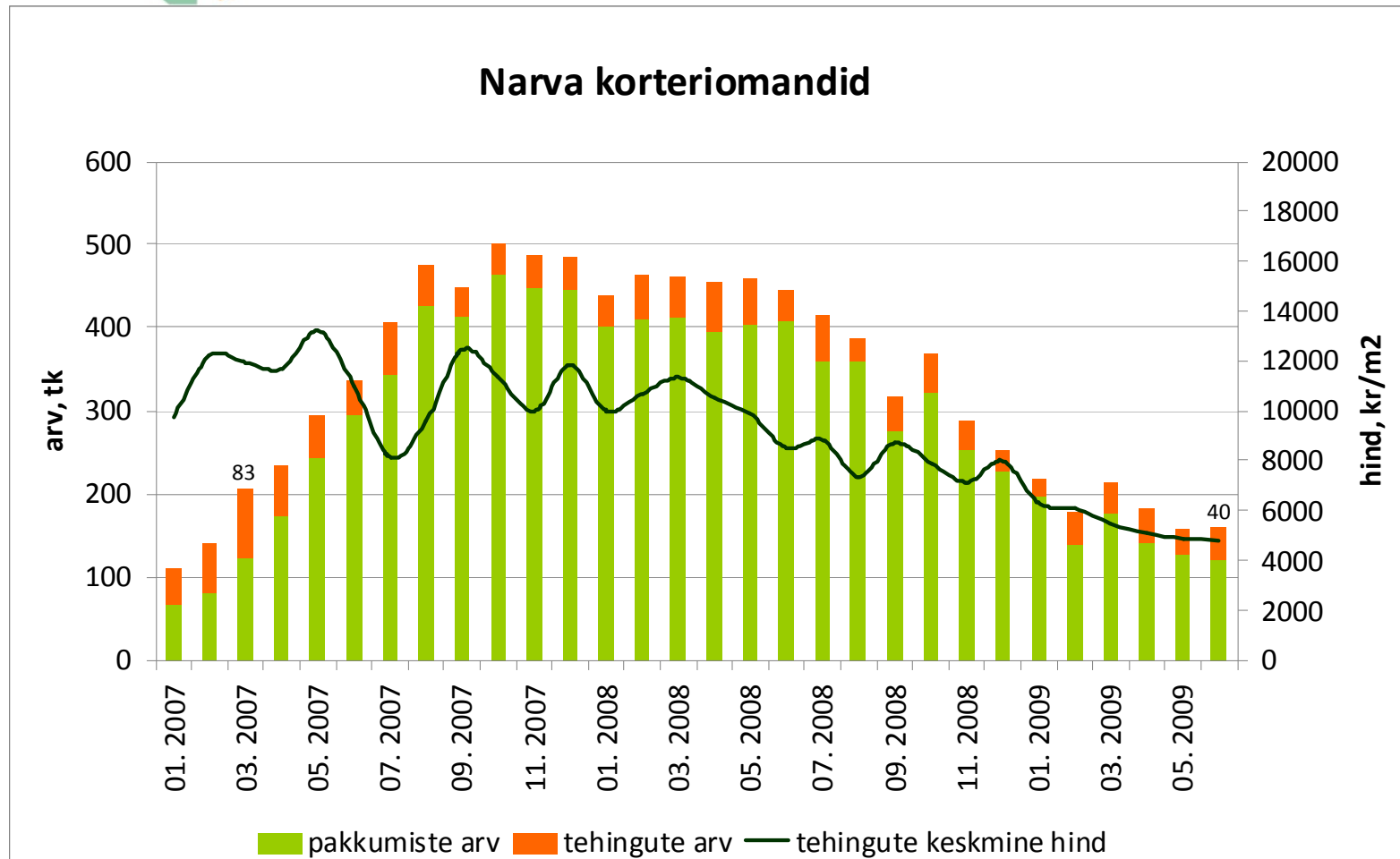
Allikad: Maa-amet, City24

Tehingute arv on langenud 72%,  
tehinguhind 47%



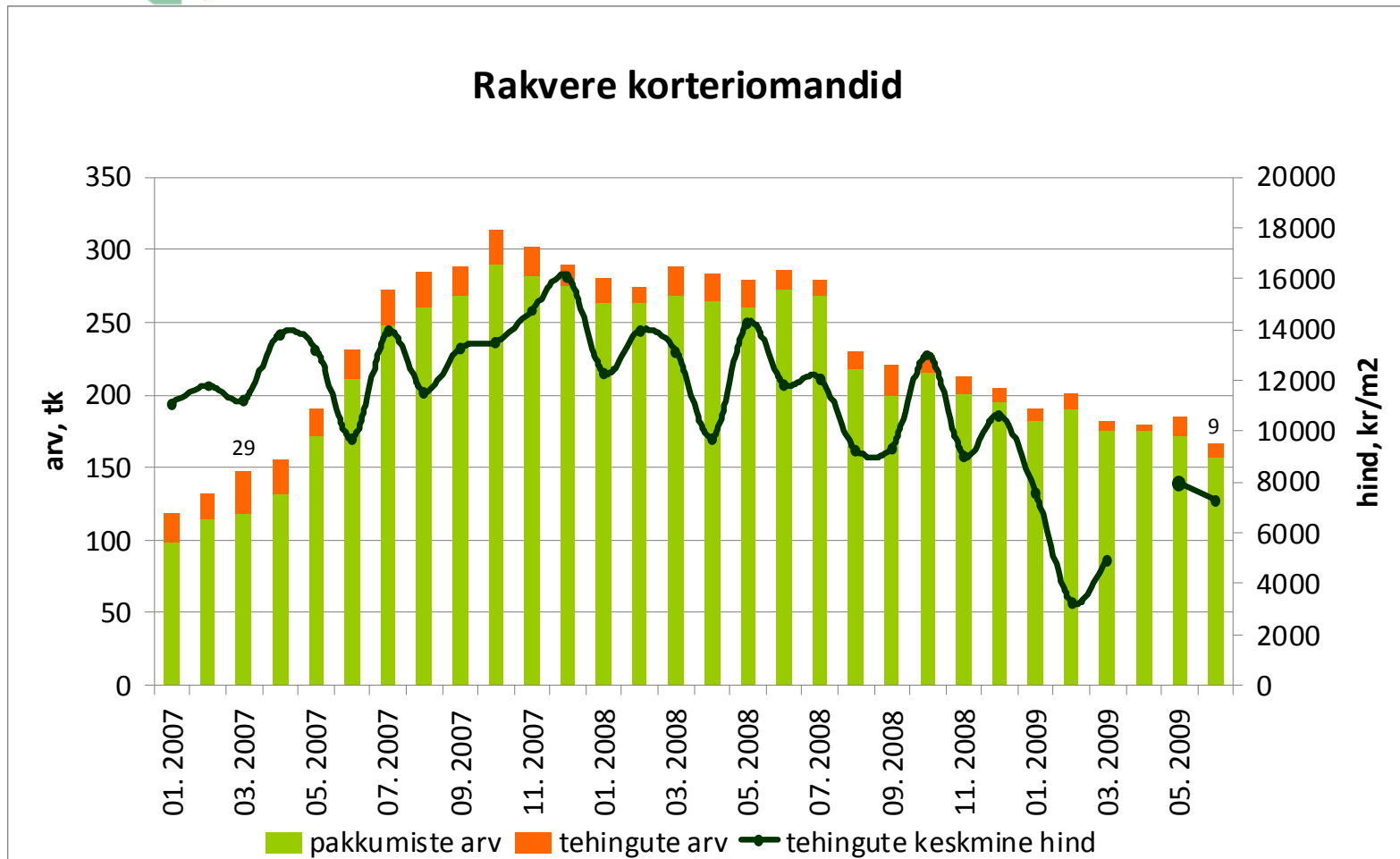
Allikad: Maa-amet, City24

Tehingute arv on langenud 52%,  
tehinguhind 64%



Allikad: Maa-amet, City24

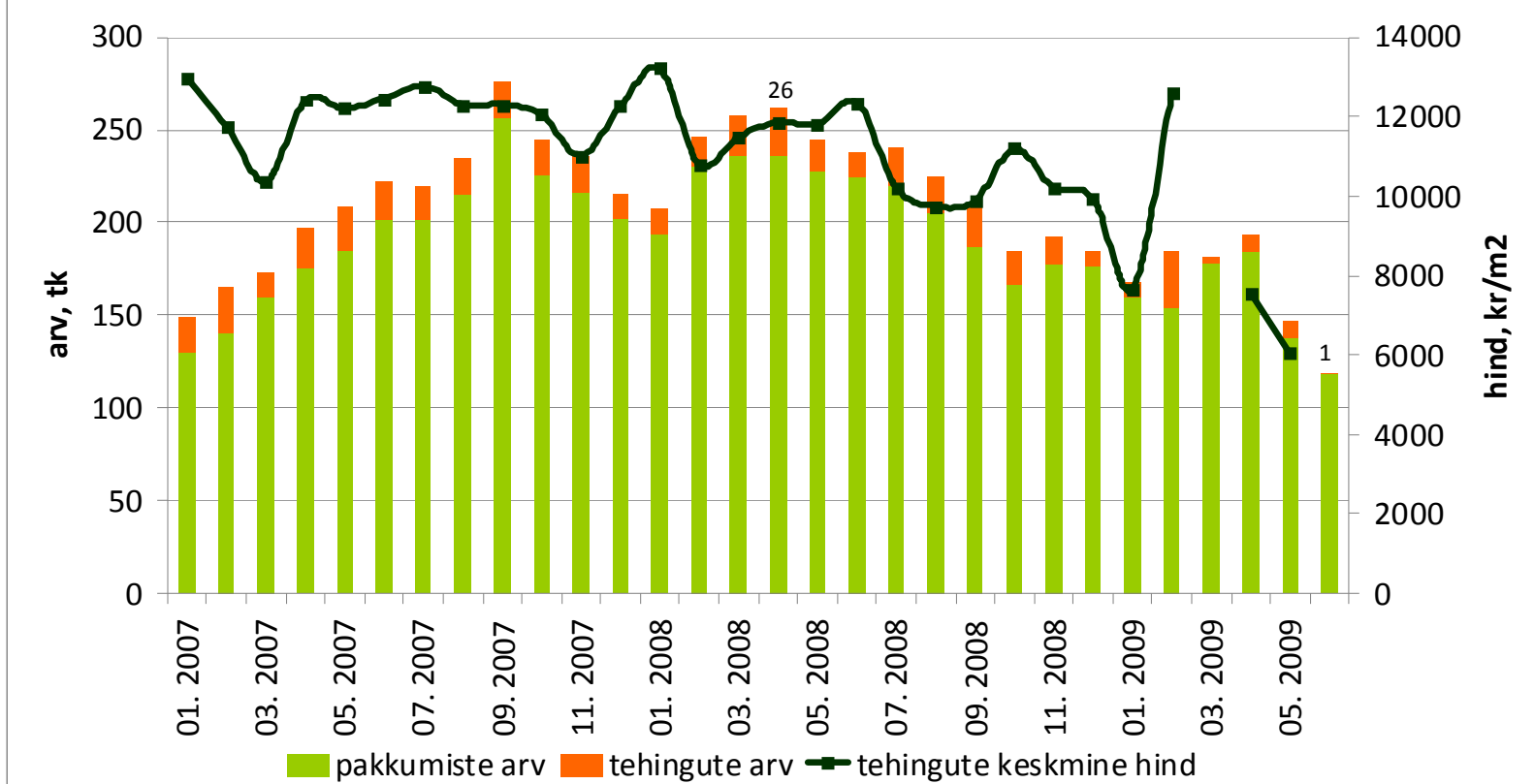
Tehingute arv on langenud 69%,  
tehinguhind 55%



Allikad: Maa-amet, City24

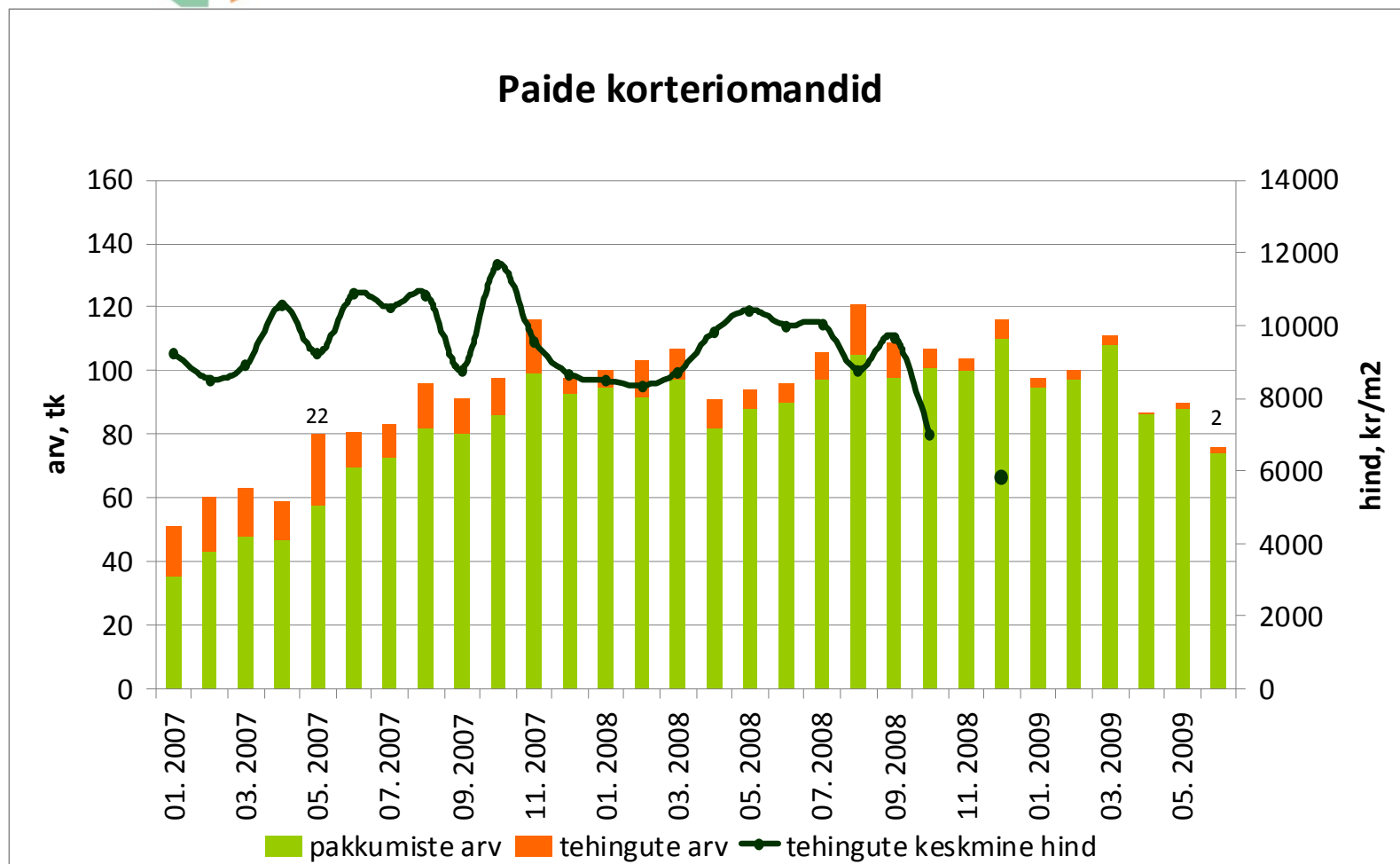
Tehingute arv on langenud 96%,  
tehinguhind 54%

### Viljandi korteriomandid



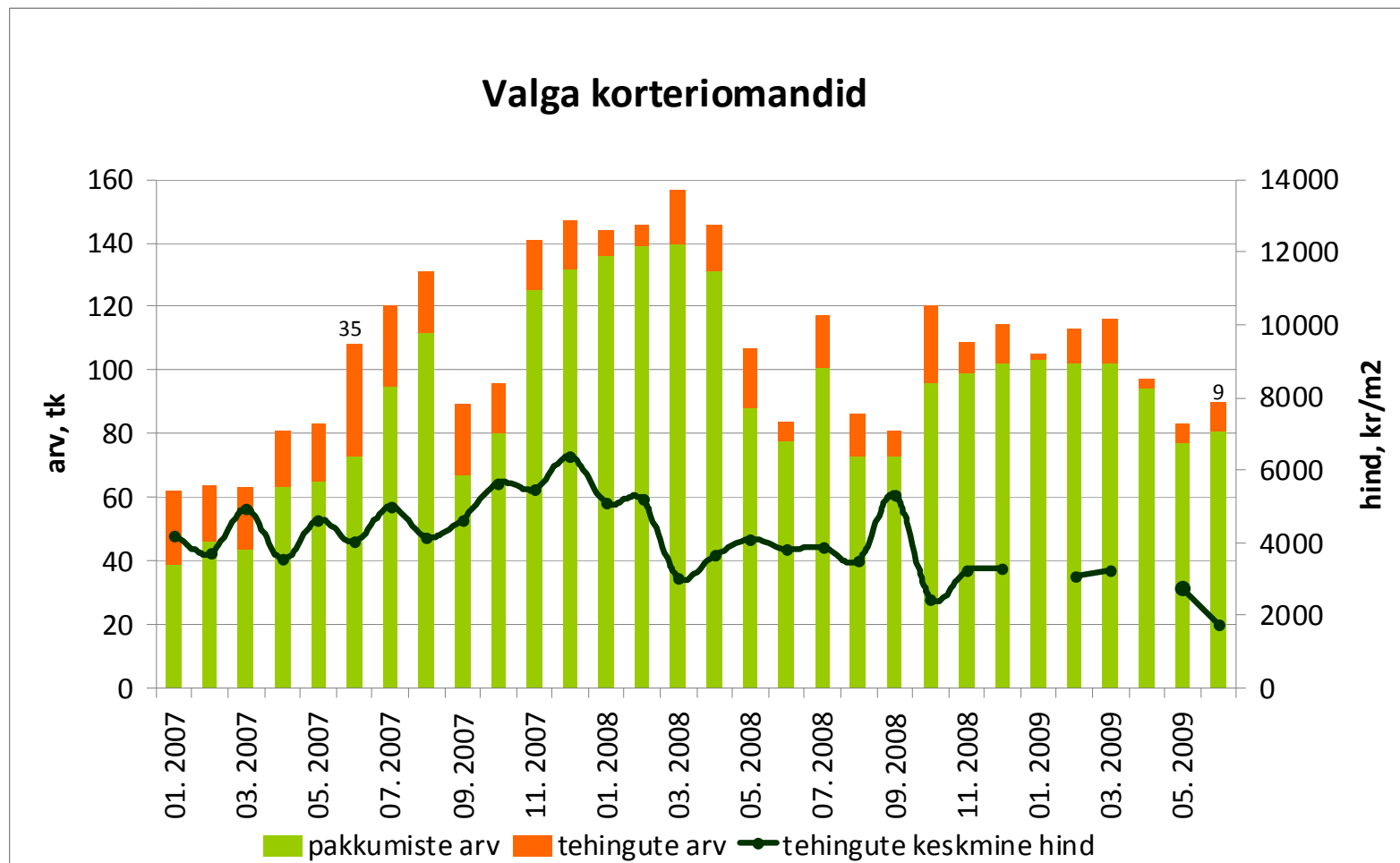
Allikad: Maa-amet, City24

Tehingute arv on langenud 91%,  
tehinguhind ca 50%



Allikad: Maa-amet, City24

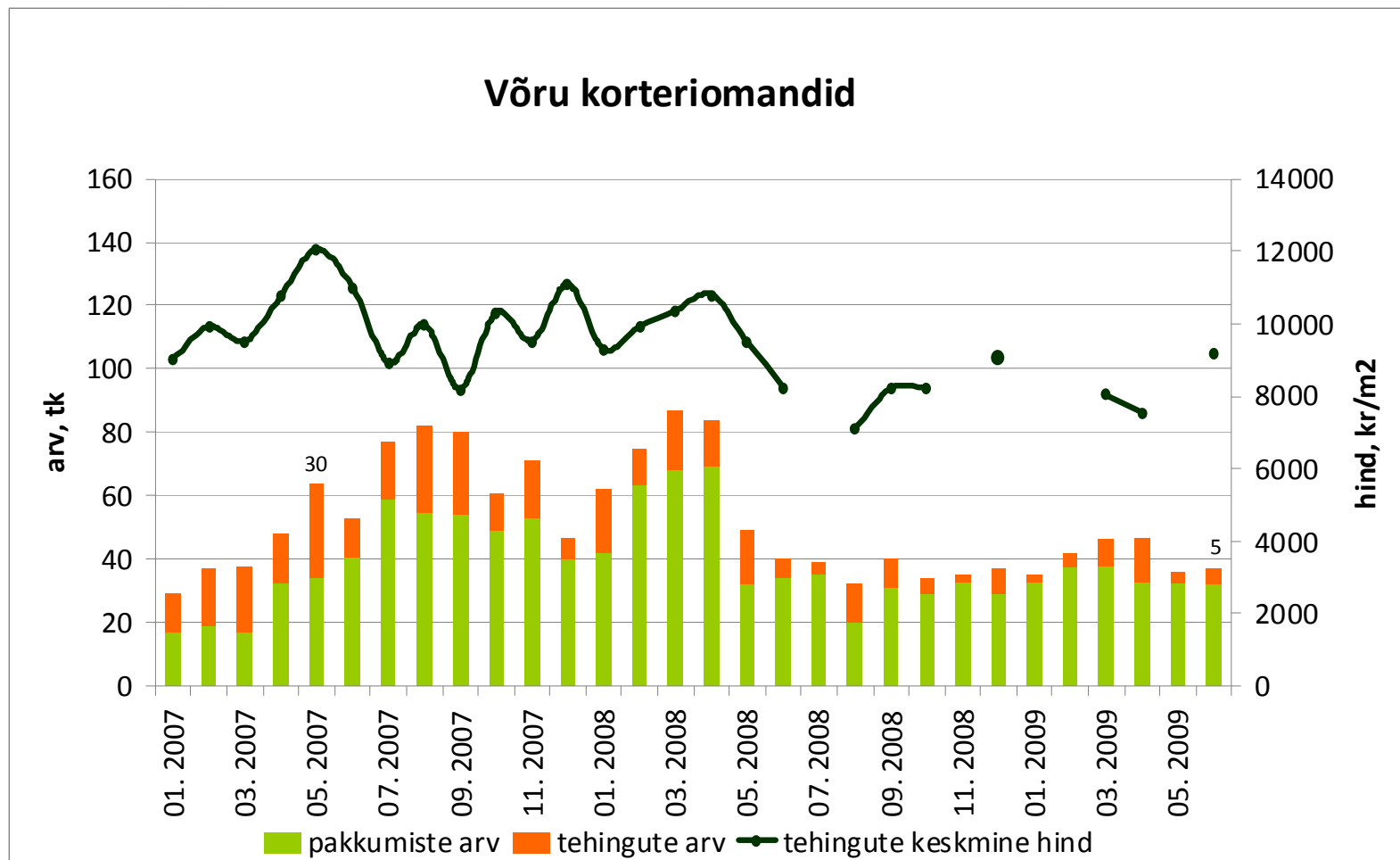
Tehingute arv on langenud 74%  
tehinguhind 73%



Allikad: Maa-amet, City24

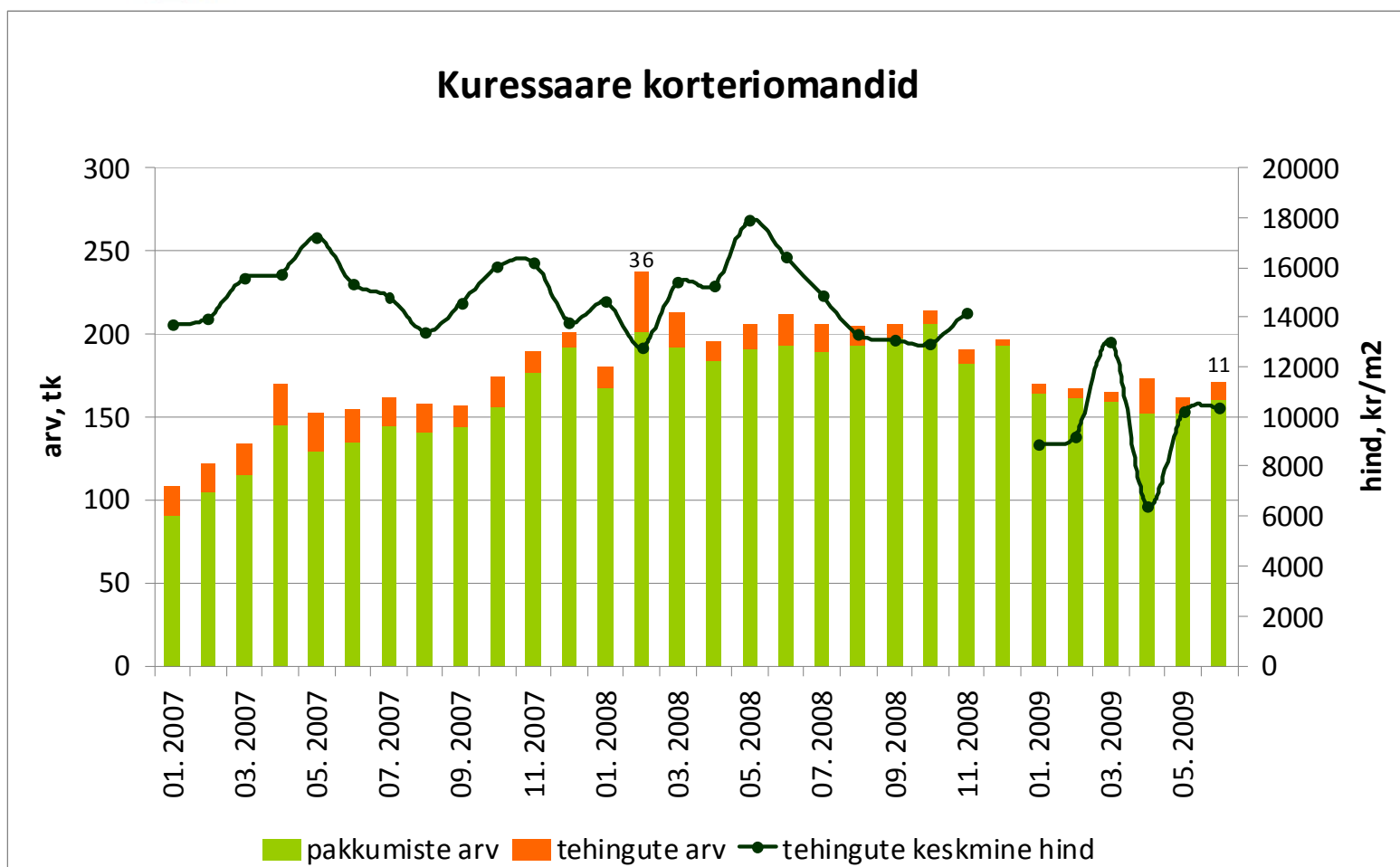


Tehingute arv on langenud 83%  
tehinguhind 24%



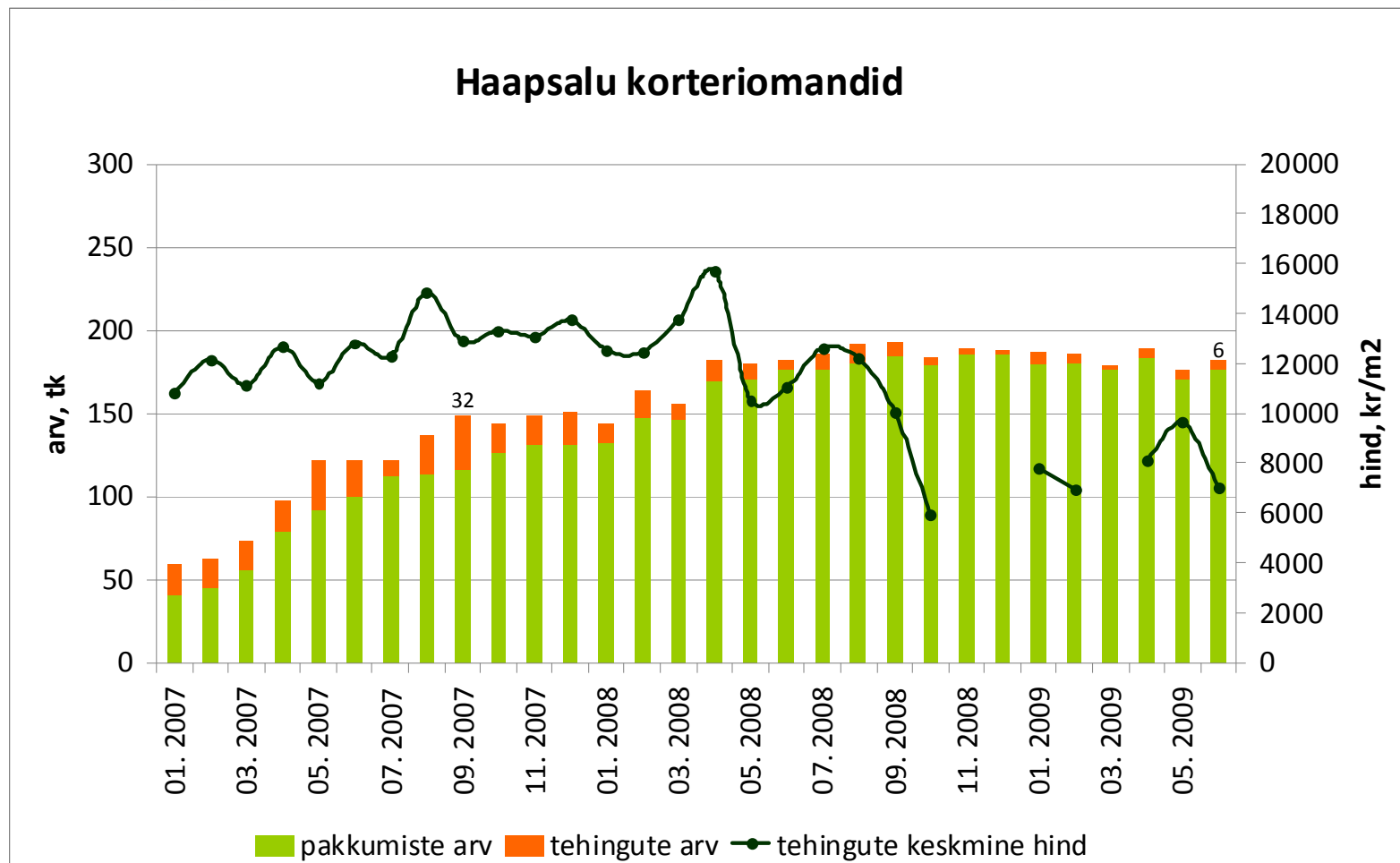
Allikad: Maa-amet, City24

Tehingute arv on langenud 70%  
tehinguhind 42%



Allikad: Maa-amet, City24

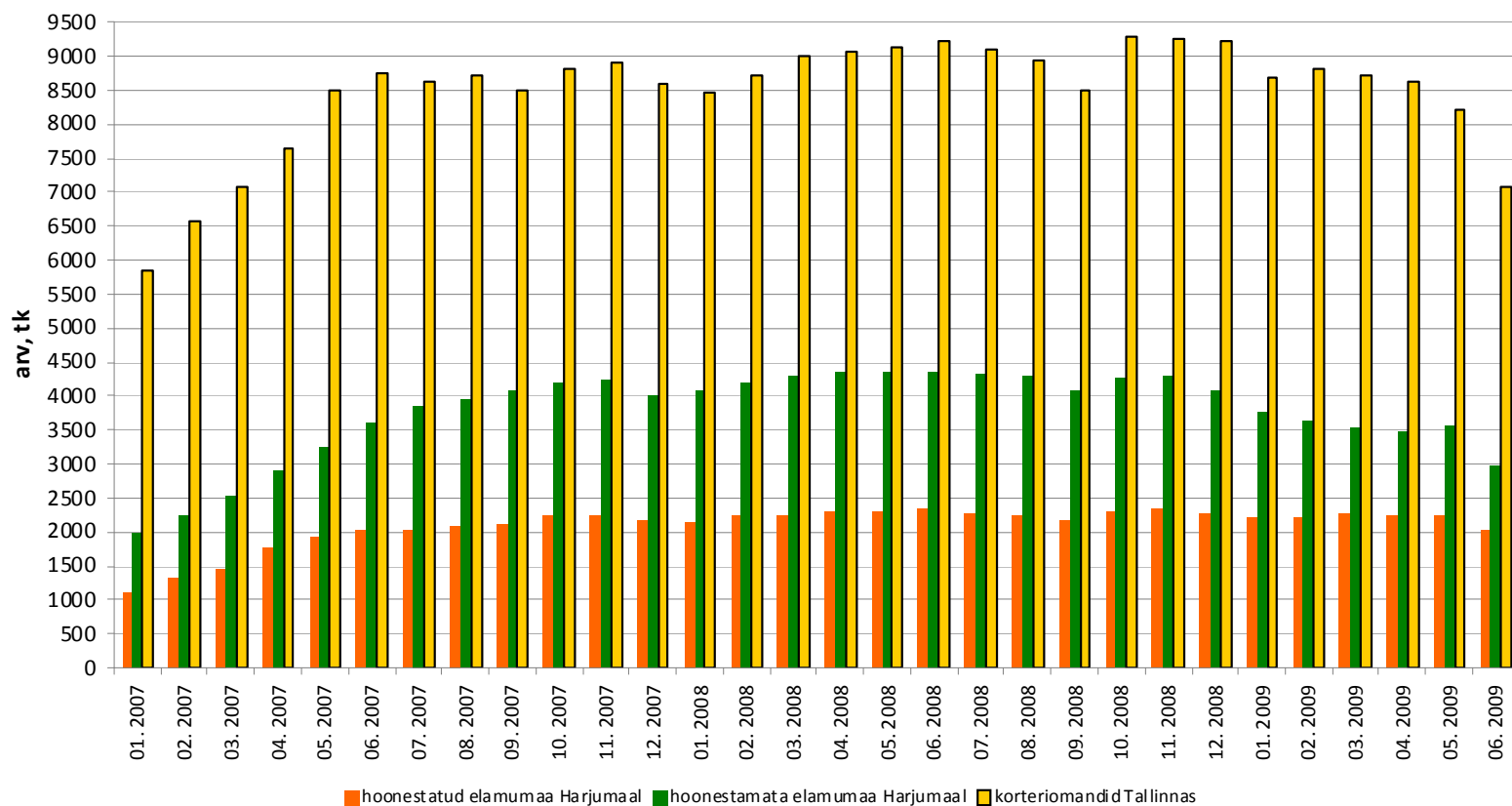
Tehingute arv on langenud 81%  
tehinguhind ca 55%



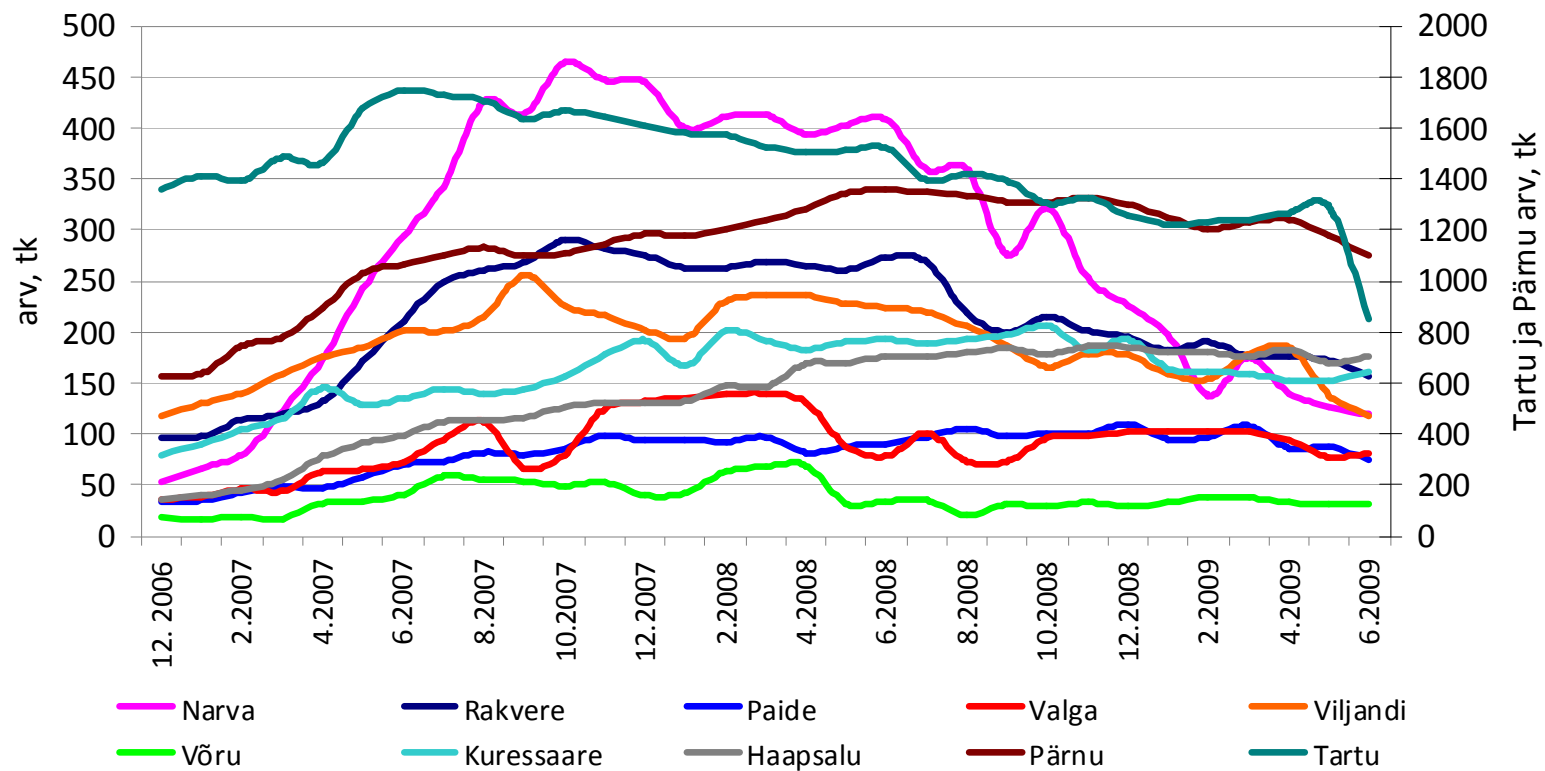
Allikad: Maa-amet, City24



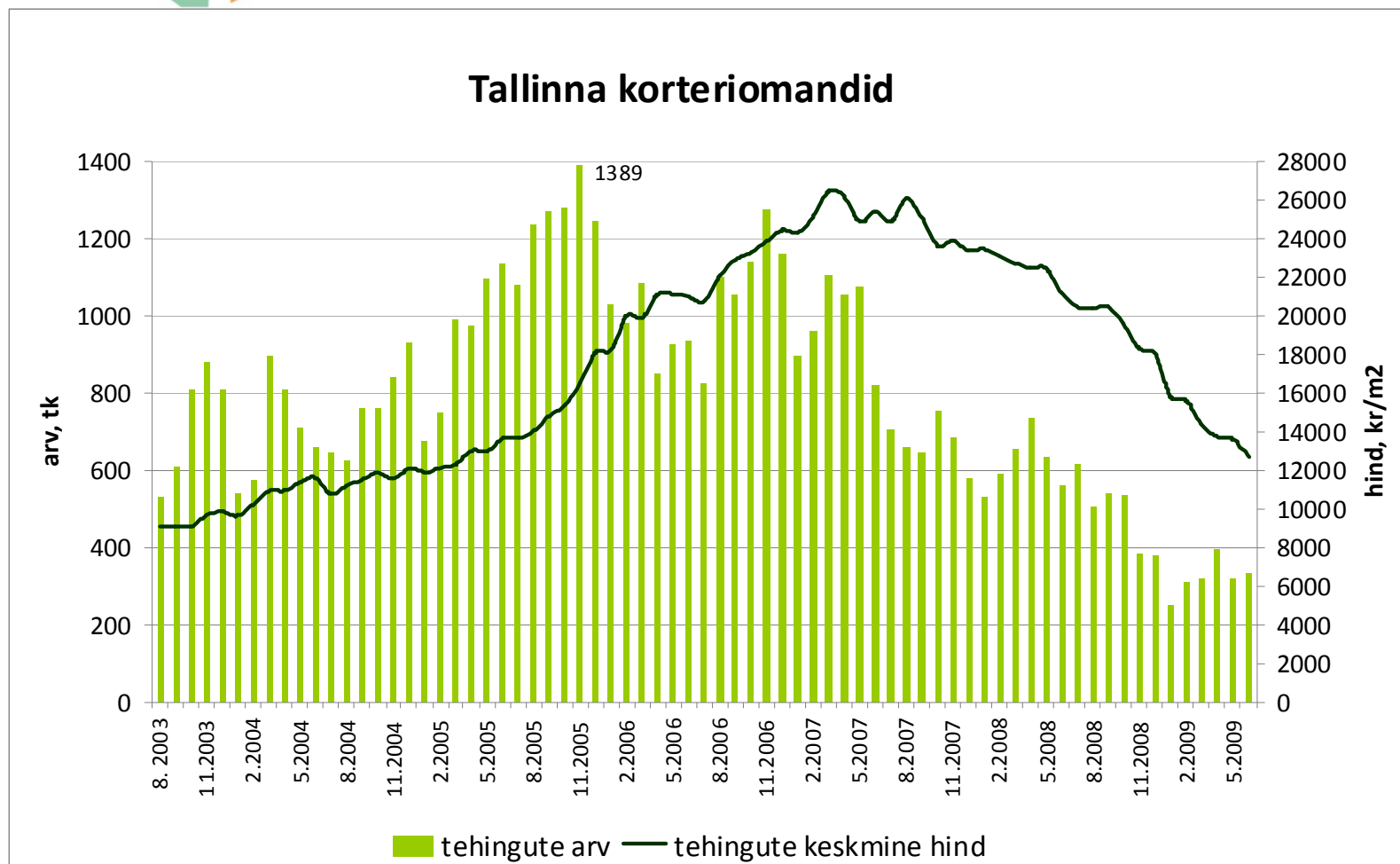
## Elukondliku kinnisvara pakkumiste arv



### Korteriomandite pakkumiste arv Eesti linnades (City24 baasil)

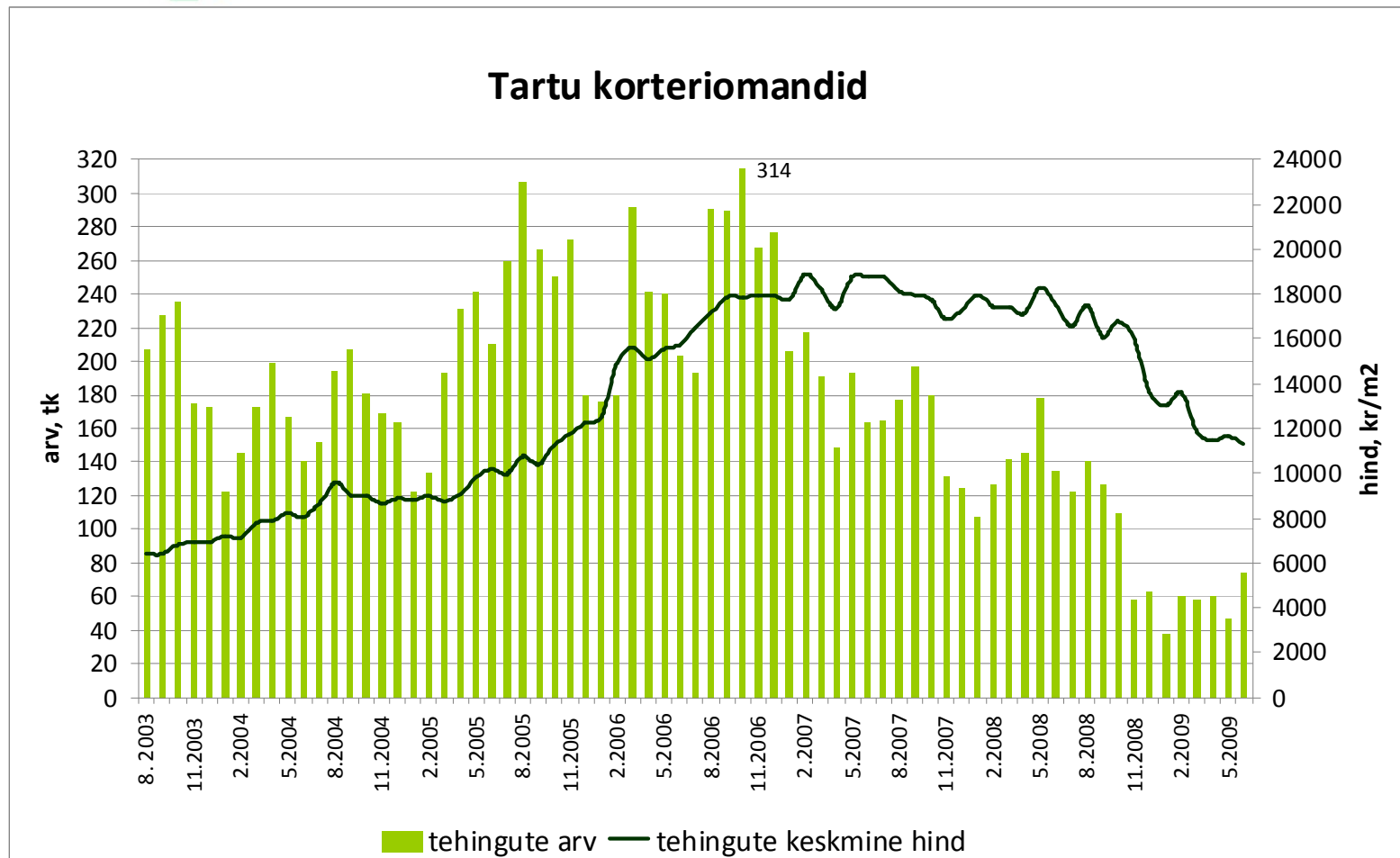


Tehingute arv on langenud 77%,  
tehinguhind 52%



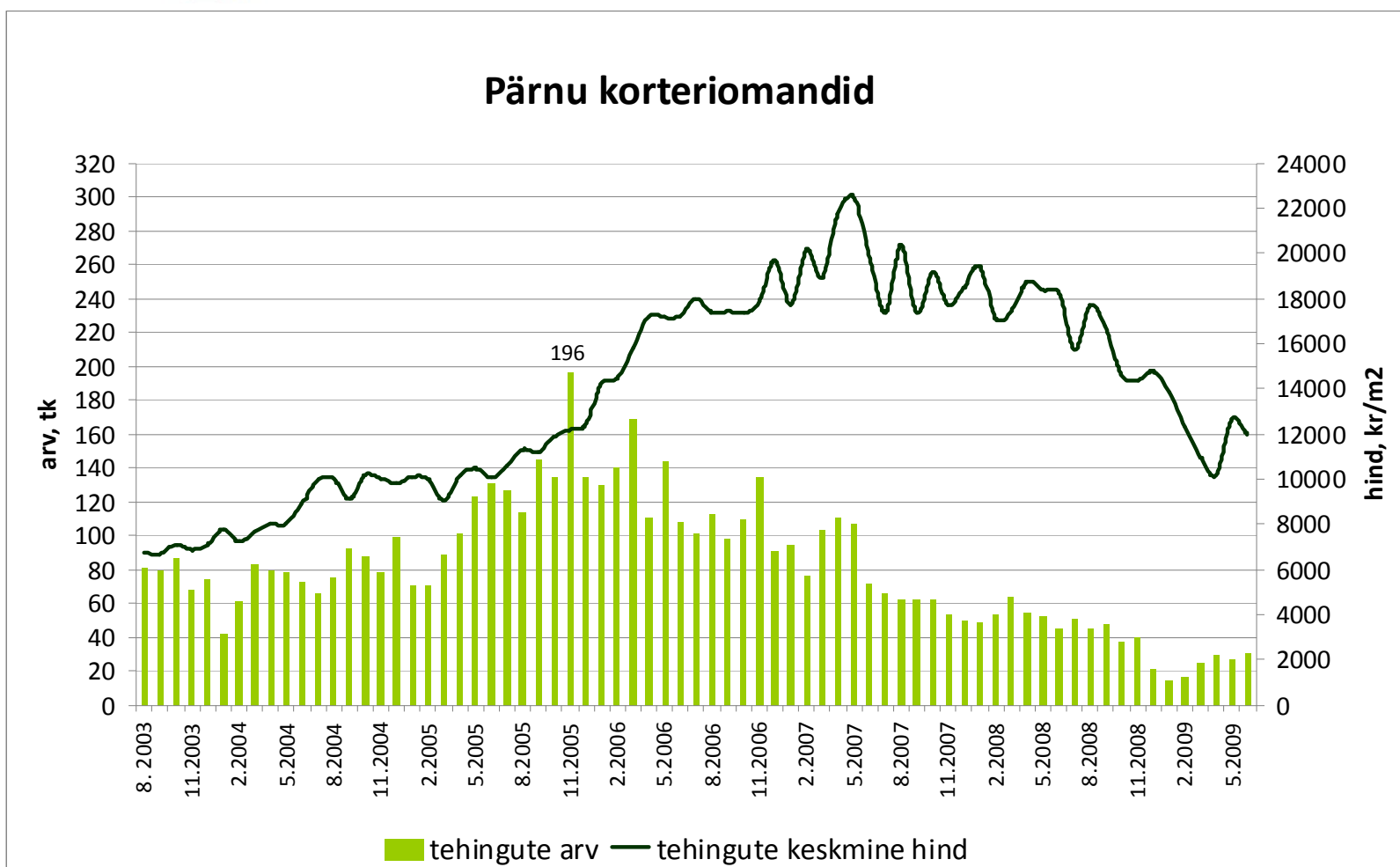
Allikas: Maa-amet

Tehingute arv on langenud 76%,  
tehinguhind 40%



Allikas: Maa-amet

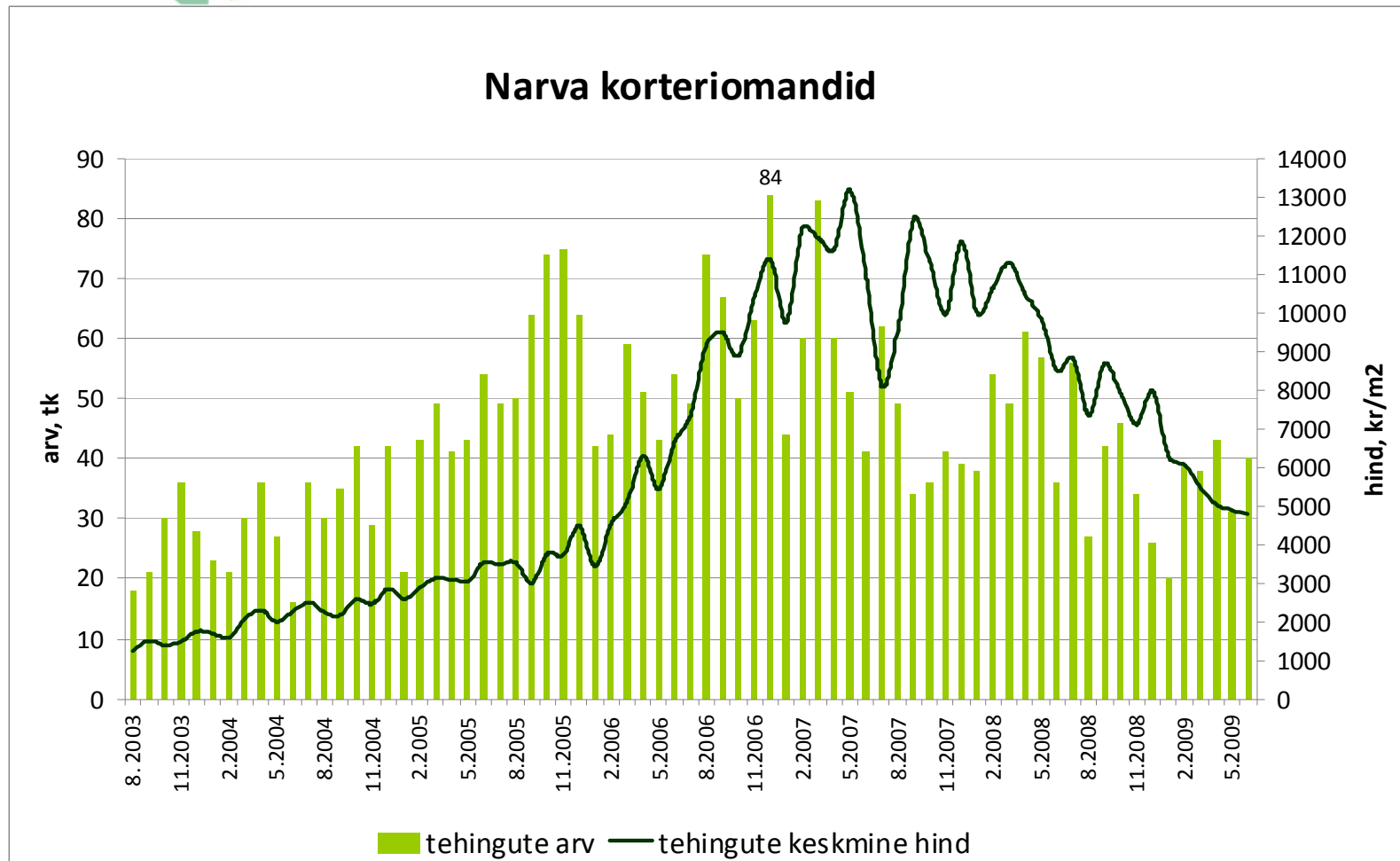
Tehingute arv on langenud 84%,  
tehinguhind 47%



Allikas: Maa-amet

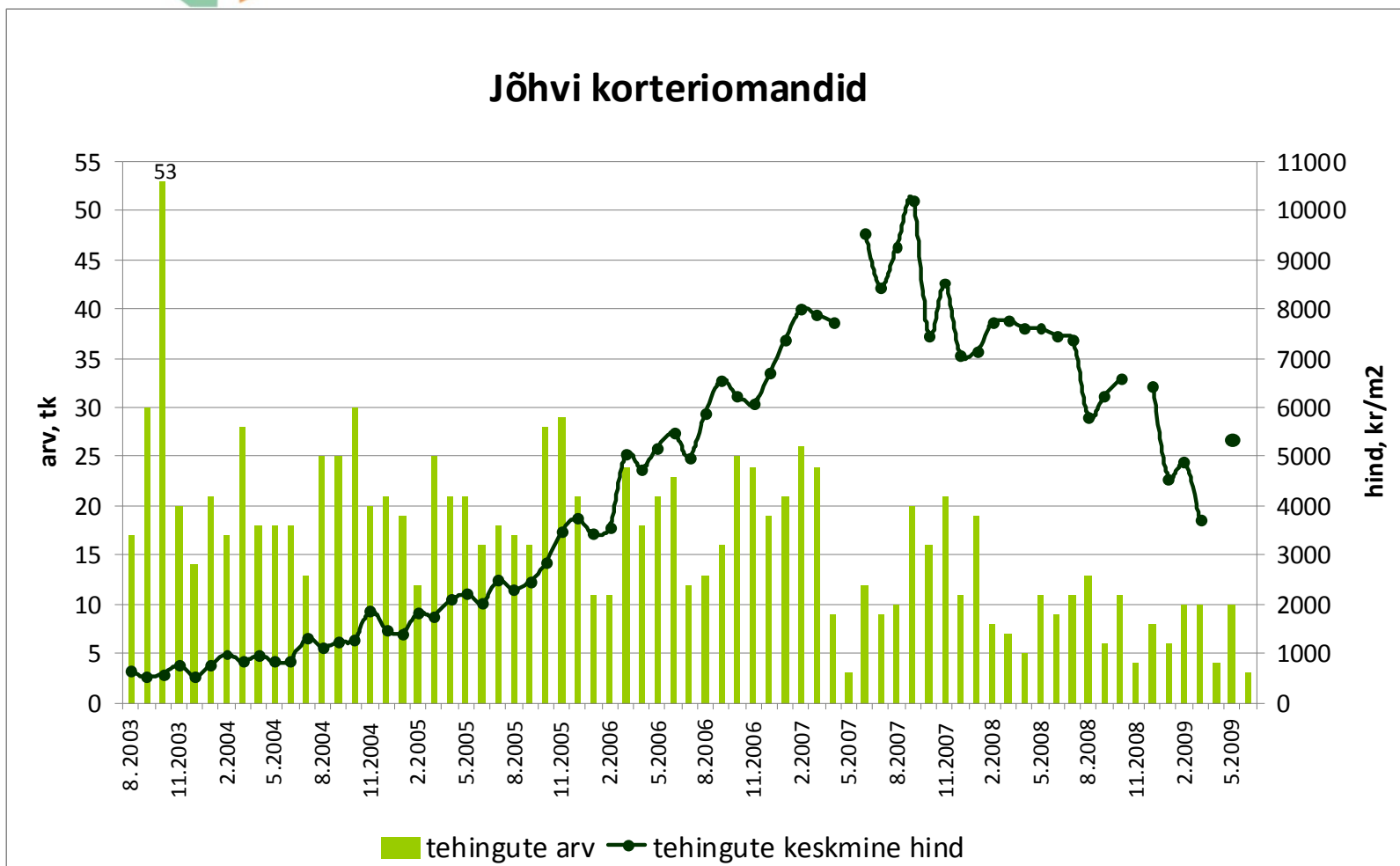


Tehingute arv on langenud 52%,  
tehinguhind 64 %



Allikas: Maa-amet

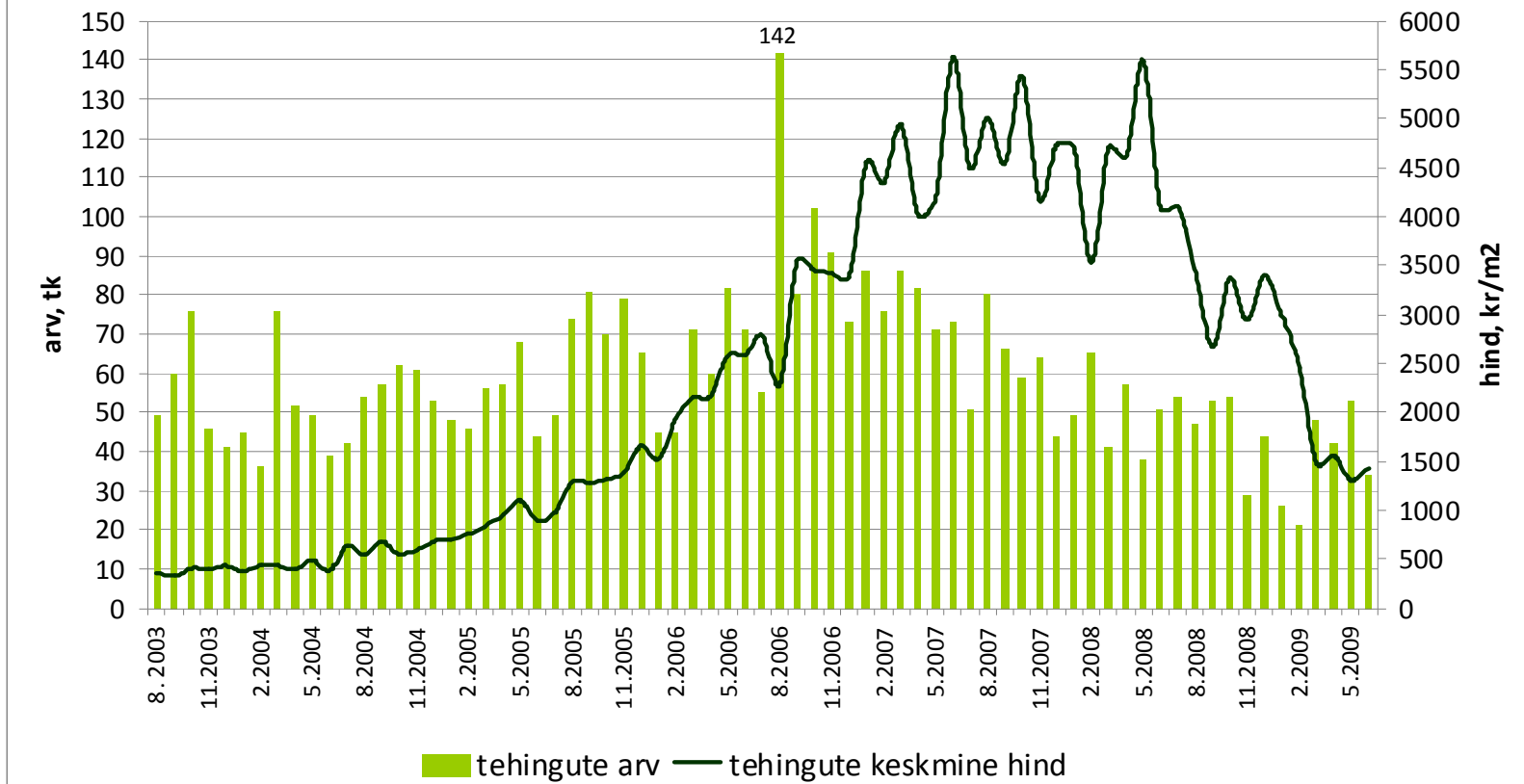
Tehingute arv on langenud 94%,  
tehinguhind 48%



Allikas: Maa-amet

Tehingute arv on langenud 76%,  
tehinguhind 75%

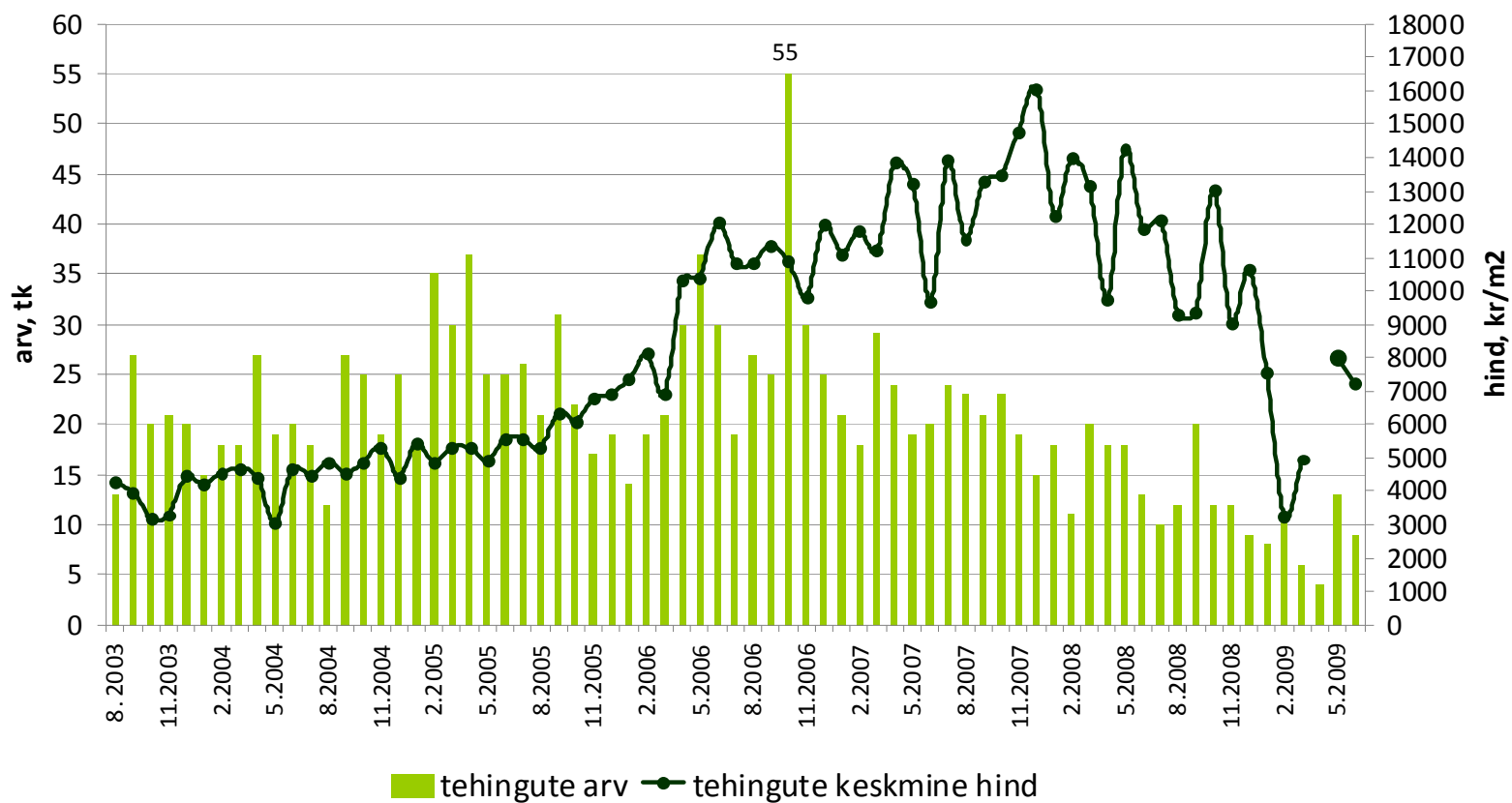
### Kohtla-Järve korteriomandid



Allikas: Maa-amet

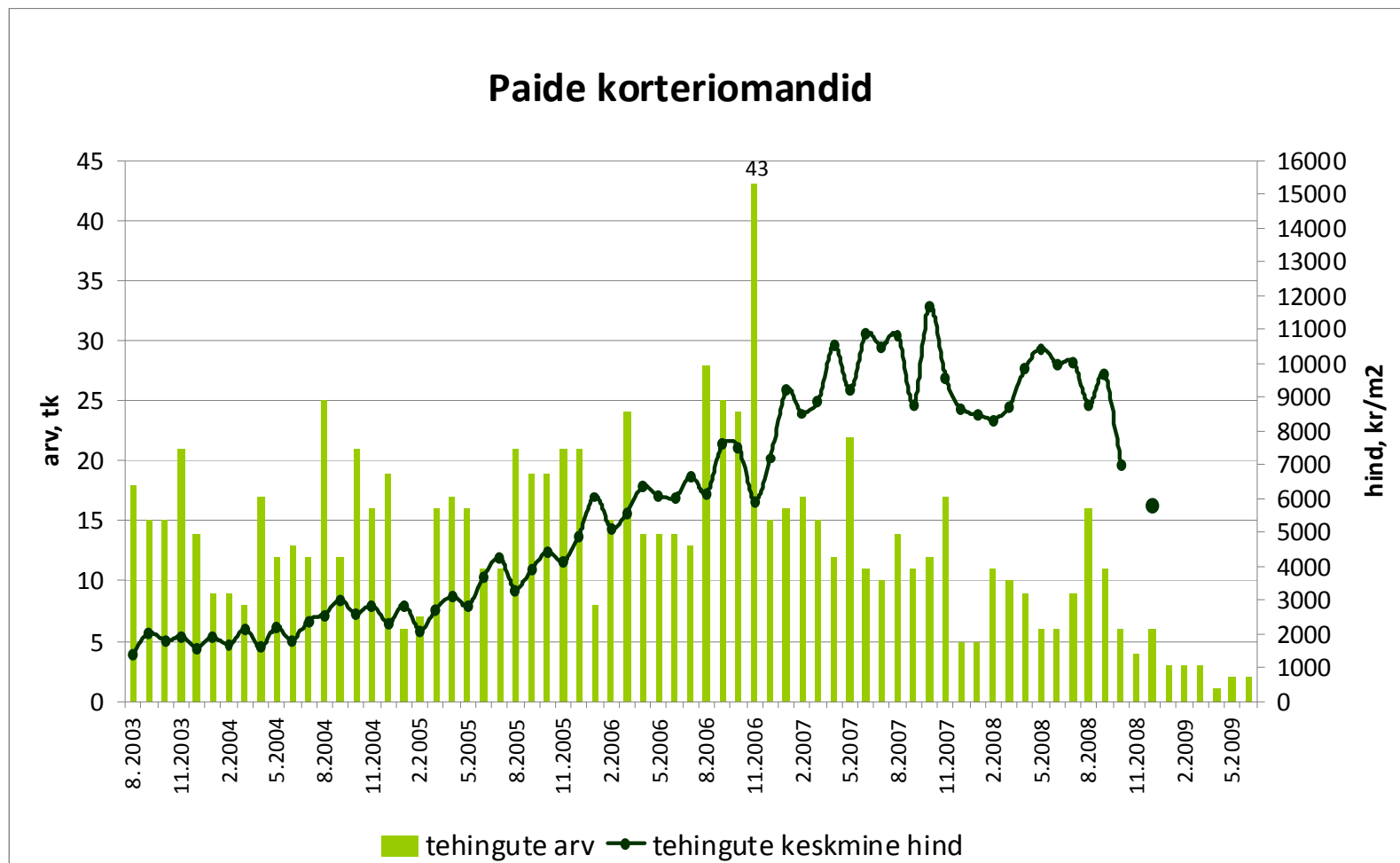
Tehingute arv on langenud 84%,  
tehinguhind 55%

### Rakvere korteriomandid



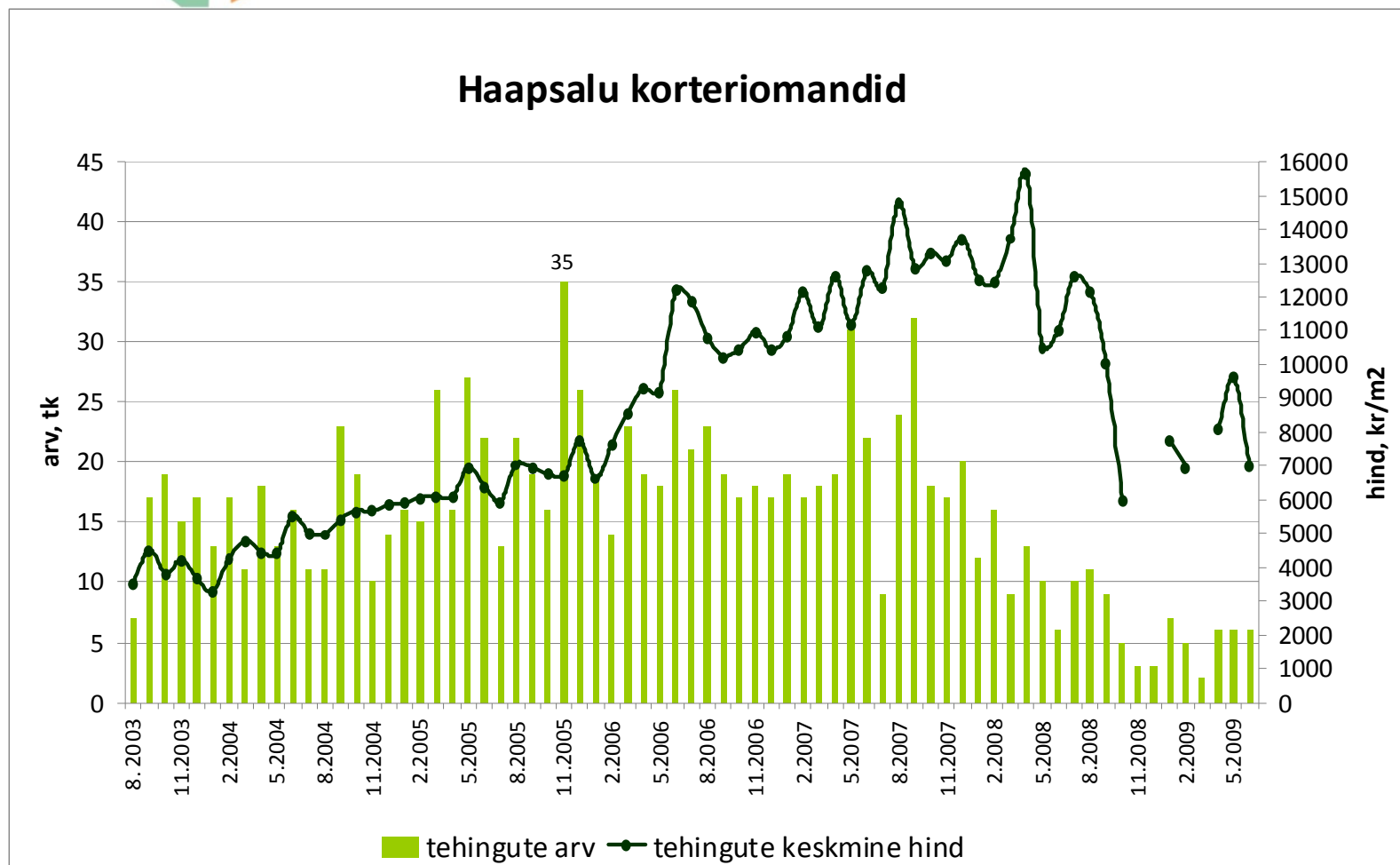
Allikas: Maa-amet

Tehingute arv on langenud 95%,  
tehinguhind ca 50%



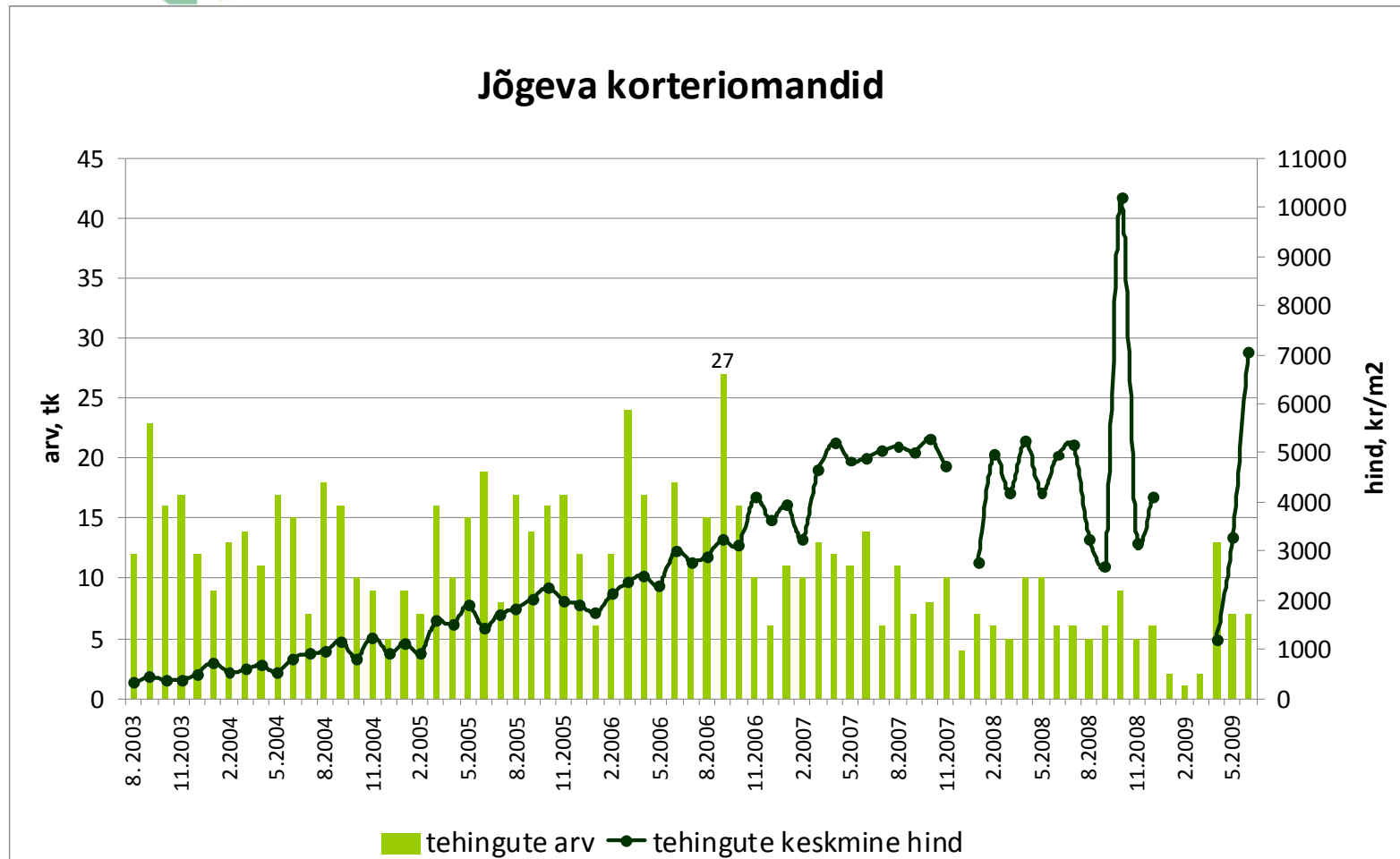
Allikas: Maa-amet

Tehingute arv on langenud 83%,  
tehinguhind ca 55%



Allikas: Maa-amet

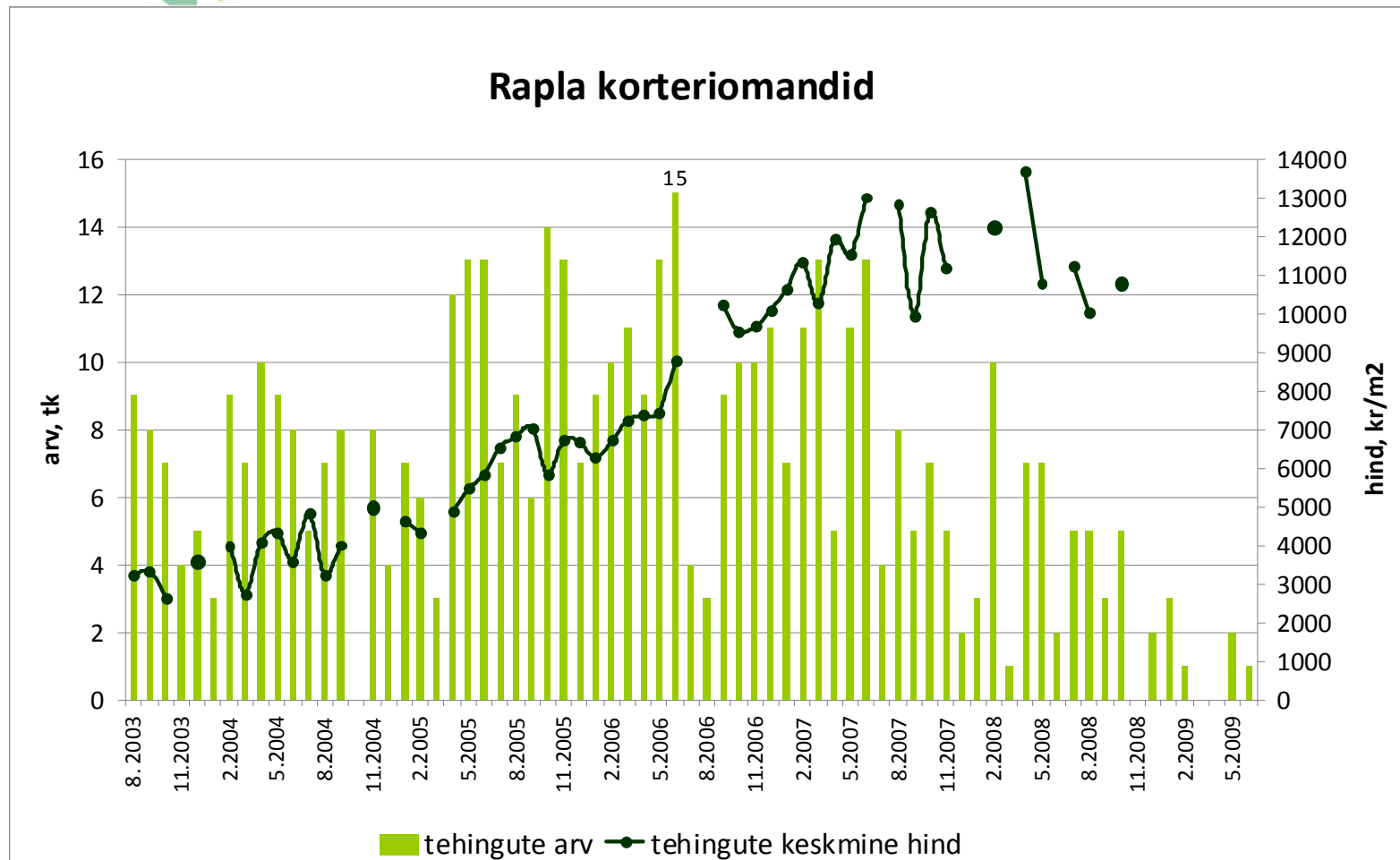
Tehingute arv on langenud 74%,  
tehinguhind ca 31%\*



Allikas: Maa-amet

\* 2008-2009 järsud hinnatõusud on tingitud vabaturuvälistest tehingutest

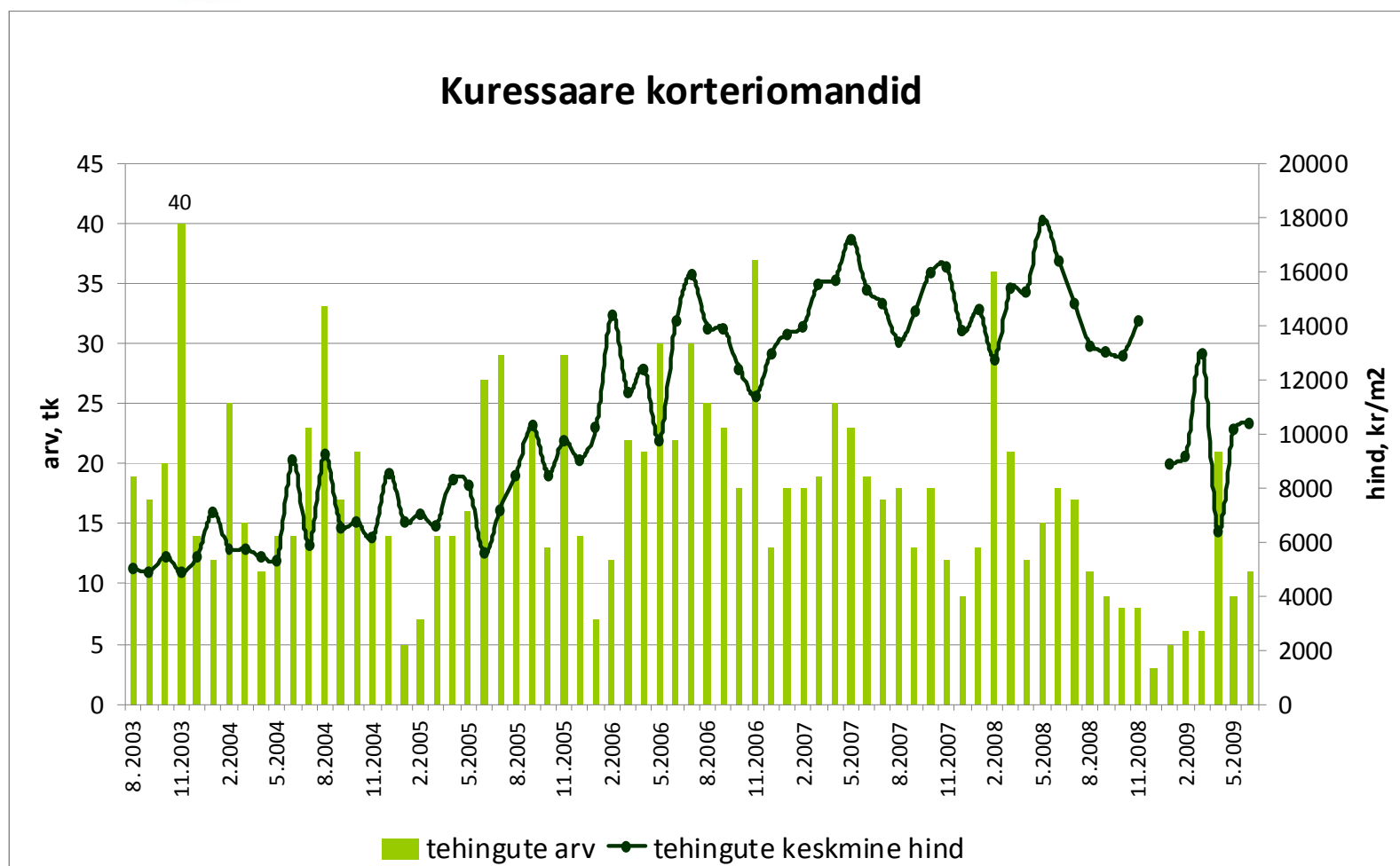
Tehingute arv on langenud 93%,  
tehinguhind ca 21%



Allikas: Maa-amet

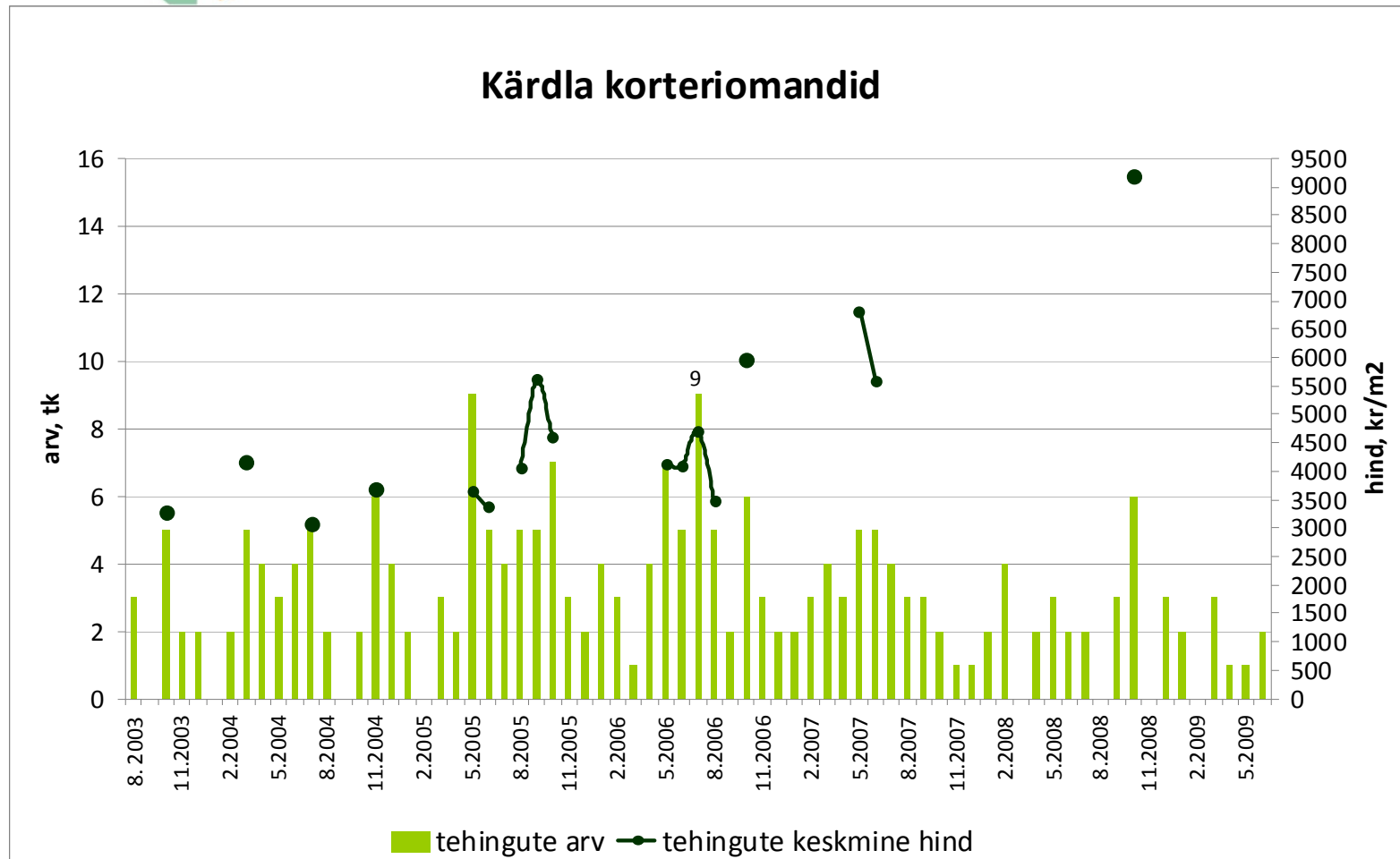


Tehingute arv on langenud 70%,  
tehinguhind 42%



Allikas: Maa-amet

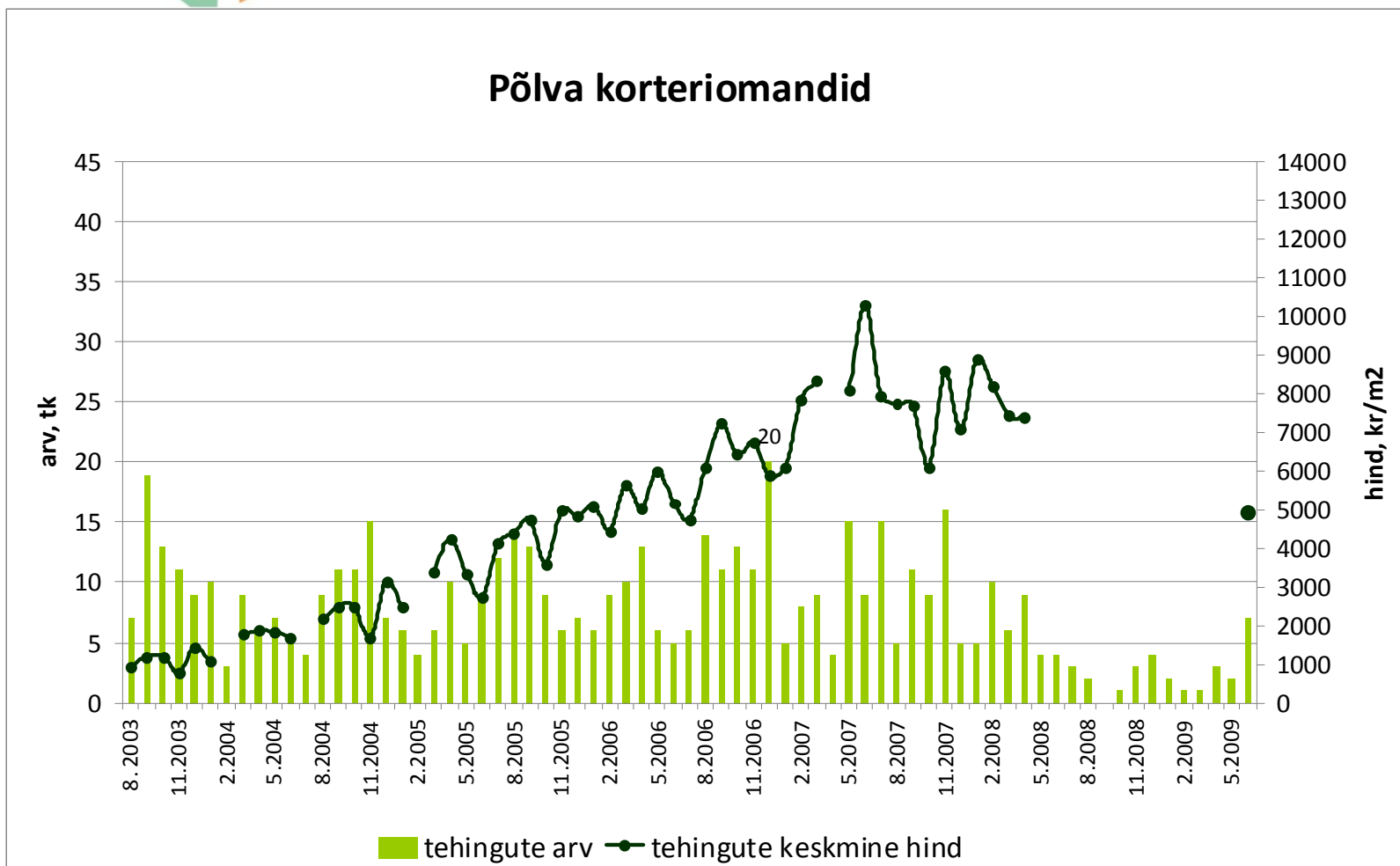
Tehingute arv on langenud 78%



Allikas: Maa-amet

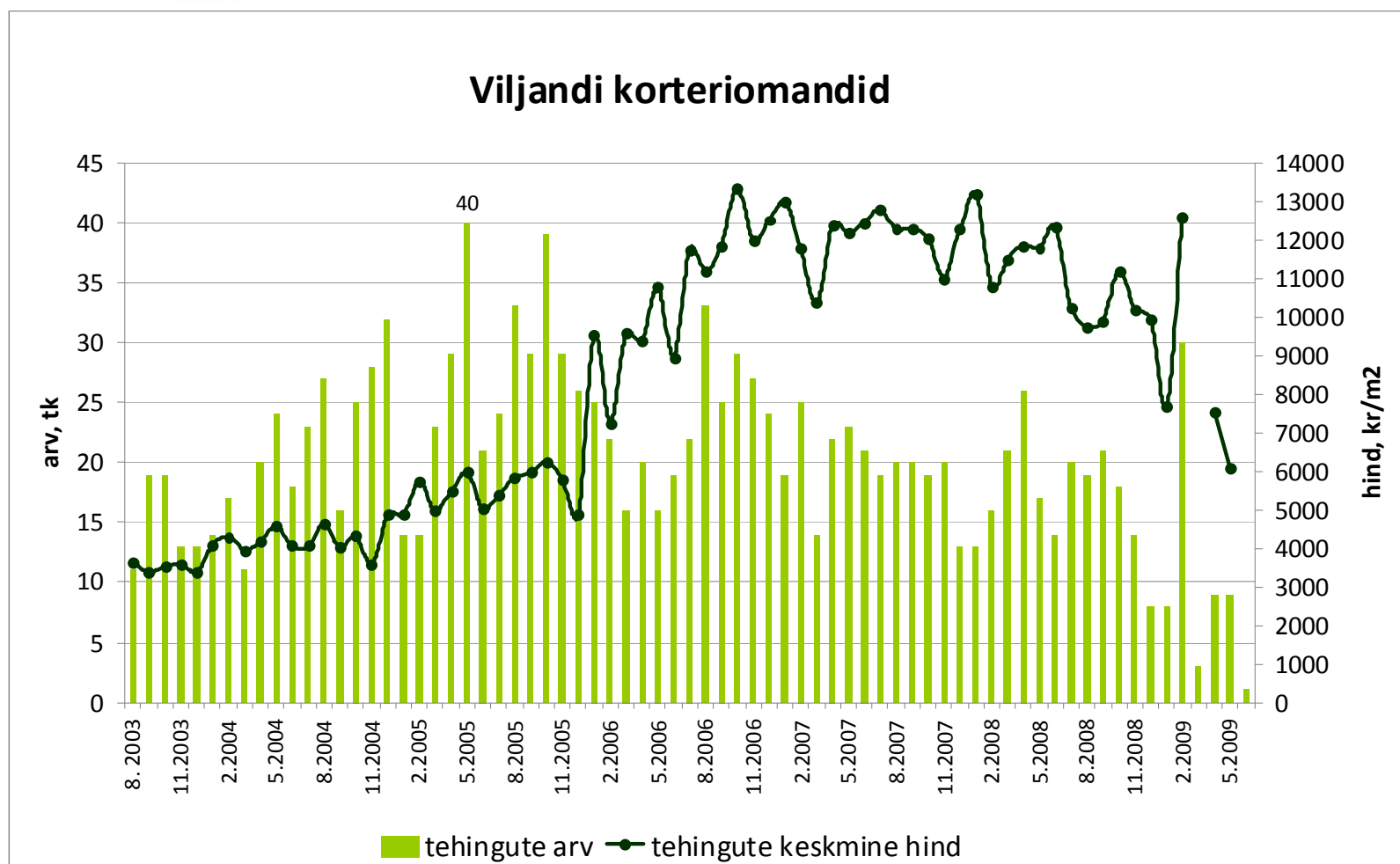
Tehingute arv on langenud 65%,  
tehinguhind ca 52%

### Põlva korteriomandid



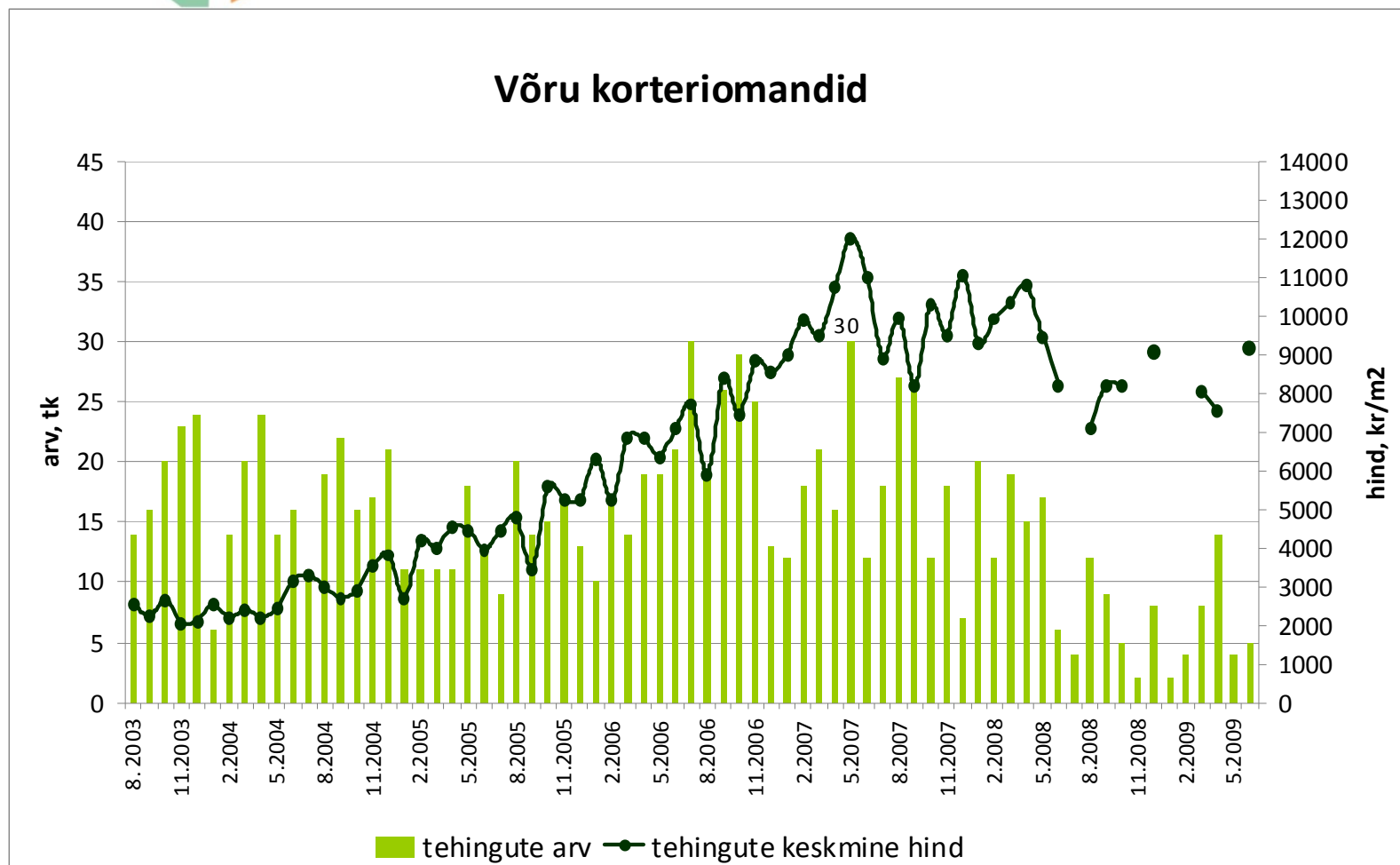
Allikas: Maa-amet

Tehingute arv on langenud 98%,  
tehinguhind 54%



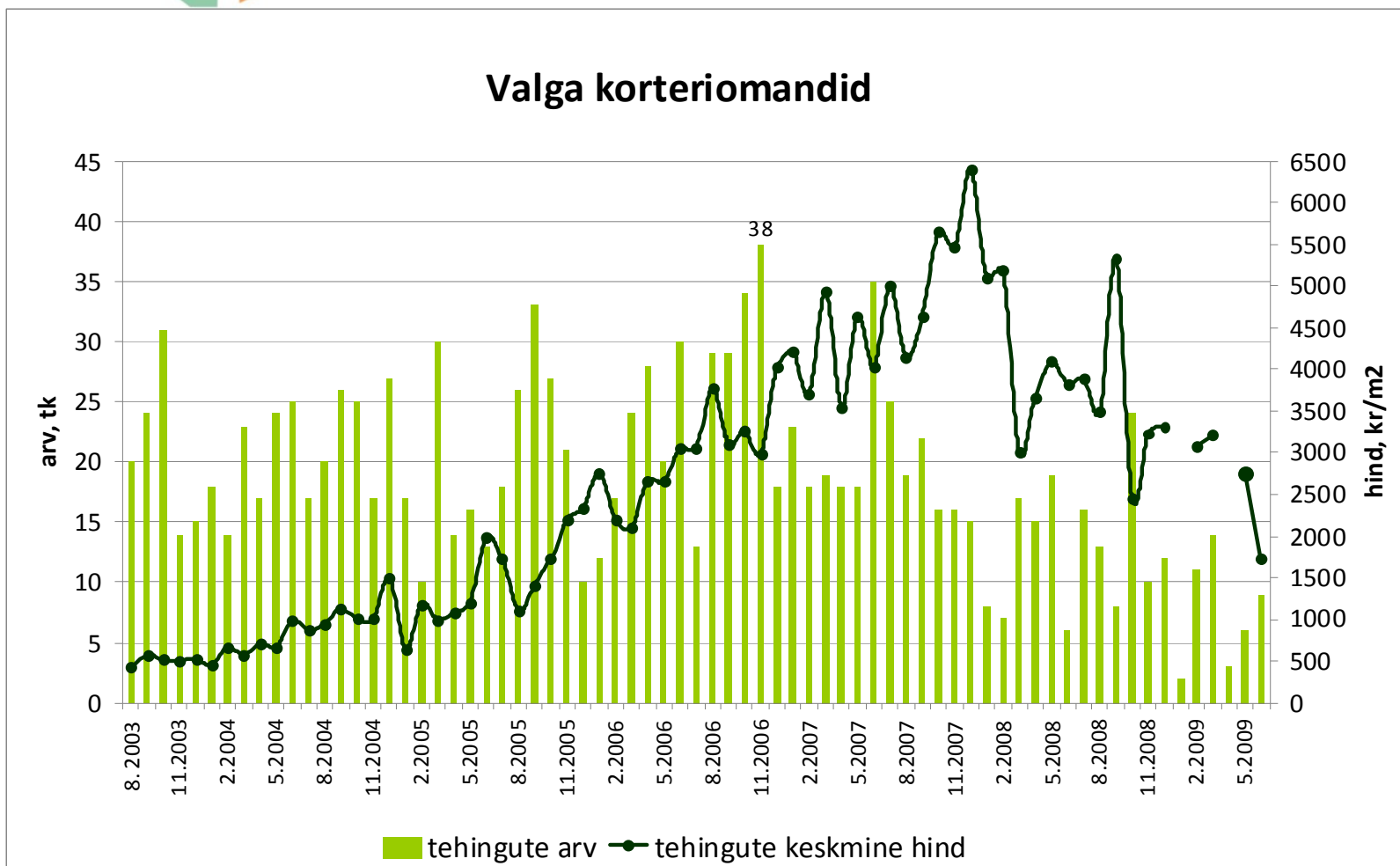
Allikas: Maa-amet

Tehingute arv on langenud 83%,  
tehinguhind 24%



Allikas: Maa-amet

Tehingute arv on langenud 76%,  
tehinguhind 73%



Allikas: Maa-amet