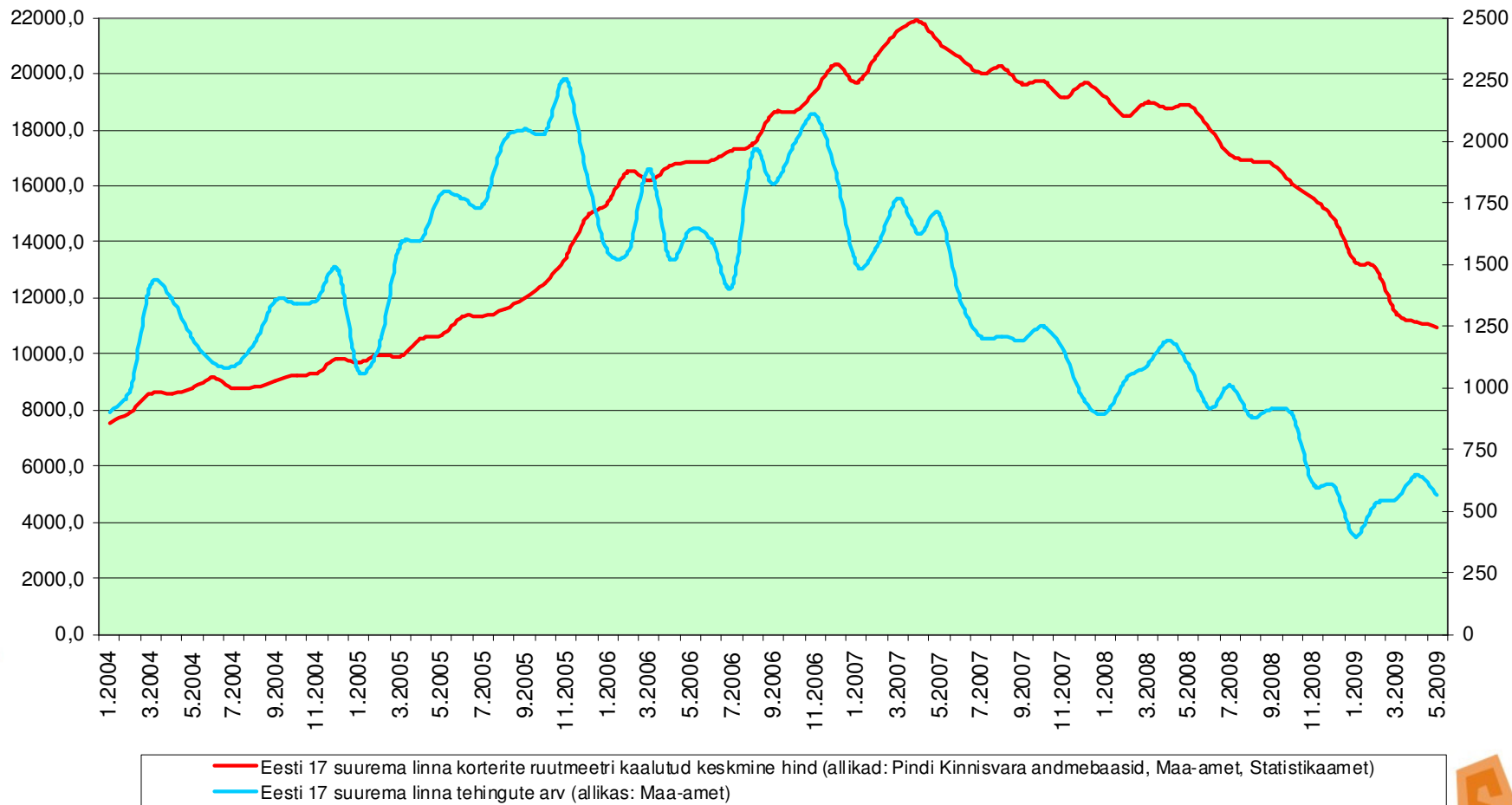


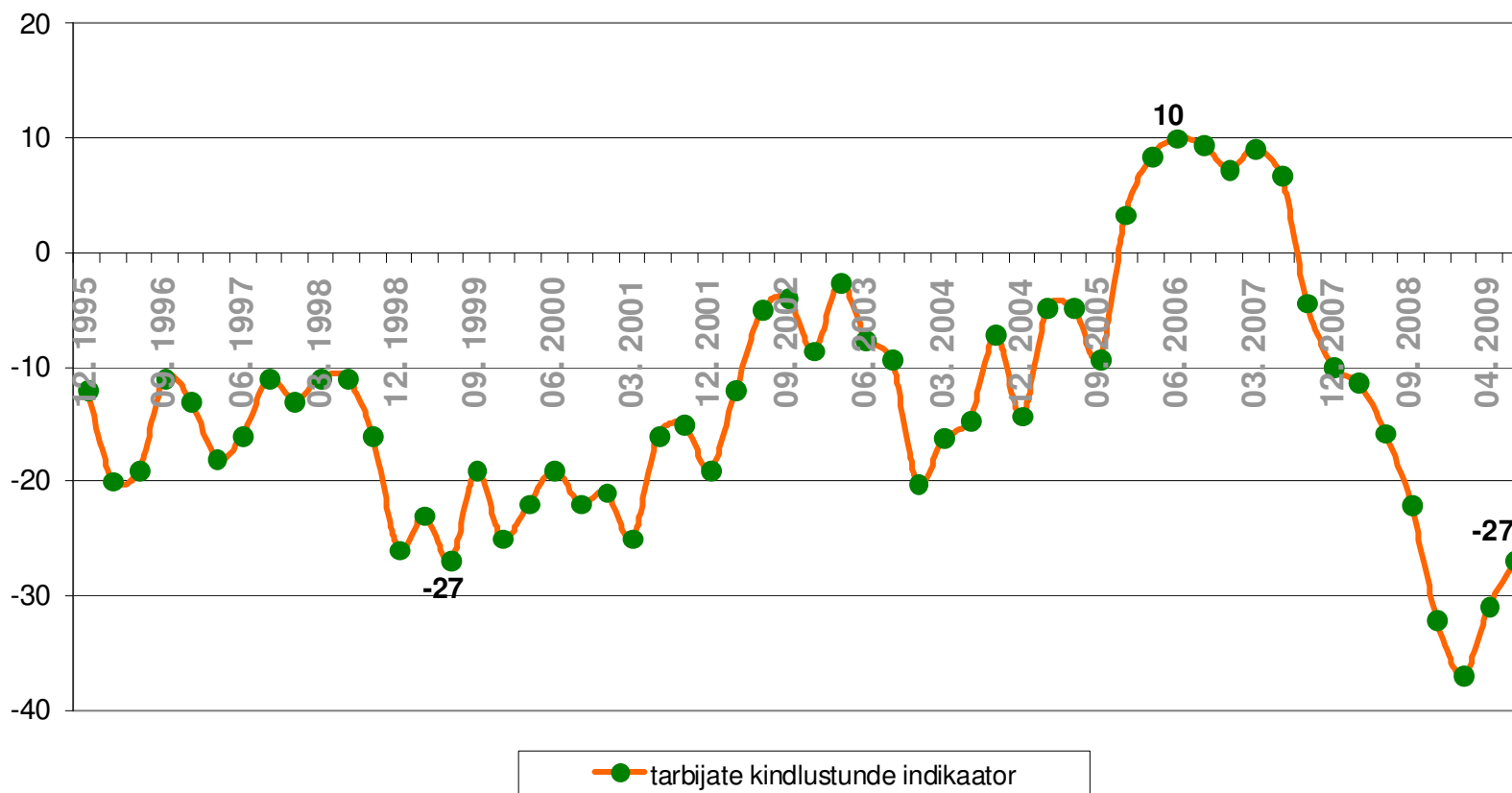


# **KINNISVARATURU AKTIIVSUS JA REGIONAALSED ERIPÄRAD**

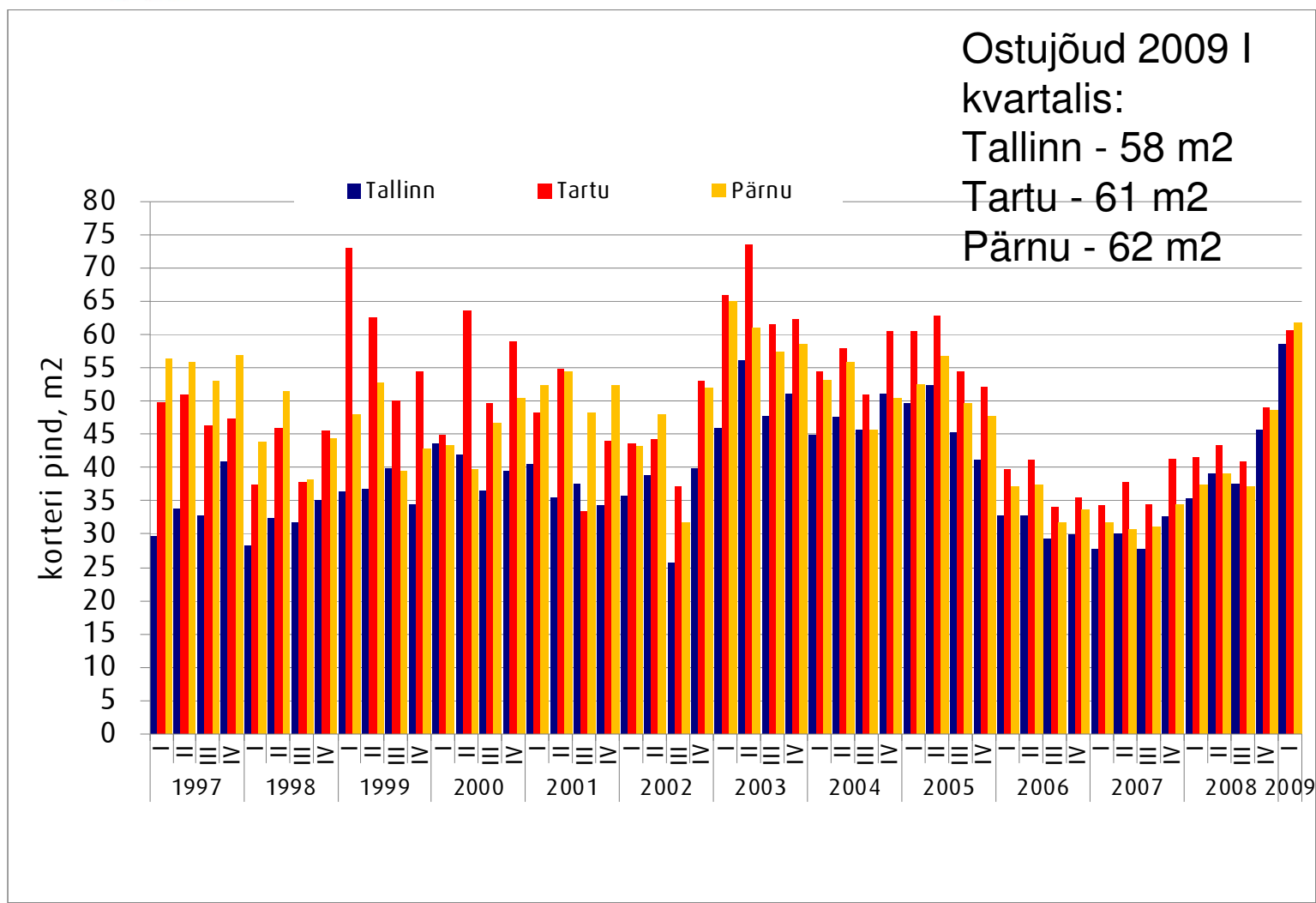
## PINDI HINNAINDEKS



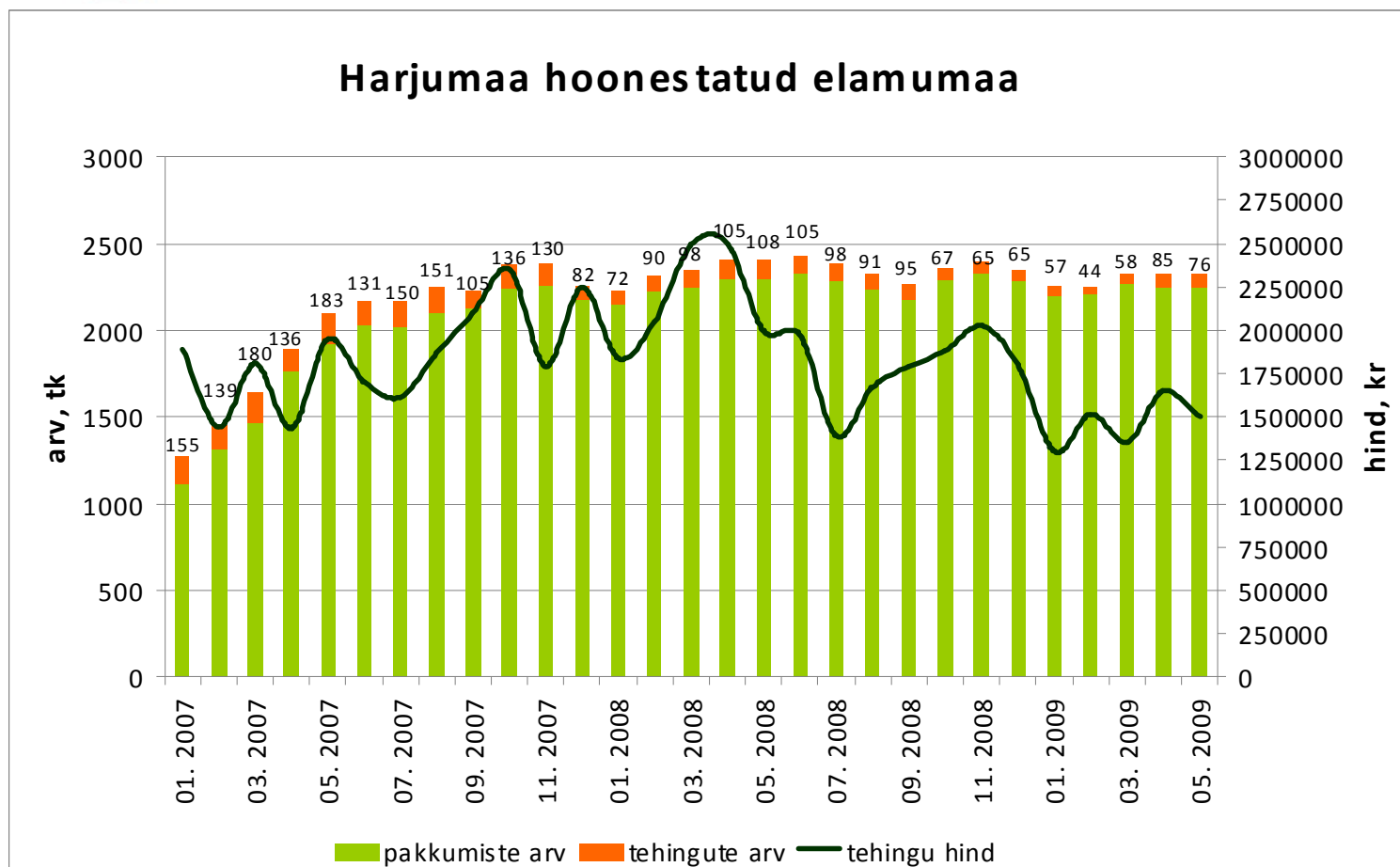
## Tarbijate kindlustunde indikaator



## Kinnisvara ostujõud keskmise palga baasil arvatatud laenuvõime järgi:

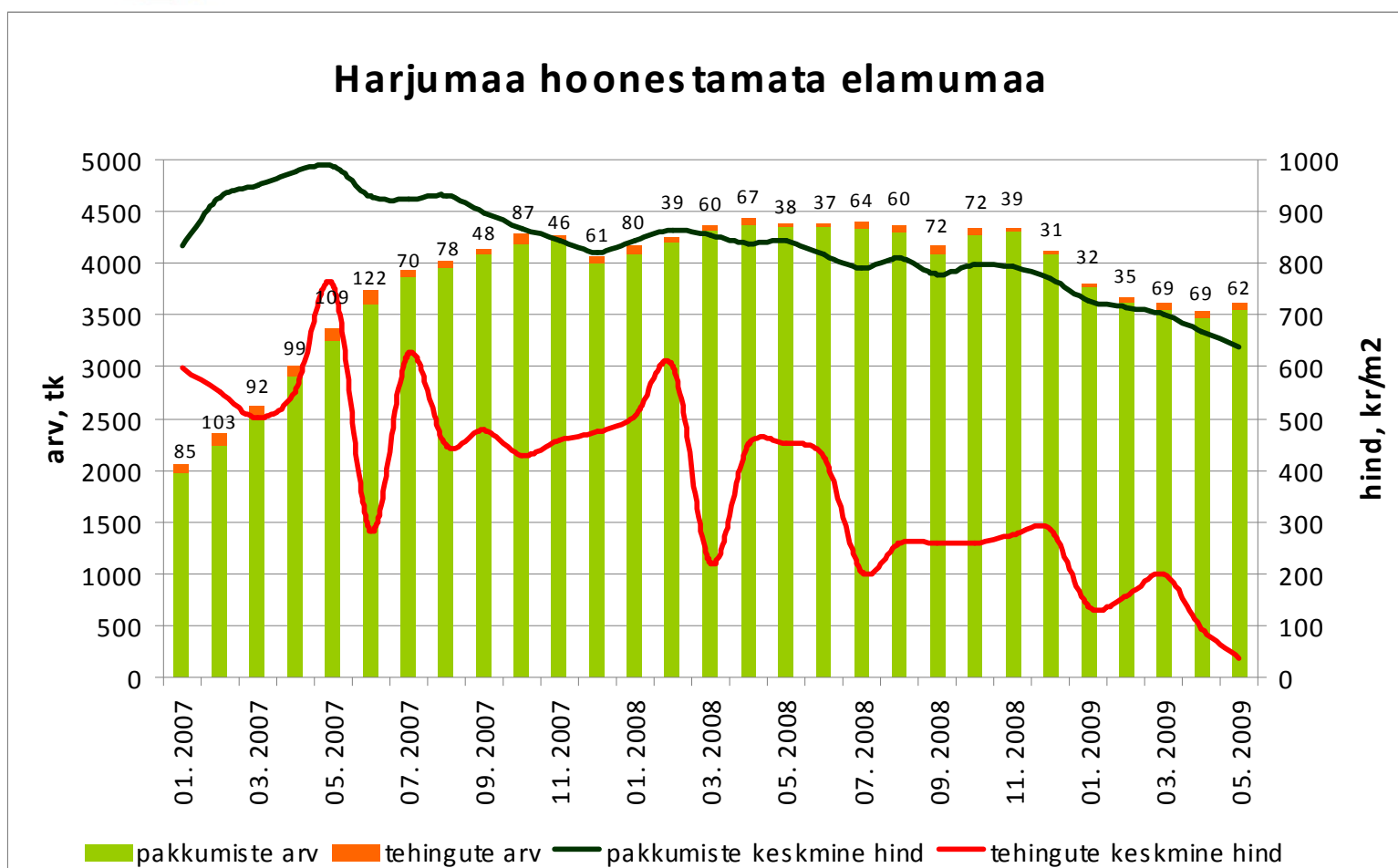


Tehingute arv on langenud 58%,  
tehinguhind 40%



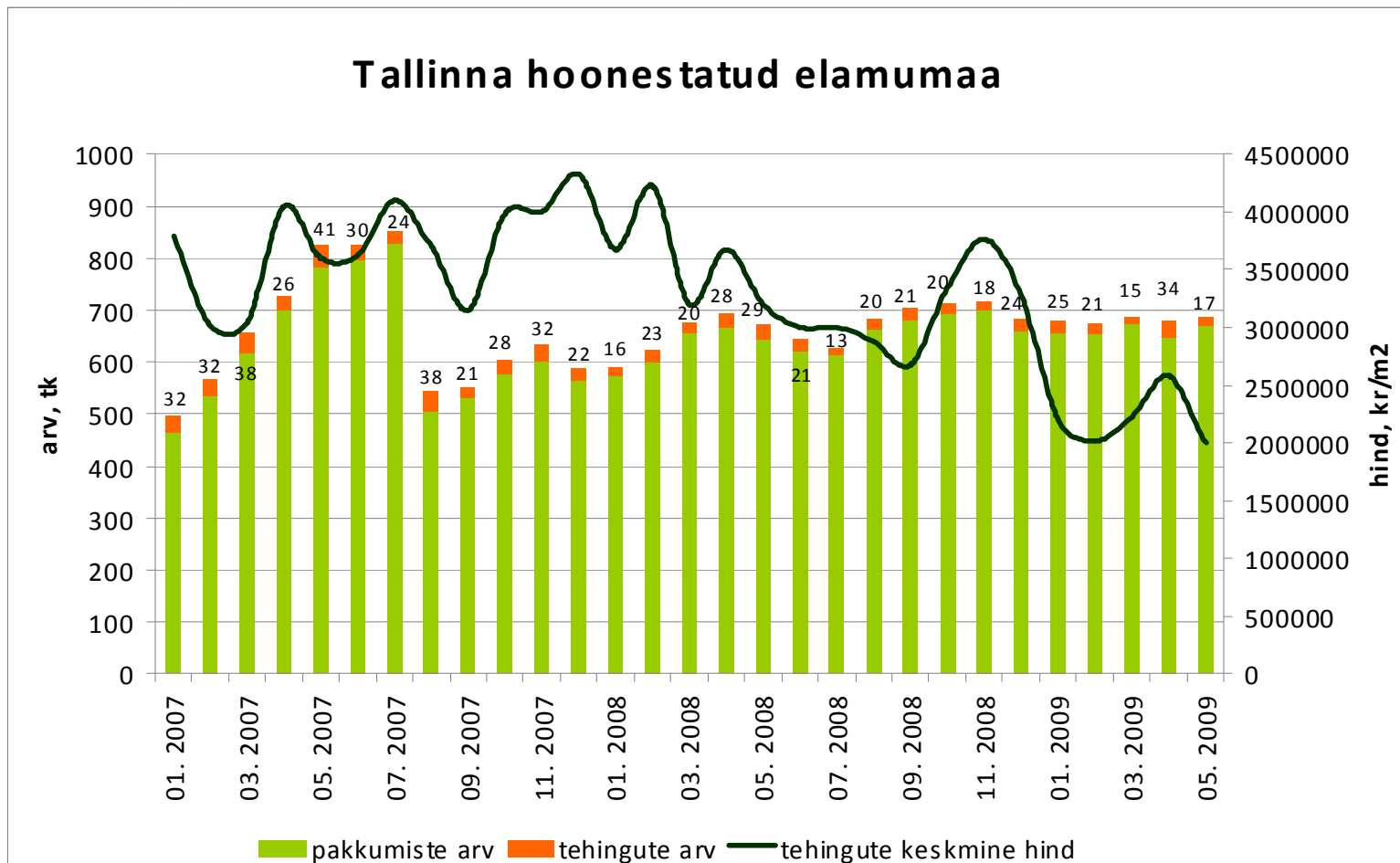
Allikad: Maa-amet, City24

Tehingute arv on langenud 49%,  
tehinguhind 95%



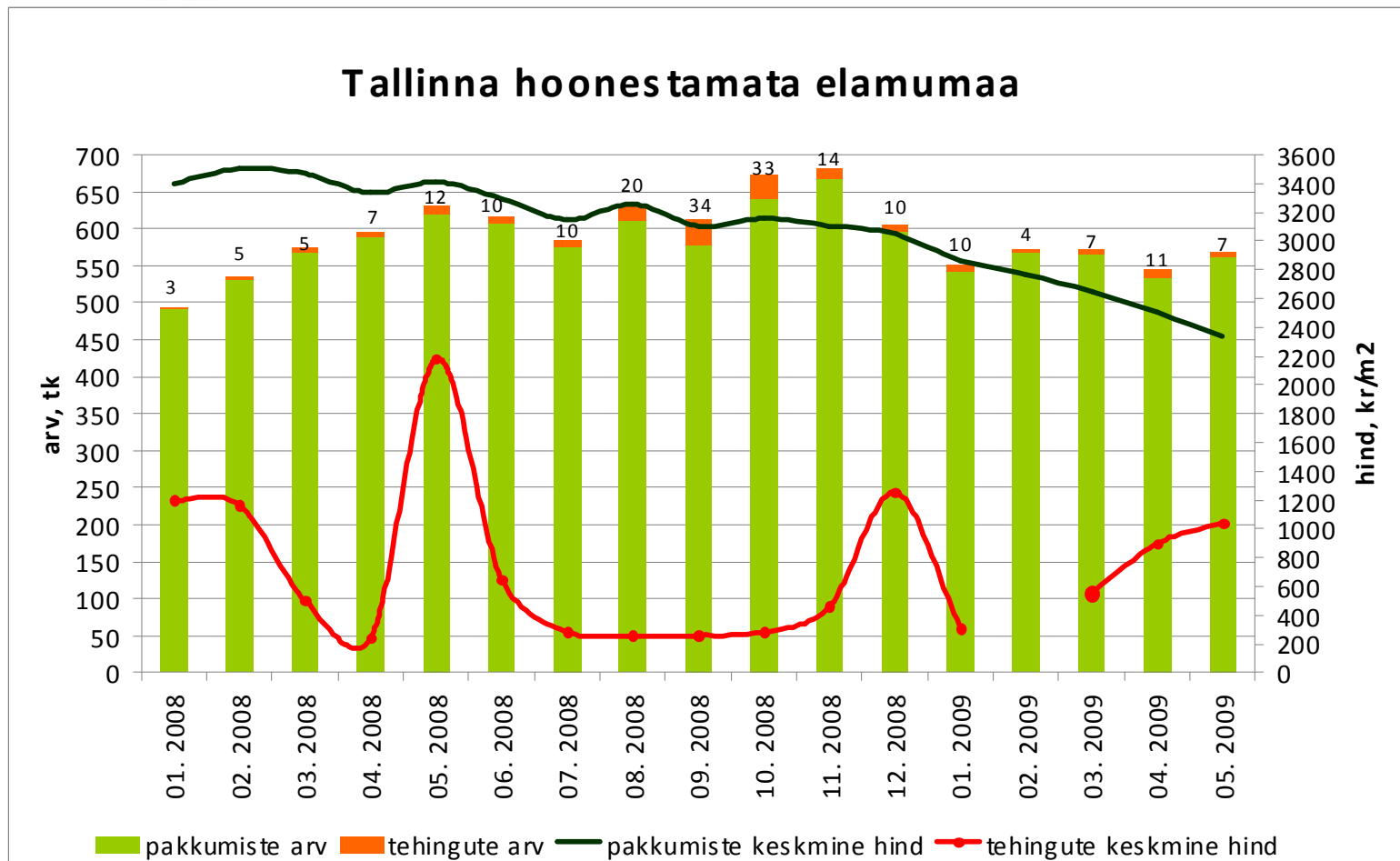
Allikas: Maa-amet

Tehingute arv on 2006.a. märtsist  
langenud 77%, tehinguhind  
2007.a. dets-st 54%



Allikad: Maa-amet, City24

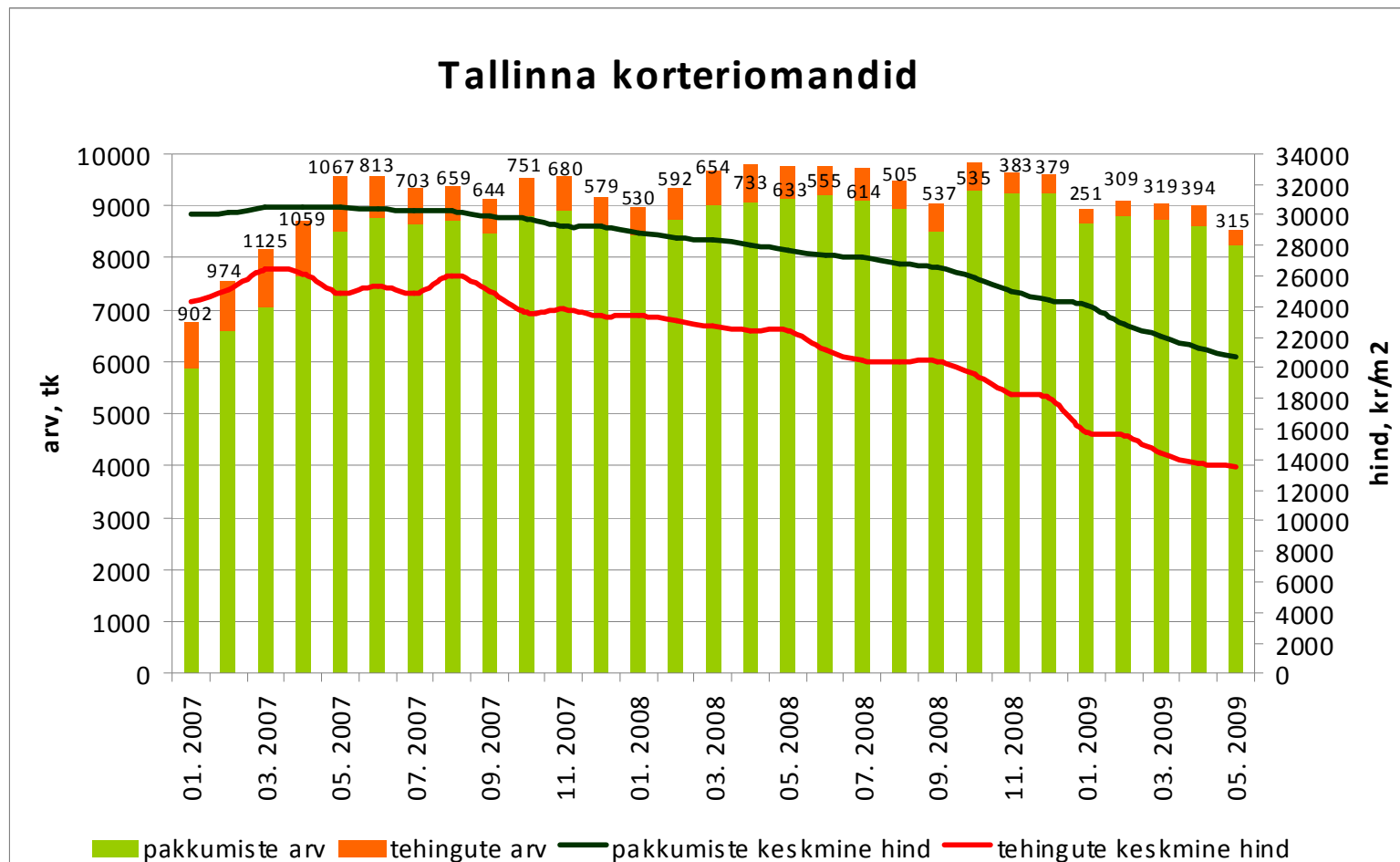
Tehingute arv on 2006.a. maist langenud 74%, tehinguhind 2007.a. juunist 62%



Allikad: Maa-amet, City24



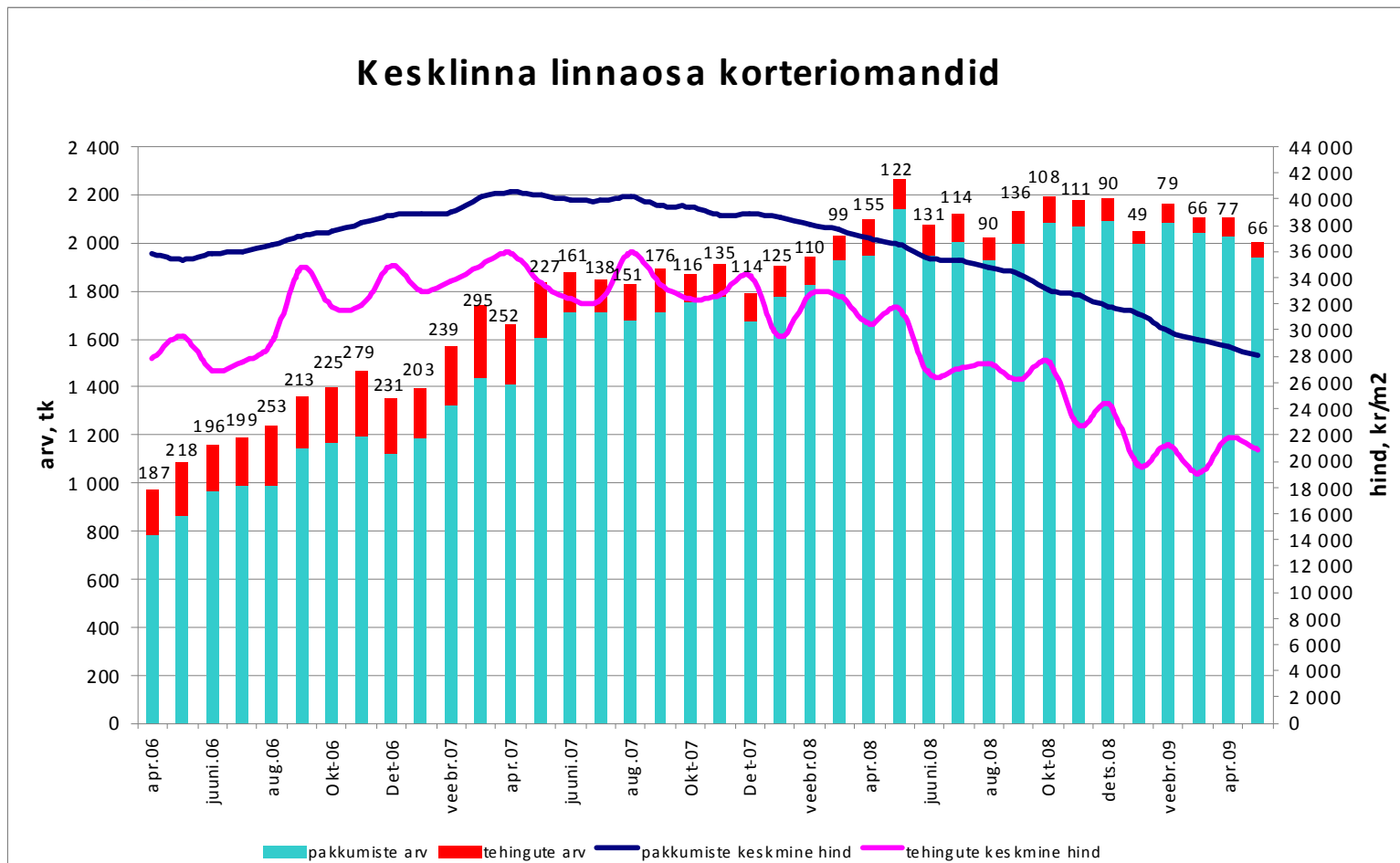
Tehingute arv on langenud 72%,  
tehinguhind 49%



Allikad: Maa-amet, City24

Tehingute arv on langenud 78%,  
tehinguhind 42%

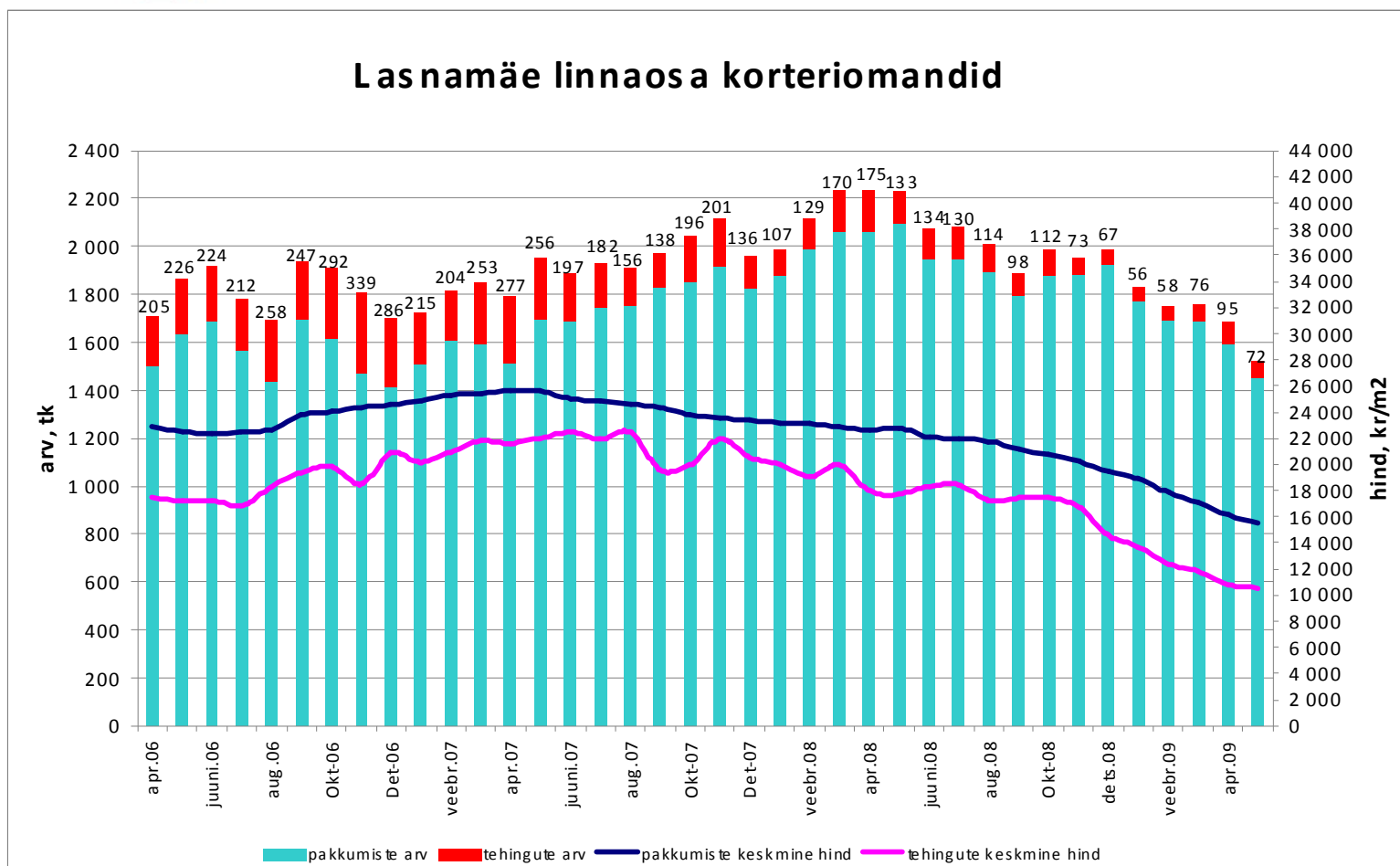
### Kesklinna linnaosa korteriomandid



Allikad: Maa-amet, City24

Tehingute arv on langenud 79%,  
tehinguhind 53%

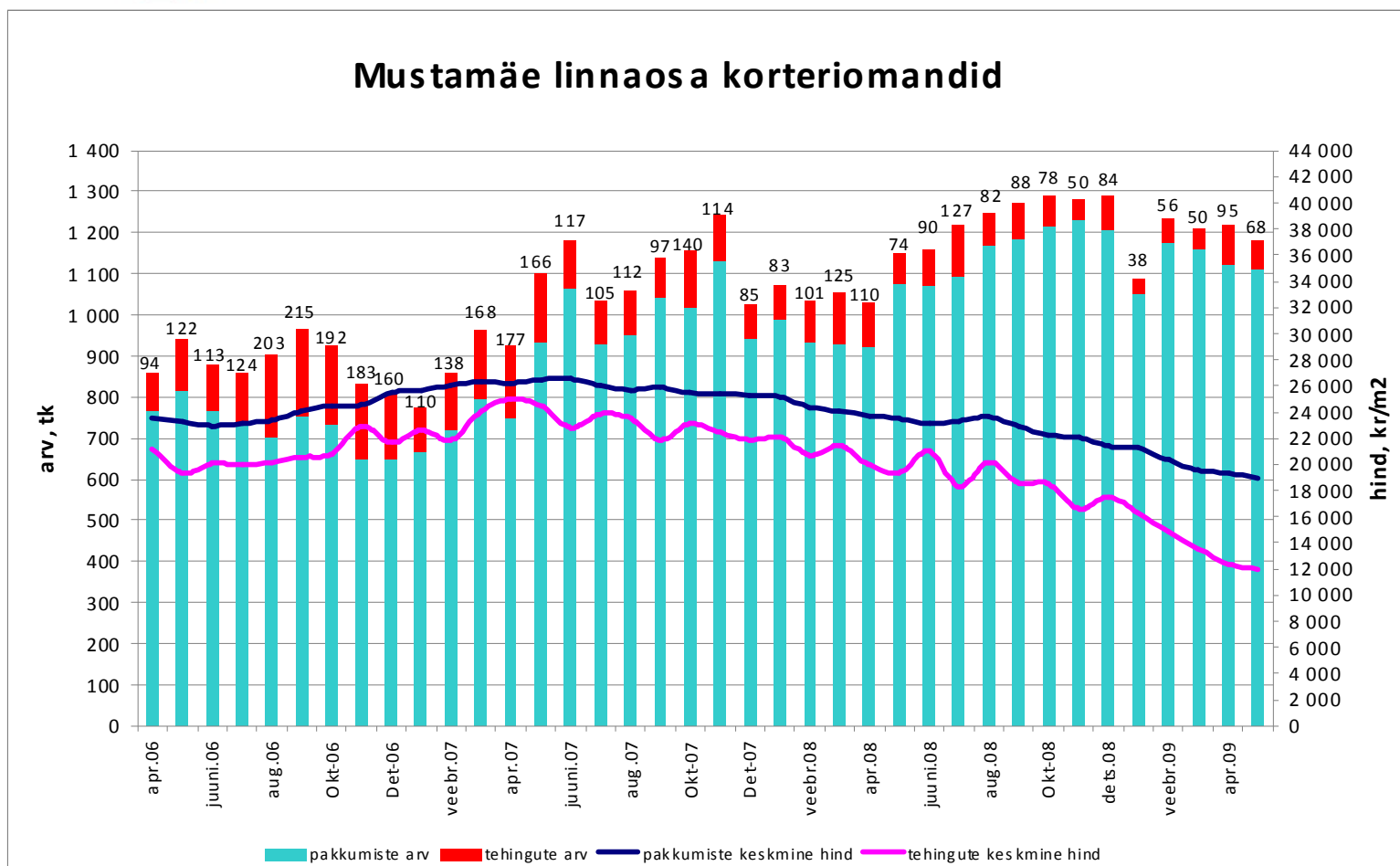
### Lasnamäe linnaosa korteriomandid



Allikad: Maa-amet, City24

Tehingute arv on langenud 68%,  
tehinguhind 52%

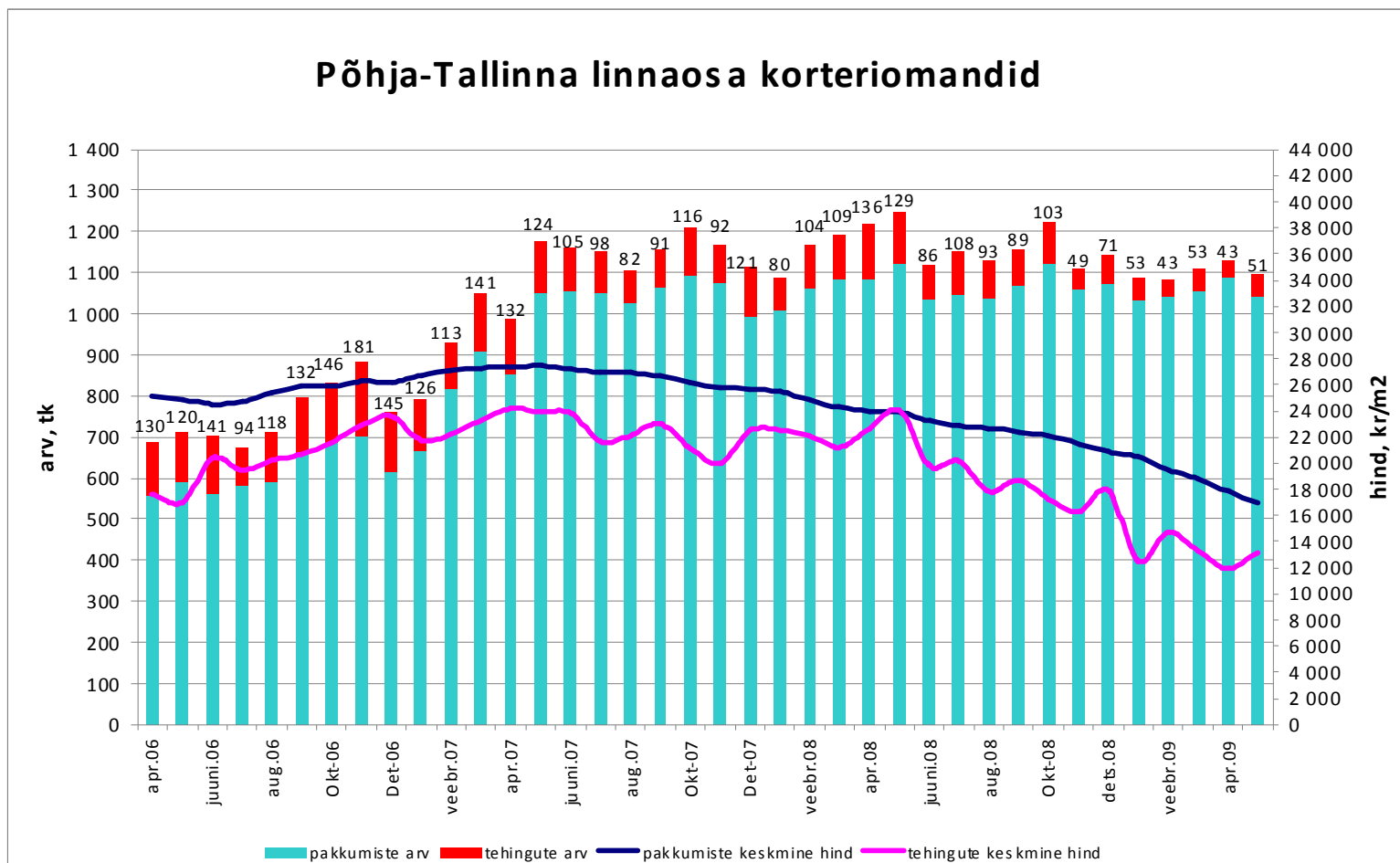
### Mustamäe linnaosa korteriomandid



Allikad: Maa-amet, City24

Tehingute arv on langenud 72%,  
tehinguhind 45%

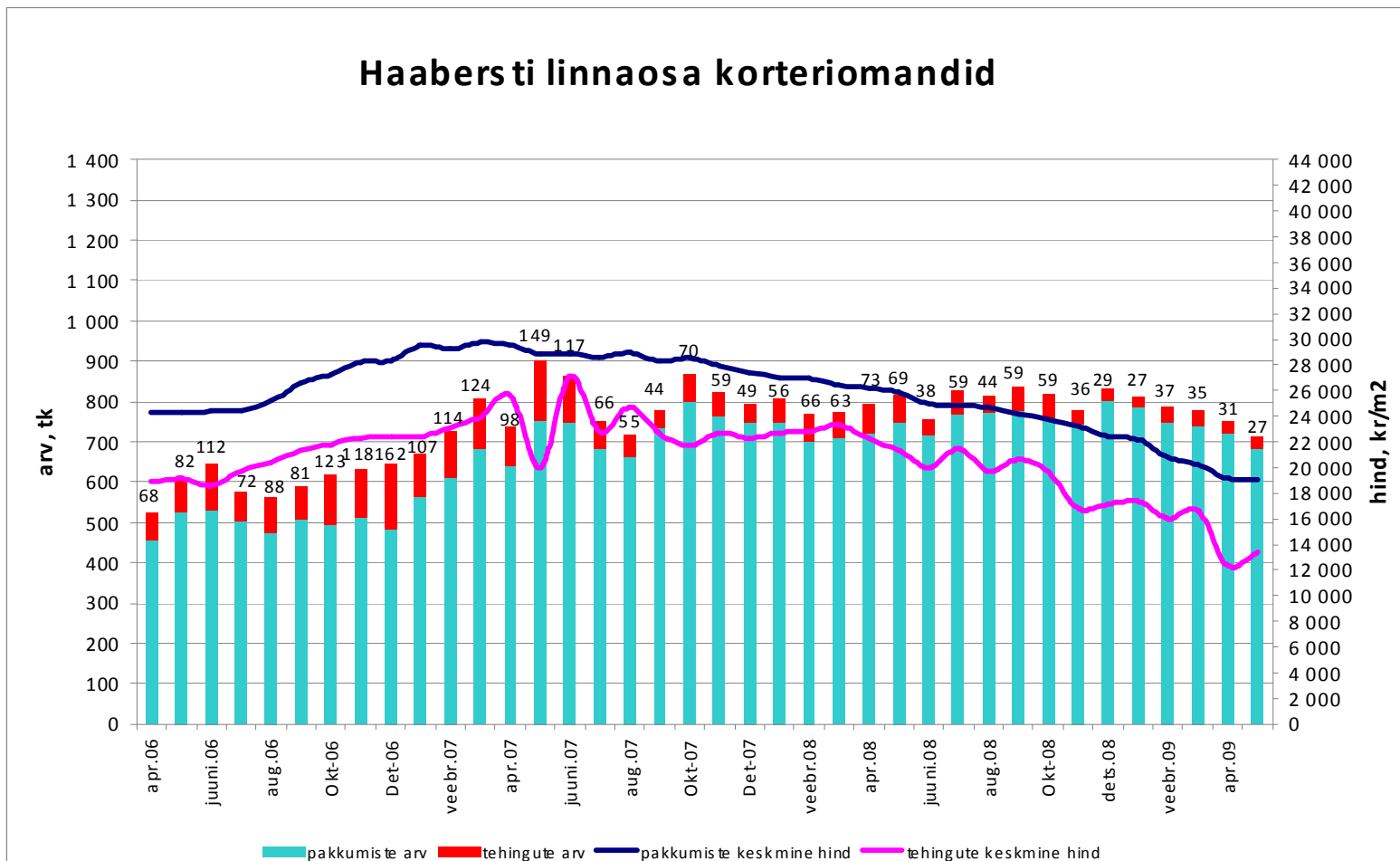
### Põhja-Tallinna linnaosa korteriomandid



Allikad: Maa-amet, City24

Tehingute arv on langenud 83%,  
tehinguhind 51%

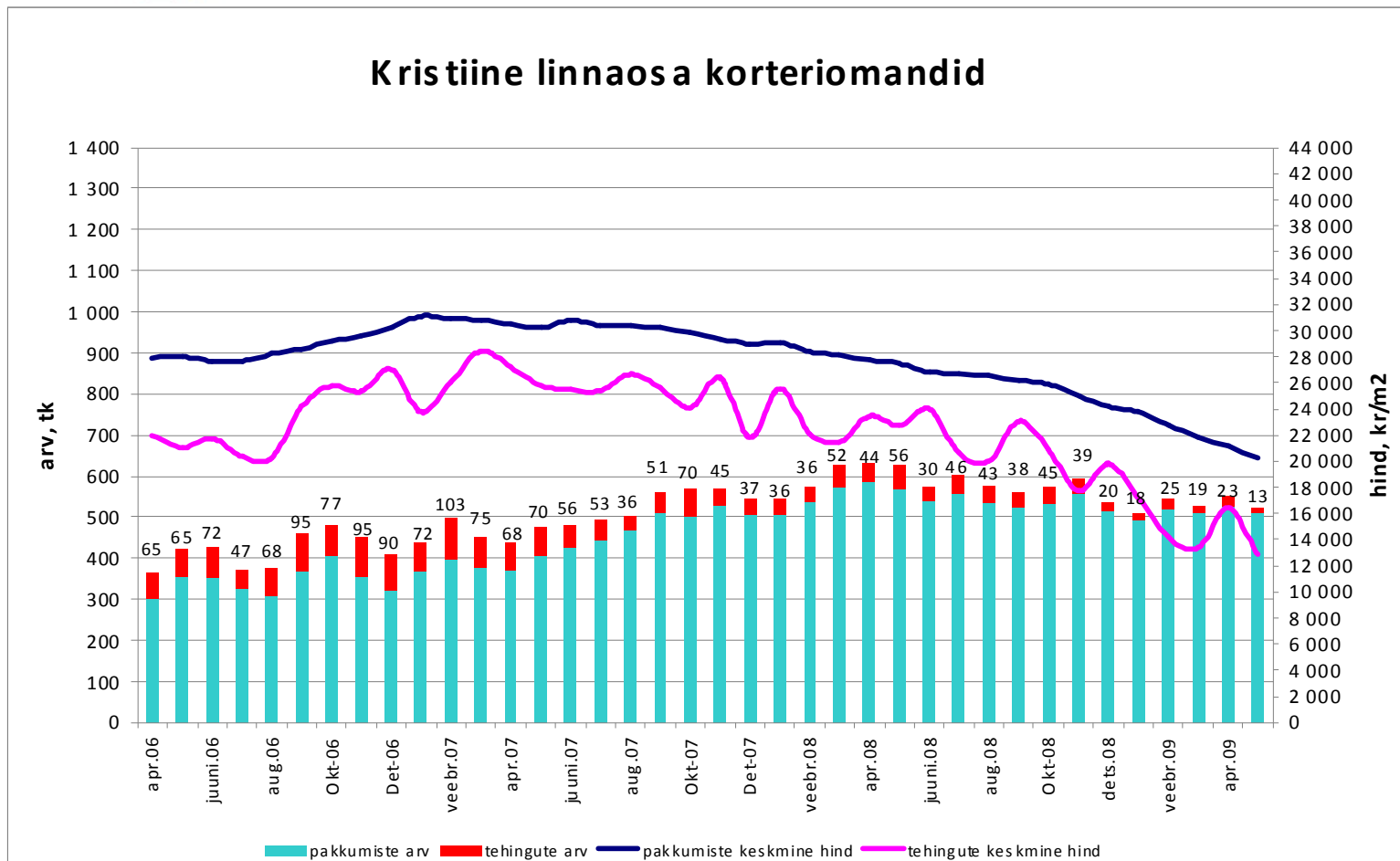
### Haabers ti linnaosa korteriomandid



Allikad: Maa-amet, City24

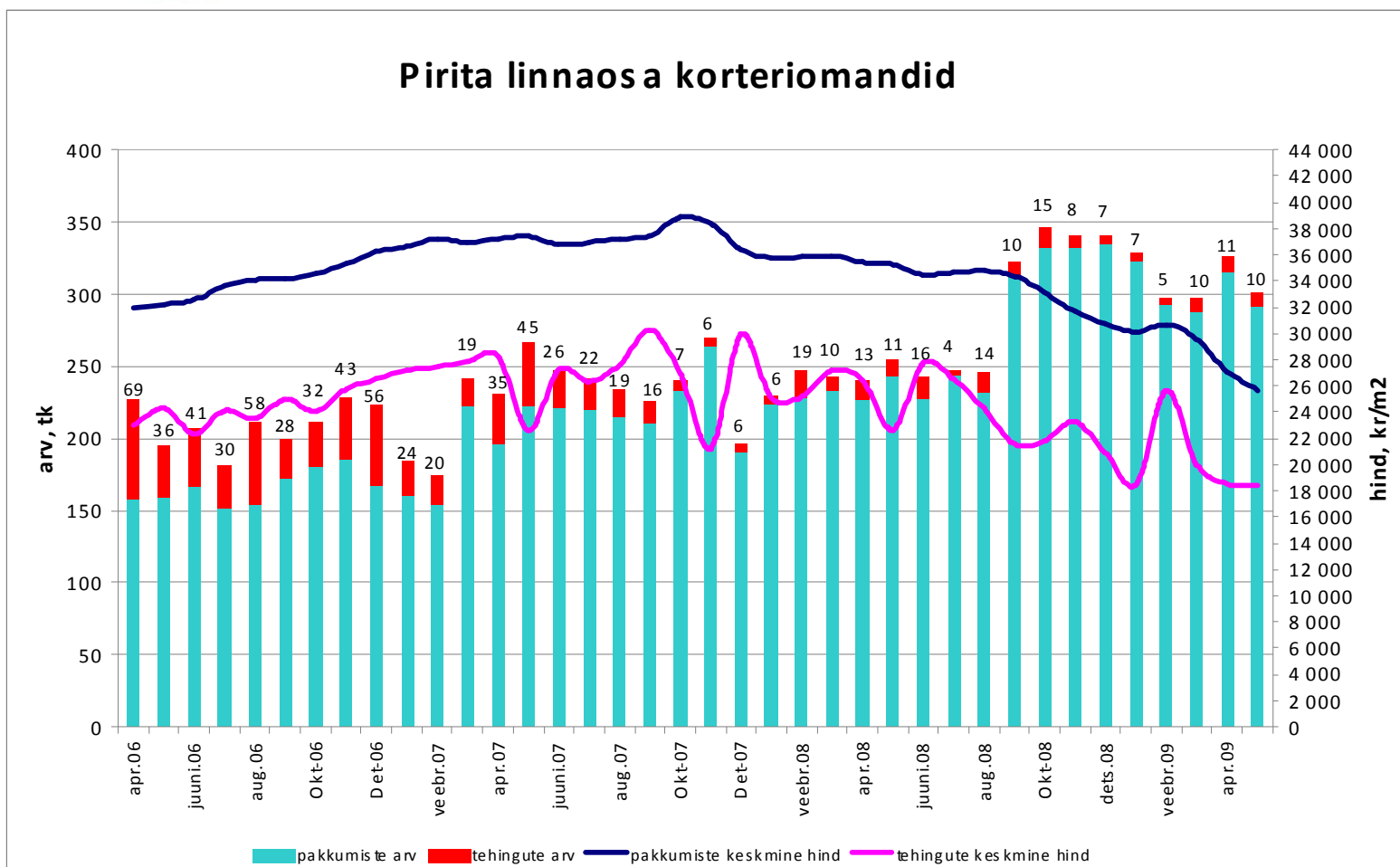
Tehingute arv on langenud 87%,  
tehinguhind 55%

### Kristiine linnaosa korteriomandid



Allikad: Maa-amet, City24

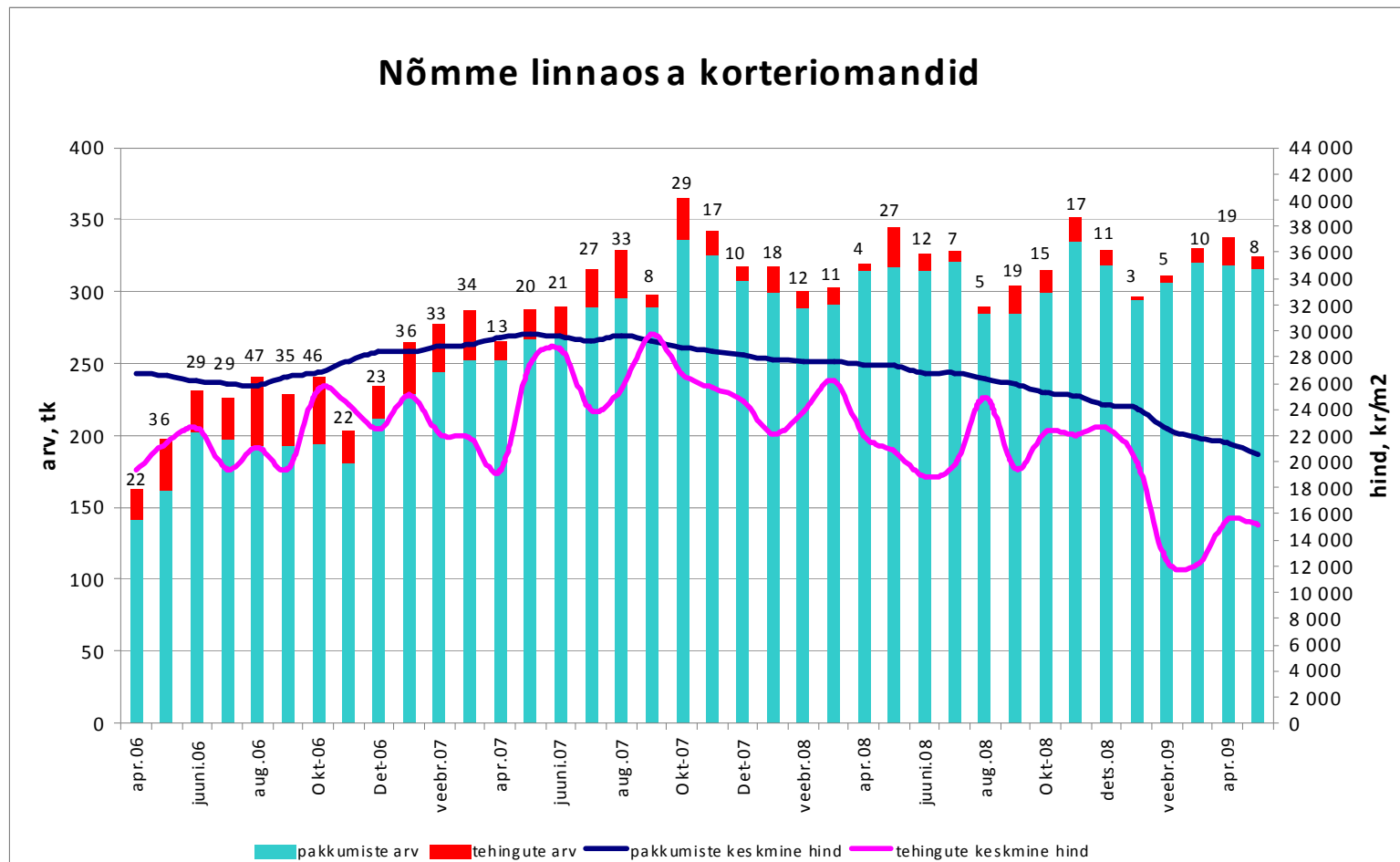
Tehingute arv on langenud 86%,  
tehinguhind 39%



Allikad: Maa-amet, City24

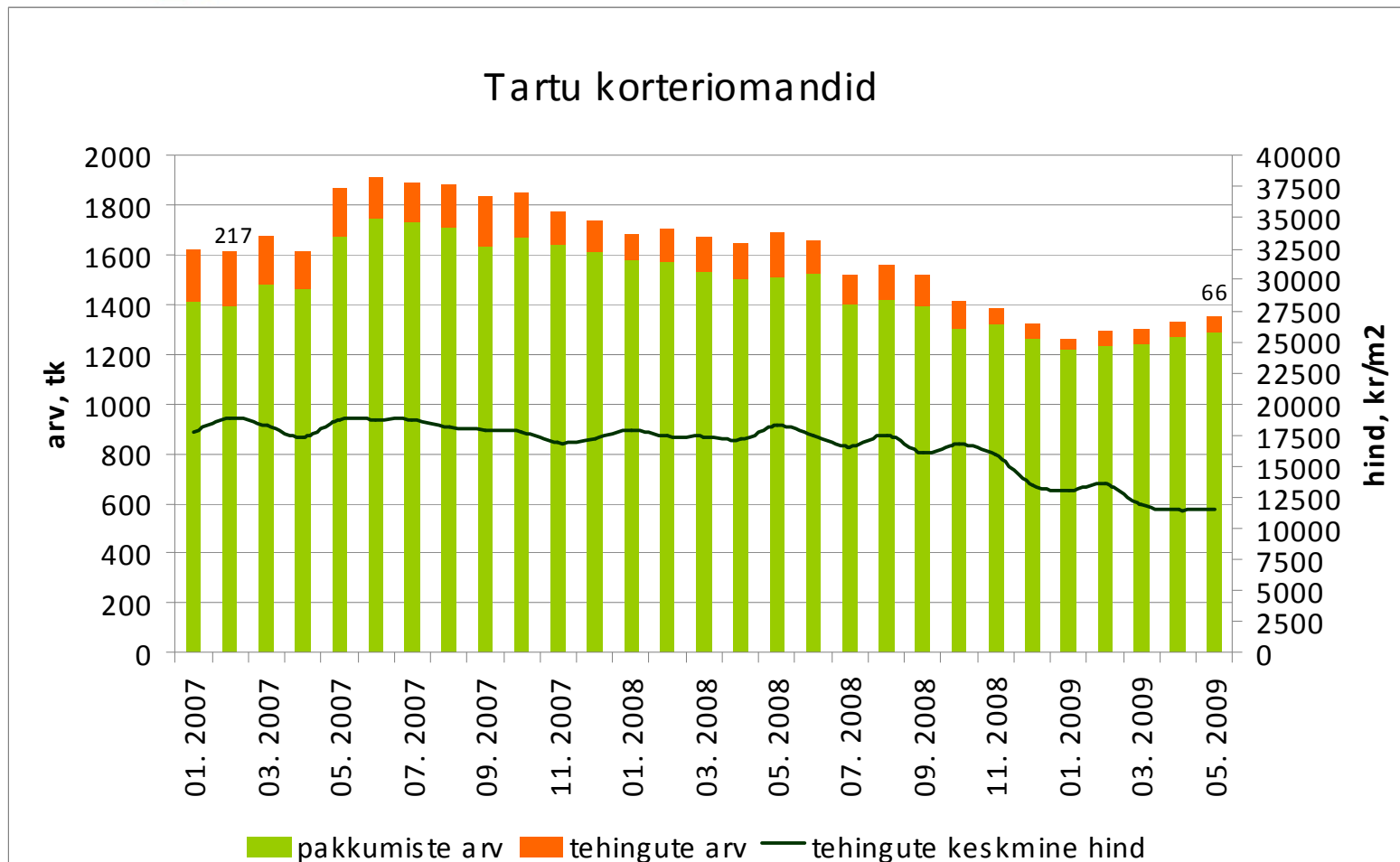


Tehingute arv on langenud 83%,  
tehinguhind 49%



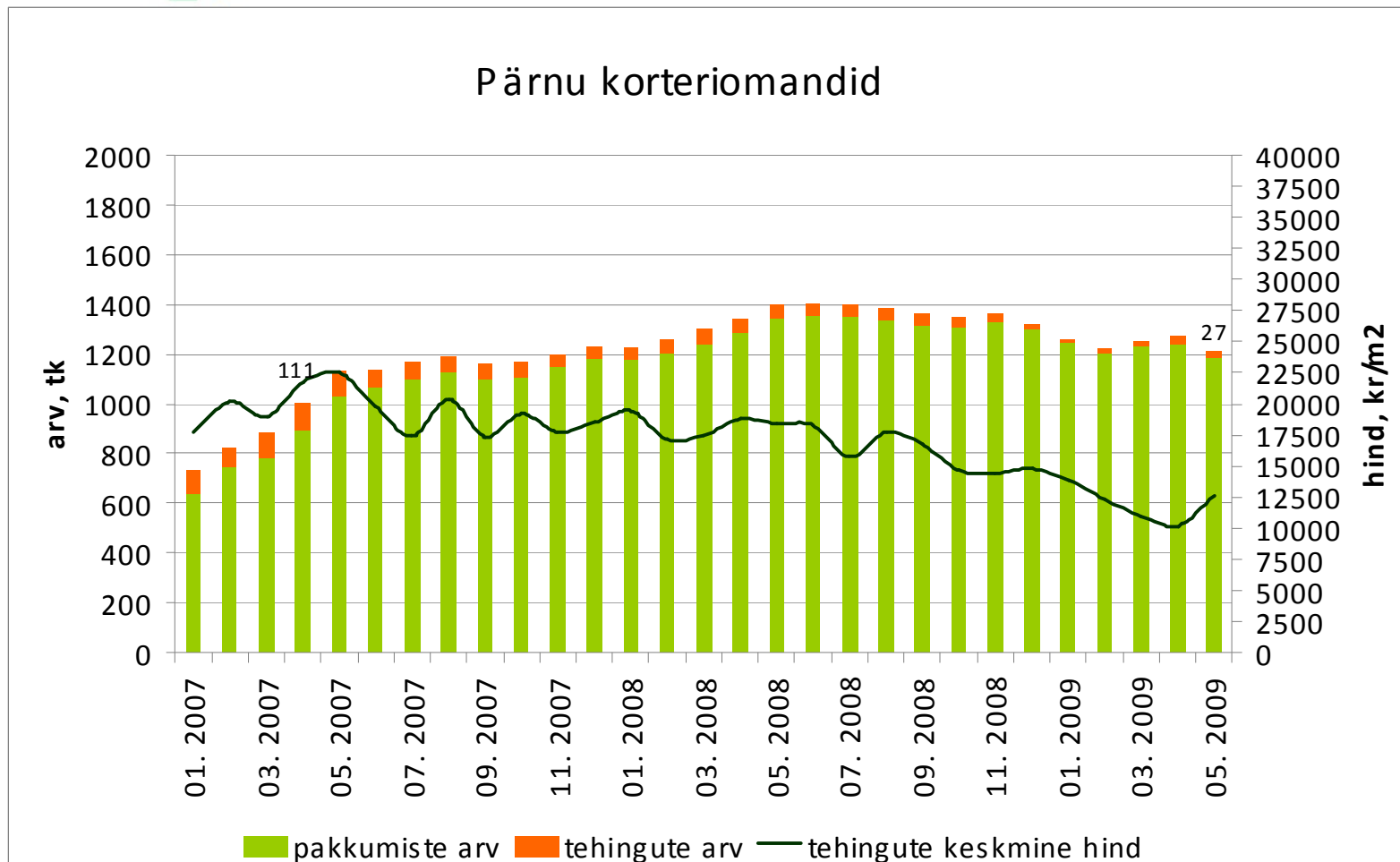
Allikad: Maa-amet, City24

Tehingute arv on langenud 70%,  
tehinguhind 39%



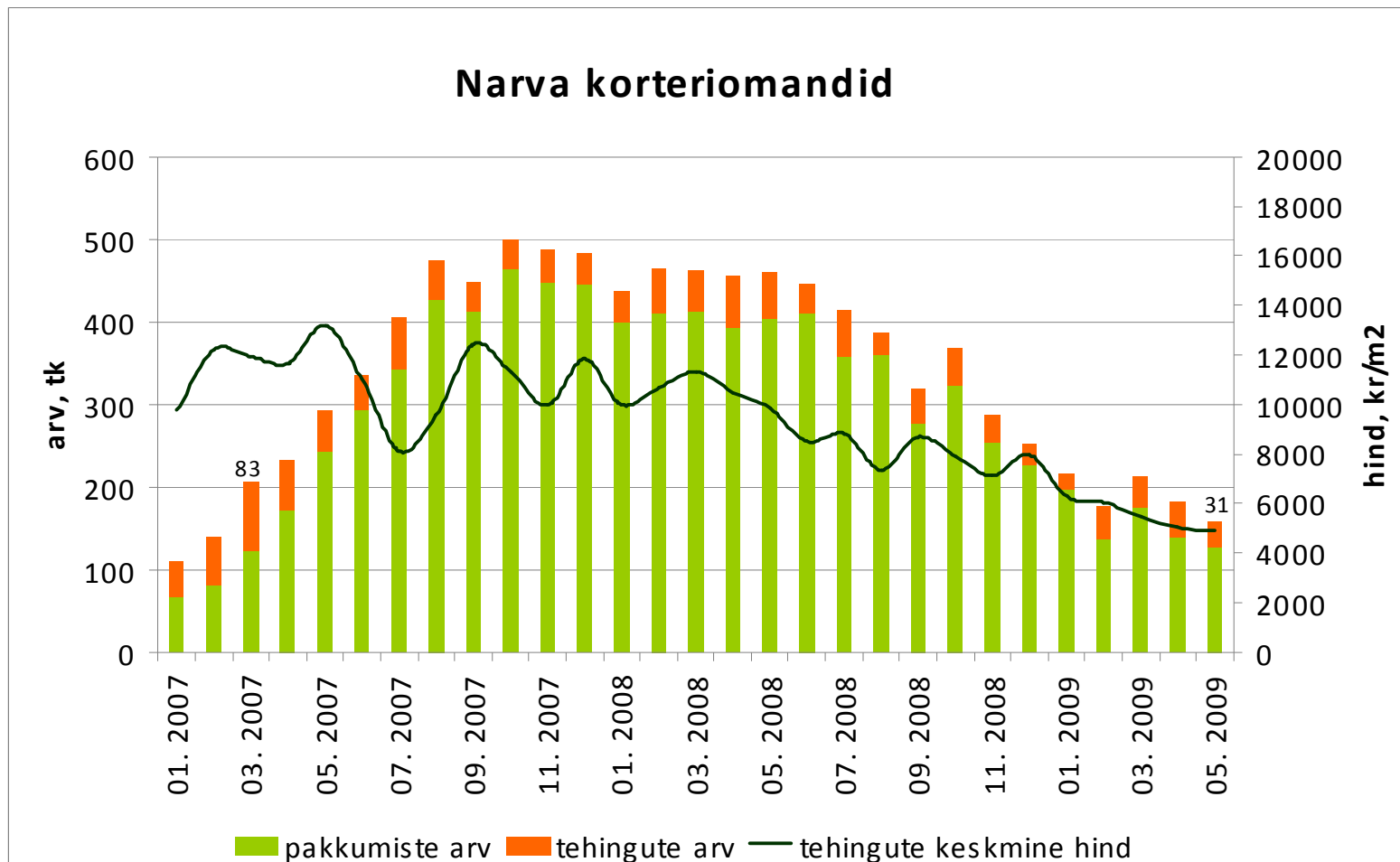
Allikad: Maa-amet, City24

Tehingute arv on langenud 76%,  
tehinguhind 44%



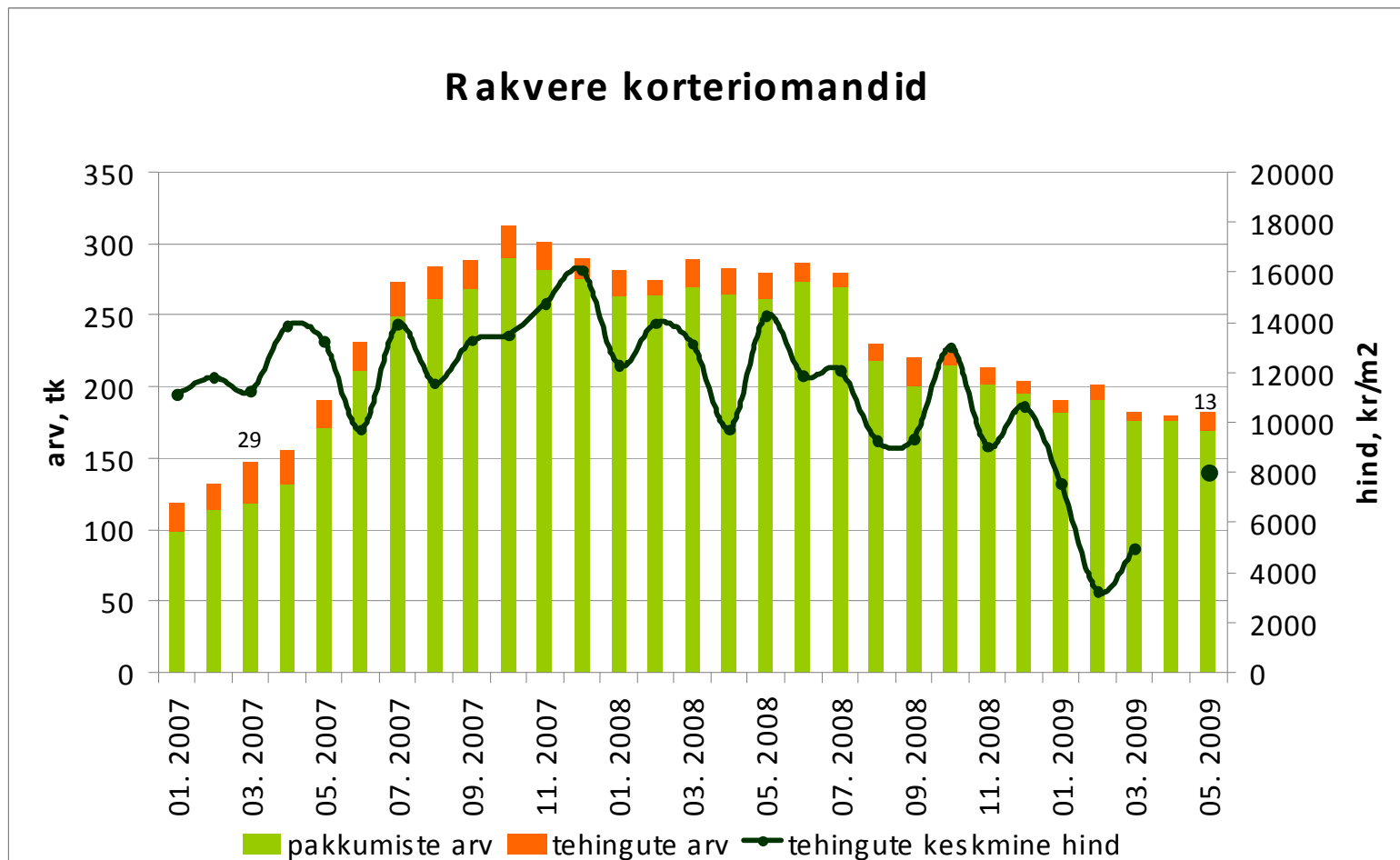
Allikad: Maa-amet, City24

Tehingute arv on langenud 63%,  
tehinguhind 63%



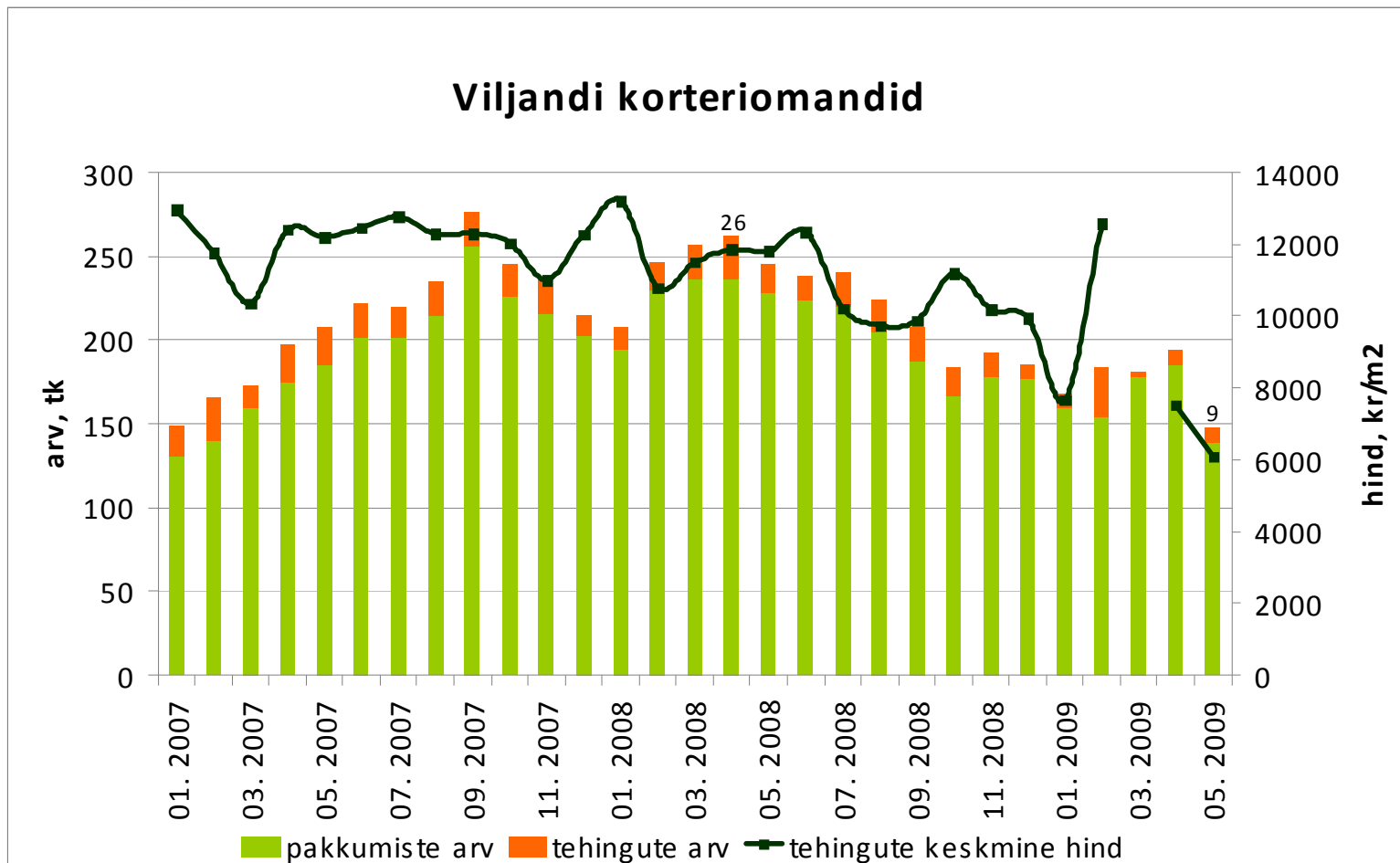
Allikad: Maa-amet, City24

Tehingute arv on langenud 55%,  
tehinguhind 50%



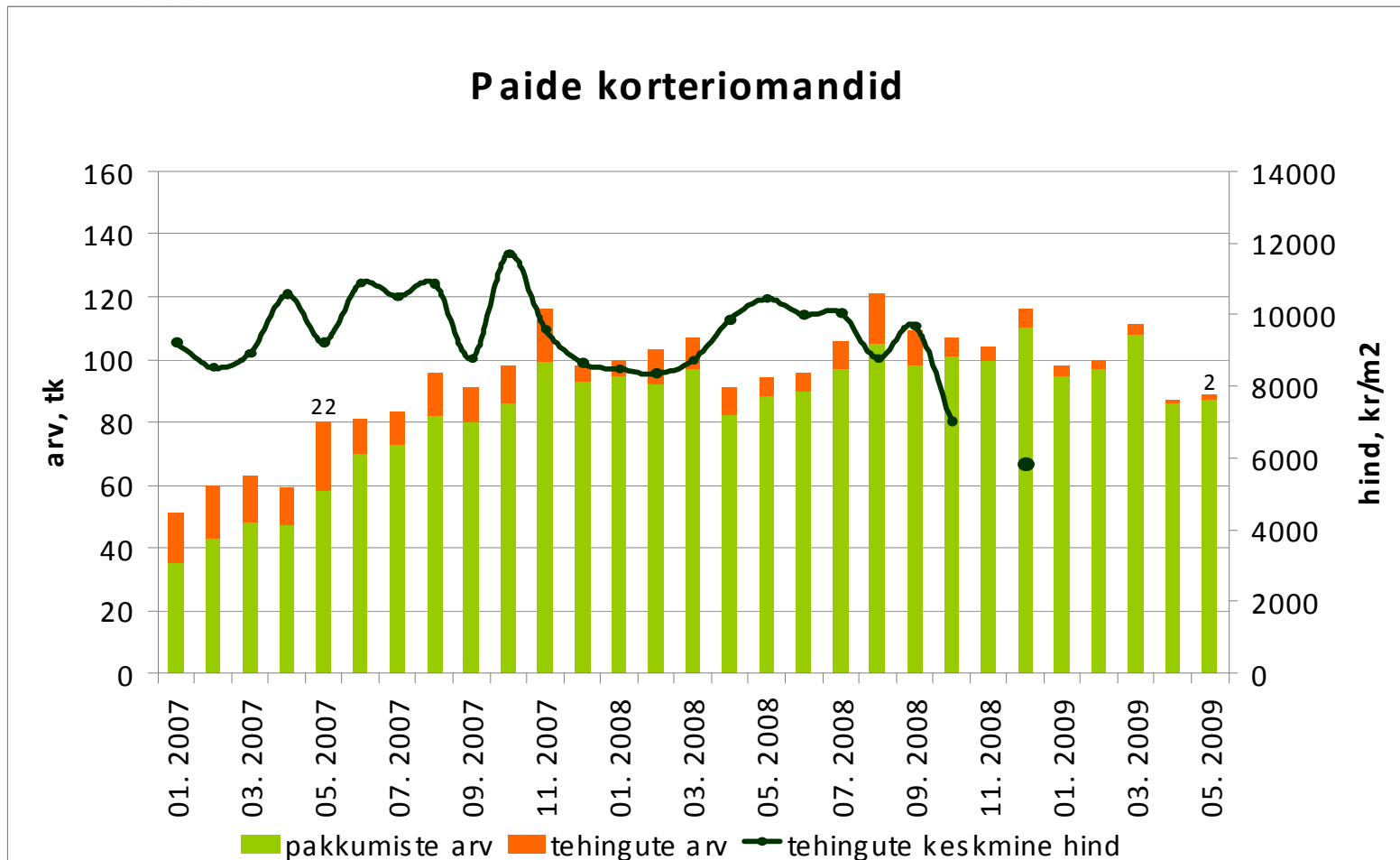
Allikad: Maa-amet, City24

Tehingute arv on langenud 65%,  
tehinguhind 54%.



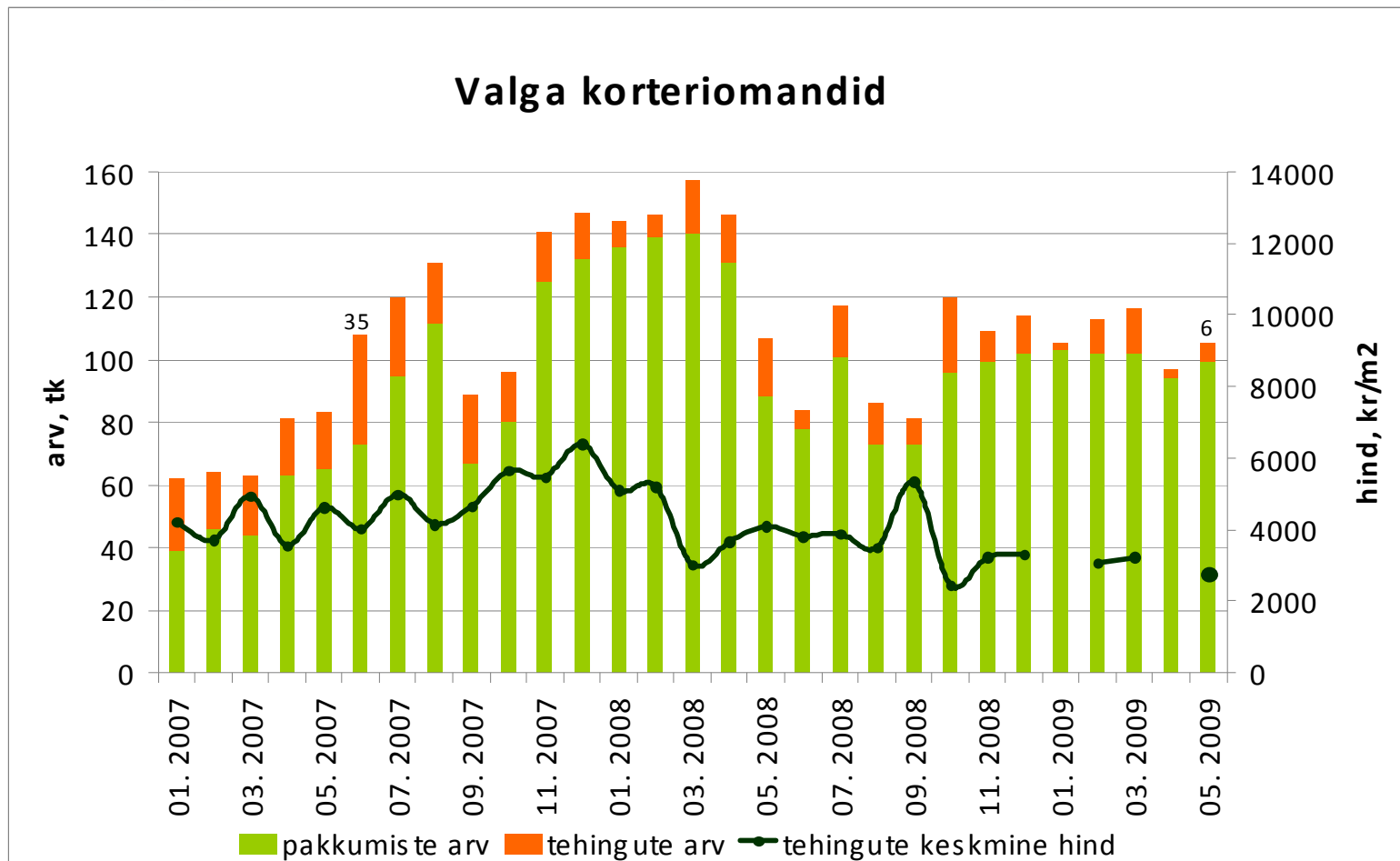
Allikad: Maa-amet, City24

Tehingute arv on langenud 91%,  
tehinguhind ca 50%



Allikad: Maa-amet, City24

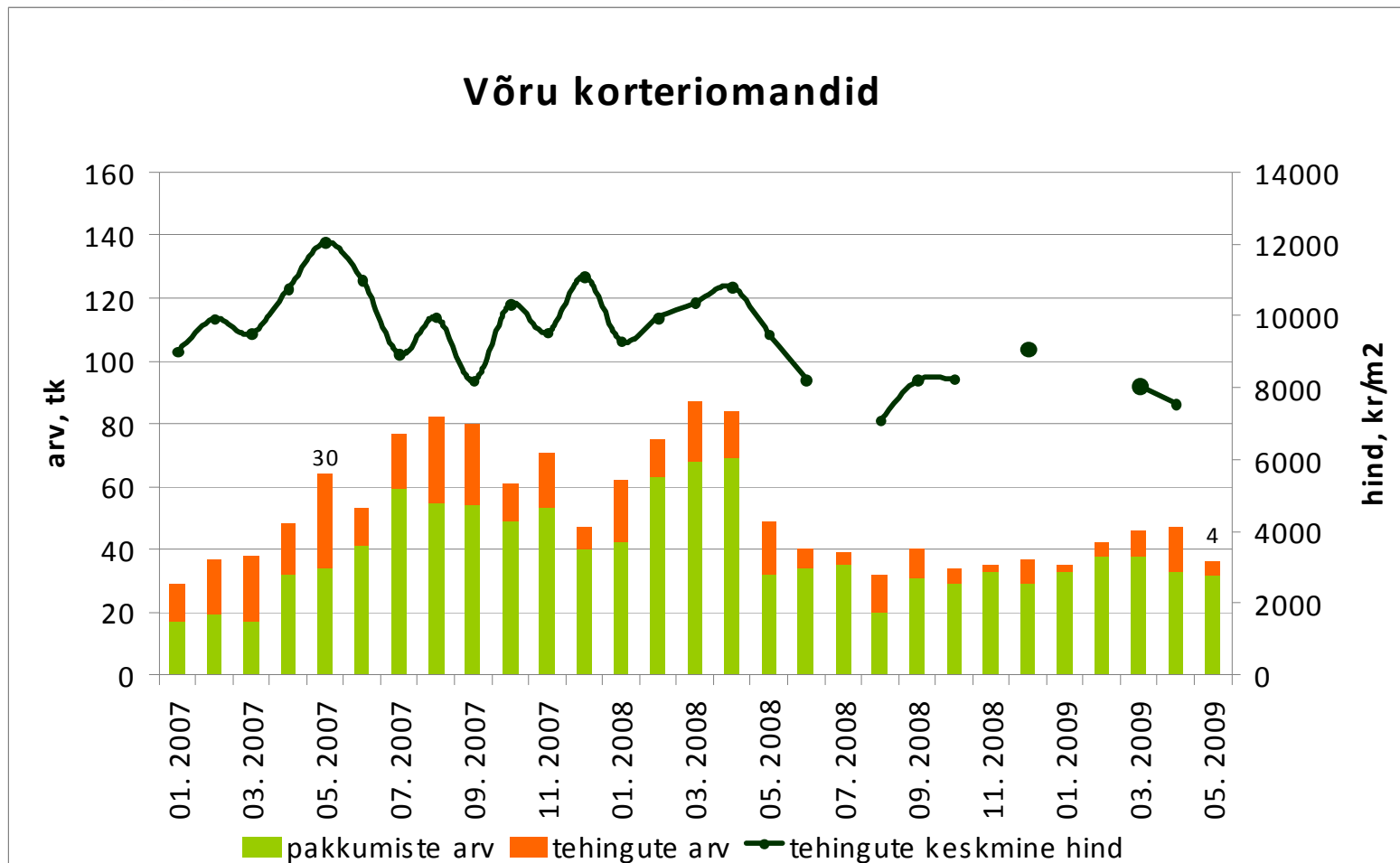
Tehingute arv on langenud 83%  
tehinguhind 57%



Allikad: Maa-amet, City24

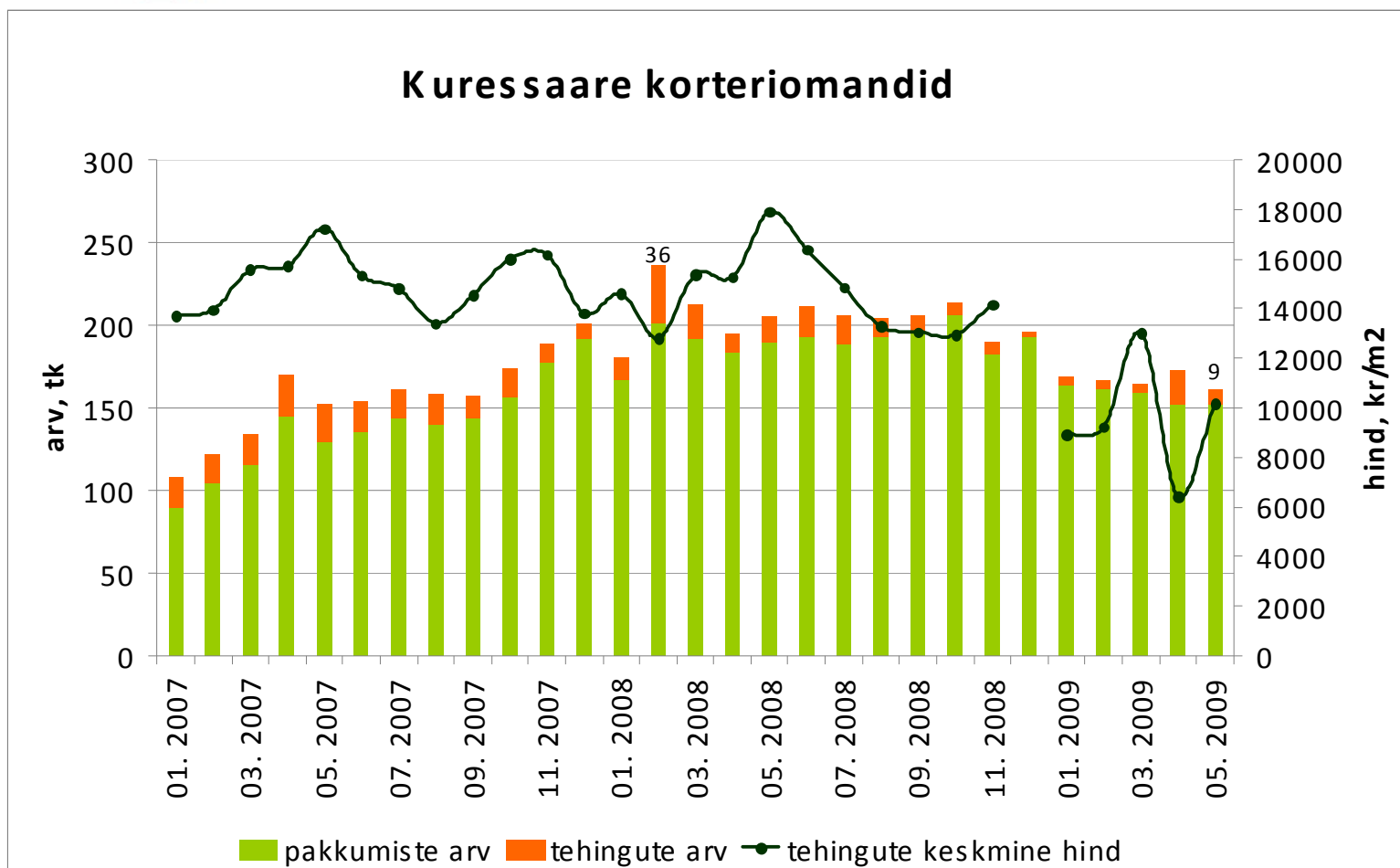


Tehingute arv on langenud 87%  
tehinguhind 37%



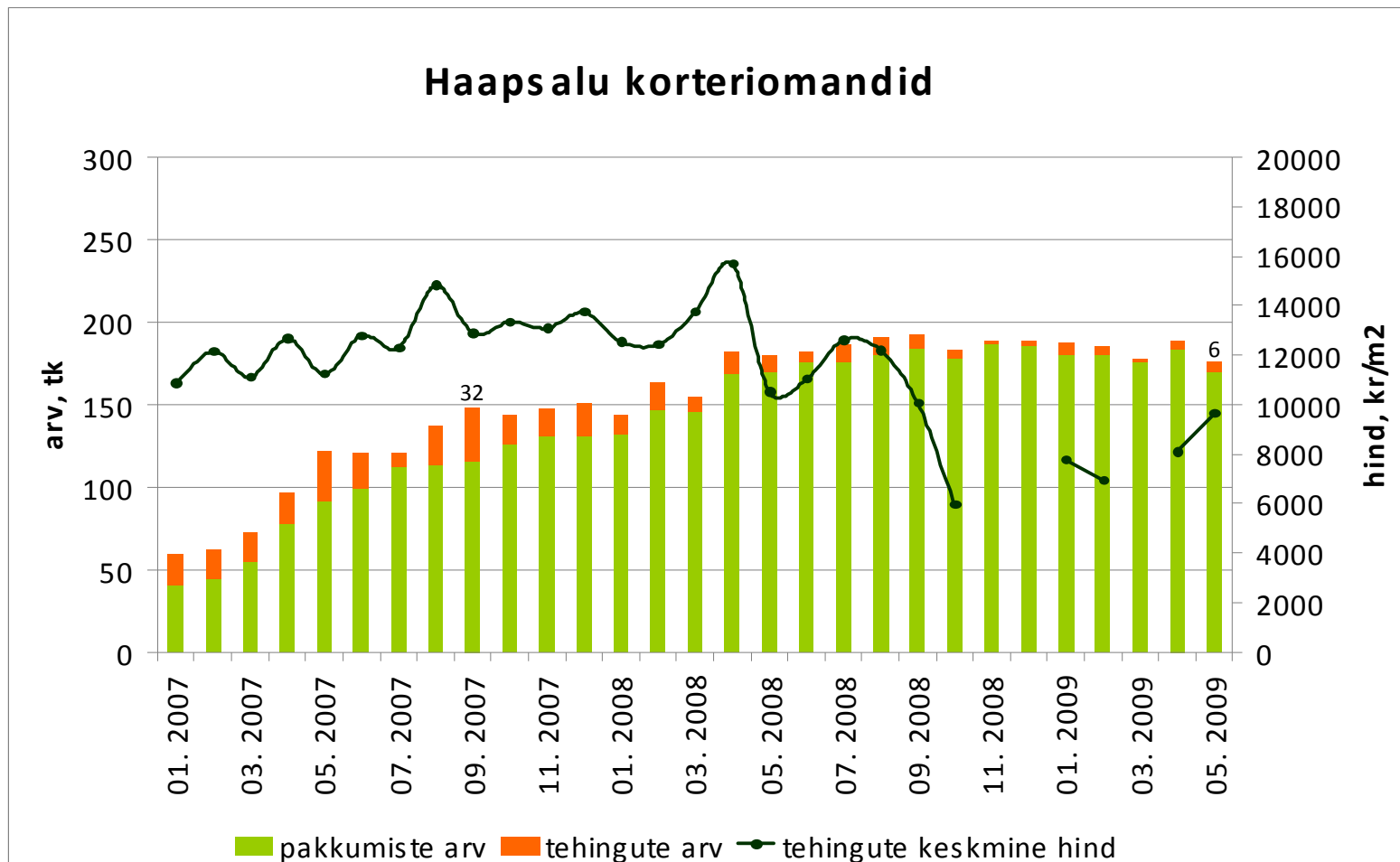
Allikad: Maa-amet, City24

Tehingute arv on langenud 76%  
tehinguhind 43%



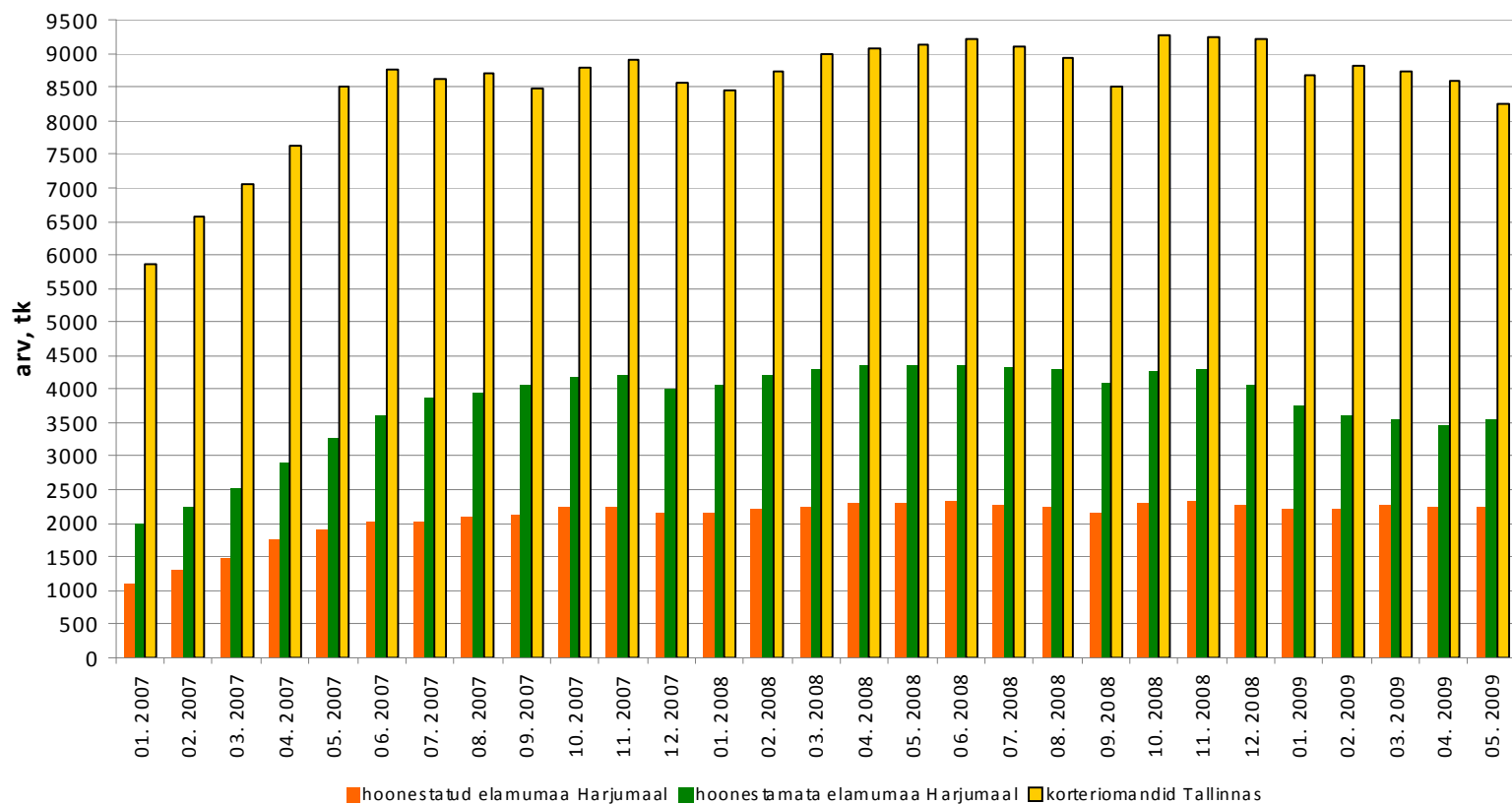
Allikad: Maa-amet, City24

Tehingute arv on langenud 81%  
tehinguhind ca 39%

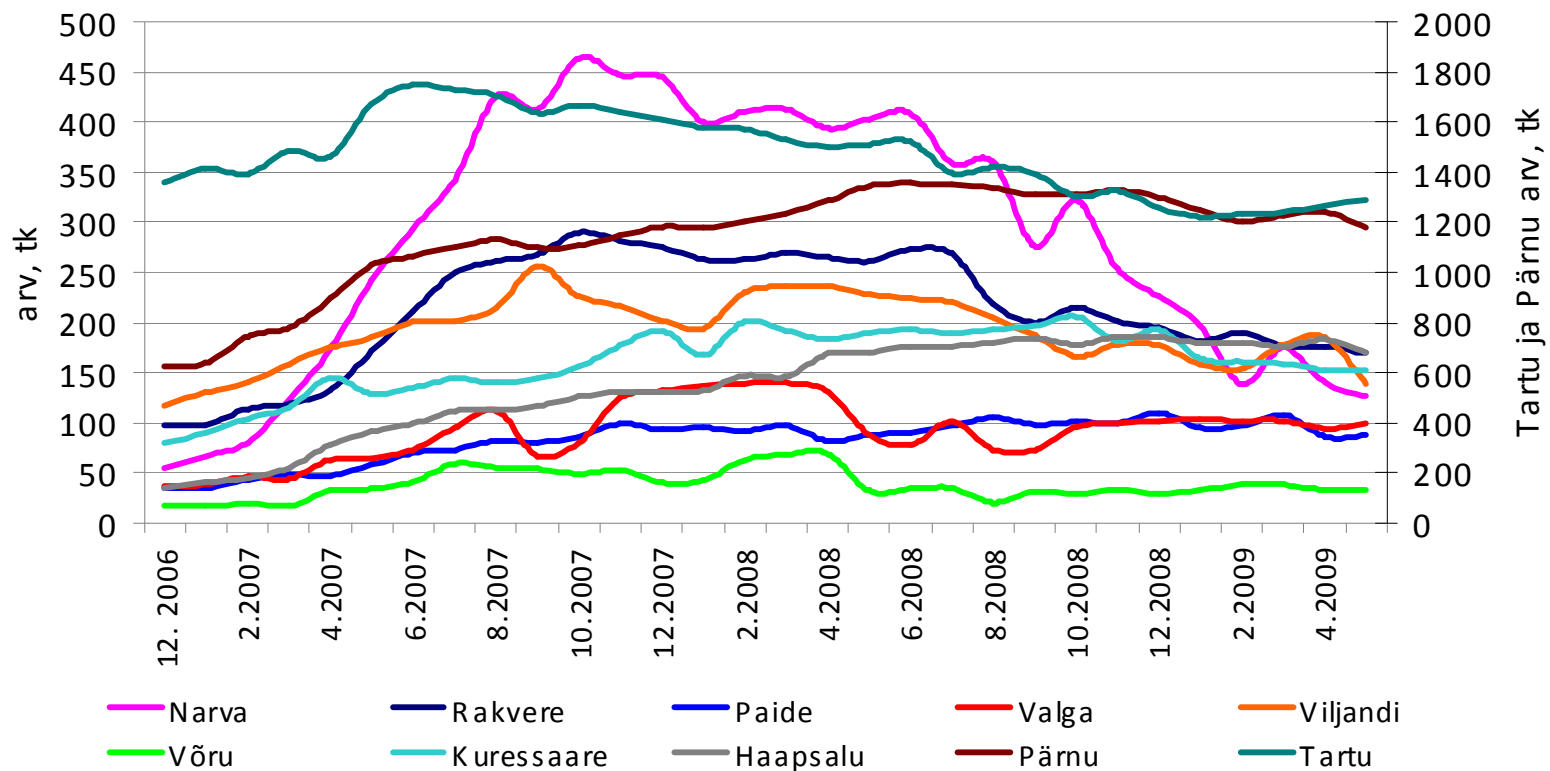


Allikad: Maa-amet, City24

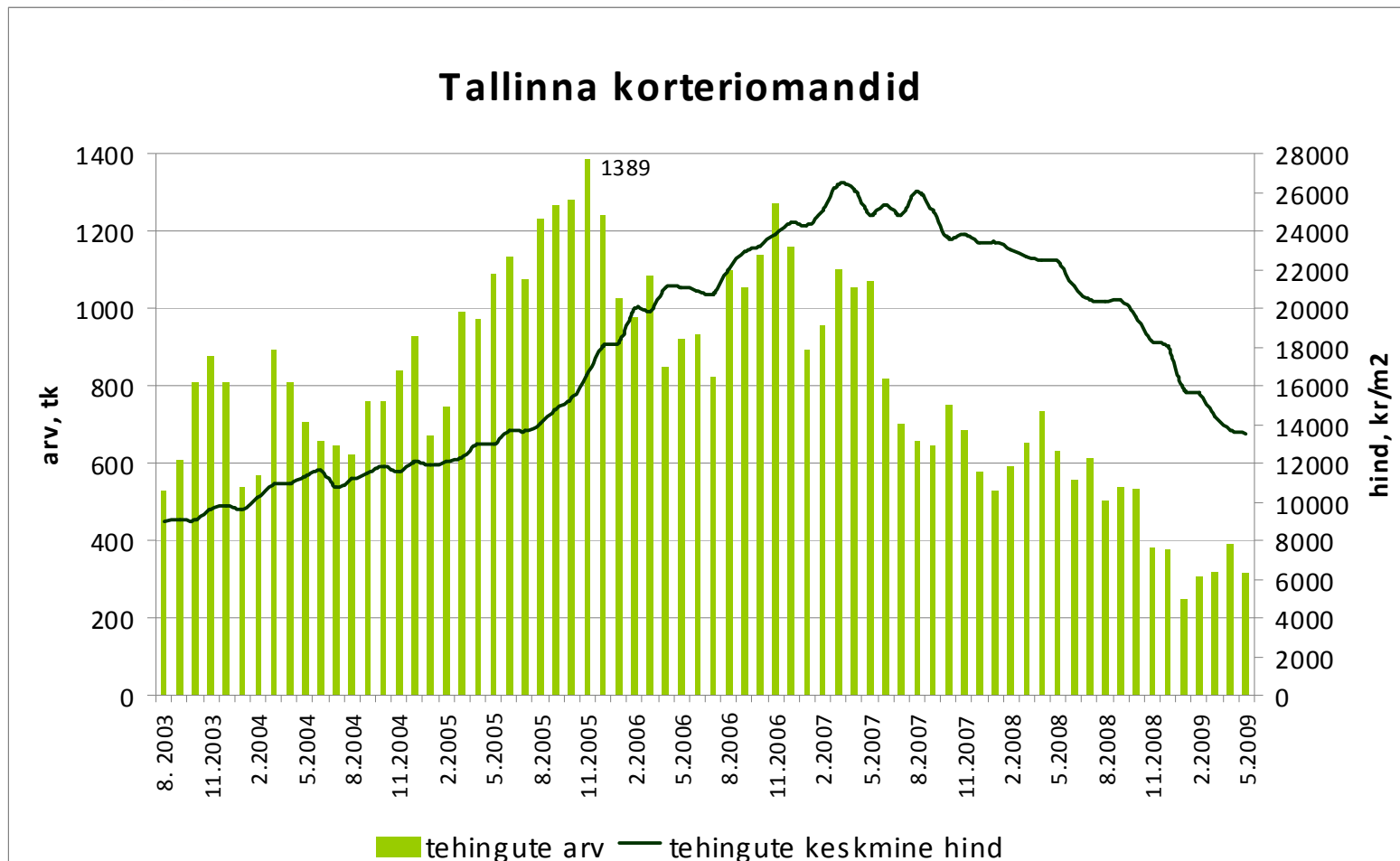
## Elukondliku kinnisvara pakkumiste arv



## Korteriomandite pakkumiste arv Eesti linnades (City24 baasil)

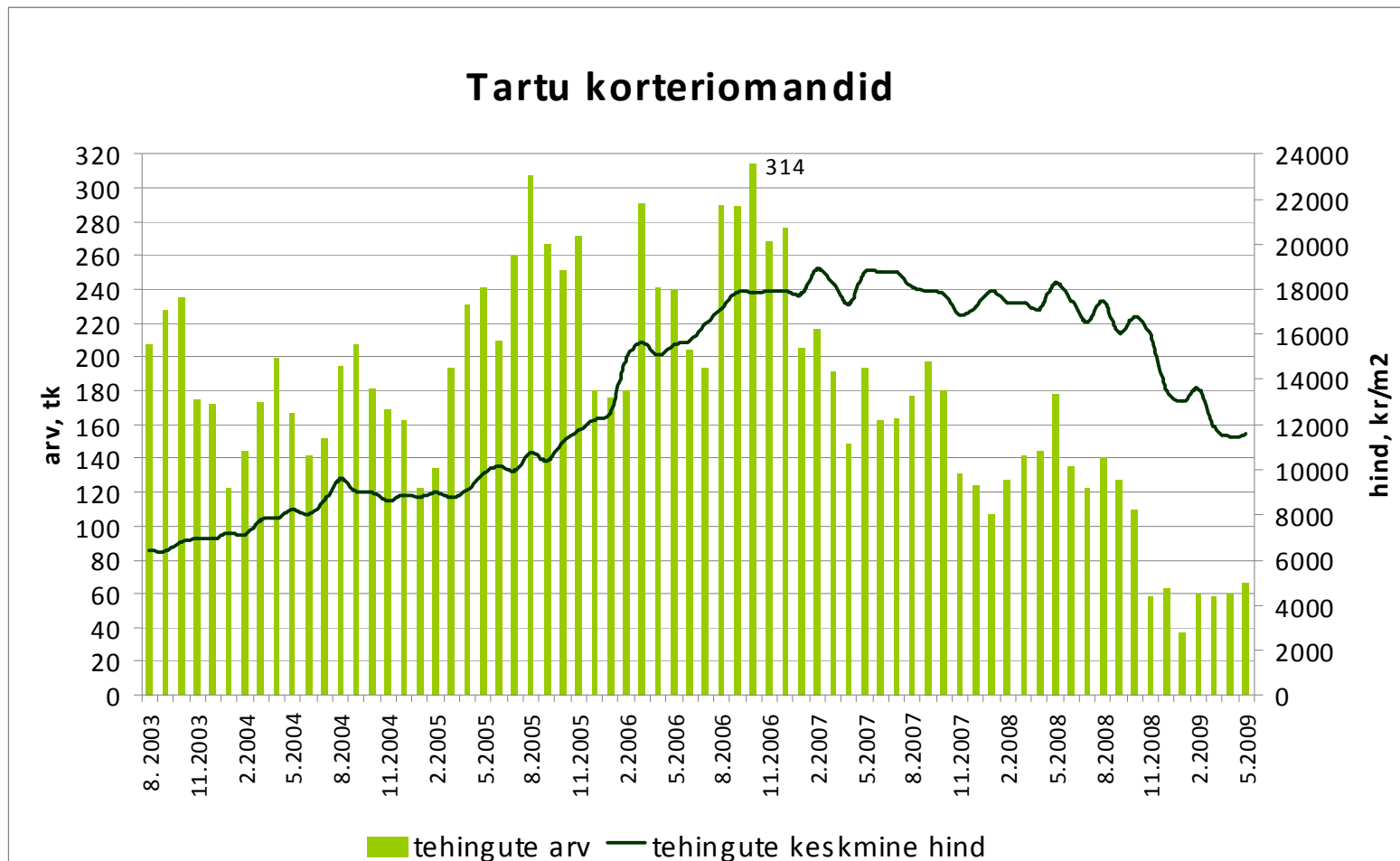


Tehingute arv on langenud 77%,  
tehinguhind 49%



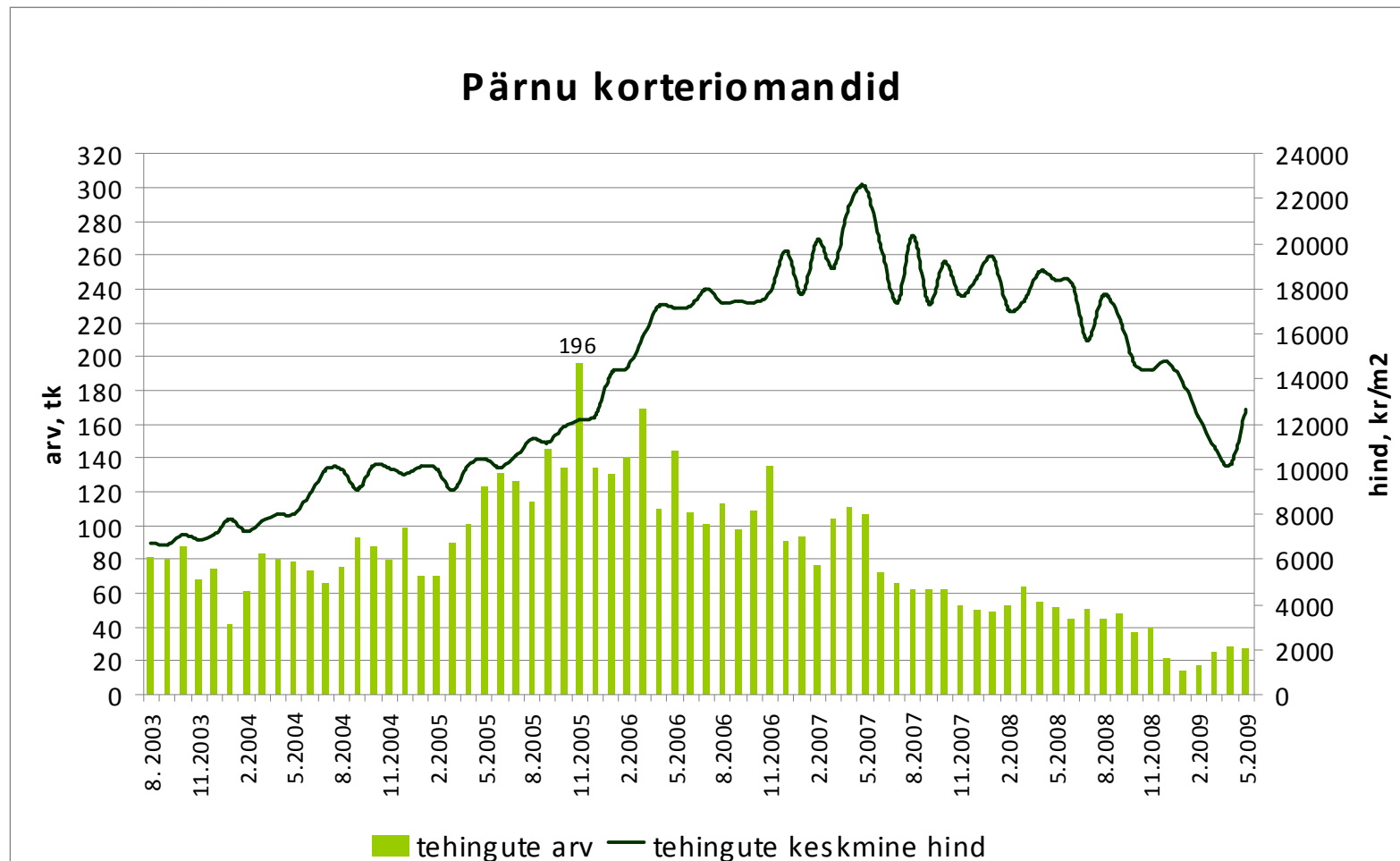
Allikas: Maa-amet

Tehingute arv on langenud 79%,  
tehinguhind 39%



Allikas: Maa-amet

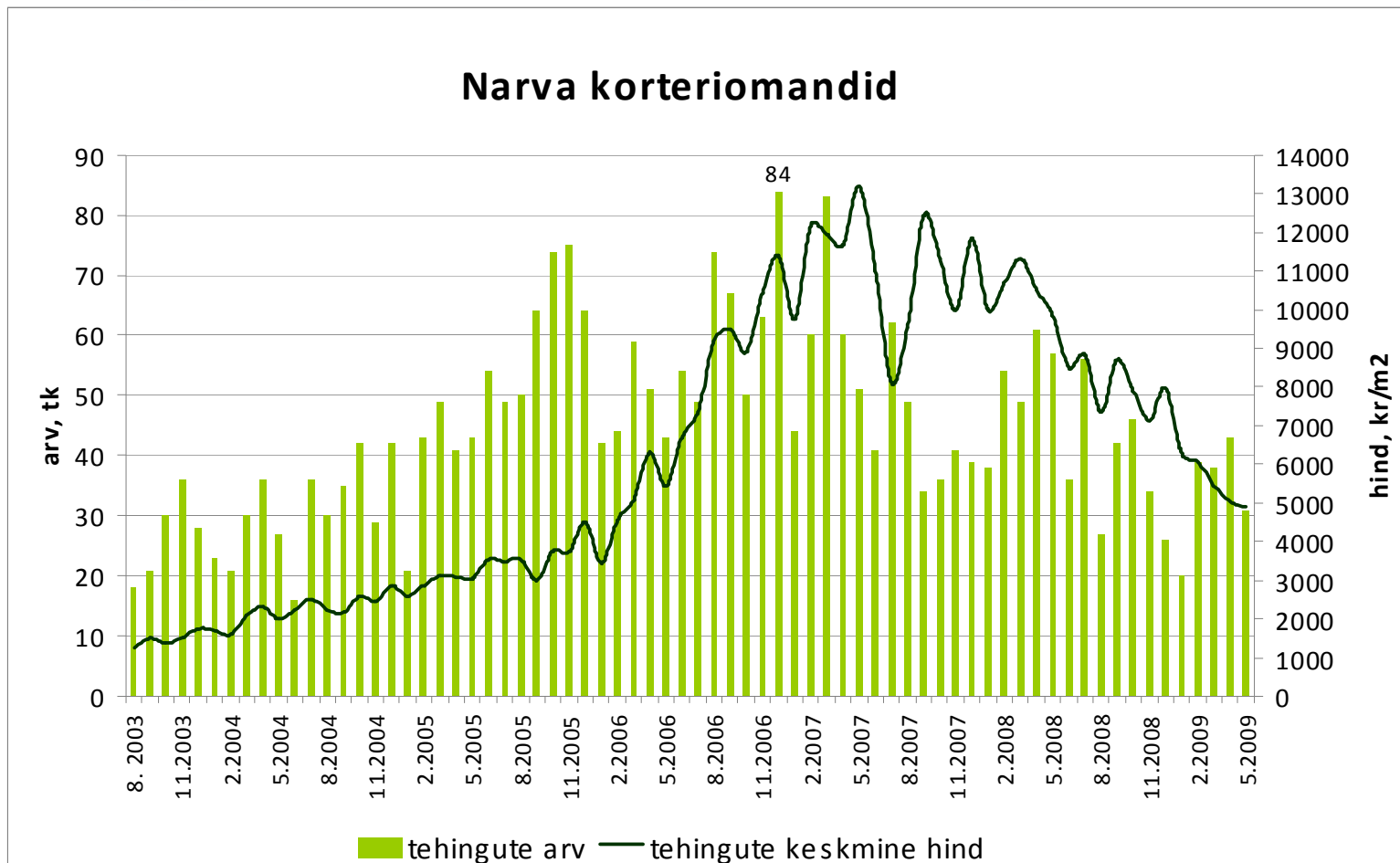
Tehingute arv on langenud 86%,  
tehinguhind 44%



Allikas: Maa-amet

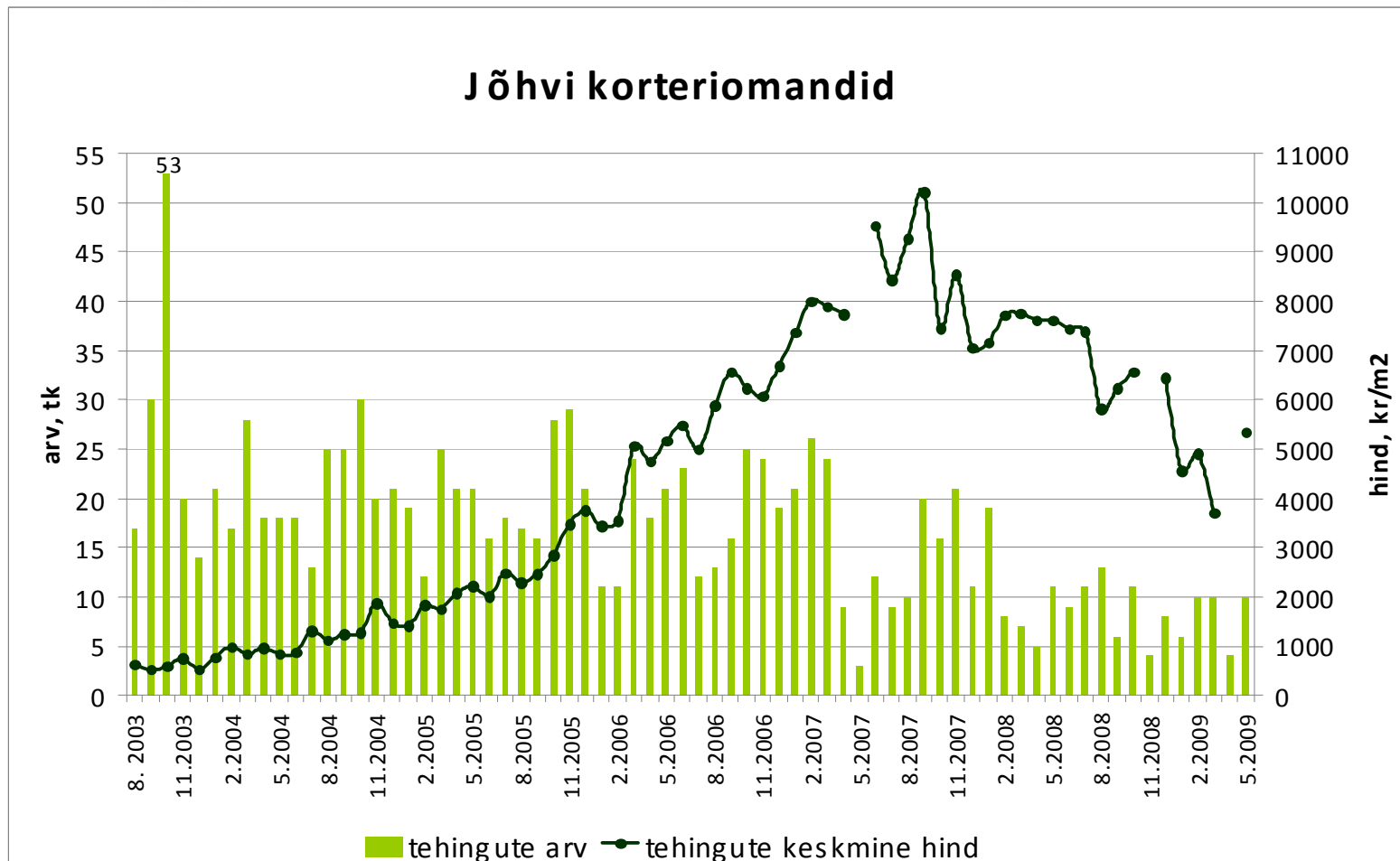


Tehingute arv on langenud 63%,  
tehinguhind 63 %



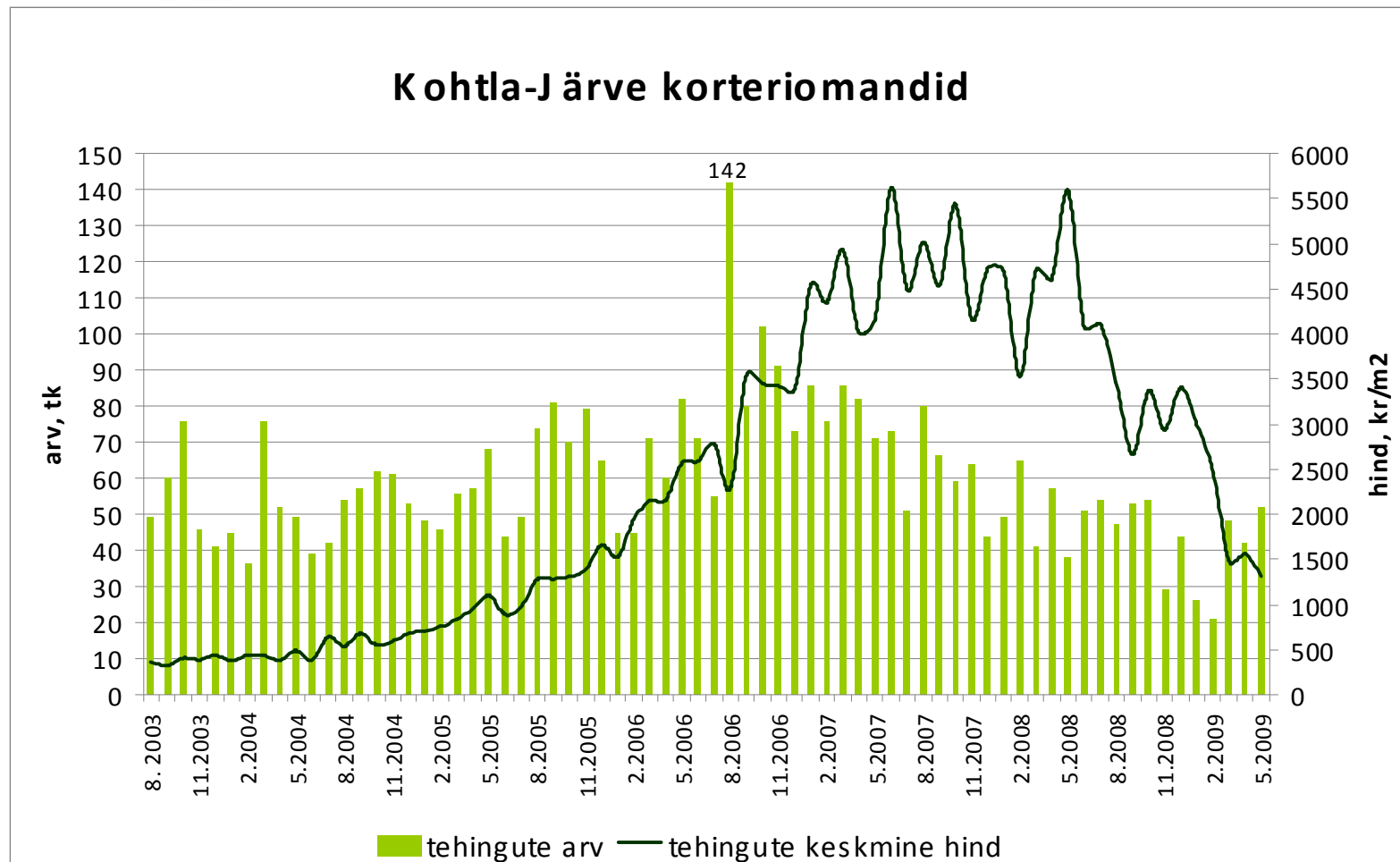
Allikas: Maa-amet

Tehingute arv on langenud 81%,  
tehinguhind 48%



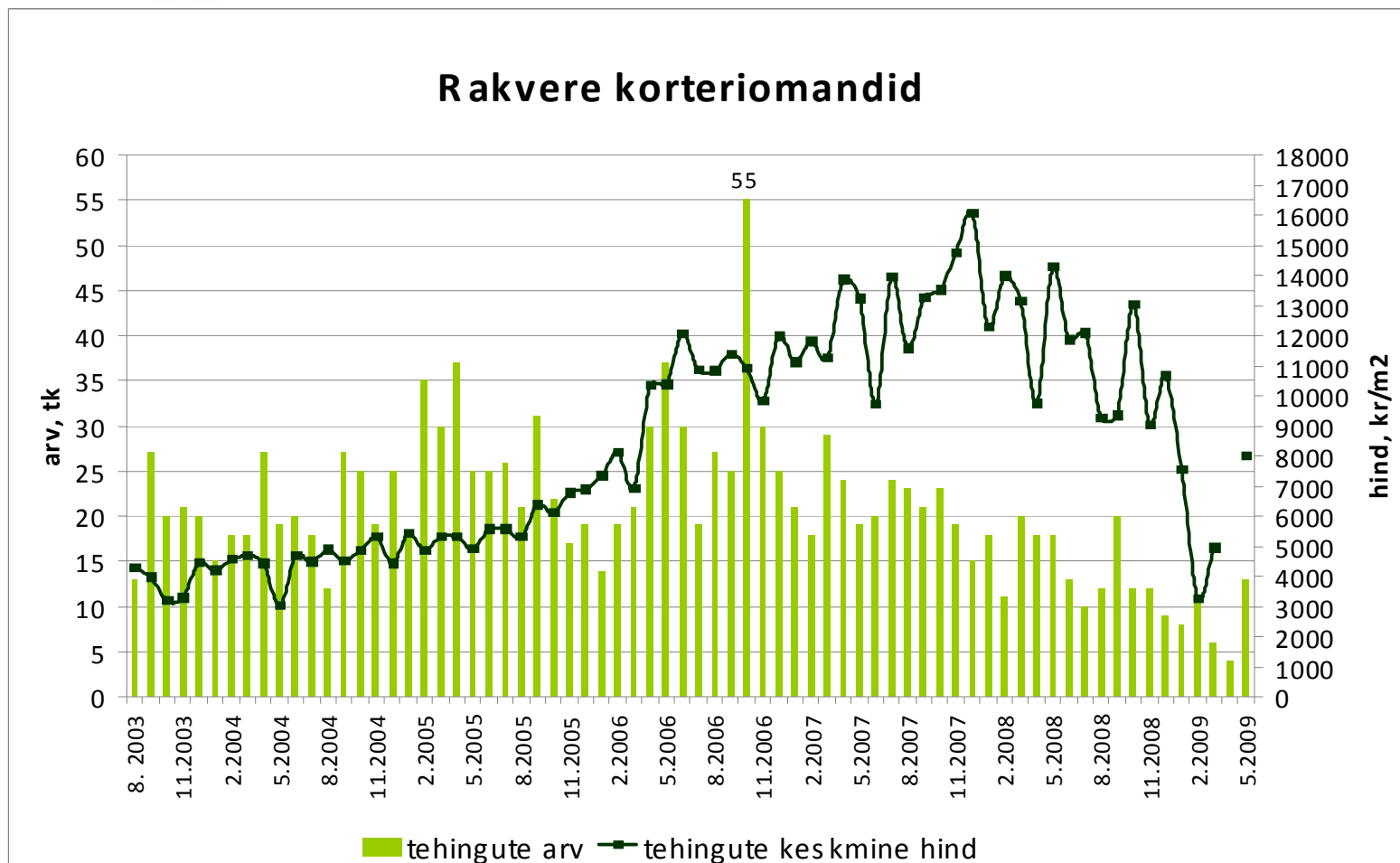
Allikas: Maa-amet

Tehingute arv on langenud 63%,  
tehinguhind 77%



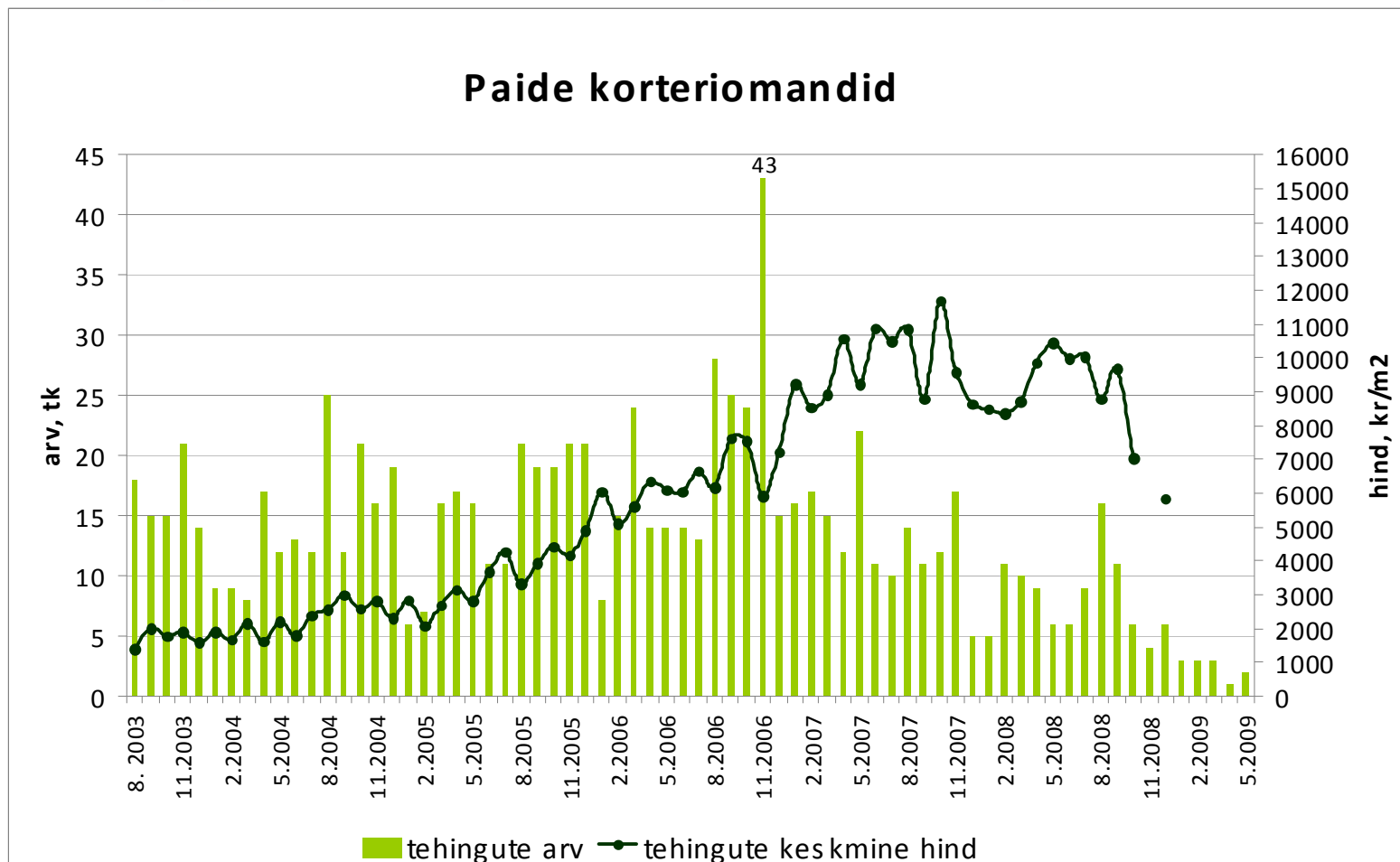
Allikas: Maa-amet

Tehingute arv on langenud 76%,  
tehinguhind 50%



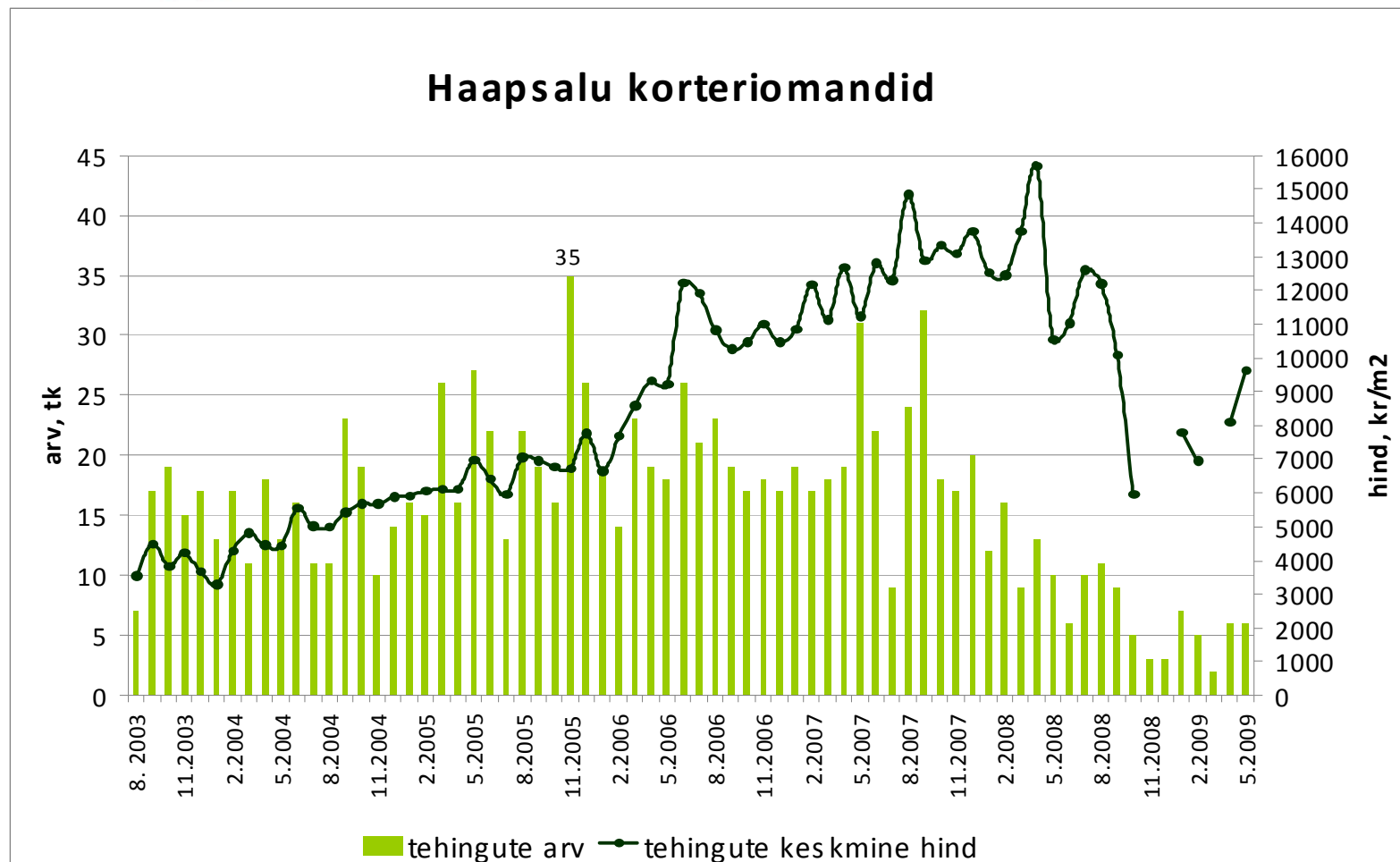
Allikas: Maa-amet

Tehingute arv on langenud 95%,  
tehinguhind ca 50%



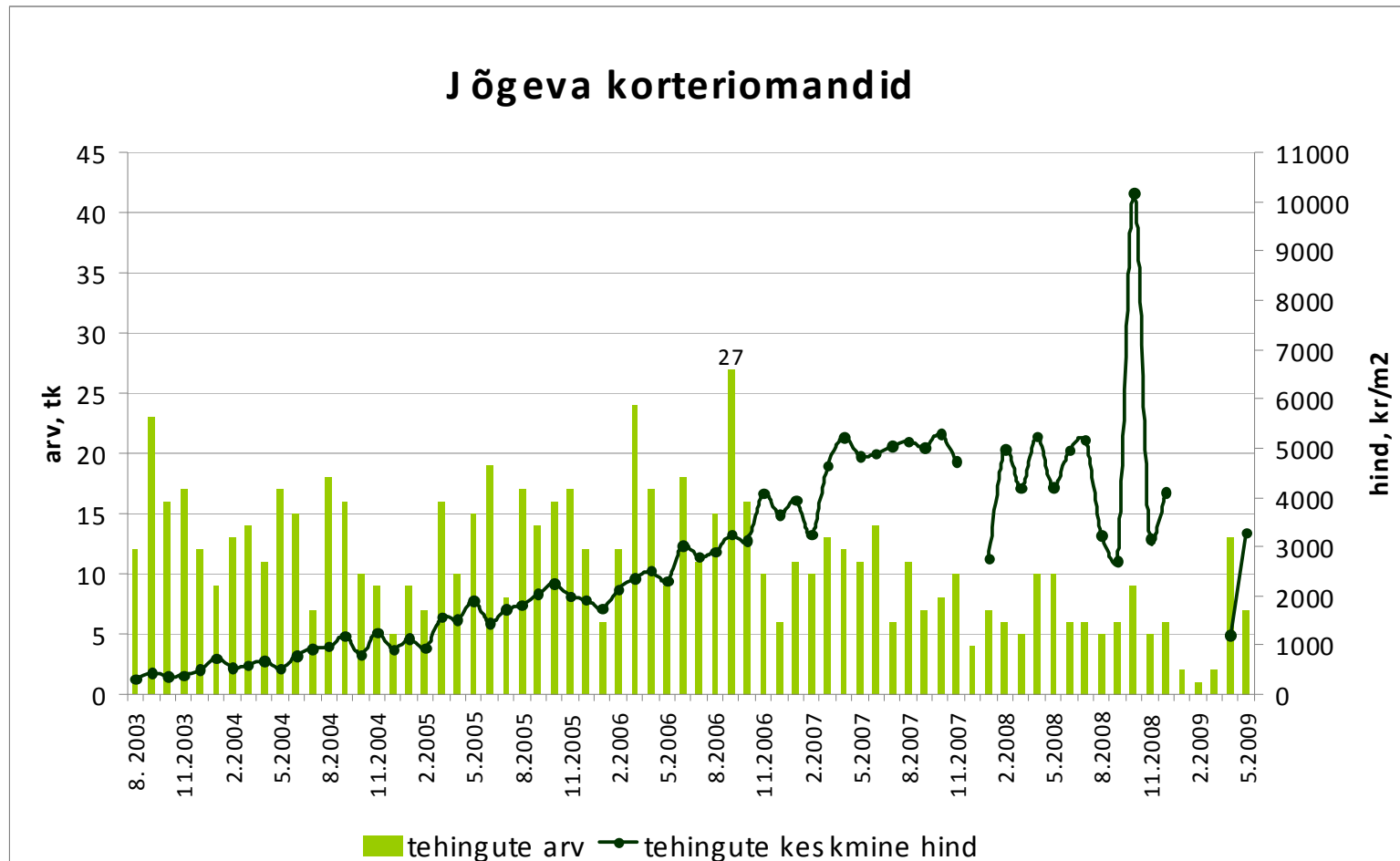
Allikas: Maa-amet

Tehingute arv on langenud 83%,  
tehinguhind ca 39%



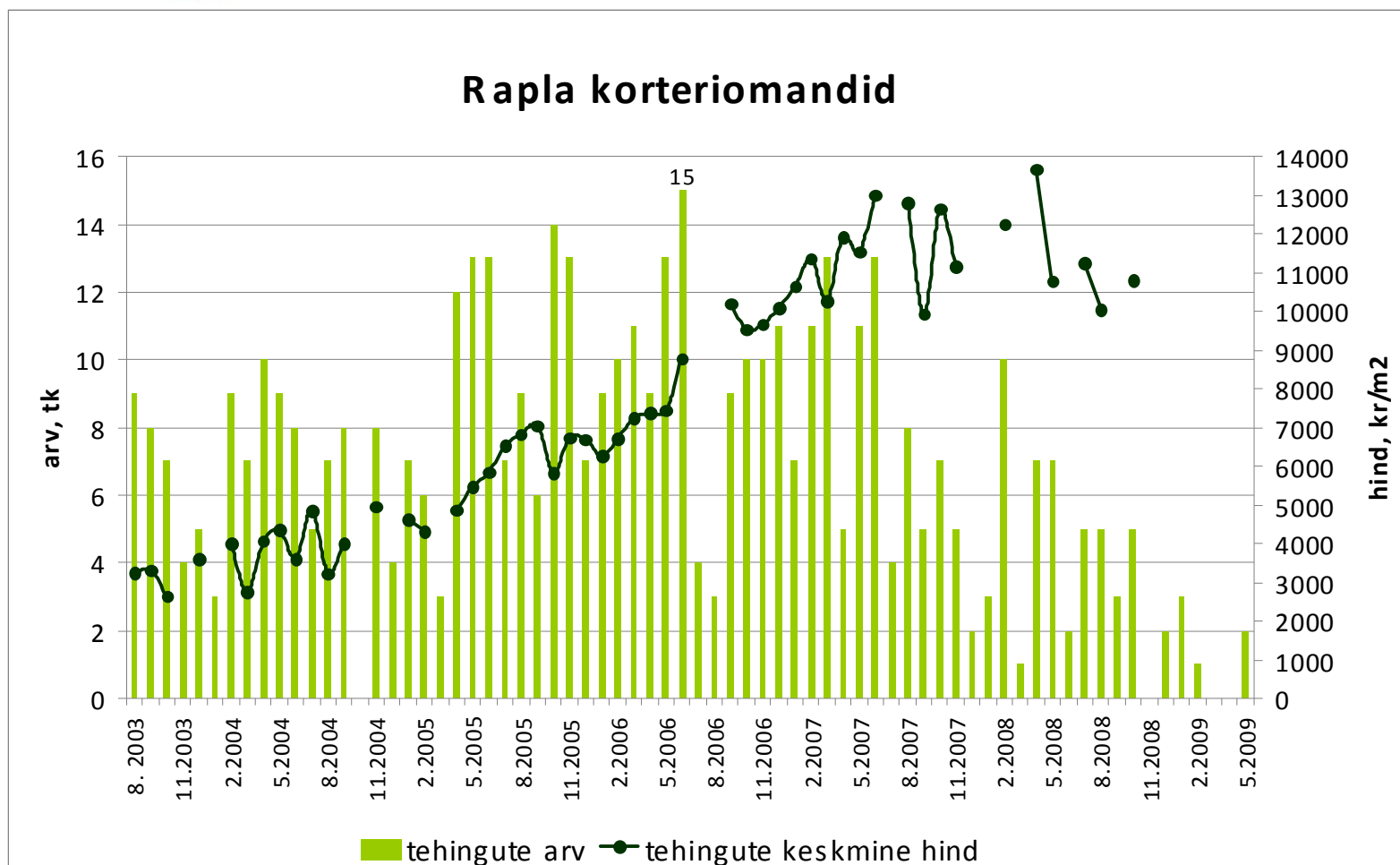
Allikas: Maa-amet

Tehingute arv on langenud 74%,  
tehinguhind ca 38%



Allikas: Maa-amet

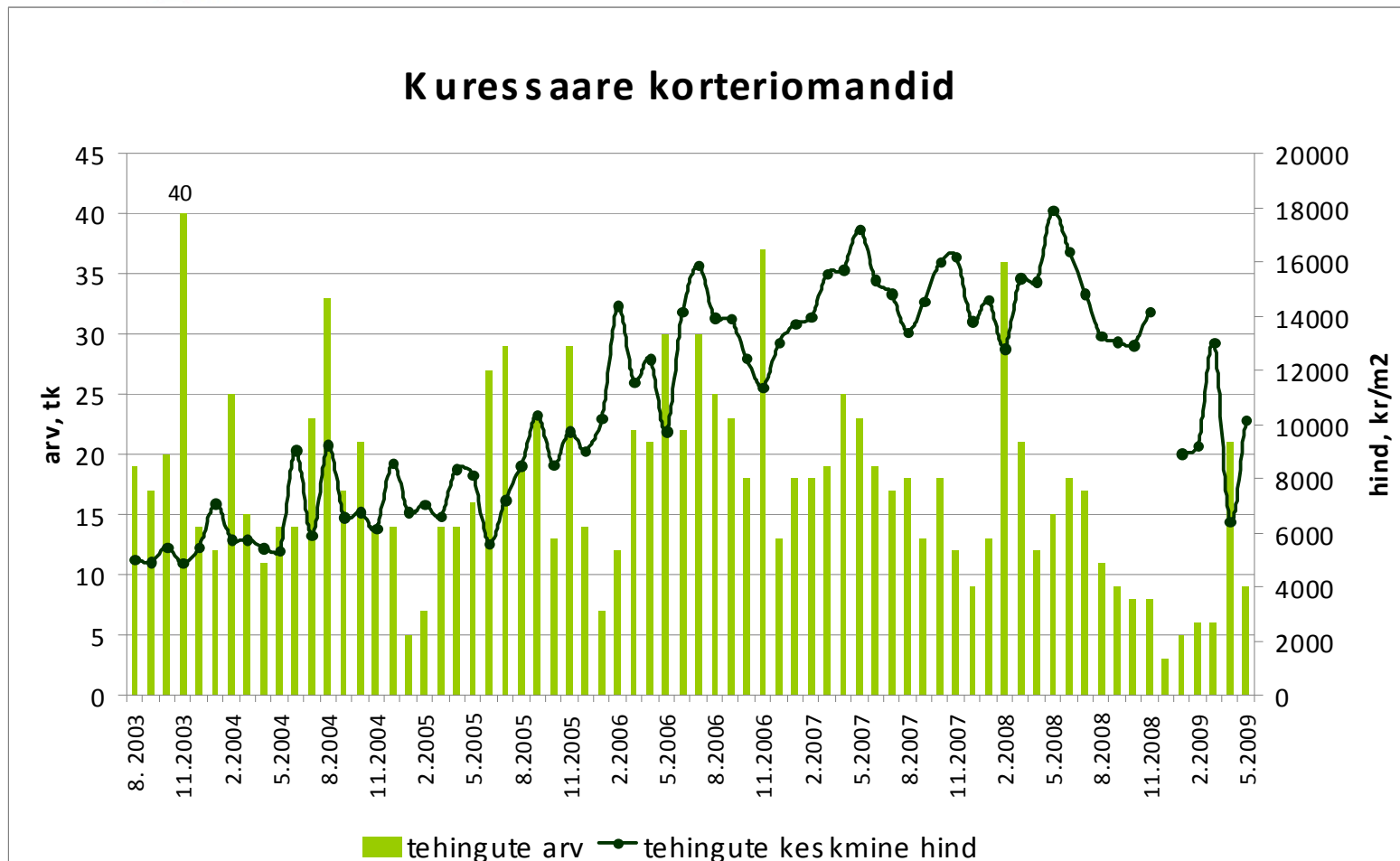
Tehingute arv on langenud 87%,  
tehinguhind ca 21%



Allikas: Maa-amet



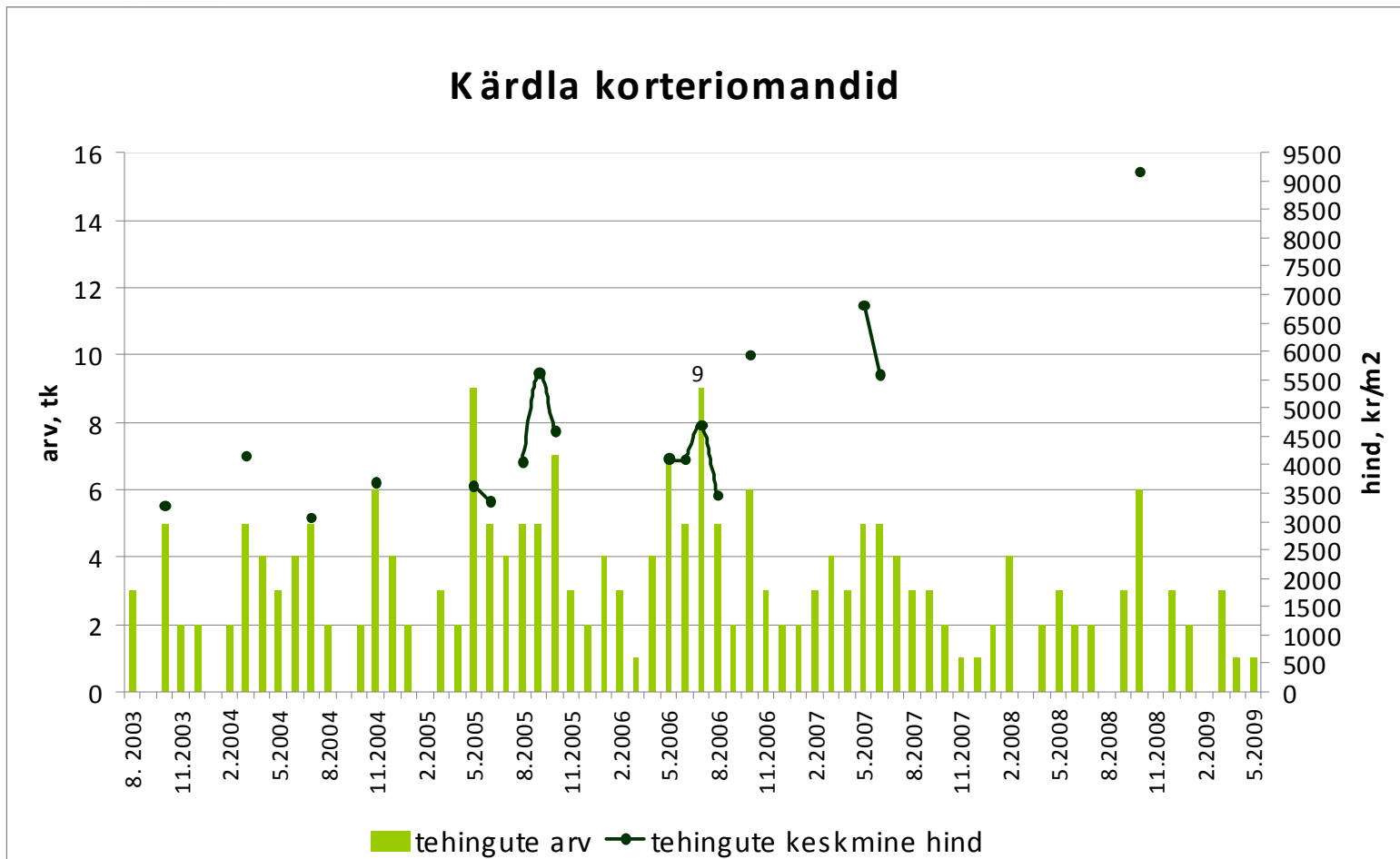
Tehingute arv on langenud 76%,  
tehinguhind 43%



Allikas: Maa-amet

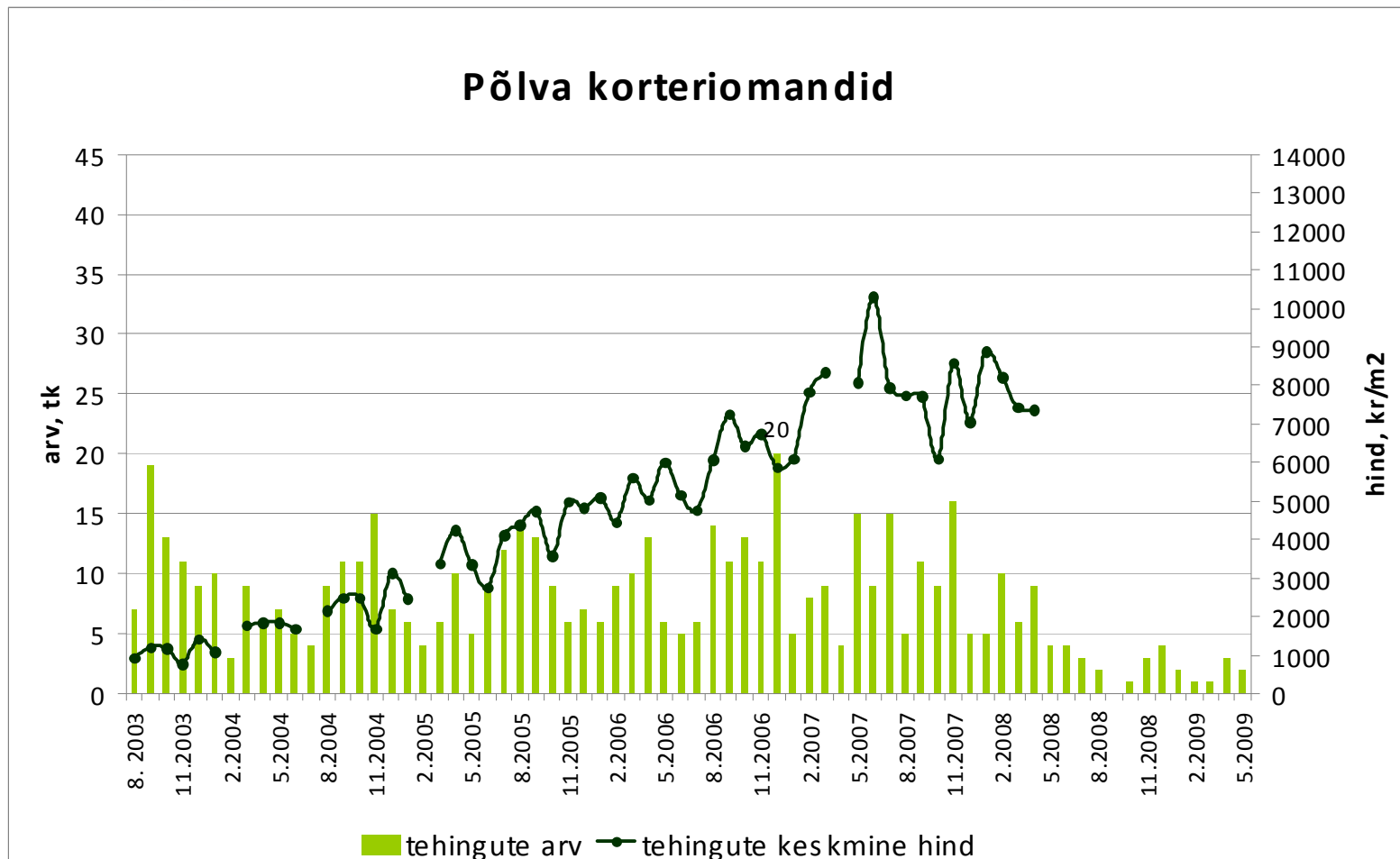


Tehingute arv on langenud 89%



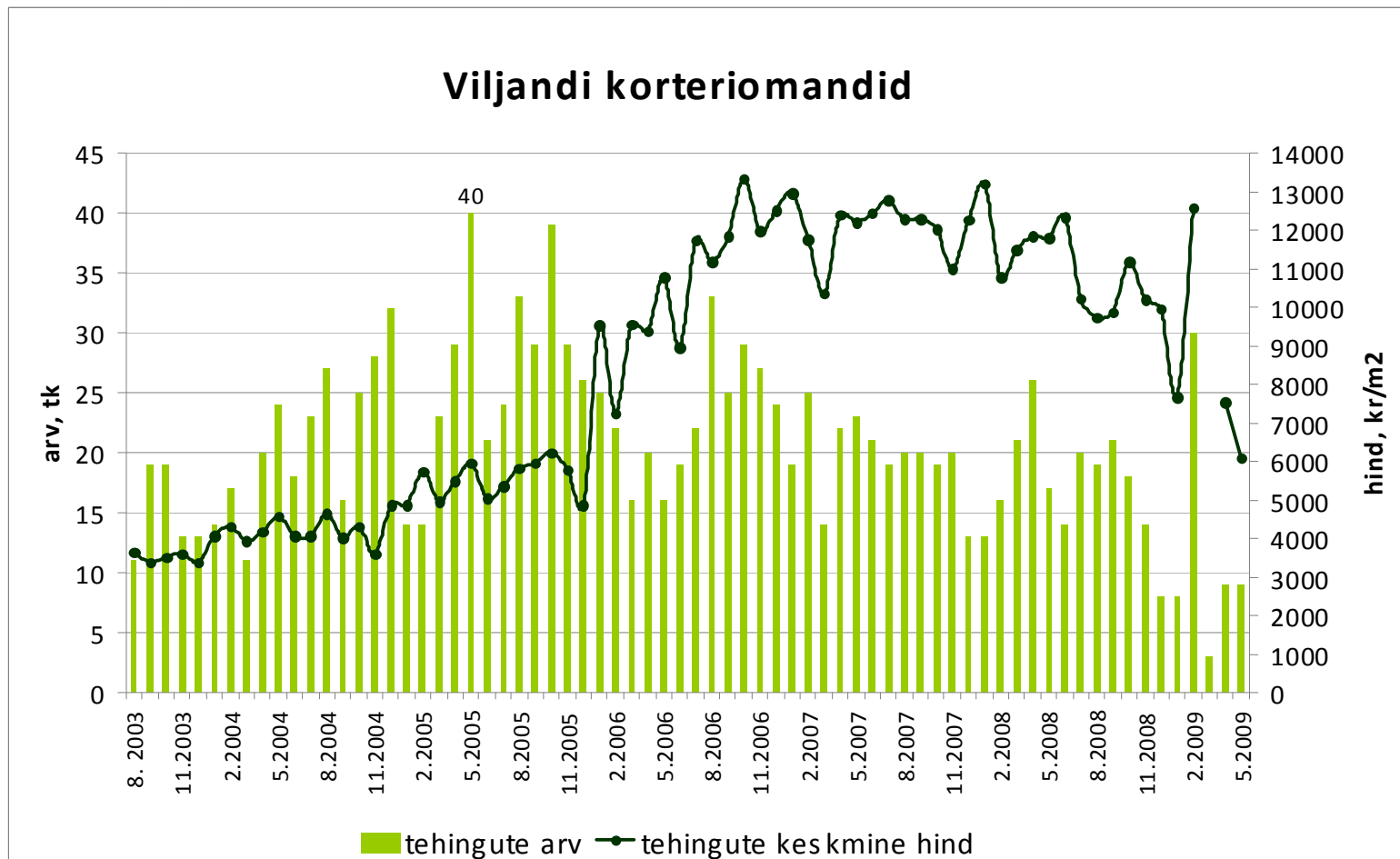
Allikas: Maa-amet

Tehingute arv on langenud 90%,  
tehinguhind ca 28%



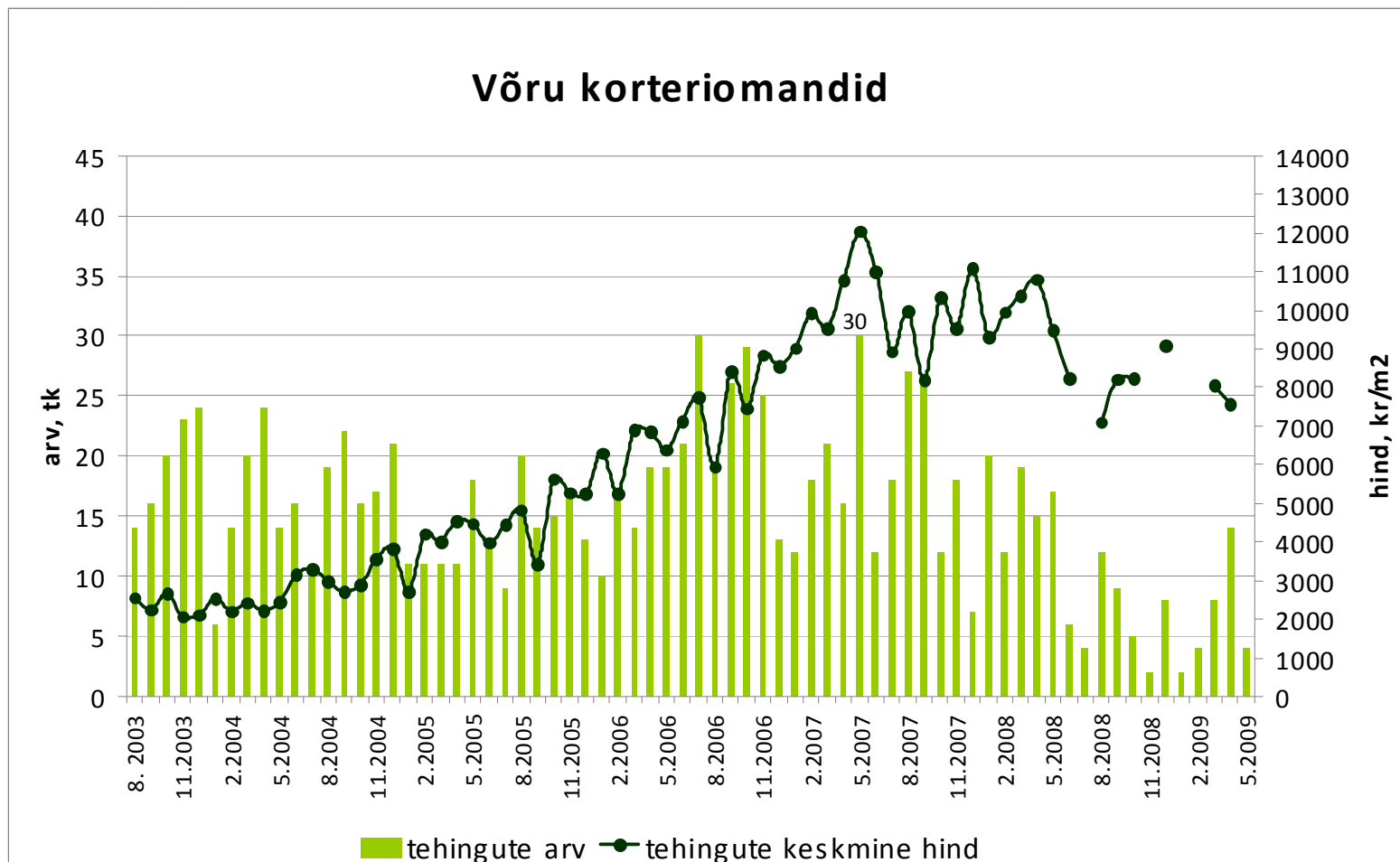
Allikas: Maa-amet

Tehingute arv on langenud 78%,  
tehinguhind 54%



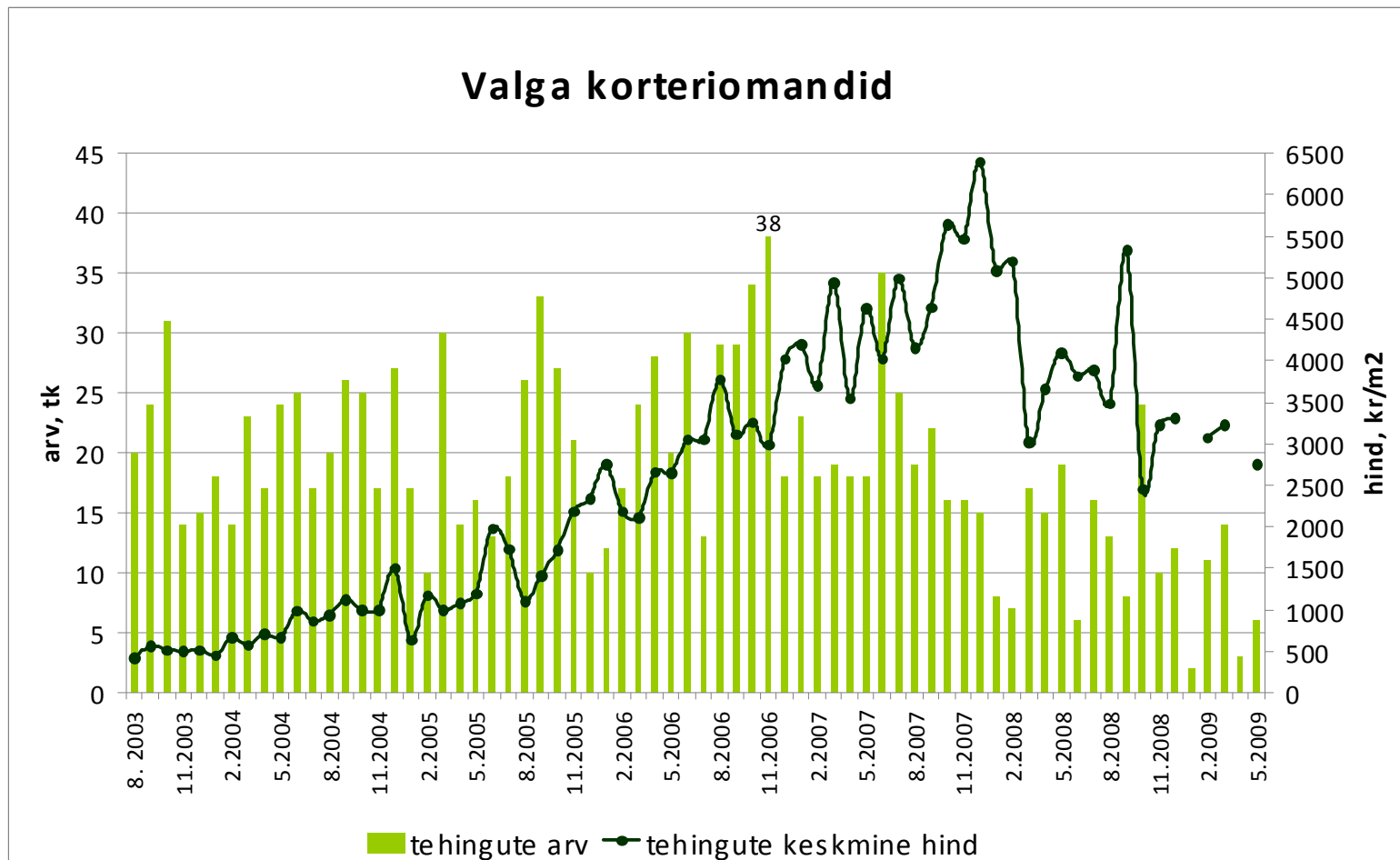
Allikas: Maa-amet

Tehingute arv on langenud 87%,  
tehinguhind 37%



Allikas: Maa-amet

Tehingute arv on langenud 84%,  
tehinguhind 57%



Allikas: Maa-amet