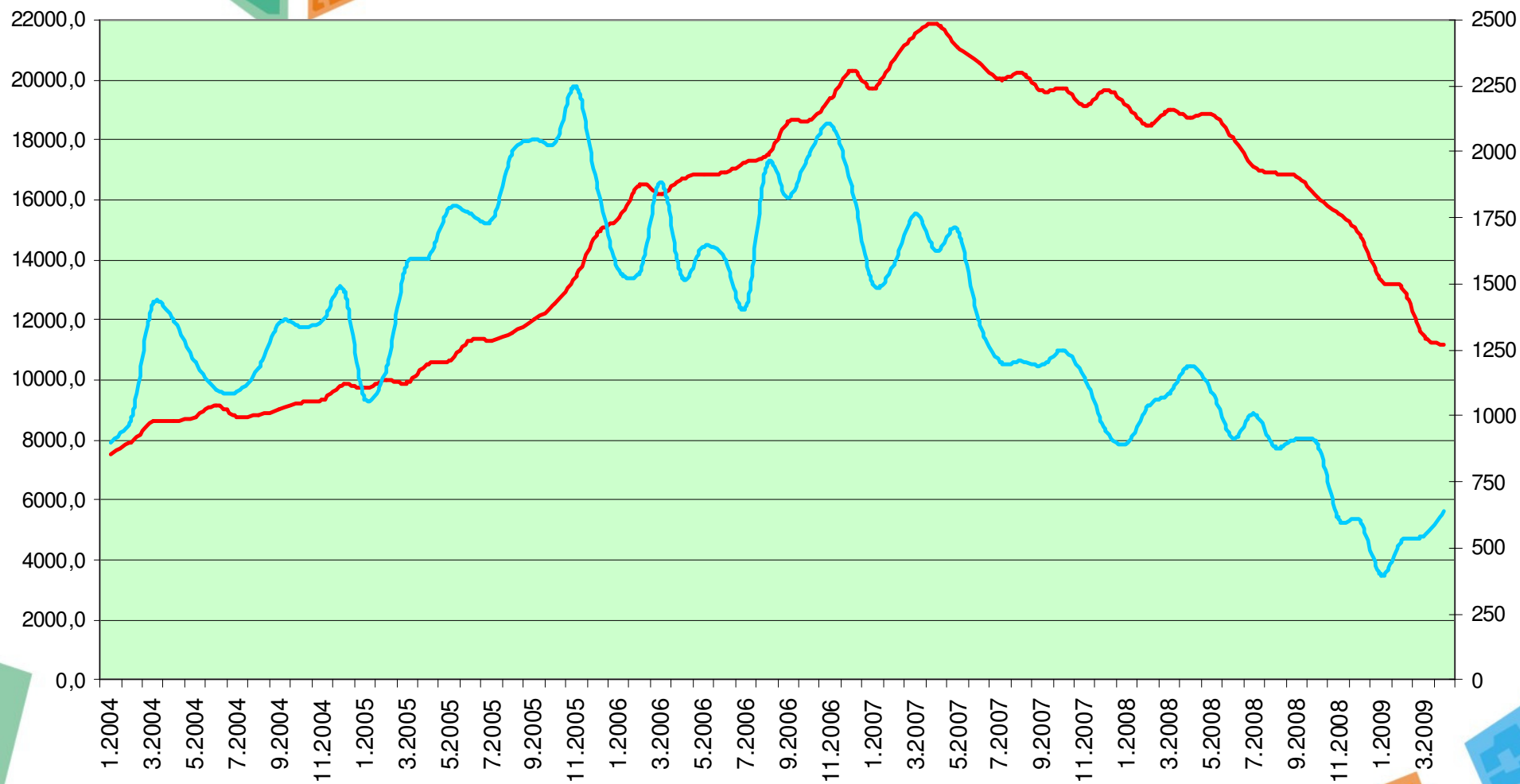




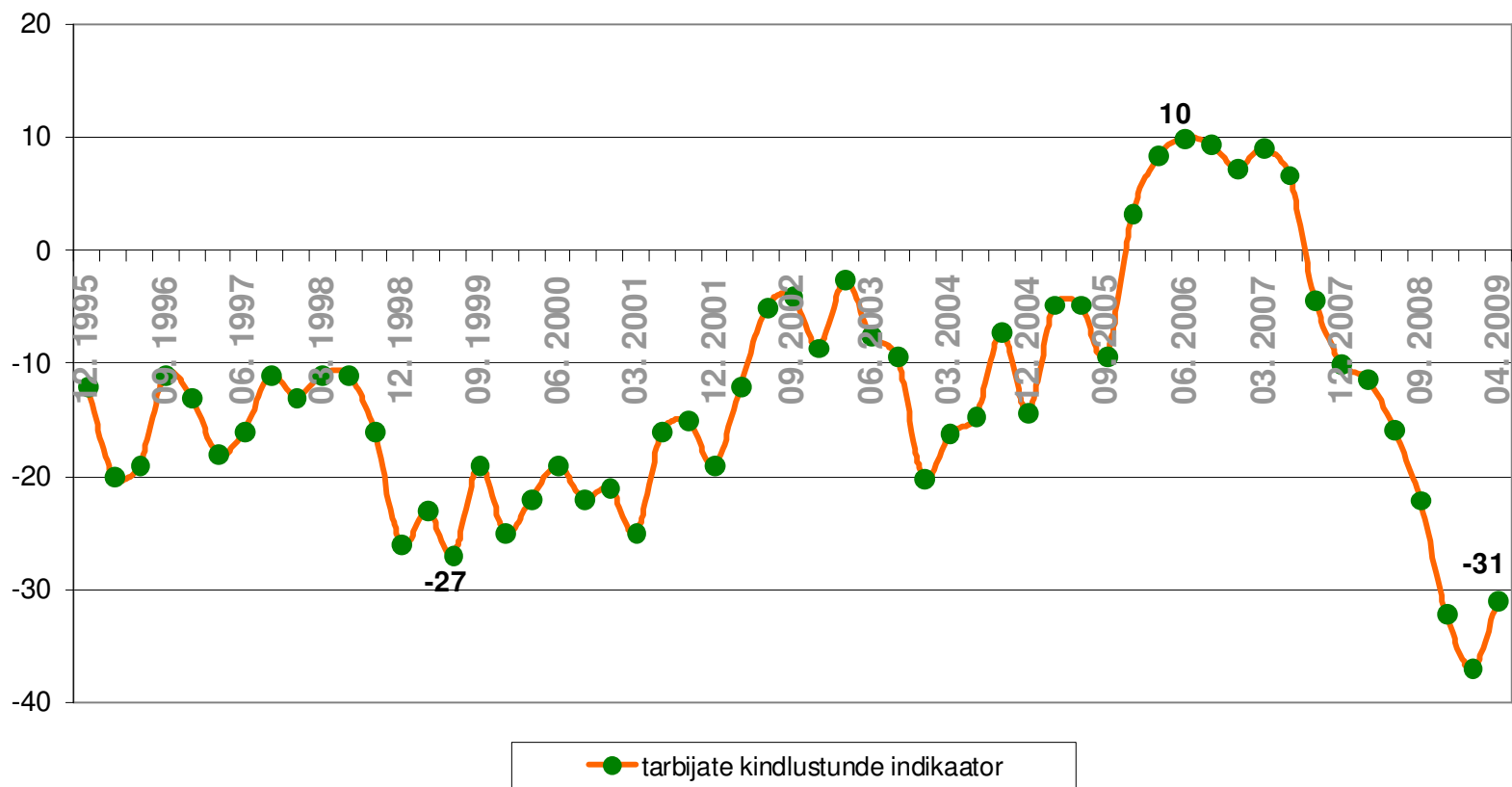
# **KINNISVARATURU AKTIIVSUS JA REGIONAALSED ERIPÄRAD**

## PINDI HINNAINDEKS

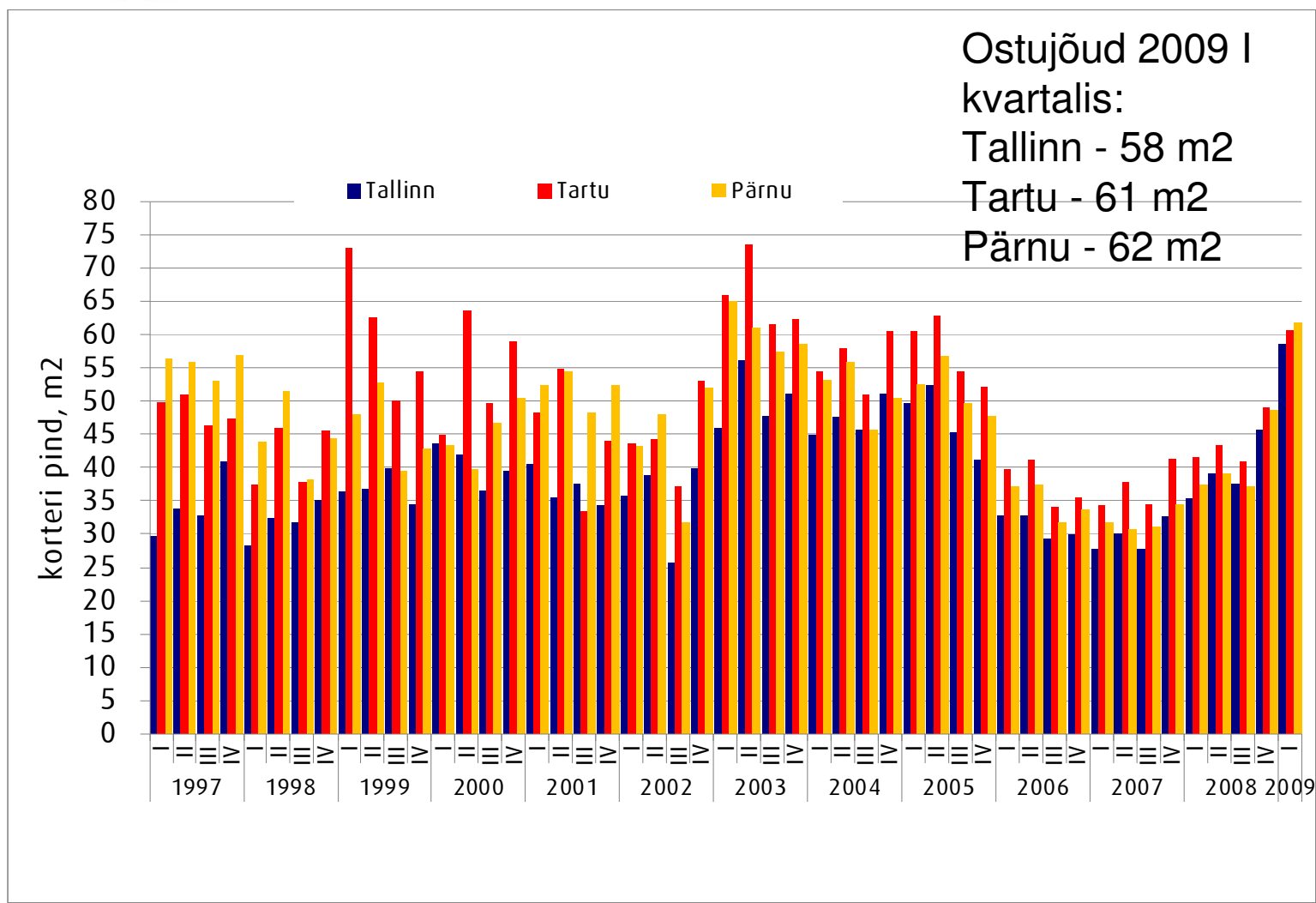


— Eesti 17 suurema linna korterite ruutmeetri kaalutud keskmine hind (allikad: Pindi Kinnisvara andmebaasid, Maa-amet, Statistikaamet)  
 — Eesti 17 suurema linna tehingute arv (allikas: Maa-amet)

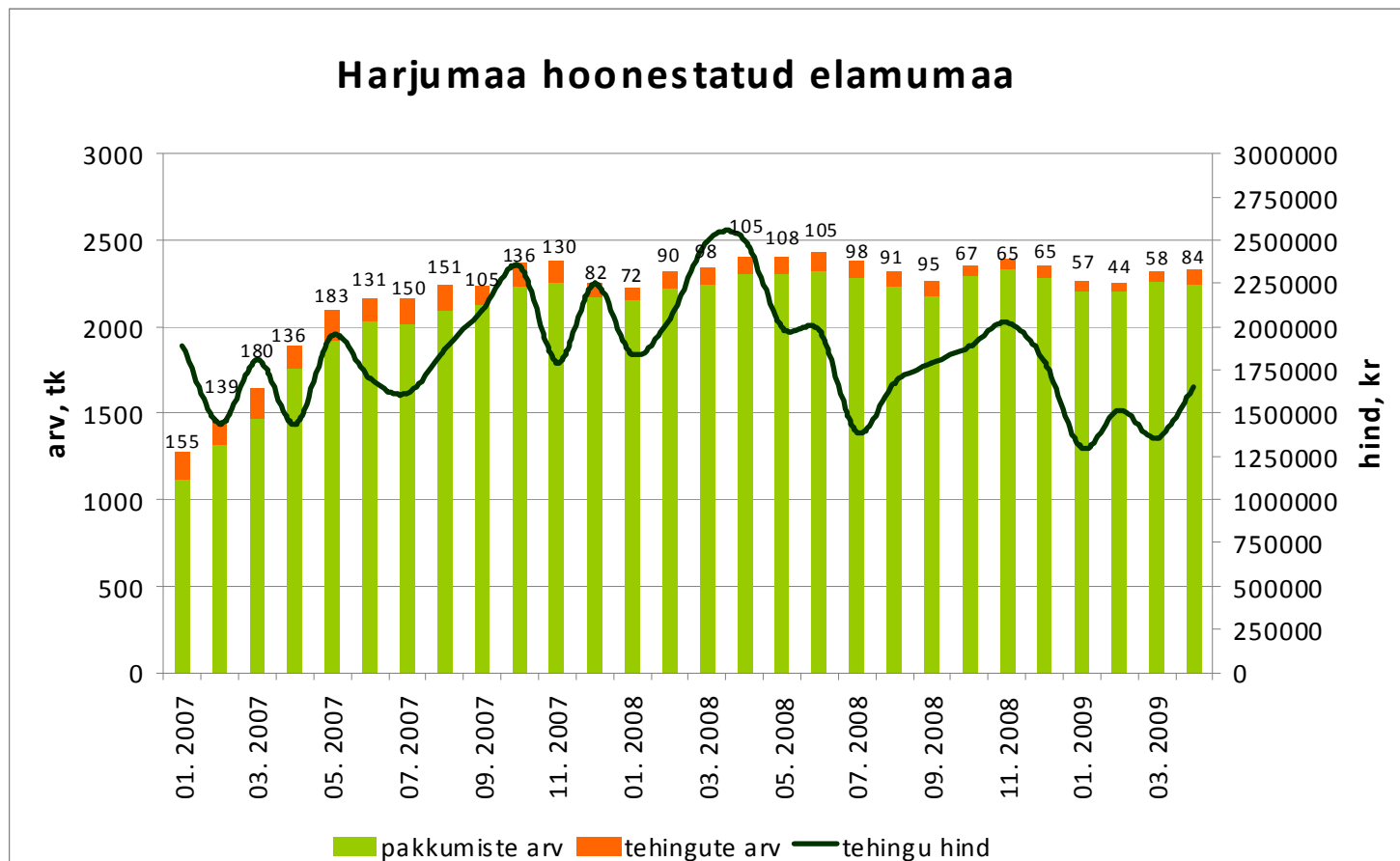
## Tarbijate kindlustunde indikaator



## Kinnisvara ostujõud keskmise palga baasil arvatatud laenuvõime järgi:

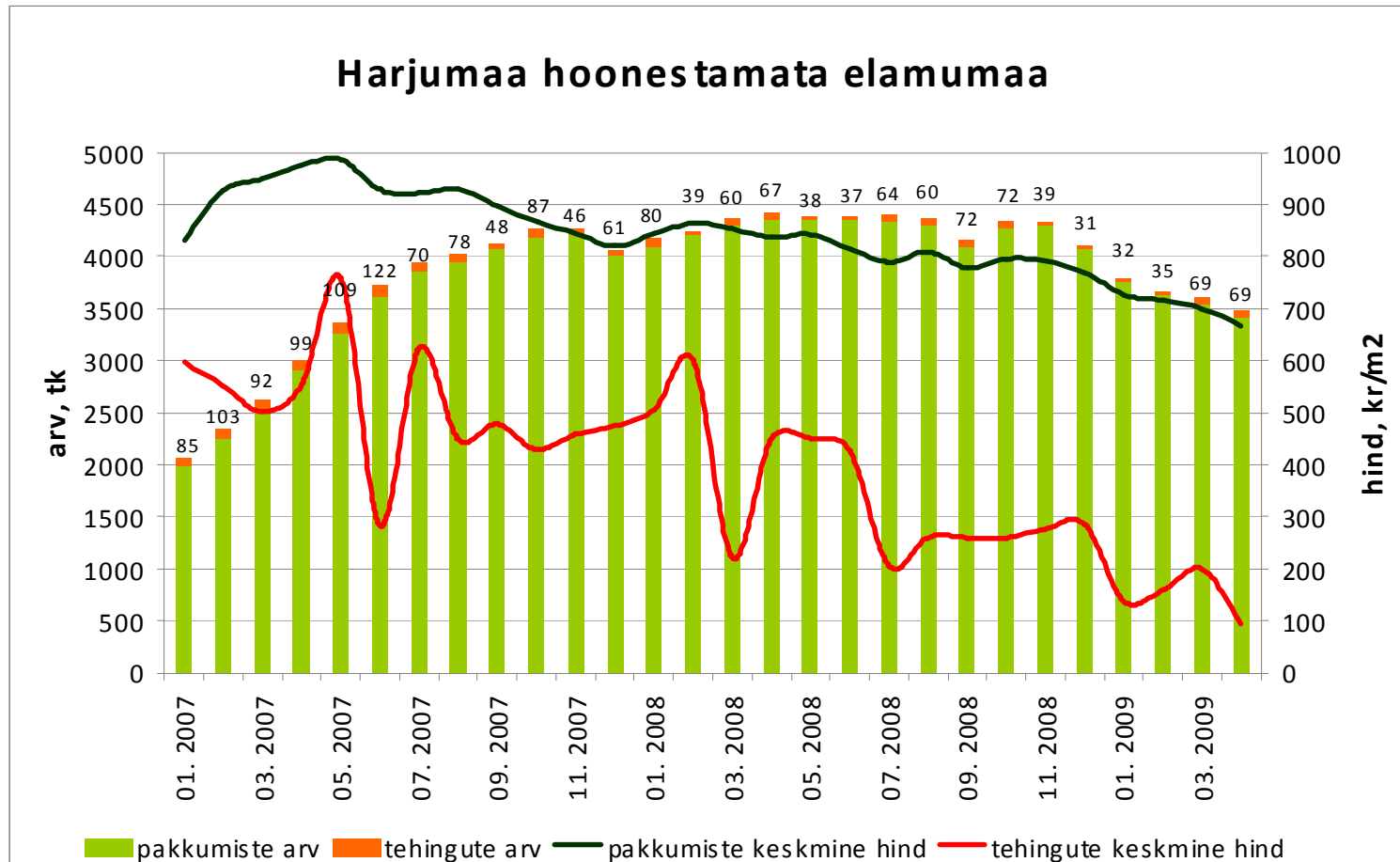


Tehingute arv on langenud 54%,  
tehinguhind 34%



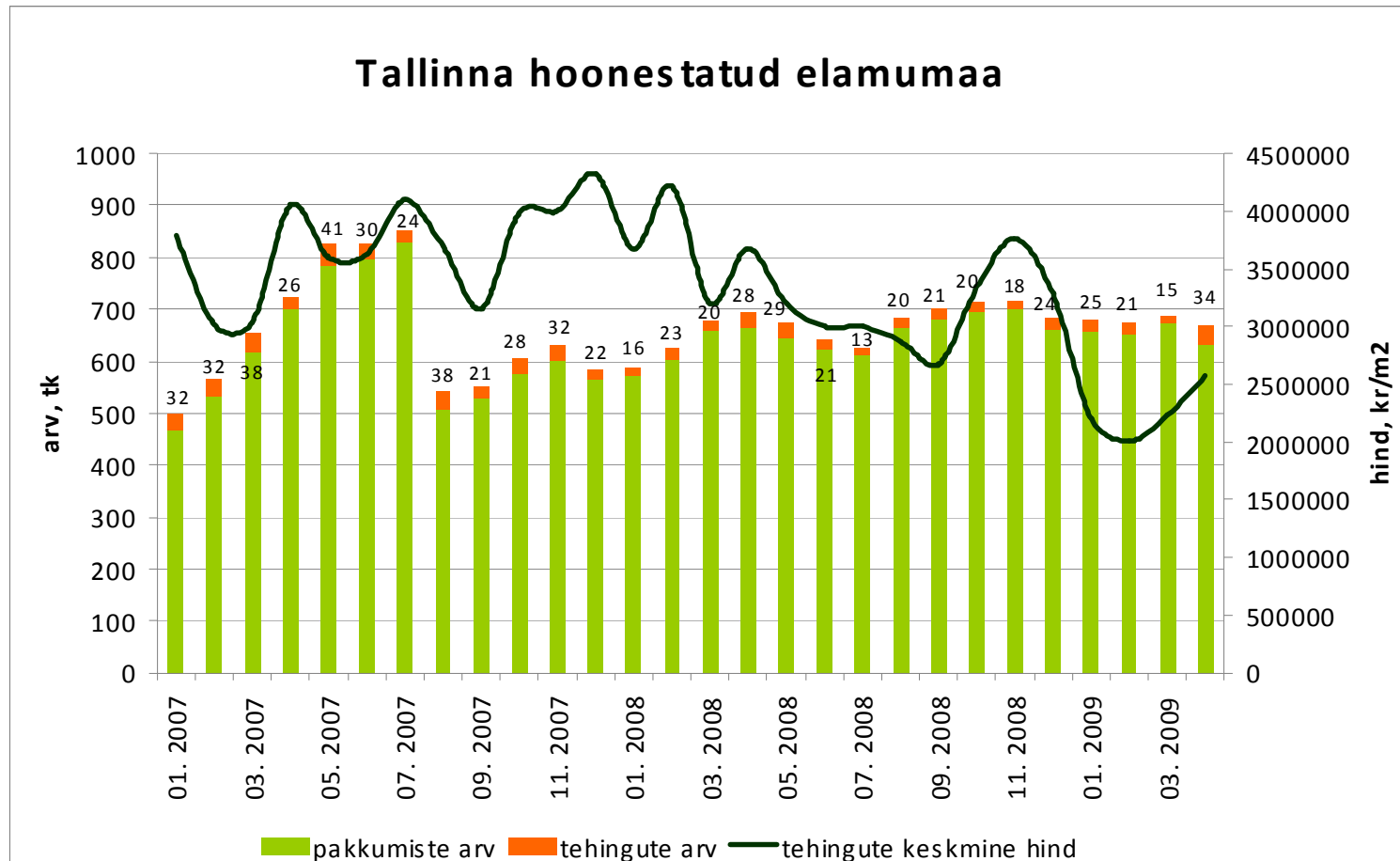
Allikad: Maa-amet, City24

Tehingute arv on langenud 43%,  
tehinguhind 87%



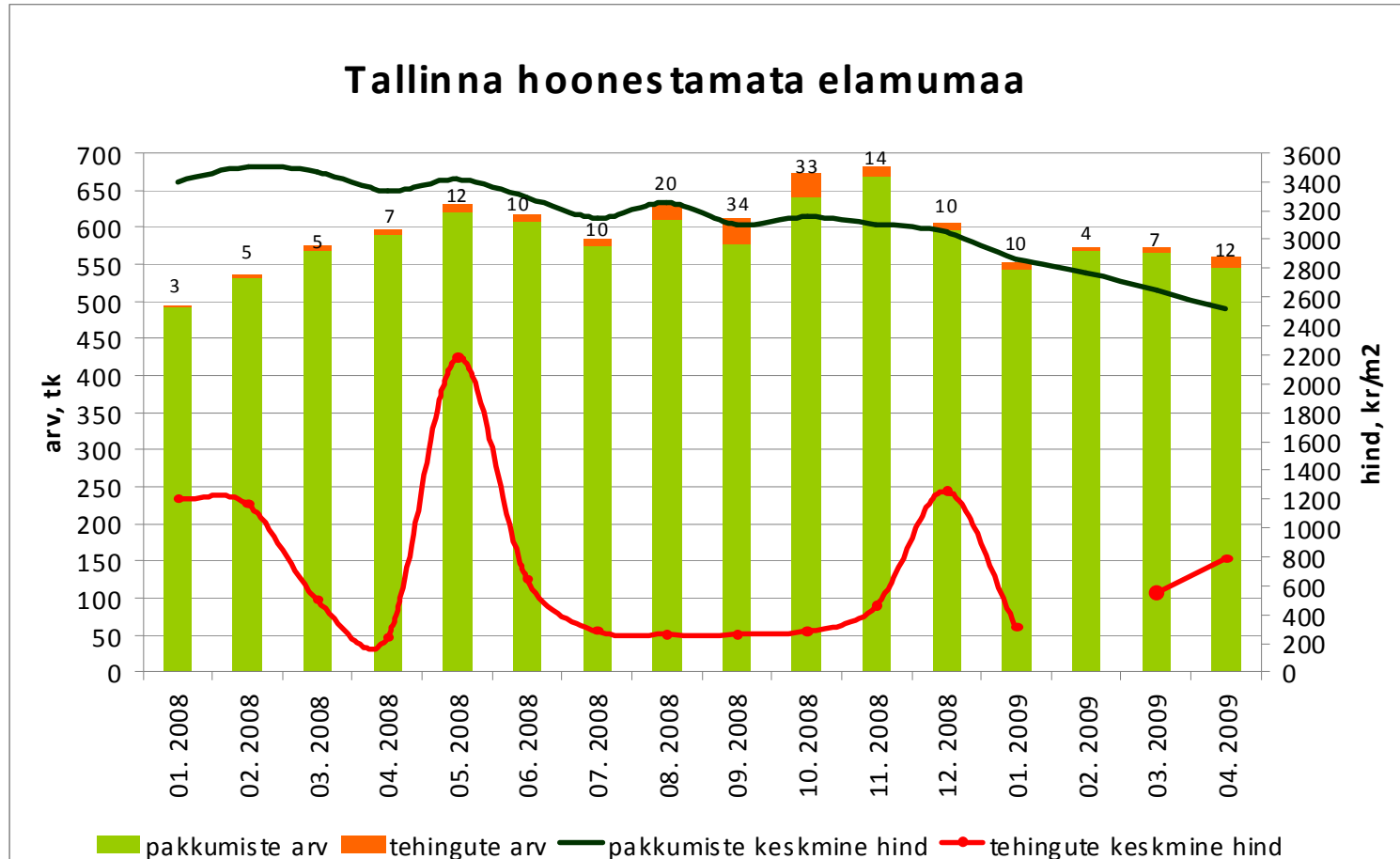
Allikas: Maa-amet

Tehingute arv on 2006.a. märtsist  
langenud 54%, tehinguhind  
2007.a. dets-st 40%



Allikad: Maa-amet, City24

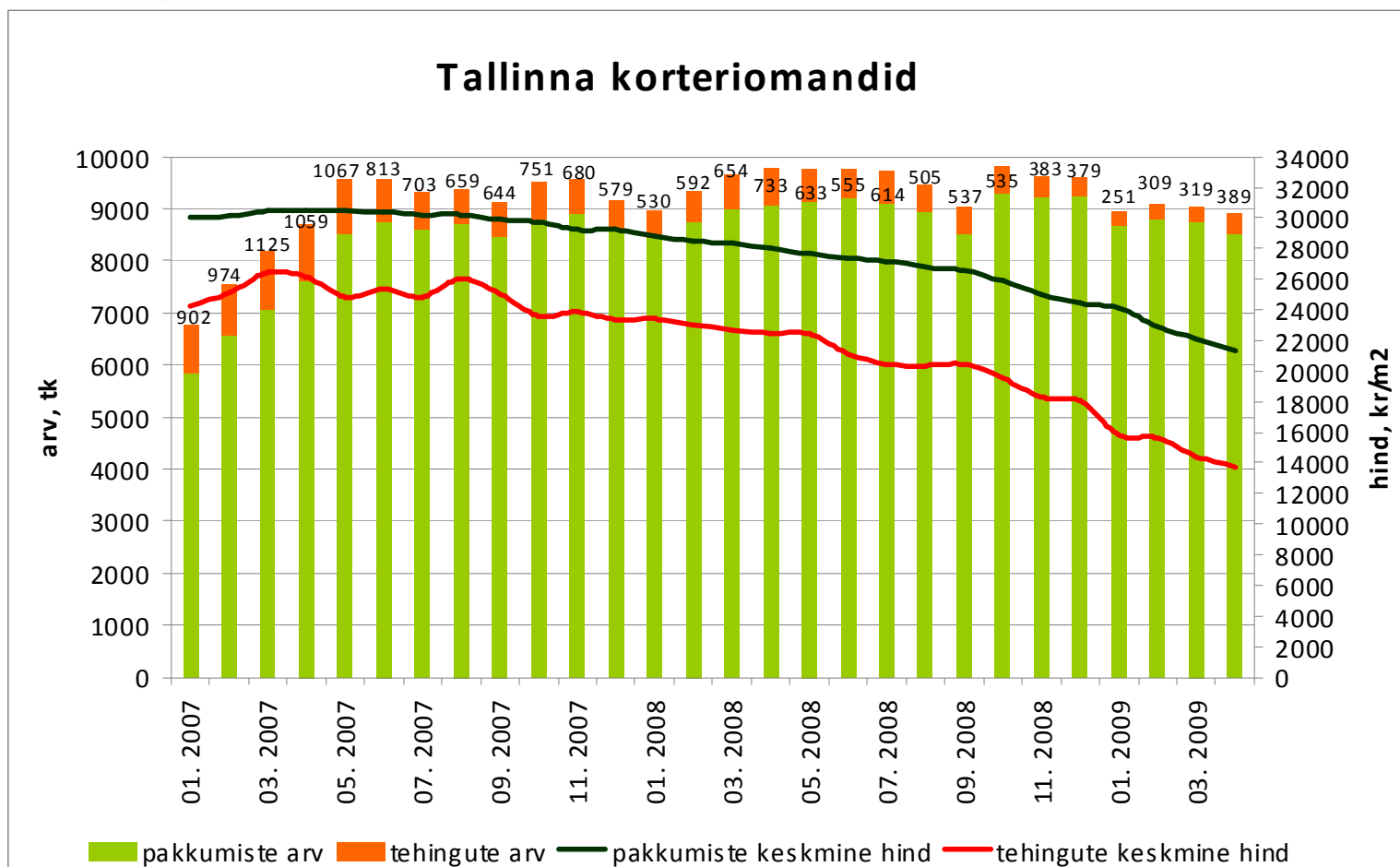
Tehingute arv on 2006.a. maist langenu-  
nud 56%, tehinguhind 2007.a.  
juunist 71%



Allikad: Maa-amet, City24



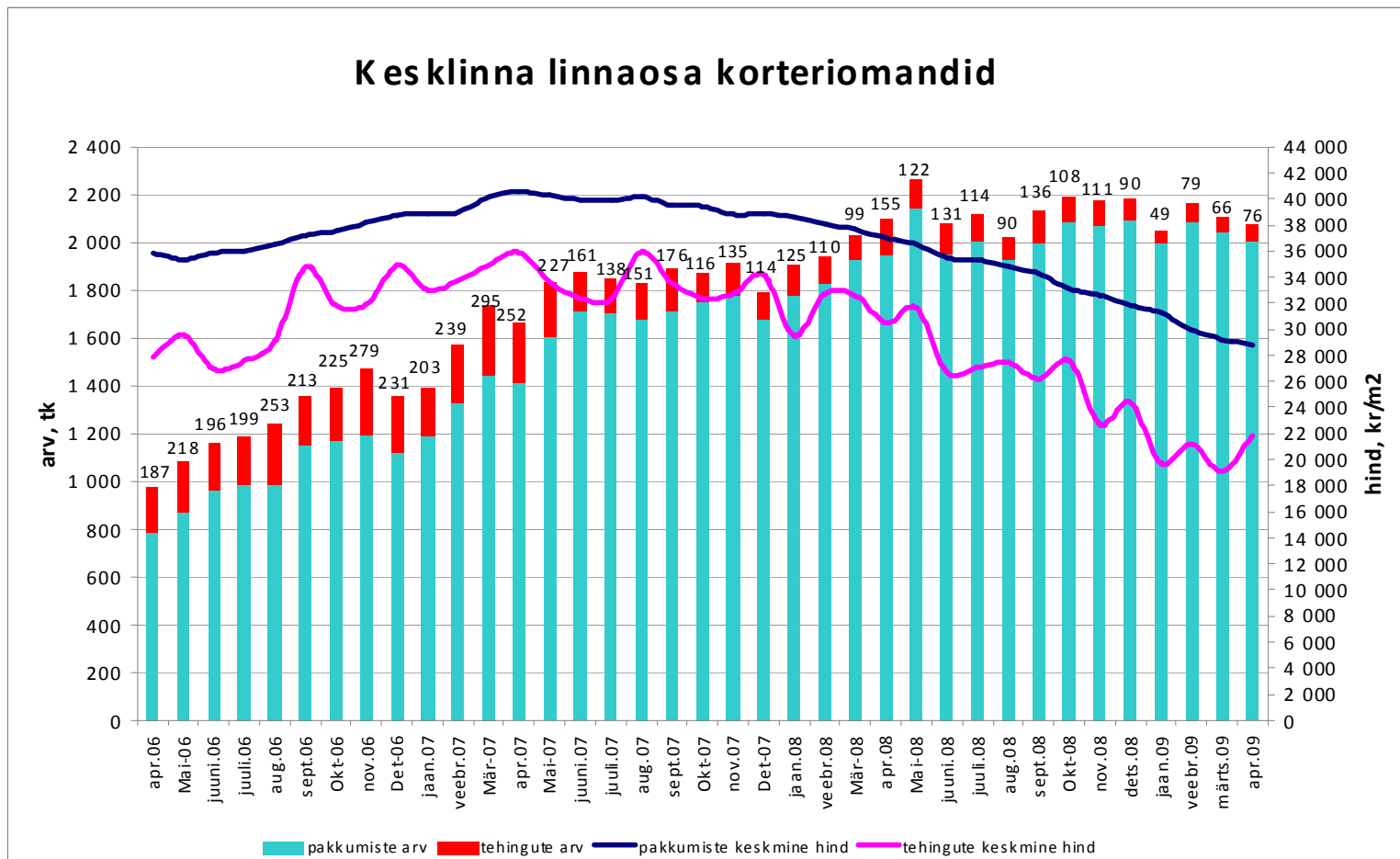
Tehingute arv on langenud 65%,  
tehinguhind 48%



Allikad: Maa-amet, City24

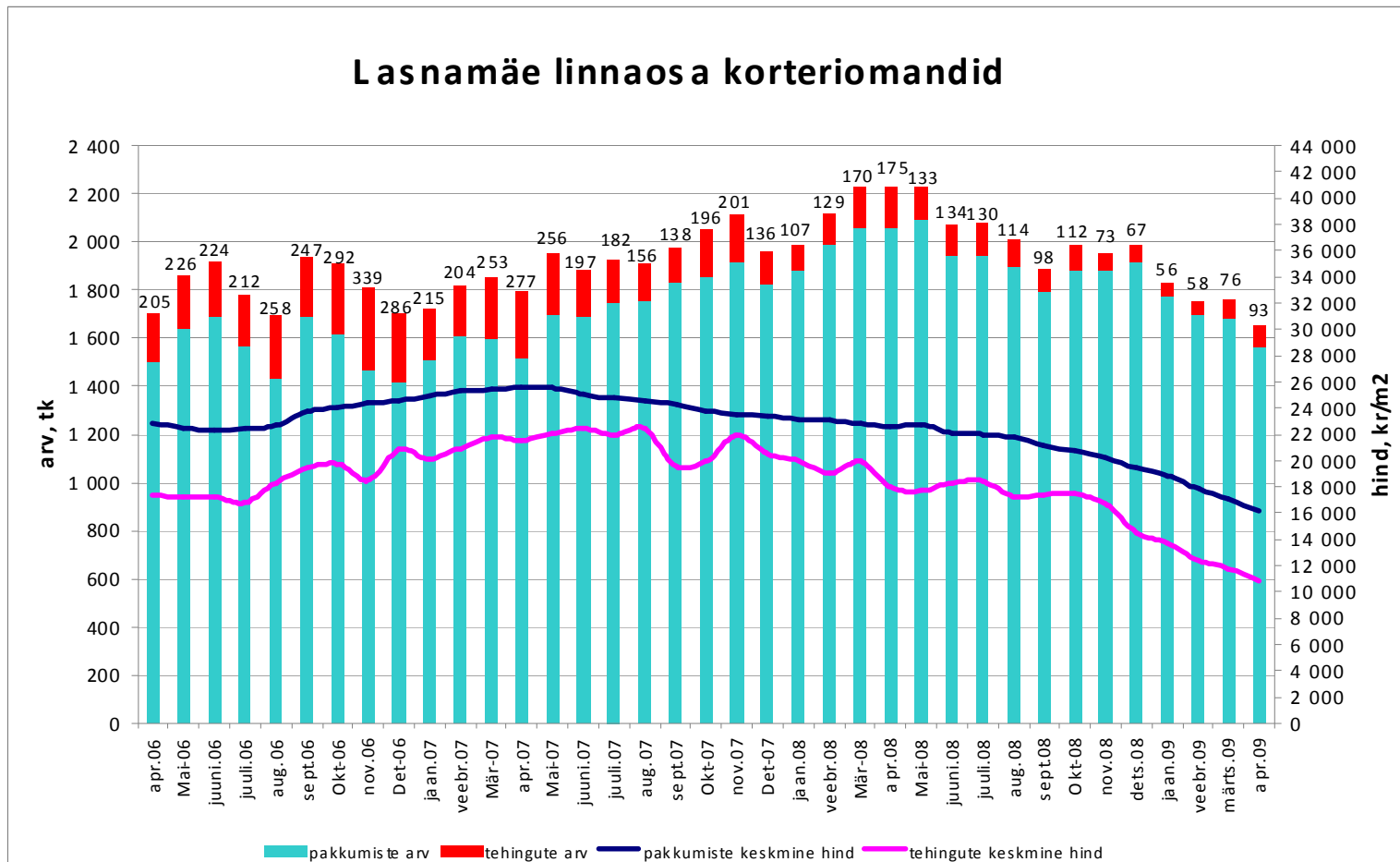
Tehingute arv on langenud 74%,  
tehinguhind 39%

### Kes klinna linnaosa korteriomandid



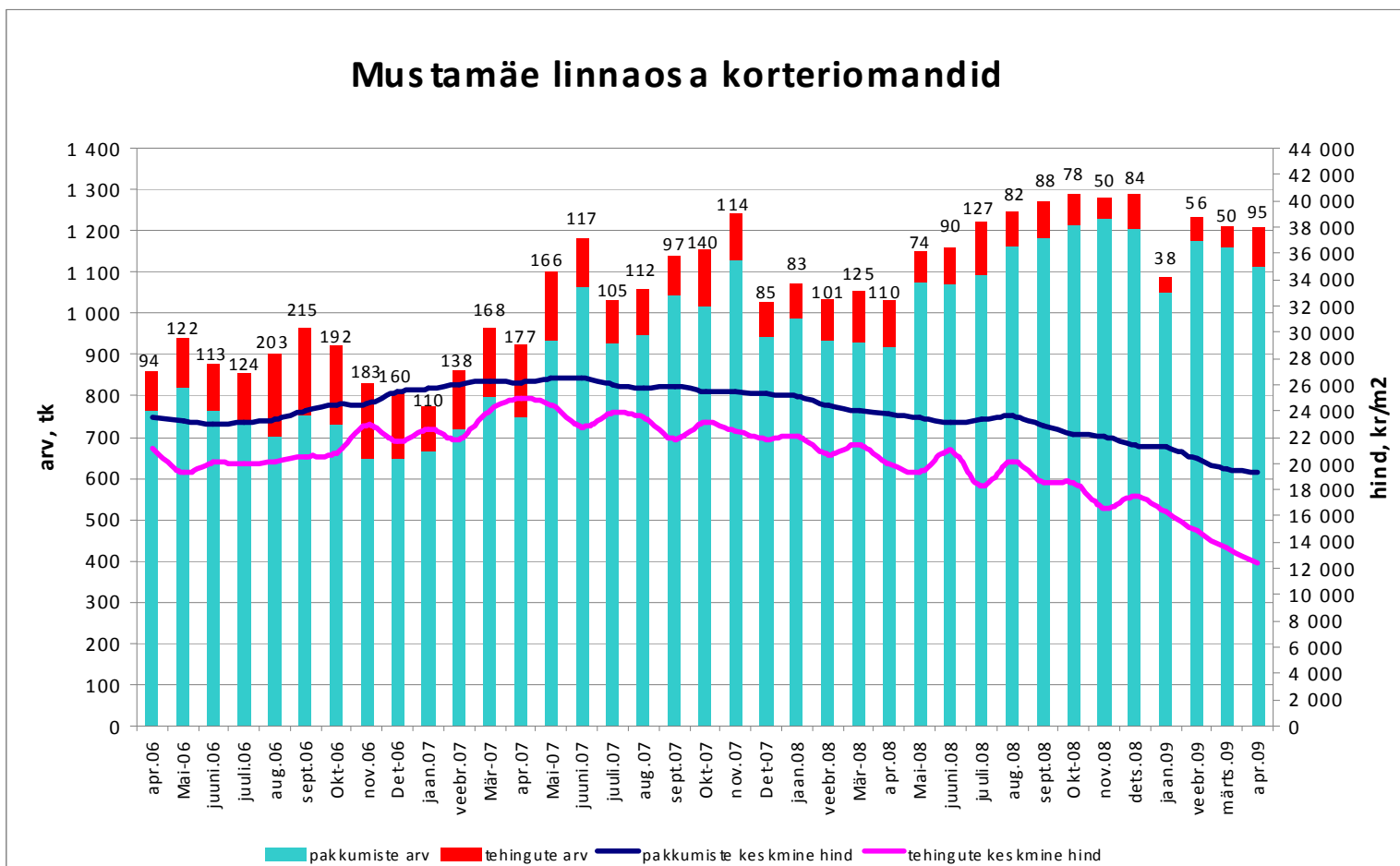
Allikad: Maa-amet, City24

Tehingute arv on langenud 73%,  
tehinguhind 52%



Allikad: Maa-amet, City24

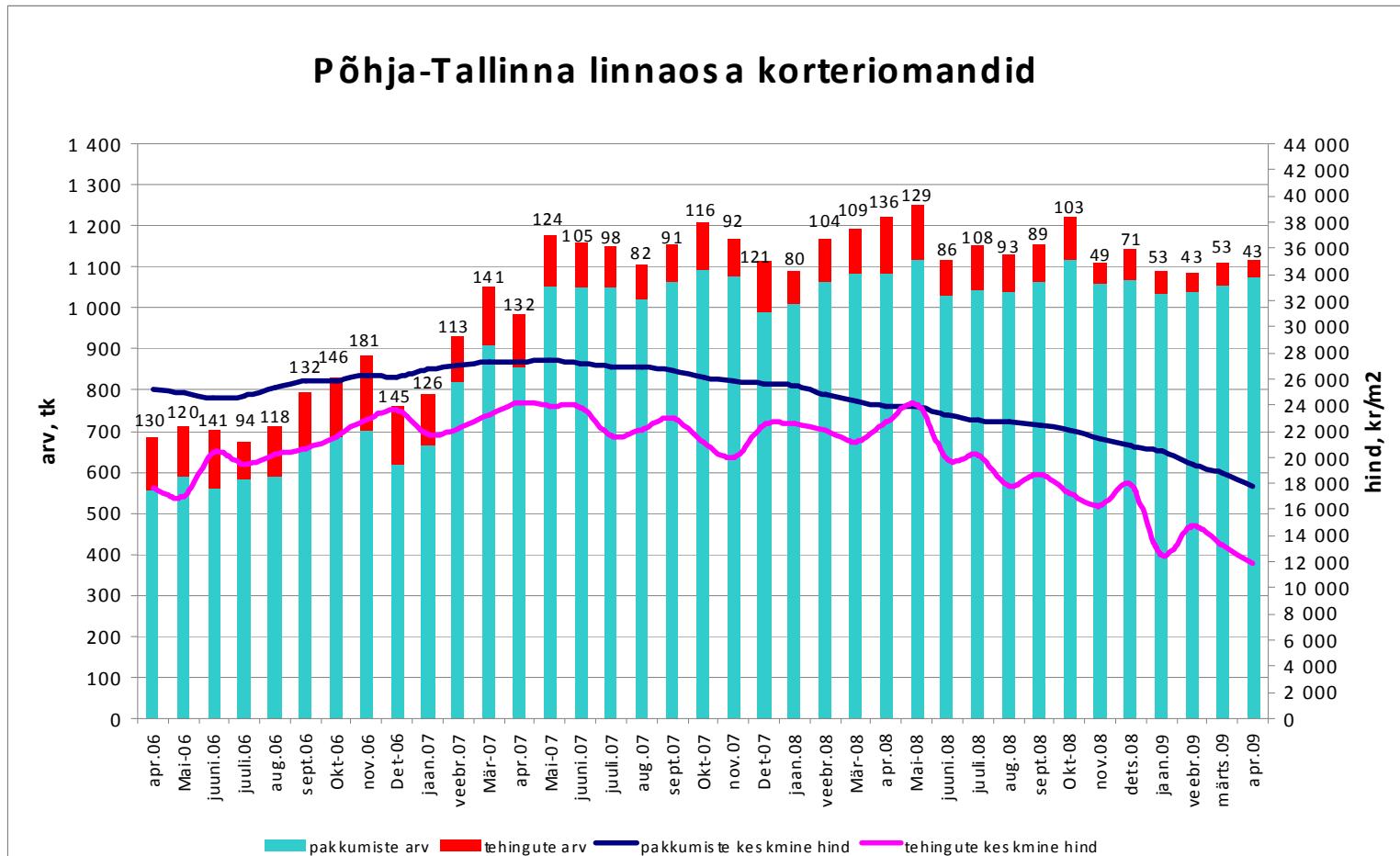
Tehingute arv on langenud 56%,  
tehinguhind 50%



Allikad: Maa-amet, City24

Tehingute arv on langenud 76%,  
tehinguhind 51%

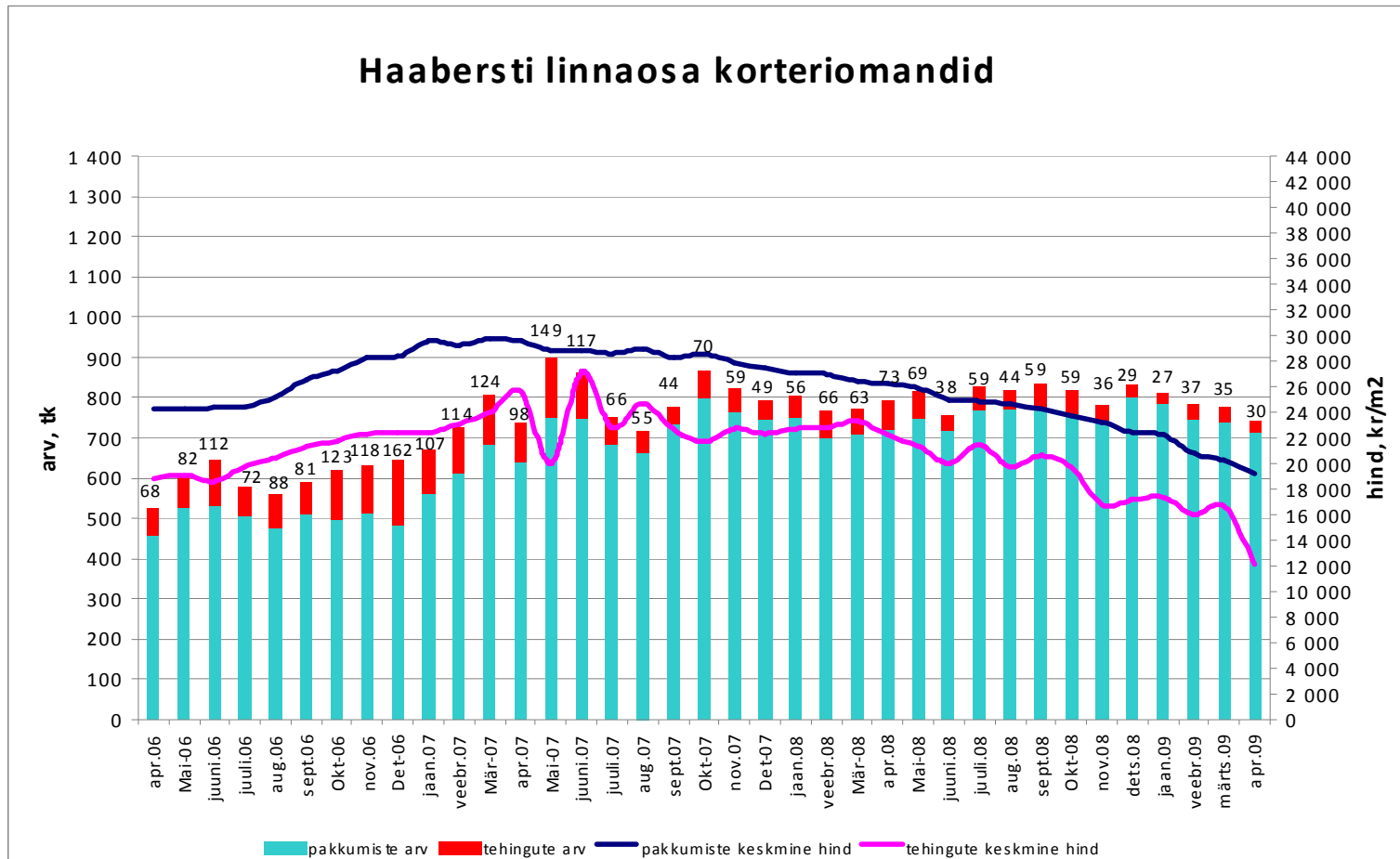
### Põhja-Tallinna linnaosa korteriomandid



Allikad: Maa-amet, City24

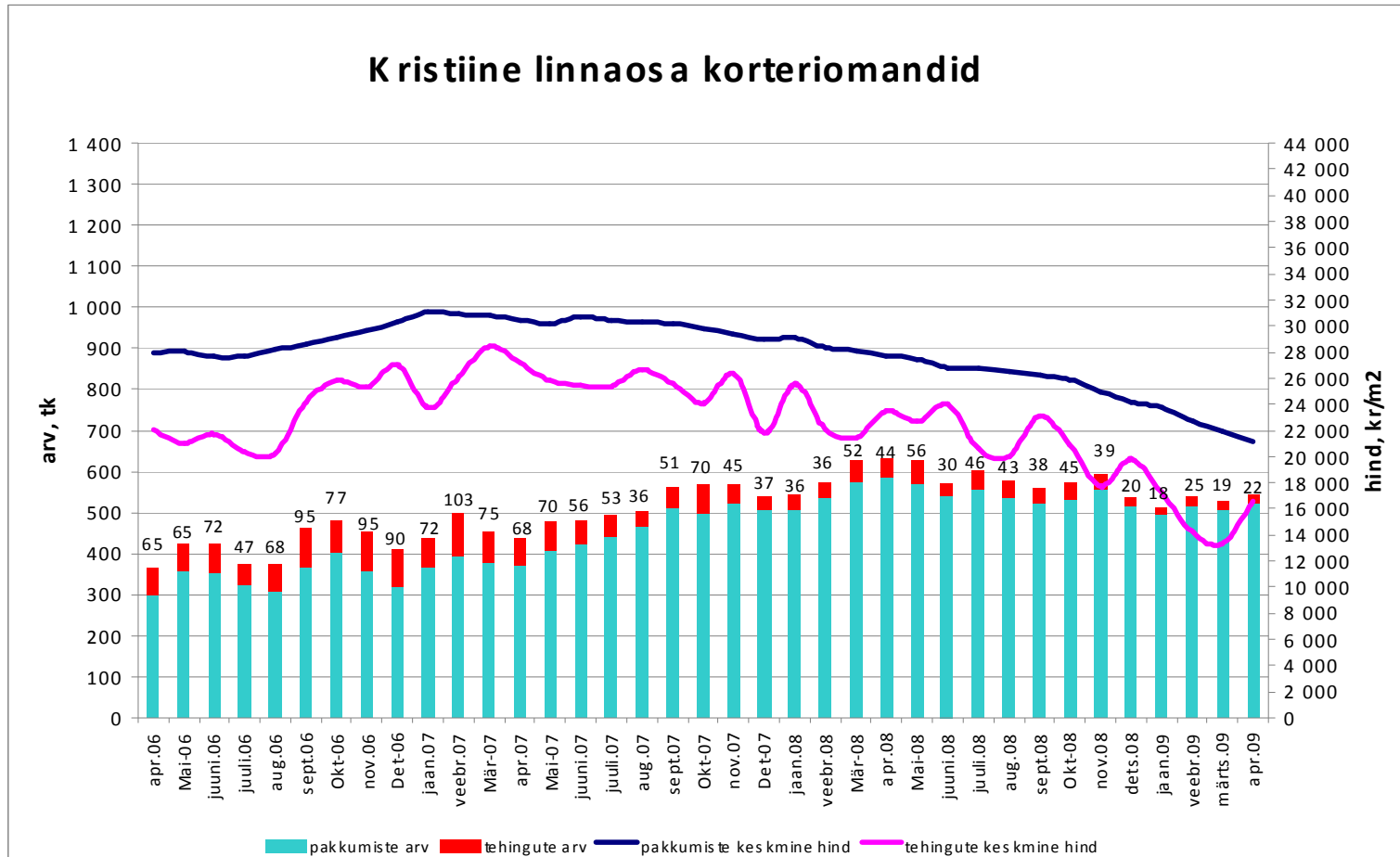
Tehingute arv on langenud 81%,  
tehinguhind 55%

### Haabersti linnaosa korteriomandid



Allikad: Maa-amet, City24

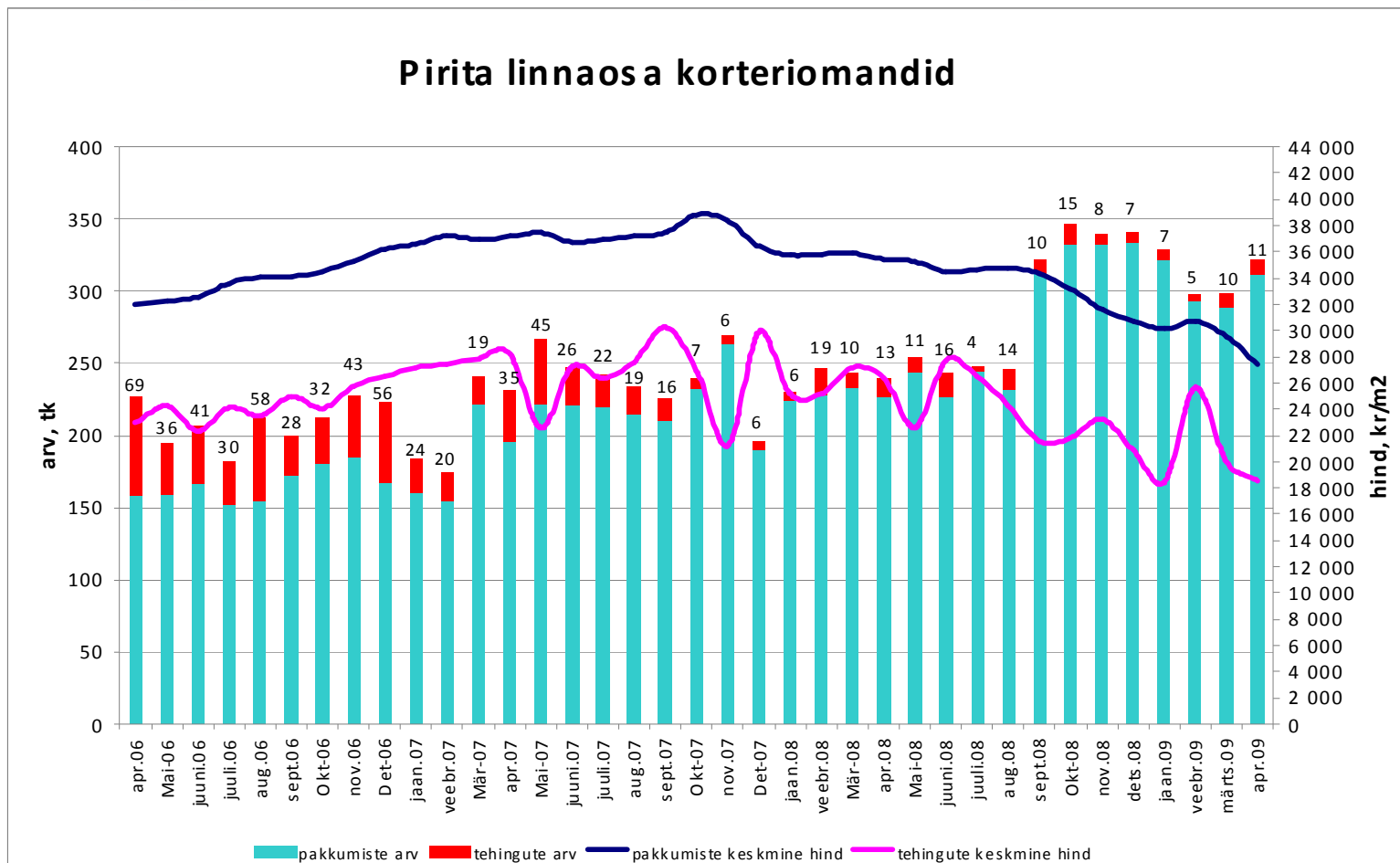
Tehingute arv on langenud 79%,  
tehinguhind 42%



Allikad: Maa-amet, City24

Tehingute arv on langenud 84%,  
tehinguhind 39%

### Pirita linnaosa korteriomandid

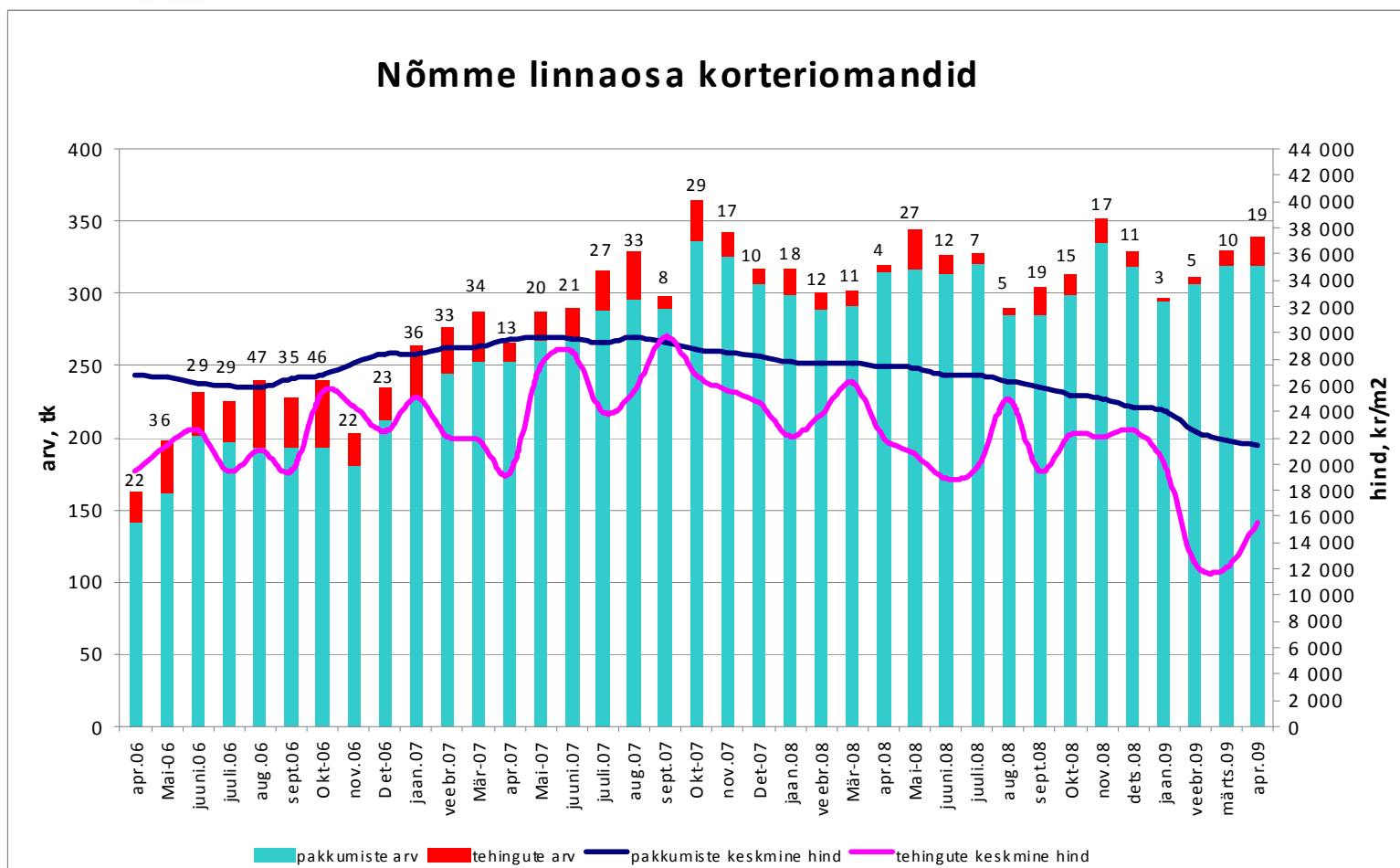


Allikad: Maa-amet, City24



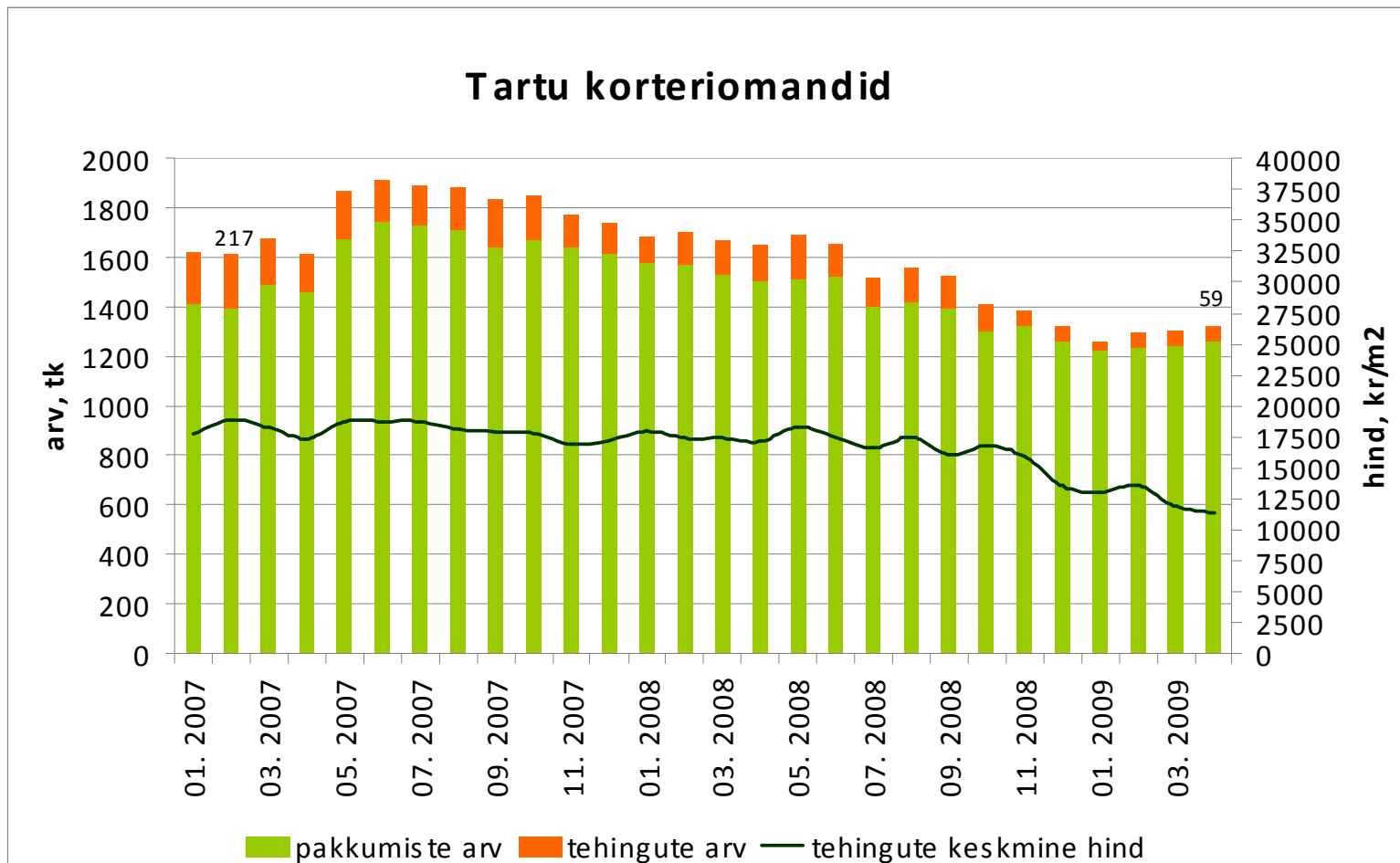
Tehingute arv on langenud 60%,  
tehinguhind 48%

### Nõmme linnaosa korteriomandid



Allikad: Maa-amet, City24

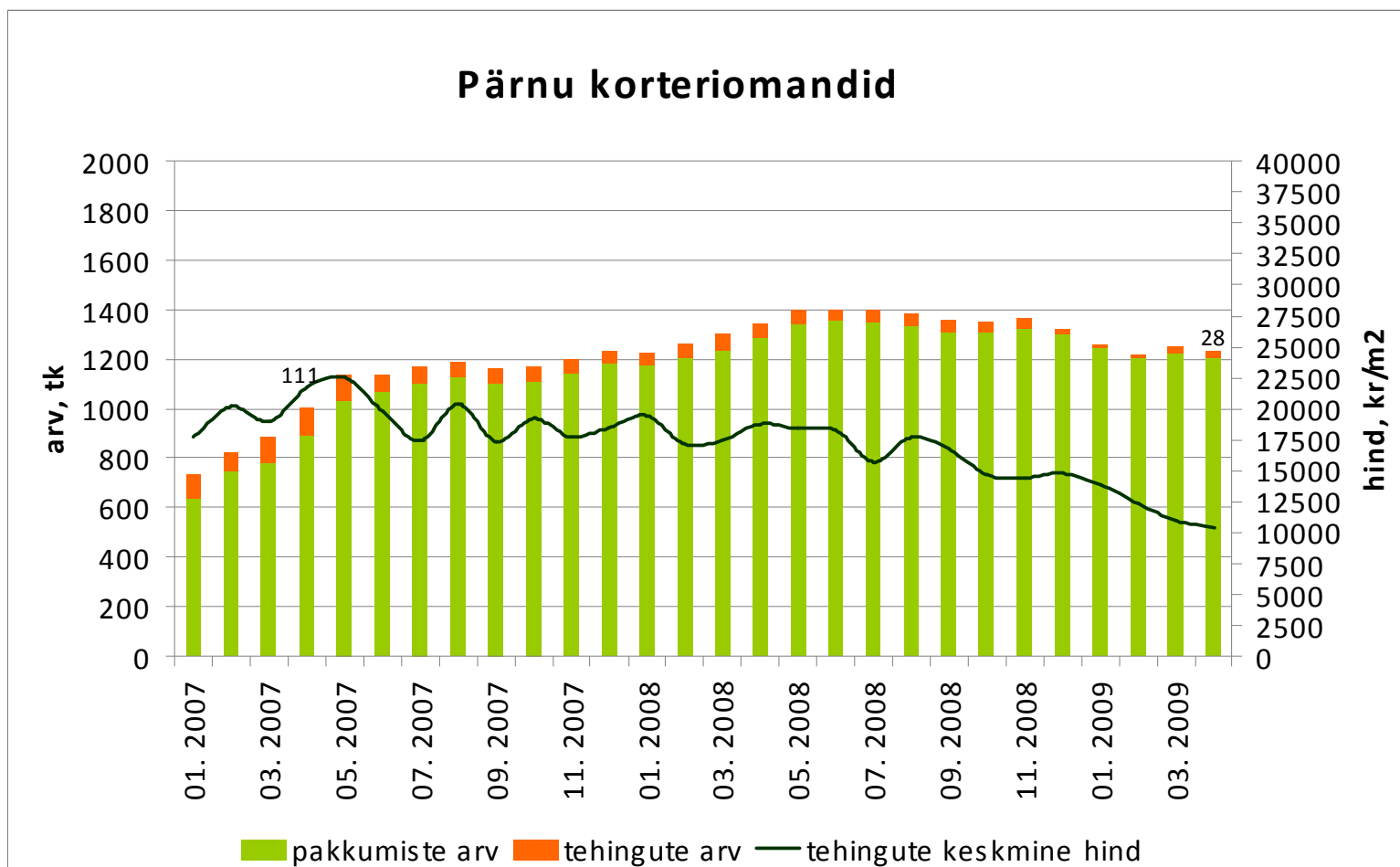
Tehingute arv on langenud 73%,  
tehinguhind 40%



Allikad: Maa-amet, City24

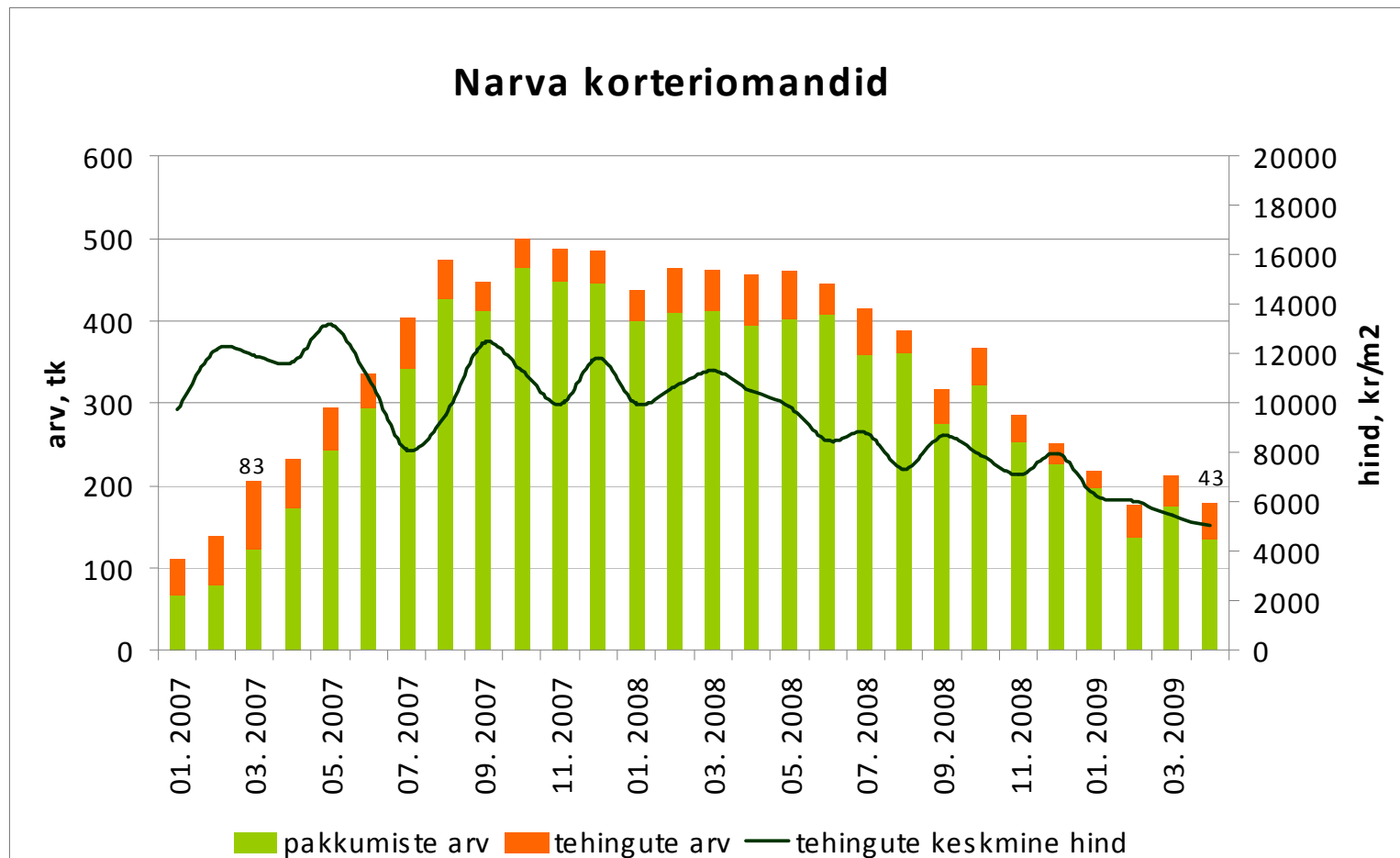


Tehingute arv on langenud 75%,  
tehinguhind 54%



Allikad: Maa-amet, City24

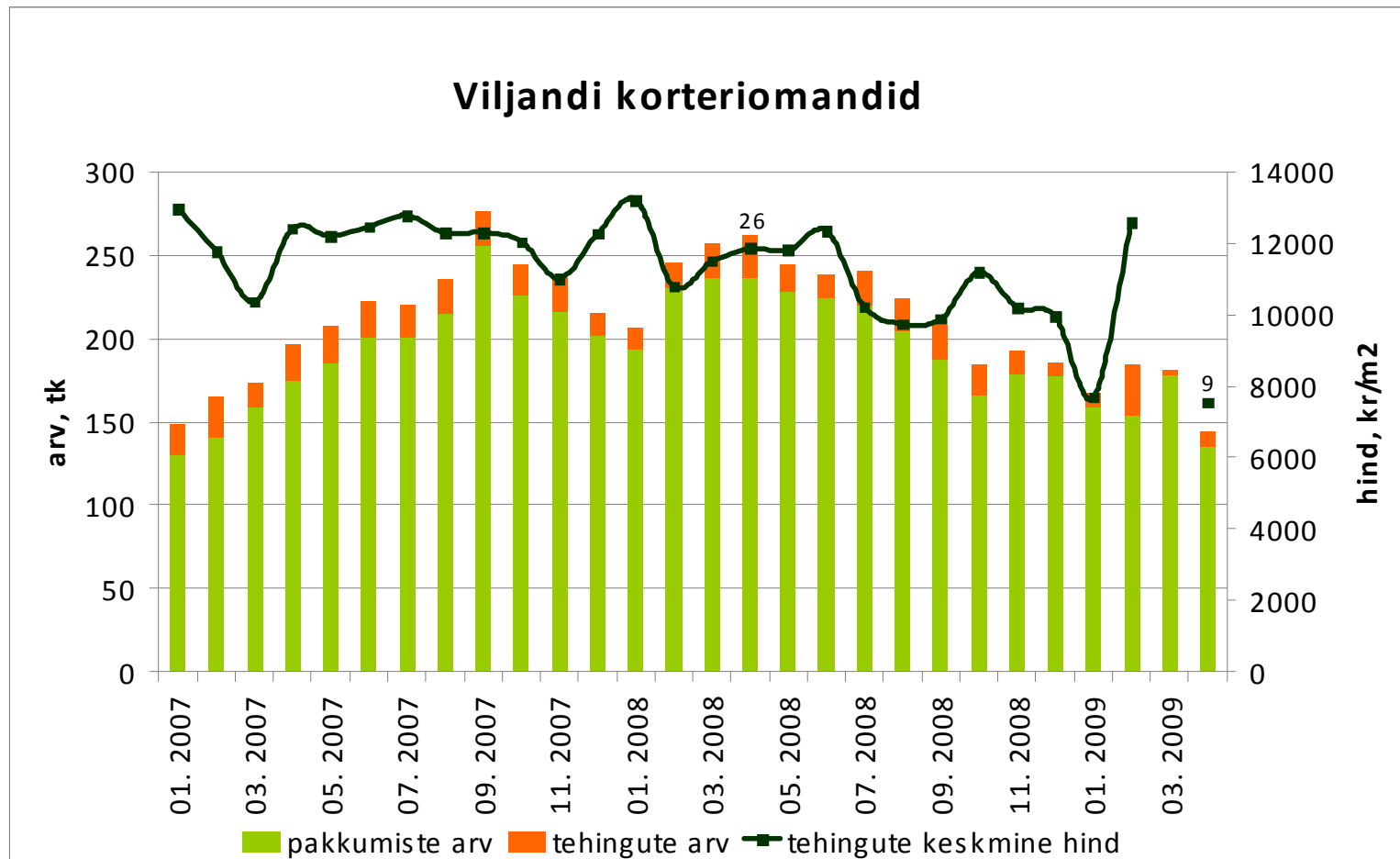
Tehingute arv on langenud 48%,  
tehinguhind 62%



Allikad: Maa-amet, City24

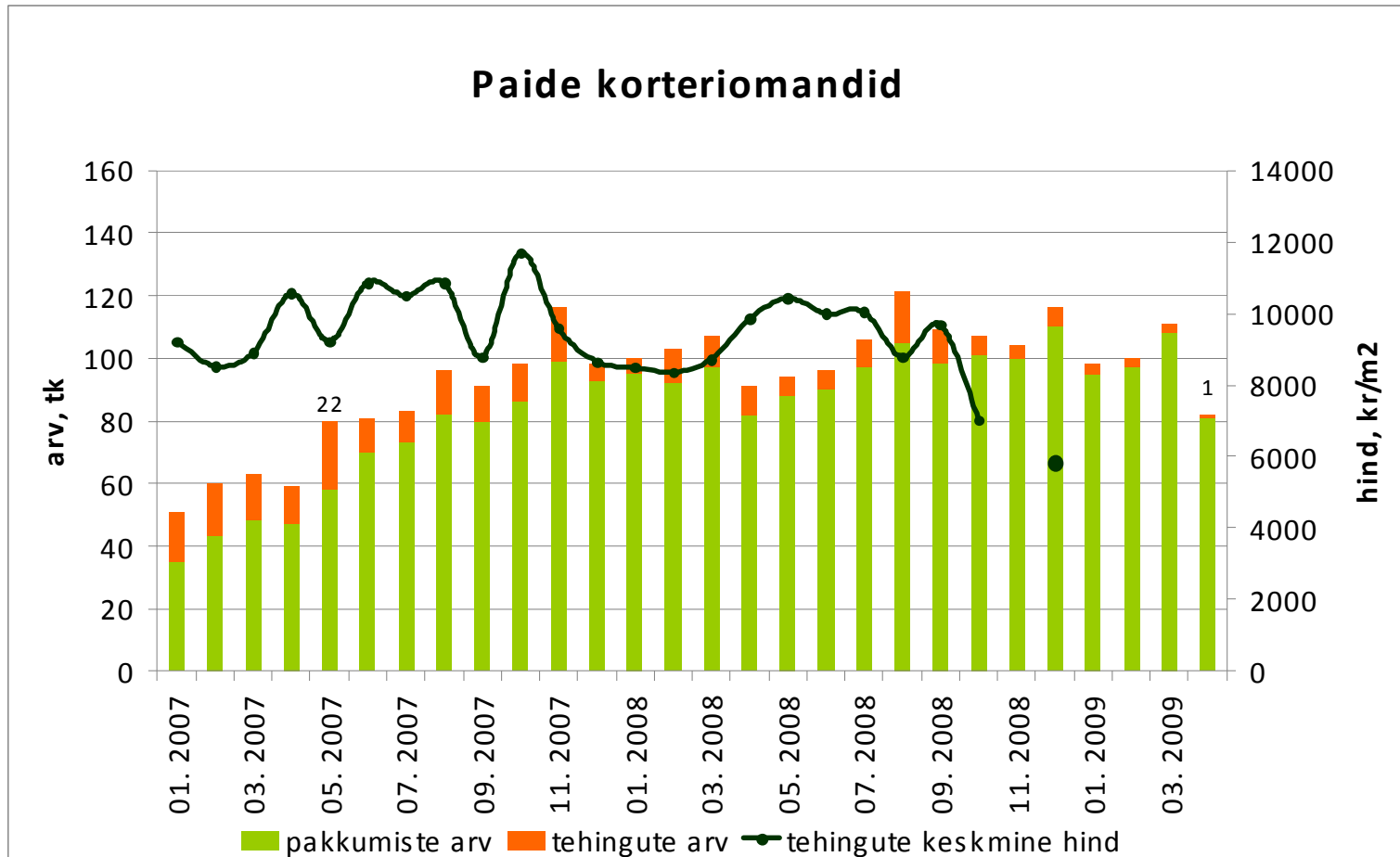


Tehingute arv on langenud 65%,  
tehinguhind 43%.



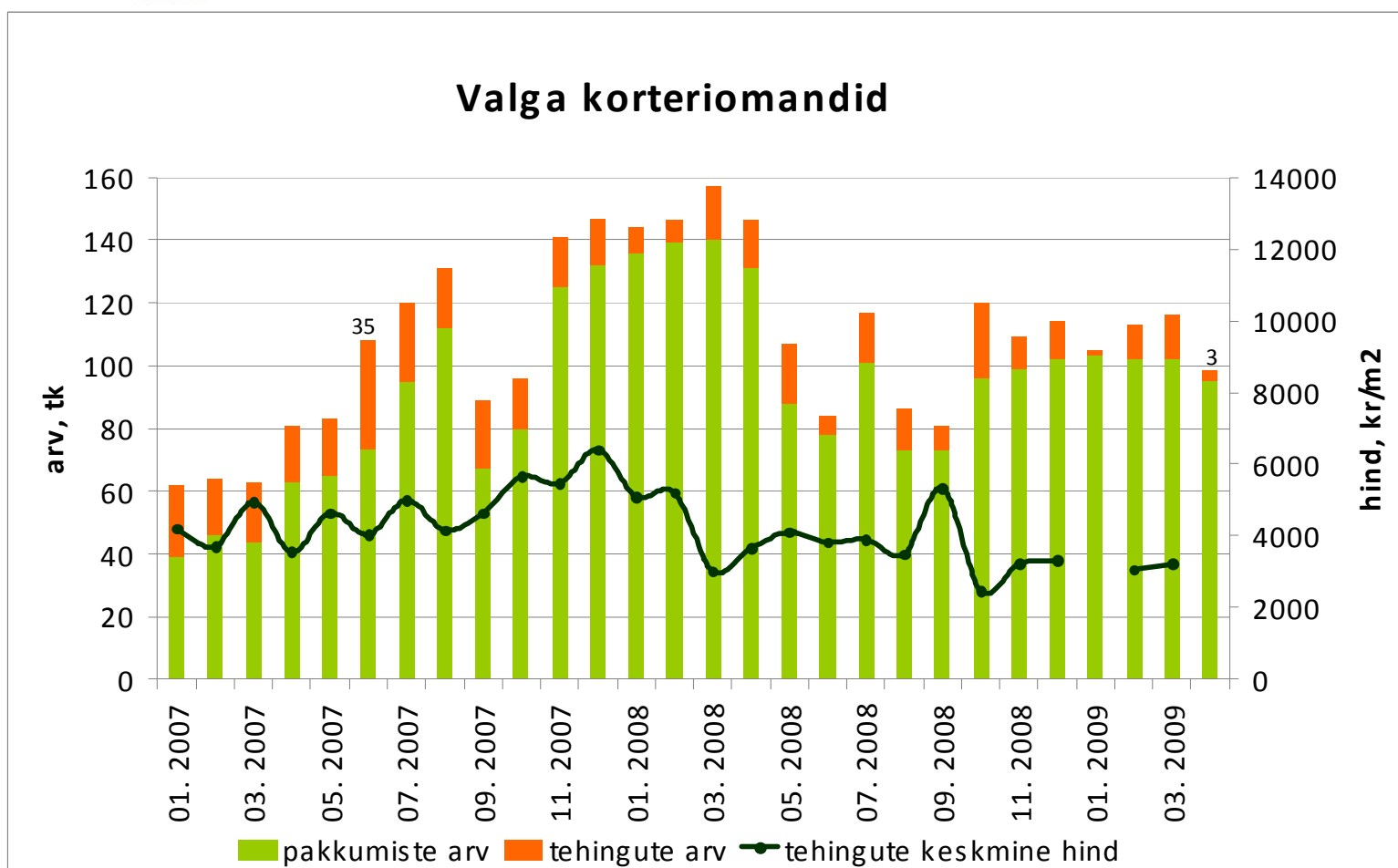
Allikad: Maa-amet, City24

Tehingute arv on langenud 95%,  
tehinguhind ca 50%



Allikad: Maa-amet, City24

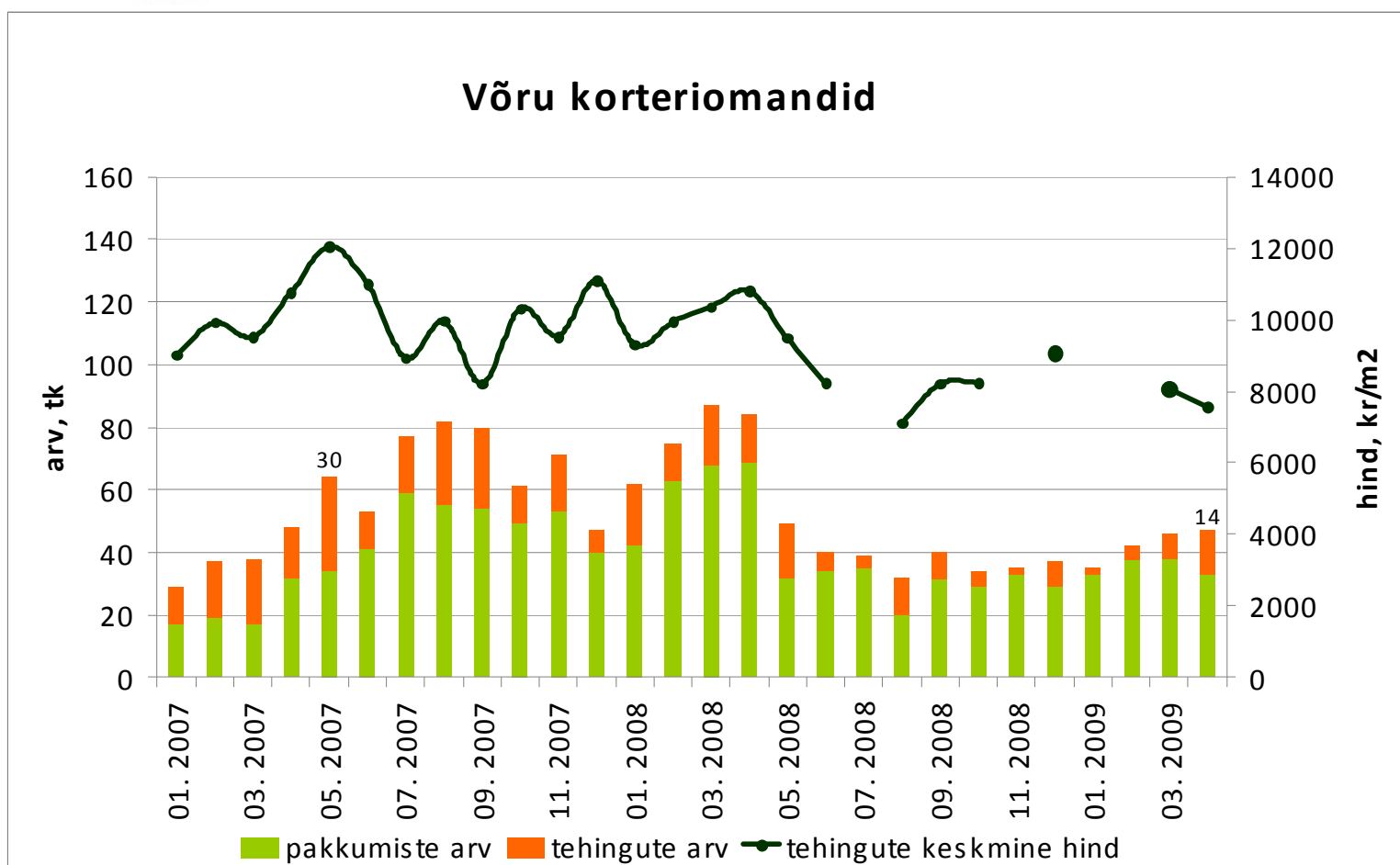
Tehingute arv on langenud 91%  
tehinguhind 50%



Allikad: Maa-amet, City24

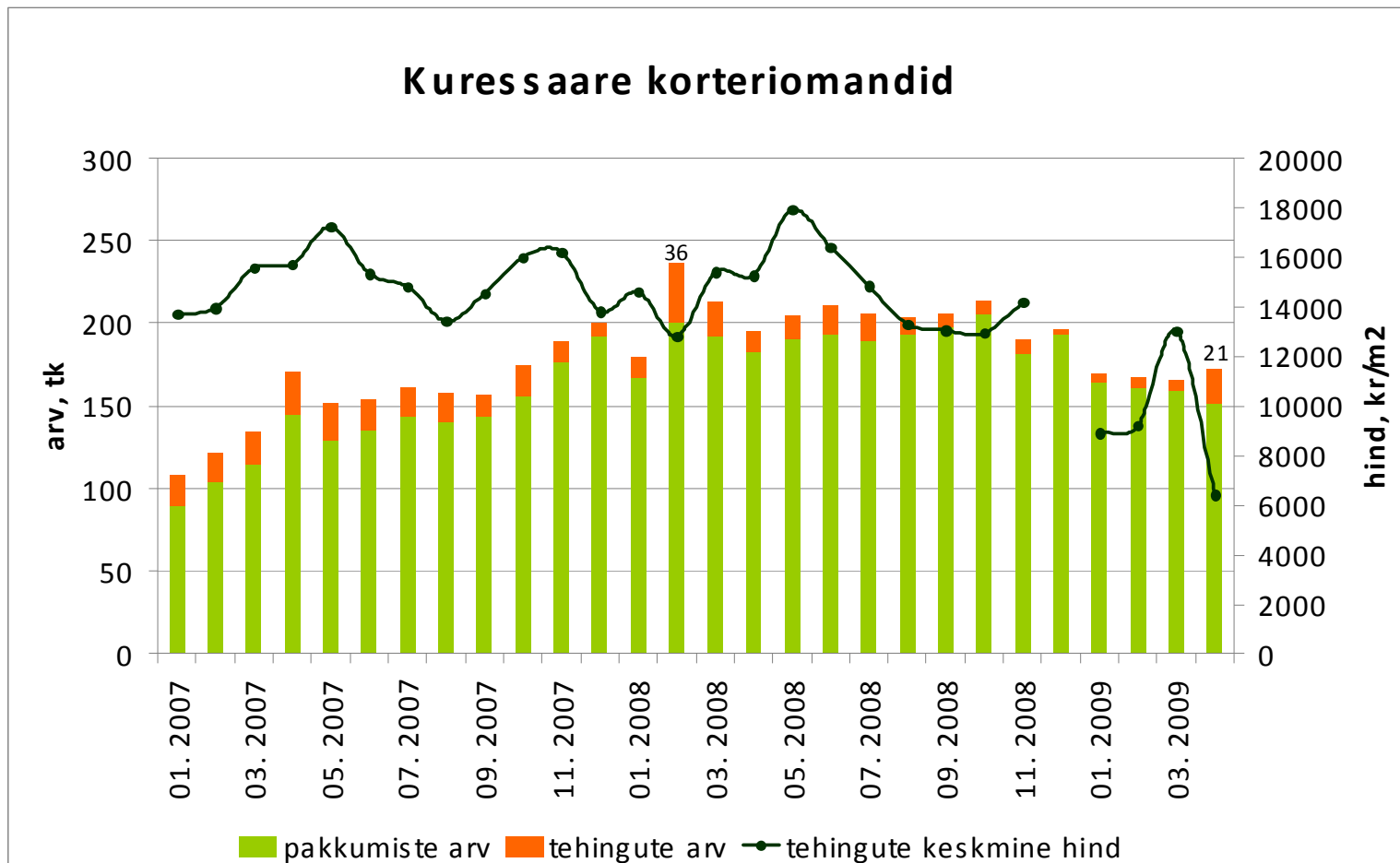


Tehingute arv on langenud 53%  
tehinguhind 37%



Allikad: Maa-amet, City24

Tehingute arv on langenud 43%  
tehinguhind 64%

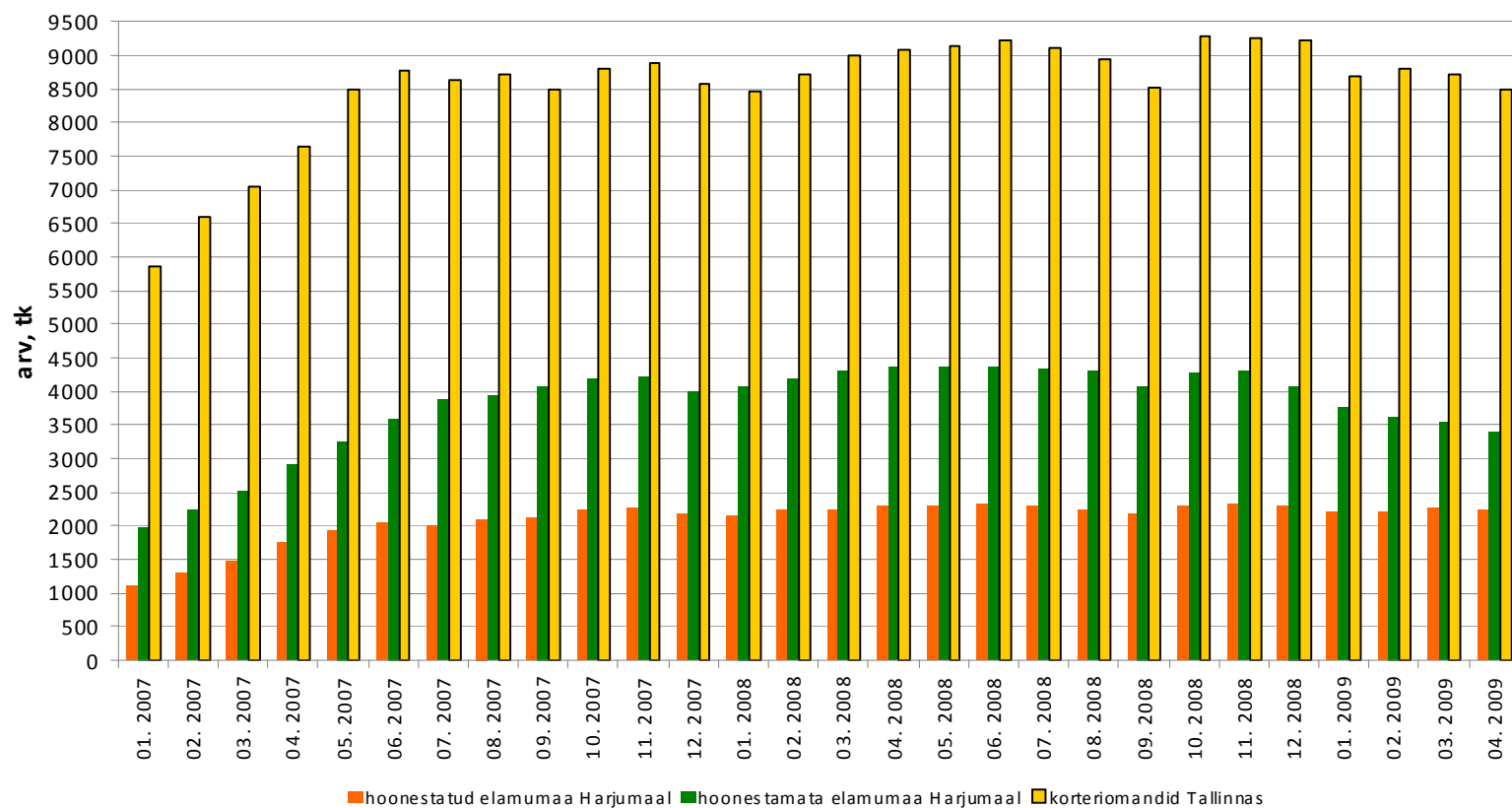


Allikad: Maa-amet, City24

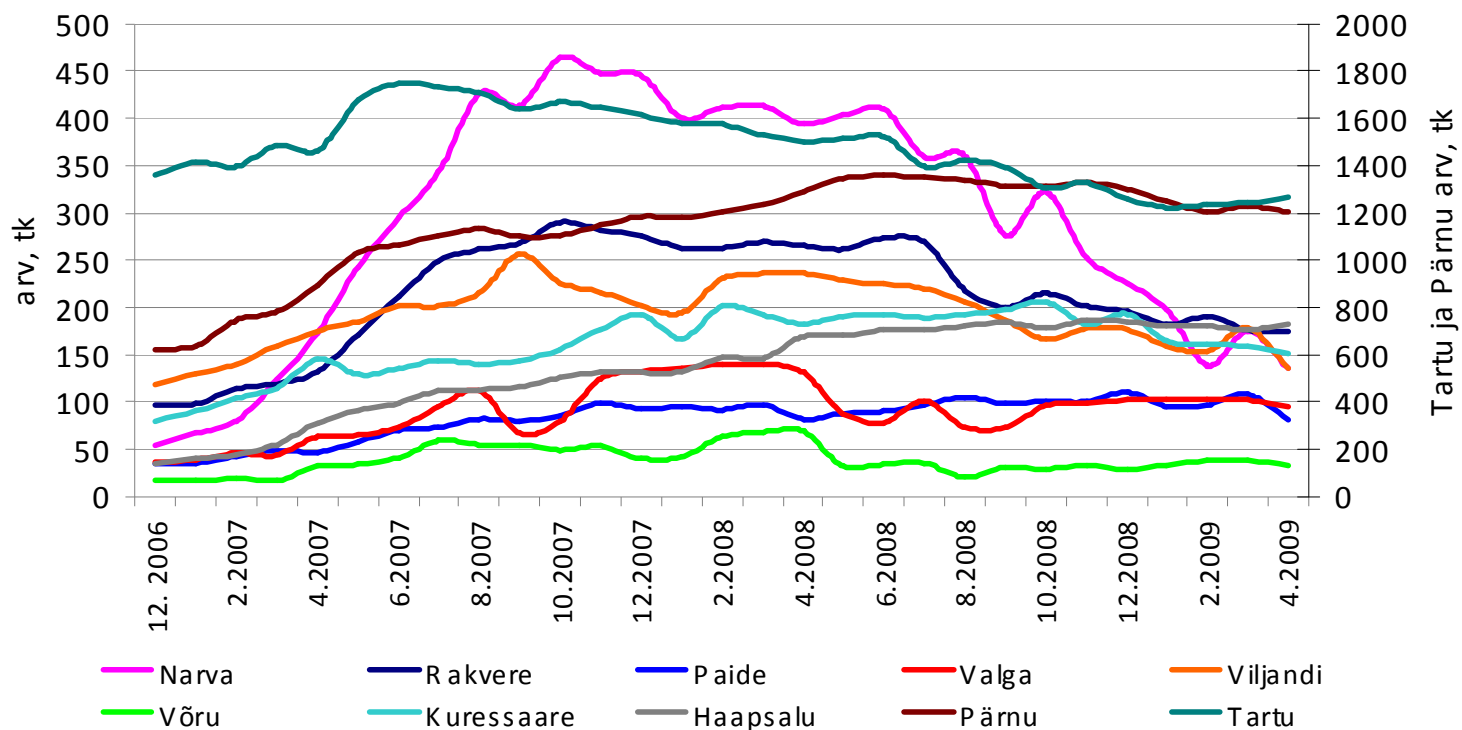




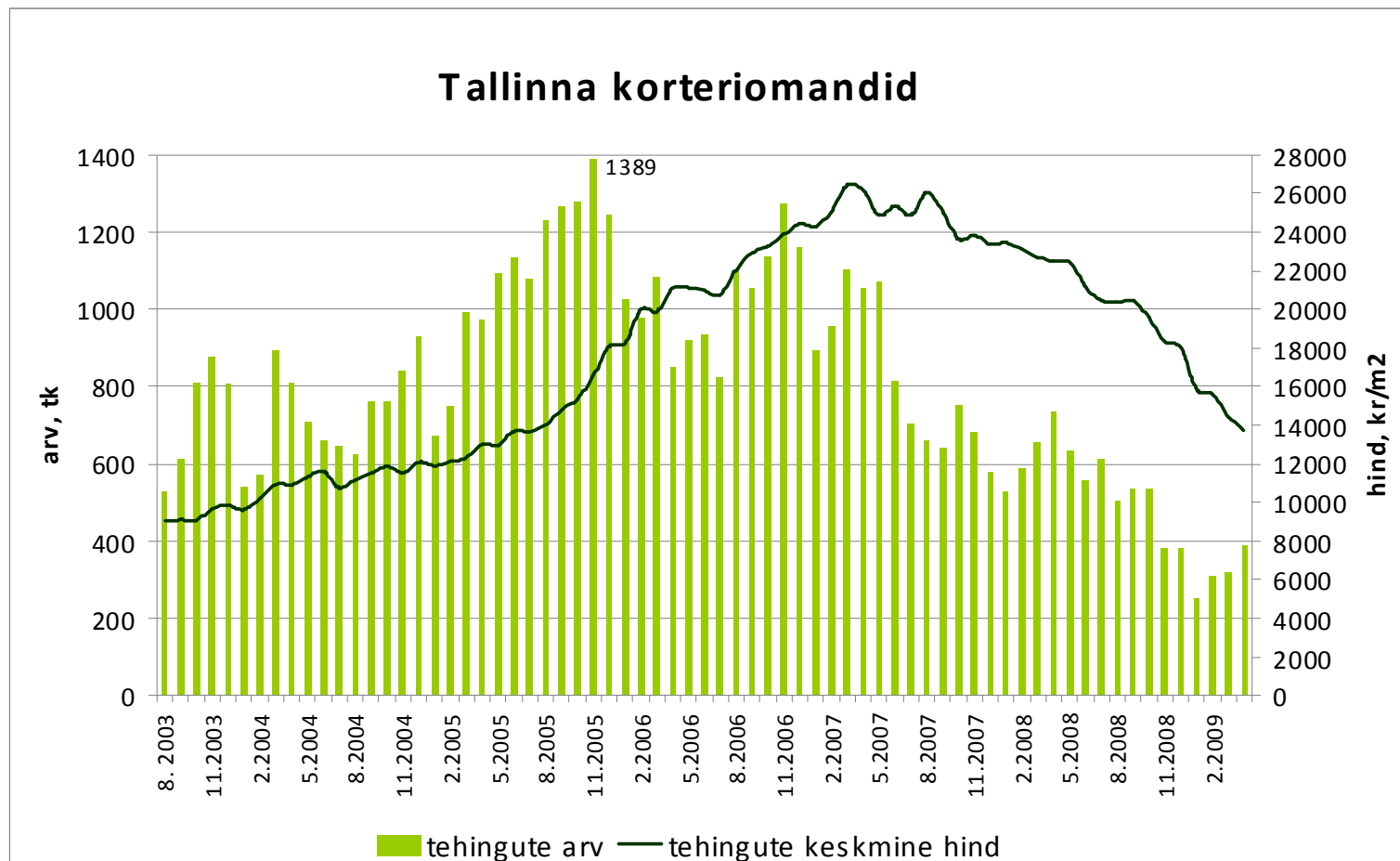
## Elukondliku kinnisvara pakumiste arv



### Korteriomandite pakkumiste arv Eesti linnades (City24 baasil)

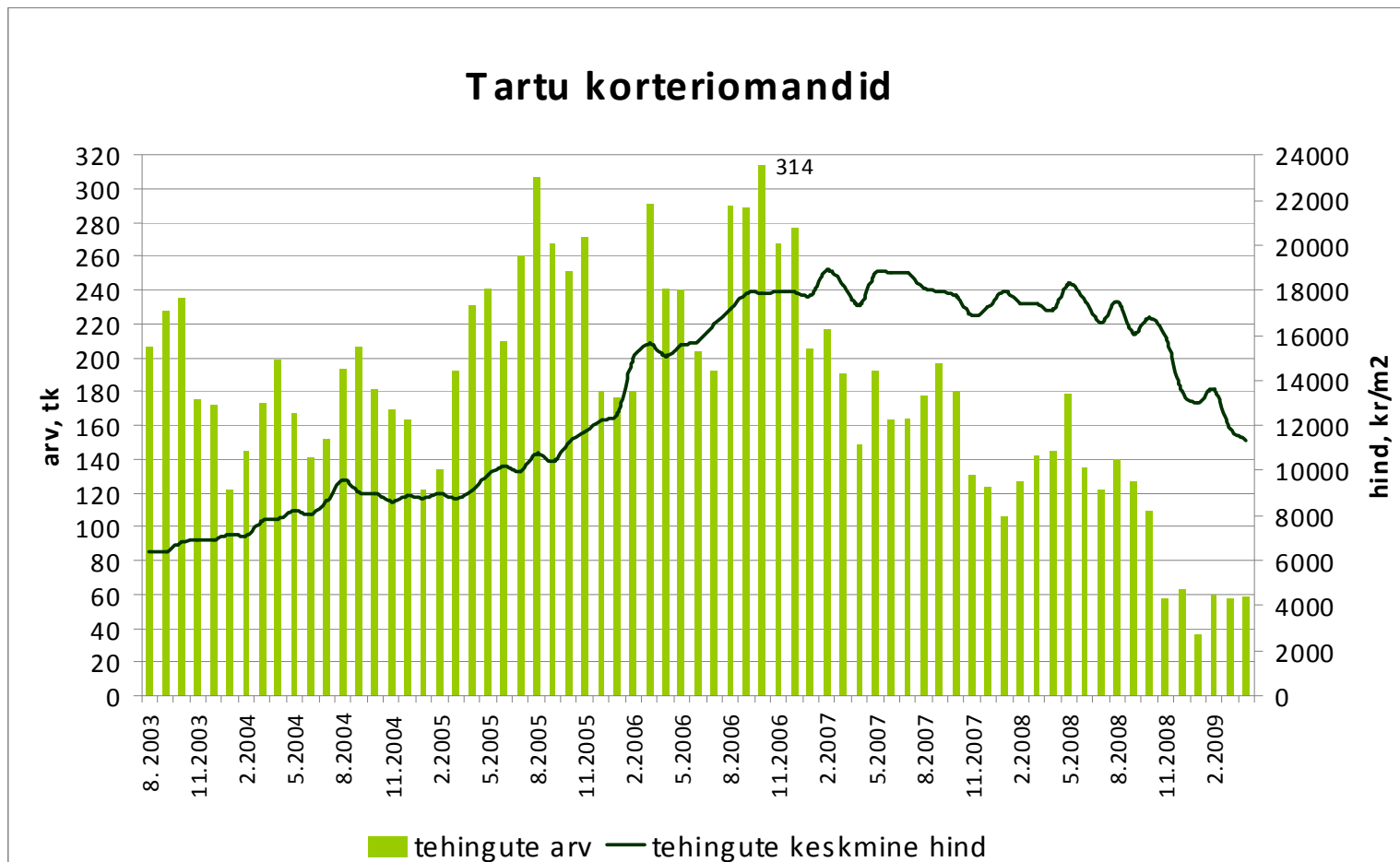


Tehingute arv on langenud 72%,  
tehinguhind 48%



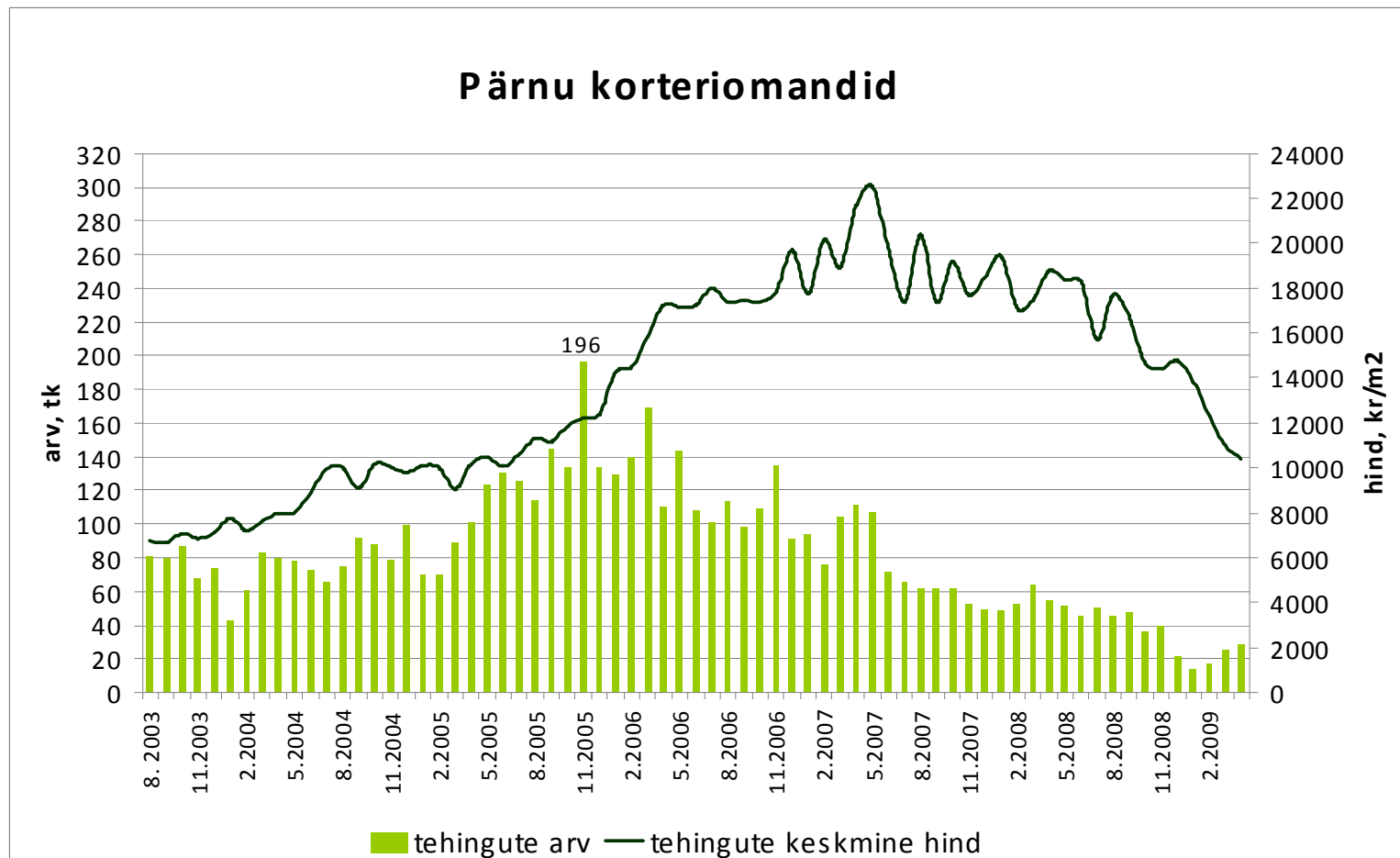
Allikas: Maa-amet

Tehingute arv on langenud 81%,  
tehinguhind 40%



Allikas: Maa-amet

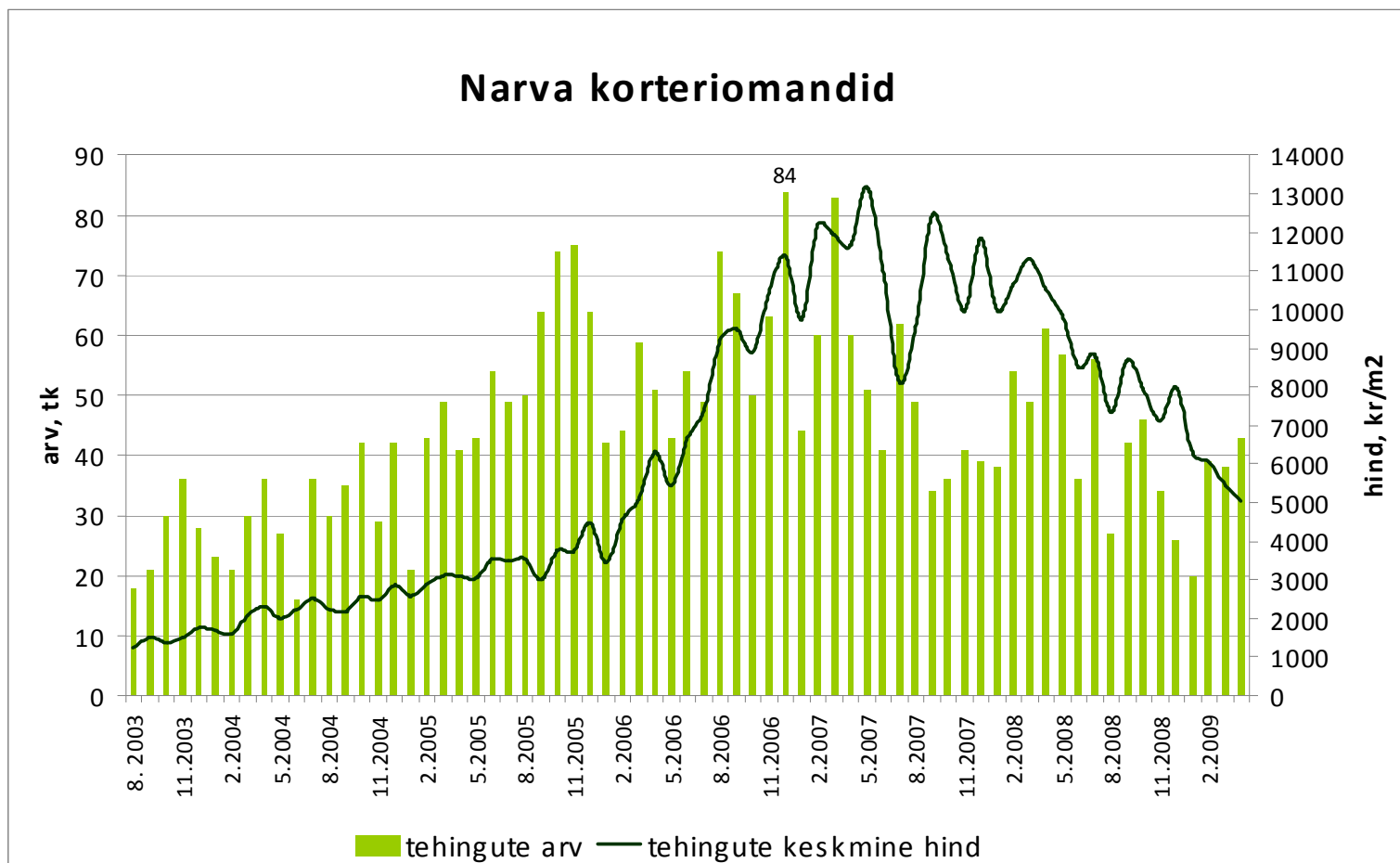
Tehingute arv on langenud 86%,  
tehinguhind 54%



Allikas: Maa-amet

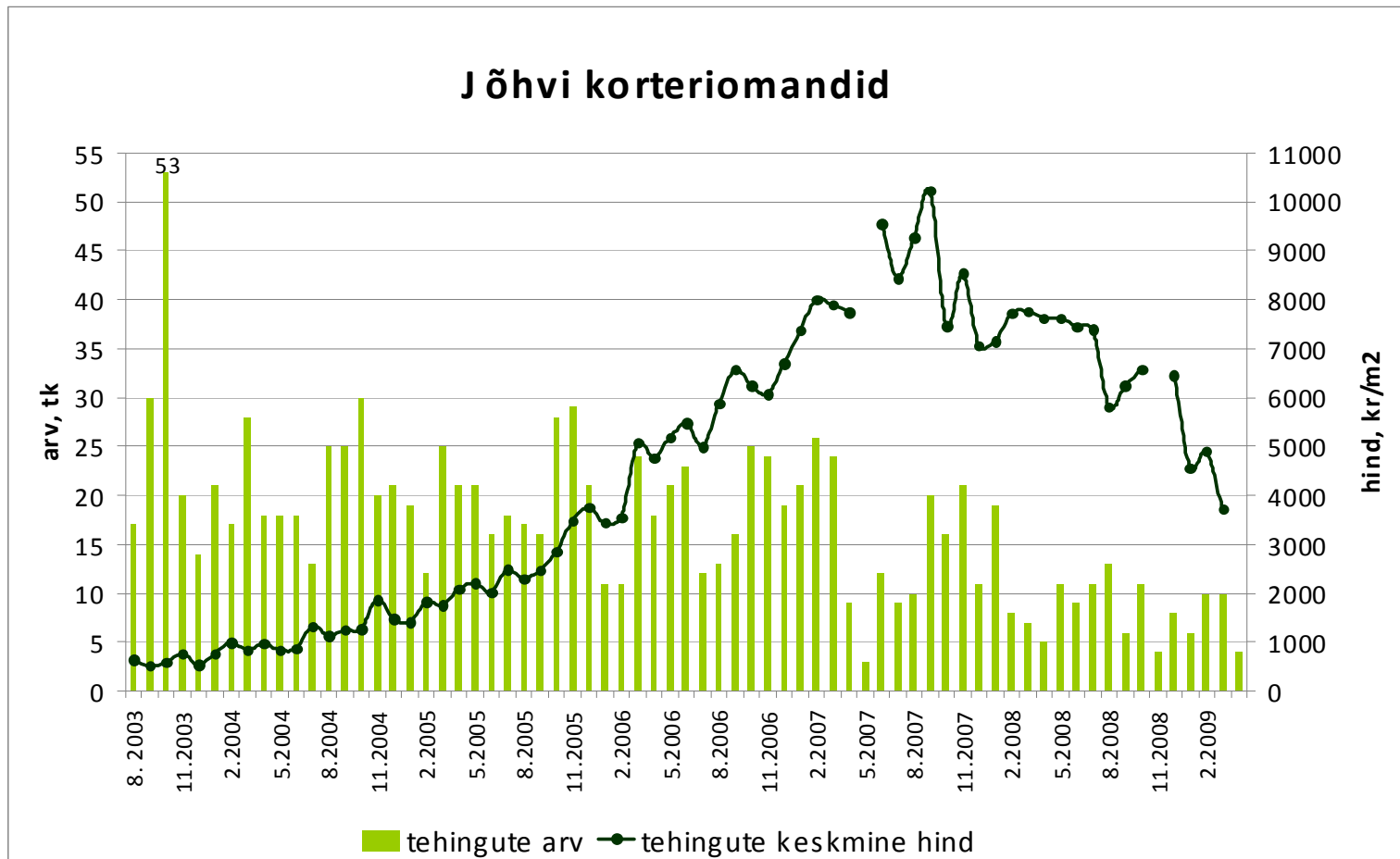


Tehingute arv on langenud 48%,  
tehinguhind 62 %



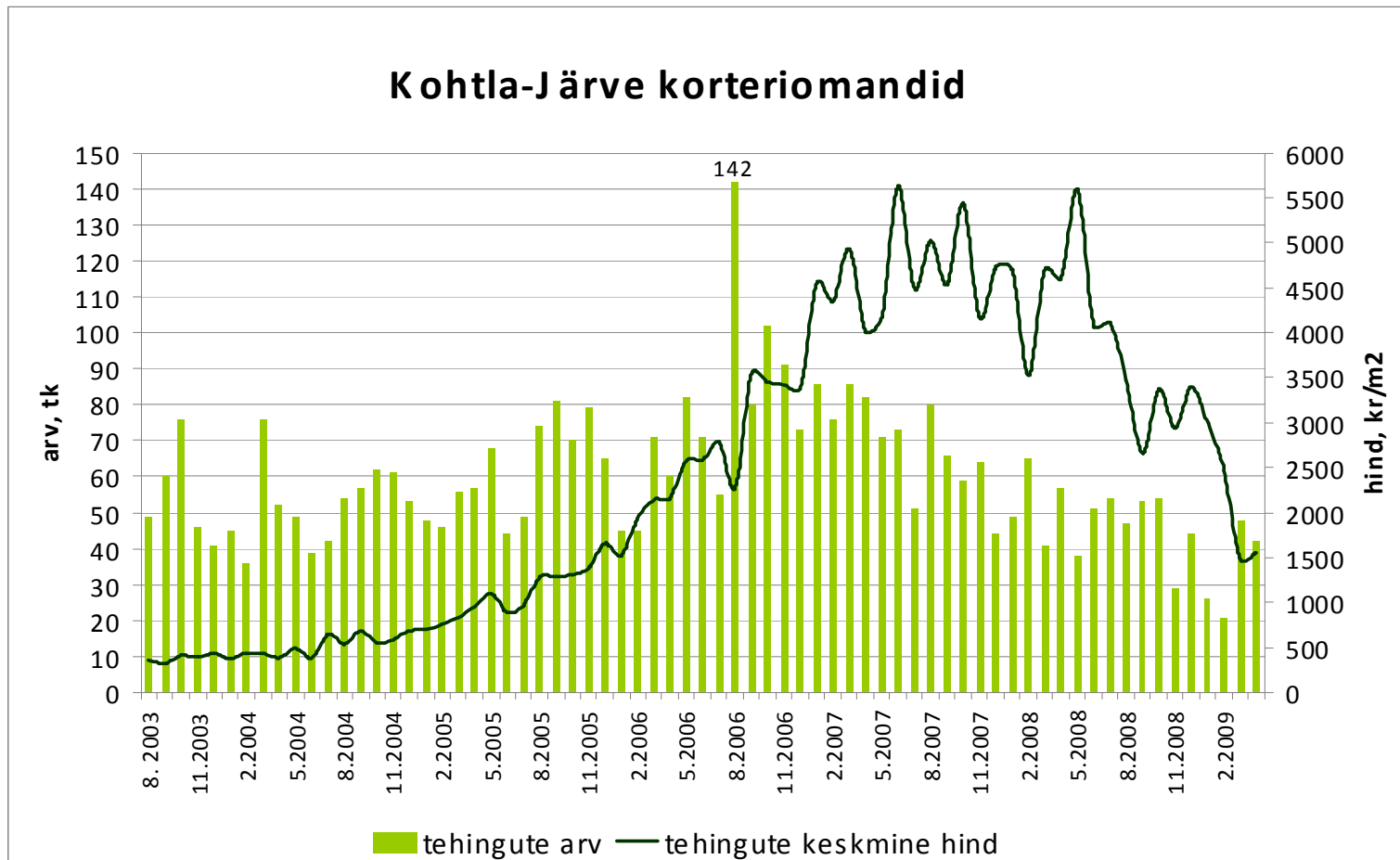
Allikas: Maa-amet

Tehingute arv on langenud 92%,  
tehinguhind 64%



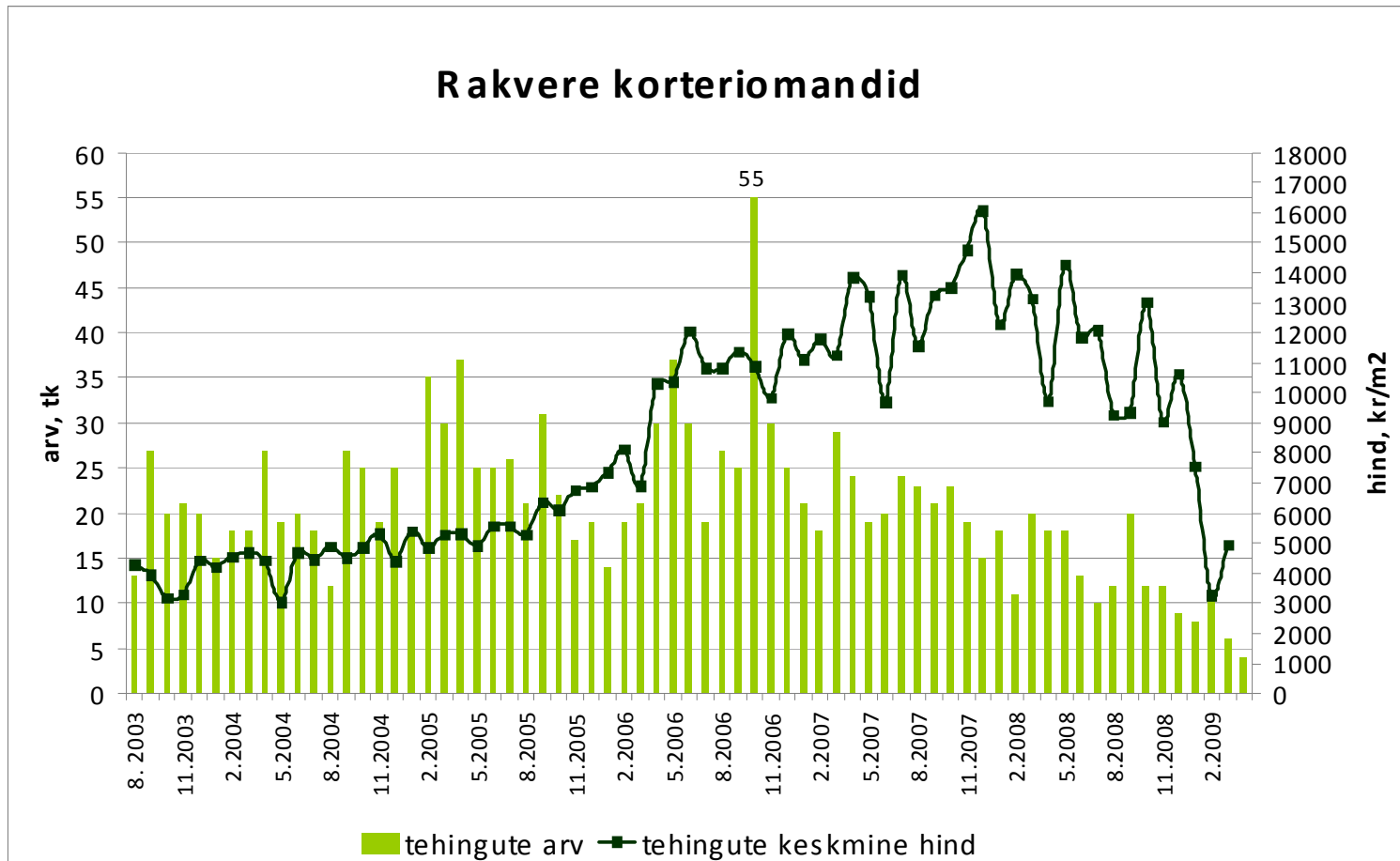
Allikas: Maa-amet

Tehingute arv on langenud 70%,  
tehinguhind 72%



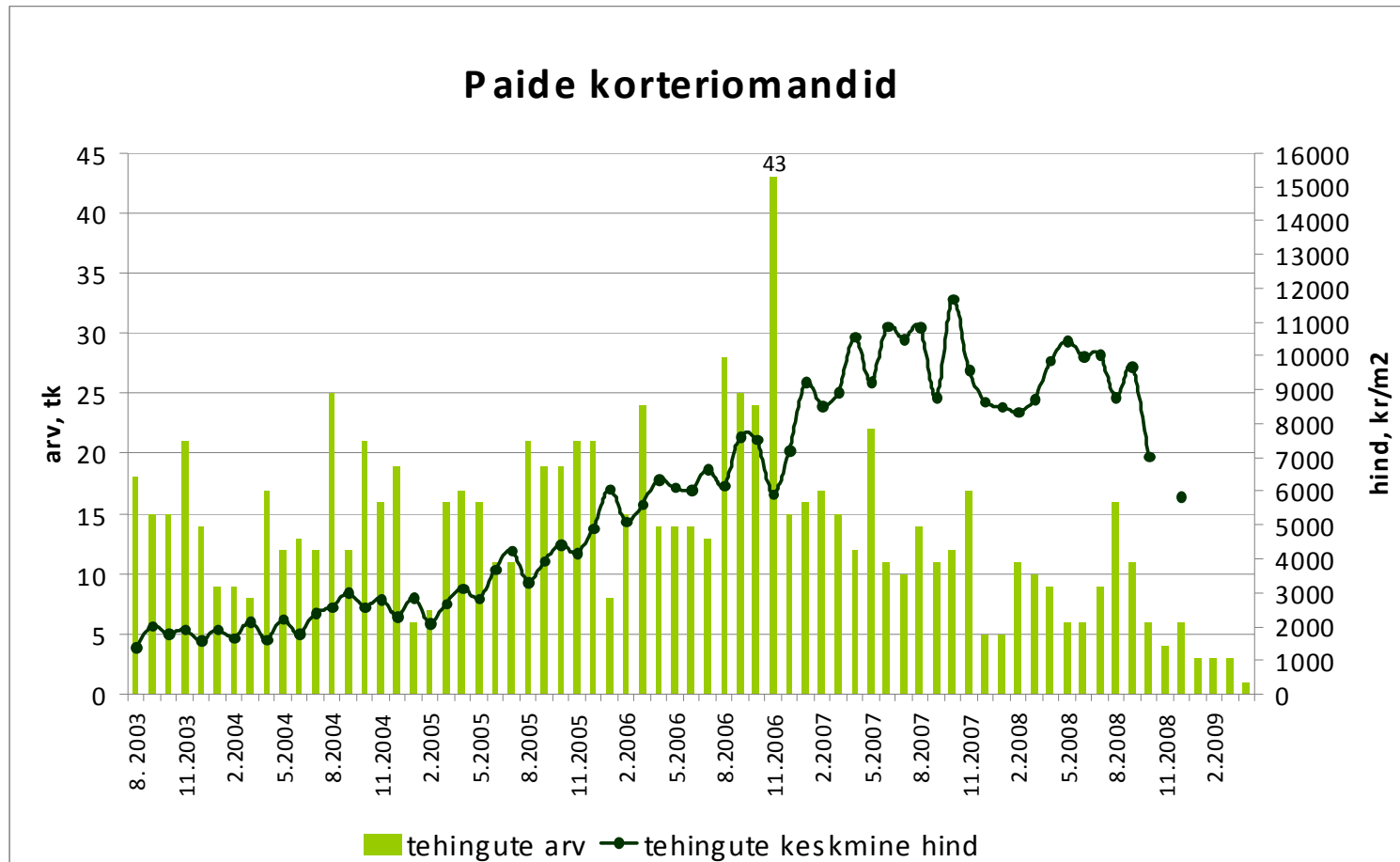
Allikas: Maa-amet

Tehingute arv on langenud 93%,  
tehinguhind 69%



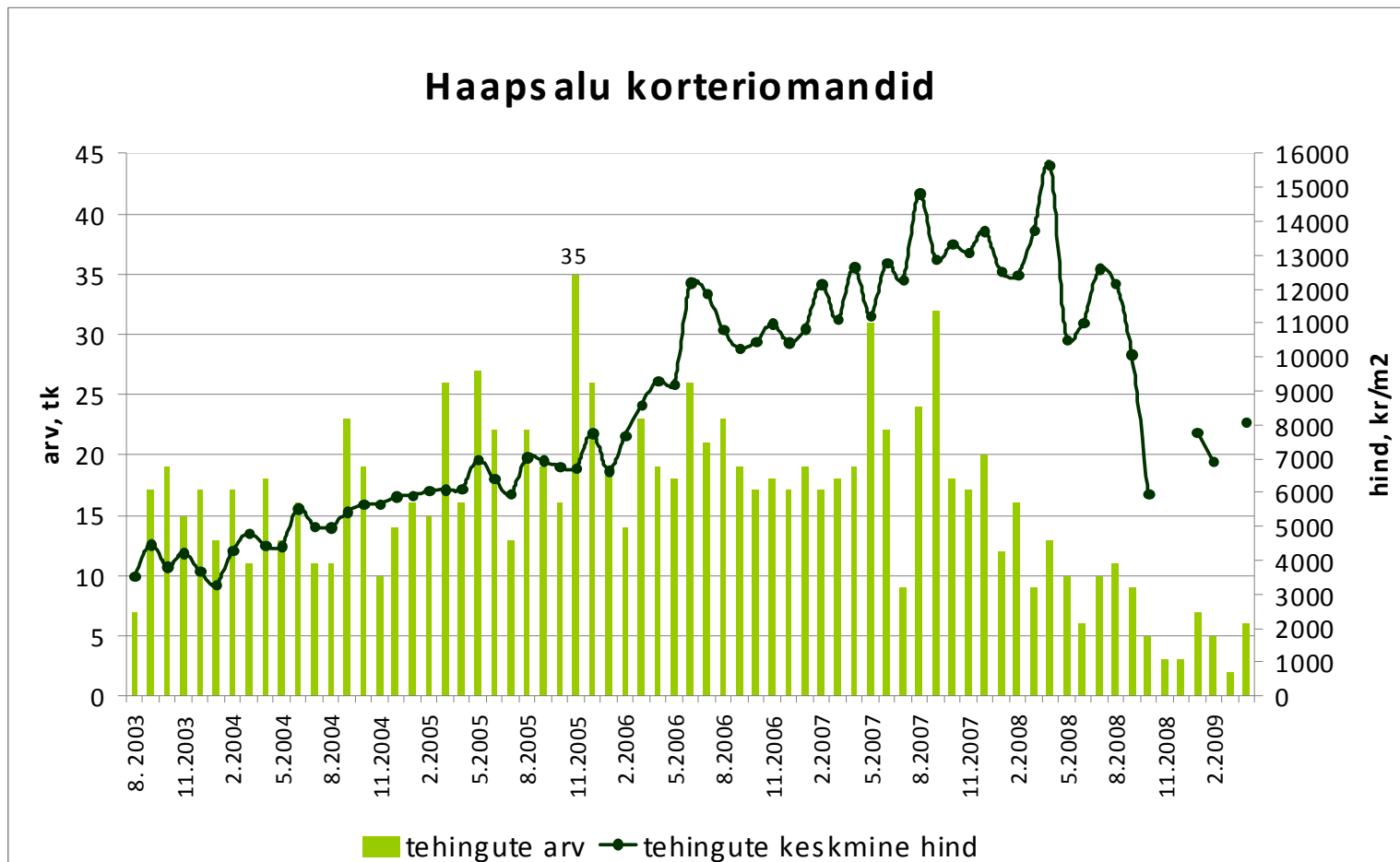
Allikas: Maa-amet

Tehingute arv on langenud 98%,  
tehinguhind ca 50%



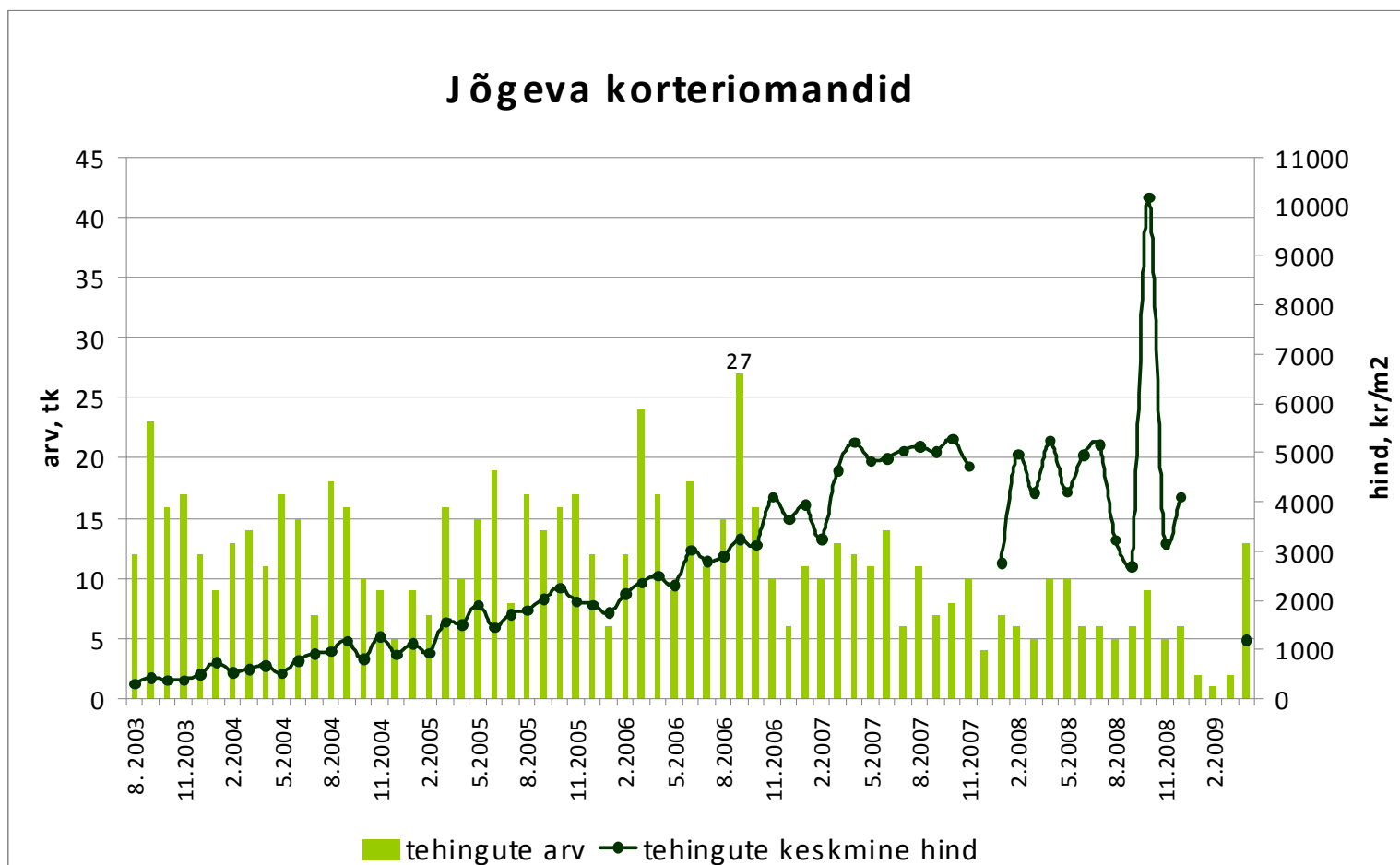
Allikas: Maa-amet

Tehingute arv on langenud 83%,  
tehinguhind ca 48%



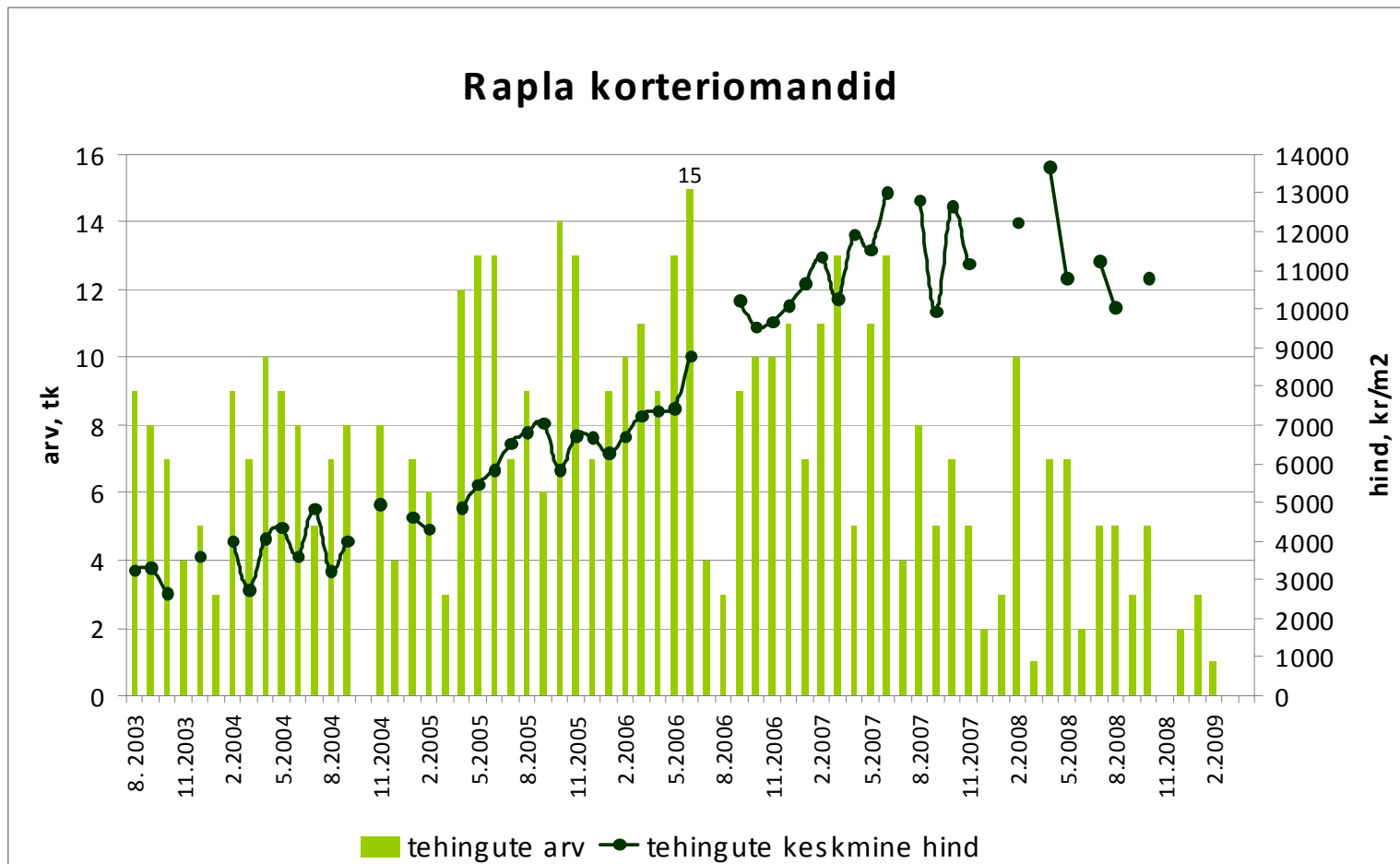
Allikas: Maa-amet

Tehingute arv on langenud 52%,  
tehinguhind ca 77%



Allikas: Maa-amet

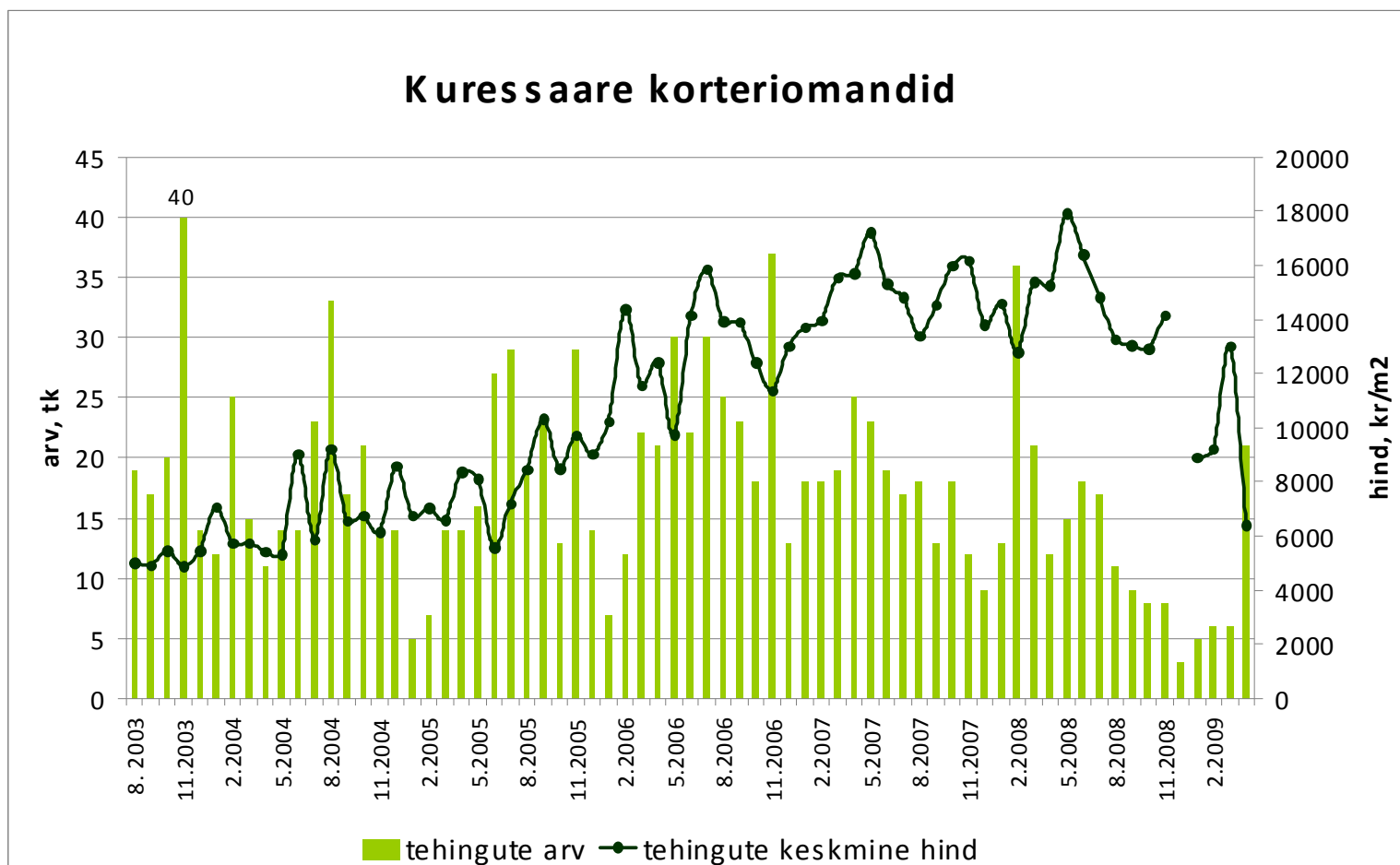
Tehingute arv on langenud 100%  
tehinguhind ca 21%



Allikas: Maa-amet



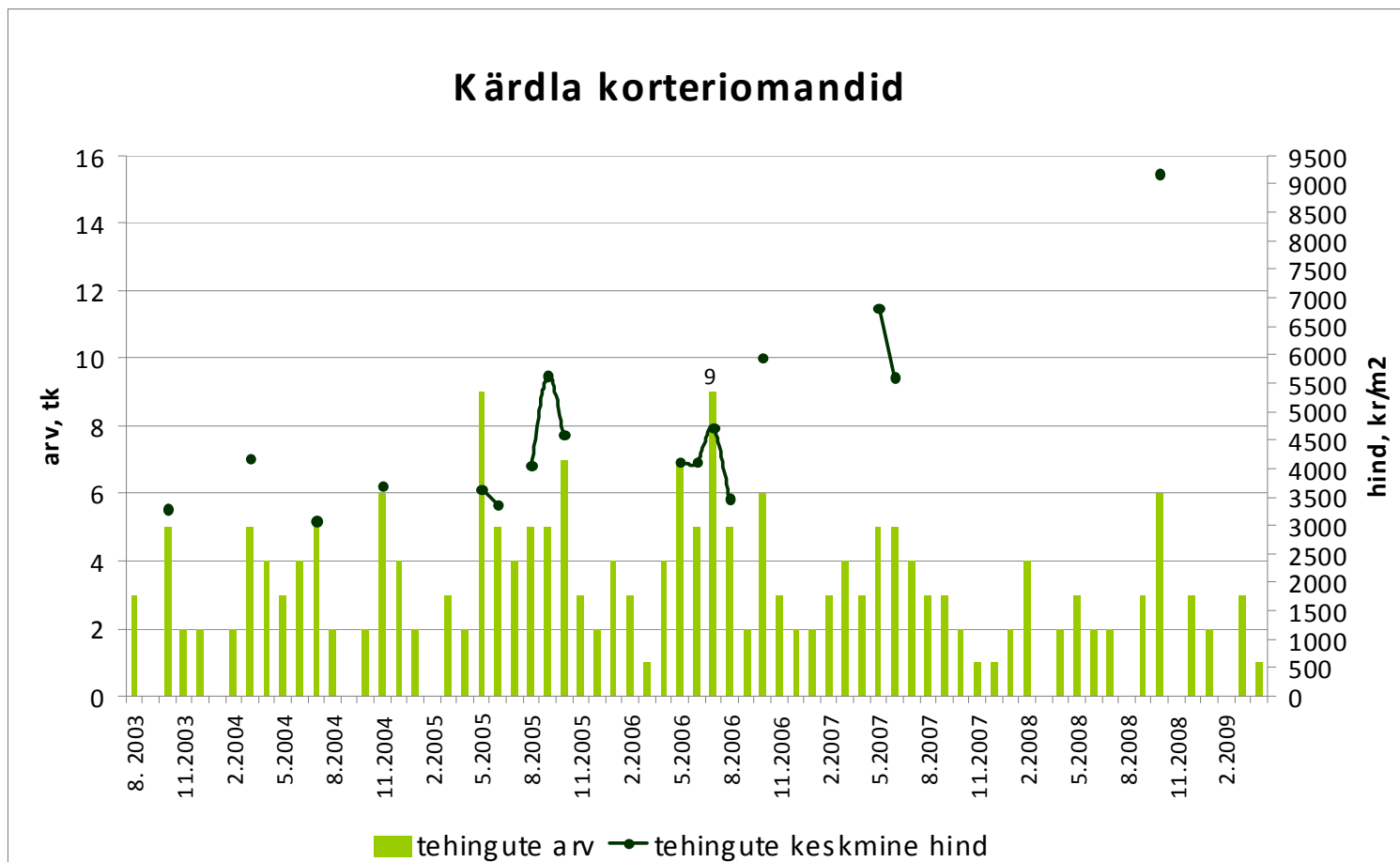
Tehingute arv on langenud 43%,  
tehinguhind 64%



Allikas: Maa-amet

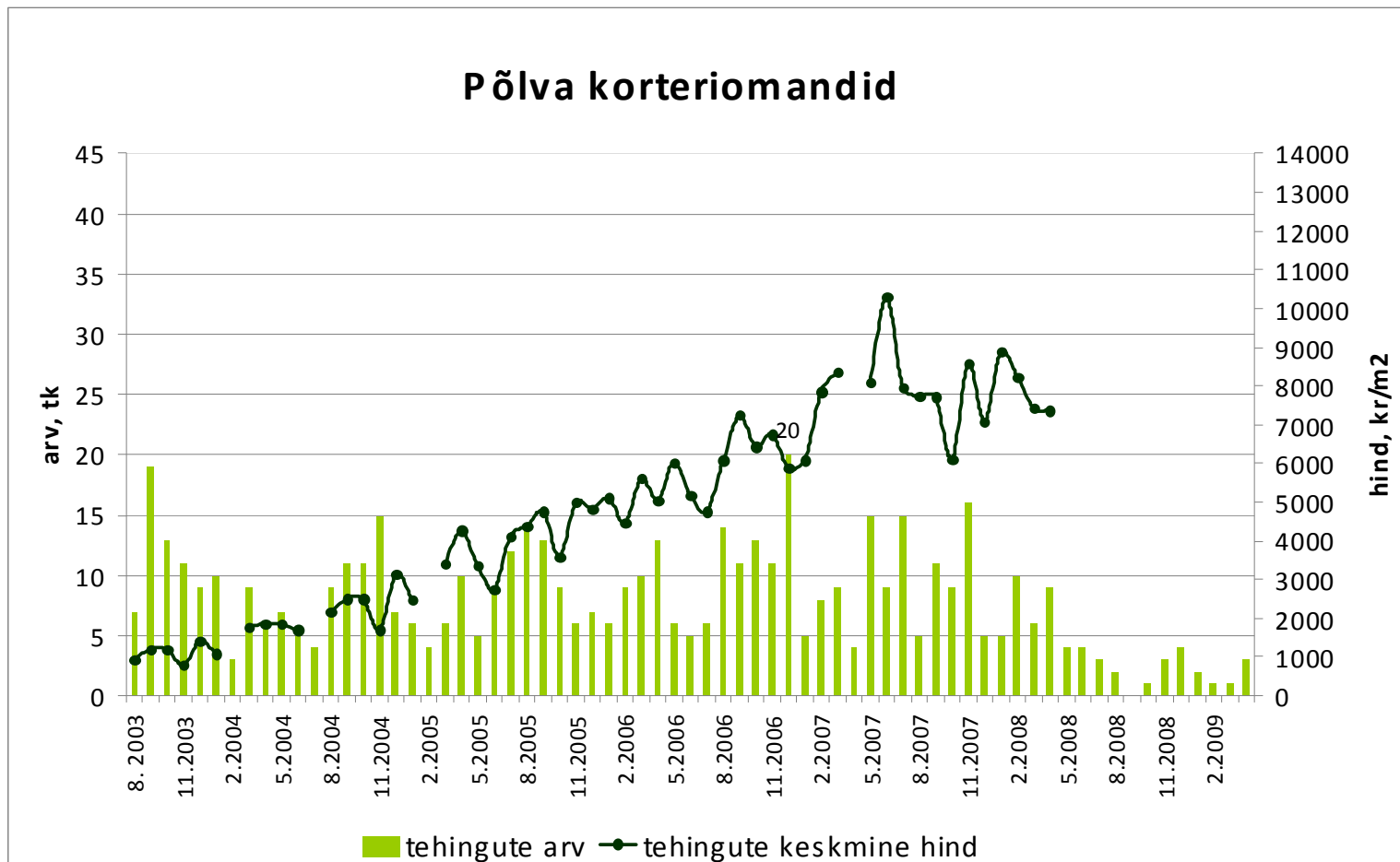


Tehingute arv on langenud 89%



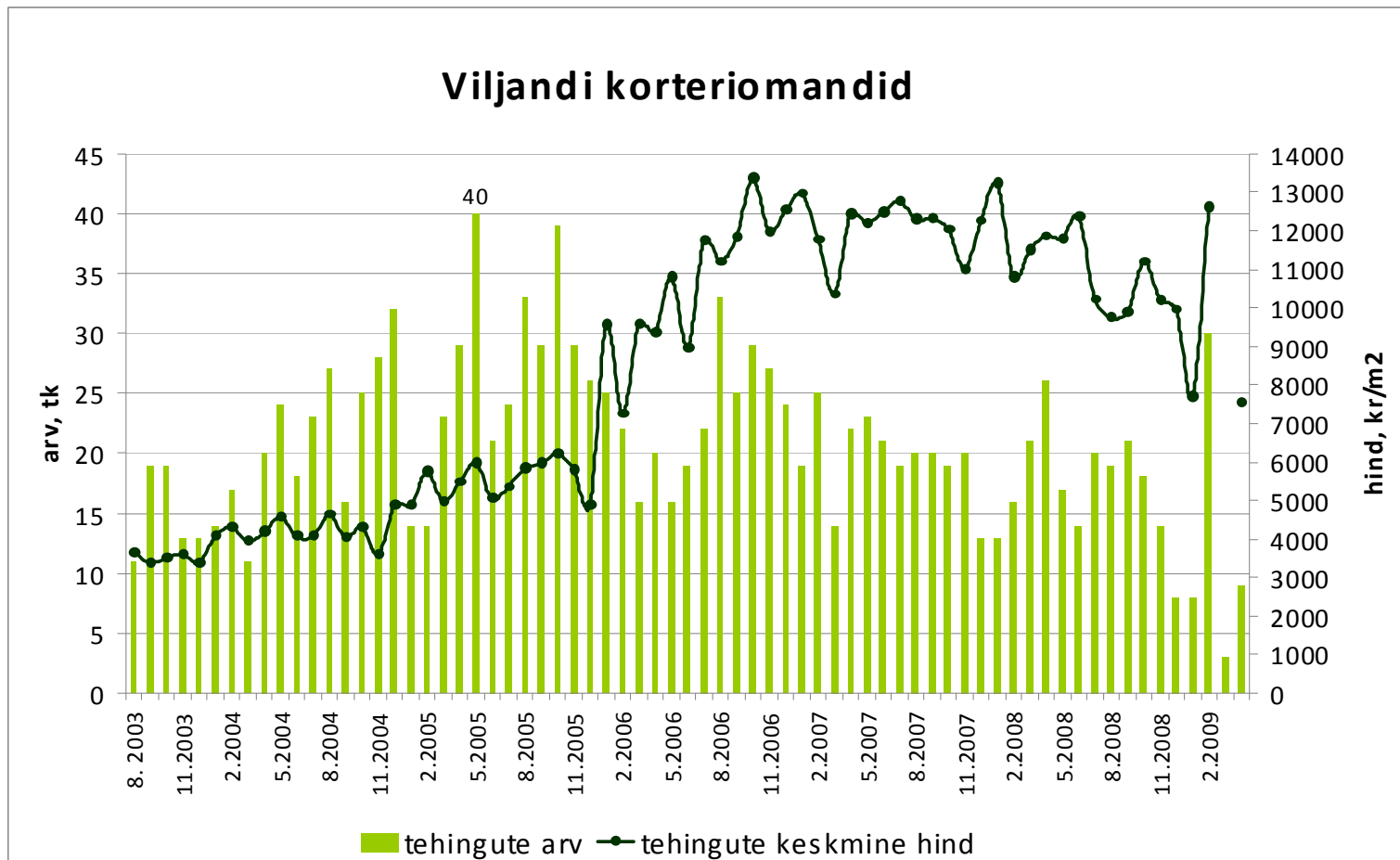
Allikas: Maa-amet

Tehingute arv on langenud 85%,  
tehinguhind ca 28%



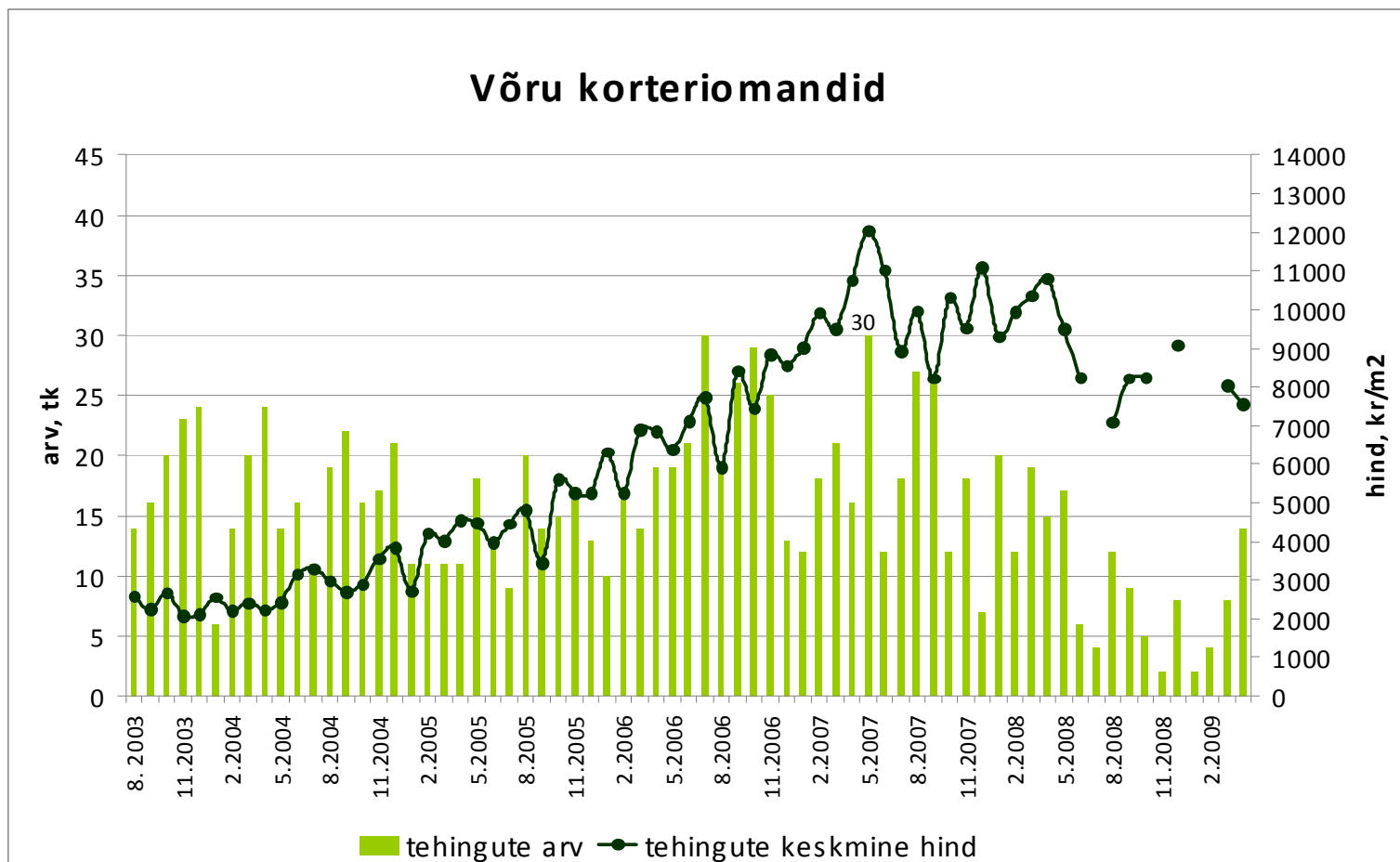
Allikas: Maa-amet

Tehingute arv on langenud 78%



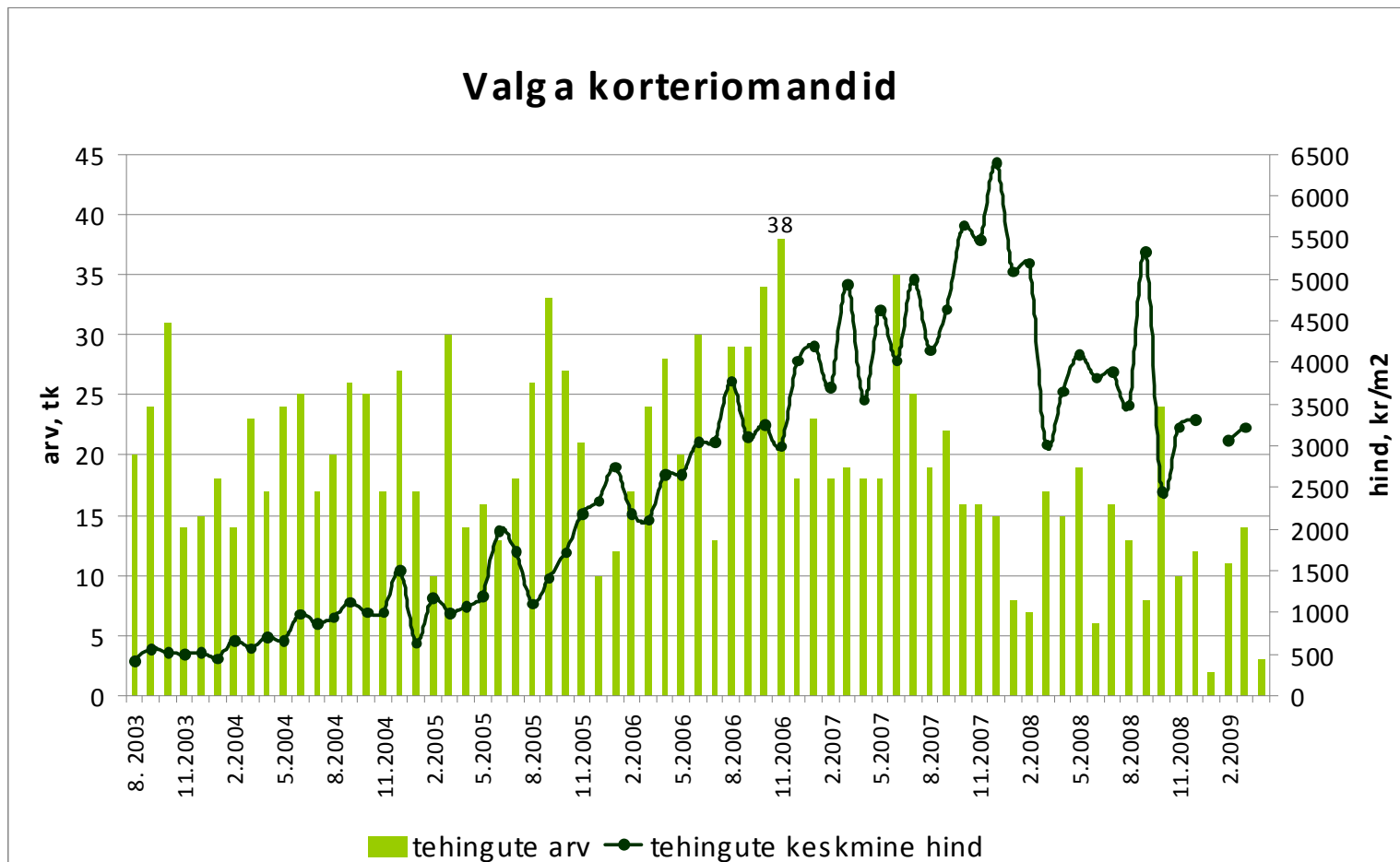
Allikas: Maa-amet

Tehingute arv on langenud 53%,  
tehinguhind 37%



Allikas: Maa-amet

Tehingute arv on langenud 92%,  
tehinguhind 50%



Allikas: Maa-amet