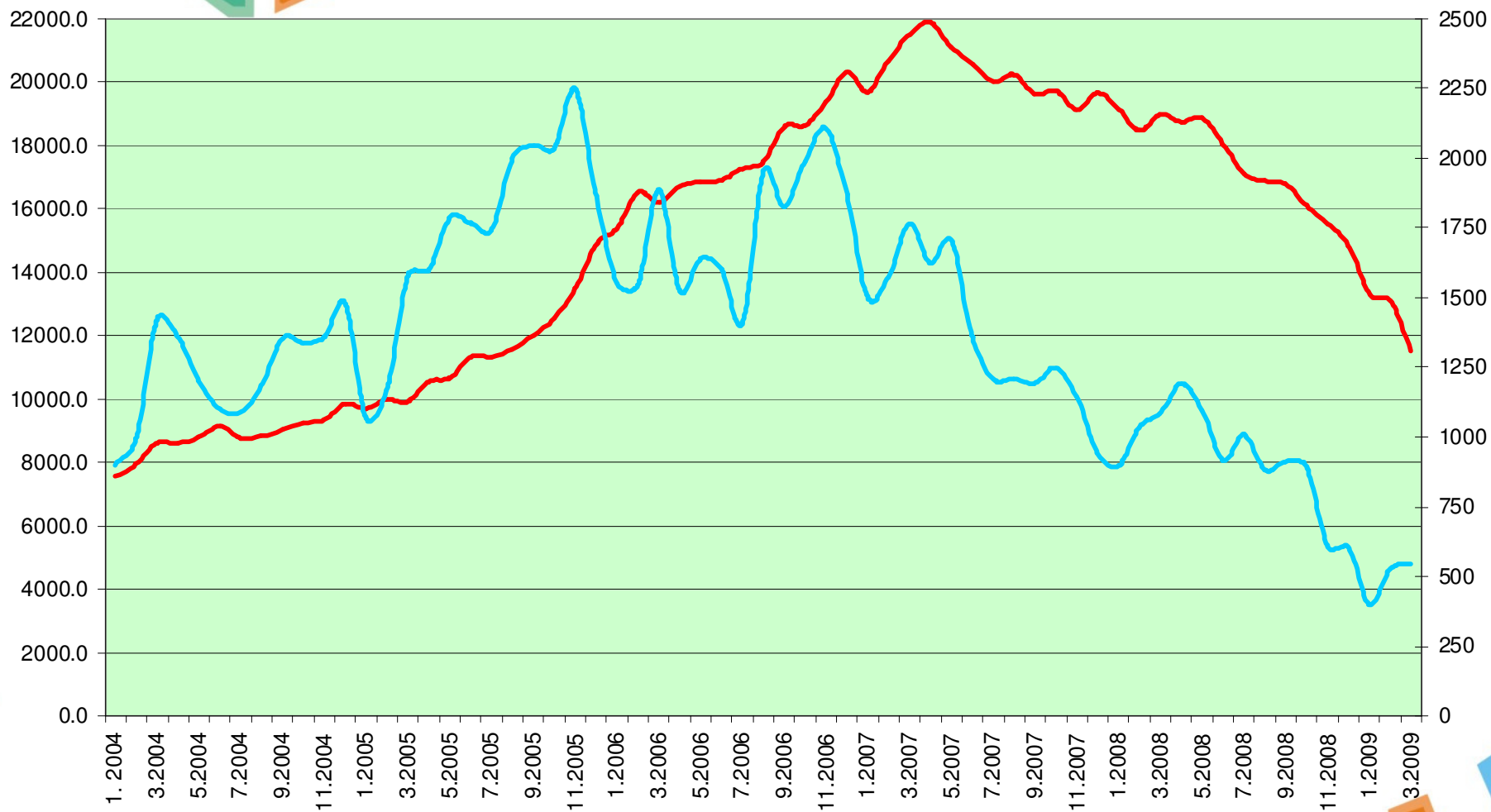




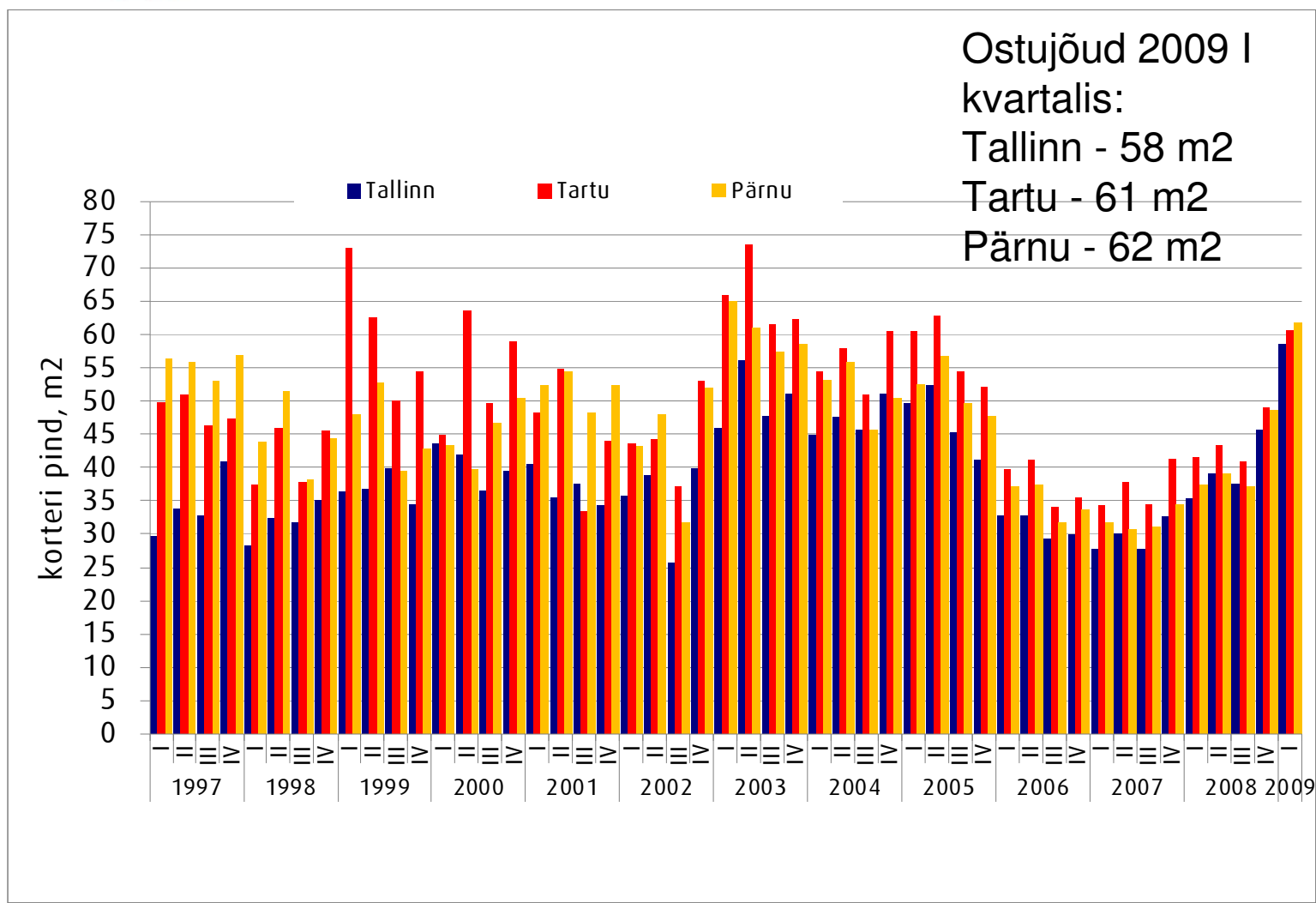
# **KINNISVARATURU AKTIIVSUS JA REGIONAALSED ERIPÄRAD**

## PINDI HINNAINDEKS

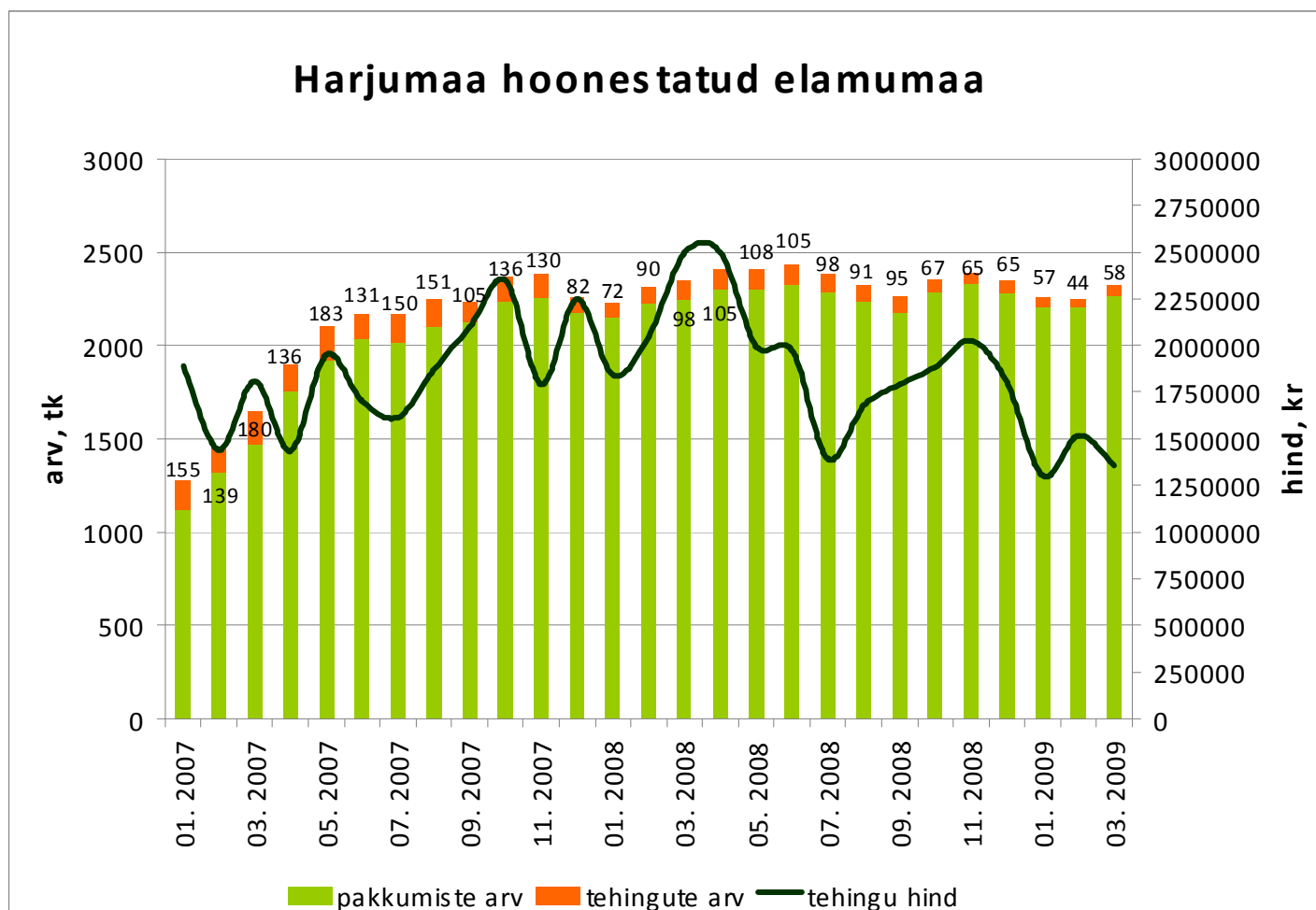


— Eesti 17 suurema linna korterite ruutmeetri kaalutud keskmine hind (allikad: Pindi Kinnisvara andmebaasid, Maa-amet, Statistikaamet)  
 — Eesti 17 suurema linna tehingute arv (allikas: Maa-amet)

## Kinnisvara ostujõud keskmise palga baasil arvatatud laenuvõime järgi:

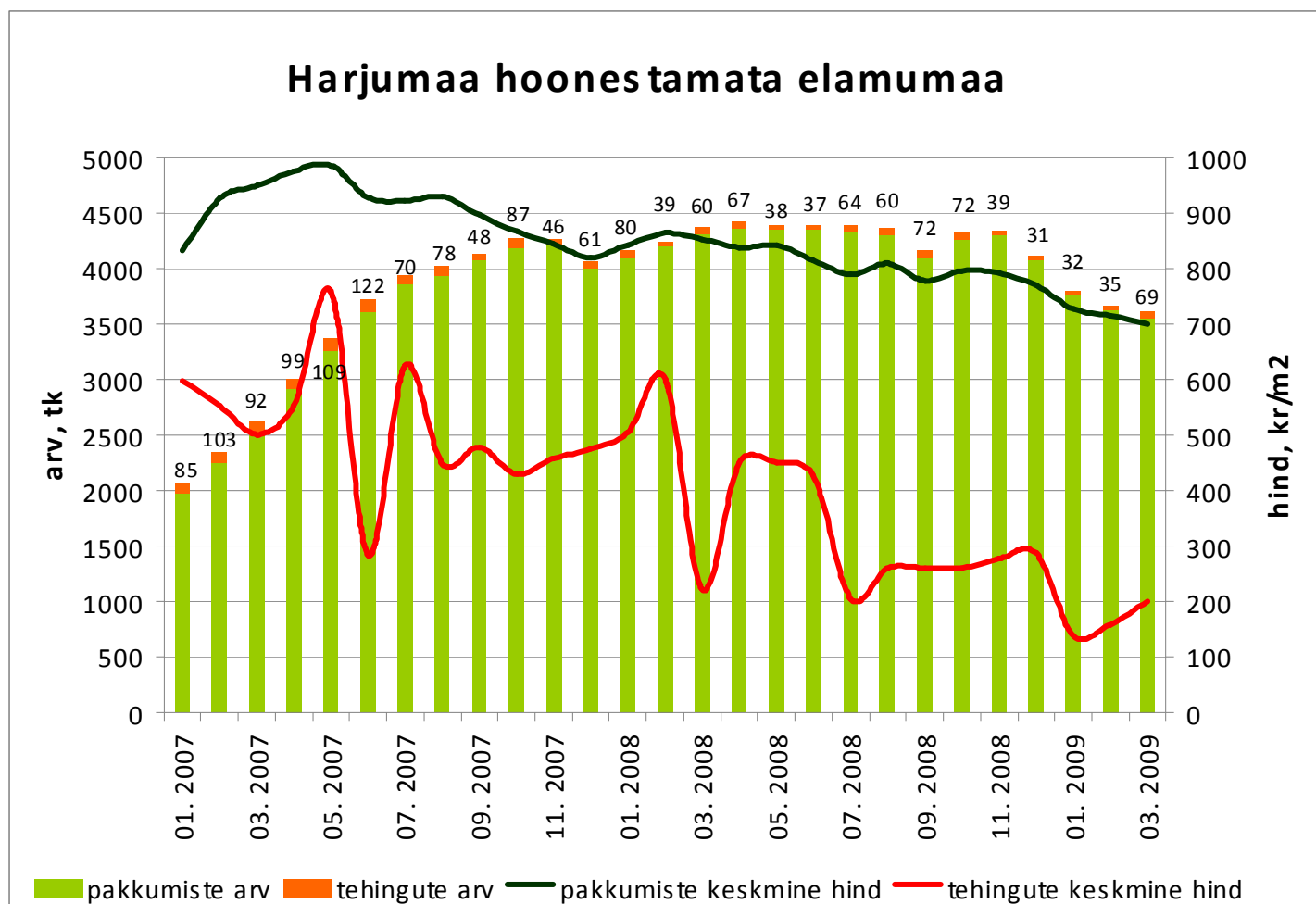


Tehingute arv on langenud 68%,  
tehinguhind 46%



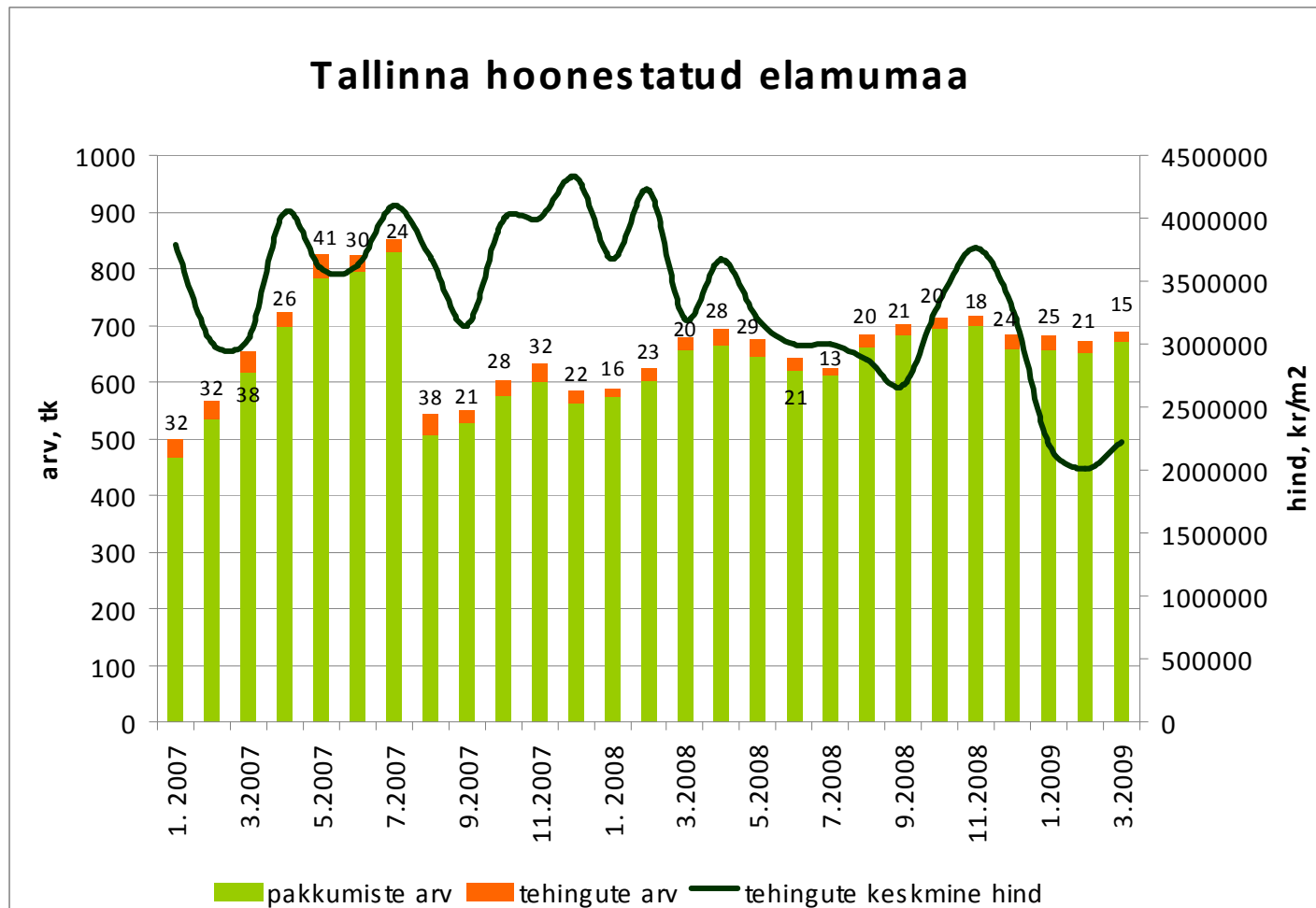
Allikad: Maa-amet, City24

Tehingute arv on langenud 43%,  
tehinguhind 74%



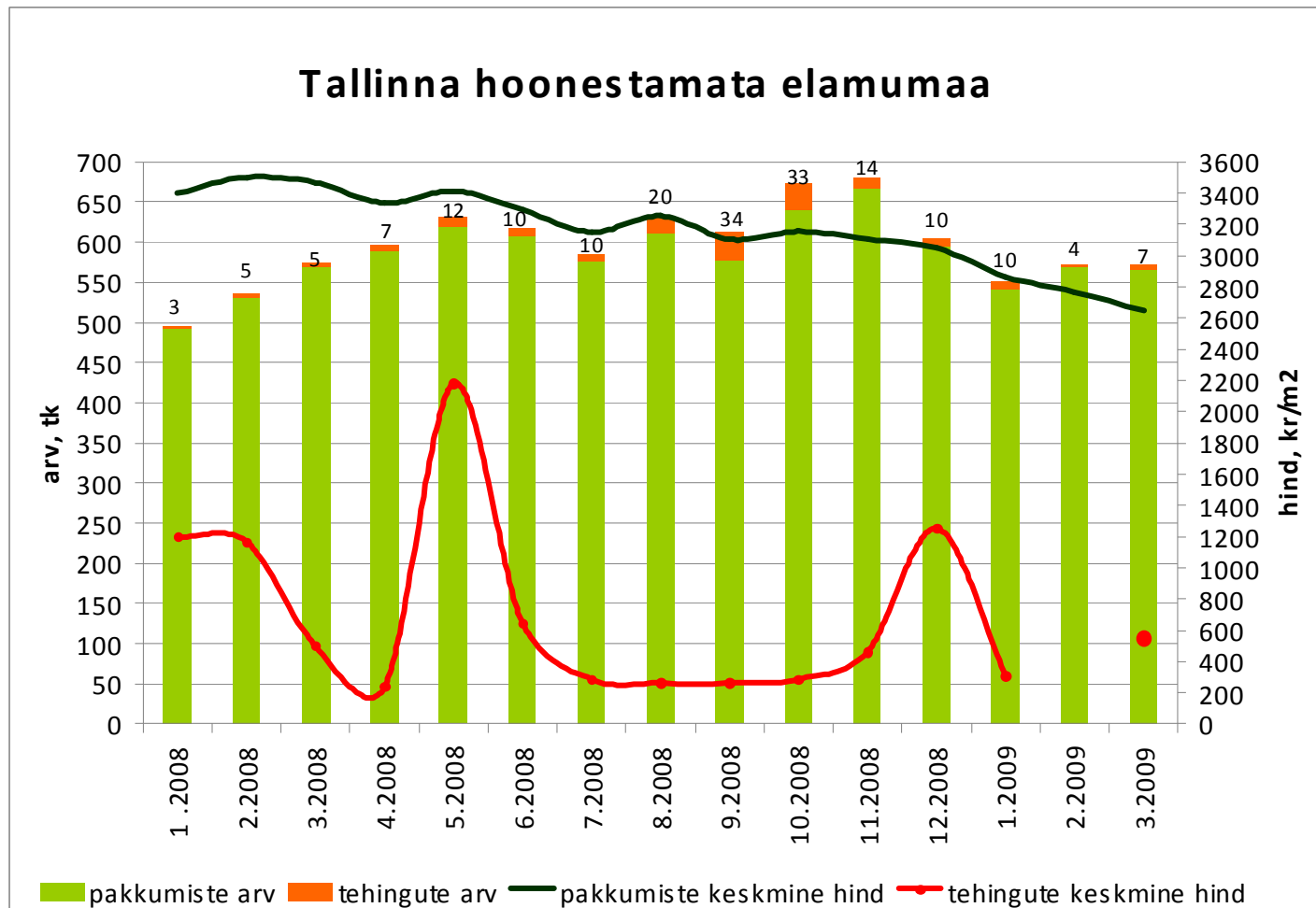
Allikas: Maa-amet

Tehingute arv on 2006.a. märtsist  
langenud 80%, tehinguhind  
2007.a. dets-st 48%



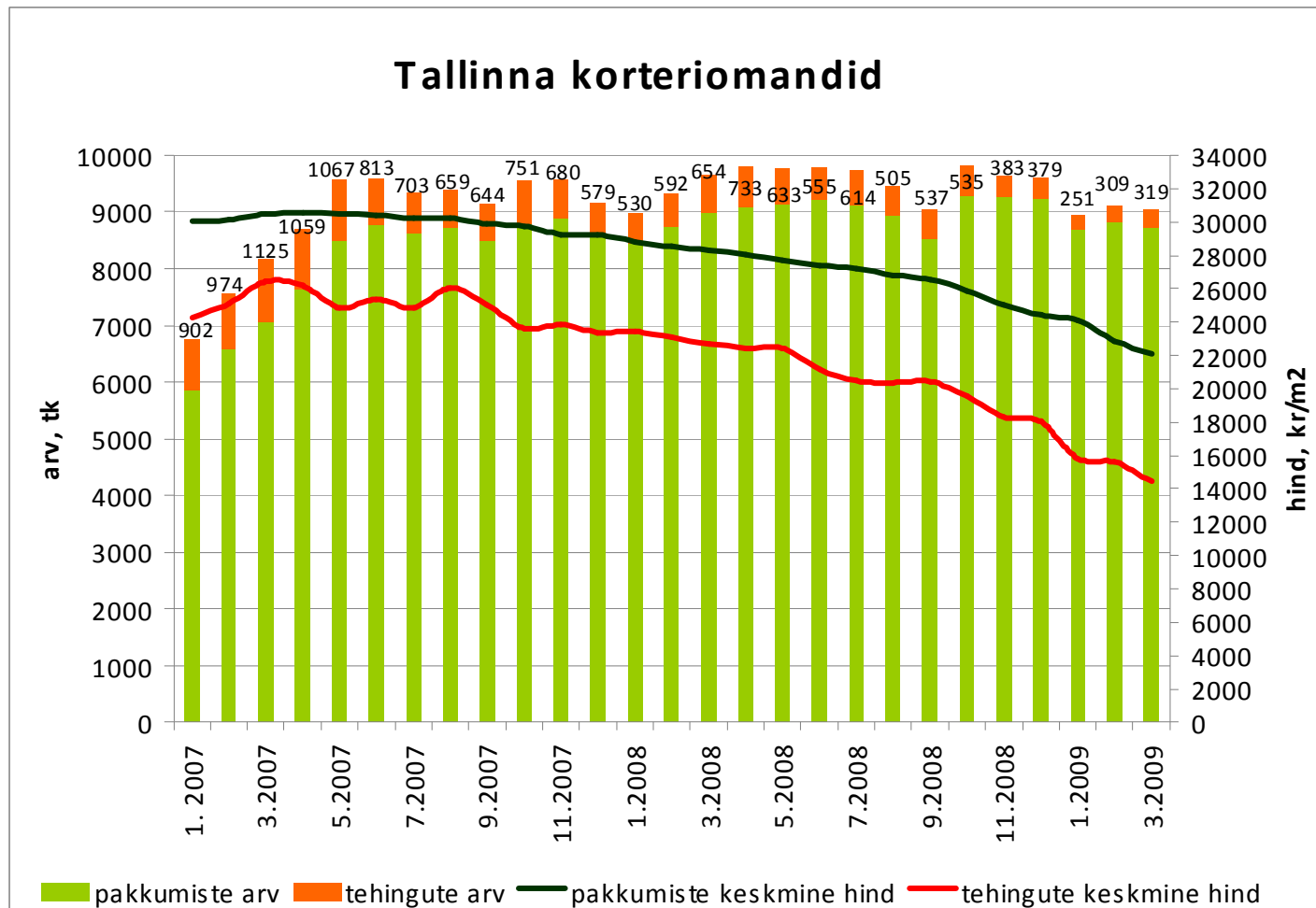
Allikad: Maa-amet, City24

Tehingute arv on 2006.a. maist langenu-  
nud 74%, tehinguhind 2007.a.  
juunist 80%



Allikad: Maa-amet, City24

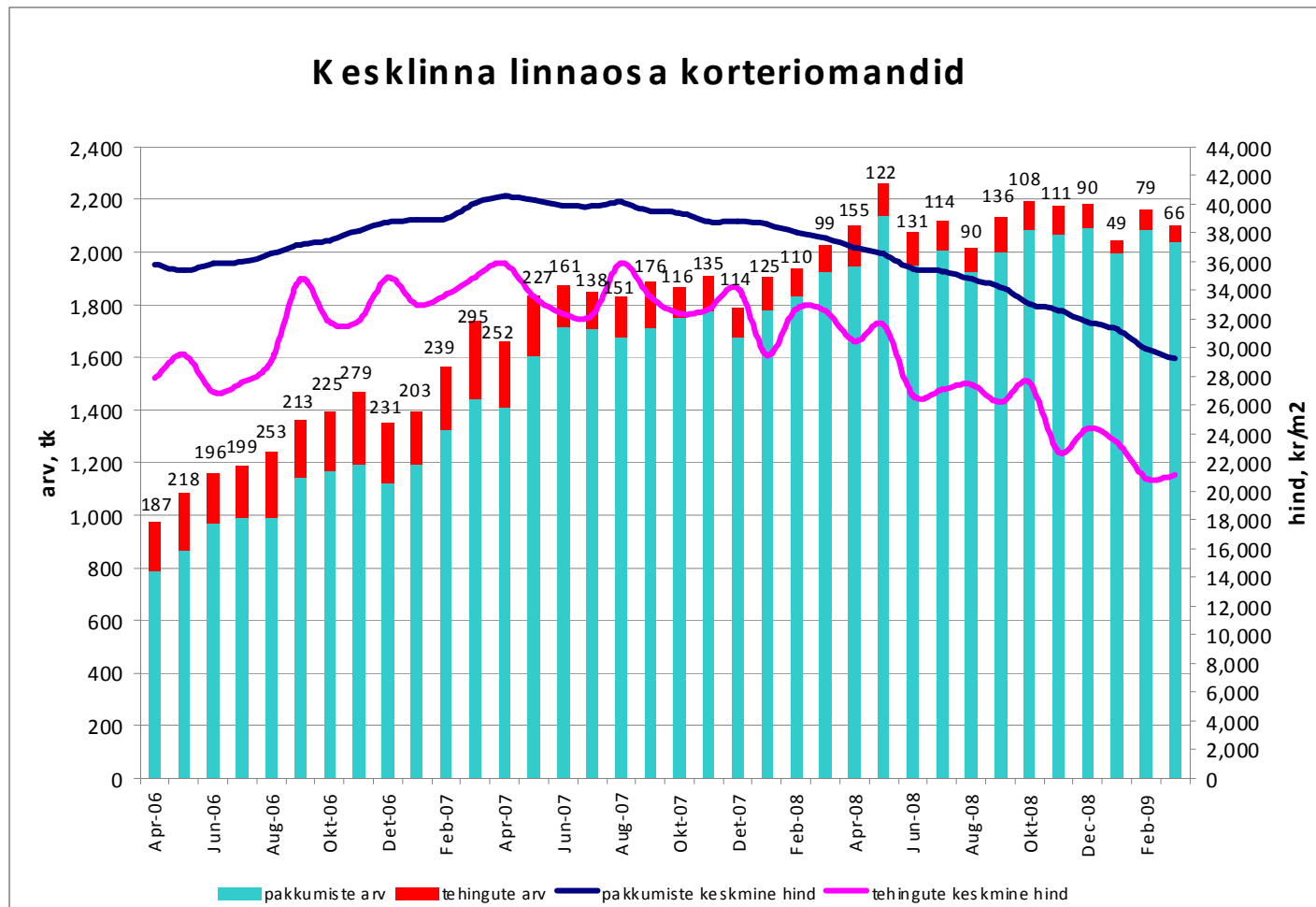
Tehingute arv on langenud 72%,  
tehinguhind 45%



Allikad: Maa-amet, City24



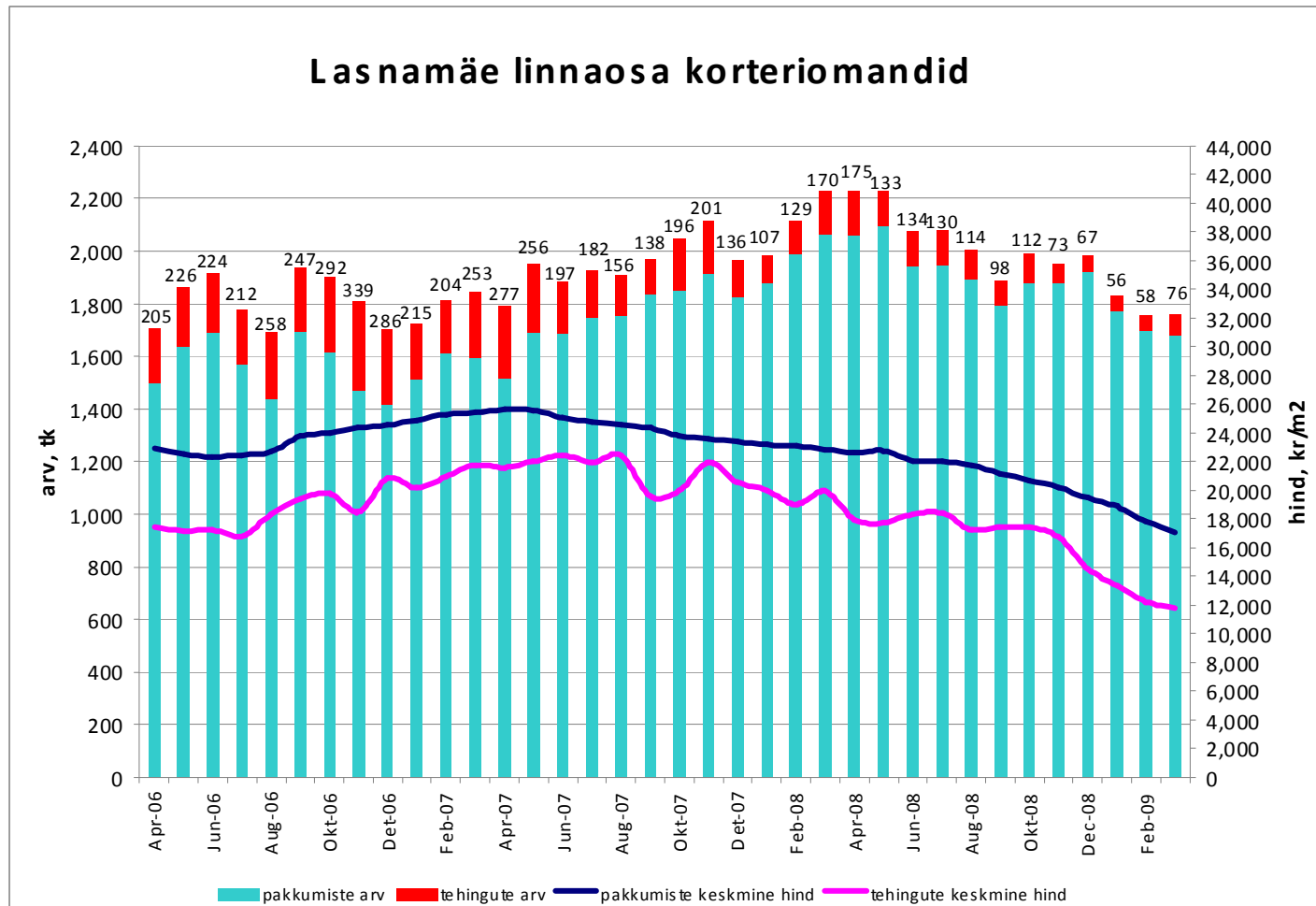
Tehingute arv on langenud 78%,  
tehinguhind 41%



Allikad: Maa-amet, City24

Tehingute arv on langenud 78%,  
tehinguhind 48%

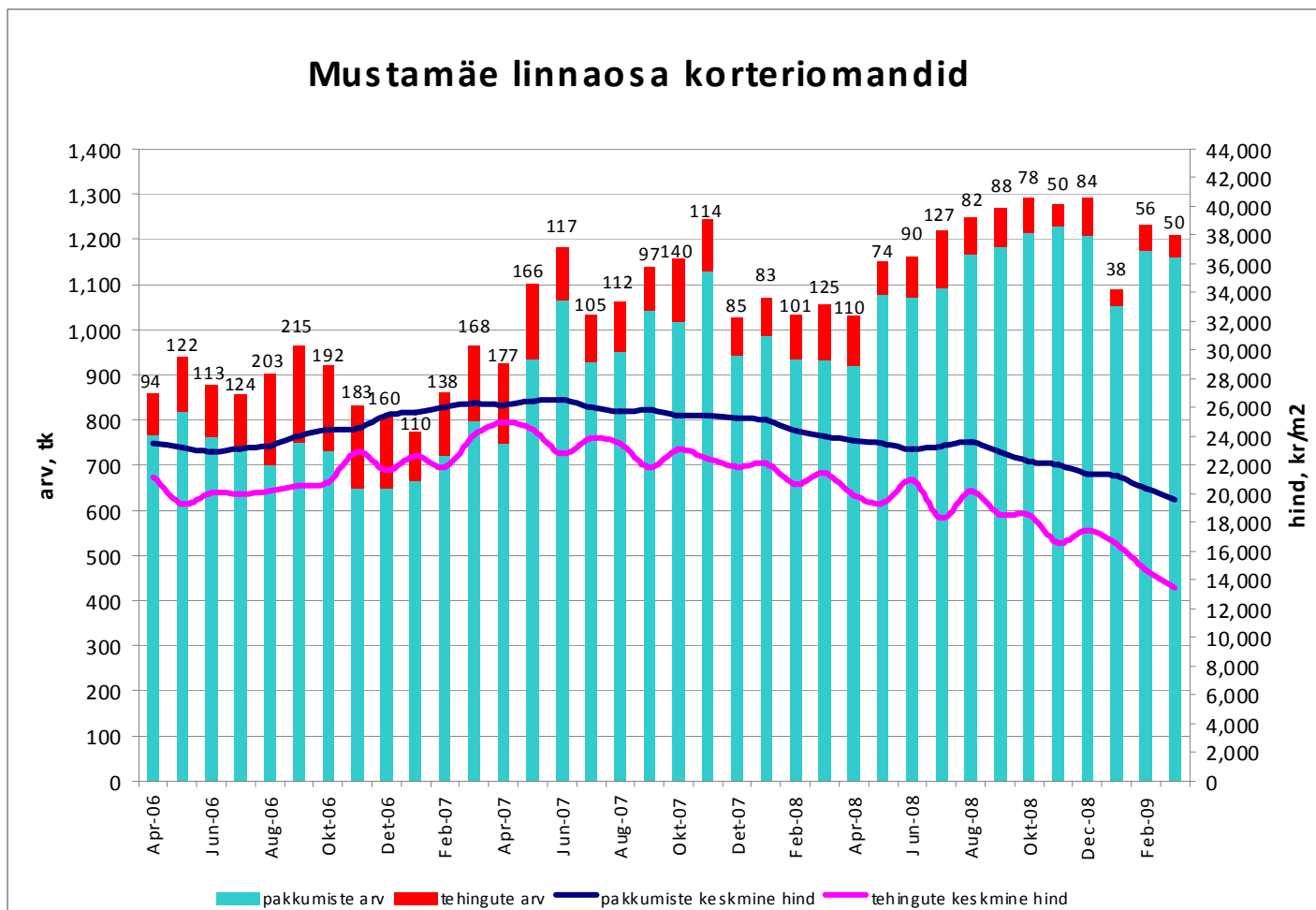
### Lasnamäe linnaosa korterimandid



Allikad: Maa-amet, City24

Tehingute arv on langenud 77%,  
tehinguhind 46%

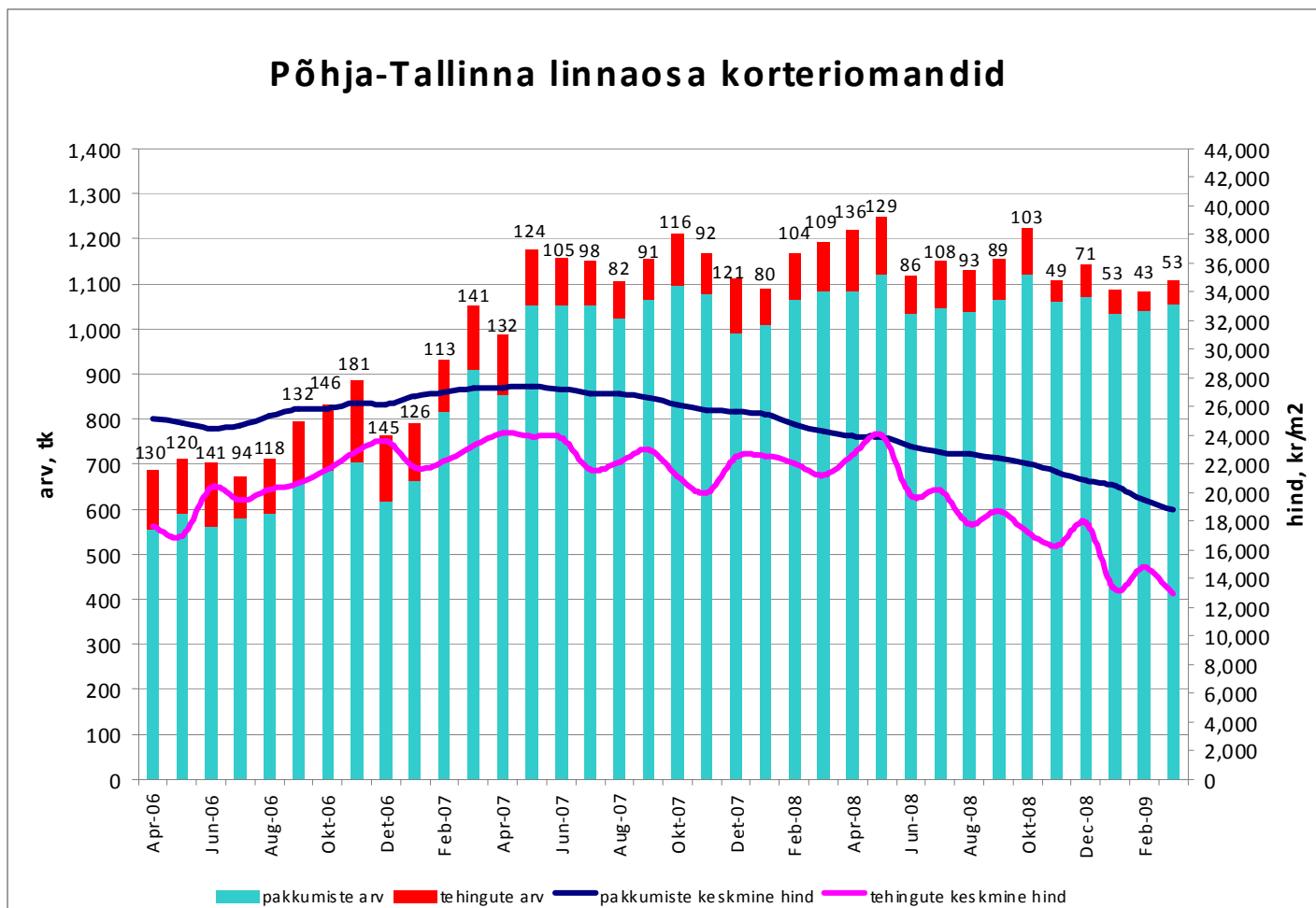
### Mustamäe linnaosa korterimandid



Allikad: Maa-amet, City24

Tehingute arv on langenud 71%,  
tehinguhind 47%

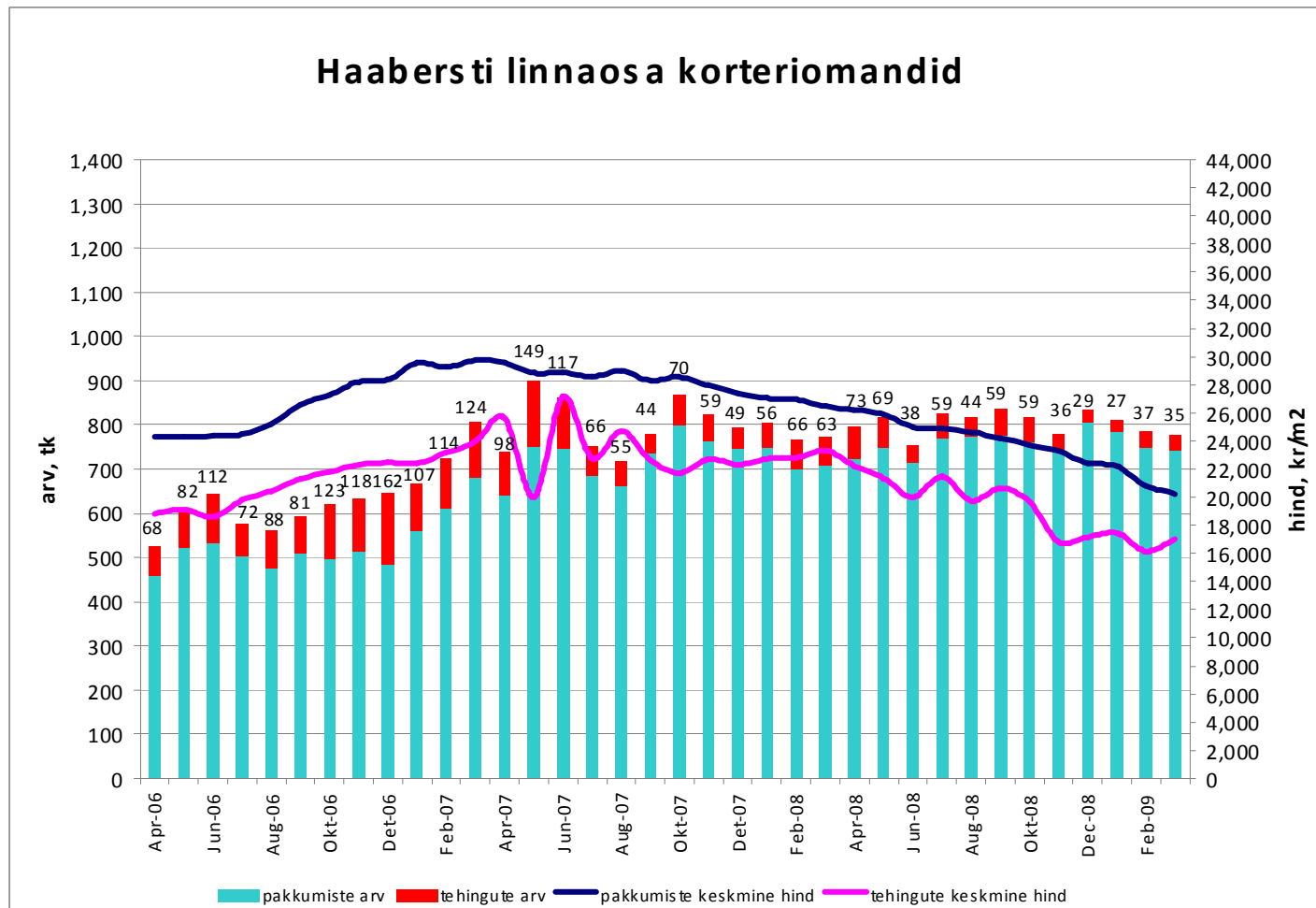
### Põhja-Tallinna linnaosa korteriomandid



Allikad: Maa-amet, City24

Tehingute arv on langenud 78%,  
tehinguhind 37%

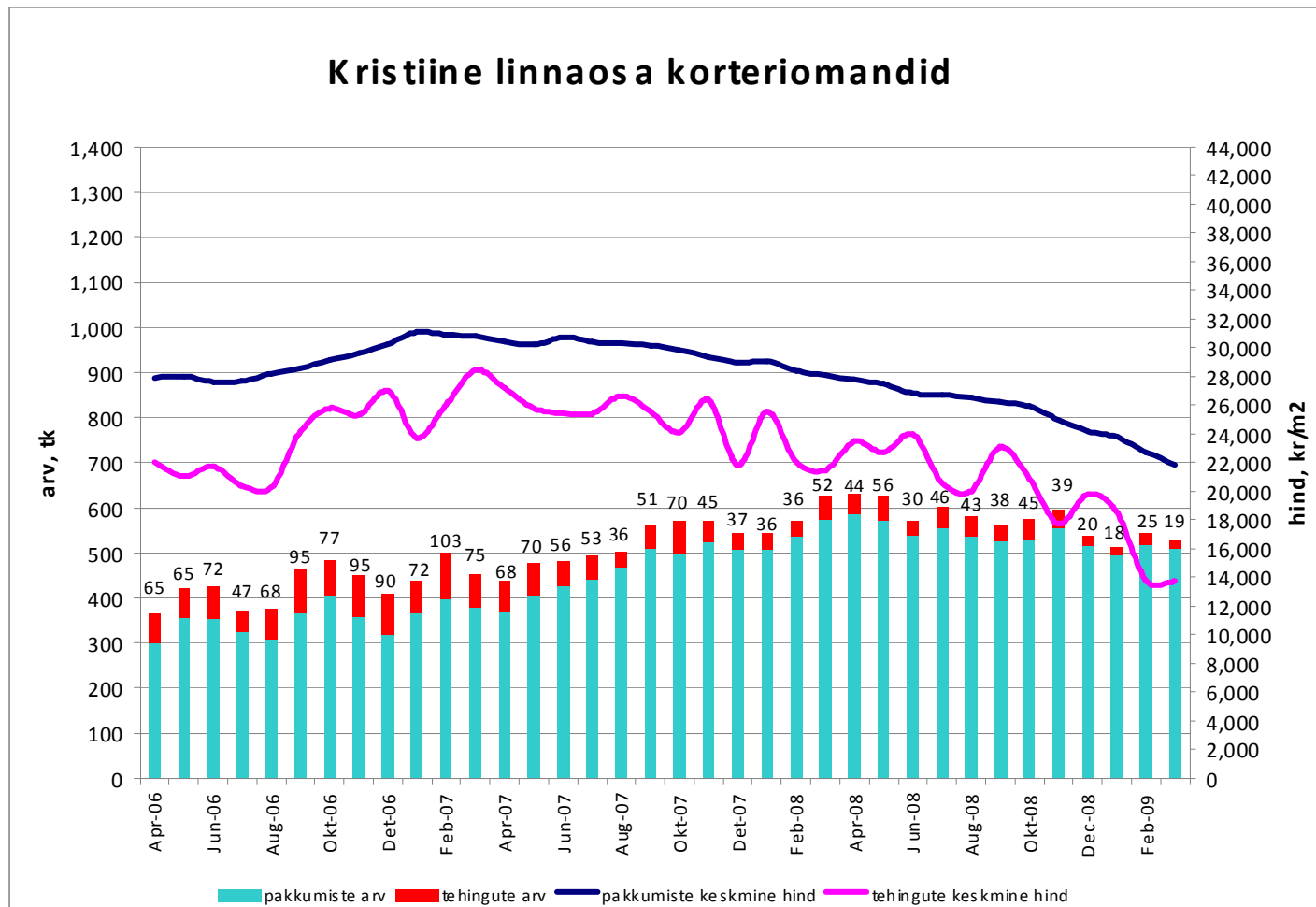
### Haabers ti linnaosa korterimandid



Allikad: Maa-amet, City24

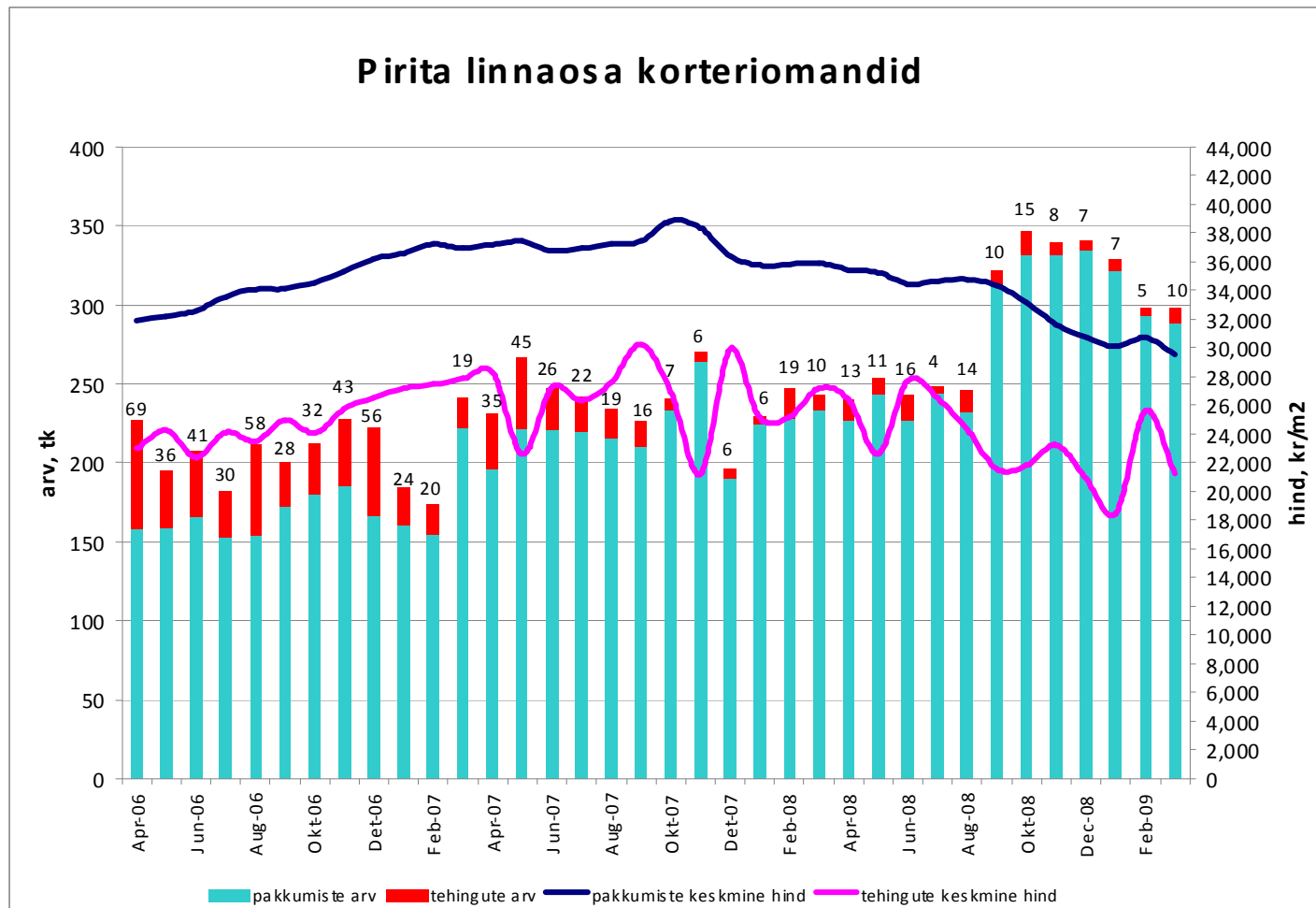
Tehingute arv on langenud 82%,  
tehinguhind 52%

### Kristiine linnaosa korteriomandid



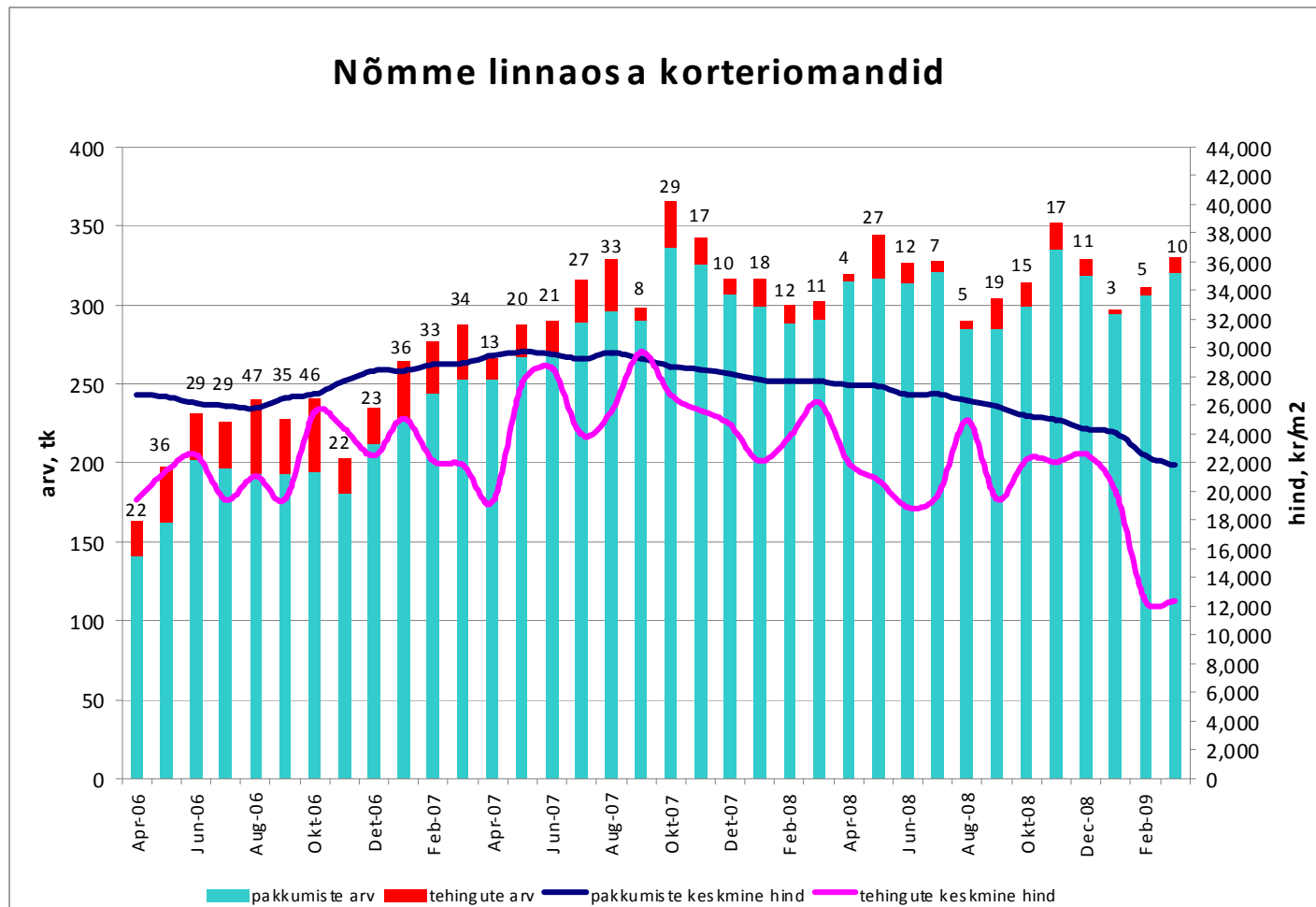
Allikad: Maa-amet, City24

Tehingute arv on langenud 86%,  
tehinguhind 30%



Allikad: Maa-amet, City24

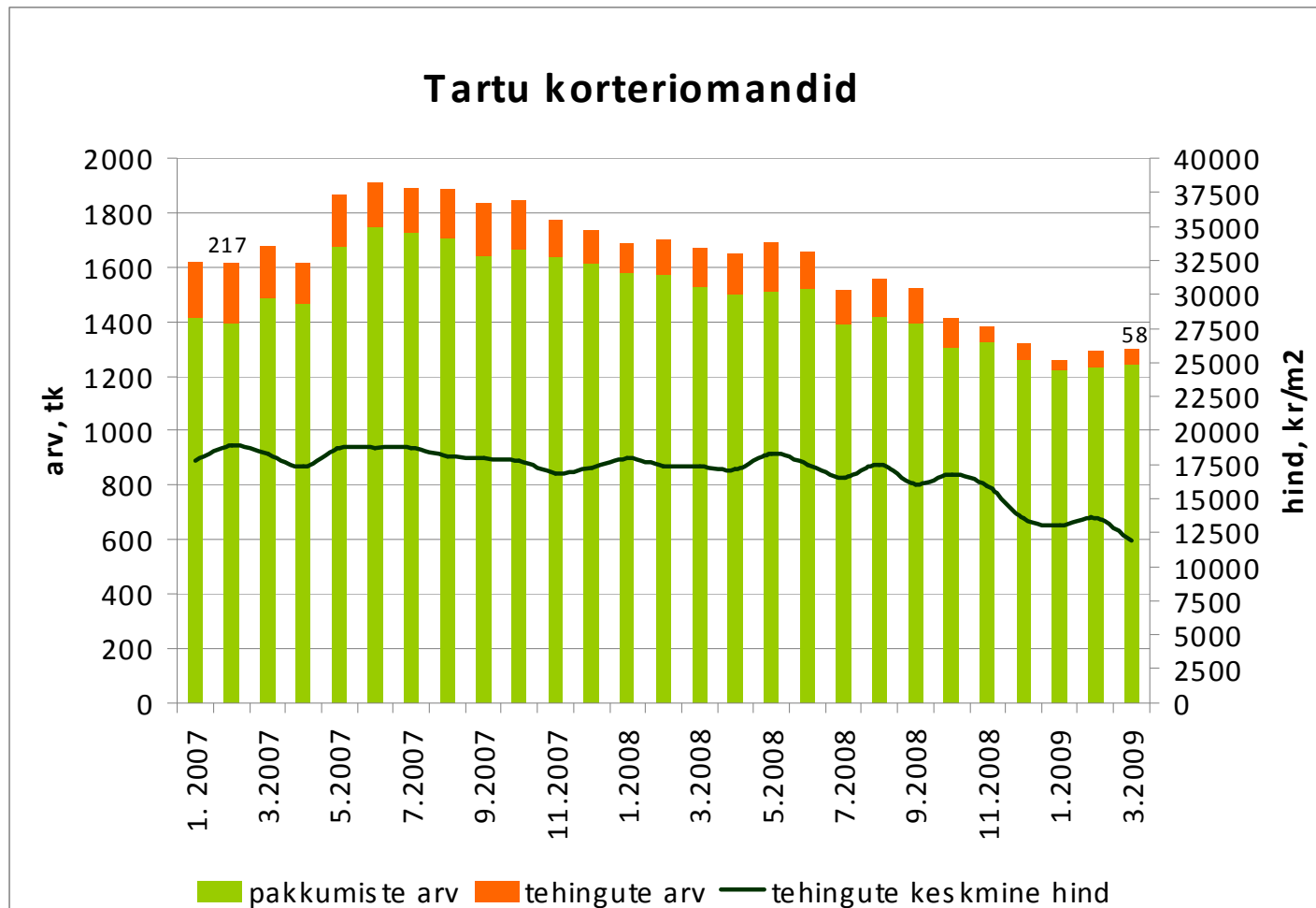
Tehingute arv on langenud 79%,  
tehinguhind 58%



Allikad: Maa-amet, City24

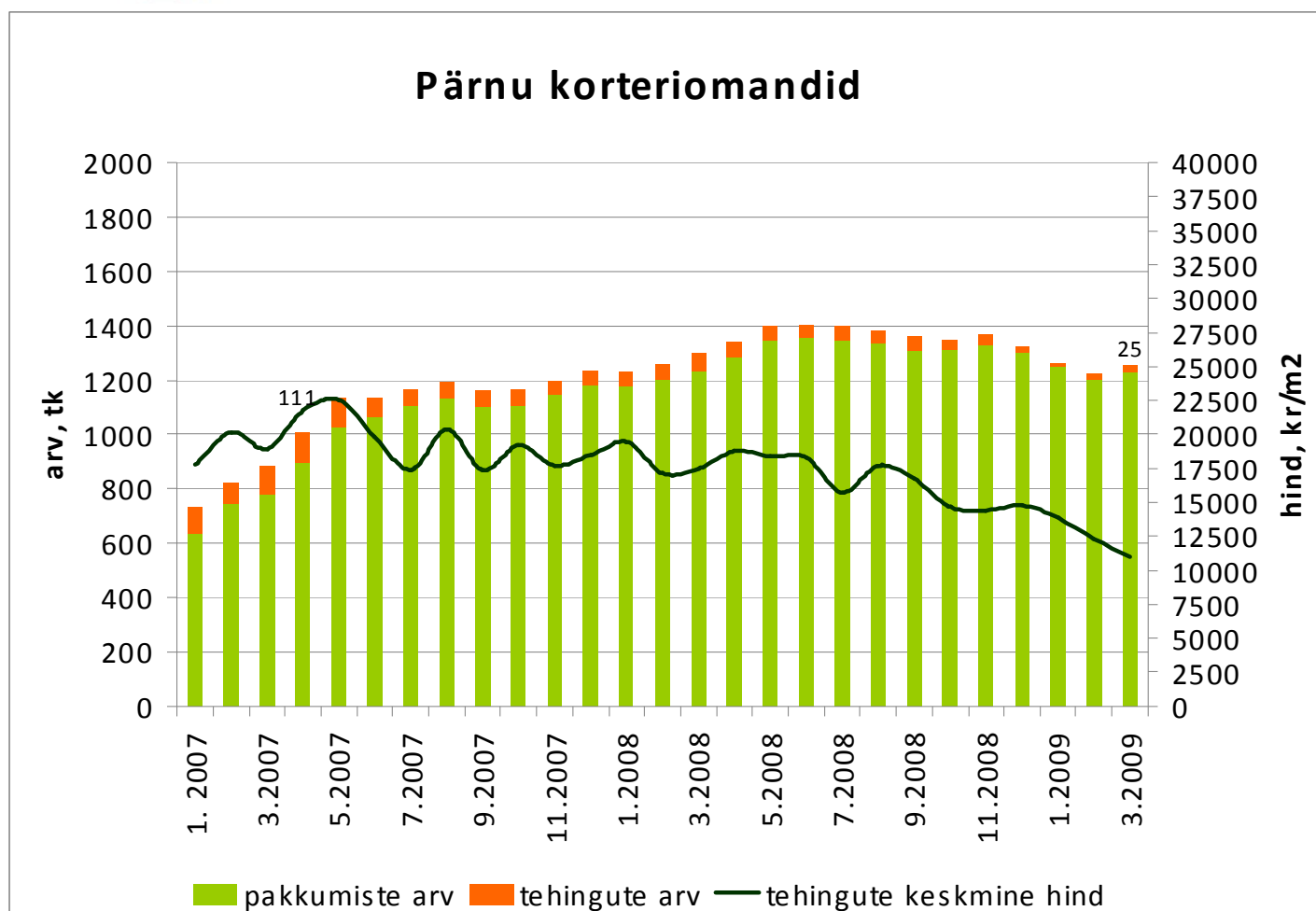


Tehingute arv on langenud 73%,  
tehinguhind 37%



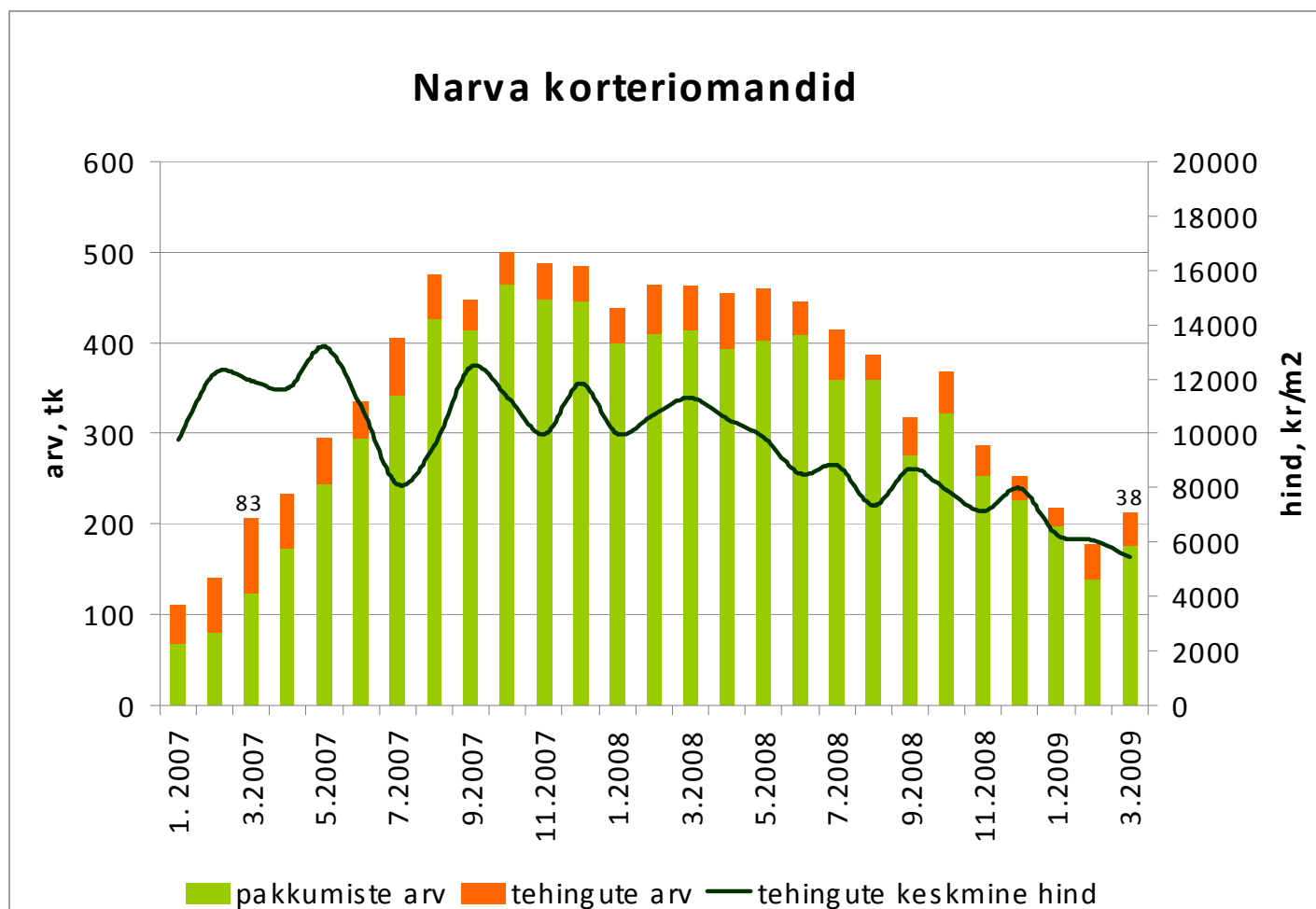
Allikad: Maa-amet, City24

Tehingute arv on langenud 77%,  
tehinguhind 51%



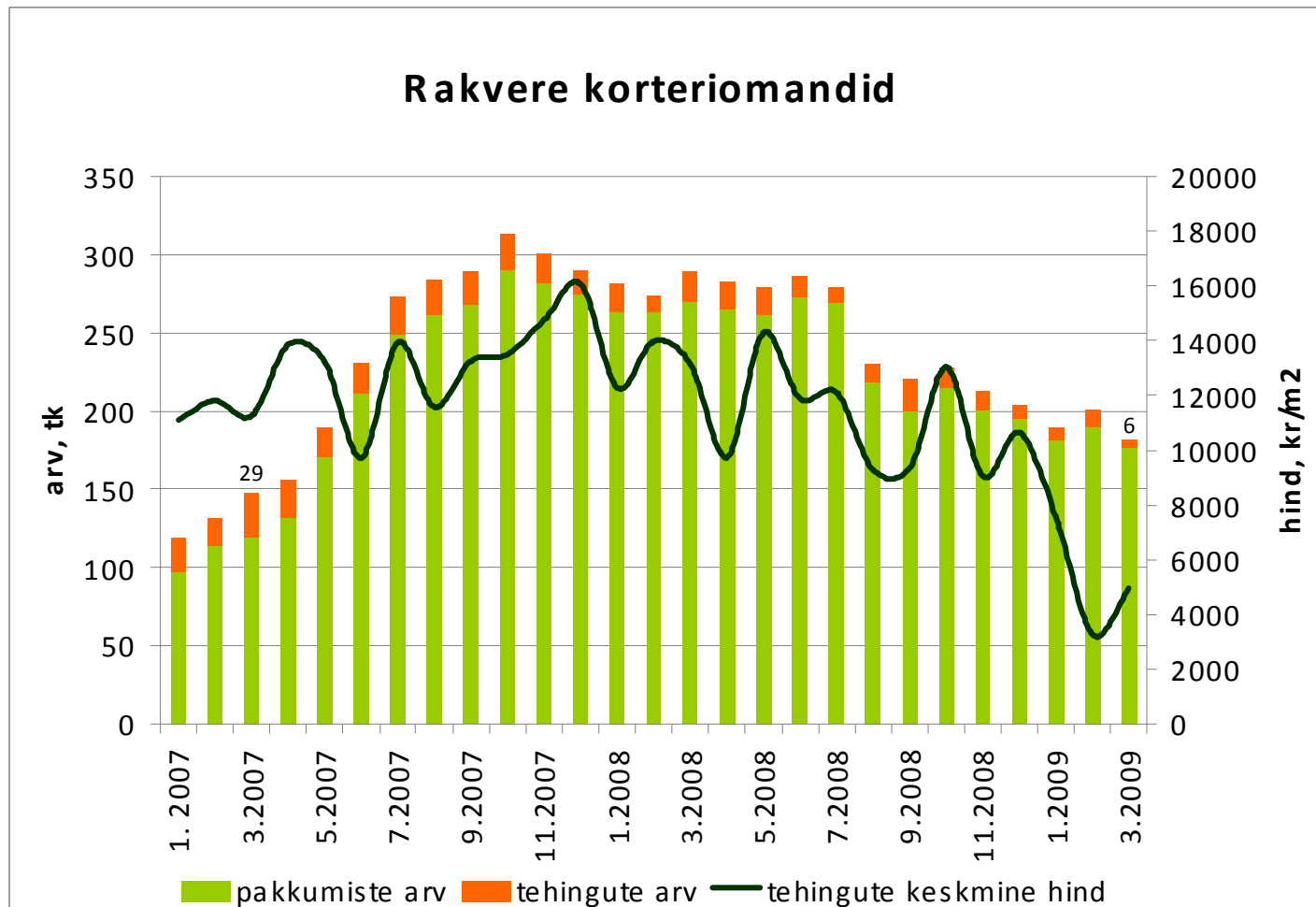
Allikad: Maa-amet, City24

Tehingute arv on langenud 54%,  
tehinguhind 59%



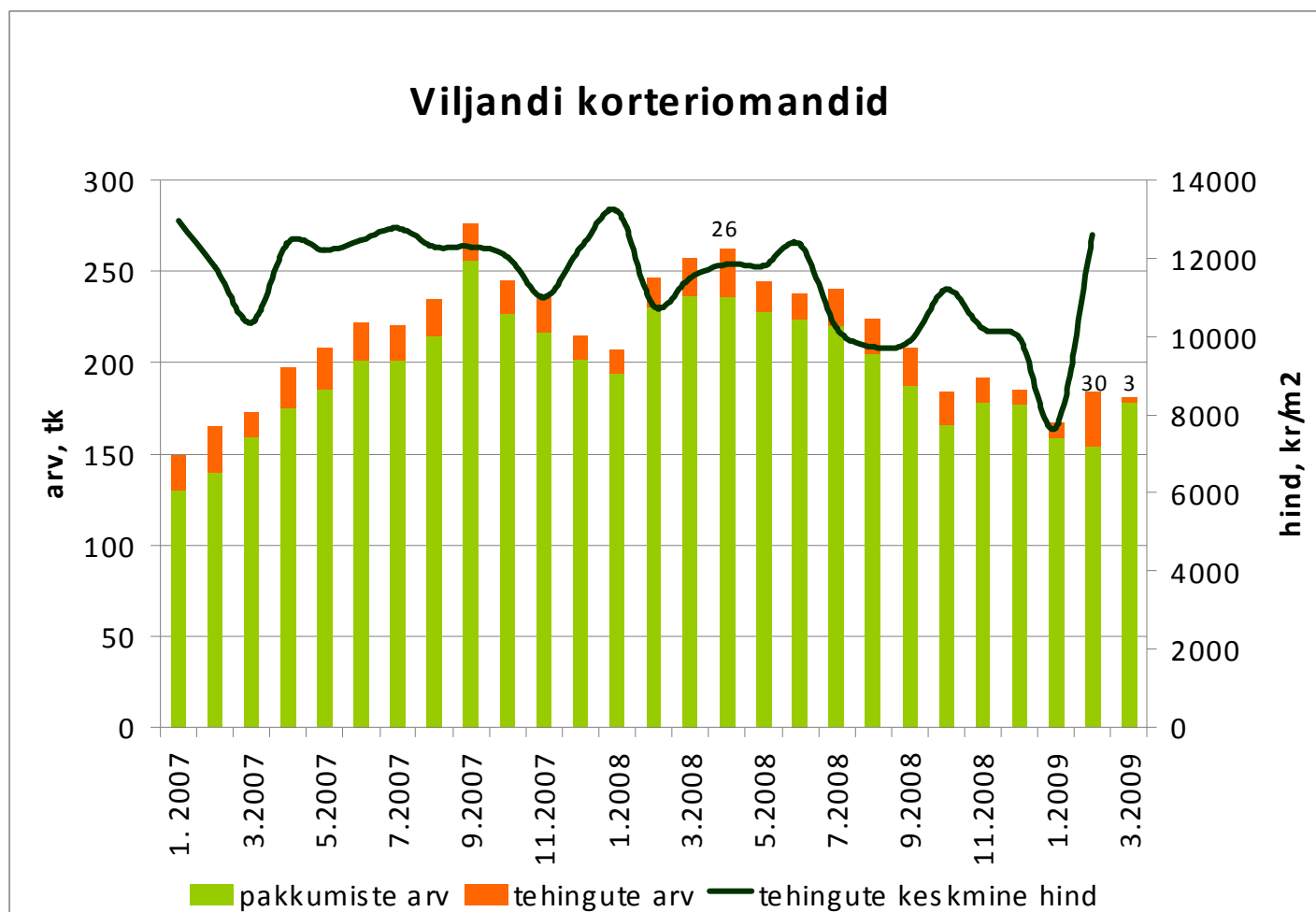
Allikad: Maa-amet, City24

Tehingute arv on langenud 79%,  
tehinguhind 69%



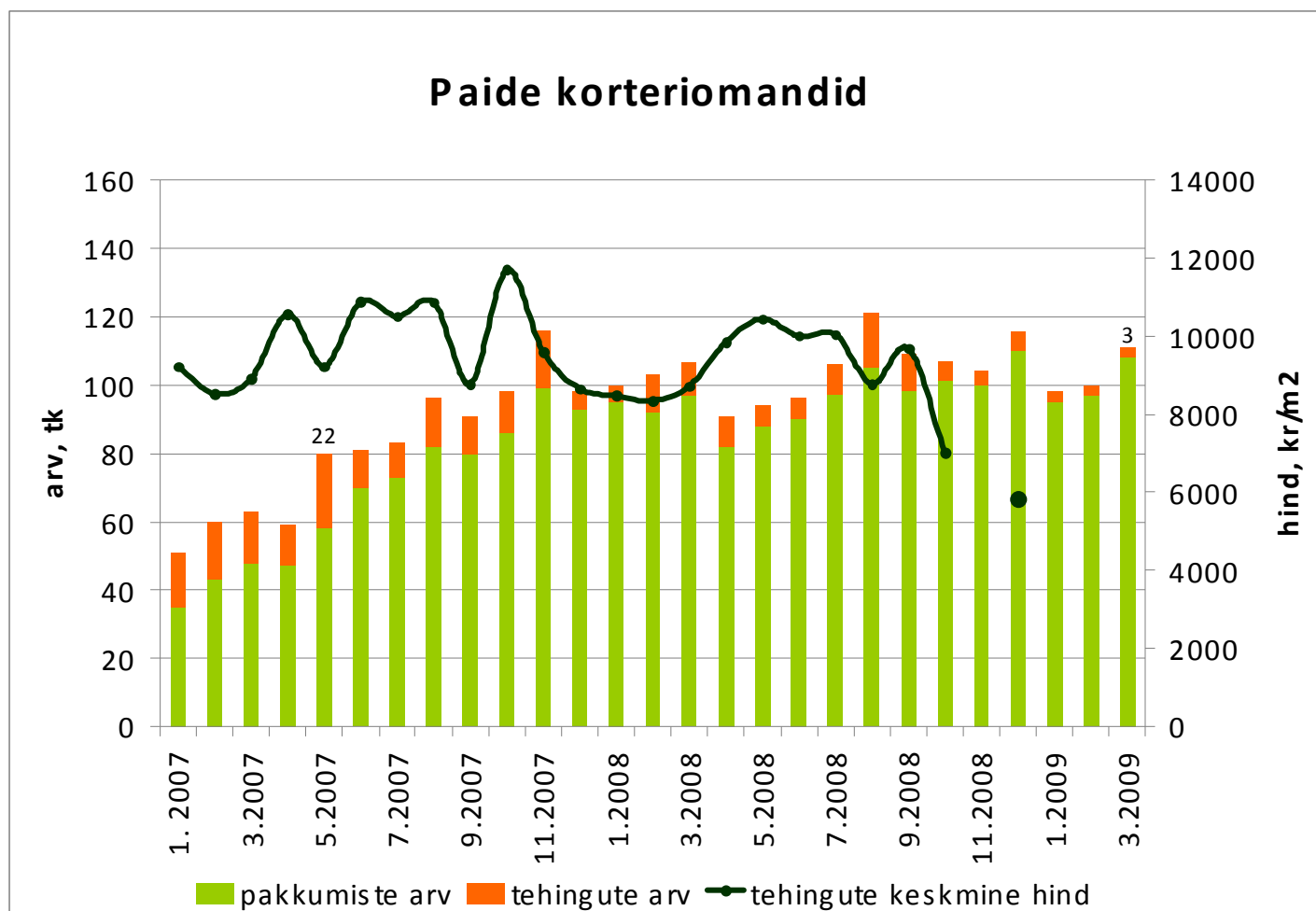
Allikad: Maa-amet, City24

Tehingute arv on langenud 88%



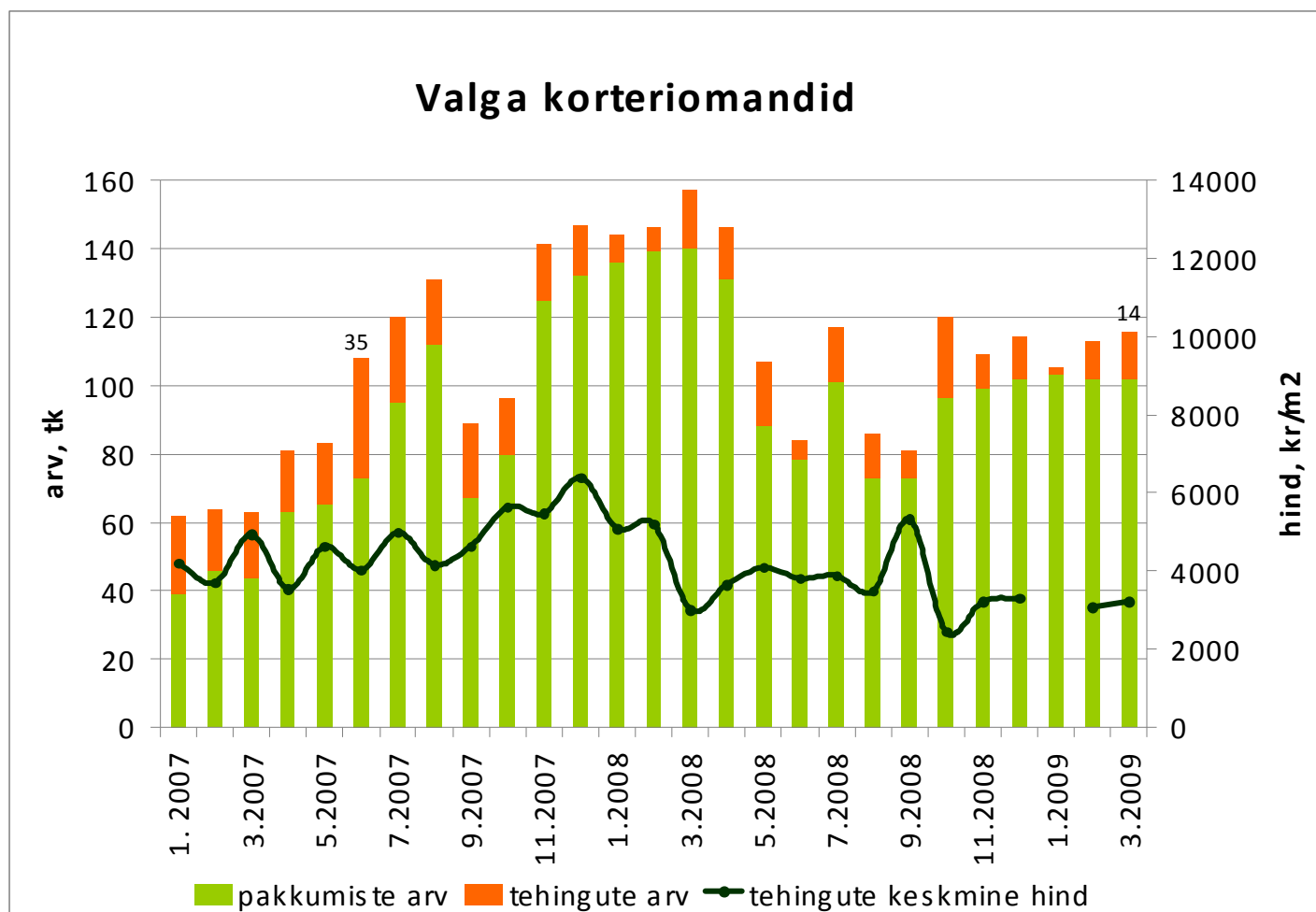
Allikad: Maa-amet, City24

Tehingute arv on langenud 86%,  
tehinguhind ca 50%



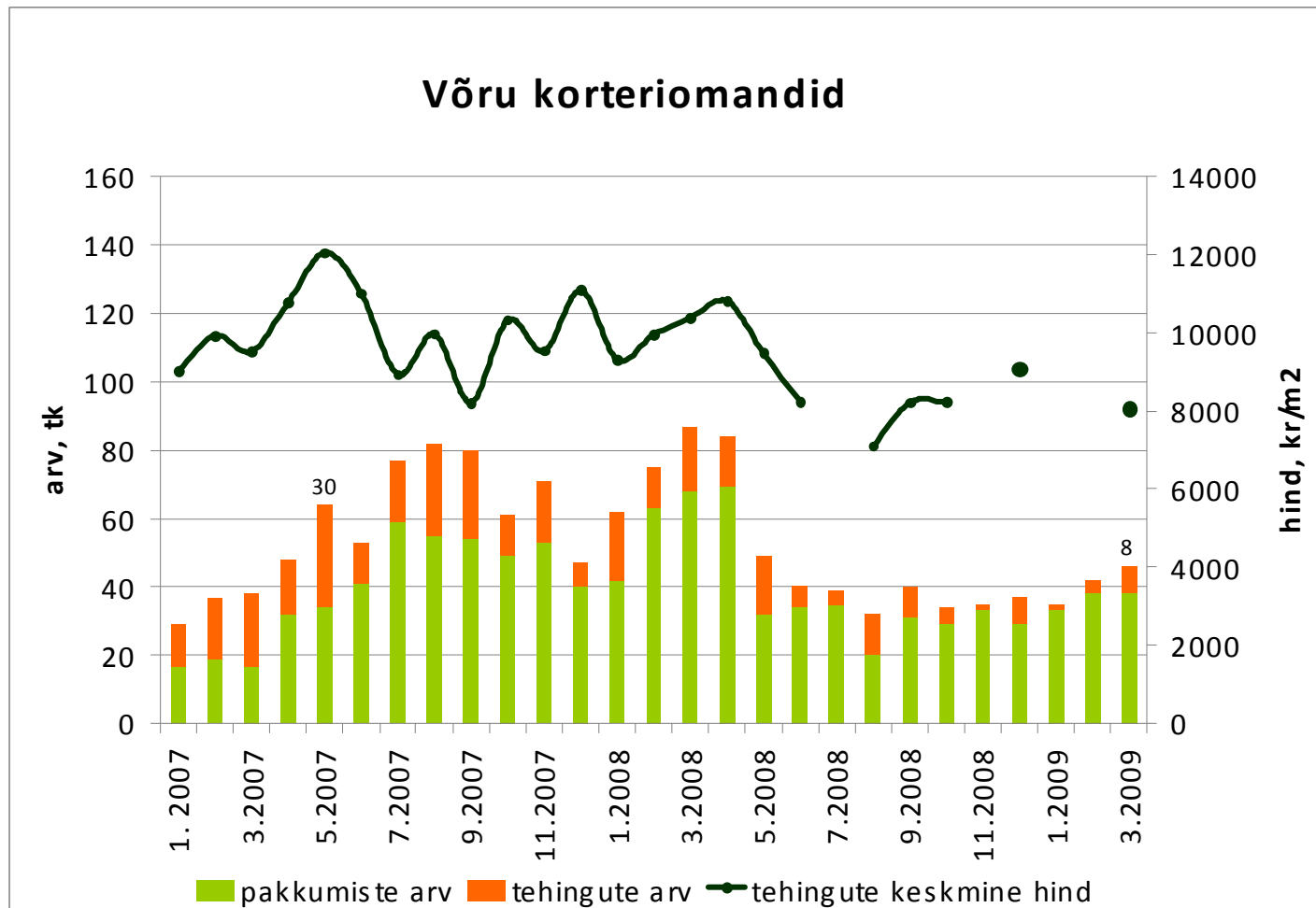
Allikad: Maa-amet, City24

Tehingute arv on langenud 60%  
tehinguhind 50%



Allikad: Maa-amet, City24

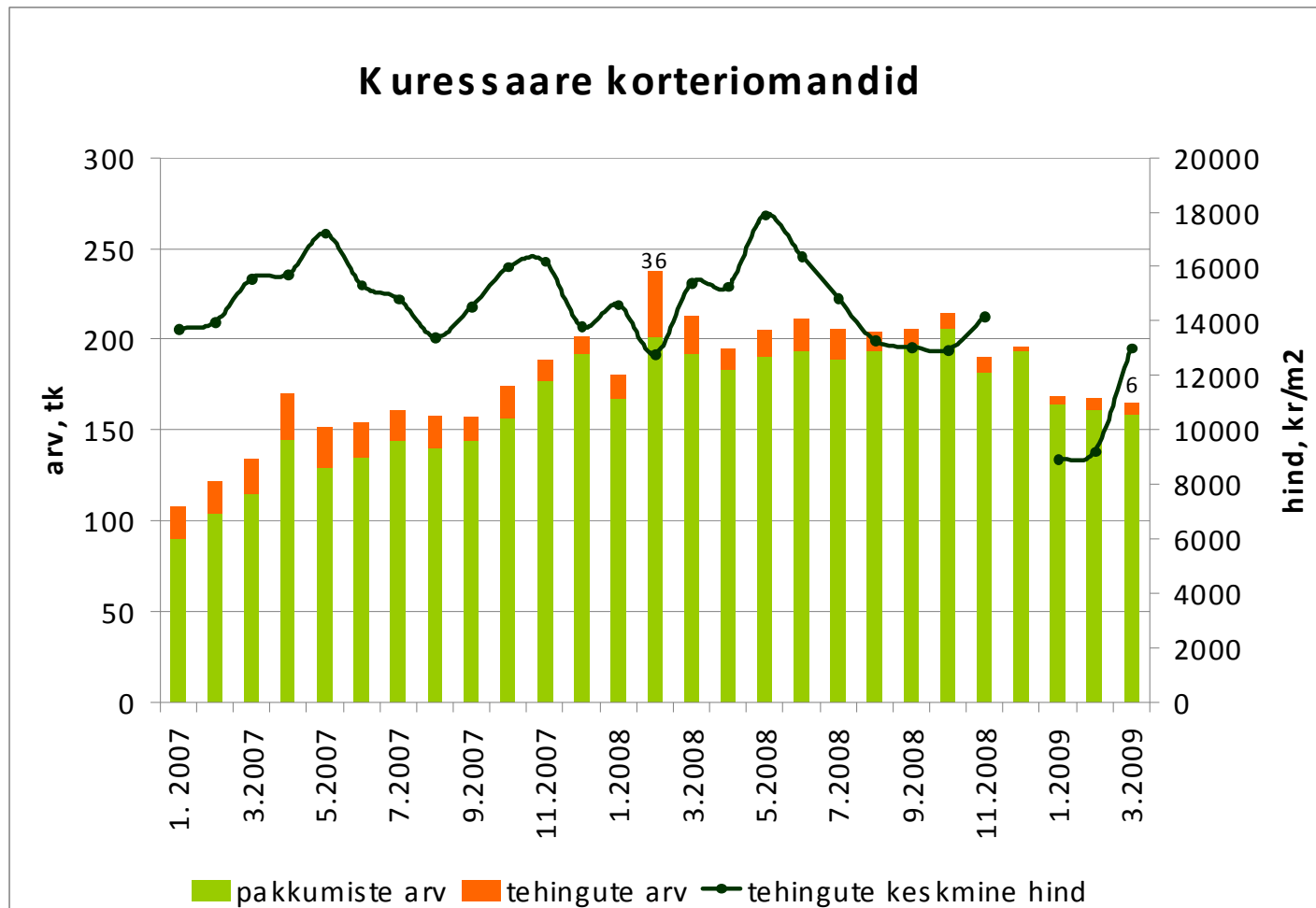
Tehingute arv on langenud 73%  
tehinguhind 33%



Allikad: Maa-amet, City24

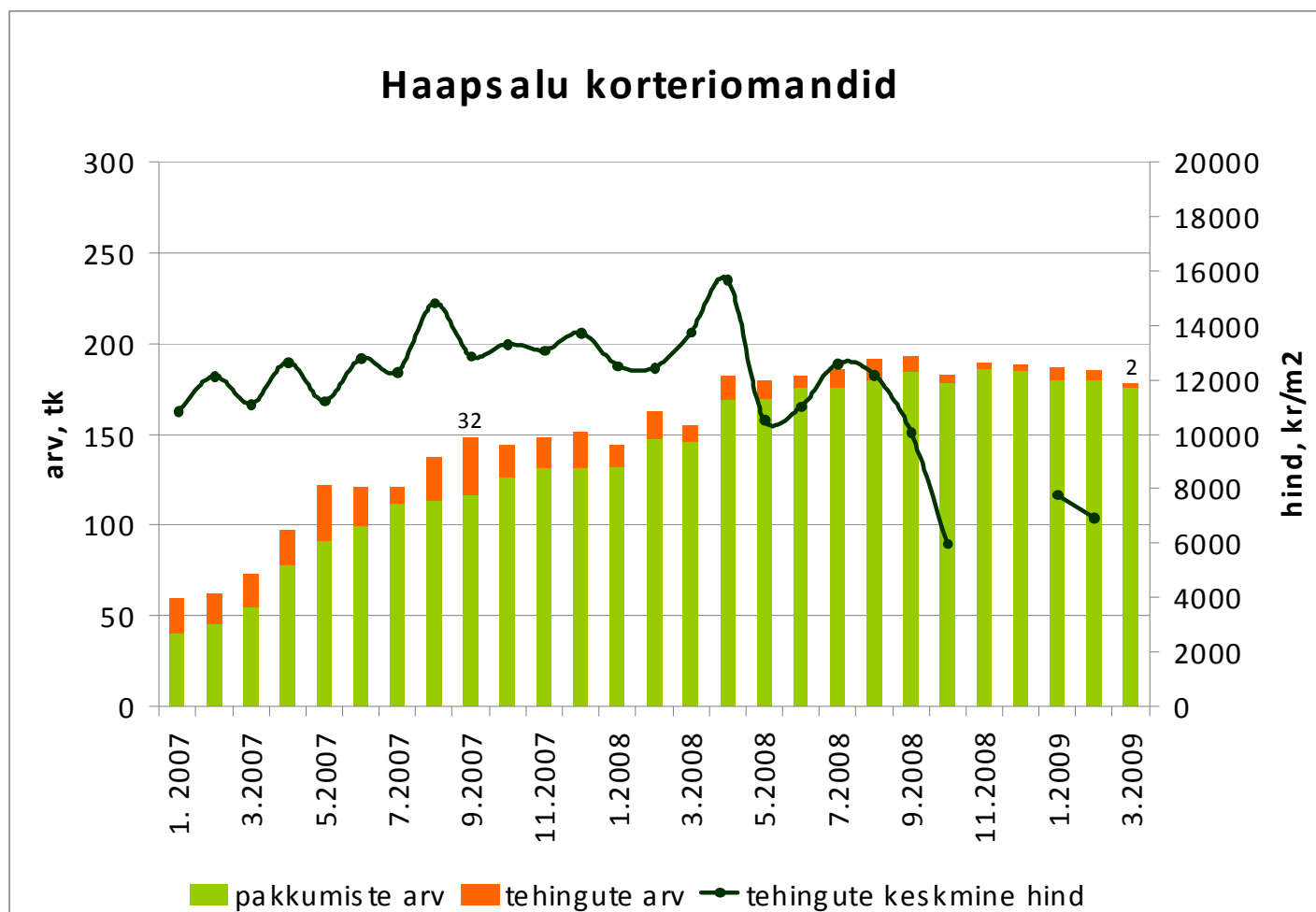


Tehingute arv on langenud 84%  
tehinguhind 27%



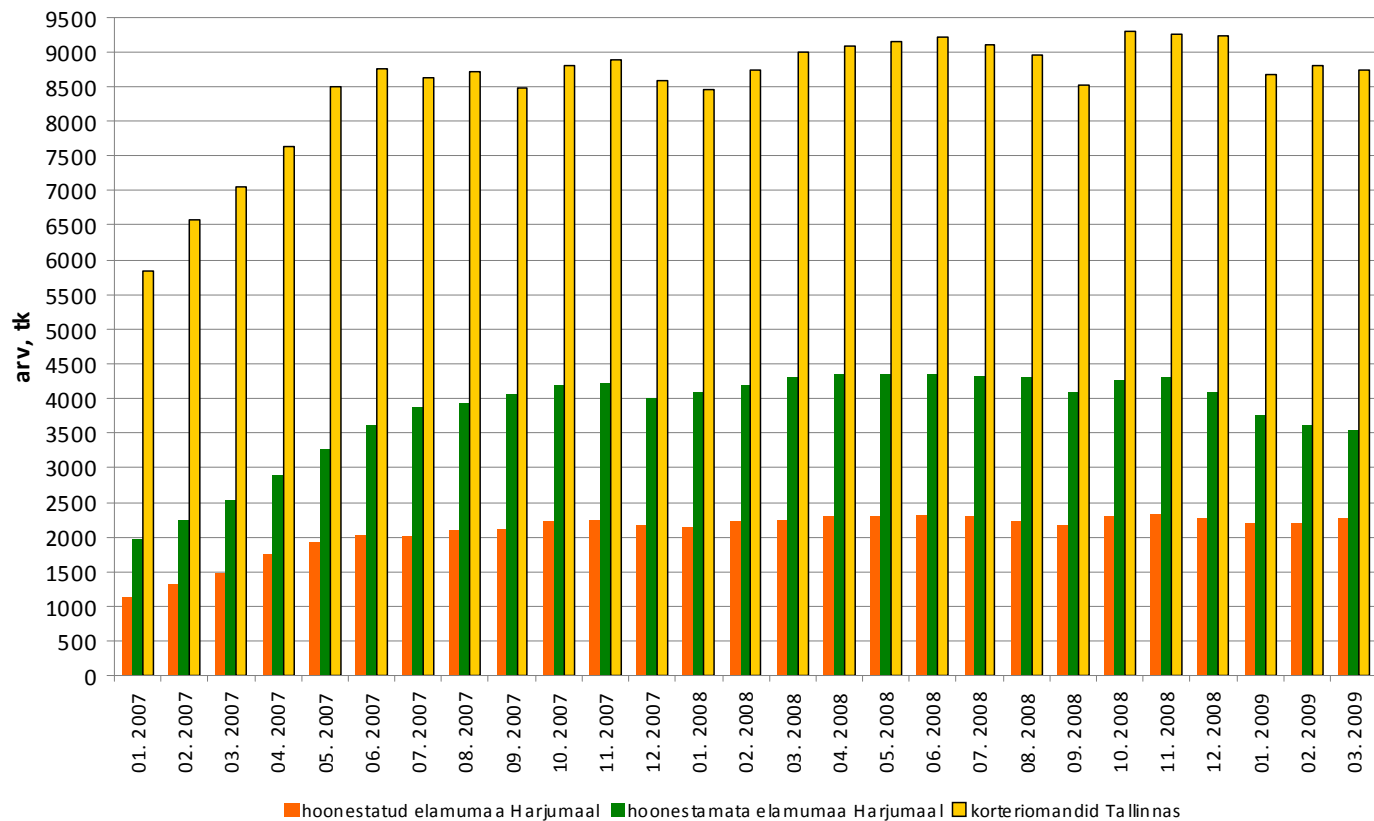
Allikad: Maa-amet, City24

Tehingute arv on langenud 94%  
tehinguhind ca 56%



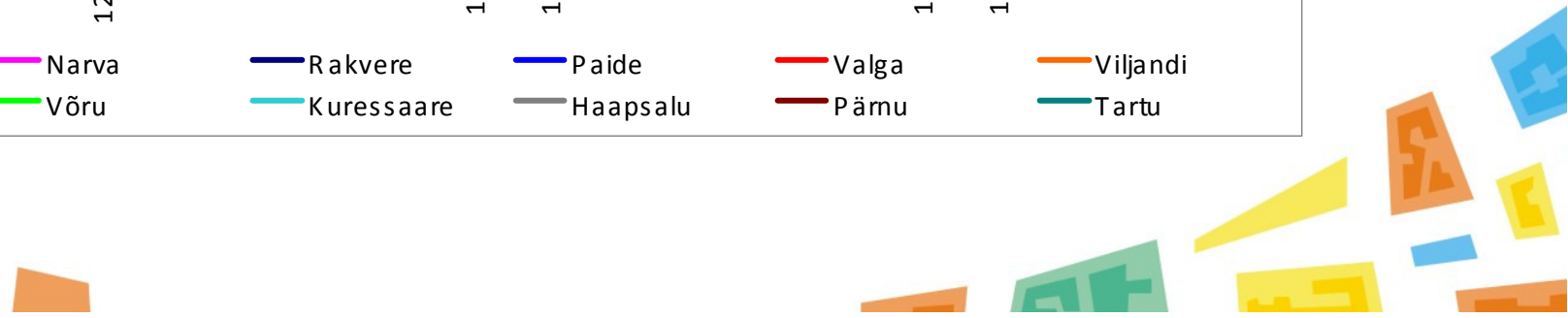
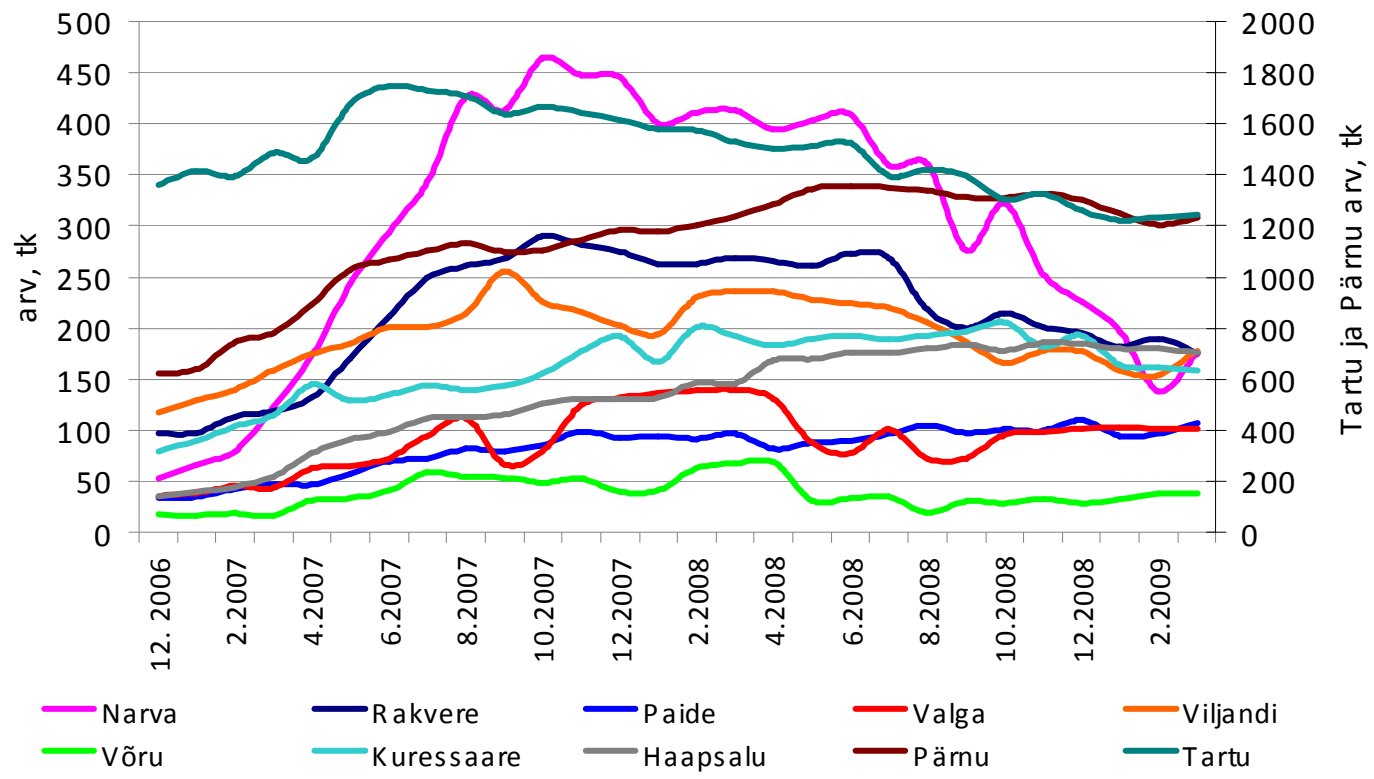
Allikad: Maa-amet, City24

## E lukondliku kinnisvara pakkumiste arv

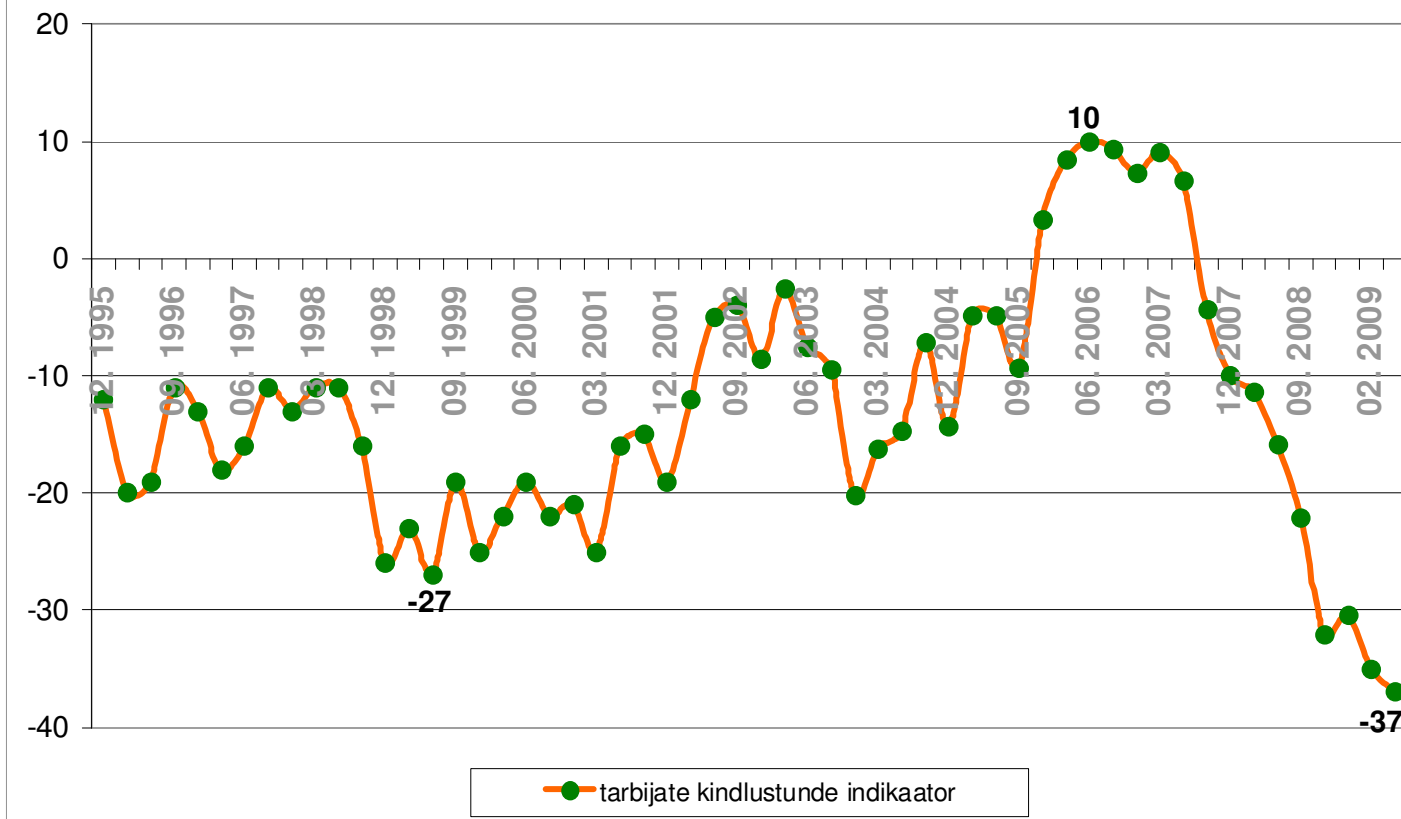




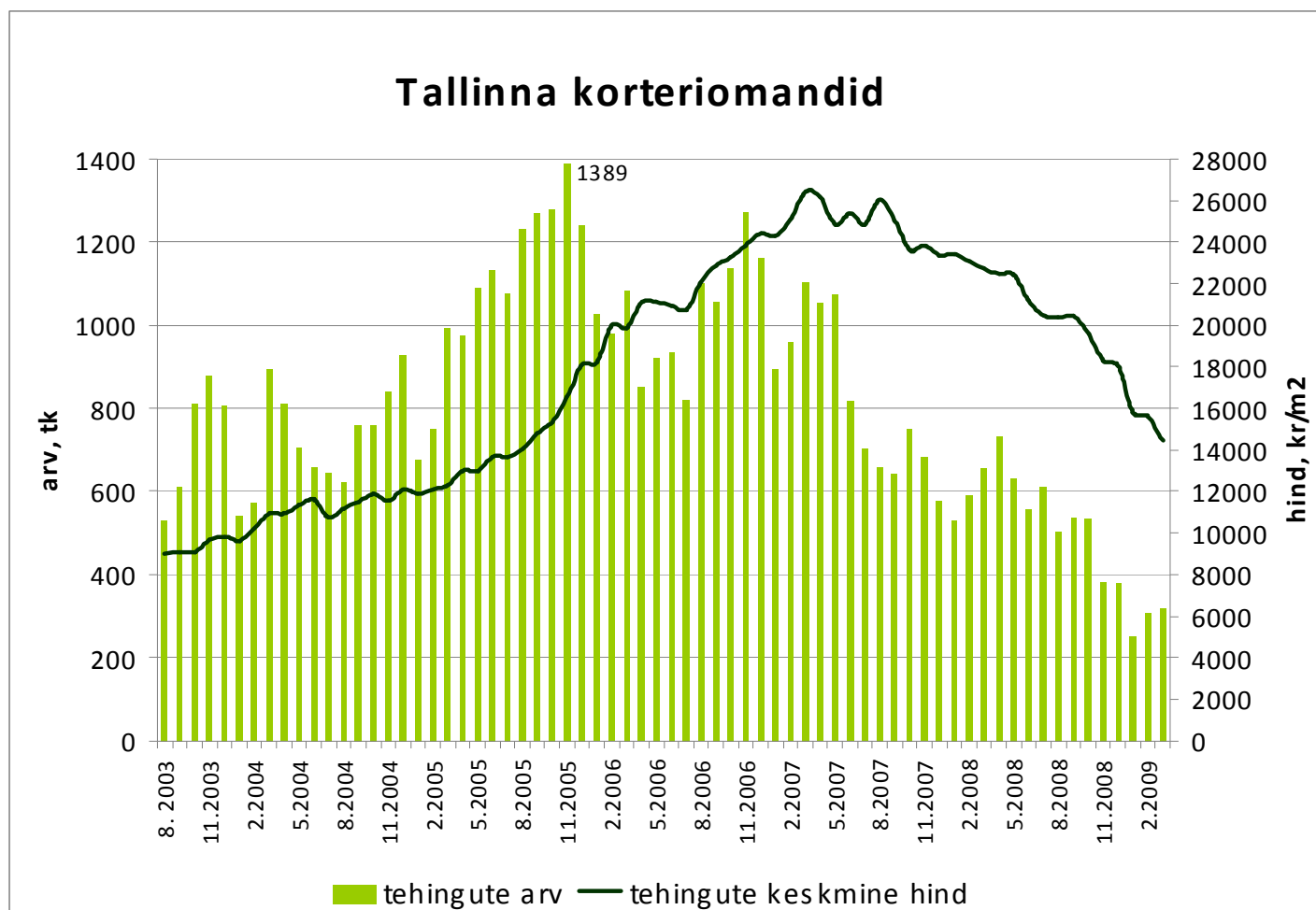
### Korteriomandite pakkumiste arv Eesti linnades (City24 baasil)



## Tarbijate kindlustunde indikaator

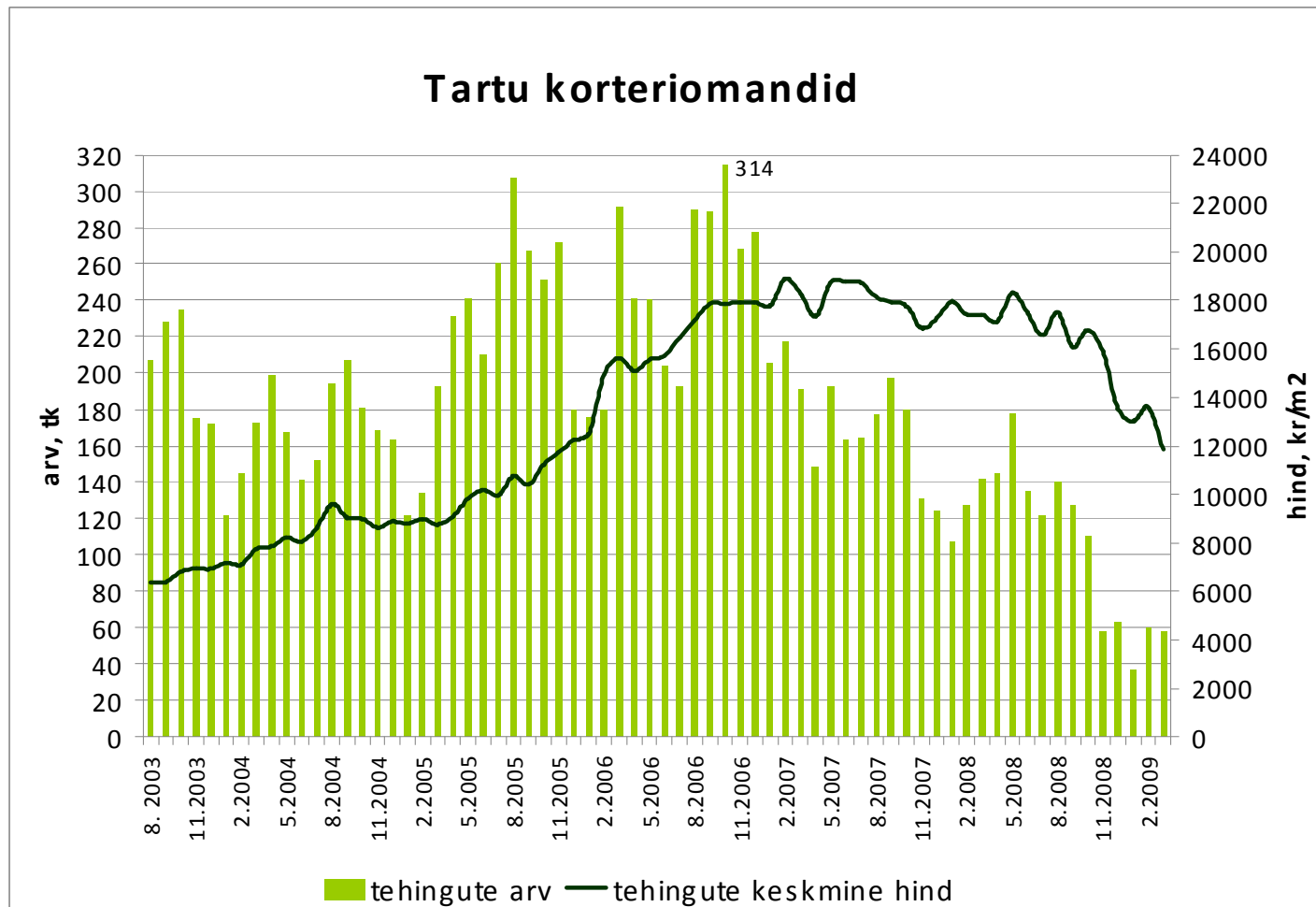


Tehingute arv on langenud 77%,  
tehinguhind 45%



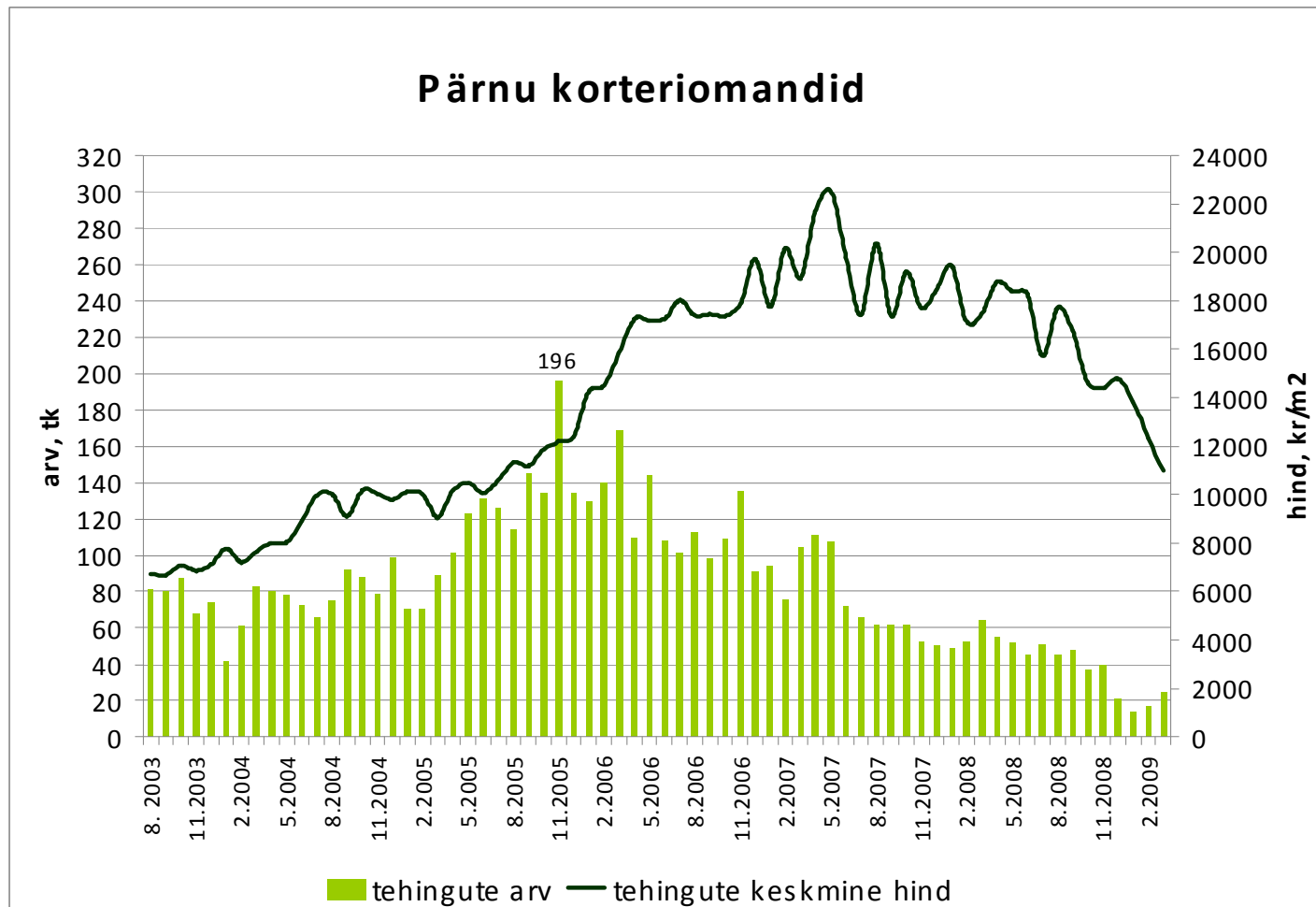
Allikas: Maa-amet

Tehingute arv on langenud 82%,  
tehinguhind 37%



Allikas: Maa-amet

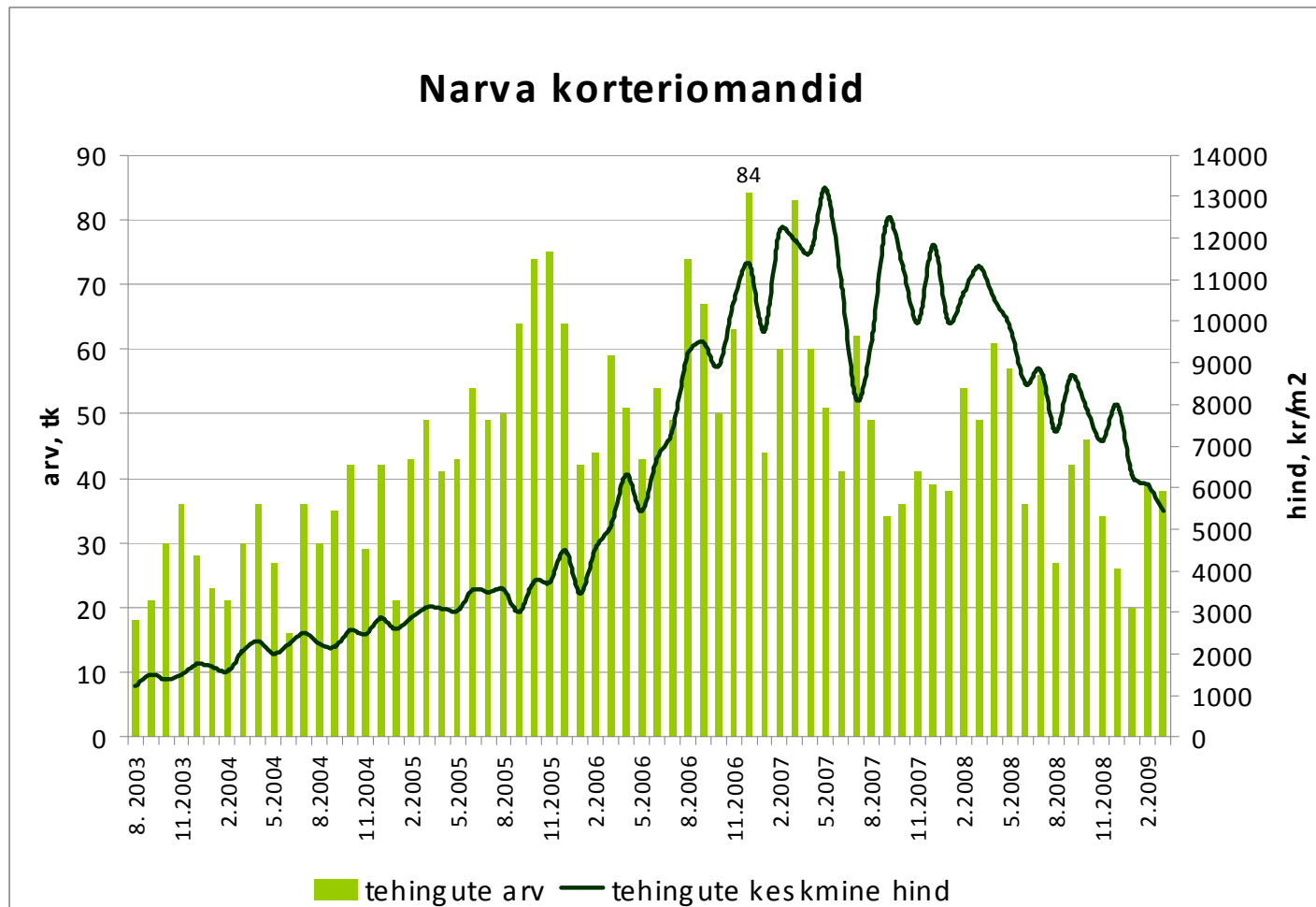
Tehingute arv on langenud 87%,  
tehinguhind 51%



Allikas: Maa-amet

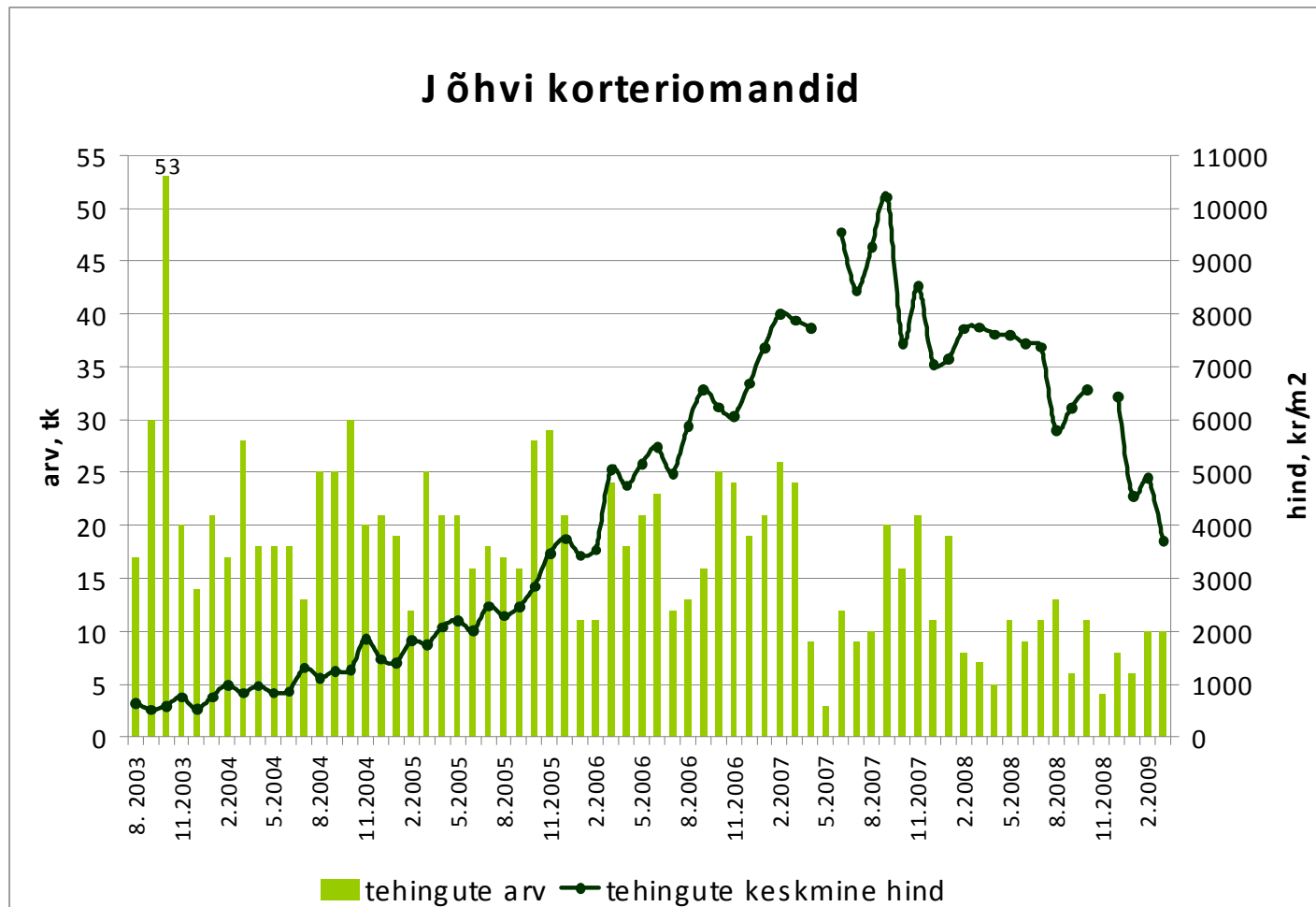


Tehingute arv on langenud 54%,  
tehinguhind 59 %



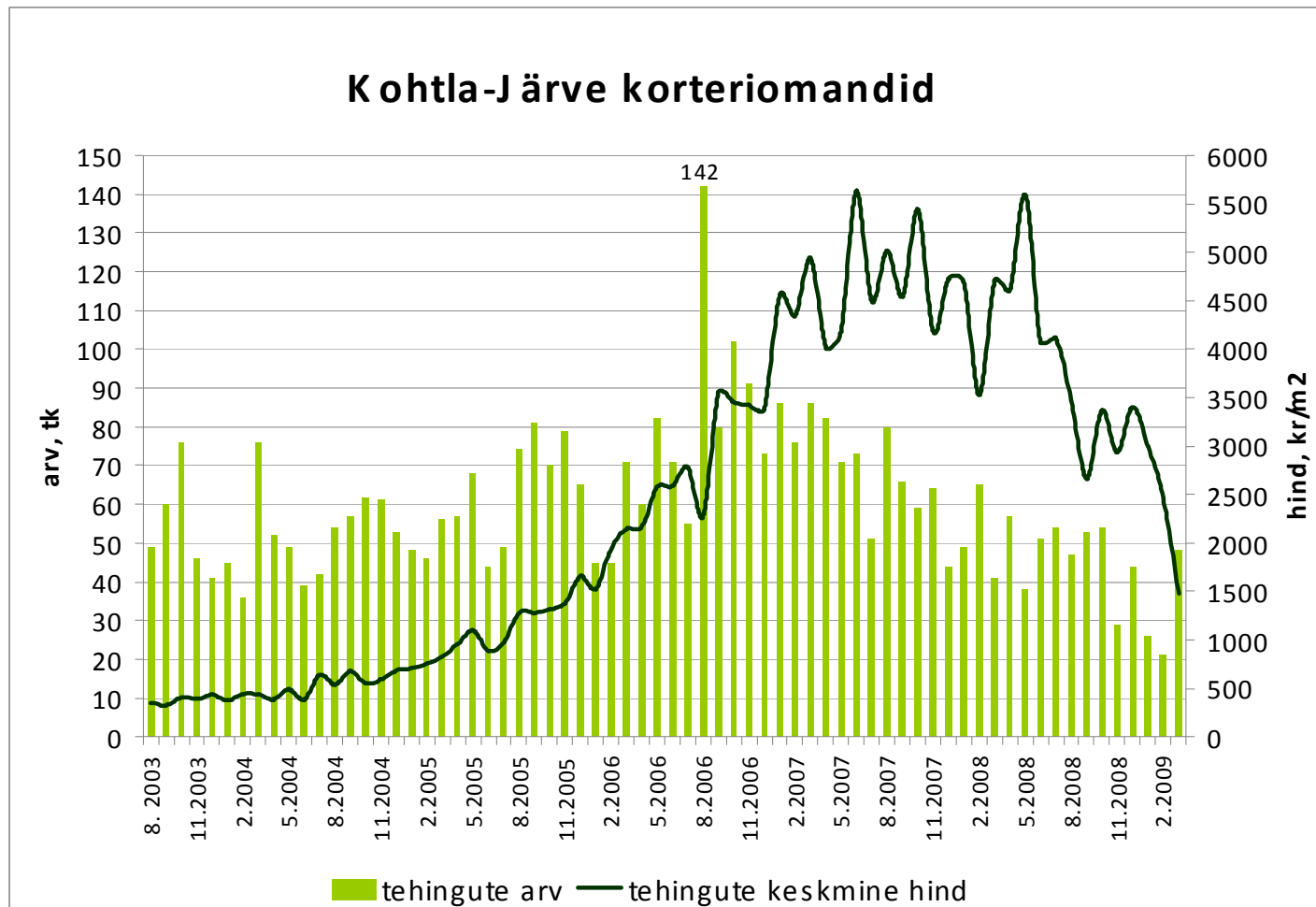
Allikas: Maa-amet

Tehingute arv on langenud 81%,  
tehinguhind 64%



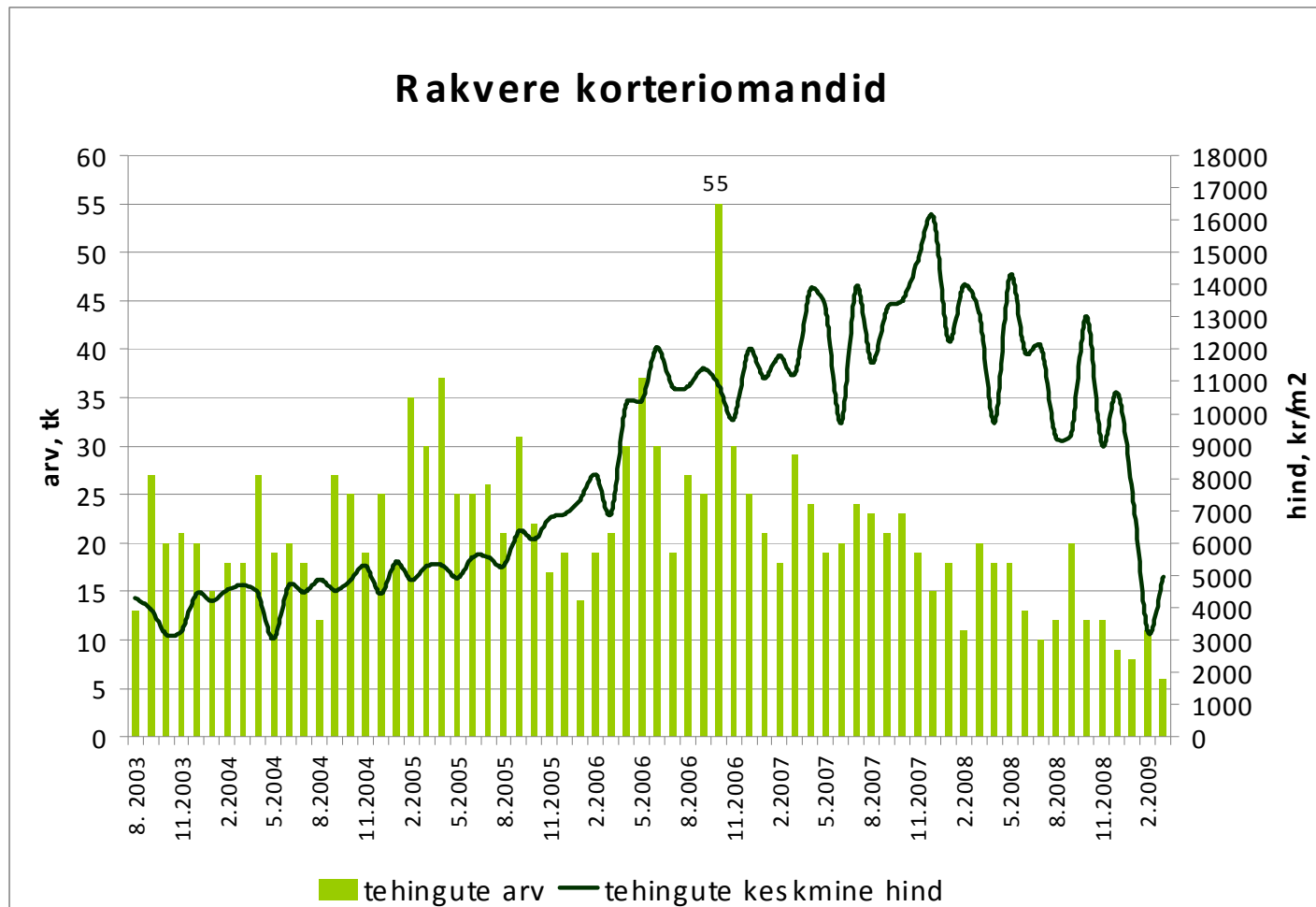
Allikas: Maa-amet

Tehingute arv on langenud 66%,  
tehinguhind 74%



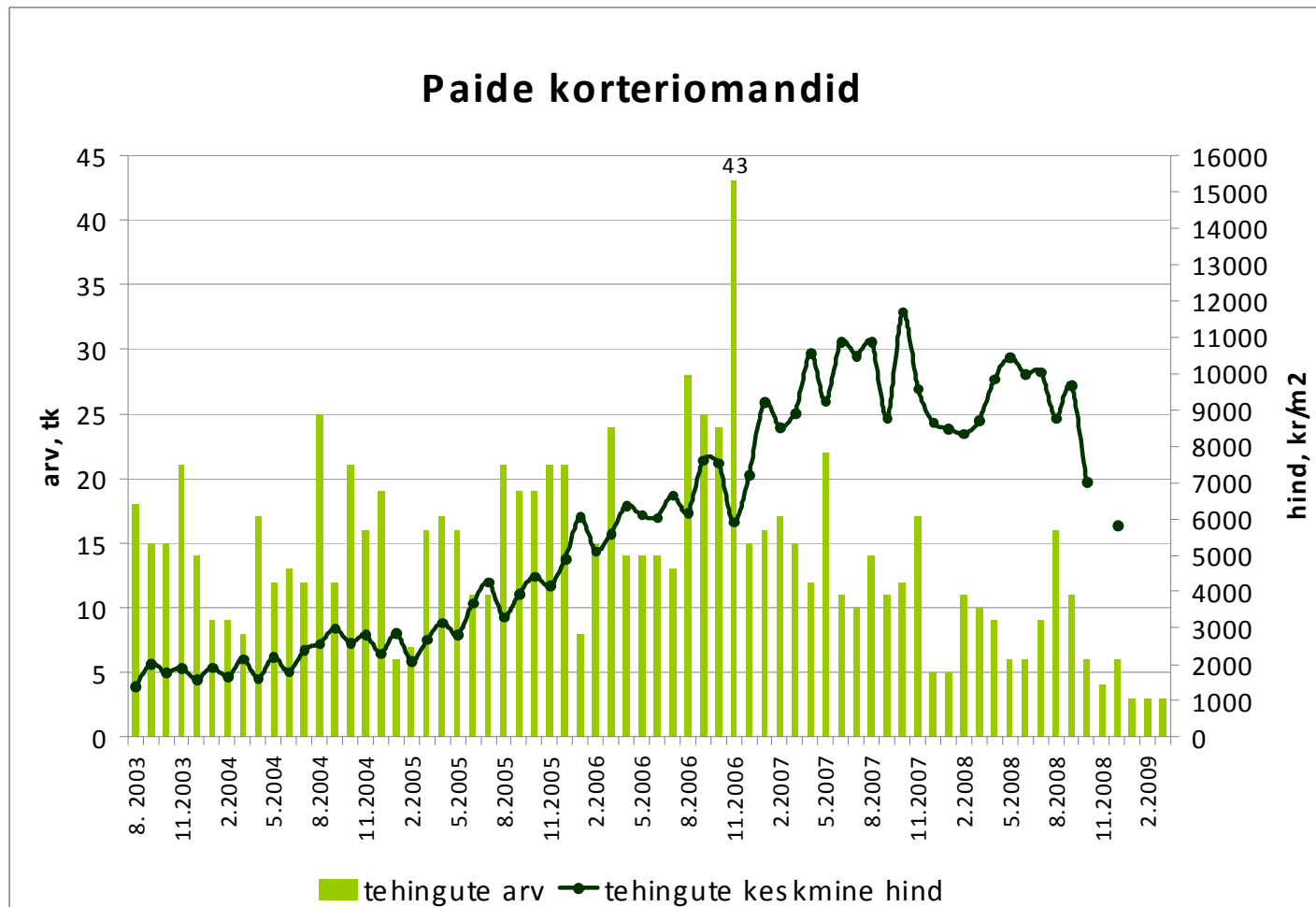
Allikas: Maa-amet

Tehingute arv on langenud 89%,  
tehinguhind 69%



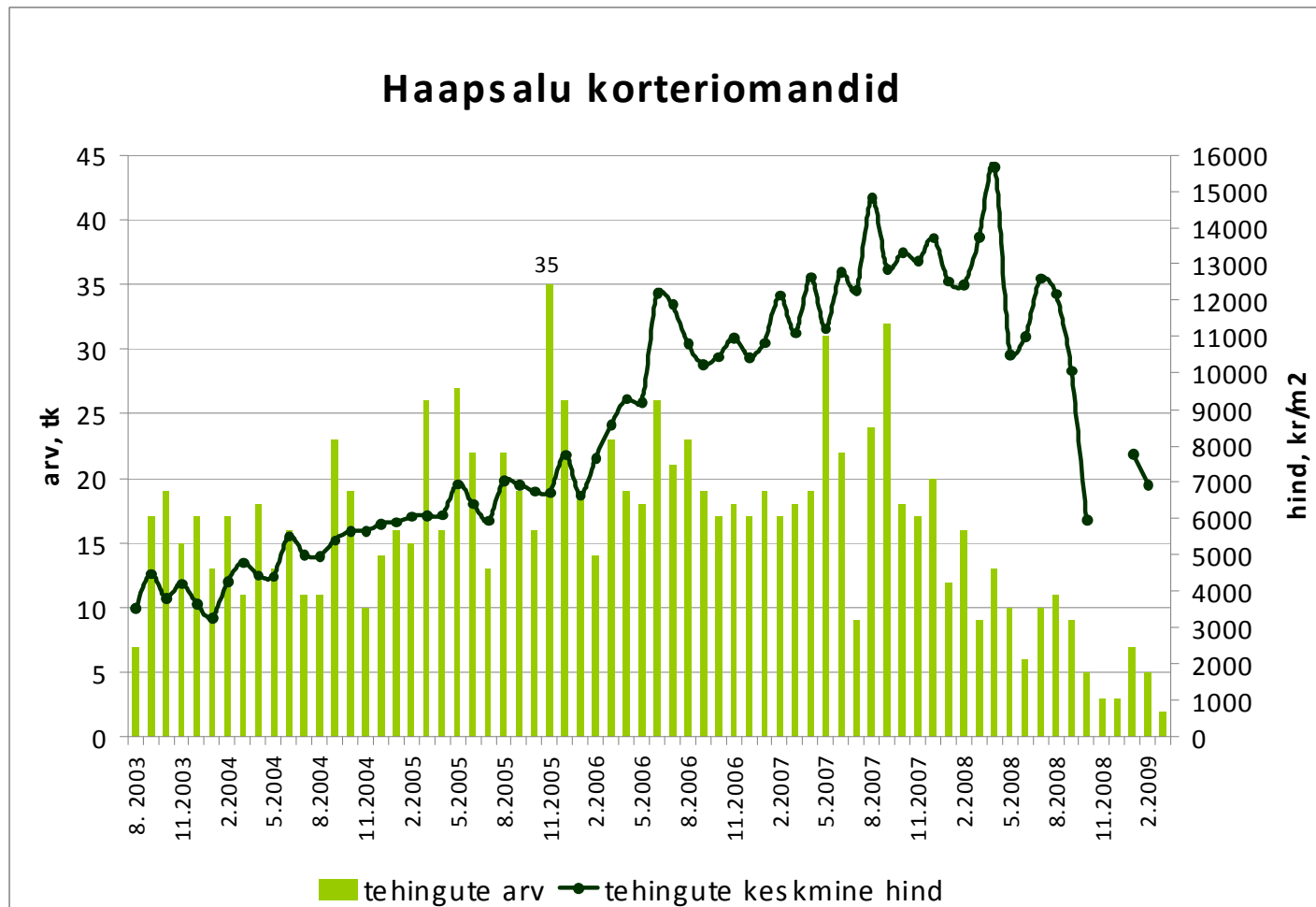
Allikas: Maa-amet

Tehingute arv on langenud 93%,  
tehinguhind ca 50%



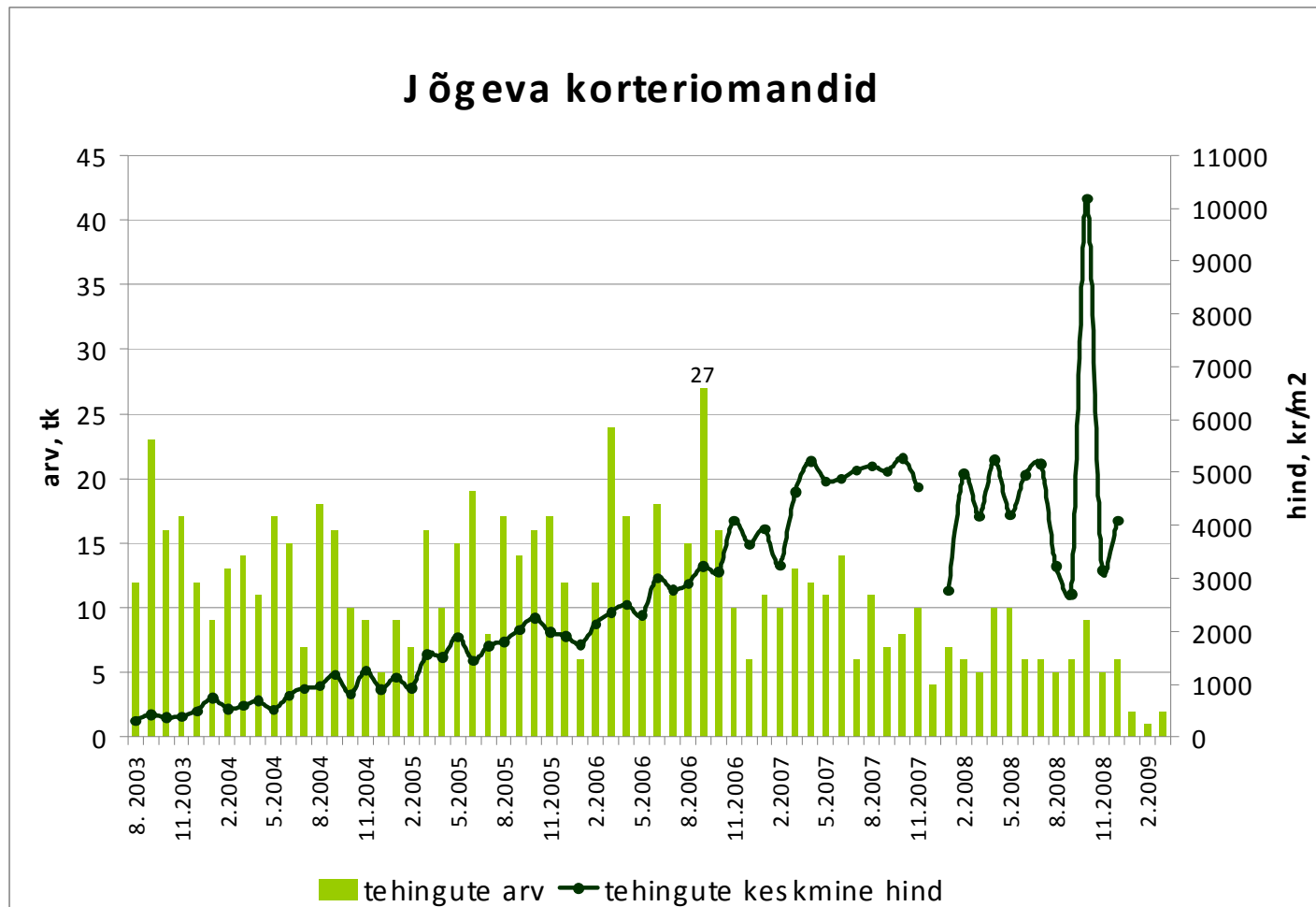
Allikas: Maa-amet

Tehingute arv on langenud 94%,  
tehinguhind ca 56%



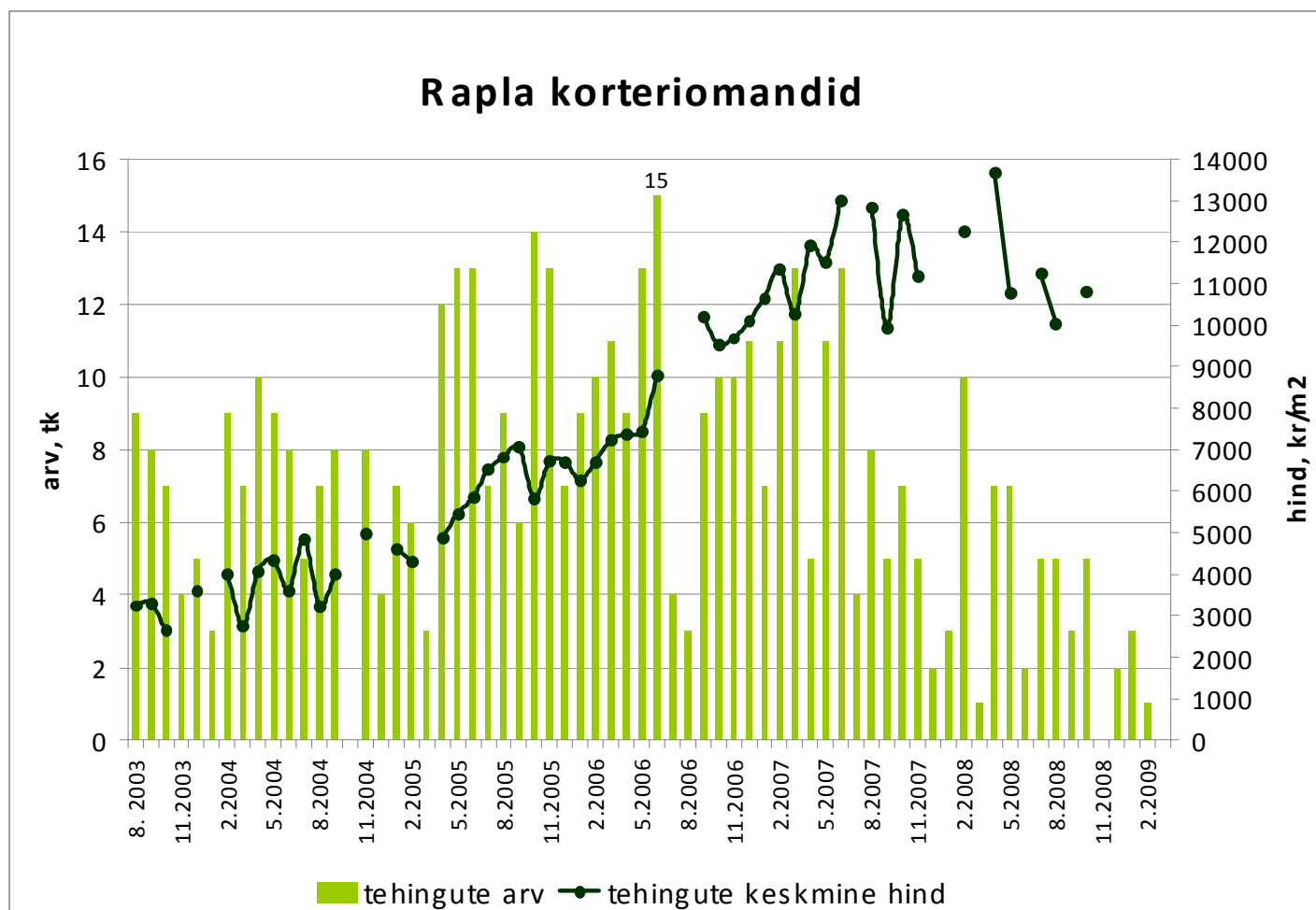
Allikas: Maa-amet

Tehingute arv on langenud 93%,  
tehinguhind ca 22%



Allikas: Maa-amet

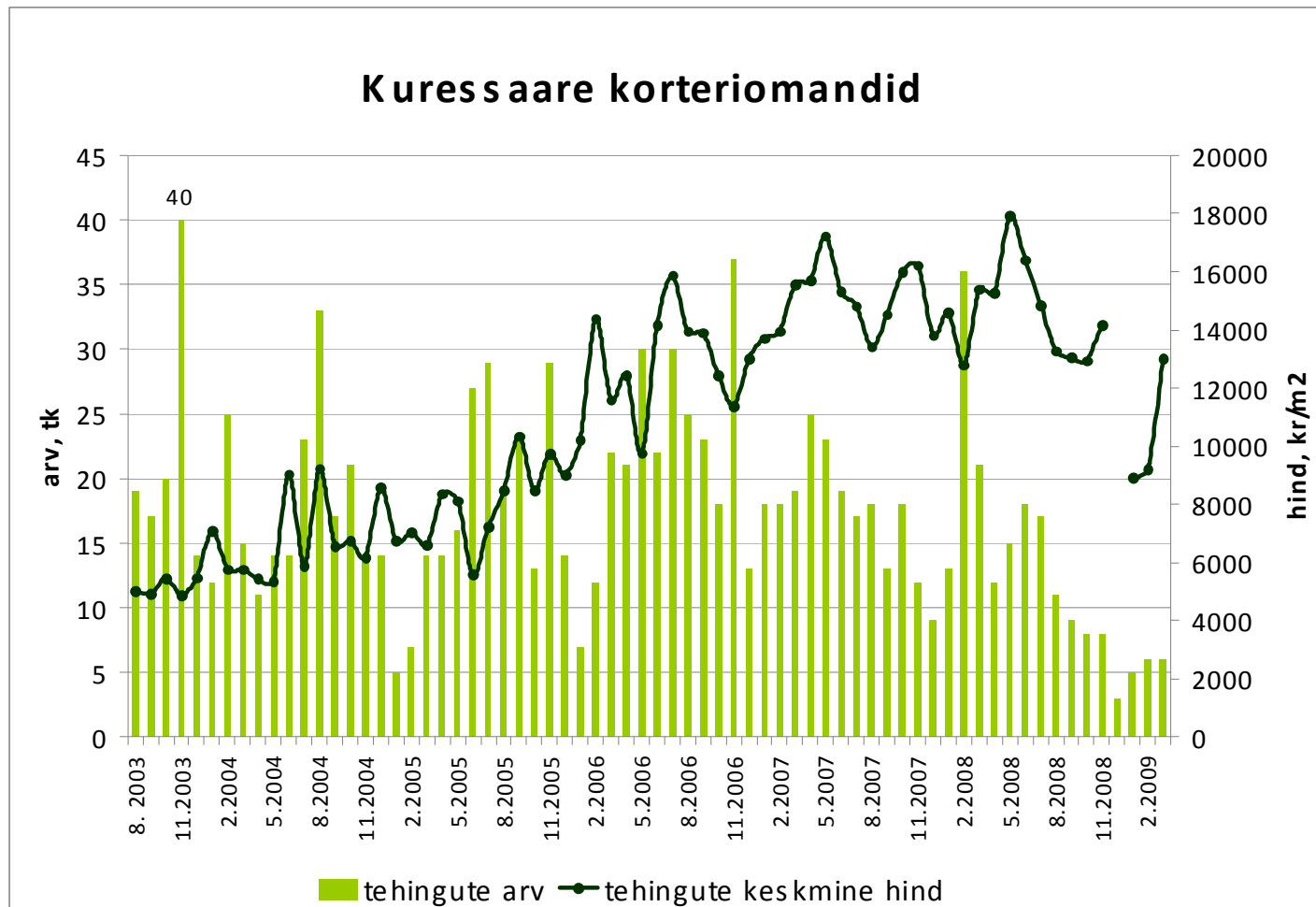
Tehingute arv on langenud 100%  
tehinguhind ca 21%



Allikas: Maa-amet

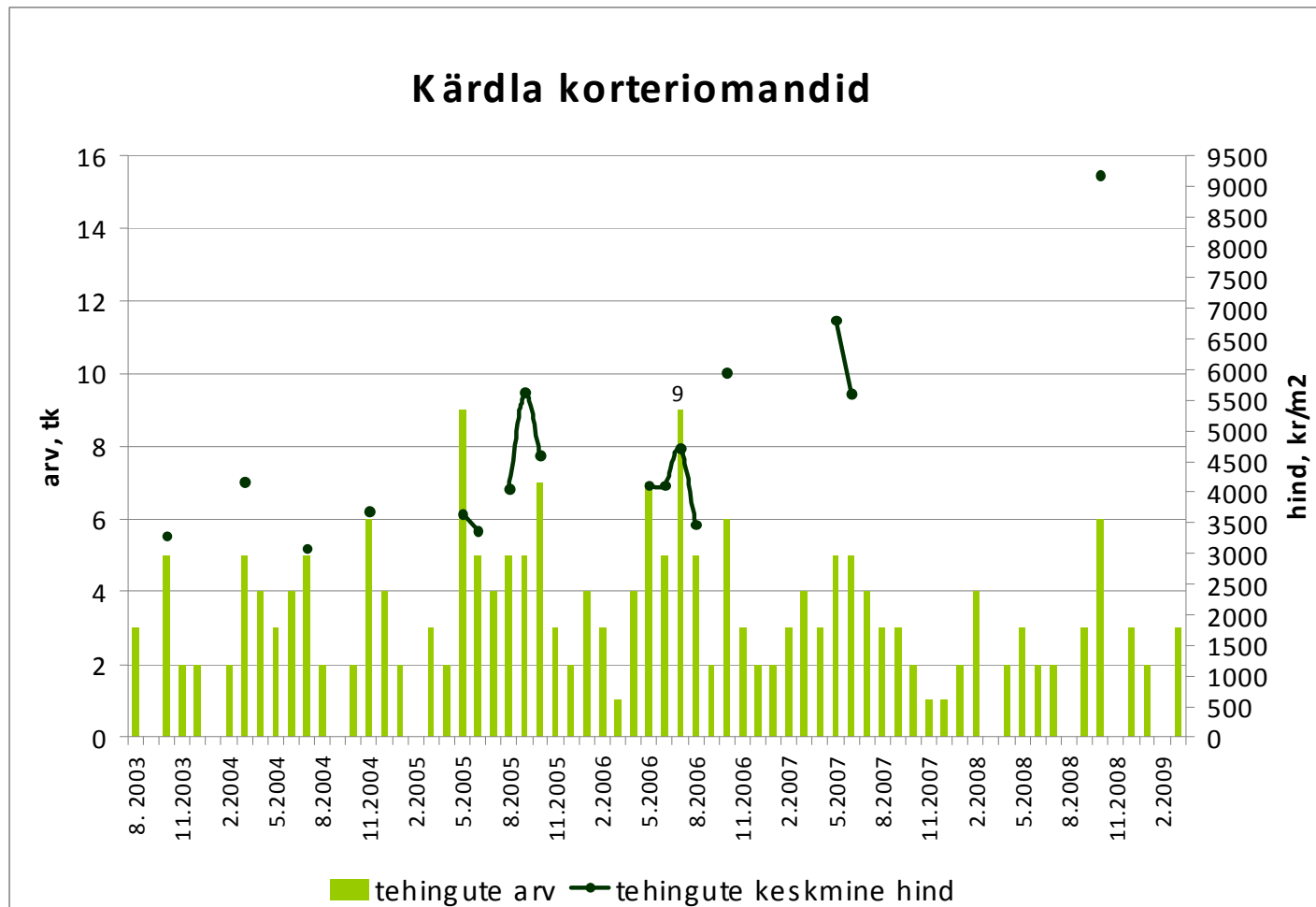


Tehingute arv on langenud 84%,  
tehinguhind 27%



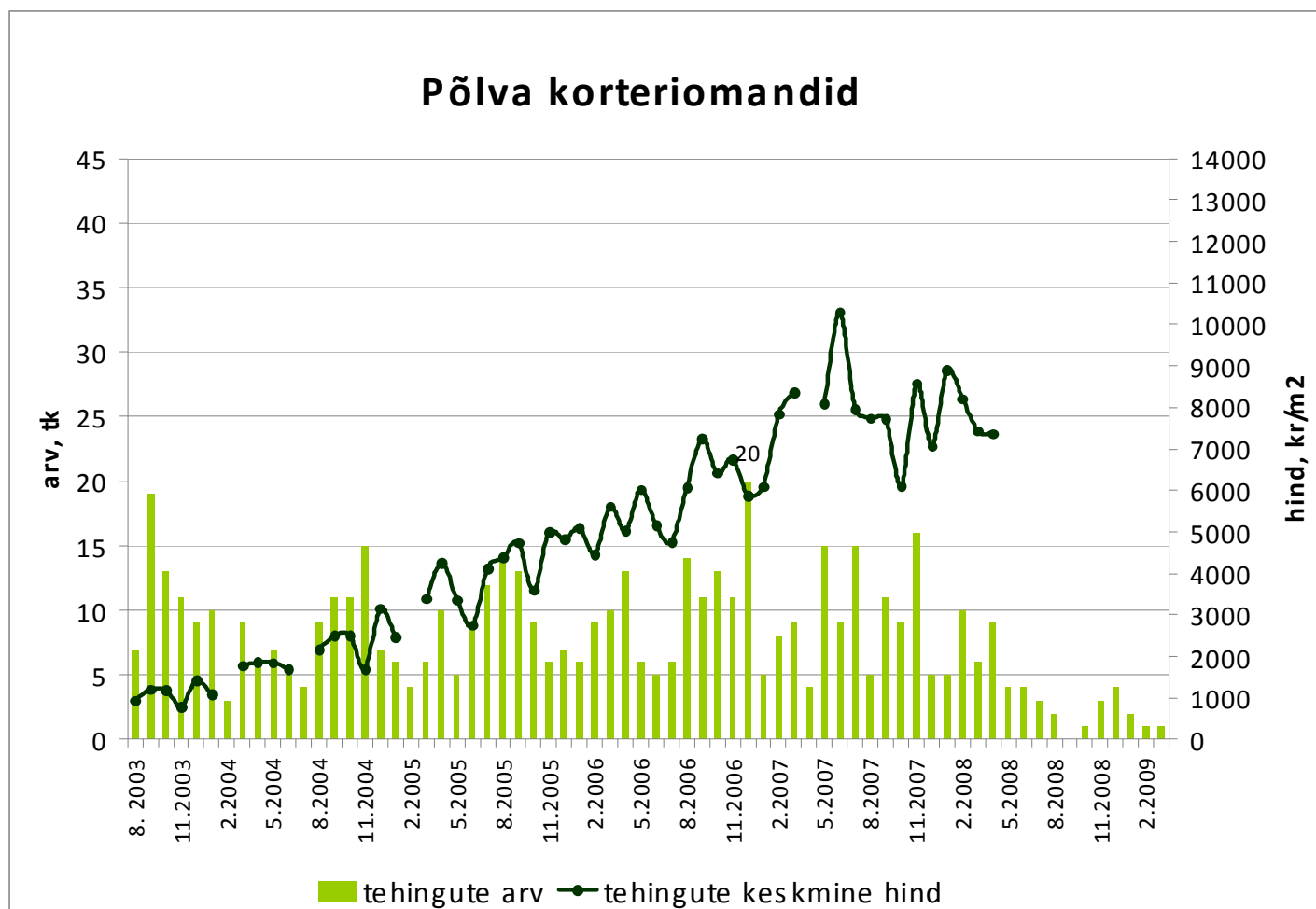
Allikas: Maa-amet

Tehingute arv on langenud 67%



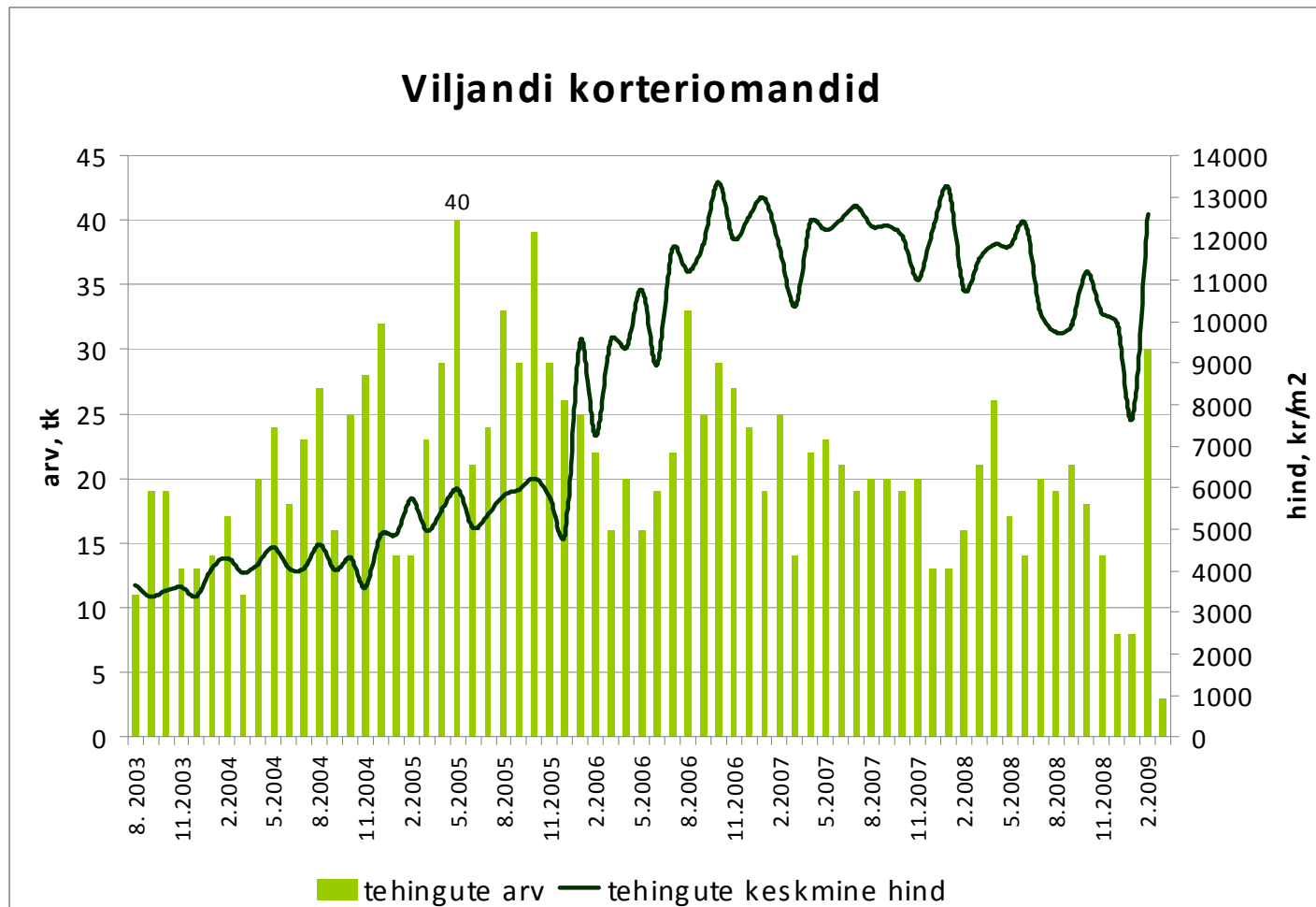
Allikas: Maa-amet

Tehingute arv on langenud 95%,  
tehinguhind ca 28%



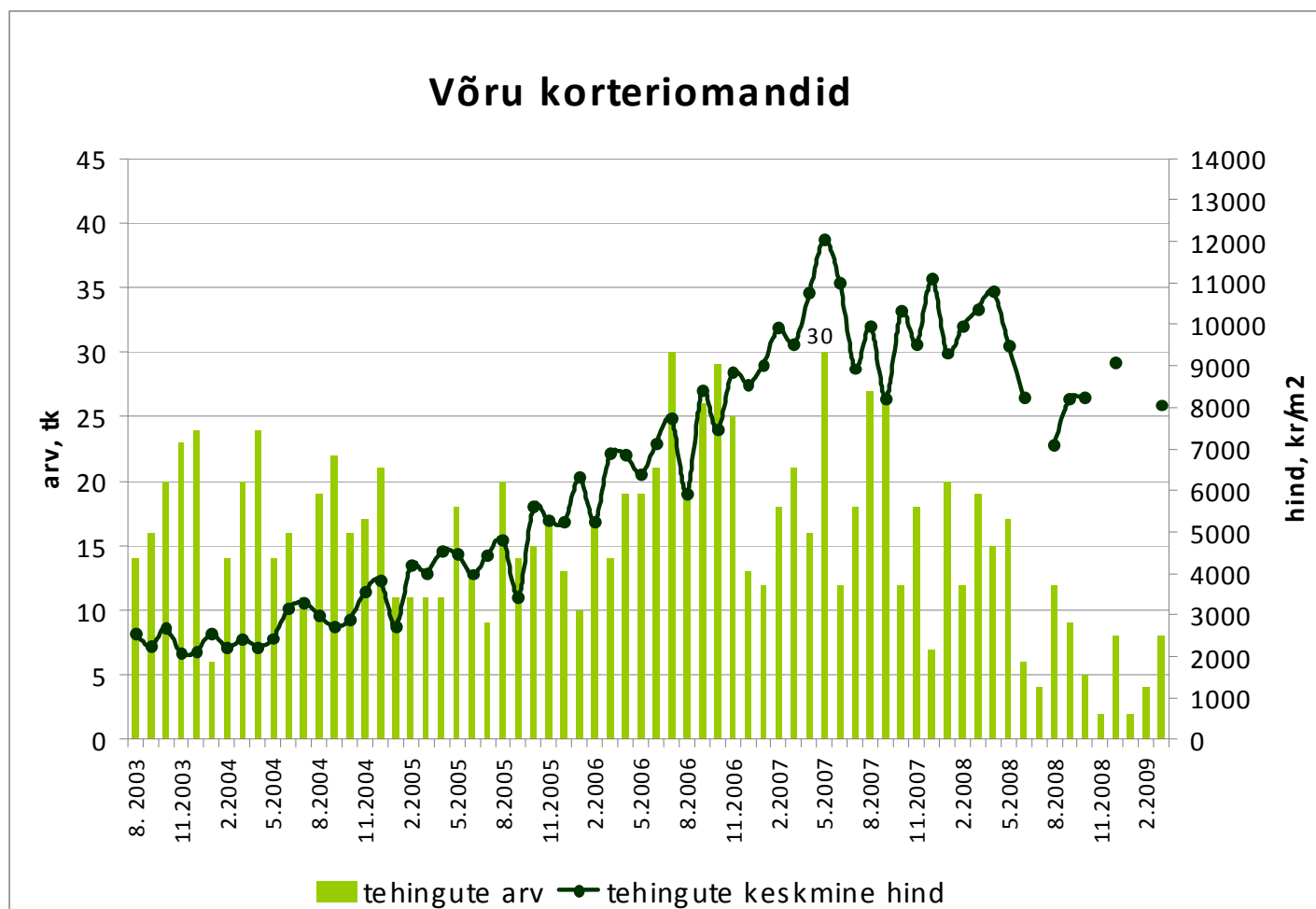
Allikas: Maa-amet

Tehingute arv on langenud 93%



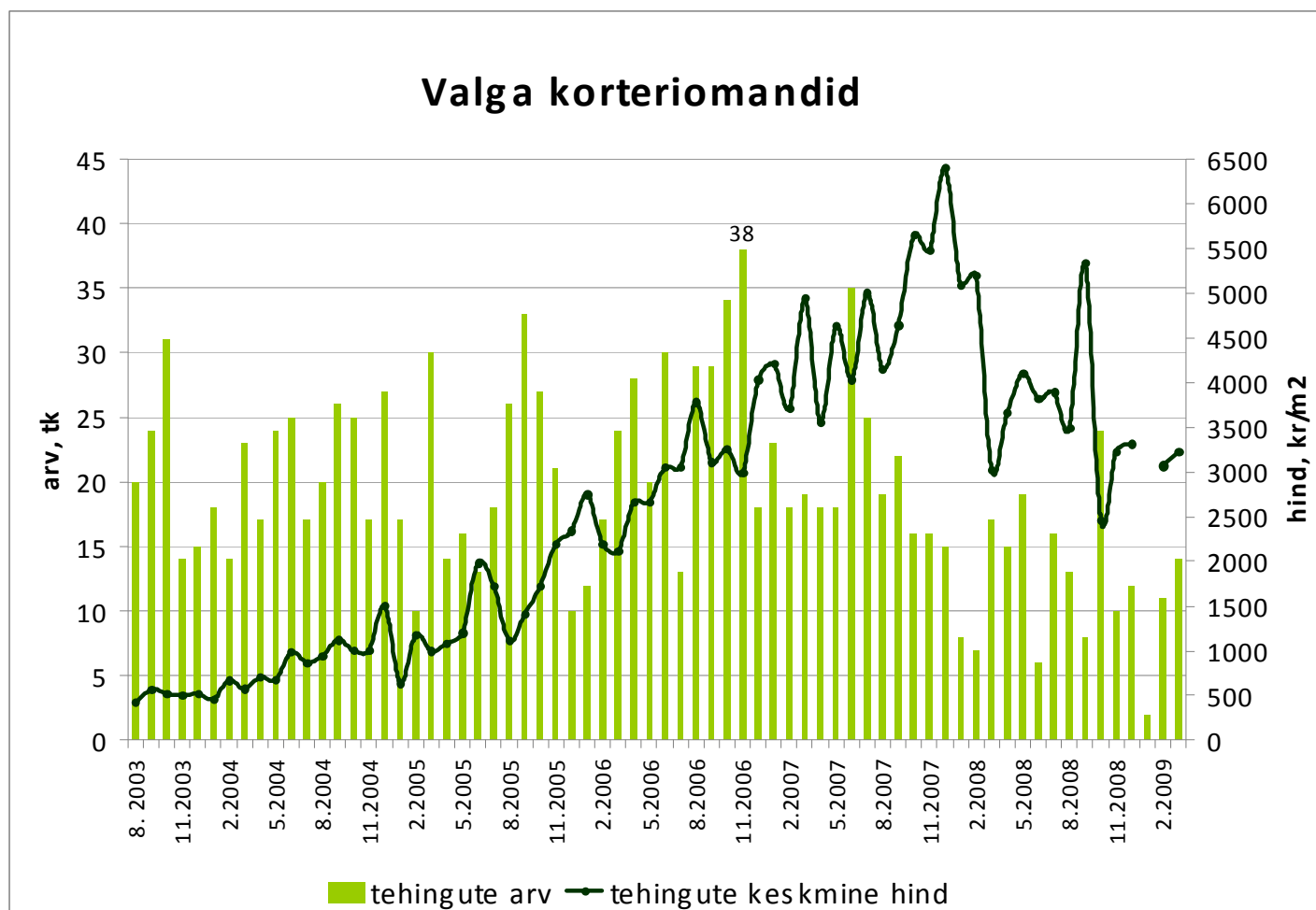
Allikas: Maa-amet

Tehingute arv on langenud 73%,  
tehinguhind 33%



Allikas: Maa-amet

Tehingute arv on langenud 63%,  
tehinguhind 50%



Allikas: Maa-amet