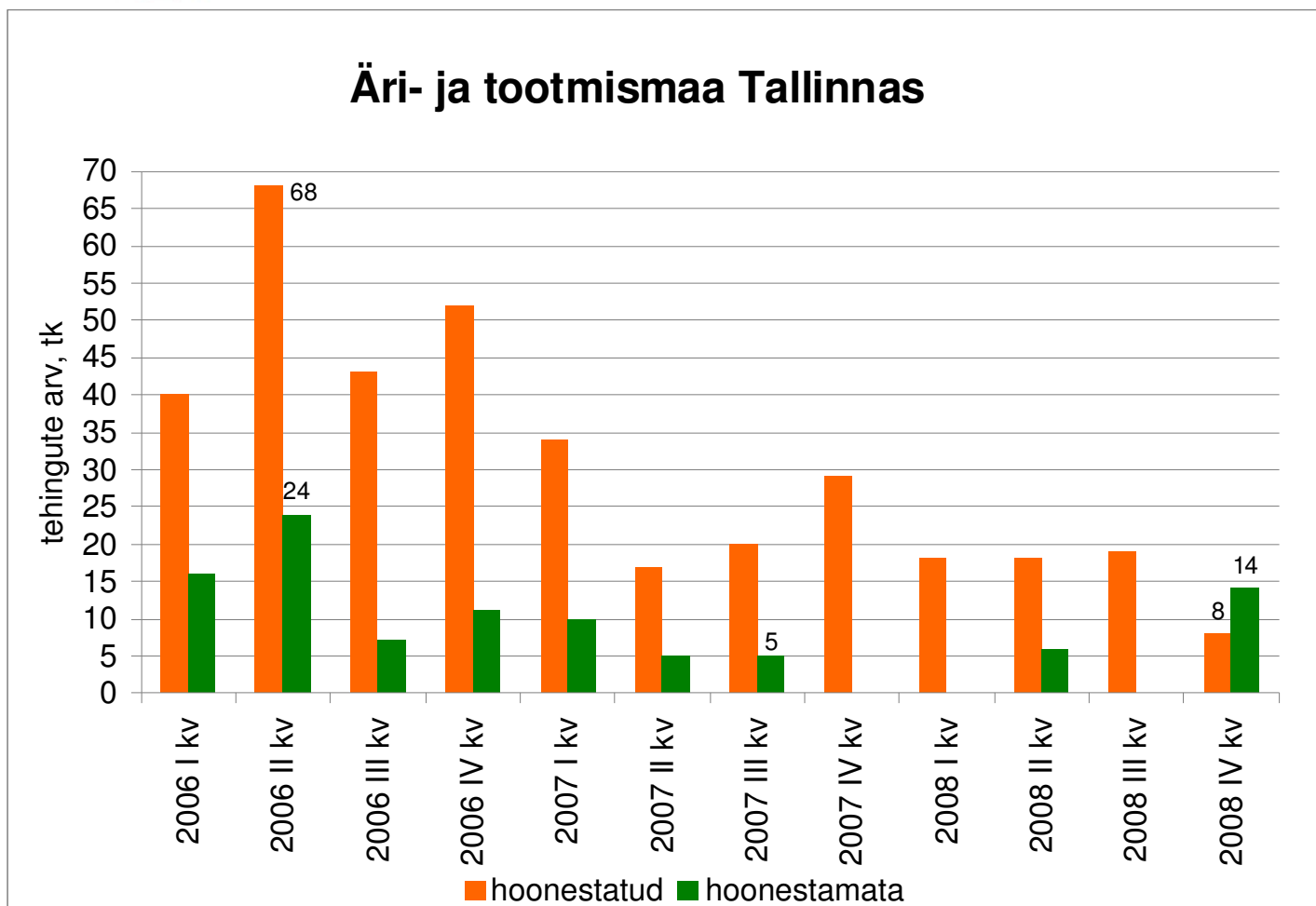




# **KINNISVARATURU AKTIIVSUS JA REGIONAALSED ERIPÄRAD**

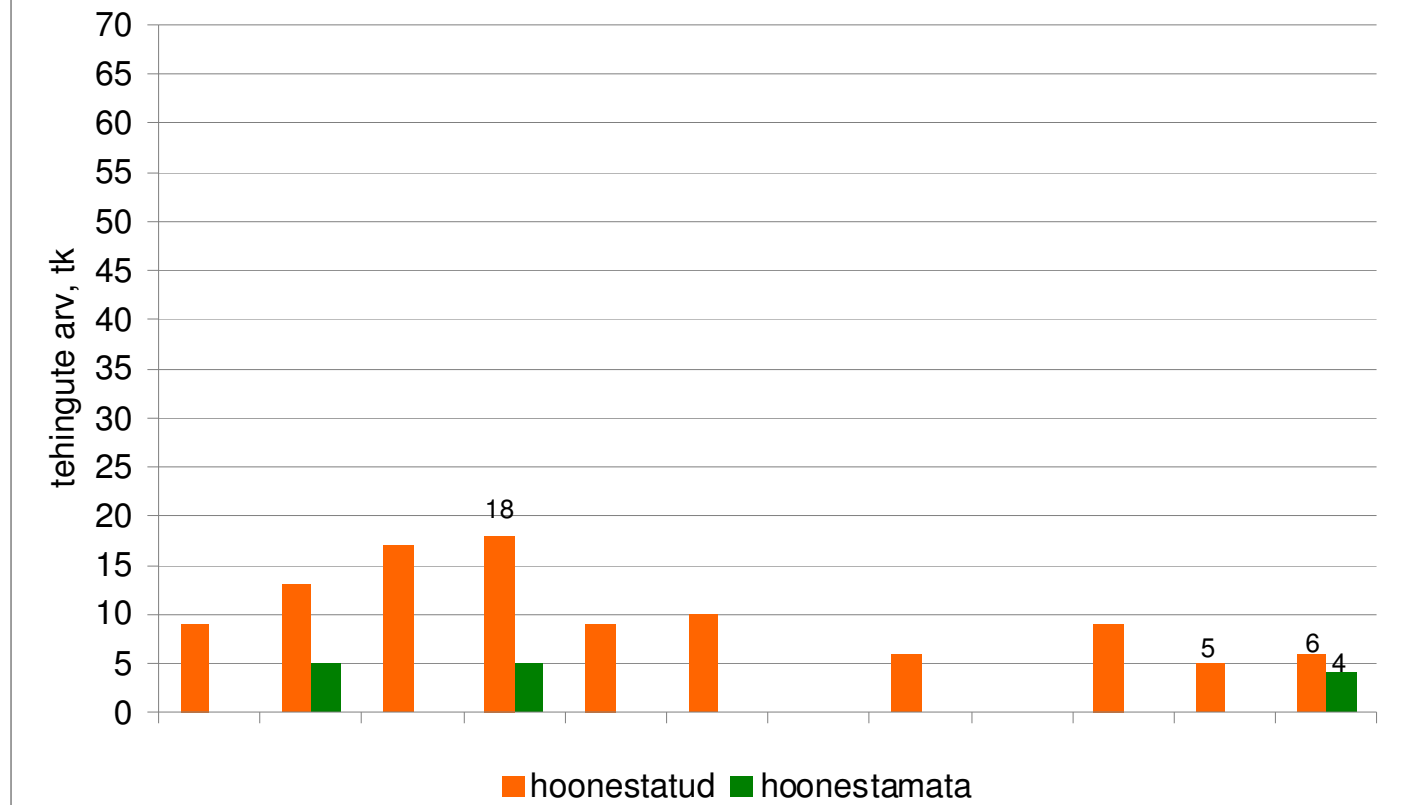
## Äri- ja tootmismaa Tallinnas



Allikas: Maa-amet, Pindi Kinnisvara



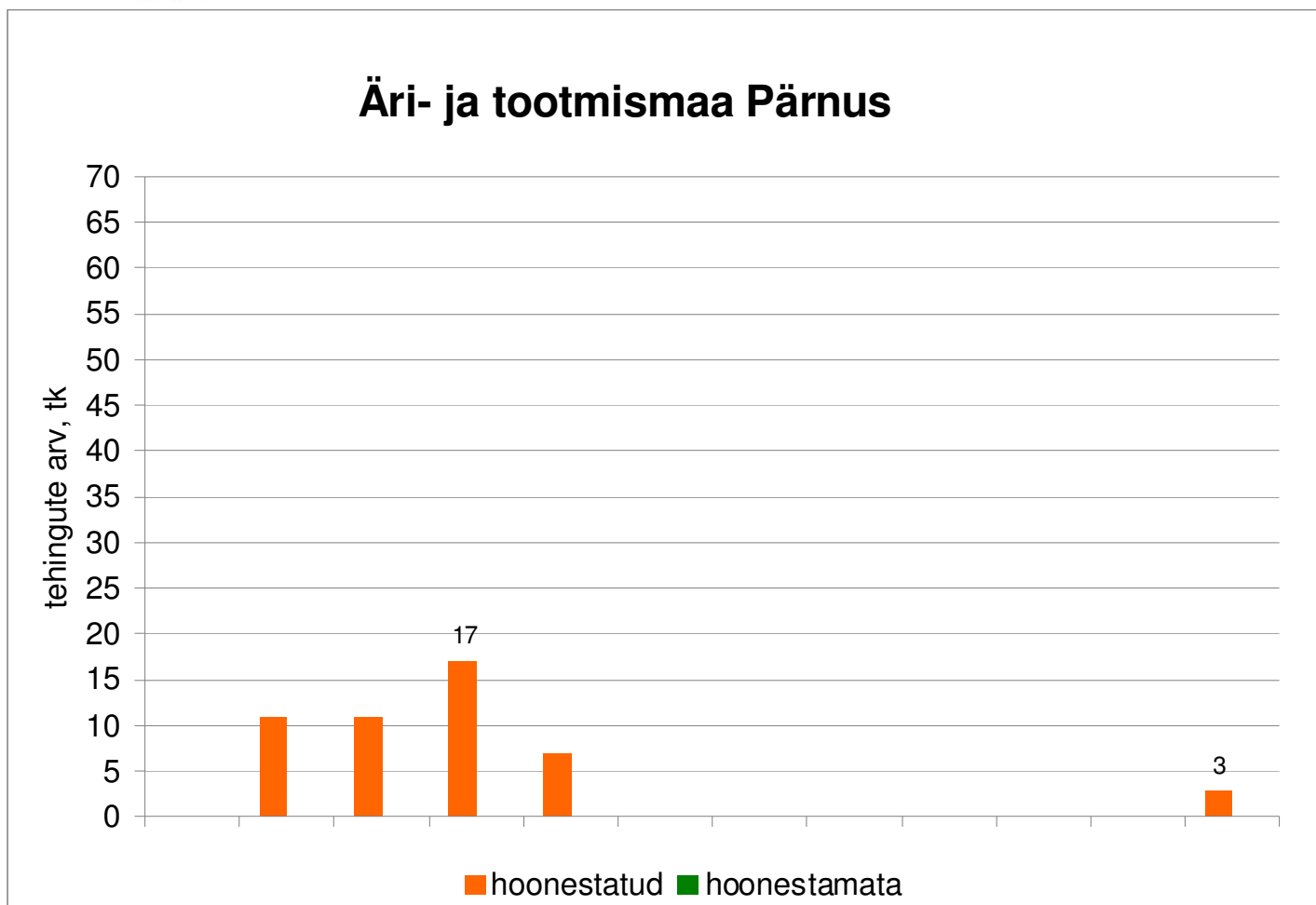
## Äri- ja tootmismaa Tartus



Allikas: Maa-amet, Pindi Kinnisvara



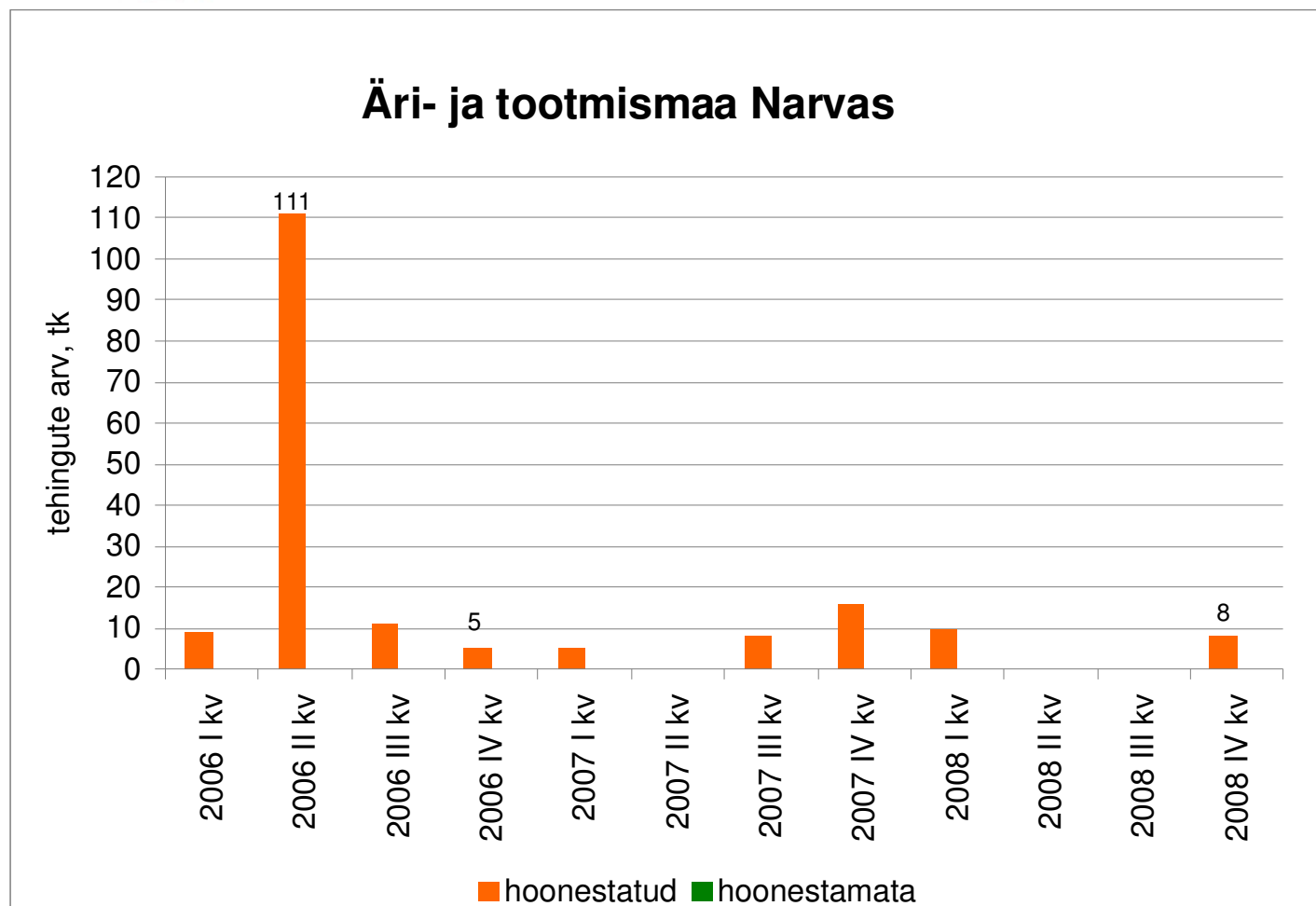
## Äri- ja tootmismaa Pärnus



Allikas: Maa-amet, Pindi Kinnisvara

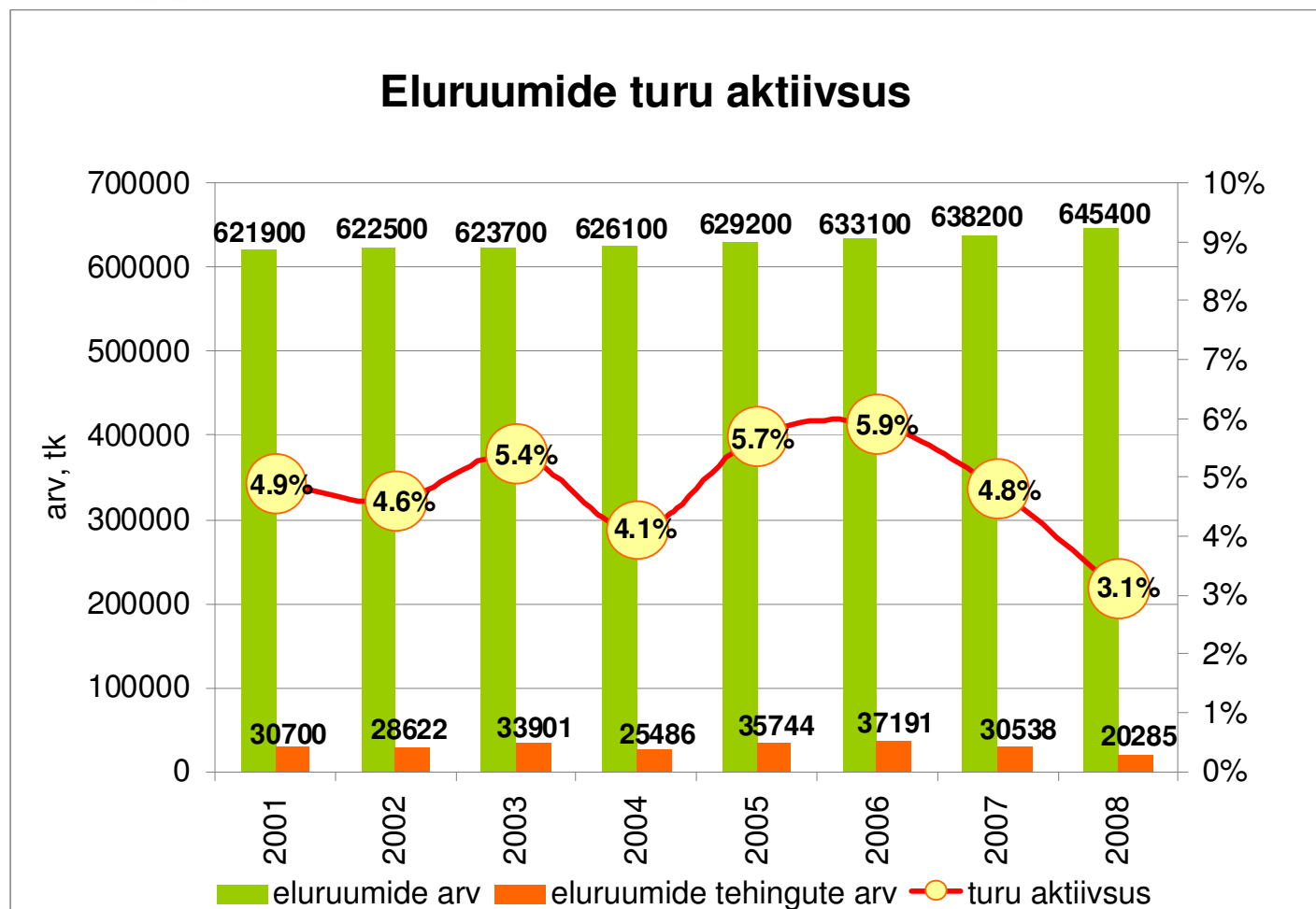


## Äri- ja tootmismaa Narvas



Allikas: Maa-amet, Pindi Kinnisvara

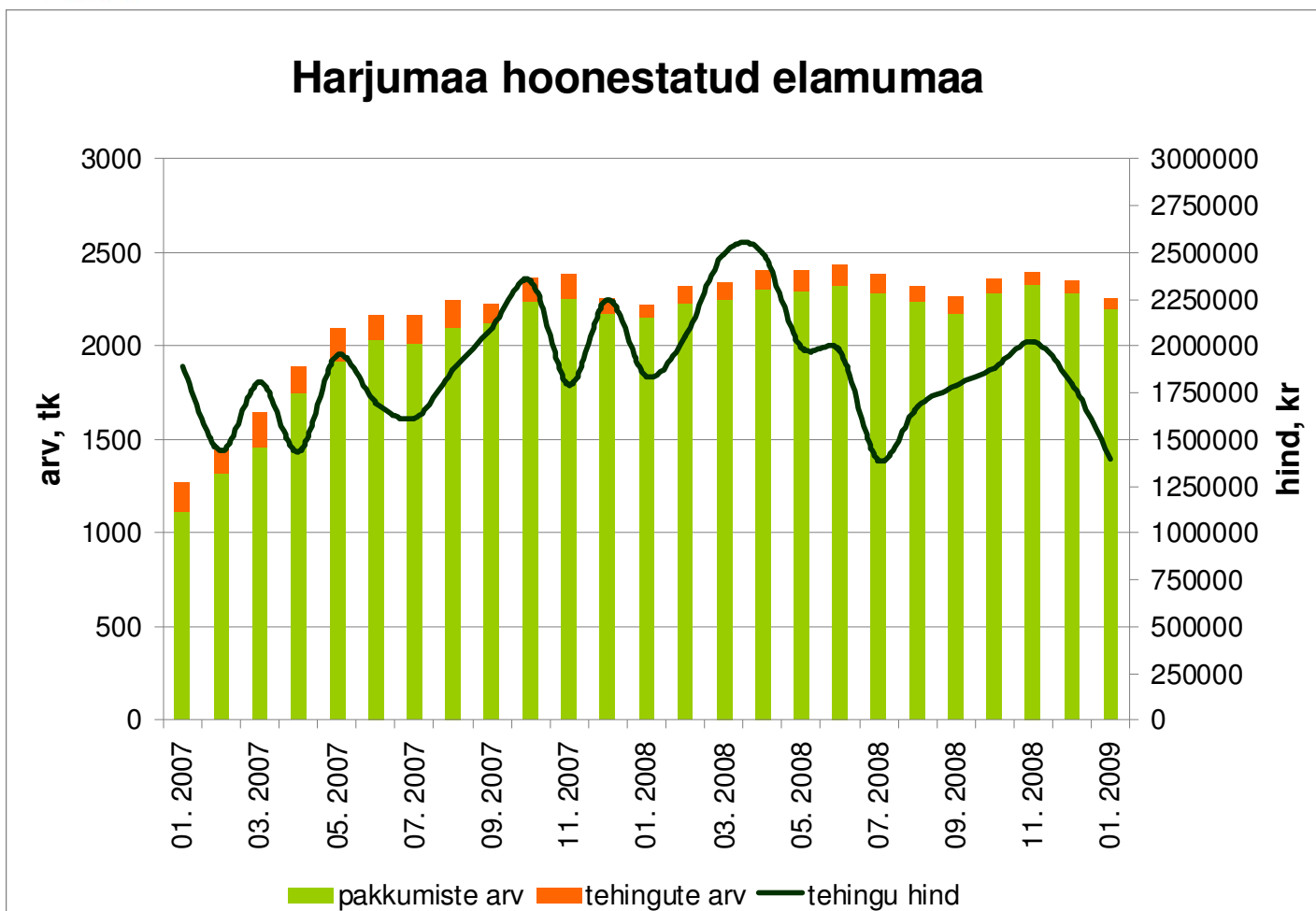
## Eluruumide turu aktiivsus



Allikad: Statistikaamet, Maa-amet, Pindi Kinnisvara



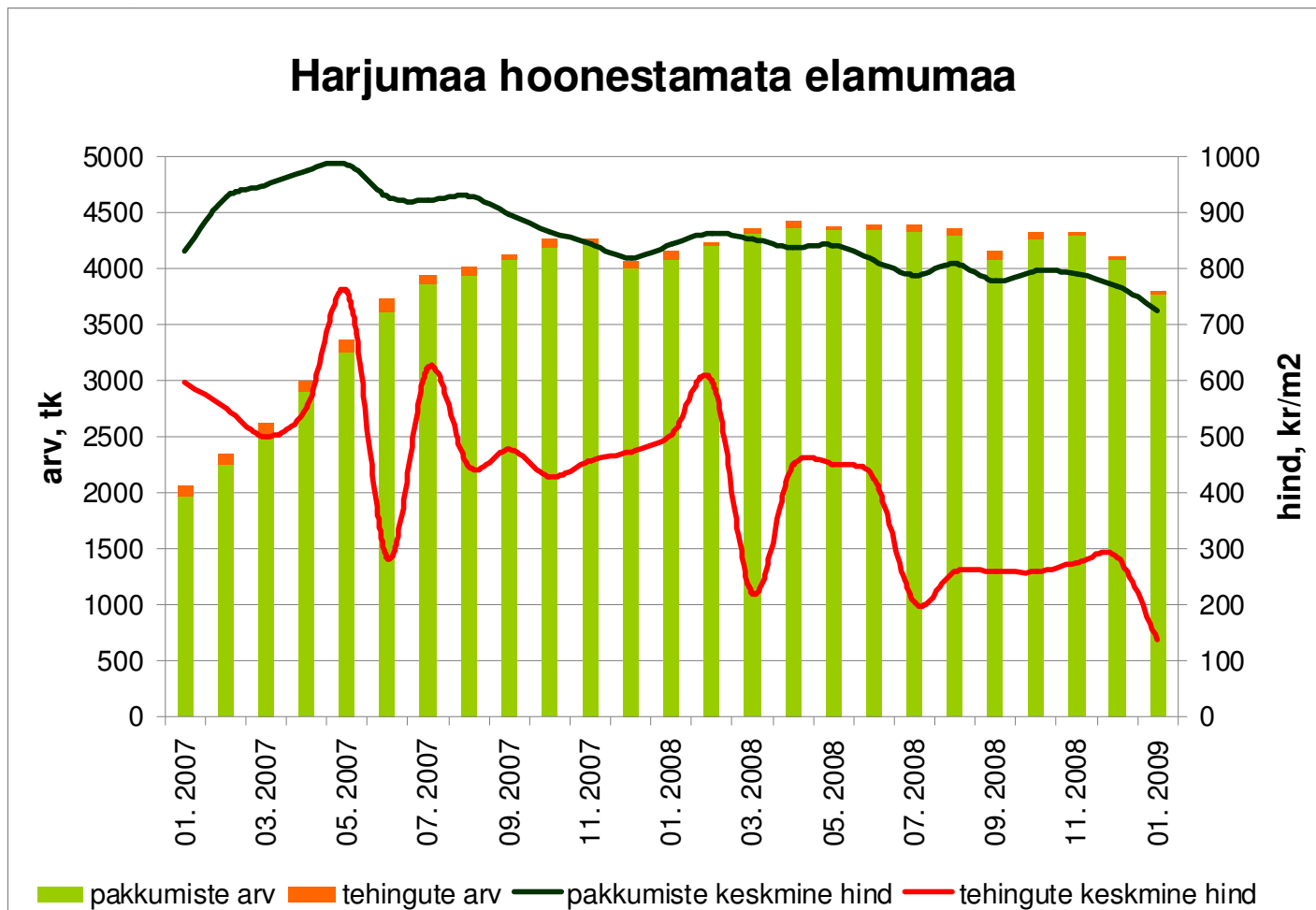
Tehingute arv on langenud 69%,  
tehinguhind 44%



Allikad: Maa-amet, City24, Pindi Kinnisvara



Tehingute arv on langenud 76%,  
tehinguhind 82%

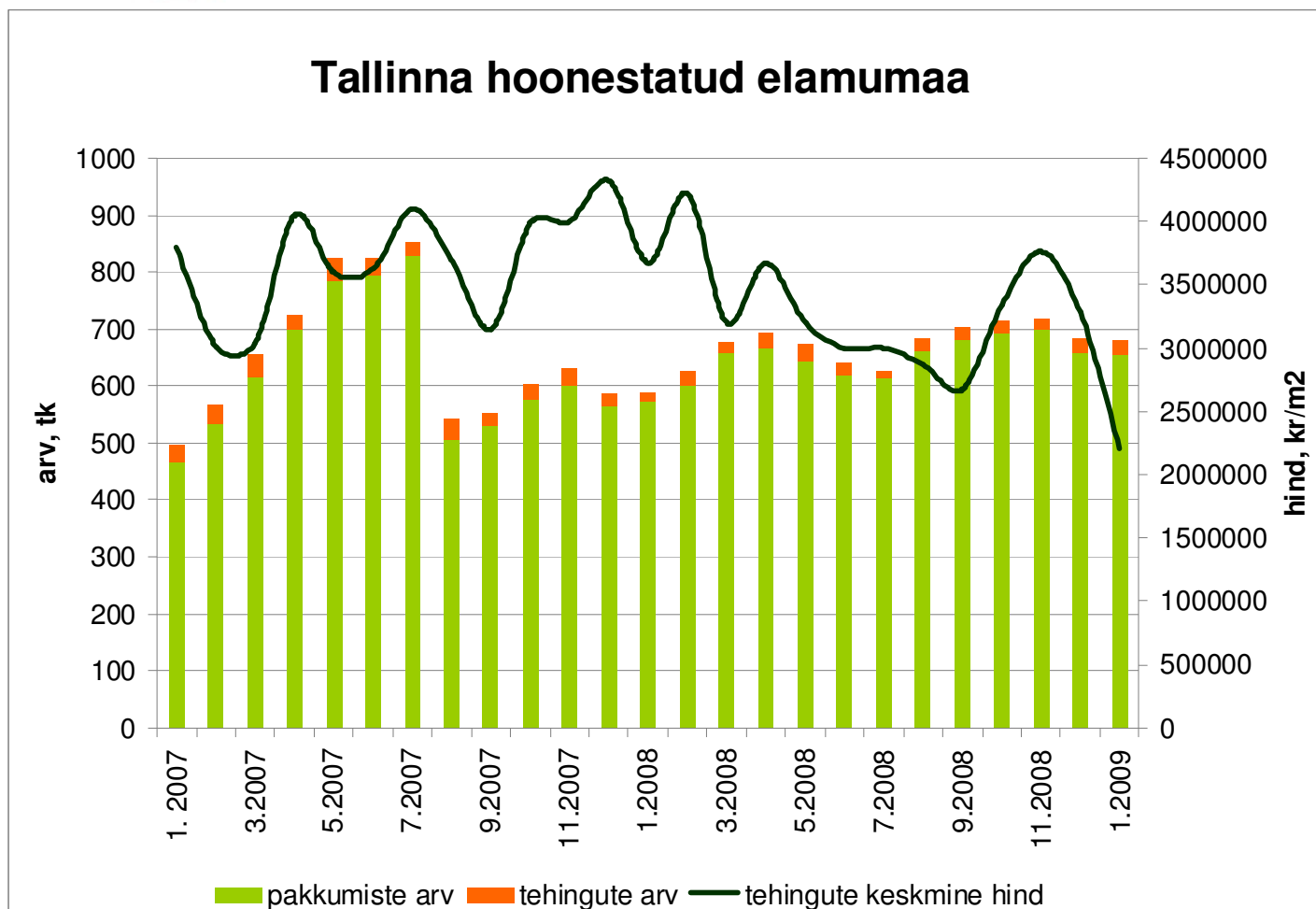


Allikas: Maa-amet, Pindi Kinnisvara





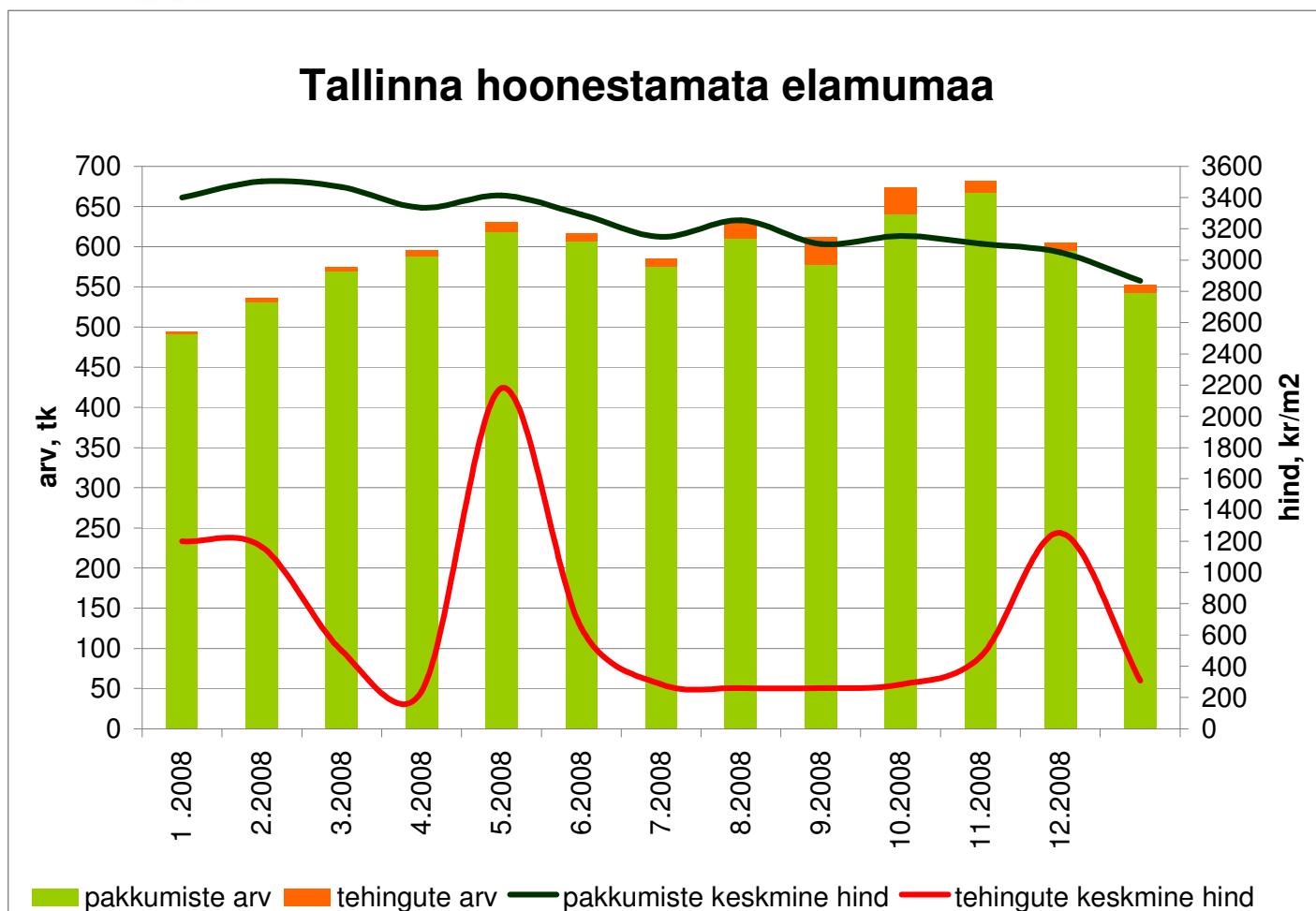
Tehingute arv on 2006.a. märtsist langenud 66%, tehinguhind 2007.a. dets-st 49%



Allikad: Maa-amet, City24, Pindi Kinnisvara



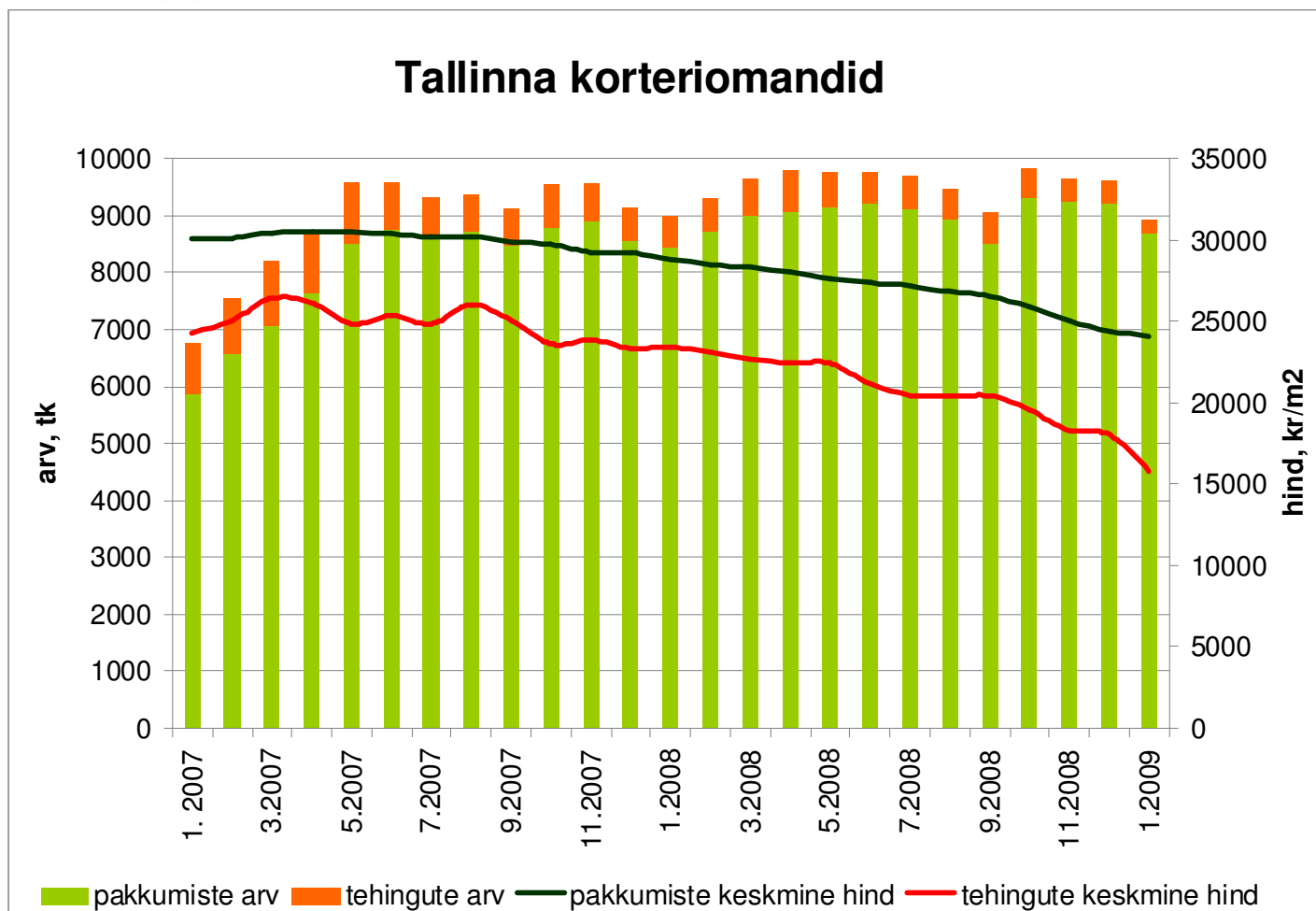
Tehingute arv on 2006.a. maist langenud 63%, tehinguhind 2007.a. juunist 89%



Allikad: Maa-amet, City24, Pindi Kinnisvara



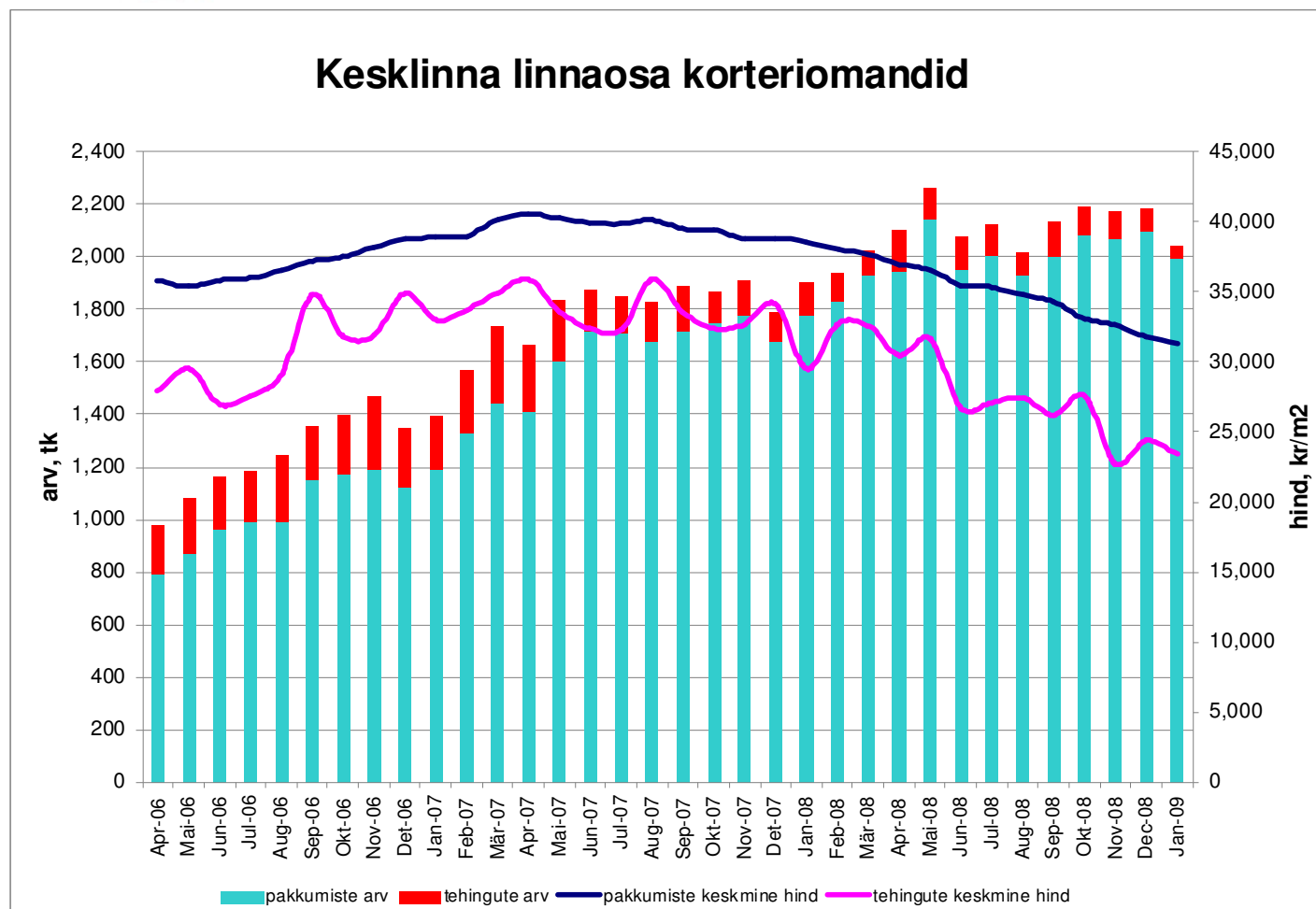
Tehingute arv on langenud 78%,  
tehinguhind 40%



Allikad: Maa-amet, City24, Pindi Kinnisvara



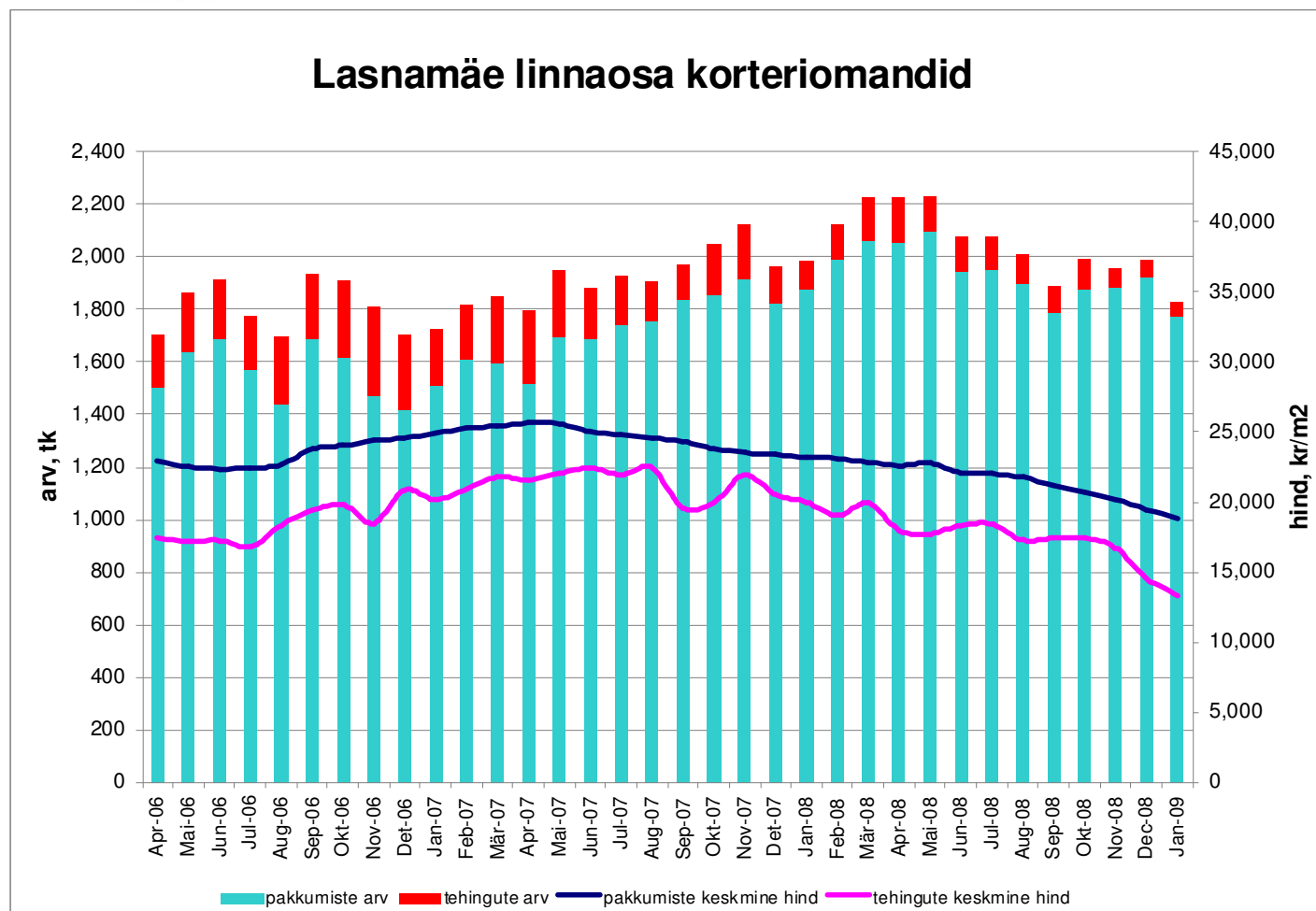
Tehingute arv on langenud 83%,  
tehinguhind 35%



Allikad: Maa-amet, City24, Pindi Kinnisvara



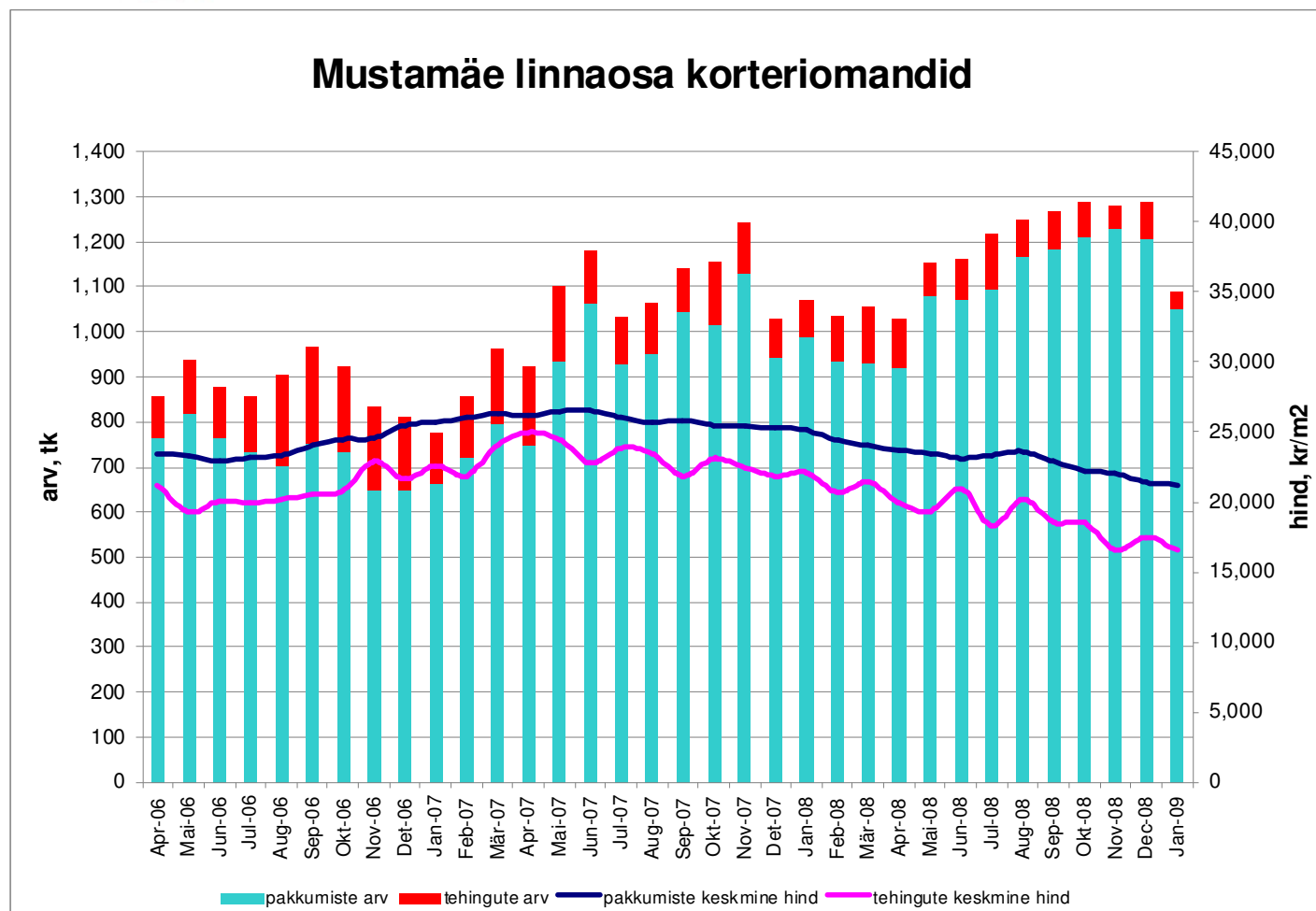
Tehingute arv on langenud 83%,  
tehinguhind 40%



Allikad: Maa-amet, City24, Pindi Kinnisvara



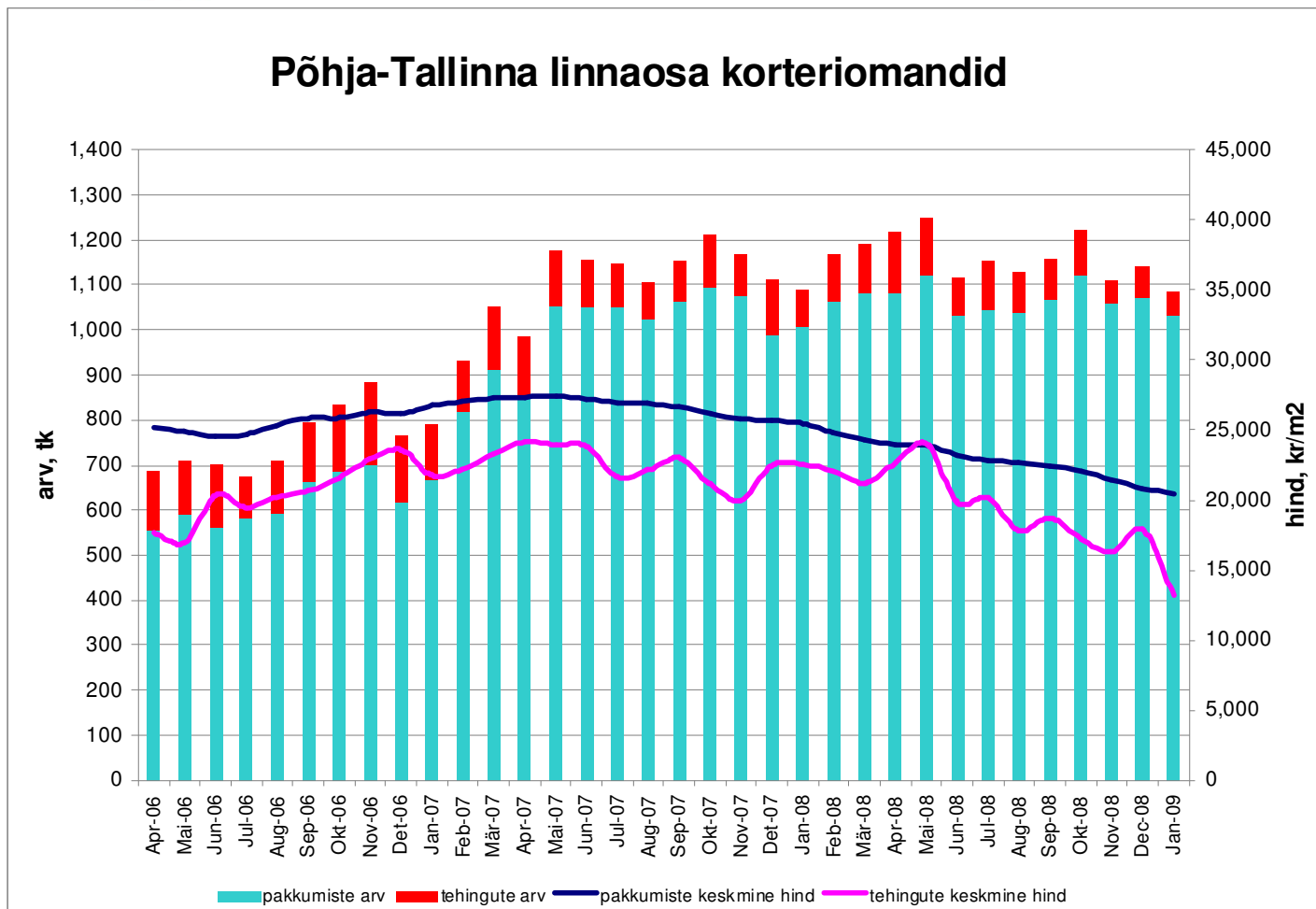
Tehingute arv on langenud 82%,  
tehinguhind 34%



Allikad: Maa-amet, City24, Pindi Kinnisvara



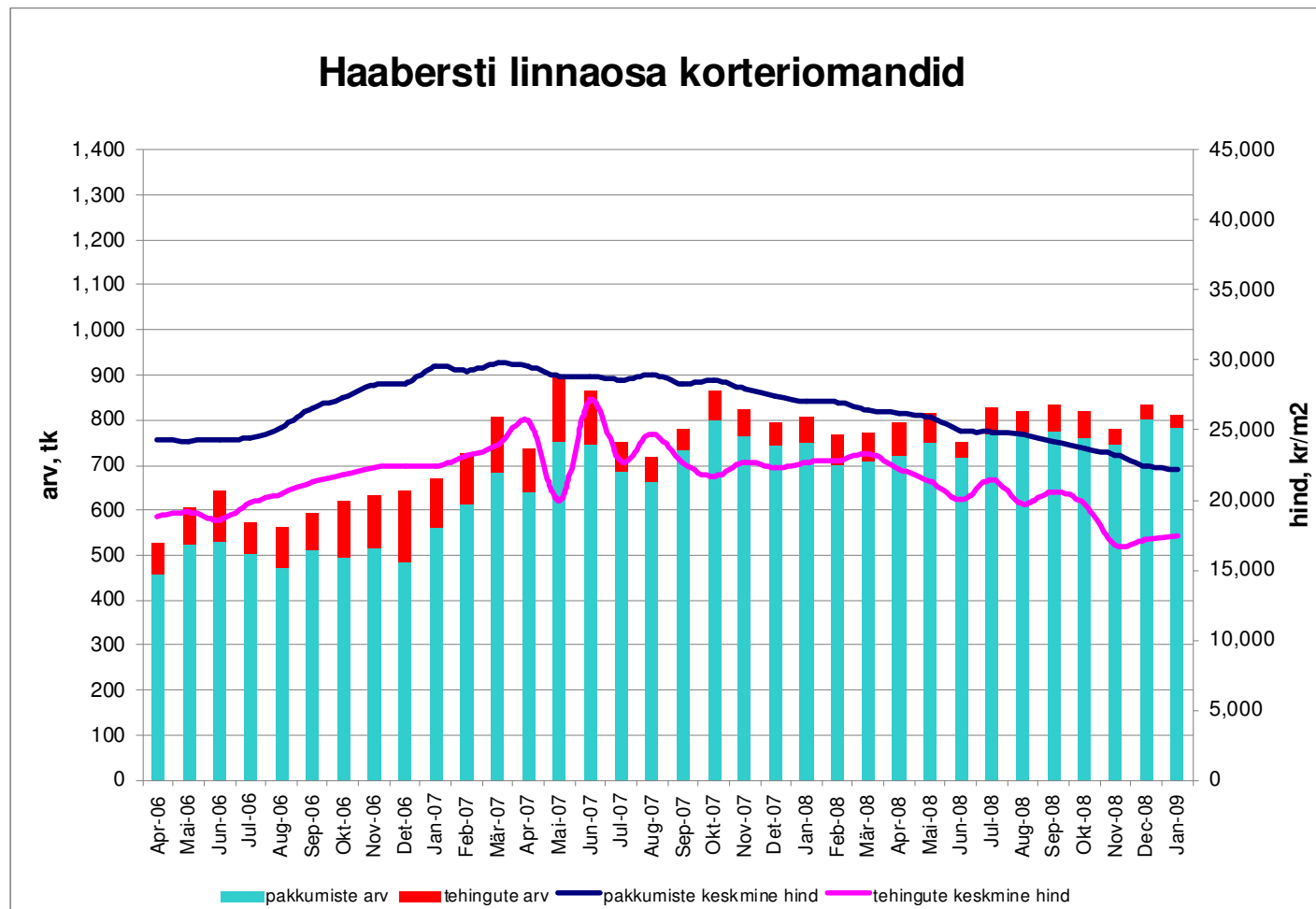
Tehingute arv on langenud 71%,  
tehinguhind 45%



Allikad: Maa-amet, City24, Pindi Kinnisvara



Tehingute arv on langenud 83%,  
tehinguhind 36%

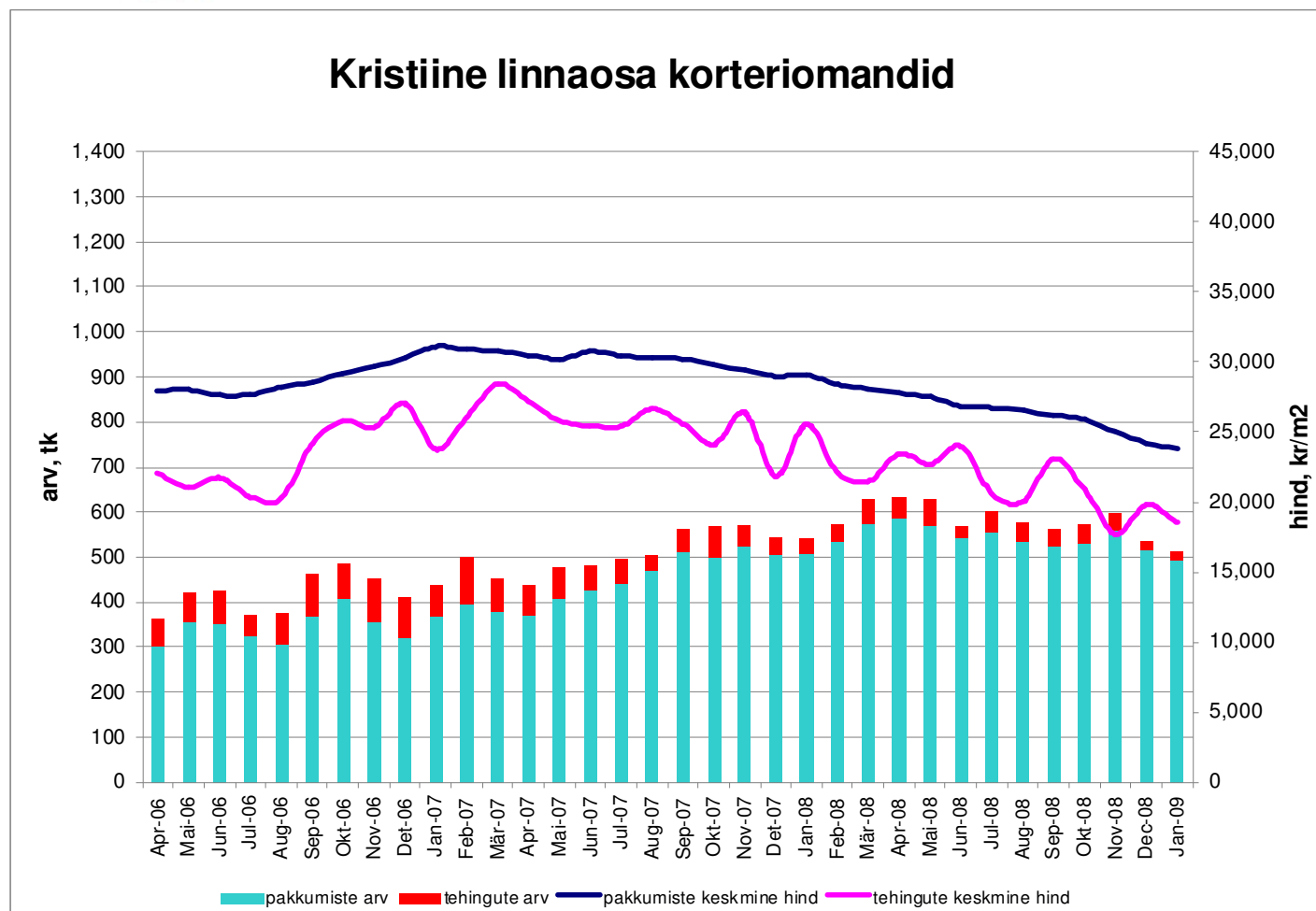


Allikad: Maa-amet, City24, Pindi Kinnisvara





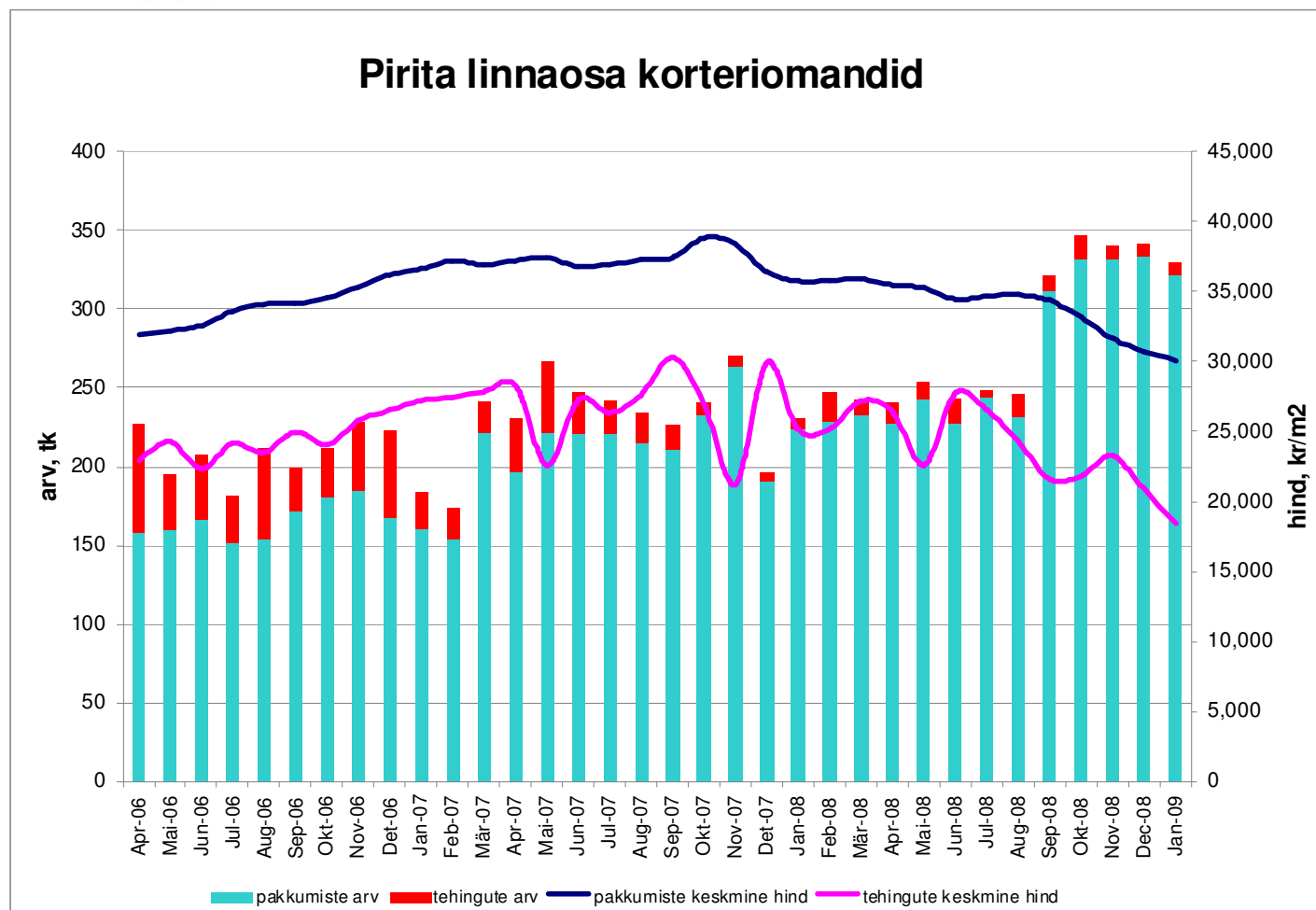
Tehingute arv on langenud 83%,  
tehinguhind 35%



Allikad: Maa-amet, City24, Pindi Kinnisvara



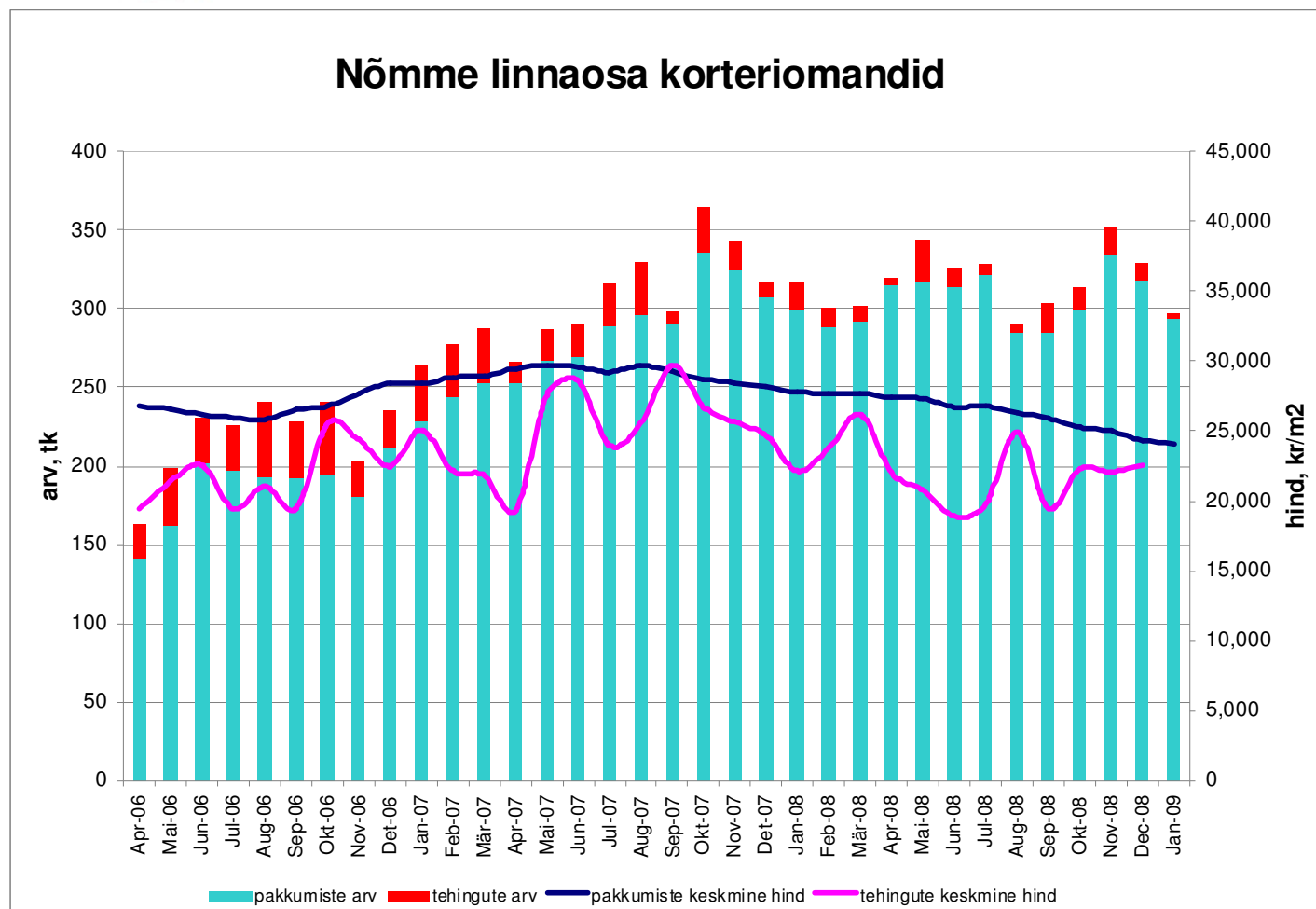
Tehingute arv on langenud 90%,  
tehinguhind 39%



Allikad: Maa-amet, City24, Pindi Kinnisvara



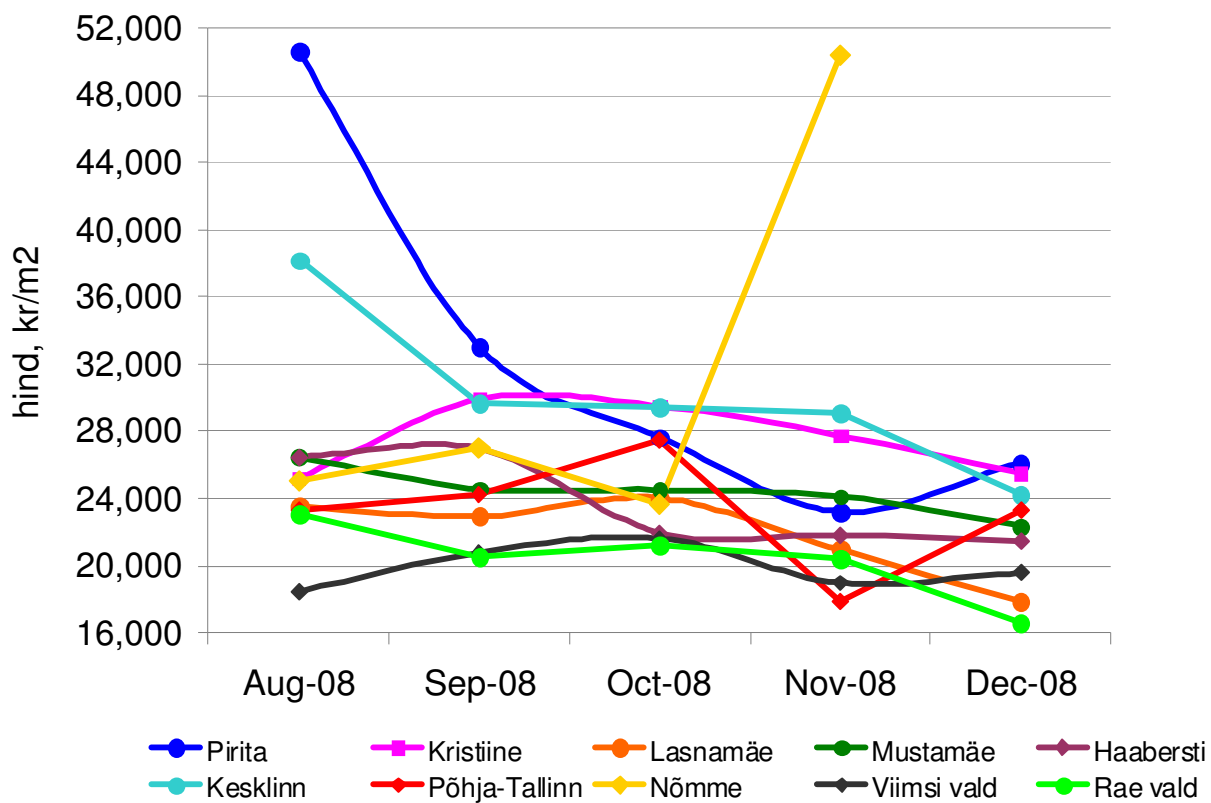
Tehingute arv on langenud 94%,  
tehinguhind 25%



Allikad: Maa-amet, City24, Pindi Kinnisvara

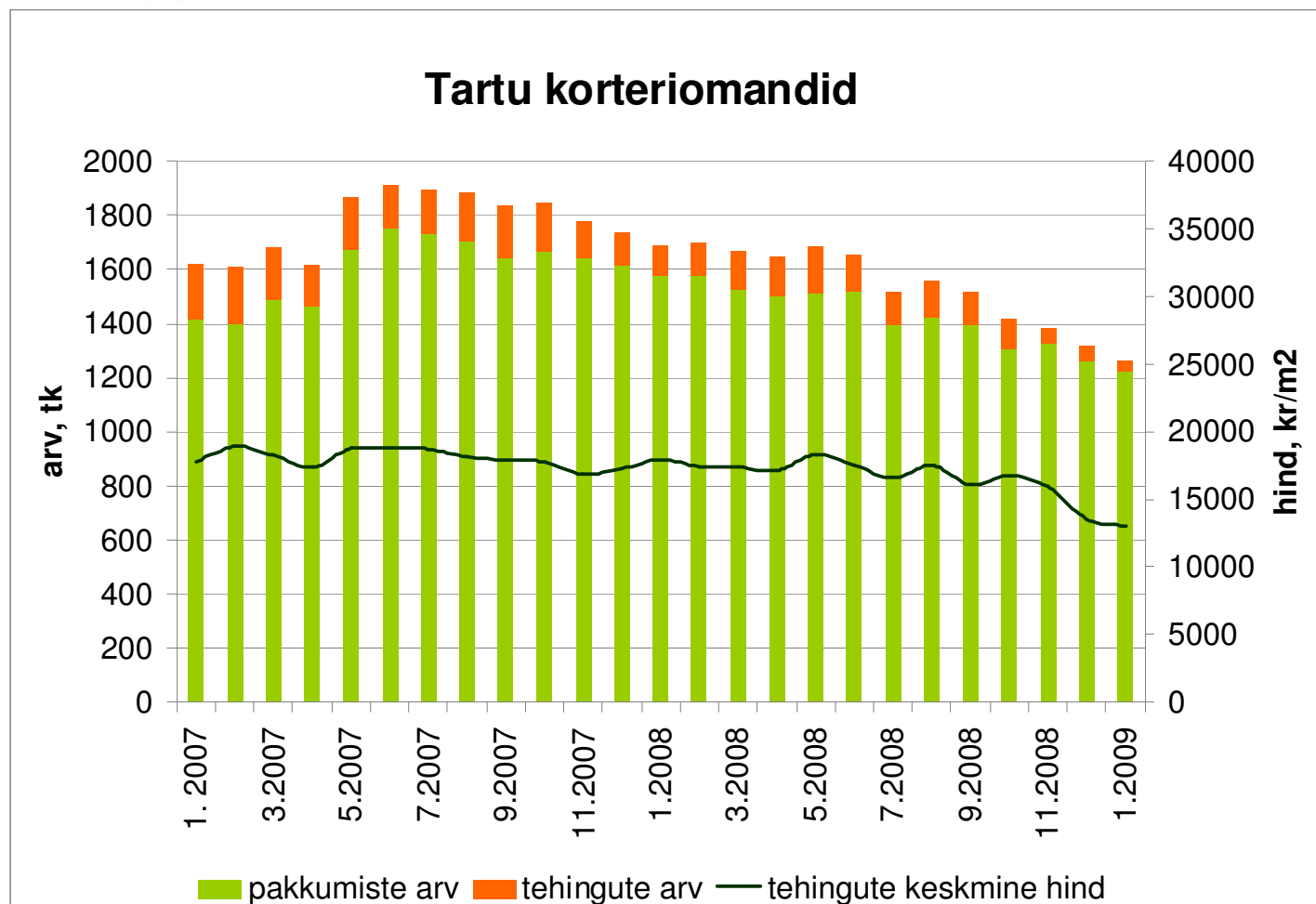


### Tallinna linnaosade, Viimsi ja Rae valla uute korteriomandite keskmine tehinguhind





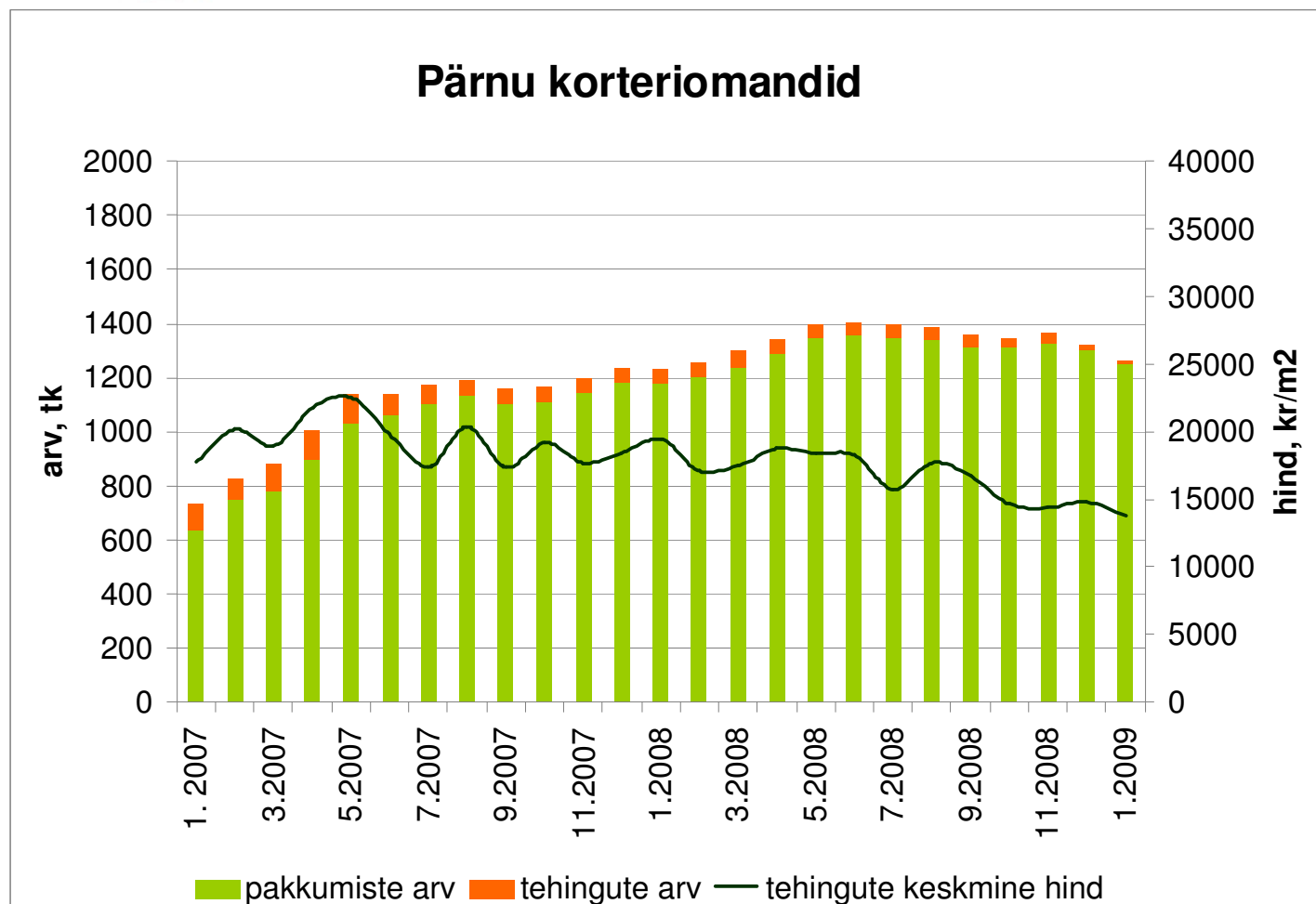
Tehingute arv on langenud 83%,  
tehinguhind 31%



Allikad: Maa-amet, City24, Pindi Kinnisvara



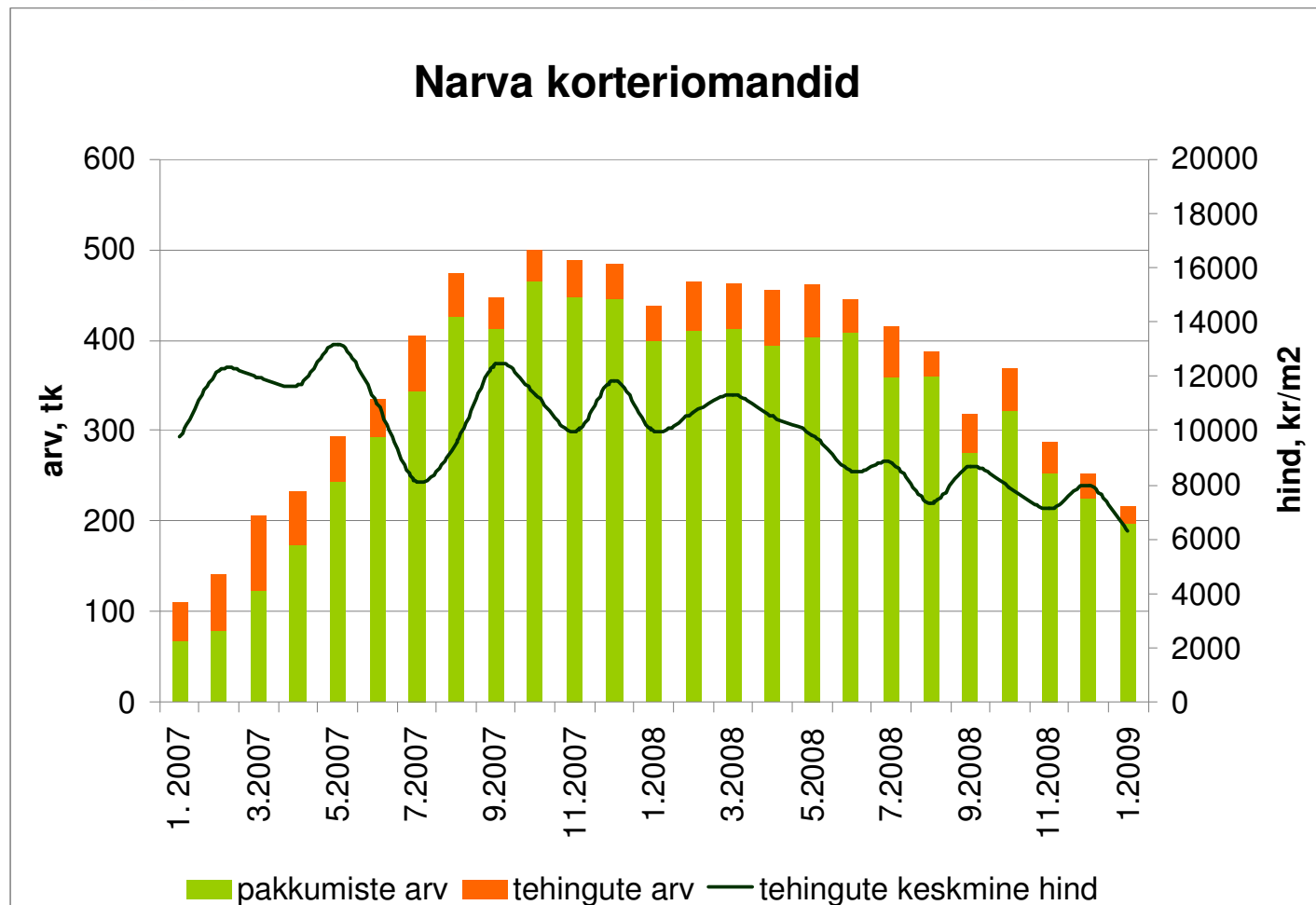
Tehingute arv on langenud 87%,  
tehinguhind 39%



Allikad: Maa-amet, City24, Pindi Kinnisvara



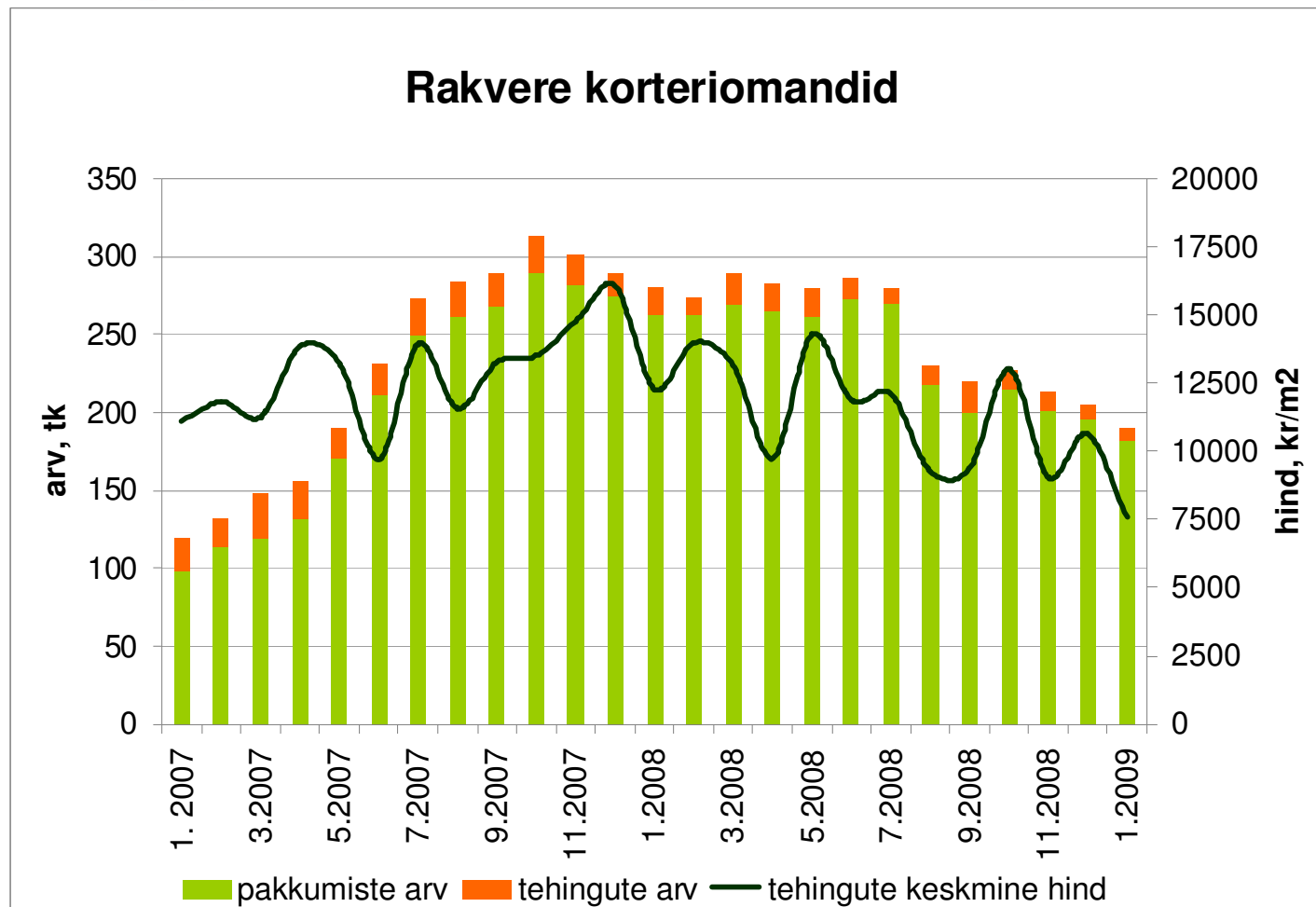
Tehingute arv on langenud 76%,  
tehinguhind 52%



Allikad: Maa-amet, City24, Pindi Kinnisvara



Tehingute arv on langenud 72%,  
tehinguhind 53%

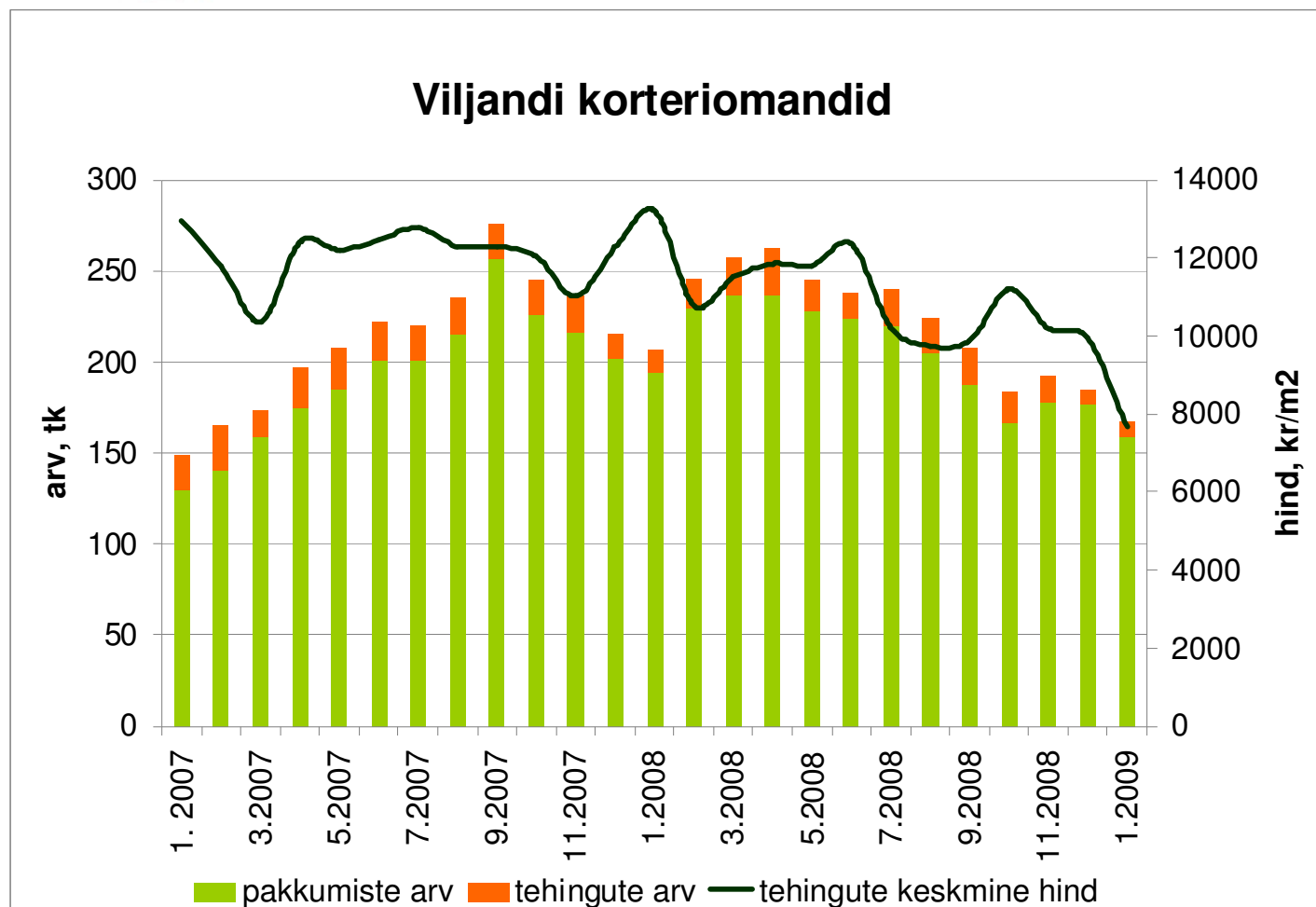


Allikad: Maa-amet, City24, Pindi Kinnisvara





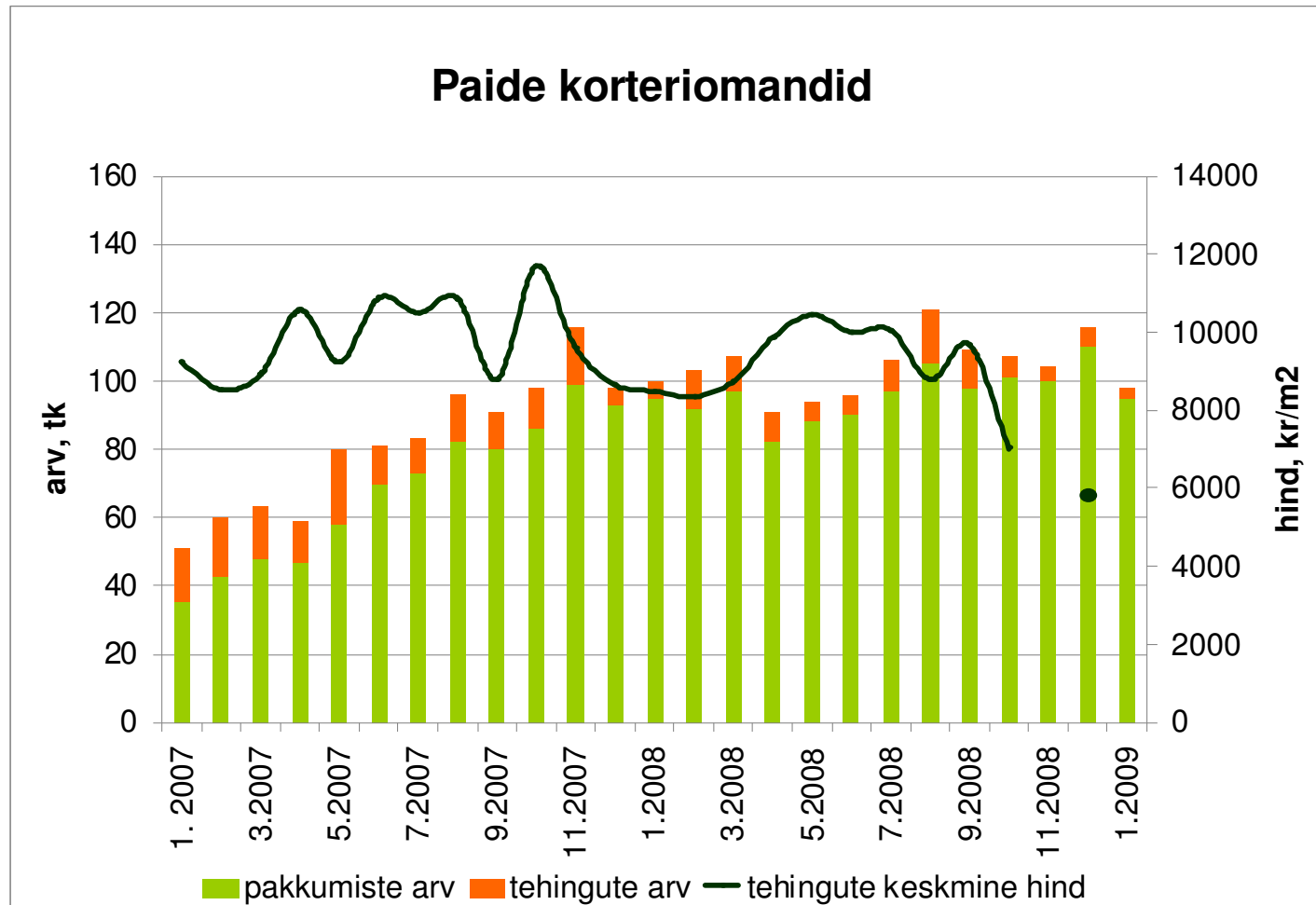
Tehingute arv on langenud 69%,  
tehinguhind 42%



Allikad: Maa-amet, City24, Pindi Kinnisvara



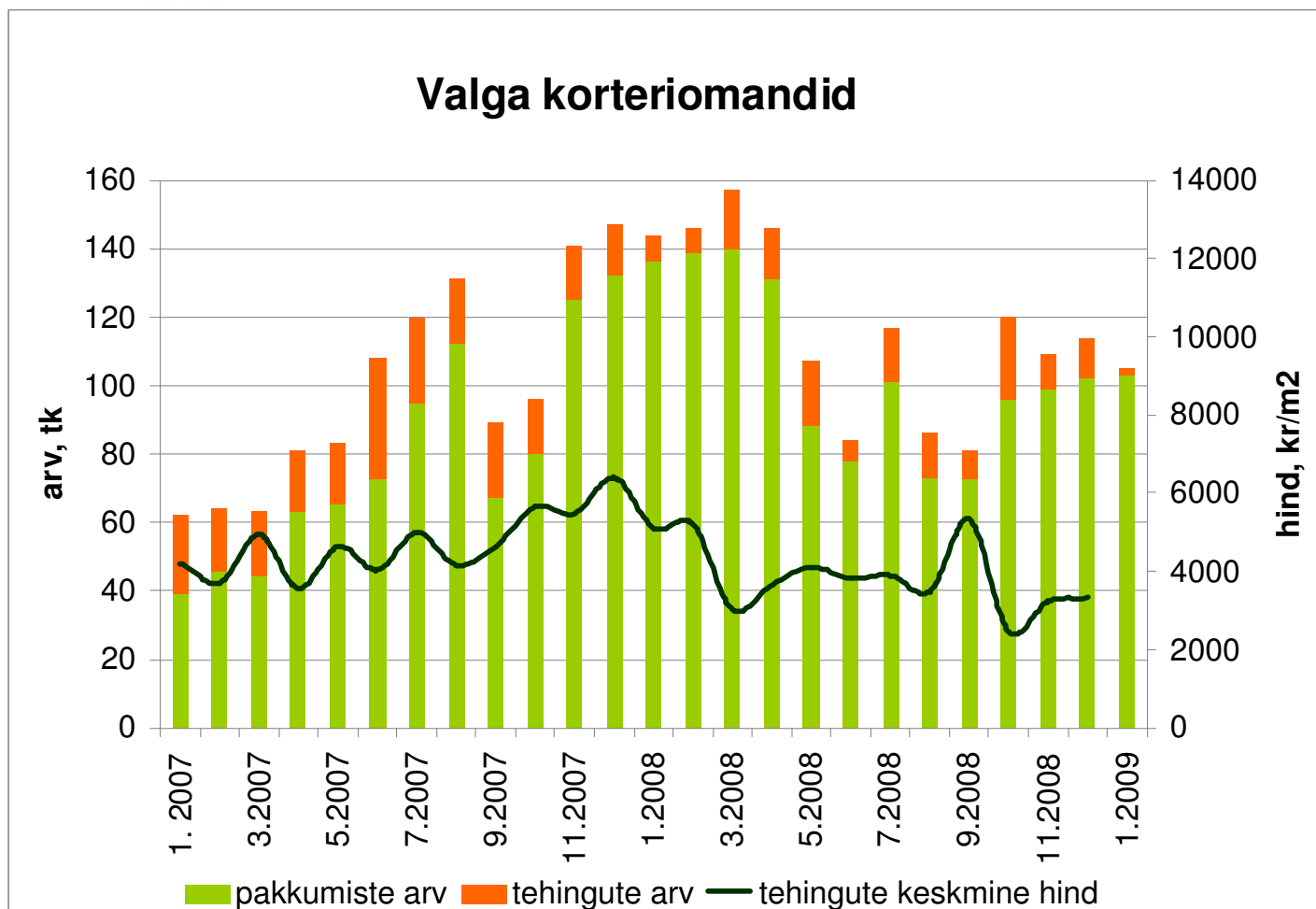
Tehingute arv on langenud 86%  
tehinguhind 50%



Allikad: Maa-amet, City24, Pindi Kinnisvara



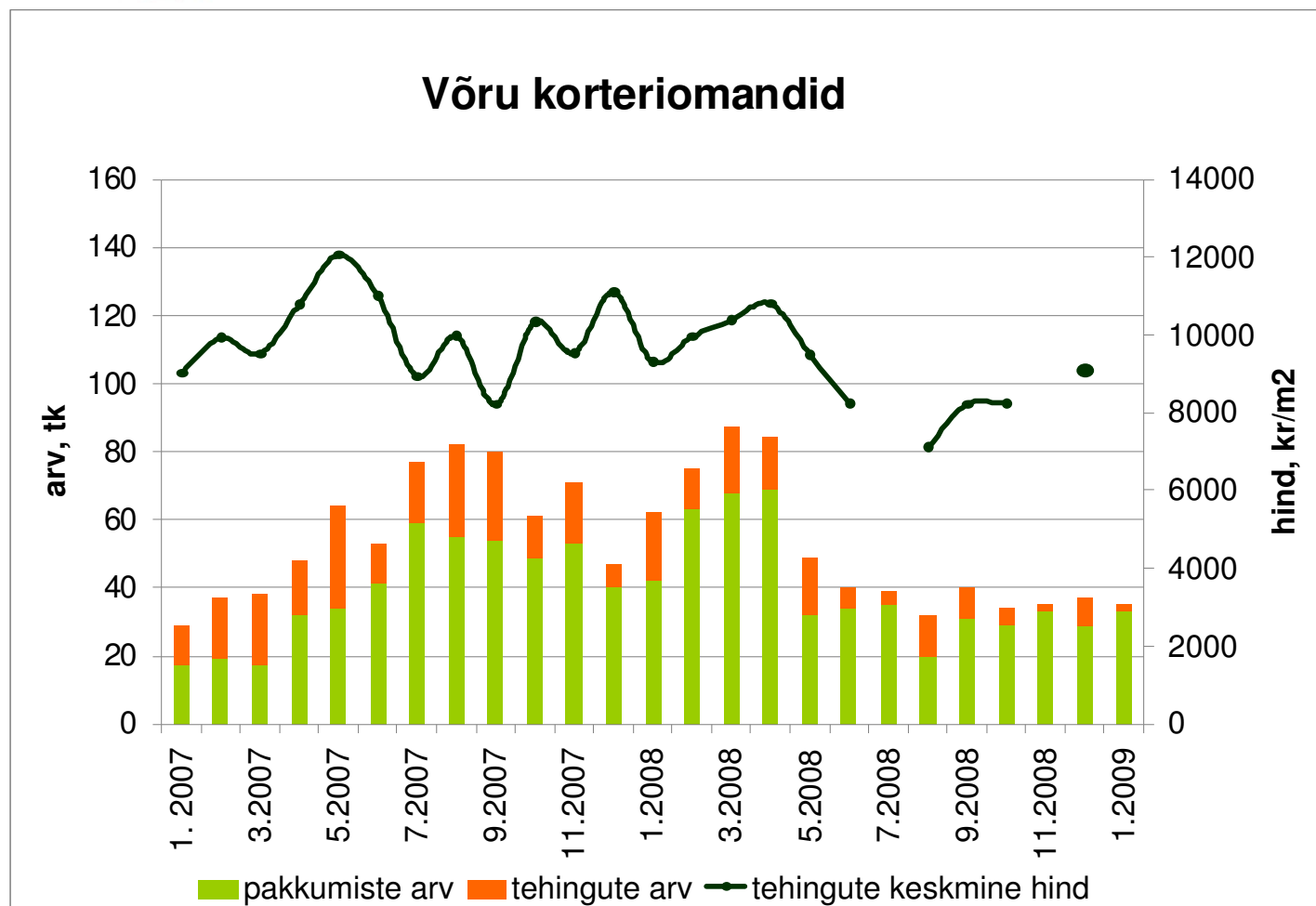
Tehingute arv on langenud 94%  
tehinguhind 48%



Allikad: Maa-amet, City24, Pindi Kinnisvara



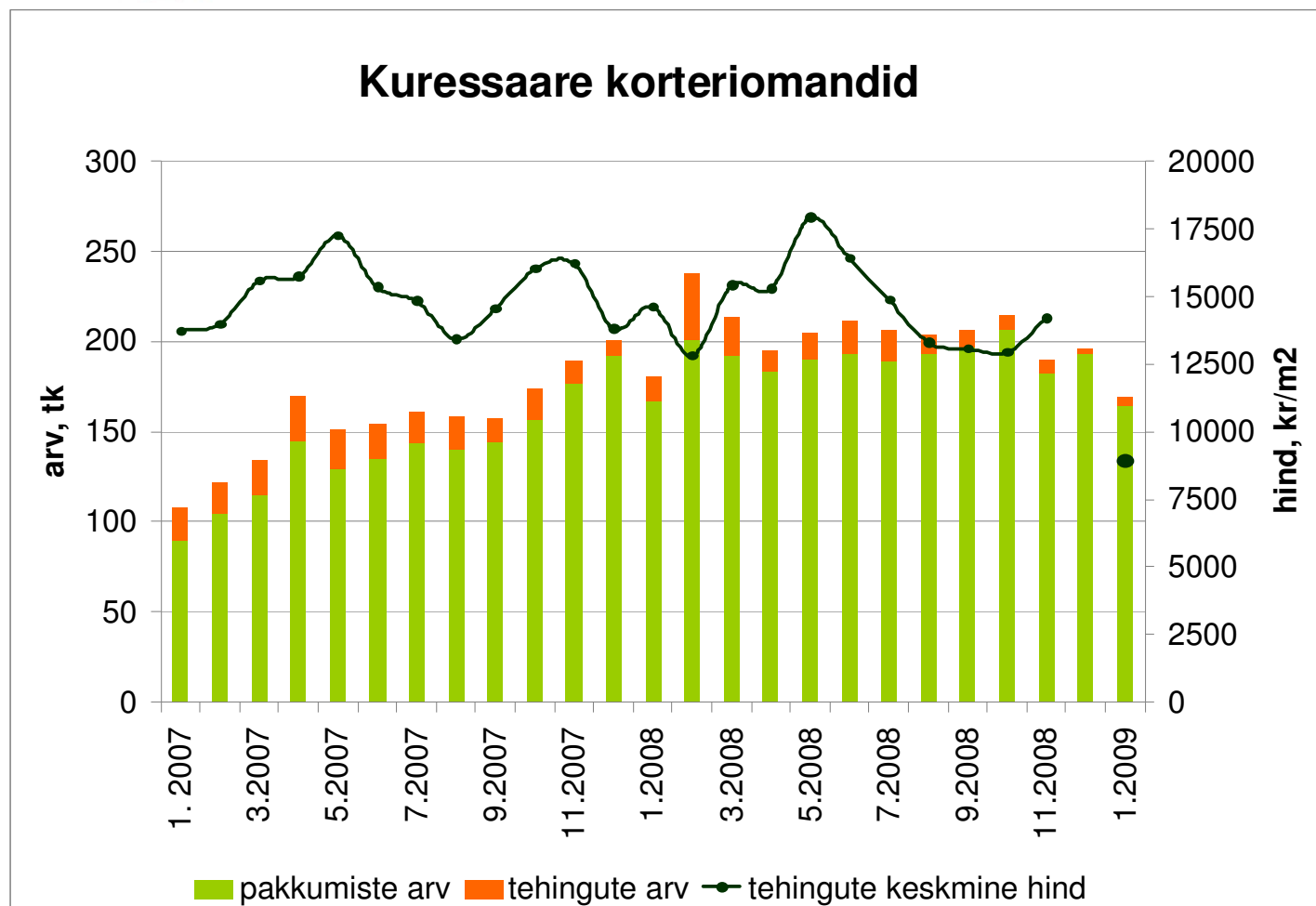
Tehingute arv on langenud 93%  
tehinguhind 25%



Allikad: Maa-amet, City24, Pindi Kinnisvara



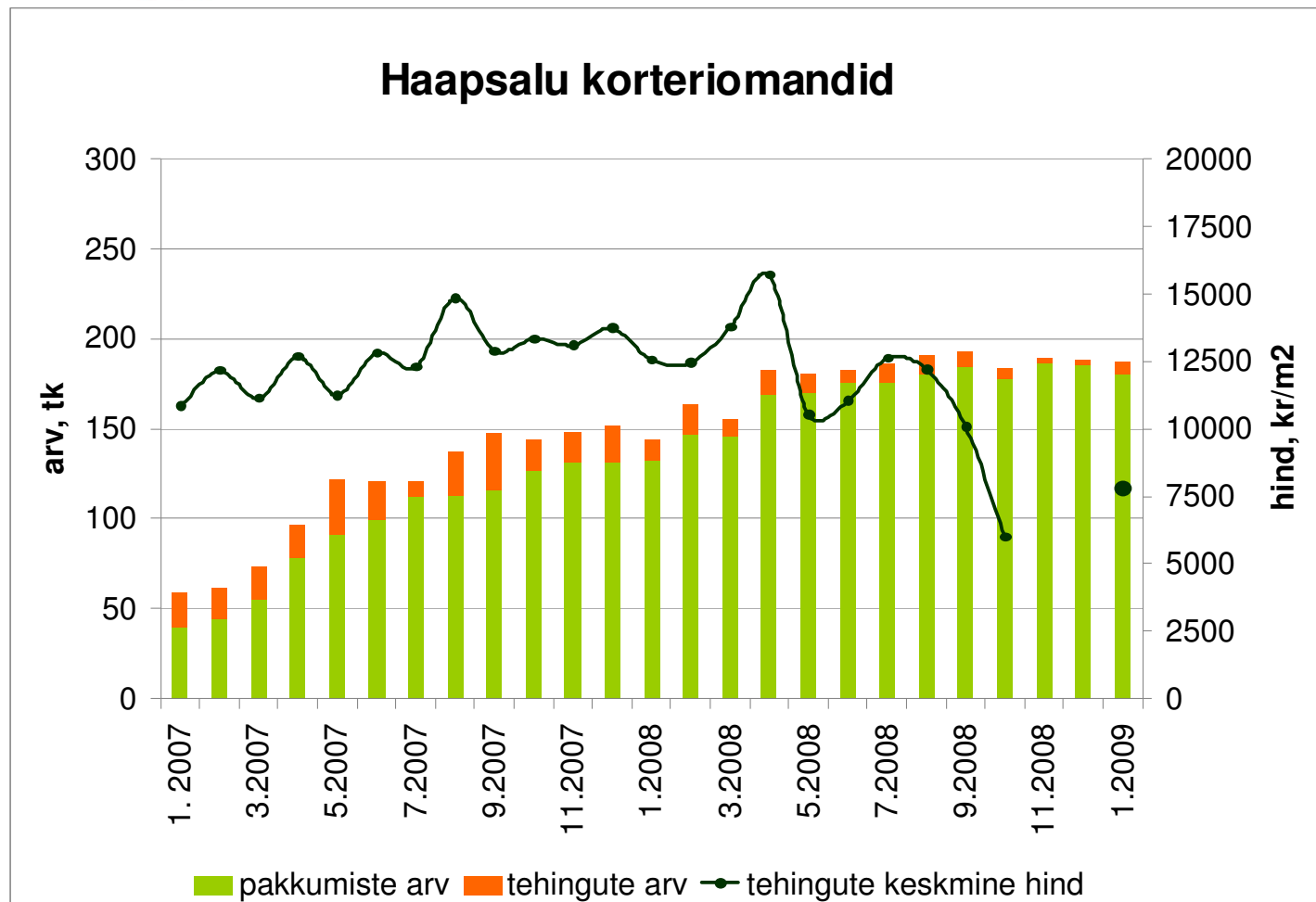
Tehingute arv on langenud 86%  
tehinguhind 50%



Allikad: Maa-amet, City24, Pindi Kinnisvara



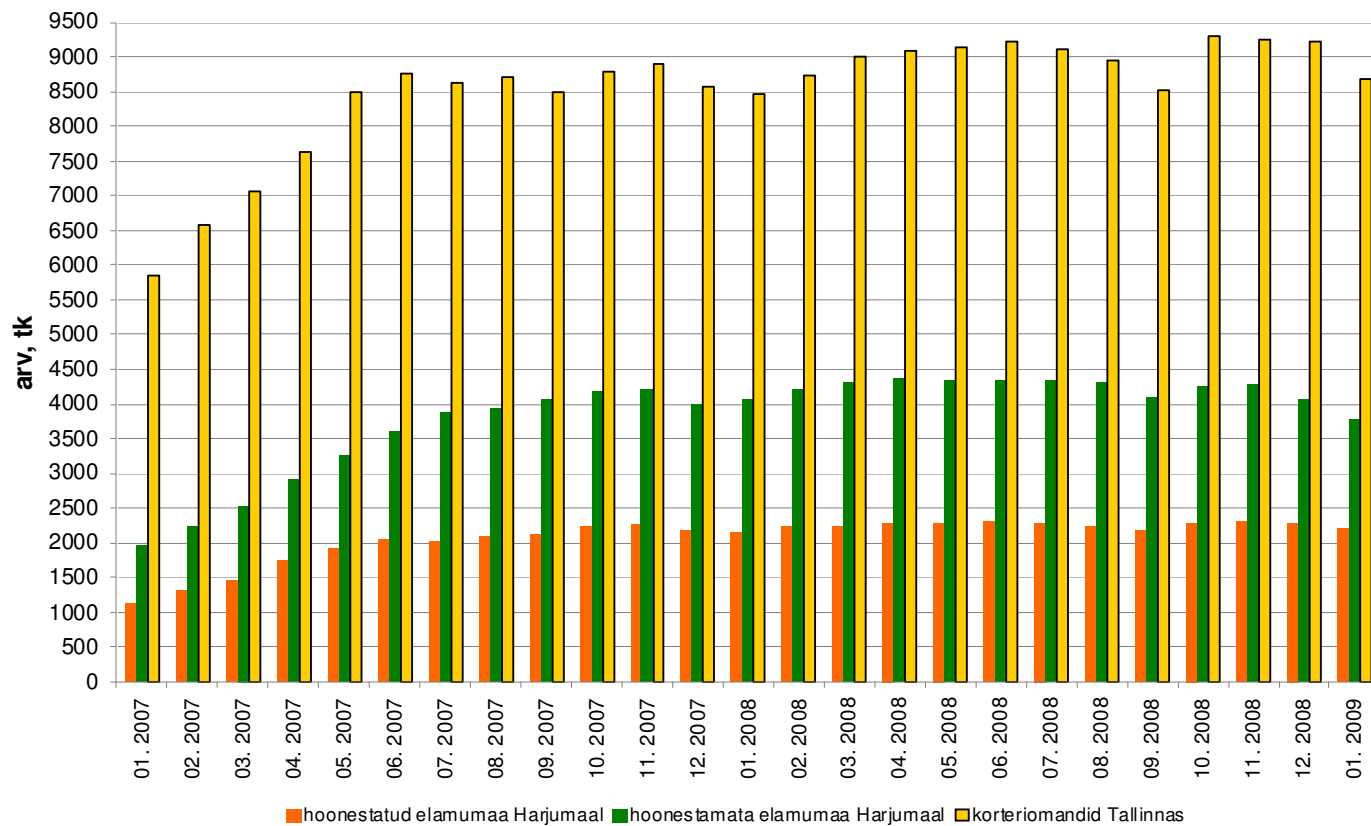
Tehingute arv on langenud 78%  
tehinguhind 50%



Allikad: Maa-amet, City24, Pindi Kinnisvara

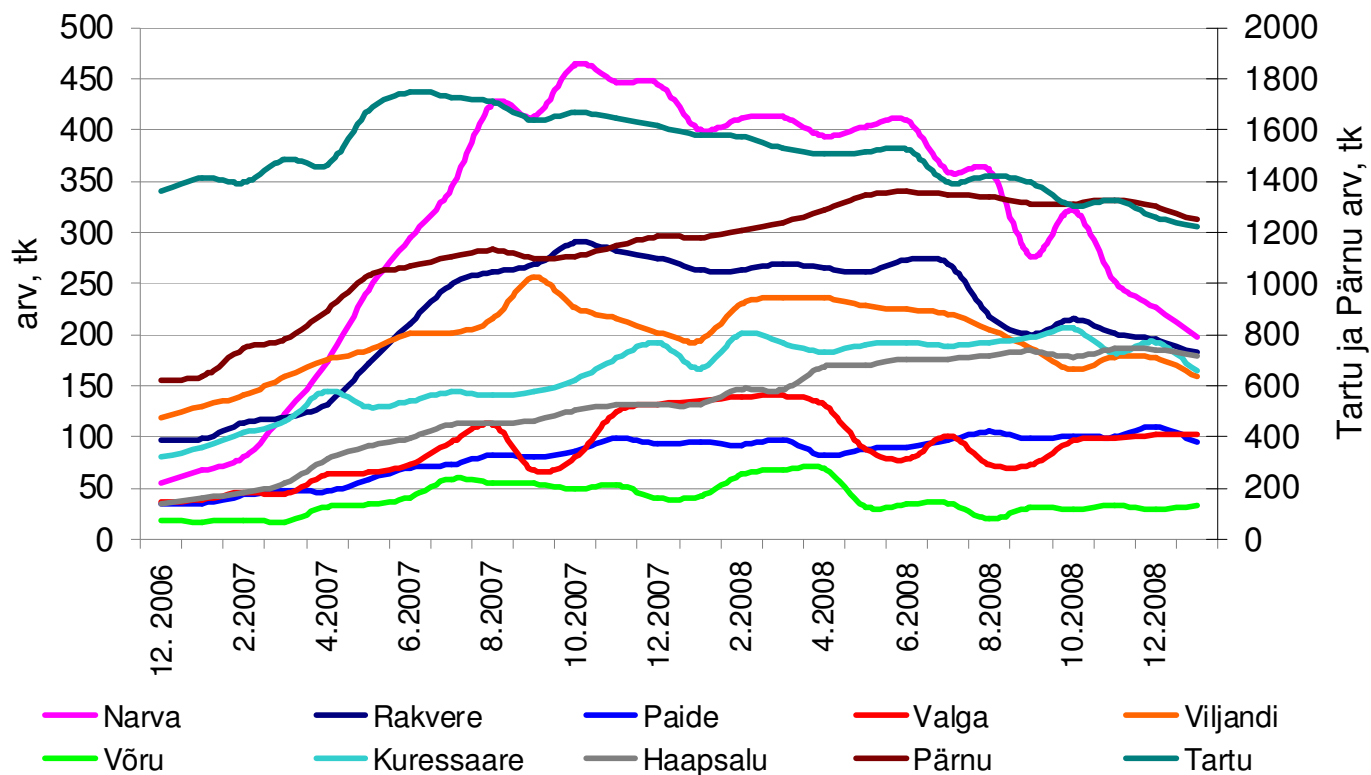


## Elukondliku kinnisvara pakkumiste arv





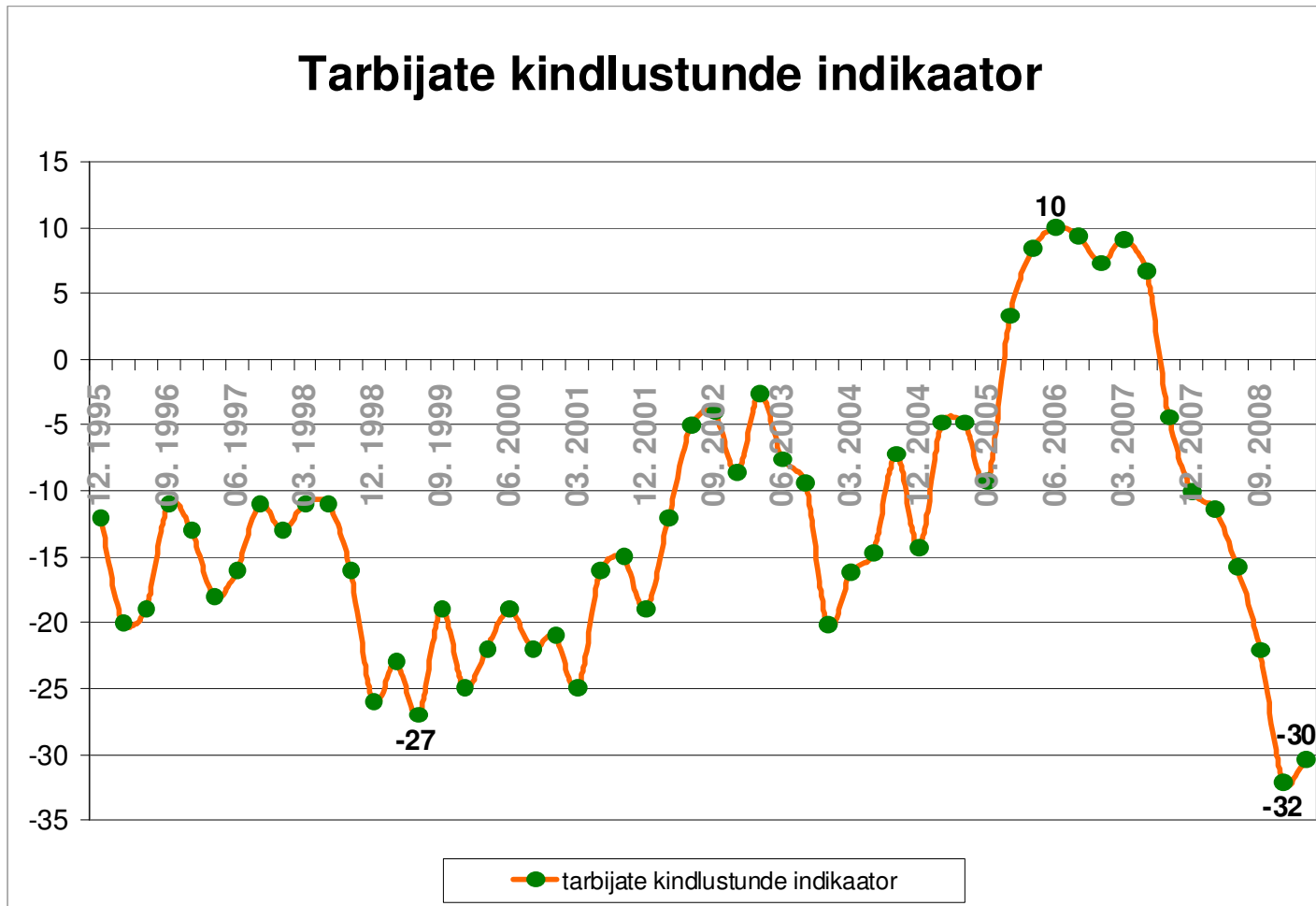
## Korteriomandite pakkumiste arv Eesti linnades (City24 baasil)





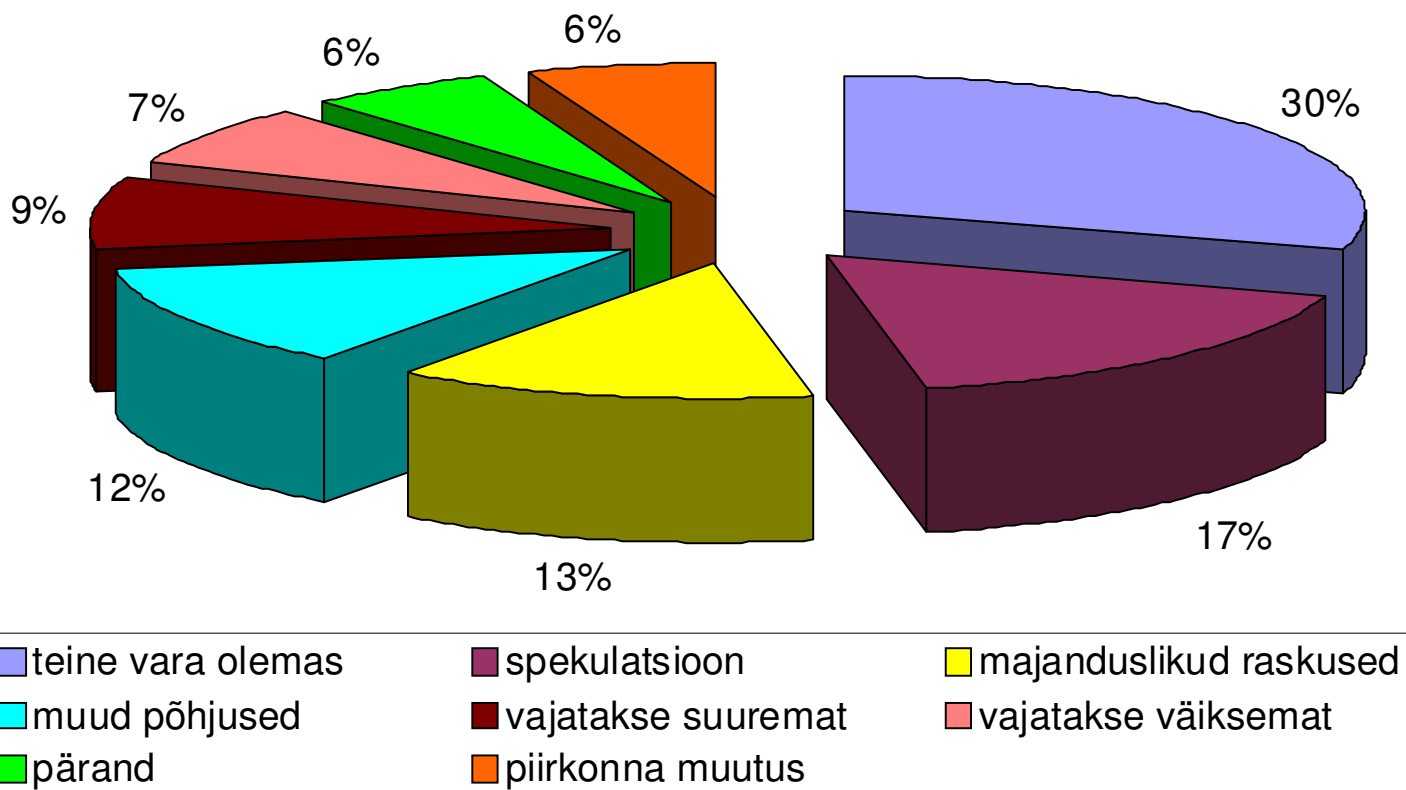


## Tarbijate kindlustunde indikaator



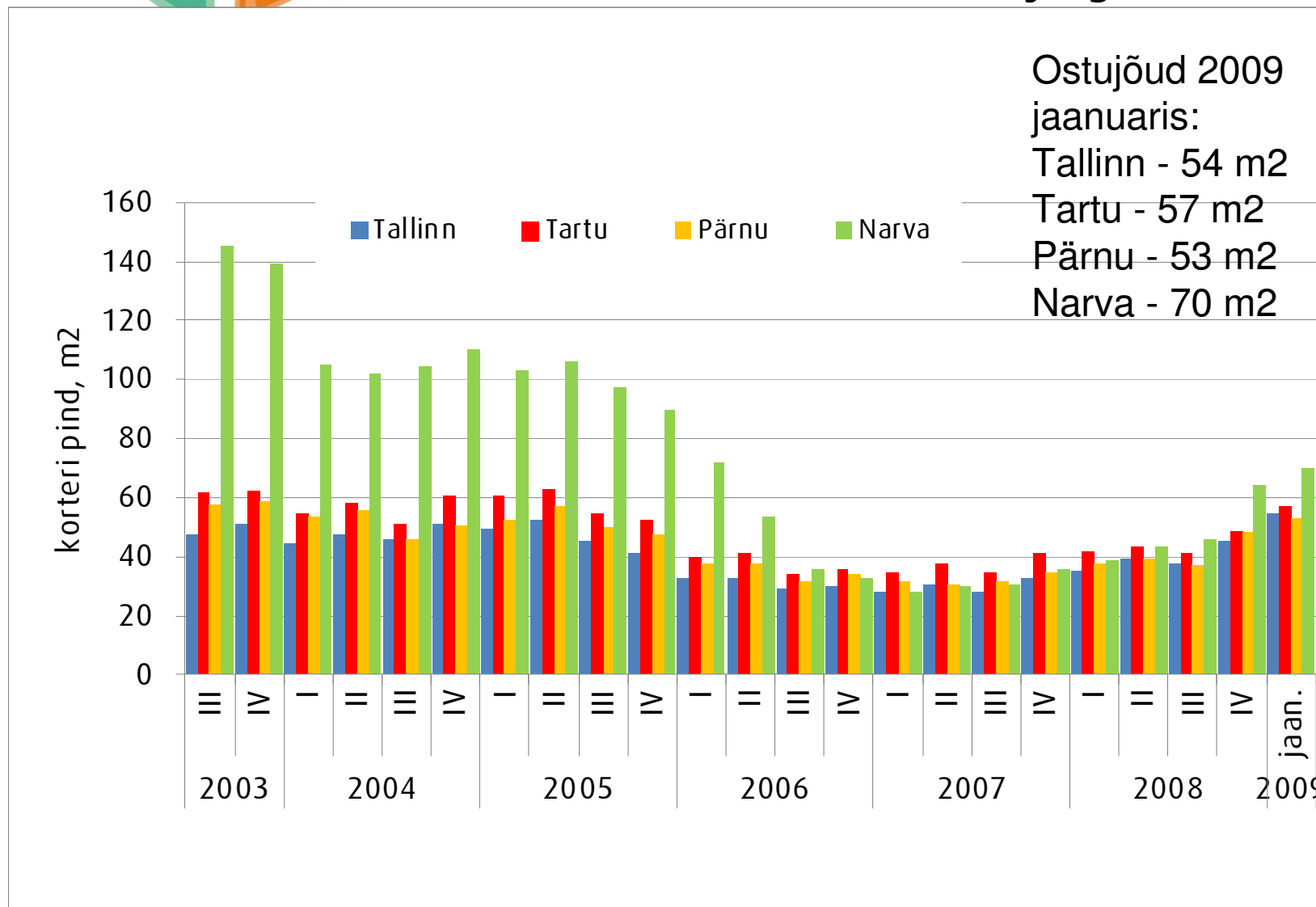


## Müügi peamised põhjused



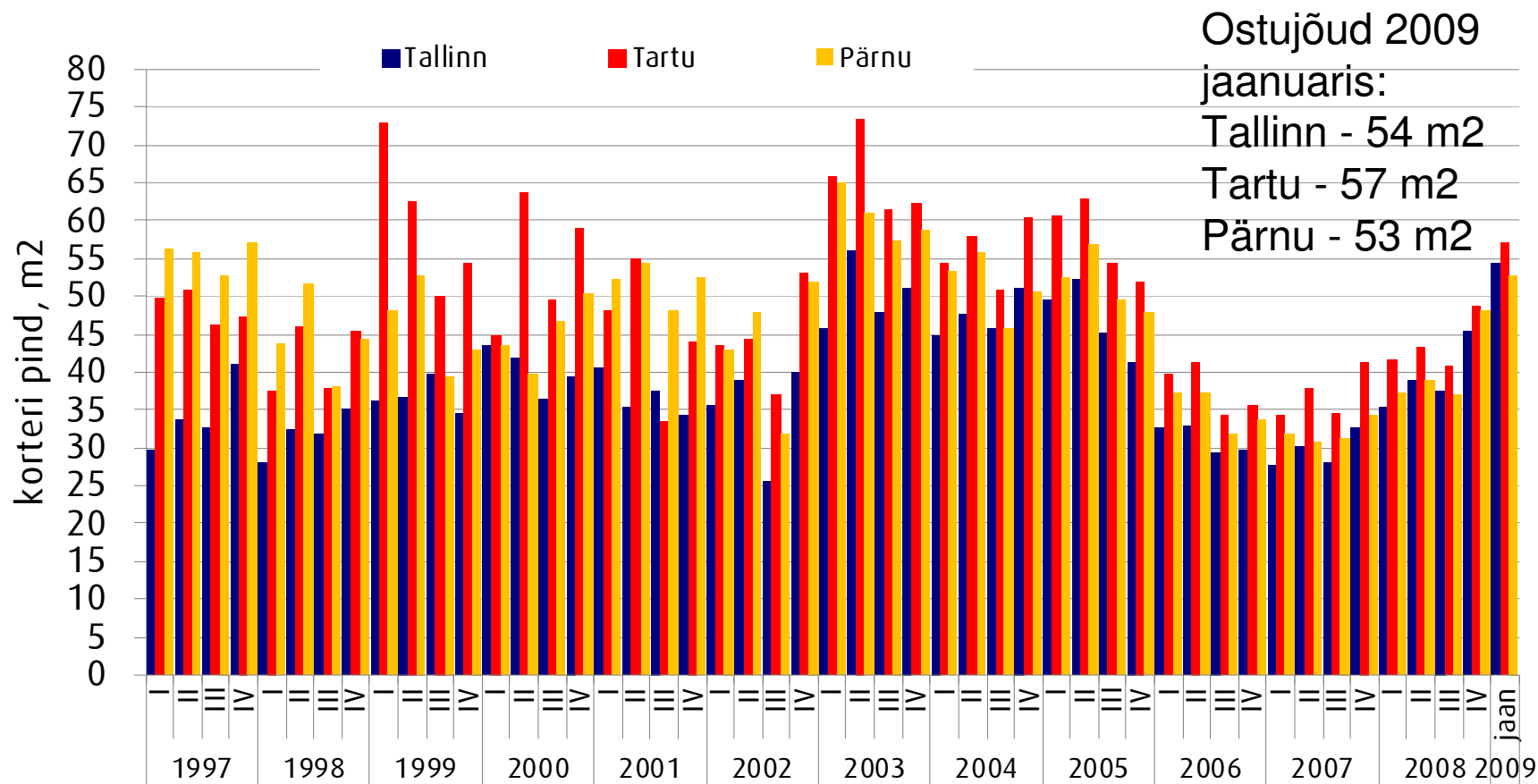


## Kinnisvara ostujõud keskmise palga baasil arvatatud laenuvõime järgi:

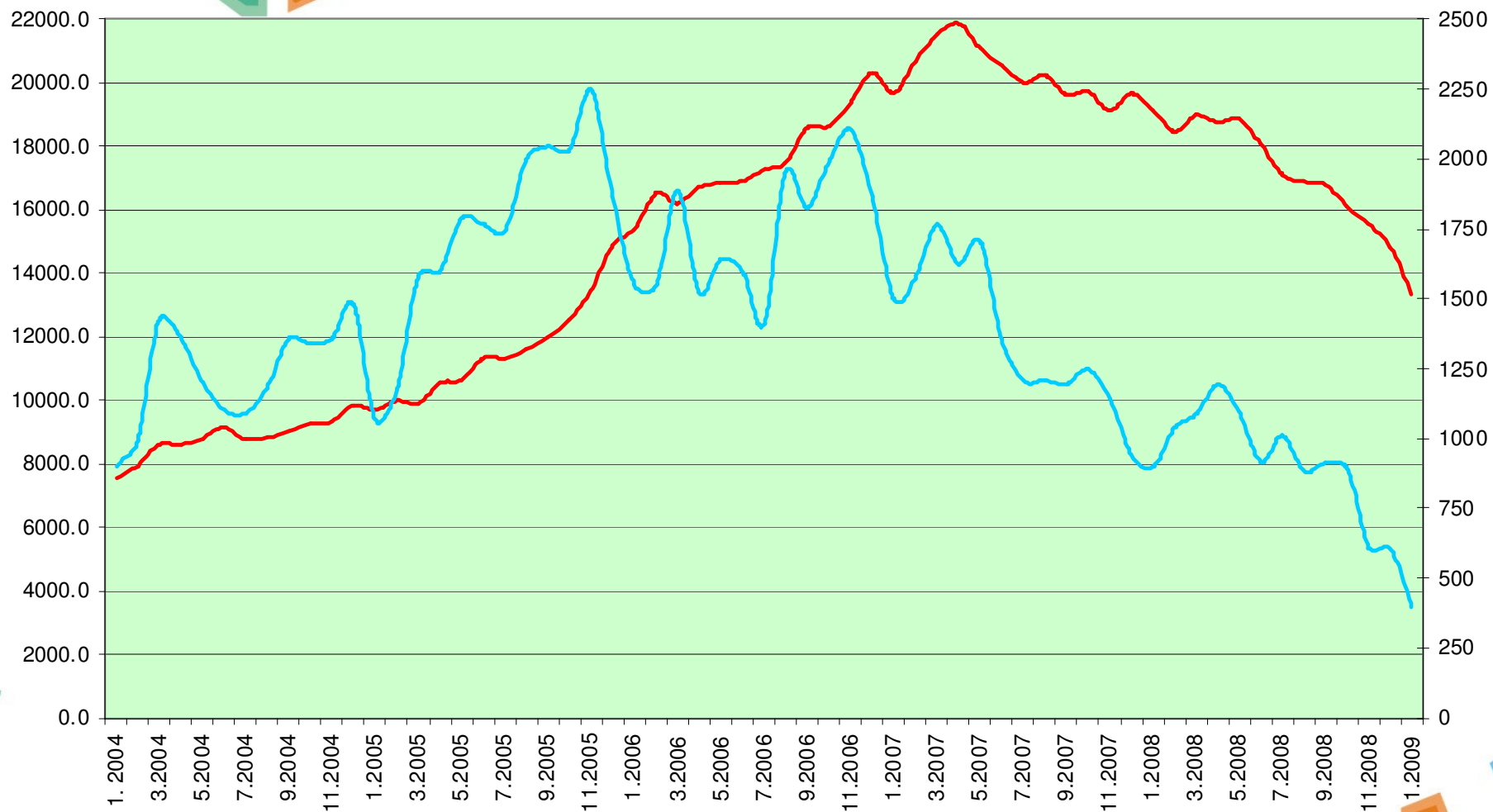




## Kinnisvara ostujõud keskmise palga baasil arvatatud laenuvõime järgi:



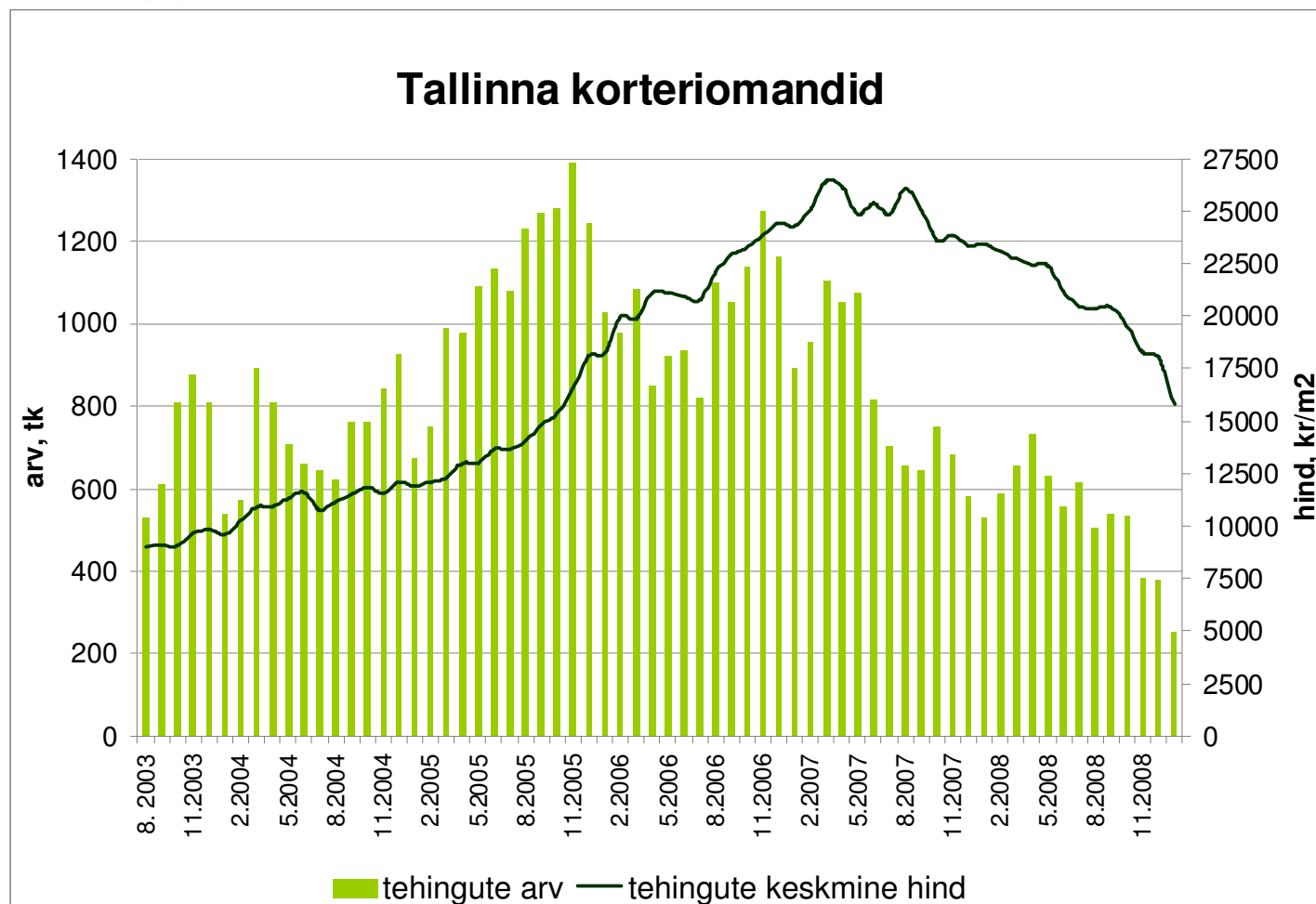
# PINDI HINNAINDEKS



— Eesti 17 suurema linna korterite ruutmeetri kaalutud keskmine hind (allikad: Pindi Kinnisvara andmebaasid, Maa-amet, Statistikaamet)  
— Eesti 17 suurema linna tehingute arv (allikas: Maa-amet)



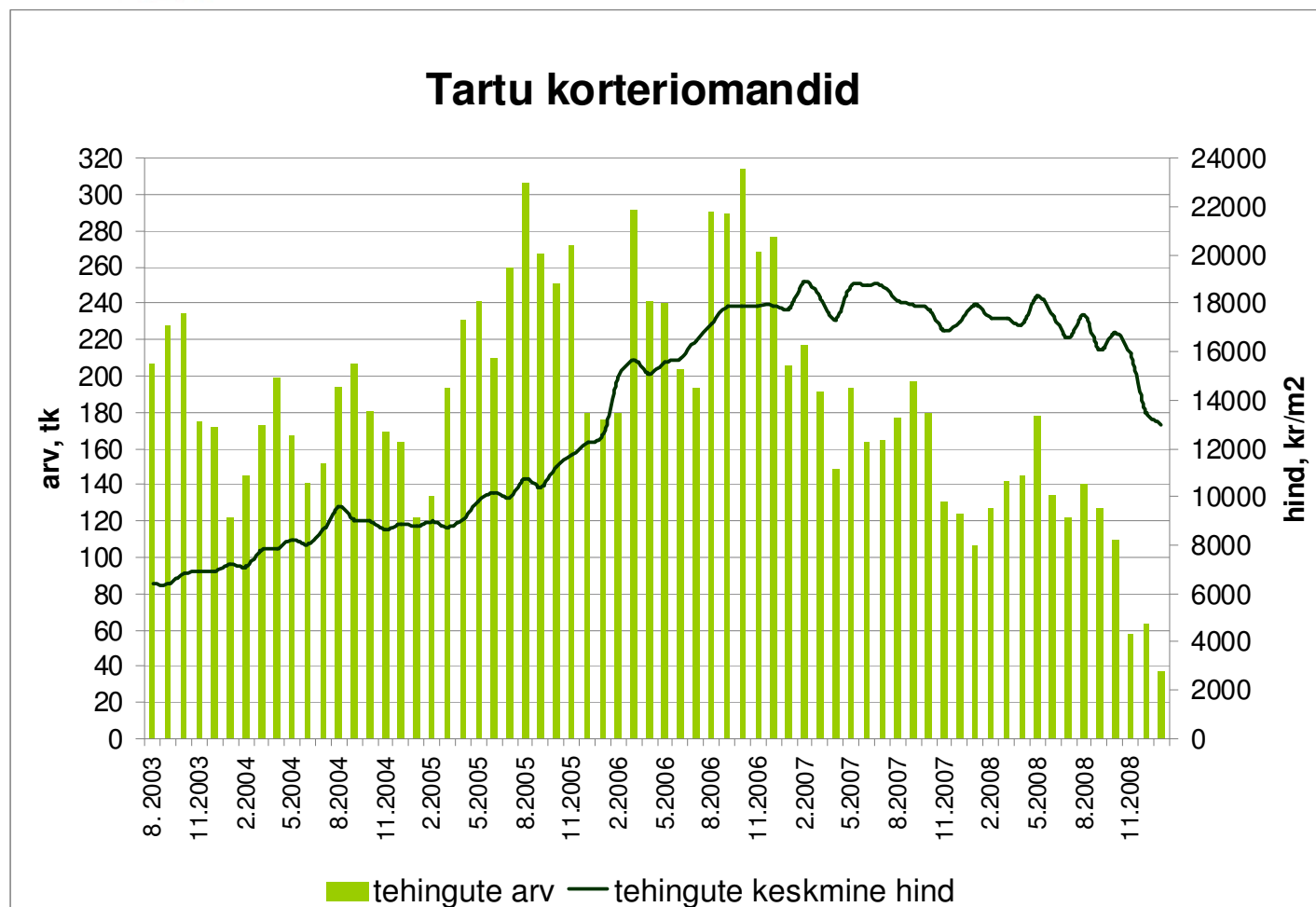
Tehingute arv on langenud 82%,  
tehinguhind 40%



Allikas: Maa-amet, Pindi Kinnisvara



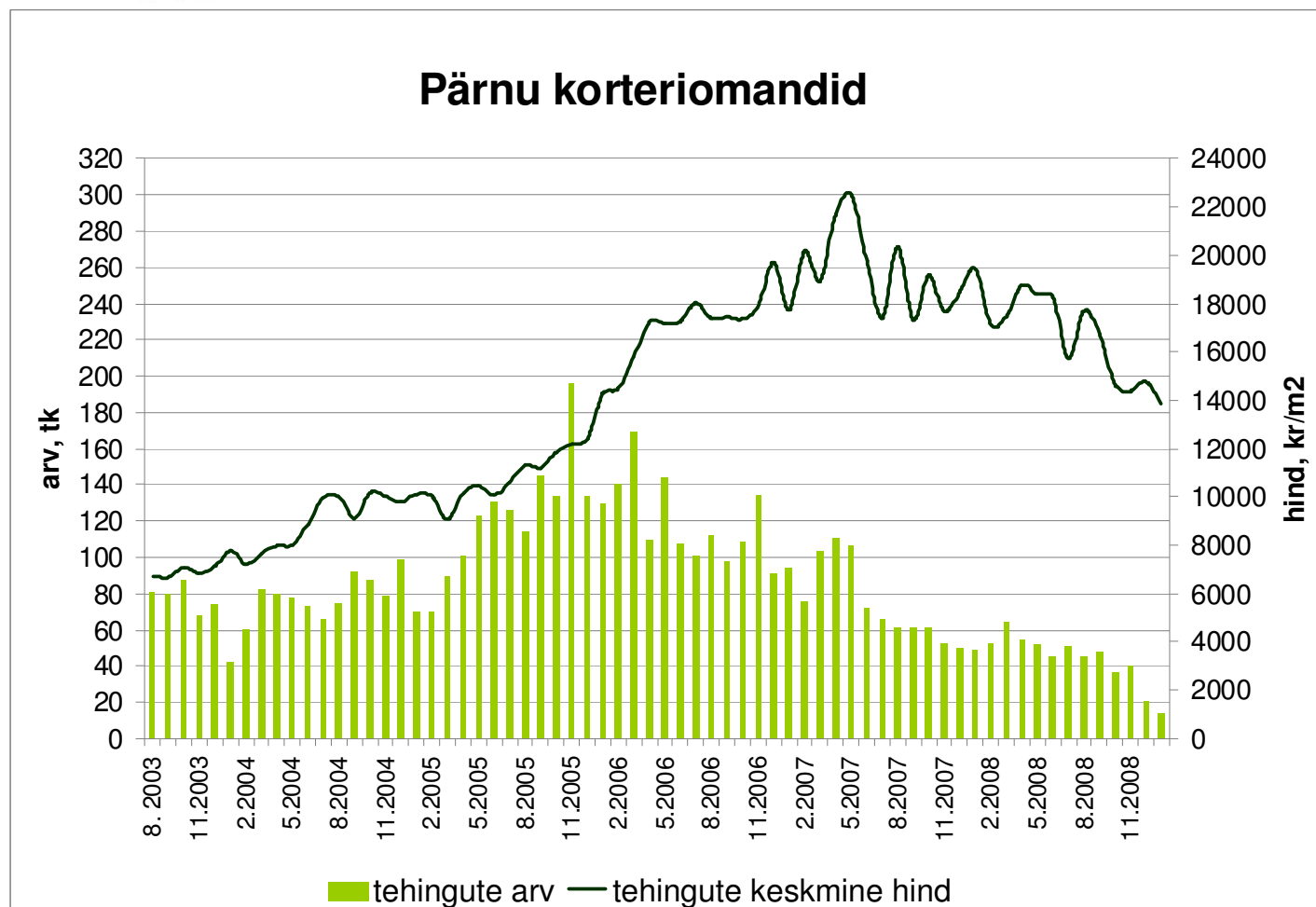
Tehingute arv on langenud 88%,  
tehinguhind 31%



Allikas: Maa-amet, Pindi Kinnisvara



Tehingute arv on langenud 93%,  
tehinguhind 39%

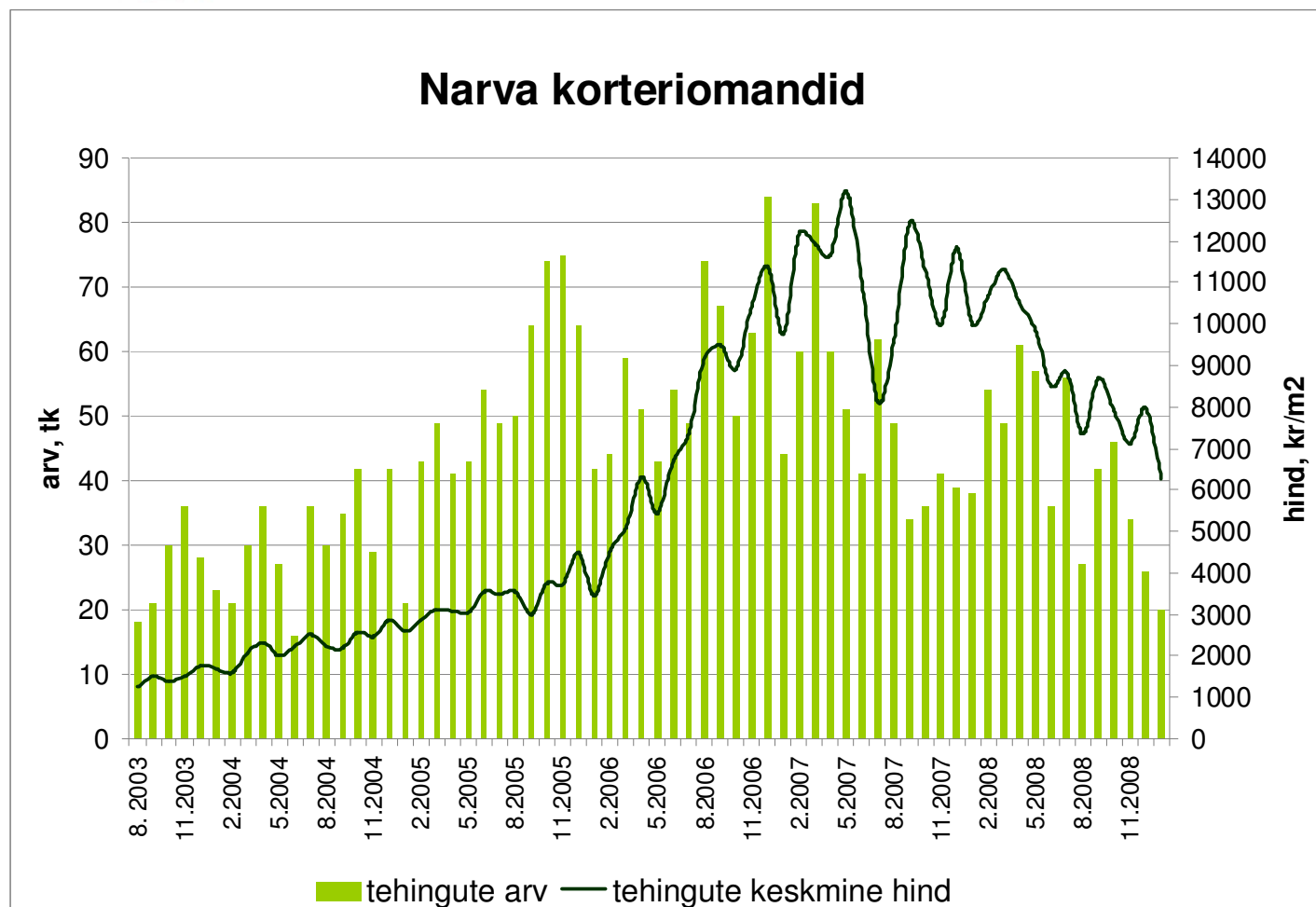


Allikas: Maa-amet, Pindi Kinnisvara





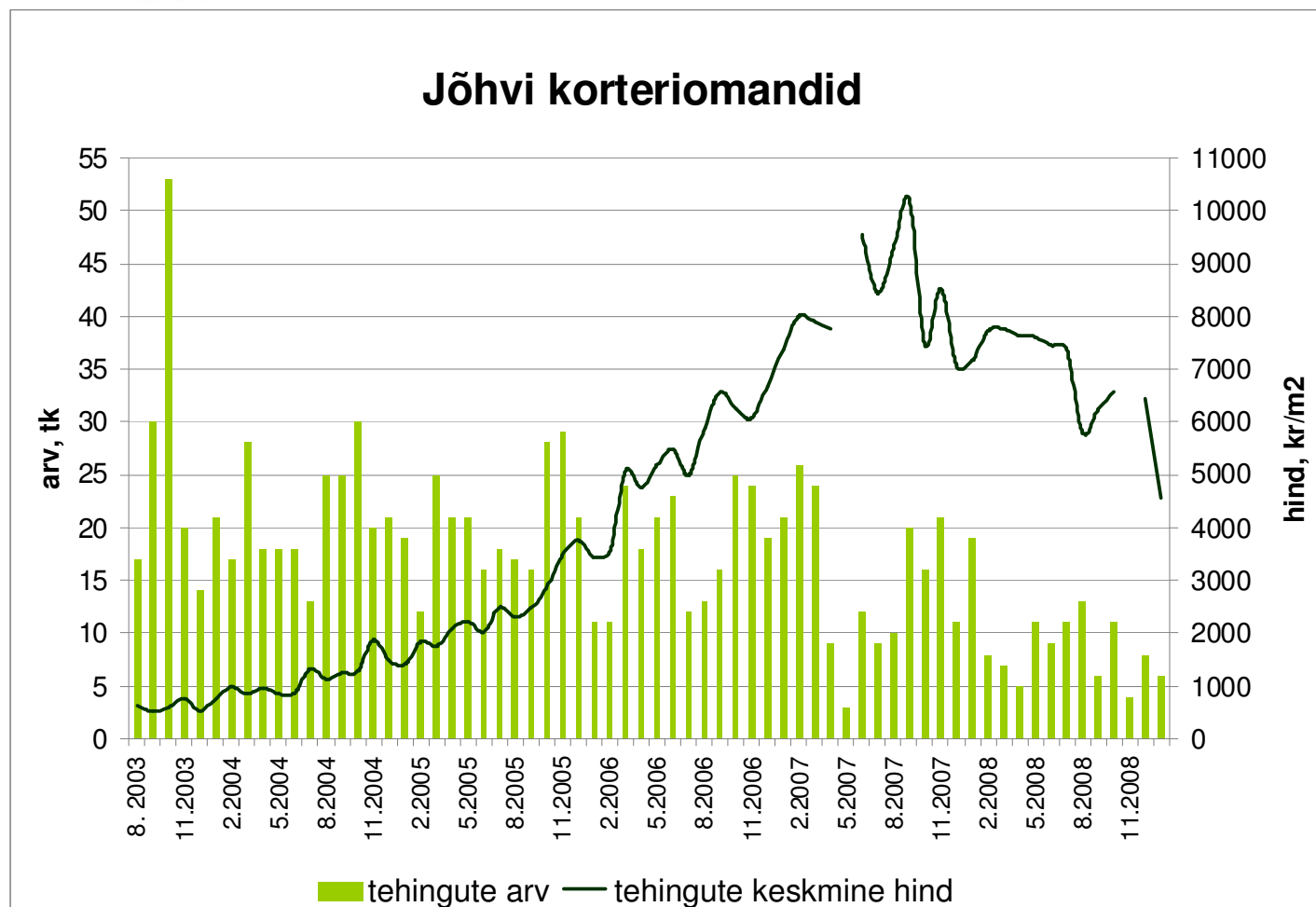
Tehingute arv on langenud 76%,  
tehinguhind 52 %



Allikas: Maa-amet, Pindi Kinnisvara



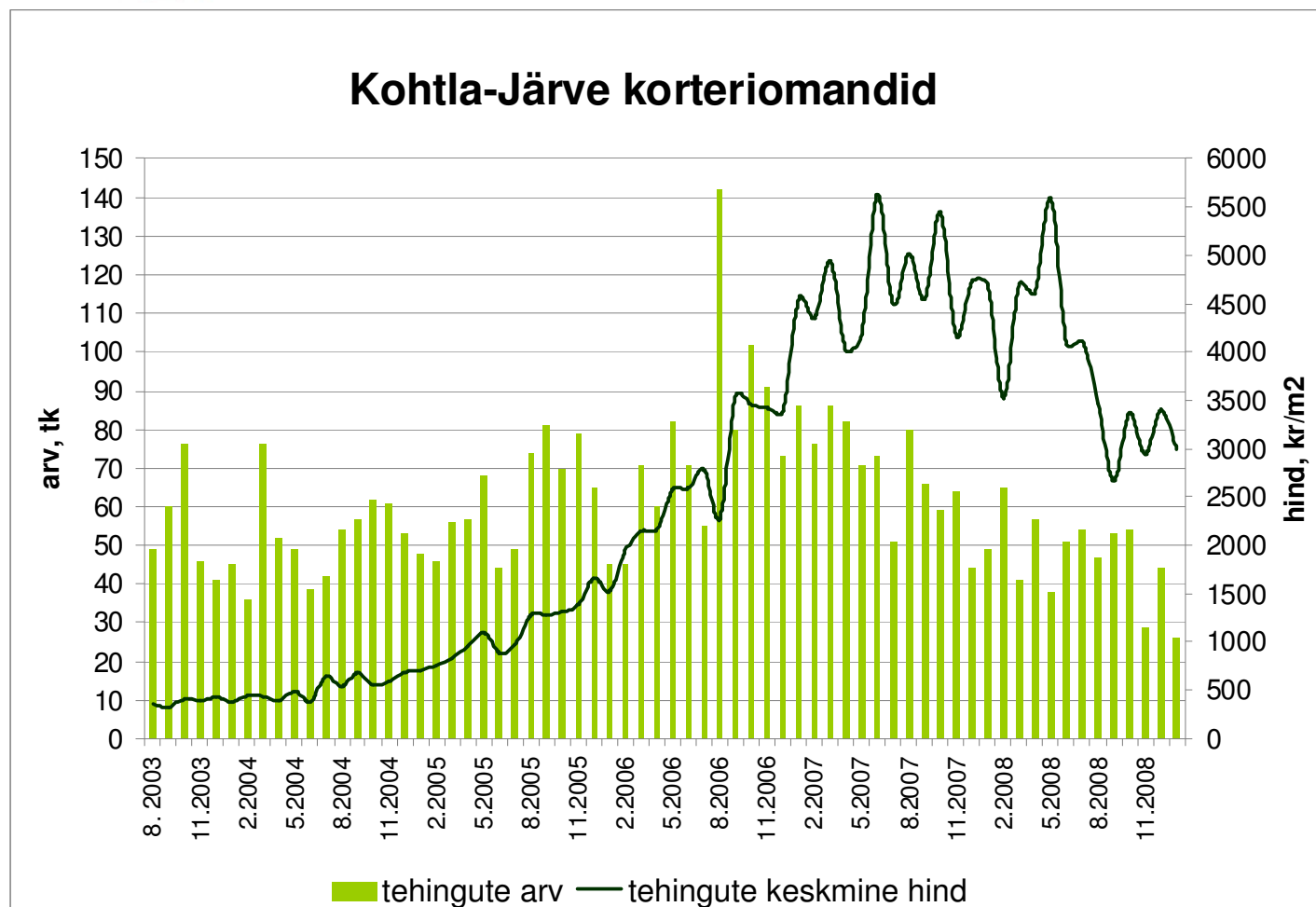
Tehingute arv on langenud 89%,  
tehinguhind 55%



Allikas: Maa-amet, Pindi Kinnisvara



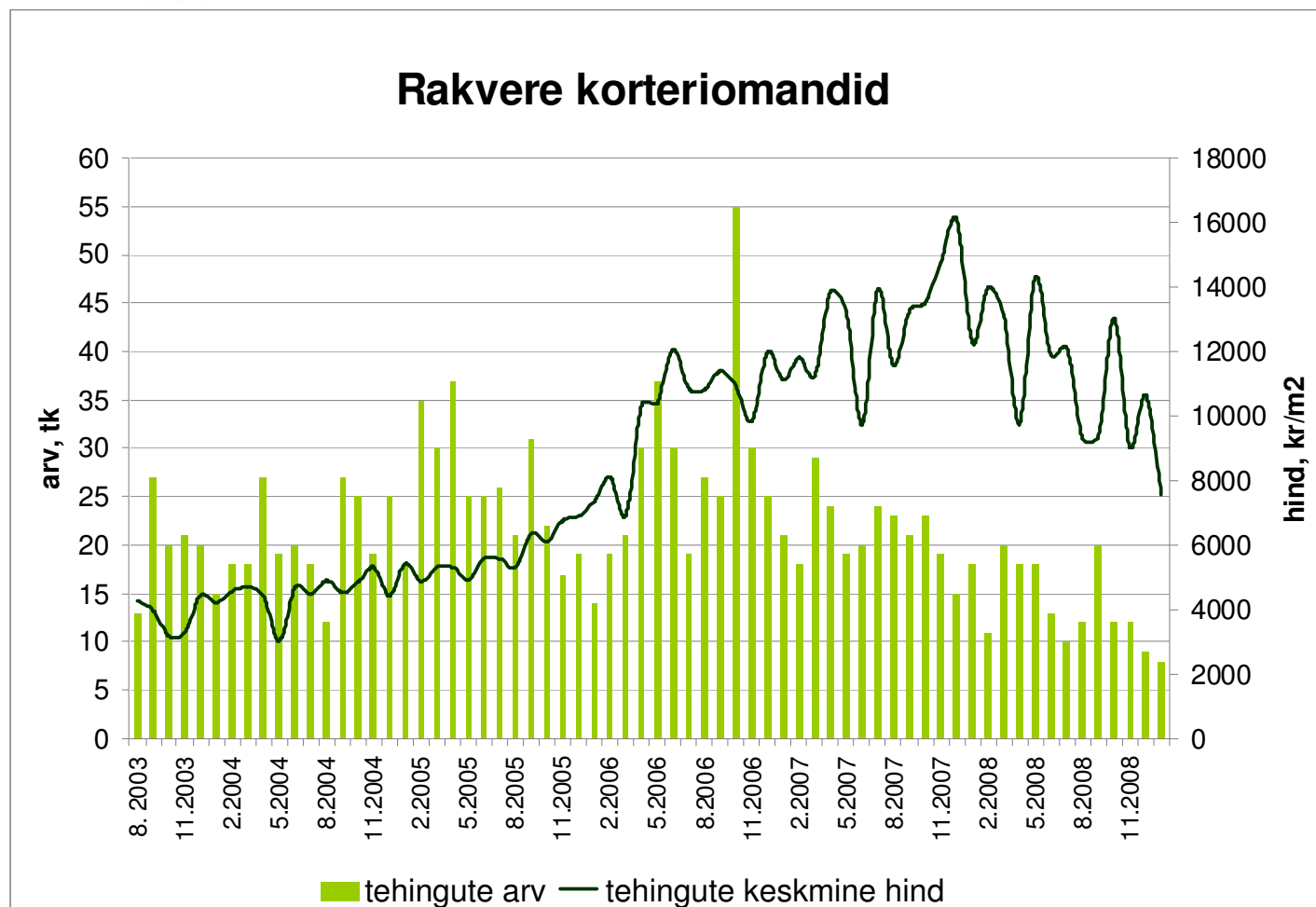
Tehingute arv on langenud 82%,  
tehinguhind 47%



Allikas: Maa-amet, Pindi Kinnisvara



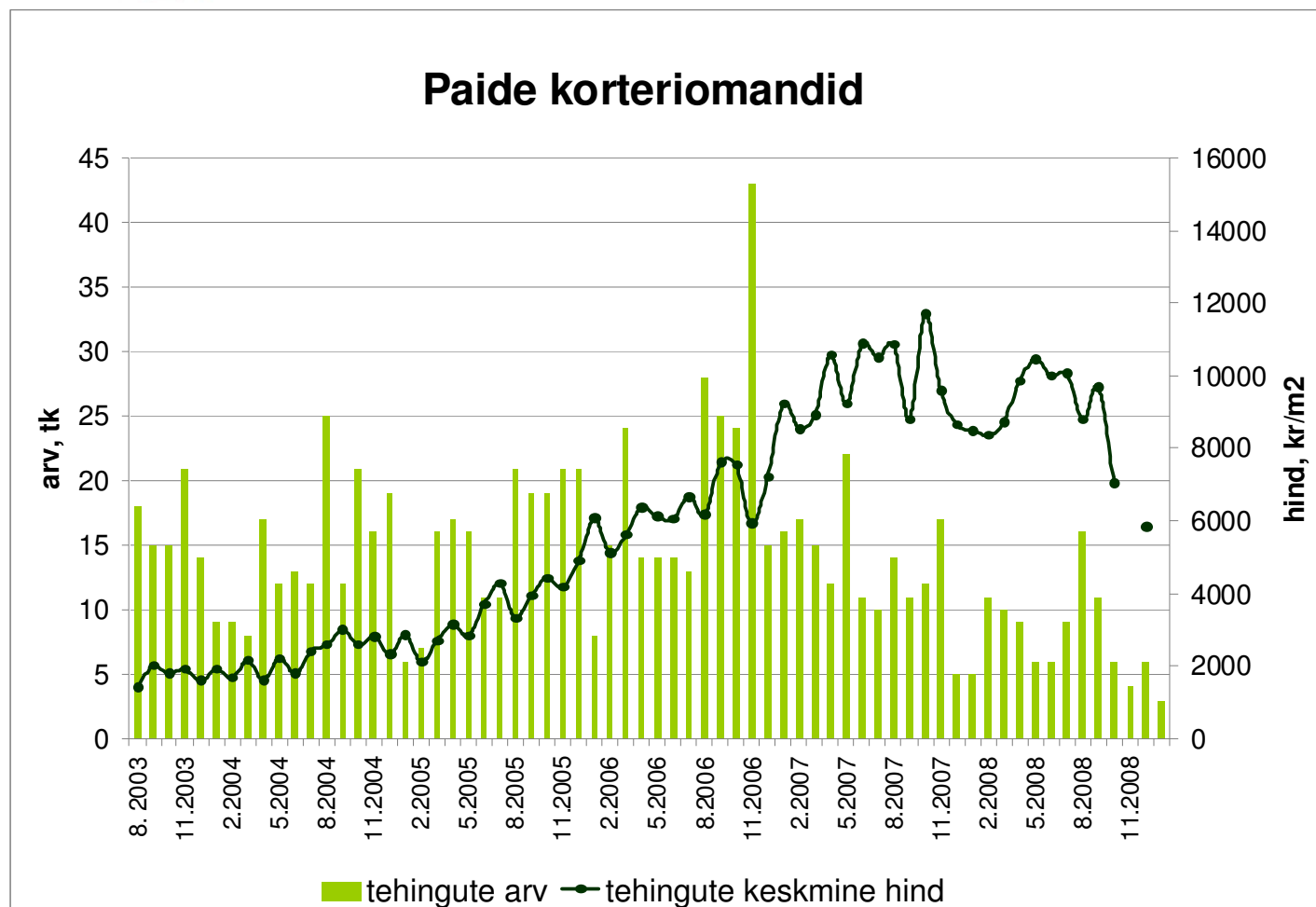
Tehingute arv on langenud 85%,  
tehinguhind 53%



Allikas: Maa-amet, Pindi Kinnisvara



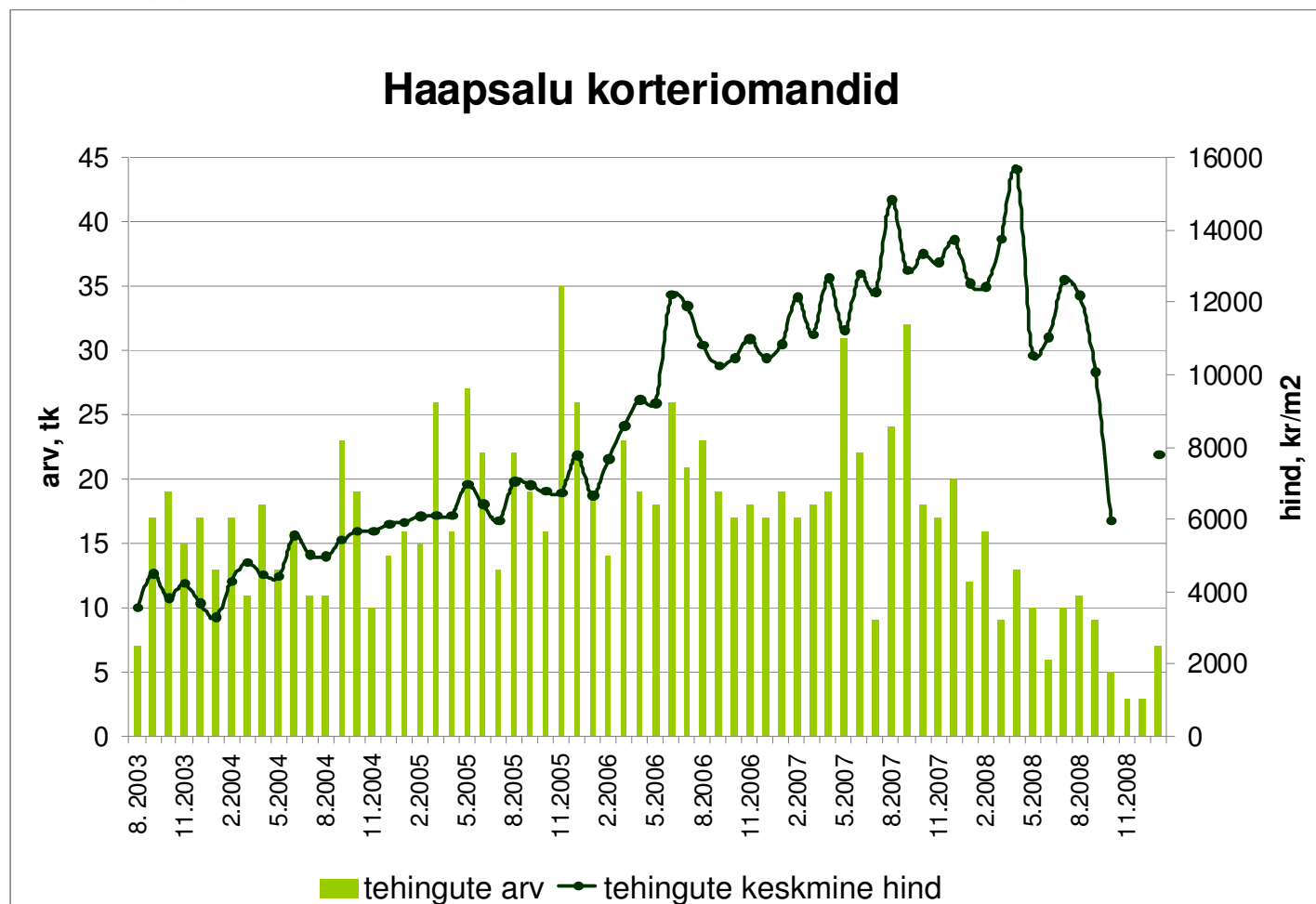
Tehingute arv on langenud 93%,  
tehinguhind 50%



Allikas: Maa-amet, Pindi Kinnisvara



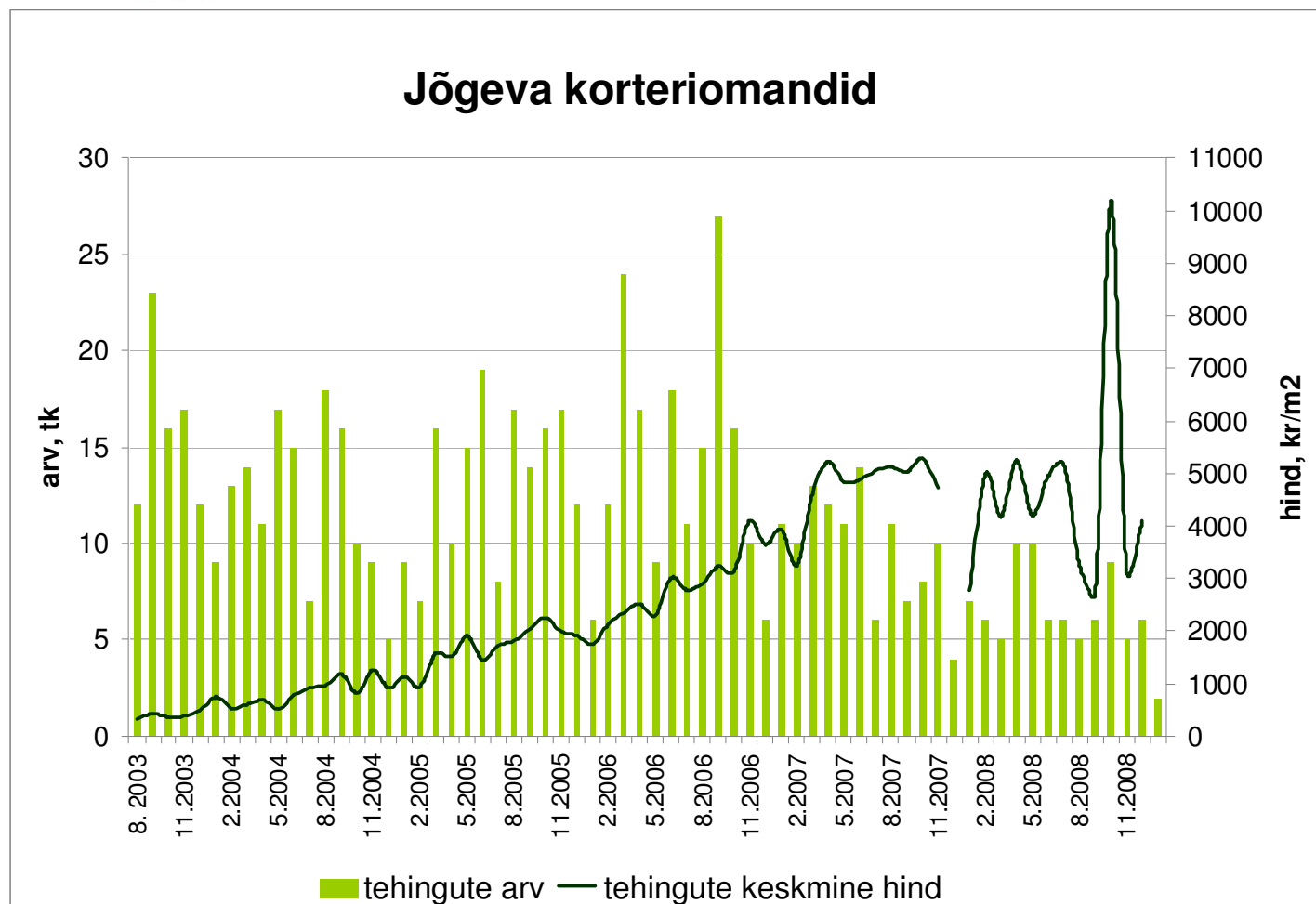
Tehingute arv on langenud 80%,  
tehinguhind 50%



Allikas: Maa-amet, Pindi Kinnisvara



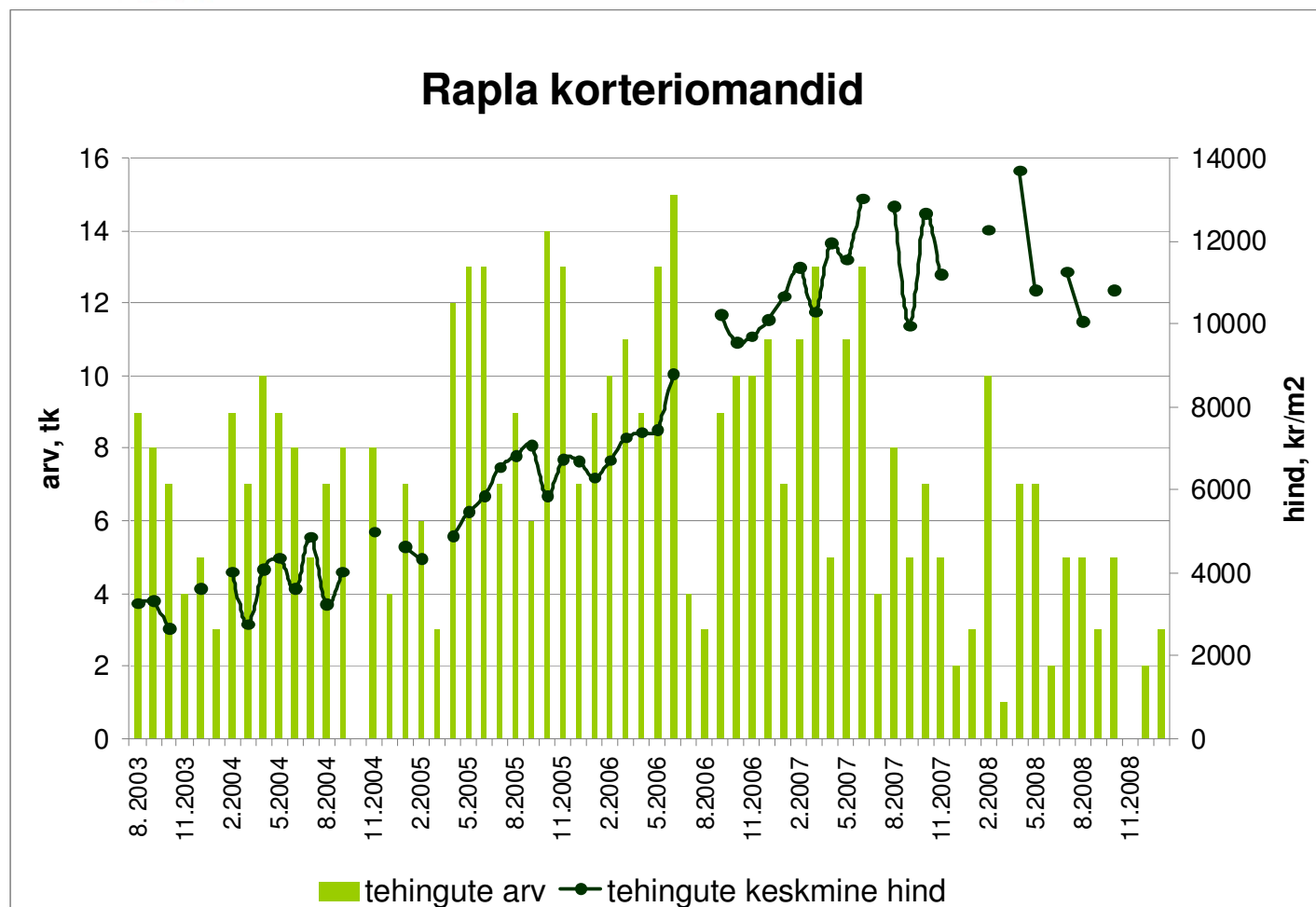
Tehingute arv on langenud 93%,  
tehinguhind 22%



Allikas: Maa-amet, Pindi Kinnisvara



Tehingute arv on langenud 80%,  
tehinguhind 21%

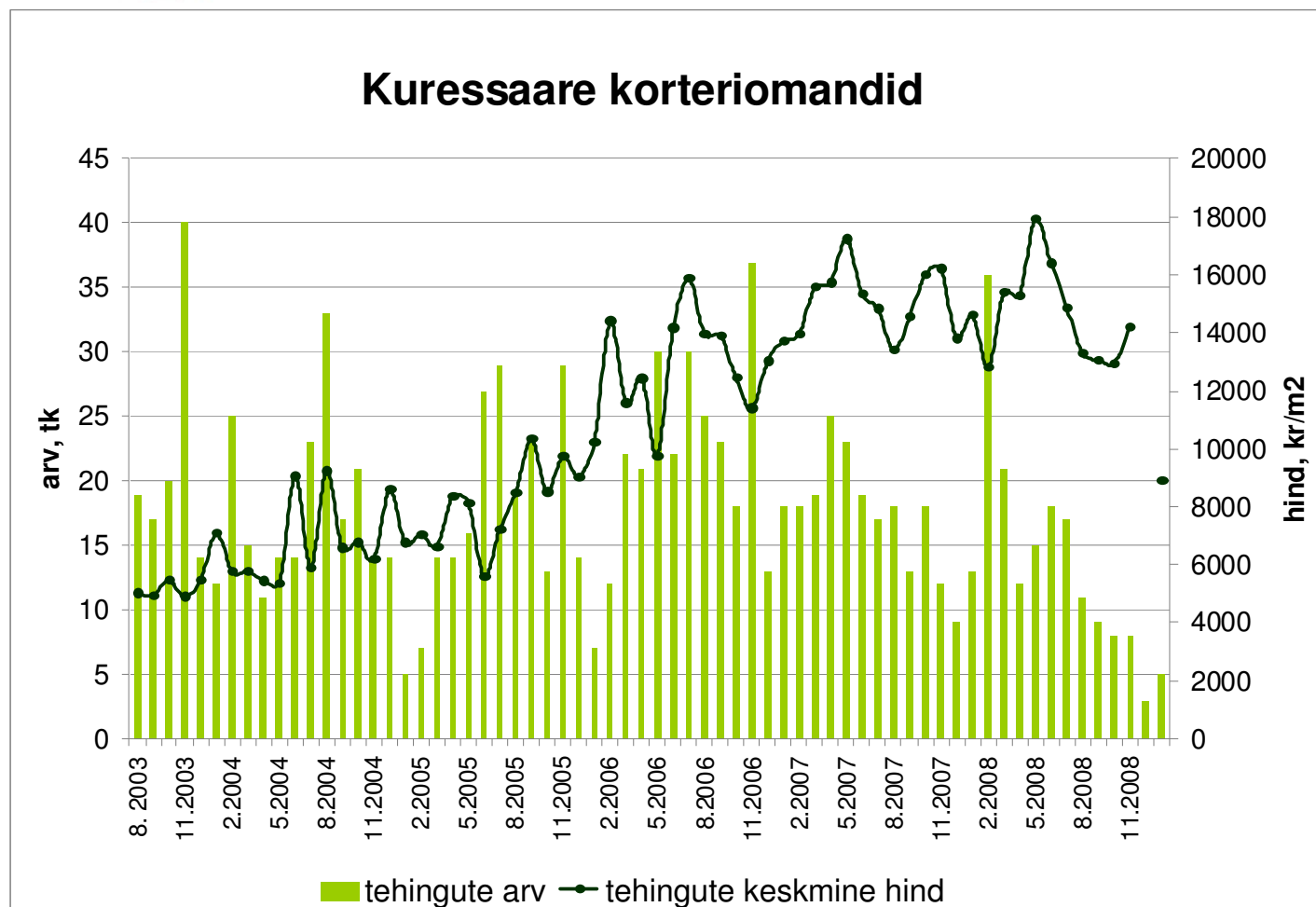


Allikas: Maa-amet, Pindi Kinnisvara





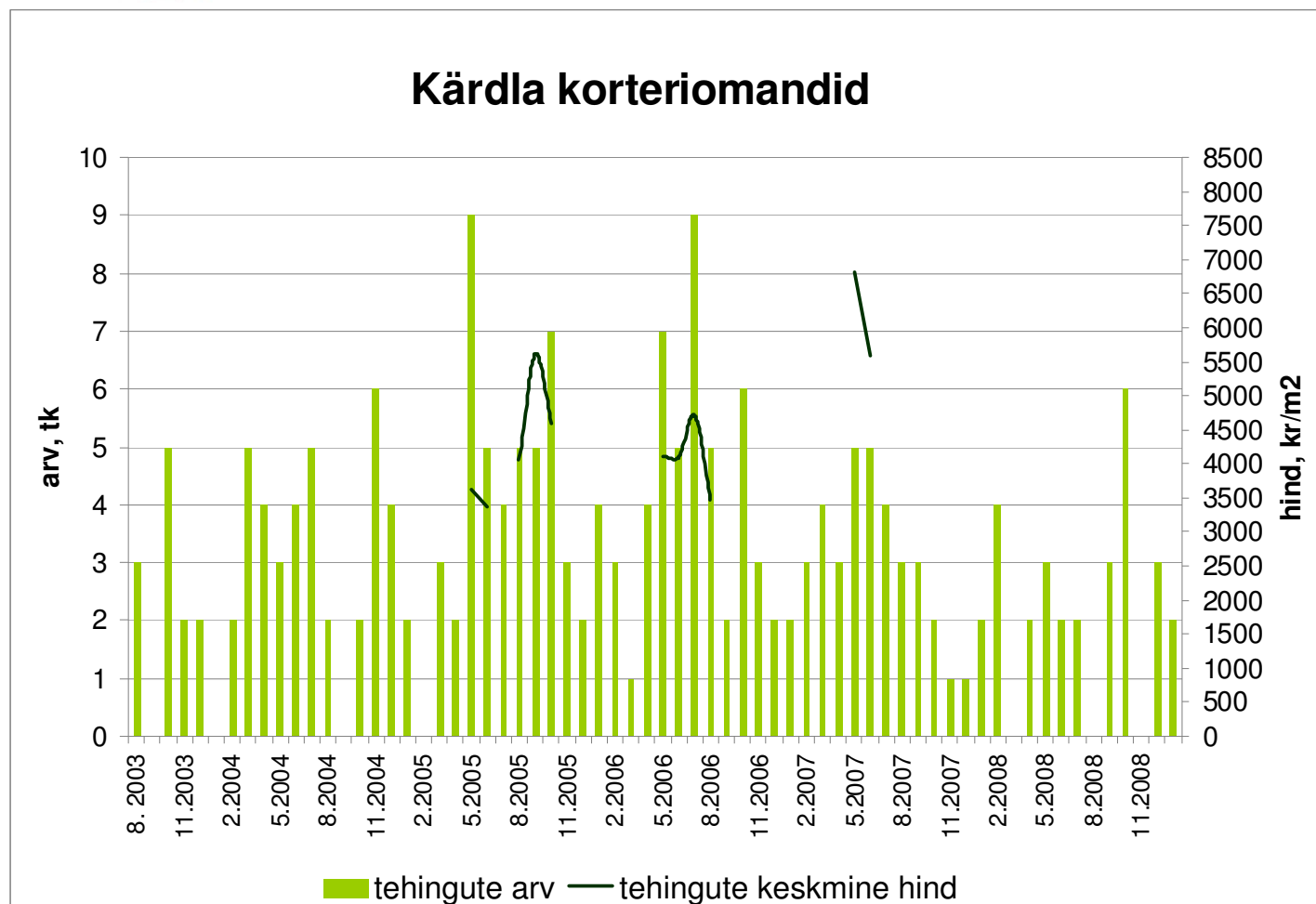
Tehingute arv on langenud 86%,  
tehinguhind 50%



Allikas: Maa-amet, Pindi Kinnisvara



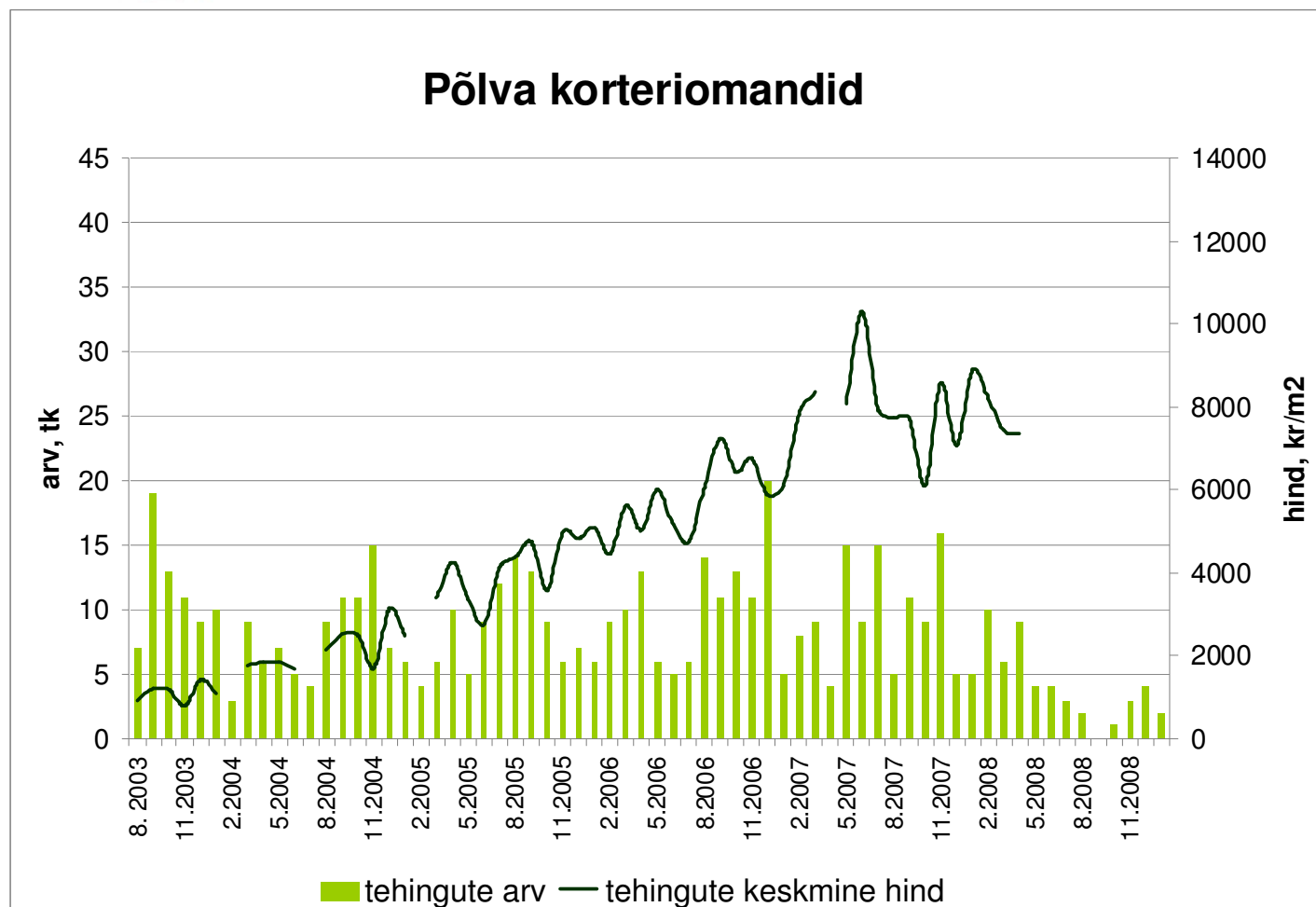
Tehingute arv on langenud 78%



Allikas: Maa-amet, Pindi Kinnisvara



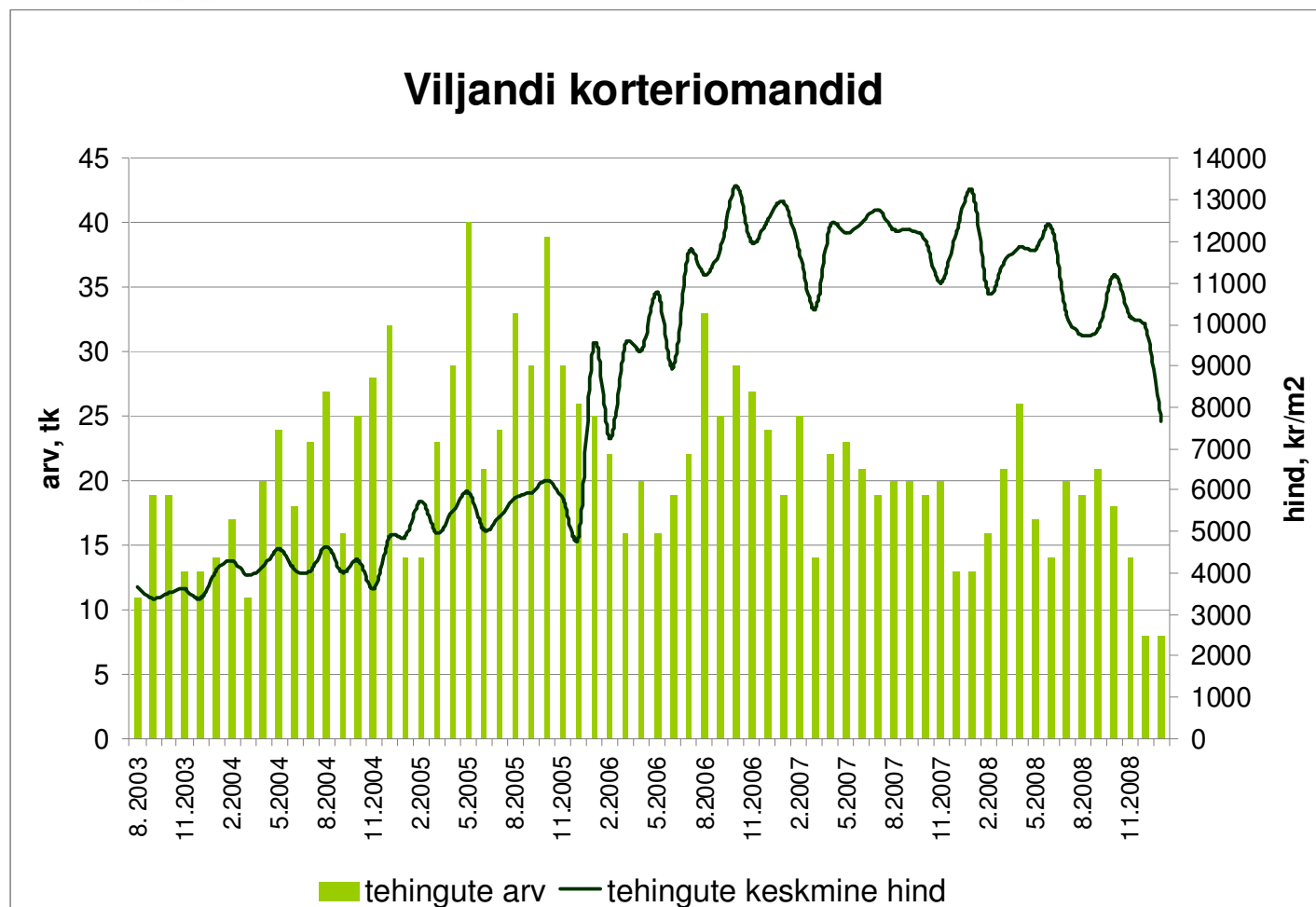
Tehingute arv on langenud 90%,  
tehinguhind 28%



Allikas: Maa-amet, Pindi Kinnisvara



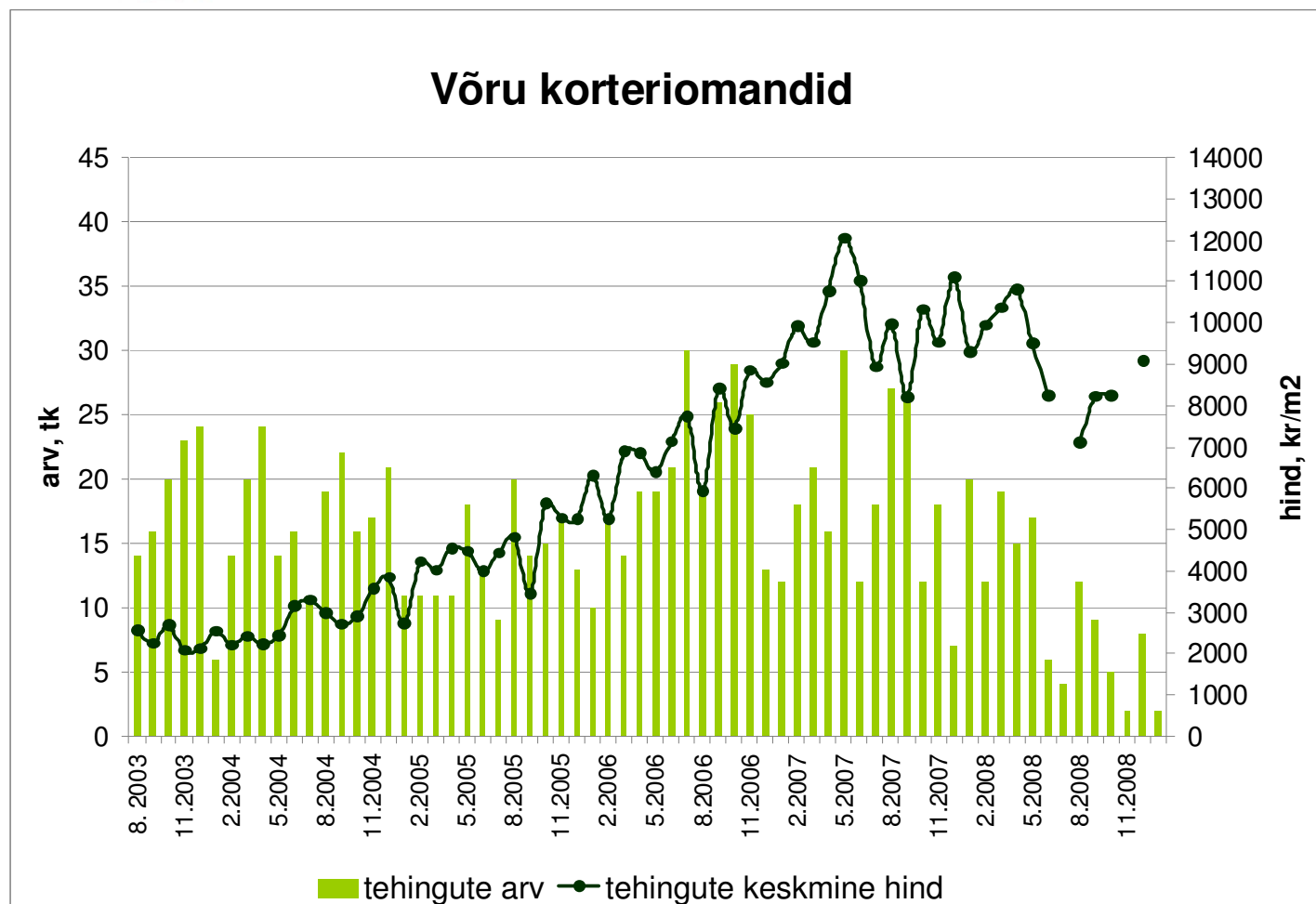
Tehingute arv on langenud 80%,  
tehinguhind 42%



Allikas: Maa-amet, Pindi Kinnisvara



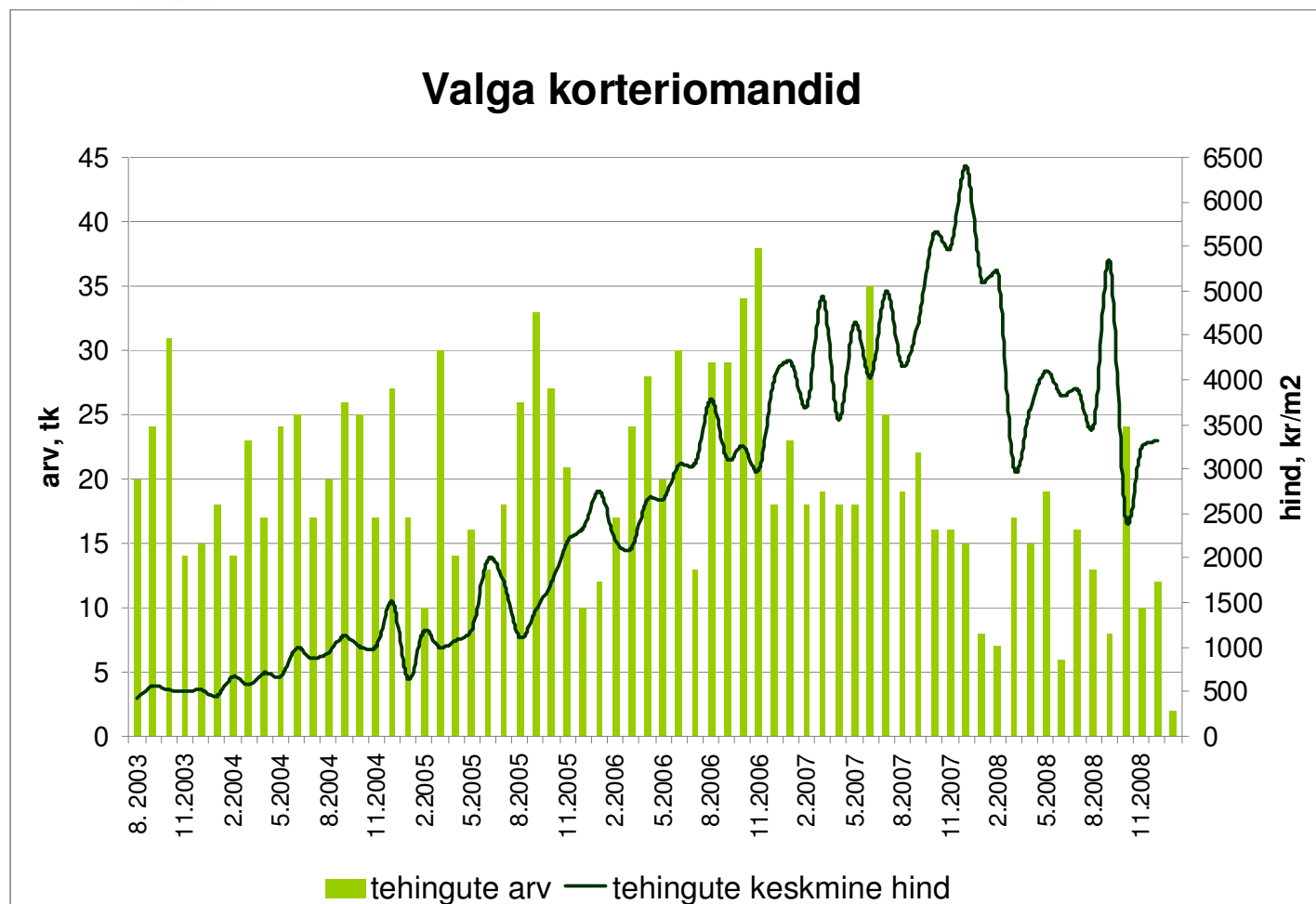
Tehingute arv on langenud 93%,  
tehinguhind 25%



Allikas: Maa-amet, Pindi Kinnisvara



Tehingute arv on langenud 95%,  
tehinguhind 48%



Allikas: Maa-amet, Pindi Kinnisvara